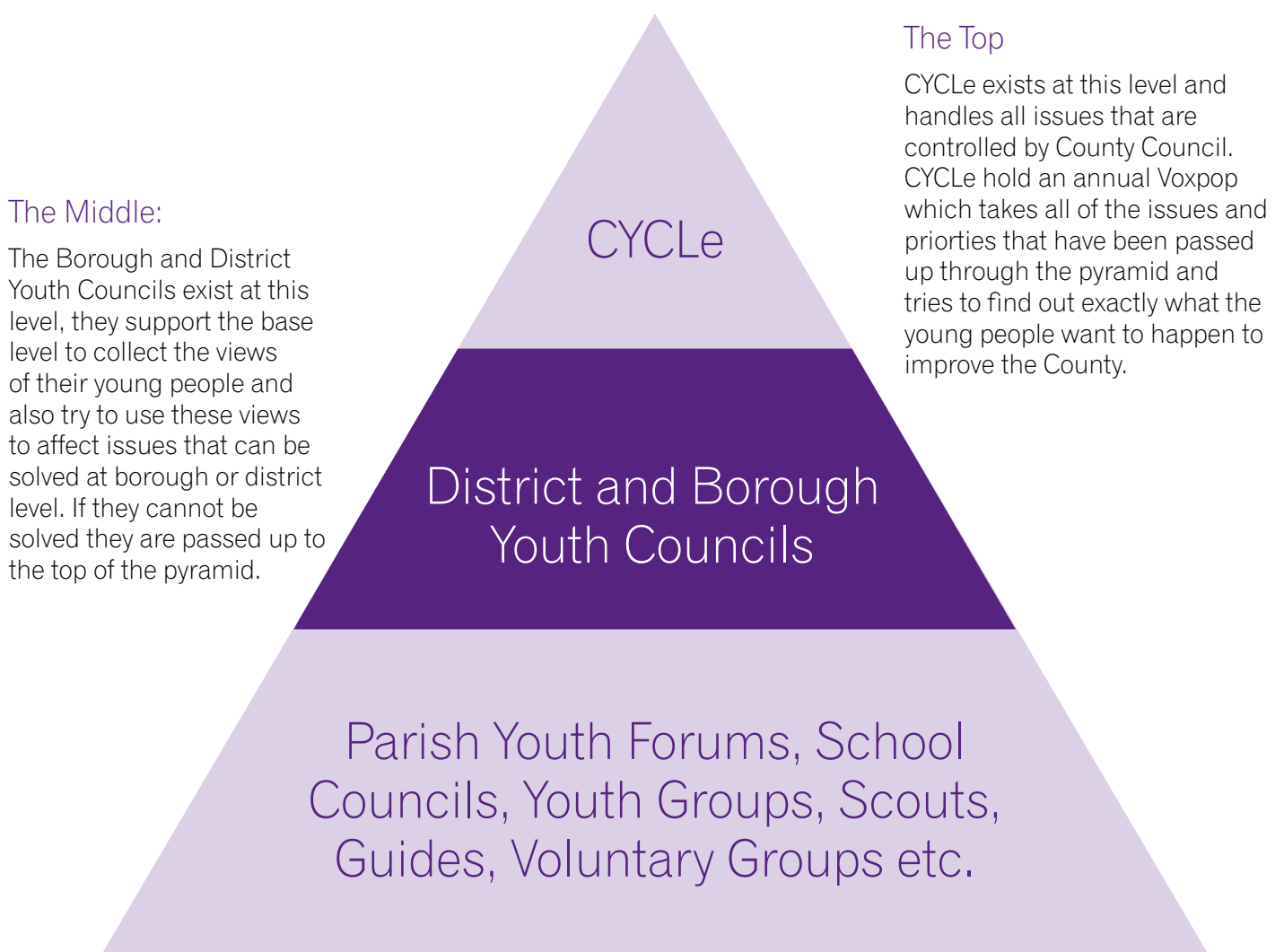


Appendix 1: Pyramid of Participation

CYCLe; The County Youth Council of Leicestershire is a body of young people who aim to capture the views of every young person in Leicestershire to ensure that, at each level, young people are able to represent the views of other young people in the planning and development of services and have these voices heard across the county using the Pyramid of Participation structure.

What Is The Pyramid of Participation? (PoP)

The Pyramid of Participation (PoP) is a three tiered structure stretching across Leicestershire which allows every young person to have their say at local, borough and county level. This Pyramid was created and is now run entirely by young people for young people, with the support of schools, District Councils and the County Council, including the Youth Service.



The Middle:

The Borough and District Youth Councils exist at this level, they support the base level to collect the views of their young people and also try to use these views to affect issues that can be solved at borough or district level. If they cannot be solved they are passed up to the top of the pyramid.

The Top

CYCLe exists at this level and handles all issues that are controlled by County Council. CYCLe hold an annual Voxpop which takes all of the issues and priorities that have been passed up through the pyramid and tries to find out exactly what the young people want to happen to improve the County.

The Base:

At this level there are many different groups and agencies who collect the views of the young people in their groups or schools with the help of the middle level.