



Department
for Transport



AECOM



WELCOME to the North and East Melton Mowbray Distributor Road Meet the Contractor Event

17 / 18 March 2023



North and East Melton Mowbray Distributor Road

Meet the Contractor Event

What Can I See Today?

- Chance to speak to staff about any concerns or questions you may have.
- Project Background
- Project Timeline
- Details of Section 73 Planning Application required to make some essential changes to the scheme to reduce costs.
- Traffic management during construction.
- Community Engagement and Social Value work
- Visual 3D representation of the scheme.
- Sign up for regular updates via email.

North and East Melton Mowbray Distributor Road

Meet the Contractor Event

Project Background & Key Dates

Why are we doing the scheme?

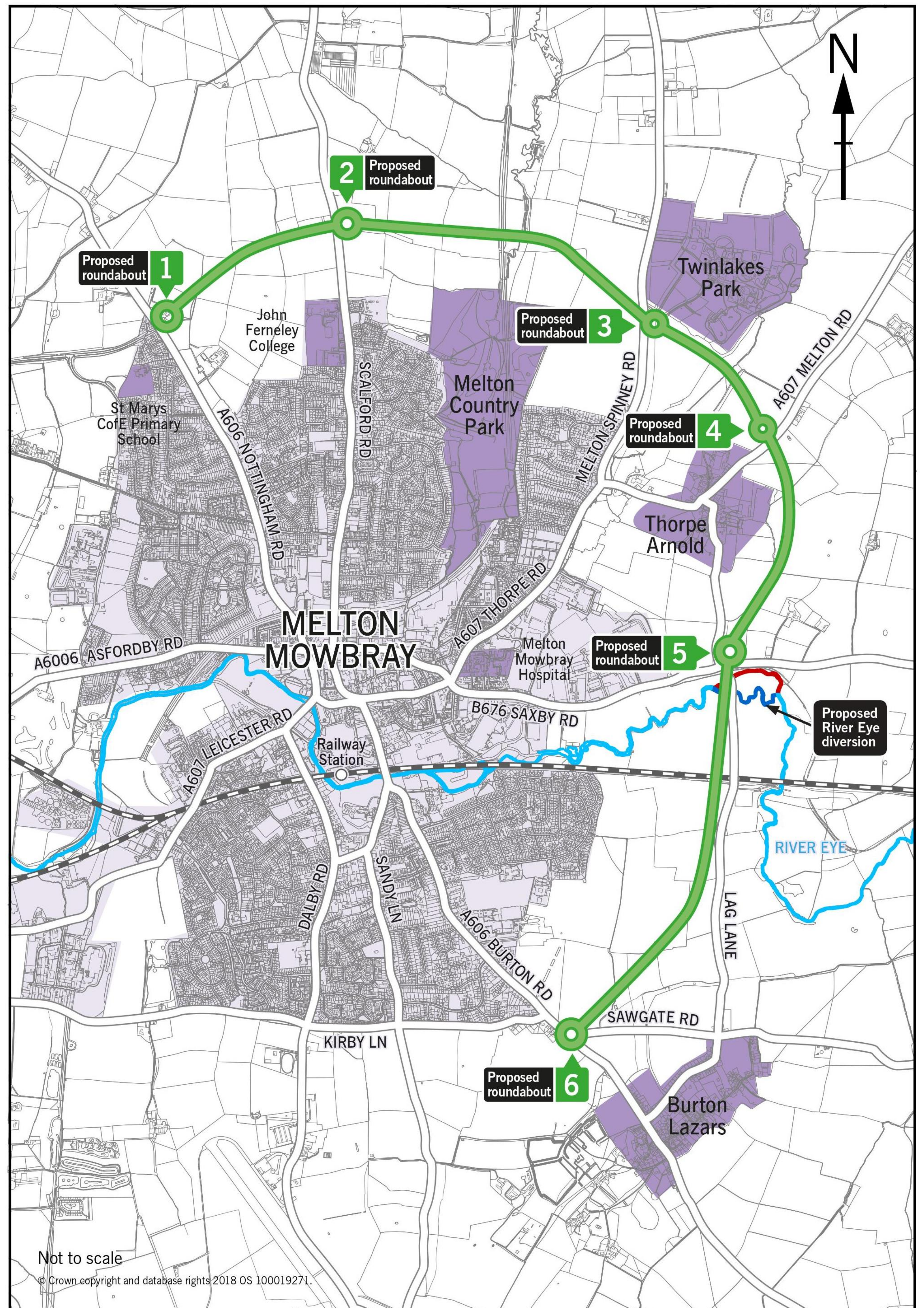
- Improved access to potential housing and employment
- Reduce congestion within Melton Mowbray
- Improve access to Melton town centre
- Reduce the number of HGVs travelling through Melton town centre.



Overview of the route of the new road



LEICESTERSHIRE COUNTY COUNCIL
North and East Melton Mowbray Distributor Road
Preferred route - September 2018



North and East Melton Mowbray Distributor Road

Meet the Contractor Event

Project Background & Key Dates

March 2023

- £49.5m Funding announced from Government/Department for Transport
- Revised planning application submitted in order to make minor changes to reduce scheme costs

February 2023

- Full Business Case approved by Department for Transport
- Advance works started on site

March 2022

- Secretary of State announced decision following Public Inquiry
- Proposed Compulsory Purchase Order and Side Road Orders (inc modifications) confirmed. Notice served to affected parties.
- Derelict Sysonby Farm demolished. Ecology and archaeology works on site.

September 2021

- Public Inquiry held for the scheme.

May 2019

- Planning approval granted for the scheme

October 2018

- Planning application submitted.

May 2018

- Detail of “preferred route” confirmed.
- Outline business case approved by Department for Transport

September/October 2017

- Consultation on recommended route for the distributor road
- Outline business case submitted following this.

Advance
Works
Started

Detailed
Design

Preliminary
Design

Advance Works – Feb/Mar 2023

We have started some advance work to enable the construction to progress on schedule.

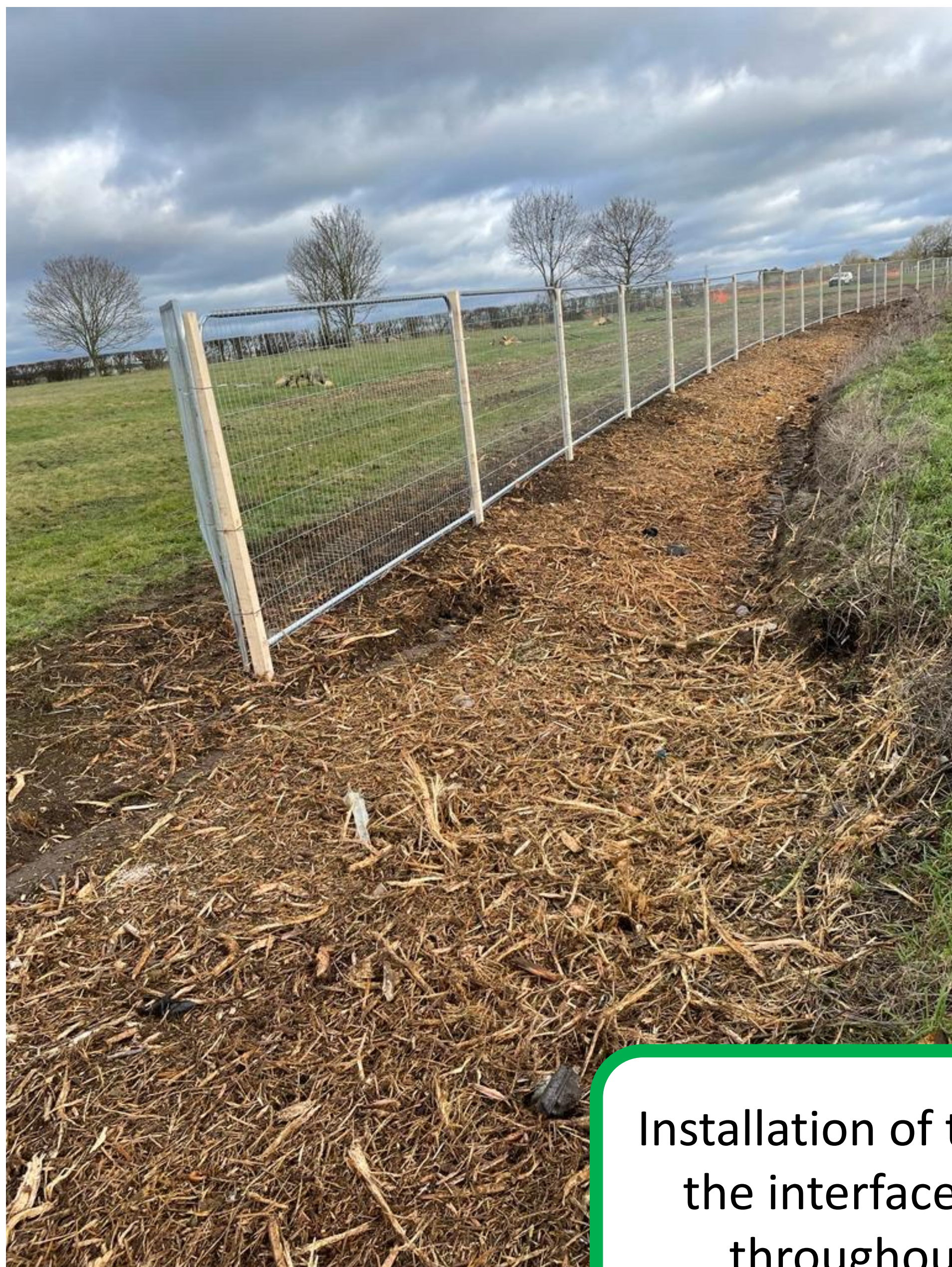
This includes ecology works, archaeology, fencing, site clearance and setting up of site compounds. Work is progressing well on site and we have included some examples below.



Archaeological investigations - we are currently undertaking strip, map and record of several areas along the route of the scheme that were identified from previous surveys undertaken.



National Grid undertaking utility diversions in preparation for the project starting



Installation of temporary fencing along the interface at the main junctions throughout the scheme route.



Installation of permanent post and 4 rail fencing along the trace.

Section 73 Planning Application

We have had to make some necessary changes to the scheme design. These are minor in nature, and detailed below. These changes allow us to reduce costs for the scheme.

Comparison drawings are available to view at this event. Full details are available online via www.Leicestershire.gov.uk/mmdr and going to the “updates” page. From there you can access a link to the full details of the amended planning application and make any comments.

The levels of some roundabouts have been changed with minor adjustments to their layout to reduce earthworks and to shorten the length of roundabout arms required to tie back into the existing highway.

Some changes have been made to the vertical alignment of the proposed road to reduce earthworks by keeping the alignment closer to existing ground levels.

The shared footway/cycleway has been re-routed away from traffic to follow the proposed Lag Lane bridleway at the River Eye. This removes duplication of proposed non-motorised user routes and enables a reduction in bridge widths at the River Eye and railway.

Hard strips have been removed from the edge of the proposed carriageway between Roundabouts 3 and 6 (National Speed limit section).

The reduction in scheme earthworks and highway cross-sections enables a corresponding reduction in the size of drainage balancing ponds.

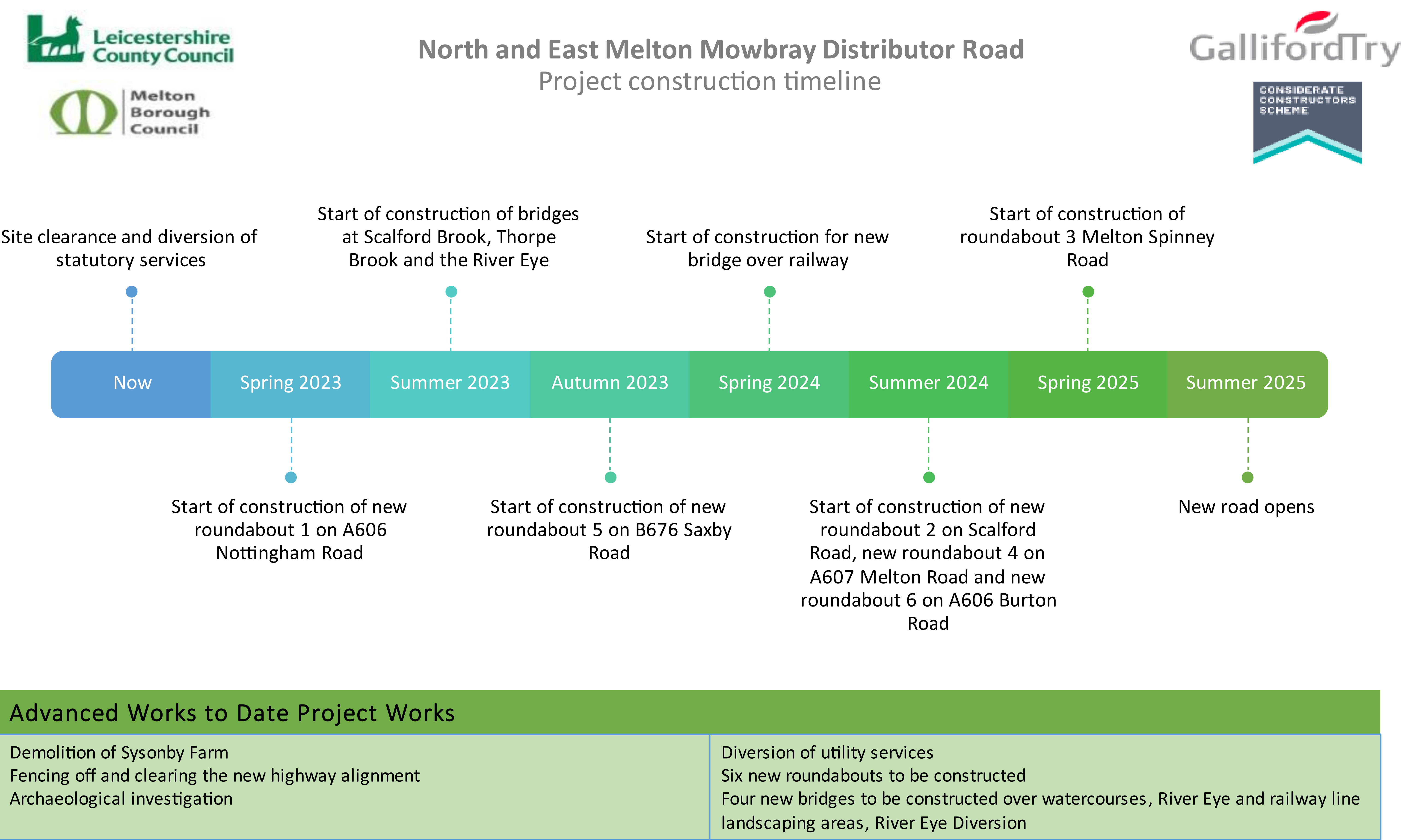
The shared footway/cycleway has been realigned to the top of cutting and bottom of embankment where feasible, moving users away from traffic, and reducing the quantity of earthworks required for construction.

The developer arm has been removed from Roundabout 2 as the proposed development access is now provided south of the proposed route, directly from Scalford Road.

Some additional landscaping bunds and associated planting have been included within the scheme design.

If you have any questions around the nature/impact of these changes please do not hesitate to speak to a member of the team who will be happy to provide further details.

Project Programme



The programme above gives an idea of the scheme timeline and some key activities.

Please speak to a member of staff if you have any queries around details such as planned road closures and diversions.

We are currently planning to have the road open by later summer 2025. We will publicise this via social media, press releases and other channels.

Ecology

Ecology Mitigation Timetable

Optimum Mitigation period
Sub-optimal Mitigation period
Mitigation not recommended

ARCUS

SERVICES	JAN	FEB	MAR	APR	MAY	JUN	JUL	AUG	SEP	OCT	NOV	DEC	
HABITATS & BOTANY <div></div>	Planting and Translocation		Planting and Translocation							Planting and Translocation			
BADGER <div></div>							Licence required to disturb/destroy active setts						
BATS <div></div>	Maternity roost works only until mid-May				No works on maternity roosts				Maternity roost works only from mid-September				
	No works on hibernation roosts		Hibernation roost works only (mid-March-November)										
HAZEL DORMOUSE <div></div>	Ground clearance			Works are weather dependant	Stump and root clearance works					Works are weather dependant	Ground clearance		
OTTER <div></div>	Mitigation can be carried out all year round but limited in breeding areas												
WATER VOLE <div></div>	Receptor site preparation		Licence required for trapping						Trapping only (not recommended for release at this time of the year)				
			Displacement works only										
BREEDING BIRDS <div></div>	Clearance works can be undertaken									Clearance works can be undertaken			
GREAT CRESTED NEWT <div></div>			Newt trapping in ponds and on land			Newt trapping on land only							
REPTILES <div></div>	Scrub clearance above ground only		Scrub clearance, capture and translocation only while active									Scrub clearance above ground only	
INVASIVE PLANTS <div></div>	Removal via hand or machine before flowering			Herbicide treatment recommended when invasive plants are in full growth and flowering							Removal of roots via hand or machine		



North-East Office

Suite 13

E-Volve Business Centre

County Durham

DH4 5QY

T: 0191 500 7890

York Office

1C Swinegate Court East

3 Swinegate

York

YO1 8AJ

T: 01904 715 470

Glasgow Office

7th Floor

144 West George Street

Glasgow

G2 2HG

T: 0141 221 9997

South-East Office

Suite FA1, The Old Library Offices

Saint Faith's Street

Maidstone

ME14 1LH

T: 01622 805 102



E: ecology@arcusconsulting.co.uk

*Survey requirements may vary by geographical region. Please contact the closest Arcus office to your project for bespoke information and advice.

W: www.arcusconsulting.co.uk

We are working in accordance with all legislation and best practice to ensure that species are protected and that breeding is not disturbed.

We have carried out comprehensive surveys as part of the scheme design and will ensure that where appropriate, mitigation is provided as part of construction.

Please speak to a member of staff if you have any queries around details.

Media Coverage

A

🔔

BBC

☰ 🔍

NEWS

☰ Menu

England | Local News | Regions | Leicester

Melton Mowbray bypass scheme receives £49m funding boost

🕒 3 days ago



DEPARTMENT FOR TRANSPORT | The government says the road will generate an estimated £144m in economic opportunities

An inflation-hit road bypass project has been backed by more than £49m of government funding.

Roads Minister Richard Holden said the road will help visitors savour Melton Mowbray's "delicious pork pies and Stilton cheese".

It will generate an estimated £144m in economic opportunities and support more than 3,400 new jobs, he said.

🏠 Home > News

£49.5 million for Melton as government supports vital new road

Planned work will reduce congestion, improve air quality and provide faster local journeys in Britain's 'rural capital of food'.



Thursday, 9 March, 2023



PICTURE: Roads Minister Richard Holden and Councillor Deborah Taylor, deputy leader of Leicestershire County Council, on site in Melton

Residents and tourists in Melton Mowbray and Leicestershire will benefit from more than £49 million in government investment to reduce congestion, improve air quality and provide faster local journeys, the Roads Minister Richard Holden has announced.



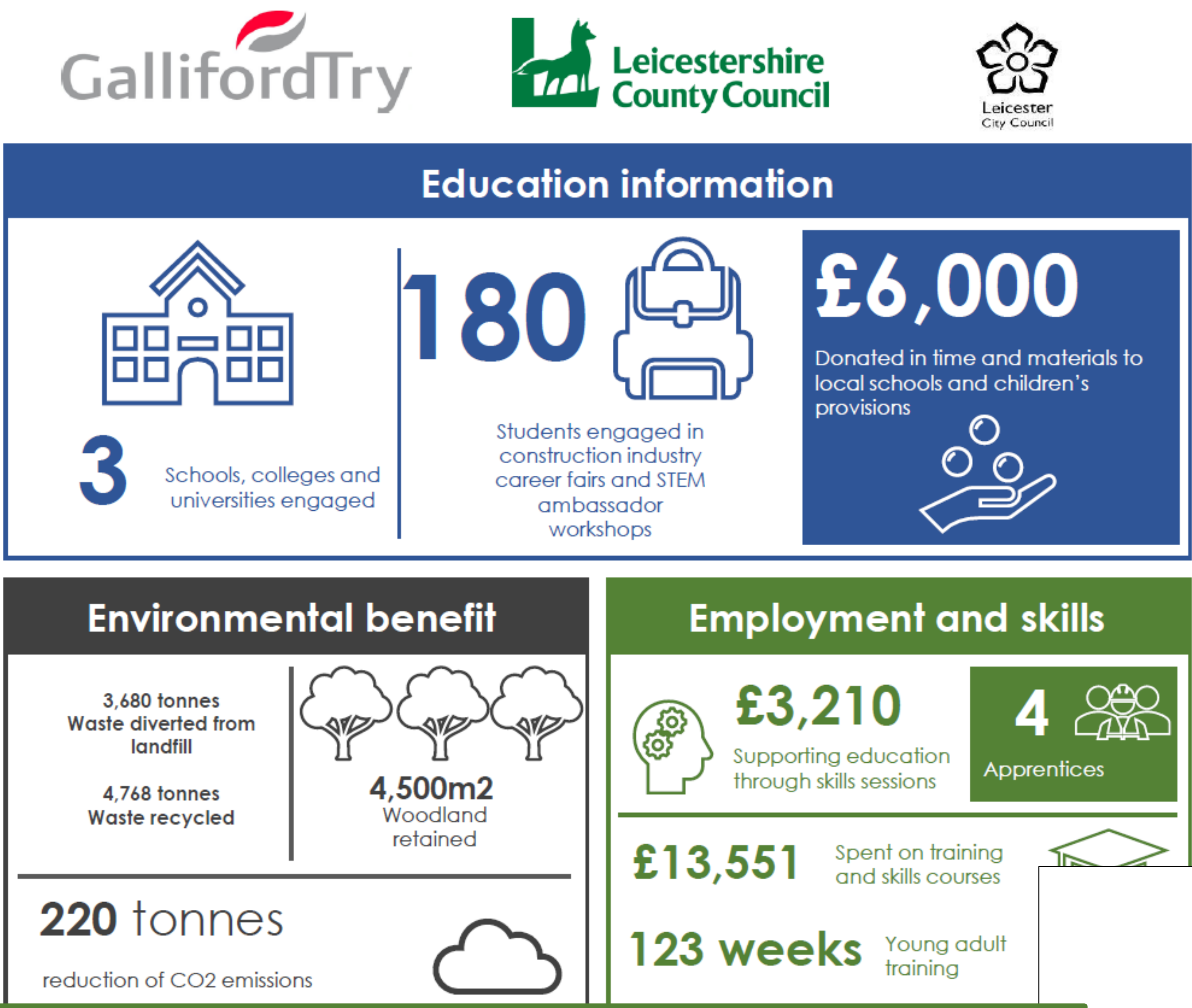
Community Engagement and Social Value


Whilst we deliver our projects, we like to support the community in which we are working and bring added social value to the local area.

Local charities, community groups and educational establishments are welcome to discuss their needs with us and if we can support you in any way we will.

Please contact Gino Salvatore to discuss your requirements further, either by email: gino.salvatore@gallifordtry.co.uk or call him on 07918640481.

Previous social value achievements and case study examples of the Community initiatives we have undertaken whilst delivering projects on behalf of both Leicester City and Leicestershire County Council are shown below and pinned to this board:



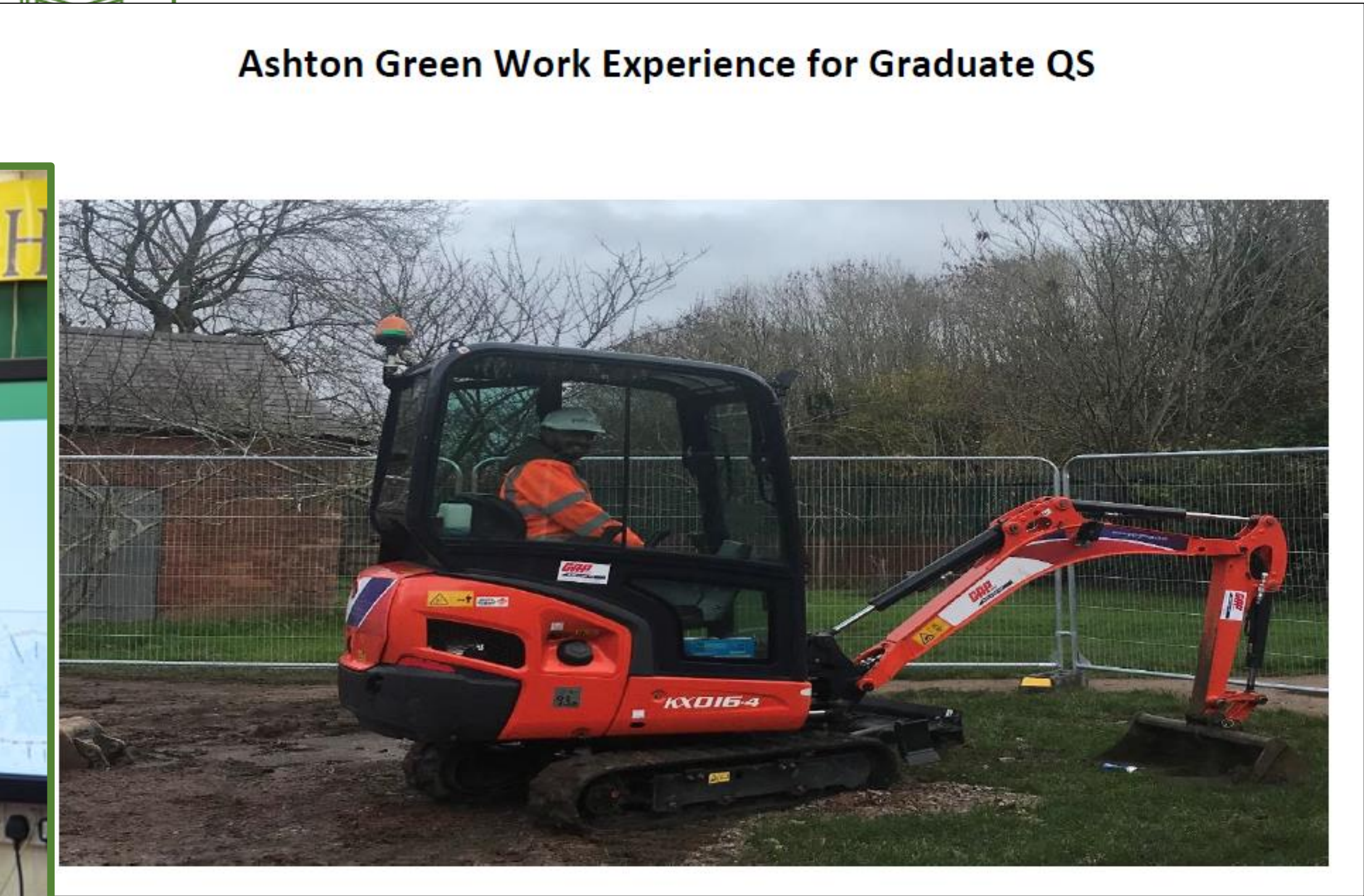
**E2**
EMPOWERING THROUGH EDUCATION

E2 Community Hub Emergency Food Distribution Centre

'E2 provides community education and services in Beaumont Leys and beyond with the objective of empowering people through education to help them and their families. They tackle the social issues in the neighbourhood in a number of ways such as:

- Provision of a weekly food bank for people in crisis;
- Community skills & ESOL for adults;
- Vocational education, Community projects and activities for young people and adults.





Keeping You Informed

We are keen to work with local residents, businesses and stakeholders during the construction of the scheme.

We want to minimise any impacts and ensure that you are kept informed of progress and any necessary disruption in terms of essential traffic management, road closures and diversions.

Public Liaison Officer

Galliford Try have a dedicated public liaison officer on hand to deal with any queries or concerns during the construction of the scheme. Please contact Gino Salvatore either by email: gino.salvatore@gallifordtry.co.uk or call him on 07918640481.

Email Newsletter/Updates

We will produce regular updates via email to keep you informed of progress to date and upcoming works and any diversions. Please sign up using a paper form (available today) or email gino.salvatore@gallifordtry.co.uk

Traffic Management

We will publish details of any traffic management, closures and diversions via signing on site, press releases, our newsletter (above). We will also update <https://one.network/> with details, which in turn is linked to mapping/sat nav updates.

Contact the Project Team

If you want to contact the Leicestershire County project team please don't hesitate to email us at mmdr@leics.gov.uk. Updates will also be placed on our website:

www.leics.gov.uk/mmdr

Frequently Asked Questions

When will the work start?

The project will commence in Spring 2023 and we are working to have the road open in Summer 2025.

Who is the contractor and how do I raise any concerns?

Galliford Try have been appointed as the contractor for the scheme. Their Public Liaison Manager, Gino Salvatore can be contacted on 07918 640481 or email gino.salvatore@gallifordtry.co.uk

What time will the works be carried out?

The majority of works will take place during normal working hours between 7am-6pm however to minimise impact and reduce traffic congestion some works maybe carried out outside of the normal working hours. For example, night shift work maybe required for road surfacing to keep the road open for daily peak time traffic.

Will there be construction traffic in Melton town centre?

We do not envisage any issues with construction traffic in Melton town centre. The majority of construction vehicles will be kept on site in the dedicated compound area. Site deliveries will be managed and arranged at off peak times to reduce any traffic congestion.

How will the works impact traffic?

We will endeavour to keep the roads open, however, for safety reasons there will be times when a road will need to be temporary closed, and a diversion route will be provided and clearly sign posted.

Any Businesses who may be affected can be assured that their requirements for deliveries and accessibility will be programmed into the scheme and will be discussed directly.

Will you be working across the whole scheme at the same time?

The scheme will be completed in phases in order to minimise the construction impact.

Frequently Asked Questions

What about the local wildlife and ecology?

The scheme has a full-time ecologist working with the project delivery team to ensure that the works do not impact on the local wildlife habitats and surrounding area. A full assessment of the local ecology has been carried out prior to any work taking place and a risk mitigation plan has been agreed. We are improving the ecology and habitat as part of the scheme.

What will you do to safeguard wildlife and protected species during construction?

With any major scheme, we always carry out surveys to determine what mitigations will need to be put in place to protect the environment and the wildlife that lives within it.

Specific legislation protects wildlife that's listed as 'protected' or 'endangered' species.

We've conducted surveys to find out where any protected species are around the scheme site, and used this information to make sure we mitigate for any potential disruption to these species. During construction and after the scheme is finished, we'll be running more ecology surveys to check how the wildlife is doing.

All of the details of exactly what we're surveying, planning to do to minimise our impact on local wildlife is in the chapter on biodiversity in our Environmental Statement. What we're going to do to safeguard protected species during the work is also set out in the 'Construction Environmental Management Plan', which is also publicly available as part of our planning permission.

Frequently Asked Questions

How will the scheme affect local residents?

During construction there will be some disruption affecting residents – noise from the works, dust, and diversion routes etc. Where possible, we will reduce the impact on the local residents – for example carrying out the noisiest work at the beginning of the night shift, ensuring construction traffic is managed and the local network is cleaned daily we will also aim to notify residents and businesses in advance of any disruption.

Once the road is open, we expect positive effects for local residents. The new road will offer a more attractive route for people who currently use local roads. It will also be more resilient, reducing the impact of incidents on the local network.

What is the scheme doing for walking, cycling and horse riding routes?

The scheme will endeavour to keep the public right of way access routes open whilst we carry out construction in the area. However, where there is a requirement to temporarily close a route then an alternative route will be provided where possible. There are proposed improvements to existing access routes, new cycle facilities being created, and Lag Lane will become a bridleway.

What economic benefits will the scheme bring?

Melton Mowbray will benefit with reduced congestion, improved journey times and greater reliability it is expected that more visitors and businesses will be attracted to the area.

Carbon emissions will be reduced, and existing businesses will be able to benefit from more reliable journey times.

The scheme also supports and accelerates the delivery of significant housing delivery in the Melton North Sustainable Neighbourhood.

Frequently Asked Questions

Will local transport services be affected?

The local transport companies are key stakeholders for us, and they will be notified of any works that will disrupt their services, which they can then pass on to their customers.

Also, we won't be impacting on train services but will keep National Rail informed in case they have any rail works that use rail replacement buses that might go on the network during our works.

How will I be kept informed.

Please see the board titled "keeping you informed". If you have any further queries please don't hesitate to ask us.

I have another question that isn't covered here.

Please speak to a member of our team and we will do our best to provide the information you need.

If necessary, will take contact details and come back to you.

**THANK YOU for visiting us today.
We hope that we have been able
to help with any queries you may
have.**