



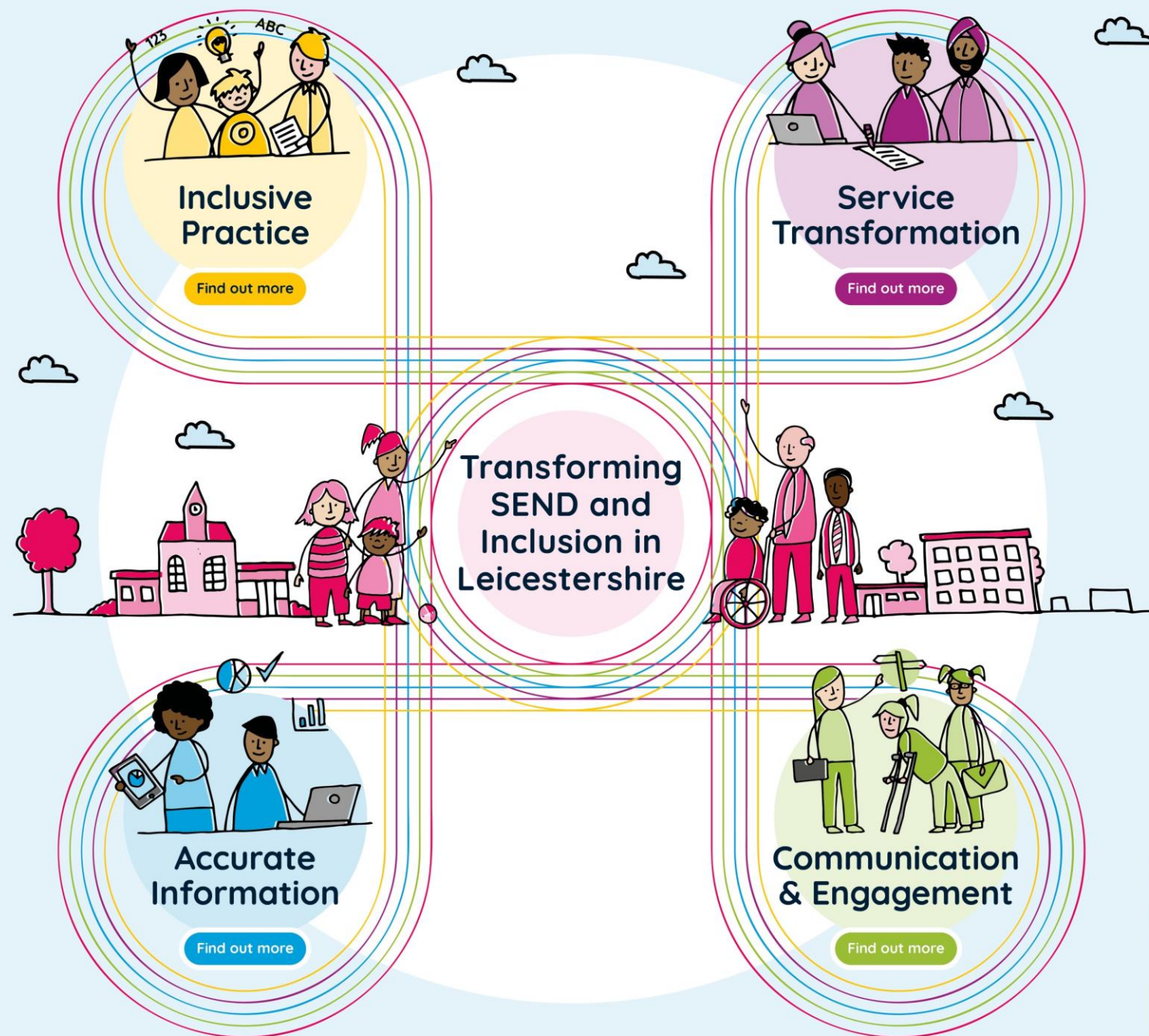
Programme overview



Leicestershire children and young people are supported by a system that is fair and transparent, to get the right support at the right time throughout their education

Principles:

- 1 Maintain a focus on children and young people
- 2 No one person or organisation can solve the problems alone
- 3 Shift to a mindset of collective responsibility
- 4 Work in genuine partnership
- 5 Foster good working relationships
- 6 Improved and honest communication
- 7 Define roles and responsibilities
- 8 Set clear expectations
- 9 Make transparent and robust decisions
- 10 Support children and young people early and close to home



For more information:

Email:
transformingsendi@leics.gov.uk

 **Transforming
SEND and Inclusion
in Leicestershire**

We need to work together to do what's right for children and young people.

Right time, right place and right support for children and young people with special educational needs and disabilities.



We are designing improvements with stakeholders across the system, but the change is complex and will take time



Accurate Information

Synergy Schools Portal Trials



3 Mainstream Schools

Education System
★
Leaders Group

Inclusive Practice Trial Group



10 Mainstream Schools

Focus Group



Inclusive Practice Toolkit

Early Years



Parent Focus Group



Inclusive Practice

▶ Transforming SEND and Inclusion in Leicestershire

Service Transformation



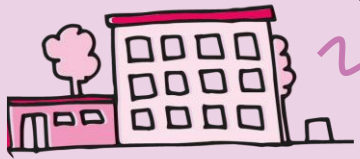
Sufficiency Planning Trials



Improving Consults Trials



3 Service Design Groups



Identifying Strengths & Needs

Provision Based on Need

Communication to and from the LA

TSIL Graphic



Design Group



TSIL FAQs



Communication & Engagement



Ensuring everyone involved in supporting children and young people take action and gives the right support.



Early Years

Ensuring early and consistent planning and preparation for an inclusive and successful transition from early years to primary school.



The Best Practice Toolkit

Providing a common set of expectations for schools and families about what support should be available, and how this support can be accessed.



Setting Specific Planning

Identifying and offering support to schools with the highest levels of need around inclusivity.



Service Demands and Impact

Supporting strategic, data-led decision making within our **Autism Outreach and Inclusion** services, to deliver effective interventions.



Special School Outreach

Developing and maximising the impact of our special school outreach offer.

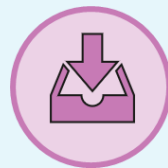


Ensuring the local authority understands the needs of children and young people and their families and makes transparent, needs-based decisions with timely and clear communication.



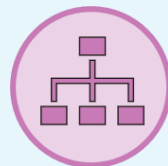
Setting Type Decision Making

Making sure our processes and resources are set up to consistently agree and achieve the most suitable setting type for children and young people.



SENA Workload Management

Supporting SENA to complete assessments and reviews in a more timely manner, while ensuring the best outcomes for children and young people.



SENA Operating Model

Setting up SENA to best manage demand, with clearly defined roles and responsibilities and the right number of people in each role.



Funding Models

Identifying the right funding system to allow us to allocate funding fairly and effectively to schools.



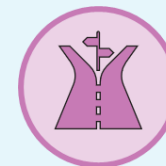
Educational Psychologist Support

Supporting the EP service to clear the backlog and improve timeliness of assessments.



Utilising our Specialist Provisions

Getting an accurate view of our specialist provisions' spaces and offerings, and having effective processes to match children and young people to placements.



Decision Making

Ensuring our decision-making processes are consistent and based on the clear understanding of the needs of children and young people.

When do we expect each workstream to start implementation?

✓ Workstream Design Complete

Already In Implementation



Early Years ✓



Educational Psychologist Support ✓

Summer Term



The Best Practice Toolkit ✓

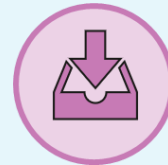


Service Demands and Impact

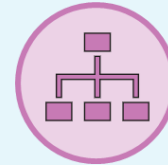
Autumn Term



Special School Outreach



SENA Workload Management



SENA Operating Model



Setting Type Decision Making



Utilising our Specialist Provisions



Decision Making

2024 Onwards



Setting Specific Planning



Funding Models