



**Tree
total tops
250,000**

Page 6

**Support
for local
families**

Page 15



**Want to
change lives?
Join our team**

Page 5



Extra cash invested in roads



Three million pounds has been earmarked to top up the budget for fixing and maintaining Leicestershire's roads, cycle paths and pavements.

The one-off cash is being redirected to mend potholes and 'patch repair' across our 2,800-mile network to mitigate the impact of funding pressure and costs' increases.

The money is the equivalent of 30,000 repairs or fixing 75,000 square metres of damaged road and is being used to target areas across the county.



Ozzy O'Shea

Councillor Ozzy O'Shea, cabinet member for highways and transport, said: "This money is really welcome and channelling it into day-to-day maintenance means

we can keep up our good work fixing potholes and repairing defects, which we know is really important to residents.

"But it's also clear that the scale of the challenge in maintaining our roads does increase every year. Government funding for maintenance isn't enough to address the amount of wear and tear we see on our roads but we're working really hard to tackle it."

During the summer, we're carrying out a huge preventative programme – known as 'surface dressing' – which will see more than 600,000 square metres of road treated to prevent potholes forming in the first place.

This month, we're starting work on a major scheme in Melton Mowbray – the biggest we've ever delivered – designed to cut congestion, support new homes and create jobs. The Melton Mowbray Distributor Road is set to open in the summer of 2025.

And with 60 parish councils now signed up to our successful wildflower verge scheme, the initiative is blooming across the county. Wildflowers and grasses provide local species with food and habitat and also form part of our pledge to make Leicestershire a net zero carbon county by 2045.

We work round-the-clock to maintain our 2,800-mile road network – further than driving to the North Pole – and keep the county moving. Take an in-depth look at the work of our highways team on page 4.



Leicestershire Matters is sent to all residents in the county of Leicestershire.

It costs around 12p to print and deliver each copy. To help save money on the distribution, we work closely with Royal Mail. We're sorry if you receive Leicestershire Matters just over the border in a neighbouring county – but by using standard postal routes we actually save £750 per issue.

Contact us

leicestershire.gov.uk

Our website focuses on the most popular things that people want to do online. So next time you need to find or do something with the council, go online at leicestershire.gov.uk

Email

leics-matters@leics.gov.uk

Twitter @LeicsCountyHall

Facebook LeicsCountyHall

Instagram LeicsCountyHall

TikTok @LeicsCountyCouncil

General enquiries

Mon - Thur: 8.30am - 5pm
Fri: 8.30am - 4.30pm
Telephone: 0116 232 3232

Post

Communications Team,
Room 400, County Hall,
Glenfield, Leicester, LE3 8RA

Welcome to Leicestershire Matters

Council leader, **Nick Rushton**, introduces our summer edition



From launching family hubs to fixing the roads and pressing for fair funding, we're working hard to make Leicestershire the best place to live and work.

Roads are used by everyone so it's important to be able to get from A to B, whether it's for work, health appointments or school drop offs. That's why we're prioritising highway maintenance and allocating extra cash to keep up repairs, despite growing funding pressures.

Our investment doesn't stop there. We're rolling out new one-stop shops supporting families and making £22m available to help people as the cost of living rise squeezes wallets further.

Our 250,000 tree milestone is great news – and means we're over a third of the way to

our 700,000 target. Tackling climate change, air quality and health inequality remain priorities and you can find out more in this edition about our innovative and successful schemes.

And we're connecting communities and boosting business. Our tailored support is helping hundreds into work or training and with pioneering GigaHubs coming soon – increasing broadband access and speeds in rural areas – I'd encourage you to sign up for updates.

I hope you enjoy this edition.

Nicholas Rushton

NICK RUSHTON

Tune in to scrutiny

Budget pressures, support for vulnerable people and health services have been at the heart of our scrutiny meetings.

Through scrutiny, our councillors look at issues of concern and make sure decisions taken are for the benefit of Leicestershire residents.

A new report shows that last year, nearly 120 reports were considered involving 55 hours of debate which were watched by almost 10,000 people online.

Almost half of our 55 councillors play a role which involves providing challenge, receiving questions and petitions, and making sure local services are on track.

The performance of

commercial services and investments, social care reform, special educational needs and disability support improvements, vaping and road safety are just some of the issues scrutiny leads will take a fine tooth comb to this year.

Read the full annual report:
leicestershire.gov.uk/scrutiny



Tune in to scrutiny on our YouTube channel:
leicestershire.gov.uk/webcast

Four of our councillors are 'commissioners' and decide on priority issues for scrutiny:



Michael Mullaney CC
Chairman of the Scrutiny Commission



Rosita Page CC
Vice Chairman of the Scrutiny Commission



James Poland CC
Scrutiny Commissioner



Amanda Hack CC
Scrutiny Commissioner



If you would like the information contained in this newsletter in an alternative version such as large print, Braille or tape, or help with understanding it in your language, please call 0116 305 6274 or email leics-matters@leics.gov.uk

100% recycled

When you have finished with this leaflet please recycle it



Fair funding campaign moving ahead



Our cabinet leads and chief officers at Downing Street

Our push for fair funding has taken a step forward after a positive meeting with the Chancellor in Downing Street.

County council chiefs and local MPs have met Jeremy Hunt to set out how an outdated system means that Leicestershire receives less than half the money of the best funded areas.

Council leader, Nick Rushton, deputy leader, Deborah Taylor and cabinet member for resources, Lee Breckon, also presented a pragmatic, temporary fix which would see Government put in an extra £350 million to level up 32 of the lowest funded councils.

Follow up meetings with local government minister, Lee Rowley, and Government officials are already being arranged.

If Leicestershire was funded at the average level for English councils, it would receive an extra £130m a year.

Nick Rushton said: "Clearly national finances are stretched but this is a good first step. The Chancellor listened carefully to our case for change and our concerns that better funded and poorly run councils are rewarded. He appreciated our approach of presenting a credible solution rather than just complaining about the problem.

"We pride ourselves on doing the best we can with the money we have and our approach to efficiency – including our hat-trick of 'most productive council'

awards from IMPOWER – was well received by the Chancellor.

"With the longer term financial challenge growing, we're committed to keeping up momentum and delivering for our residents. And we have a solution which can be implemented cheaply and quickly. To keep the ball rolling, we'll be meeting Local Government Minister, Lee Rowley, to talk about this in more detail.

"I'd like to thank our local MPs for securing such a constructive meeting."

Six county MPs took part in the meeting at the end of April: Edward Argar, Alberto Costa, Luke Evans, Jane Hunt, Alicia Kearns and Neil O'Brien.

Read our short term solution in think tank Onward's report: ukonward.com/reports/fair-funding

If we were funded at the same level as the average English council, we'd have an extra

£130m a year



Councillor Lee Breckon, cabinet member for resources, sets out the latest financial position



The challenge facing councils across the country is vast – keep on delivering vital services despite growing financial pressure and steeply increasing demand.

This is no mean feat but our focus remains two-fold – supporting vulnerable people and delivering important front line services such as fixing roads.

New initiatives such as our family hubs are a shining example of this. We're also using Government money to boost numeracy skills and roll out lightning-fast broadband and diverting our resources to make sure we can keep our highway network moving.

Our budget aims to protect public services as much as possible during tough economic times. Although we're investing £57m more in vital support, such as home and residential care, rising demand and inflation is set to push up our budget gap to £90m by 2026. This means we'll need to consider changes to some of our services and I'd encourage you to shape plans by getting involved with consultations.

Being the lowest funded county in England compounds the issue and the Chancellor was impressed that we have a pragmatic solution. I'm looking forward to further making the case with ministers.

KEEPING THE COUNTY MOVING



Your thoughts wanted on flooding

We're working on our new flood risk strategy and want to hear from you. Flooding can cause damage, disruption and destruction, and increased heavy rainfall events suggests the risk could be growing.

We want your input on the new plan and any observations on any history of flooding, both at your property and locally. Have your say before Sunday, 13 August: leicestershire.gov.uk/flood-risk-strategy

Pioneering trial back for second time



A scheme creating safer streets by reducing traffic congestion and improving air quality is being trialled again at two Leicestershire schools. 'School Streets' creates a safe space for children to walk, cycle, scoot or 'park and walk' to school, with temporary road closures for vehicles outside of the school gates.

Residents can still access their houses and the scheme – at Belvoirdale Community Primary School in Coalville and Anstey's Latimer Primary School – is run by volunteers.

Peter Hardy, parent of a student from Belvoirdale Primary School, said: "I am really pleased that the road safety campaign is coming back. It helps to keep students and other road users safe."



Delivering
for you

Our highways teams work round-the-clock to look after our roads. Here's a taste of what's involved:

660,517

square metres of road to be sealed and protected during annual maintenance work (using 8,500 tonnes of stone)

2,800 miles

of road we maintain in Leicestershire

16,500

tonnes of grit delivered ahead of the gritting season

1,300

miles our gritting lorries cover on a typical wintery night

A crowning success

For the first time in more than 70 years, Leicestershire came together to celebrate the coronation of a new monarch, as King Charles III took to the throne.

Across the county more than 150 street parties took place across the weekend for communities to enjoy the occasion. Residents also saved thousands of pounds, thanks to our waiving of road closure fees for the events.

In Birstall, Firfield Avenue was selected by the BBC for its Coronation Concert coverage as they crisscrossed the country, with the street broadcast to more than 10 million people.

Many people in Leicestershire also answered Lord-Lieutenant Mike Kapur's call to use the Bank Holiday Monday as a chance to take part in the King's Big Help Out voluntary event.

Join our social work team

What our team says...

Inspirational story shows it's never too late to start again

Annemarie works as a supervising social worker in our Supported Lodgings Team. Her journey to becoming a social worker has taken in 25 years of jobs in retail.

After studying hard to achieve her dream, she became a social worker in our team making a hugely positive difference to children in care across Leicestershire.

Annemarie said: "My experiences of being in care and being around social workers is where I got my passion for wanting to be a social worker.

"The best part of being a social worker is when I see kids thriving. It's a challenge I enjoy so much – there are never two days the same.

"A good social worker who spends enough time with those young people will be able support those shames and break those barriers down.

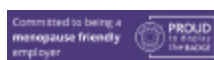
"I enjoy being a part of the team here at the county council. Your experiences can really help young people. If you're interested I really urge you to give it a go."



The best part of being a social worker is when I see kids thriving."

Annemarie, Social Worker

See more about working at the council at leicestershire.gov.uk/inclusiveworkplace



Foster couple urge others to take the plunge

John and Michelle's incredible work making a difference

With around 700 children and young people in care in Leicestershire alone, there's never been a greater need for people to consider fostering.

Leicestershire foster couple John and Michelle decided to become foster parents two years ago after their children had flown the nest. Fostering has, to them, helped once again "fill their home," and their fostering journey has covered lots of different types of placements.

They said: "We've had four mums and babies living with us and we still hear from and see some of the parents and

their children. Helping them improve their parenting skills needs patience.

"It's important to remember that they are mum and dad, but we're always there to step in if necessary to help them learn and improve.

"We also provide emergency care on the council's out-of-hours rota. Although some children and young people are confused, and often frightened, you'd be surprised how far a warm smile, something to eat, and a comfortable bed can go in reassuring them that they are safe and welcome.

"If you're the slightest bit curious about

fostering, pick up the phone and call!"

Councillor Deborah Taylor, cabinet member for children and families, said: "John and Michelle's story highlight the incredible work that takes place across the county to care for children in Leicestershire.

"Our staff and foster carers work so hard and if you're looking to make a difference get in touch with us. We're ready to welcome you."

If you're inspired by John and Michelle's story, visit fosteringleicestershire.com or call 0116 305 0505.

Tree total reaches unbe-leaf-able

250,000

Blake Pain, said:
"I want to thank everyone who has helped us on the way to our ambitious target."

Latest update sees new milestone in tree planting scheme

A TREE
FOR EVERY
PERSON



Our commitment to planting 700,000 trees across Leicestershire has reached the 250,000 mark.

With the goal to plant one tree for every person in the county to help secure a greener future for Leicestershire, planting 250,000 trees is a significant step.

We support the initiative by planting trees directly, applying for funding or giving away tree planting kits.

Councillor Blake Pain, cabinet member for environment and the green agenda, said: "This is a great moment for the county as we mark this milestone – a quarter of a million trees planted around Leicestershire.

"We're well on our way to the target of 700,000 trees and I want to thank everyone who has helped us on the way to our ambitious target."

Our initiatives include working with the National Forest to grow 20,000 trees a year at a special site in Moira, with the trees being planted across Leicestershire.

Play your part

You can make a difference to our tree total. If you plant a tree – tell us. Scan

the QR code at the bottom of this page to record the tree and help us reach 700,000 trees.

Our free tree and hedgerow packs, supplied in partnership with the Woodland Trust, are designed to help renew and restore existing woodland and vegetation, as well as replacing trees which have been affected by diseases such as ash dieback.

More information on our tree ambitions and the interactive map showing the number of trees planted is available at leicestershire.gov.uk/trees

Online booklet available to help protect trees

We're asking you to play your part in helping us to identify and manage diseased ash trees.

The ongoing challenge of ash dieback has seen thousands of ash trees wiped out across the UK.

It's a highly destructive disease is caused by a fungus and can lead to infected trees shedding branches or limbs, or potentially falling as the tree dies.

With so many ash trees on private land, we've created a booklet with help and advice on the topic of ash dieback, including clear information on the steps landowners need to take with infected trees to stop the spread of the disease.

Councillor Blake Pain: "It's vital that everyone who has ash trees on their property takes action to ensure they are safe. Our tree wardens are also able to work with landowners to offer help and advice."

The booklet has more information on ash dieback, including a short video, can be found at leicestershire.gov.uk/trees

Scan the QR code to register your tree planting. If you've planted a tree, tell us and we'll add it to the total for Leicestershire.



Mapping out tree protection

A new way of finding protected trees in Leicestershire is now available thanks to an interactive map.

Tree Preservation Orders (TPOs) are placed on individual trees, groups of trees or even entire woodlands. This means that work cannot take place on a tree, or building work that might affect it, until permission has been granted.

Fines of up to £20,000 can be given out for illegal works on trees with a TPO in place.

Now you can check the 265 TPOs using the map by searching by location or postcode or even browsing

around the county. The map highlights protection orders that have been in place for more than 70 years in popular areas including Blaby, Castle Donington and Stapleford Park.

Most of the trees covered by the TPOs are on private land, including gardens and farms.

You can also find links to each of the county's seven district council websites so you can check on other TPOs.

Find out more about trees and TPO map at leicestershire.gov.uk/trees



Going wild in Leicestershire

Transforming our roadside verges into nature hotspots is gathering pace

We've teamed up with local wildlife charity NatureSpot to help improve biodiversity and encourage wildlife in the county.

More than 37,000 square metres of grass verges are being left to grow. That's about the same size as Enderby.

Sixty parish councils across the county have signed up for the scheme which will see verges being allowed to flourish between April and August – when wildflowers and grasses reach maturity.

Leaving verges to grow helps wildlife to continue thriving in Leicestershire. All of the new verges were surveyed to understand the current levels of their biodiversity. Surveys will be taken each year to track how biodiversity is improving.

Councillor Ozzy O'Shea, cabinet member for highways and transport, said: "The responses from parishes have been really encouraging and we'd love to see more of them get involved."

"Conserving our natural environment is a really important part of the council's work as we play our part in tackling climate change and encouraging others to join us."

The initiative forms part of our work to help tackle biodiversity loss and help recover nature.

Interested in joining the scheme and helping wildlife to thrive? Email environmentteam@leics.gov.uk to sign up

11
crews cutting
grass to keep
roads visible

70
wildflower
verges

4 million
square metres

cut every month to keep our highway network safe
- that's equivalent to 573 football pitches

Ukraine guests reach 1,000

Over one year on since the Russian invasion, the 1,000th guest has arrived in Leicestershire, including more than 350 children.

Since last year the county council and our 500 hosts have welcomed Ukrainian guests into the area with open arms, and staff have worked hard to match hosts and guests, as well as providing ongoing support.



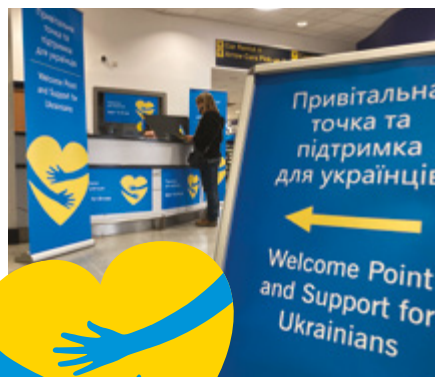
Pam Posnett

Councillor Pam Posnett, cabinet member for communities, said:
"It has been fantastic to welcome our Ukrainian guests into our communities. We're

proud of the support hosts have provided and urge anyone interested in being a host to give it a go. It's hugely rewarding and lots of support is available."

There are so many benefits of being a host, and we're still looking for people who can offer a home for people fleeing Ukraine. We can offer support and assistance to hosts and give advice.

Find out more and register your interest at leicestershire.gov.uk/ukraine



(L-R) Jennifer McKenzie, LCC, Karl Bowden, Leicestershire Fire and Rescue Service, Elliott Foster, LCC, Councillor Louise Richardson, cabinet member for health and wellbeing

New workplace scheme gets healthy start

Leicestershire Fire and Rescue Service will be the first organisation to benefit from our new Healthy Workplaces programme.

Designed to help Leicestershire organisations achieve accreditation, businesses who sign up can benefit from a free needs assessment, to give recommendations and work towards "healthy workplaces accreditation". We provide a tailored programme for each workforce, including health MOTs, training for managers and other support.

The scheme also offers mental health first aid training and healthy conversation skills training.

The county's fire service's 700-strong workforce, including 580 firefighters, has committed to undergoing a workplace

health needs assessment for its staff.

Councillor Louise Richardson, cabinet member for health and wellbeing, said: "I am so pleased to see our new Healthy Workplaces Leicestershire programme launch. We spend so much of our adult life at work that it is important that we make steps to ensure both our physical and mental health is looked after in the workplace.

"We are excited to see this new initiative bring a positive impact to the health and wellbeing of our residents and workforce."

Are you interested in your business or organisation getting involved? Visit healthyworkplacesleicestershire.co.uk for more information.

Family friendly health courses this autumn

Our weight management team is bringing back the popular free Healthy Eating, Healthy Activity programme for children aged between four and 17 and their families.

Over the eight weeks, families are guided by a friendly and dedicated nutritionist to answer any questions and provide helpful information to help encourage a healthy lifestyle.

As well as simple, healthy recipes for the whole family to follow and enjoy, there are also tips on manageable physical activity for the whole family.

Families across Leicestershire have already benefitted from the course, with one parent saying: "The programme has been amazing, so helpful and personalised. We did lots of fun games and set ourselves a challenge each week. It's a helpful tool, for people who don't have as much information. It's been fun for the kids and been good to talk about different things to do with food."

The new programme is starting in Charnwood in September. Find out more, including how to register your family's interest by visiting leicestershirewms.co.uk



Forest working for prestigious global status

Charnwood Forest is at the heart of the county. With sites within the forest including Beacon Hill Country Park, Bradgate Park and Swithland Wood, one of the oldest animal fossils in the world was discovered in the park and dates back 600 million years.

Now we are working with partners including the National Forest to secure prestigious UNESCO Global Geopark status. National Lottery Heritage Funding is helping the project to promote the area's incredibly long and rich history.

As well as making more people aware of Charnwood Forest, which sits on our doorstep, the funding will also support sustainable tourism from people looking to visit the area.

Councillor Blake Pain, cabinet member for environment and the green agenda, said: "We're pleased to be working with partners to showcase Charnwood Forest's amazing and unique history.

"We all have a responsibility to care for our region's geological heritage and this National Lottery Heritage funding will go a long way to our hopes of securing UNESCO Global Geopark status."

There are currently eight UK UNESCO Global Geoparks including the English Riviera in Devon, Brecon Beacons and the Shetland Islands. Becoming the ninth area would see Charnwood Forest joining this group of significant sites.

Recipe for BBQ success

We're well into summer and cooking, eating and enjoying the outside with friends and family is one of the best parts of this time of year.

With barbecues already happening across Leicestershire, it's easy to forget that millions of pounds worth of barbecue food is wasted nationally every year.

Top tips about planning, storage and usage are online to help you put on a spread that saves you time and money.

You can also get ideas for how to use leftovers from barbecues and other meals in our new online recipe hub.

All of the recipes, including a pasta bake, pesto chicken pasta and leftover lime loaf have been submitted by residents.

Councillor Blake Pain, cabinet member for environment and waste, said: "Every person in Leicestershire can make a big difference by taking small steps to reduce food waste, such as planning meals and storing food correctly, which could save their family more than £700 a year.

"Avoiding food waste from a barbecue is really easy, saves money and avoids unnecessary food waste in your bin."

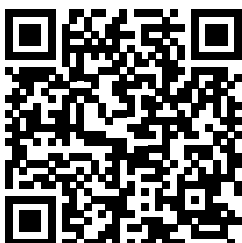
Find out more about our recipe hub, and info to help you reduce the amount of waste you produce at lesswaste.org.uk

Remember, disposable barbecues and coal aren't recyclable. Making sure they are completely cool first, they should be placed in the refuse bin or taken to your nearest recycling and household waste site.



Did you know?

Beacon Hill is one of the area's many Sites of Special Scientific Interest and includes outcrops of rocks formed more than 560 million years ago at the bottom of an ancient ocean. For more information search "Charnwood Forest" or go to www.visitleicester.info



LEISURE

Enjoy some great days out this

SUMMER



BOSWORTH

BATTLEFIELD HERITAGE CENTRE
AND COUNTRY PARK

**Explore the stories behind the
Battle of Bosworth in 1485 and
the death of Richard III.**

Sutton Cheney, Leicestershire, CV13 0AD
bosworthbattlefield.org.uk
Tel: 01455 290429
Bosworth@leics.gov.uk
📱 @bosworthbattlefield
Open daily Nov to March 10am-4pm
and April to October 10am-5pm.



19-20
August
2023

**Sat 19 & Sun 20 August, 10am-4pm,
adults £5, children £3.50, under 3s free.**

Visitors will be able to get up close to
medieval history at the living history camp,
where re-enactment groups from the
Wars of the Roses Federation will recreate
Yorkist and Lancastrian camps. An exciting
programme of family friendly activities will
run throughout both days, including archery
and combat demonstrations, a fashion show
and a walk-through Battle of Bosworth.



THE
1620s
HOUSE & GARDEN
at Donington le Heath

**Explore the historic 1620s manor
house with links to the Gunpowder
Plot, or unearth the natural beauty
of the gardens.**

Manor Road, Donington le Heath, LE67 2FW
1620shouse.org.uk Tel: 01455 290429
Open Thurs to Sun, 10.30am-4.30pm.
📱 @1620shouse

**Special
event**

**The Tales of Peter Rabbit
Open Air Theatre**

**Weds 26 July, 3.30pm-5pm, adults £16,
child £10, (under 3s free), concession £14,
family (two adults, two children) £48.
Pre-booking is essential.**

Peter and his naughty cousin
Benjamin know very well that they
are not to go into Mr McGregor's
Garden, but they cannot resist and
soon they find themselves in all sorts of scrapes.



Beaumanor Hall

**A Victorian country house set in 34 acres of idyllic countryside,
bursting with exciting events and things to do.**

Woodhouse, Leicestershire, LE12 8TX
beaumanorhall.co.uk
Tel: 01509 890119
📱 @beaumanorhall



Join Beaumanor's holiday activity club
this summer for exciting outdoors
activities for children aged 7-14. From
high ropes and canoeing to mountain
biking and climbing, there's something
for every adventurer to enjoy. From £40
per child, per day. Childcare vouchers
also accepted. Search 'Beaumanor' on
Eventbrite to book or give us a call.
beaumanorhall.co.uk/outdoor-activities

Summer Fair

**Sat 5 & Sun 6 Aug, 10am-4pm,
£3 entry (free parking).**

A summer BBQ, topped with
refreshments and live music
with an array of stalls from
local makers, artisans and
crafters. For stall enquiries,
email beaumanorevents@leics.gov.uk
or call 01509 890119

**Only
£3**

**Save
the
date**

Wedding Fair

**Sun 24 Sept, 11am-3pm.
Free admission and parking.**



Ashby Road, Coalville, LE67 3LN
Book online at centurytheatre.co.uk
or call the box office 01530 278444
📱 /TheCenturyTheatre @century_theatre

Queen II

Fri 15 September, 7.30pm, £18-£20

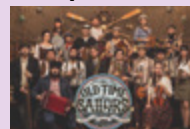
Performing hits from every decade of
Queen's musical legacy – Queen II truly
are the Champions of Tributes!

**Book
now**

Old Time Sailors

Thurs 28 September, 7.30pm, £18

Join the fantastic
17-piece band promising sea
shanties and shenanigans...
all the way from Cornwall.



Beacon Hill Country Park

Beacon Road, Woodhouse Eaves,
Leicestershire, LE12 8SP
leicescountryparks.org.uk
leicescountryparks

New sculpture trail now open

A popular free sculpture trail has returned to Charnwood this summer, moving from its previous home of the Outwoods, to Beacon Hill Country Park. 'Up to the Beacon Sculpture Trail' is organised by ArtSpace Loughborough. The artwork will remain in place until 17 September. Car parking charges apply for the country park. For further information visit artspace_lboro.co.uk



A willow fox
by Jo Sheppard

Ready, Set, Read!

Summer Reading Challenge

Sat 1 July - Sat 2 September

This year's Summer Reading Challenge is all about keeping children's minds and bodies active over the summer break. Thousands of children age 4-12 years take part in the challenge every summer, which inspires children to visit their local library and read or listen to six books, e-books or audio books. From 1 July to 2 September, our Leicestershire libraries will be encouraging children to get involved and join in on creative activities and events. Go to your local library to find out more or visit: leicestershire.gov.uk/src



YOUR **LiBR@RY**
KNOWLEDGE • DISCOVERY • ENTERTAINMENT

LeicsLibraries
leicestershire.gov.uk/libraries



Harborough Museum

The Symington Building,
Adam and Eve Street, Market Harborough, LE16 7LT
harboroughmuseum.org.uk Tel: 0116 305 3627

We are Harborough

Open until August 2023,
Tue to Fri, 10am-6pm and
Sat, 10am-4pm. **FREE ENTRY**

Exploring the diversity of communities which are part of the district, this exhibition showcases work that was developed through the 'We are Harborough' project led by Culture Leicestershire. Ukrainians and their host families share their experiences of the district, gypsy and traveller communities explain common myths, young people share what Harborough means to them through music, families share songs and heritage volunteers delve into the archives to share unique images. Head down to the museum to open a window into Harborough's past.

cultureleicestershire.co.uk @CultureLeics



Other museums around Leicestershire:

Melton Museum



Traces the history of Melton and includes exhibitions on the world-

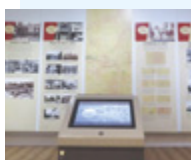
renowned Stilton cheese and pork pie industries, and the history of fox hunting, with collections from the Bronze Age to present day.

Thorpe End, Melton Mowbray, LE13 1RB
meltonmuseum.org
Tel: 0116 305 3860
Open Tues to Sat 10am-4.30pm.
Closed Mon and Sun. **FREE ENTRY.**



Mapping Melton

Open until 16 December 2023
Tues to Sat, 10am-4.30pm.
FREE ENTRY



Melton Mowbray's long and celebrated history is brought to life in this new exhibition, with the magnificent Latham map as its

centre piece. Through colourful graphic panels showing annotated modern and historic maps, an information filled flip book and a fascinating animated film, this exhibition explores how Melton Mowbray has changed and evolved. Uncover your inner explorer and Melton's historic mapping.

Charnwood Museum



Featuring a wide range of exhibits reflecting the history, geology, archaeology and industries of Charnwood and the surrounding area.

Granby Street, Loughborough, LE11 3DU
charnwoodmuseum.co.uk
Tel: 01509 233754
Open Wed to Sat 10am-3pm.
Closed Sun, Mon and Tues. **FREE ENTRY.**



Loughborough Landmarks

Open from Sat 15 July,
Weds to Sat, 10am-4pm and
Sun, 1-4pm. **FREE ENTRY**

Loughborough Landmarks showcases a number of iconic landmarks from around the town in celebration of the centenary of the Carillon Tower, which was voted as the number one landmark of Loughborough by the public.

The Record Office for Leicester, Leicestershire and Rutland

A range of resources for researching local history and culture. Extensive collections, dating from early 1100s.

Long Street, Wigston Magna, LE18 2AH
recordoffice.org.uk Tel: 0116 257 1080

Caring for carers

Many people don't realise they're a carer and that support is available

There are more than 5,000 registered carers in Leicestershire, making a huge contribution to the lives of people who need help with their everyday life.

It's expected that many more people are classed as carers but either don't know they are or haven't come forward. Remember, if you're not employed to look after or help support someone, you are an unpaid carer.

If you are, or know anyone who is a carer, you'll know that it can be rewarding and fulfilling experience that's also physically and emotionally demanding. Recognising yourself as a carer is the first step to finding the right support for the practical challenges you face.

Whether you care for an adult or a parent, or if you're a young carer, support is available.

We helped carers over 3,000 times last year by providing advice, assessments and financial and emotional support.



Christine Radford

Councillor Christine Radford, cabinet member for adults and communities, said: "Carers make an enormous difference to the lives of people they support and it's important that we're there to help carers with their duties.

"If you're a carer and need support, or think you're classed as a carer please talk to us. We want to help as much as we can to make your life easier."

Carer types – are you one?

- **Adult carer** - An adult who provides care for another adult who needs care and support, or a parent caring for your child who is over the age of 18. For further information and support visit leicestershire.gov.uk/looking-after-someone

- **Parent carer** - A parent or guardian who supports an ill or disabled child (under 18 years) and undertakes parent carer caring duties more than would be expected in a parenting role. Parent carers can get an assessment for the support they need at leicestershire.gov.uk/parent-carers-assessment
- **Young carer** - A child or young person, aged 18 years or under, who provides regular and ongoing care and emotional support to a family member who is physically or mentally ill, disabled or misuses substances. If you think you might be a young carer, visit leicestershire.gov.uk/young-carers

Get help from Support for Carers



Funded by us and run by Voluntary Action South Leicestershire (VASL), Support for Carers has helped 13,200 carers over the last 10 years.

This is a free service for anyone aged over 18 and caring for another adult to help carers, including a telephone befriending service, support groups, tips, buddy scheme and tips. Visit supportforcarers.org or call 01858 468 543.

Grant support success

We've given out nearly £40,000 of Government-funded grants to carers. Almost 140 carers received an average of £288 each to help them cope with additional costs incurred since the person they were caring for was discharged from hospital. Through the grant we were also able to discover 94 new carers who can now talk to our carers team.

Young carers: in their words

“Twelve-year-old Natalie has been offering emotional support to a family member for the

past four to five years. She has received one-to-one support sessions in her home from the Young Carer Team.

She said: "It really helped me to cope. Just having someone to talk to, or me writing things down, was good. I feel that I know enough now to help me going forward."

She is now in contact with another young carer after the team arranged for a group of them to attend an event at Leicester City Football Club as part of Young Carers Action Day.

She added: "Getting in touch with the team is a good thing to do – it can help you cope with whatever's going on."

Natalie's mum added: "The support we received from the Young Carer Team was brilliant – they helped Natalie to realise the importance of the care she has given to someone else, and also the impact that can have on a young person."

"The team are really responsive and supportive – they made Natalie feel like a special person."

Trading Standards advice to keep you safe



Charity donations

Our Trading Standards team recently helped a Leicestershire resident who gave thousands of pounds to charities after being bombarded with letters asking for donations.

The kind-hearted resident started donating to several charities they wanted to support, but soon began receiving letters asking to increase the amount. Hundreds of letters from other charities they had never had contact with followed soon after and out of kindness and feelings of guilt, the resident made more and more donations.

Leicestershire Trading Standards Service stepped in to help the resident stop making donations to the charities they did not want to give money to. They also contacted over 90 charities to request the resident's details were removed from their mailing lists.

Thankfully the resident is now only donating to causes they want to support.

! Casting the net

It's difficult to know where organisations can get your details from as fundraisers can cast a wide net. For example, a charity focused on children's leukaemia might look at anyone who has:

- Donated to a similar charity
- Shown an interest in leukaemia
- Reacted positively to children's issues
- Donated to other cancer charities

! What can you do?

- **Be alert** – Check the marketing permissions when signing up
- **No third party** – It's important to make sure you've selected not to receive third party marketing
- **Block unwanted contacts** – Sign up to the Mailing Preference Service [mpsonline.org.uk](https://www.mpsonline.org.uk) or the Fundraising Preference Service [fundraisingpreference.org.uk](https://www.fundraisingpreference.org.uk)

Buying a second hand car

From clocked mileage false documents and cars being faulty as soon as they leave the garage, our Trading Standards team has seen an increase in complaints about second hand cars.

Cars bought and sold on social media or eBay can have more problems as people are more likely to put down deposits or pay for a vehicle without knowing the full condition.

Complaints have been received by people who bought cars in a layby, meaning the seller can't be contacted if any problems appear. Sellers in these circumstances also claim they are private sellers, so buyers have no rights under the Consumer Rights Act.

Remember, if you've bought a second hand car from a garage, most will come with a free 3 month warranty, but these don't always cover wear and tear.

Deputy council leader Deborah Taylor, said: "We're working hard to help protect residents, businesses and other road users. Buying a car is a significant investment for most of us, and we urge you to take time, take caution. If it seems too good to be true, it probably is."

! What can you do?

- **Carry out all your checks** – visit gov.uk/check-mot-history to check a vehicle's MOT history
- **Never buy** – a vehicle in a layby or without viewing the car first
- **Credit card purchase** – if you can, pay on credit card
- **Get a HPI check** – these checks look at the history of the car

! Be cautious!

The complaints our Trading Standards team have had include:

- Faulty as soon as leave garage
- Clocked mileage
- False documents – MOT/service histories
- Unroadworthy/unsafe – brakes, steering, suspension

For support on either of these issues, contact Citizens Advice Consumer Helpline on 0808 223 1133 or scan here for more information →



Your support this summer

COST of LIVING SUPPORT

We've now made £22m of wide-ranging support available to help ease cost of living pressures – and here you can find out more what's available this summer.

Free summer holiday clubs



Zorbing, crafts, Kwik cricket,

cooking, Nerf, dancing, games, drama, football and quizzes... These are just some of the free activities available to children and young people through 'Leicestershire Holidays Together' – a Holiday Activities and Food programme funded by the Department for Education and run locally in partnership with Active Together.

If your child qualifies for benefits related free school meals, you can sign them up for the sessions. Check out the activities at leicestershire.gov.uk/haf

Community fridges

Our community fridges are free and open to all - and rescue food from going to landfill, just because it's close to its best before date. Locations: Wigston Magna, Coalville, Hinckley, Mountsorrel and Shelthorpe – visit lesswaste.org.uk and search Community Fridges



The community kitchen at Coalville

Food and fuel support



Food vouchers to the value of £90 per child are available this summer

for children in receipt of benefits related free school meals.

Around 14,000 children across Leicestershire benefit from £15 per week of school food vouchers during holidays.

Individuals and families who are struggling financially can also apply for food and fuel vouchers.

More details, including eligibility information, can be found at leicestershire.gov.uk/household-support-fund

Boost your skills

Support to write CVs and improve confidence with numbers is available.

Building skills after the Covid pandemic is still really important and our popular Work & Skills scheme offers help with CV and letter writing, interviews and more.

And Multiply – a three-year Government-funded project improving numeracy skills – is also up and running.



Peter Bedford

Councillor Peter Bedford, cabinet member for recovery and transformation, said: "Work & Skills has already improved the working lives of around 1,300 people. And improved numeracy can help with everyday tasks including managing household expenses and supporting children with homework. Courses are available now and I'd encourage people to book on."

work&skills
Leicestershire



Environmentally friendly new school proposals well underway

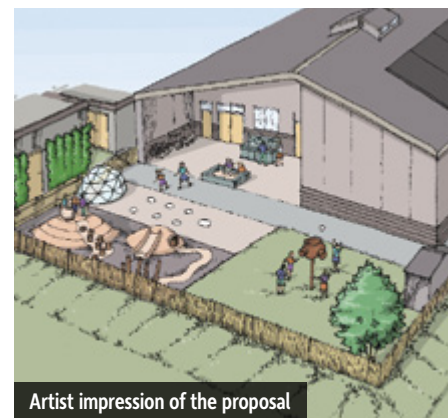
Plans for the first new school in over 20 years to be built in Market Harborough have been drawn up. The proposed primary school at the new Airfield Farm housing development would

accommodate up to 210 pupils across seven classrooms and a specialist teaching room for practical subjects such as cookery.


If approved the school would feature solar panels and air source heat pumps

to make it as green as possible.

Deputy leader, Deborah Taylor, said: "Leicestershire is growing so we're working hard to create school places where they're needed."



Artist impression of the proposal



(L-R) Rachael Underwood
from the Family Hub
at Loughborough with
Councillor Deborah Taylor

Support and advice for families across the county



Leicestershire

The new one stop shops where parents and carers can access support and advice are now up and running across Leicestershire.

Coalville, Melton Mowbray and Hinckley hubs became the first of many to open, where families with children between 0-19 (or 25 for young people with special educational needs or disabilities) can receive information on a range of issues.

Parents, carers, young people and professionals can easily receive support from our family hubs, right from conception, helping them to navigate parenting through the early years, right into adulthood.

Leicestershire is one of 12 local authorities to get a slice of £12m in Government funding to enhance the help we can give to families.

Staff will provide support and advice plus signposting to other organisations and local agencies, on a variety of topics, including

parenting, child development, health and wellbeing, relationships, housing, finances, education and employment.

Deputy leader, Deborah Taylor, said: "Our growing network of family hubs mark an important milestone in our ongoing commitment to supporting families and strengthening our communities here in Leicestershire.

"We recognise the challenges that parents and carers face on a daily basis, and it is vital that we provide readily accessible support networks."

Information, advice and support will also be able online through a new website set to launch soon, meaning parents are able to get the help they need virtually.

Open now at:

- Coalville
- Hinckley
- Loughborough
- Melton Mowbray
- Wigston Magna

Opening soon

- By autumn 2023:

Wigston, Braunstone Town, Huncote, Syston, Shelthorpe, Thurmaston, Earl Shilton Bagworth, Barwell, Hinckley Library

- By winter 2023/early 2024:

Lutterworth, Castle Donington, Loughborough Library, Measham, Moira, Broughton Astley, Greenhill

Find out more at familyhubsleicestershire.org.uk

Work & Skills is
here to support you
wherever you are on
your career journey.



www.leicestershire.gov.uk/work-and-skills

CV writing skills | Job search | Interview techniques
Learning, training or volunteering opportunities
Digital training | Information, advice and guidance



Funded by
UK Government



Leicestershire
County Council

Getting better with numbers



If you are aged 19 or over and you're looking to boost your confidence with numbers and polish up your maths skills, our new Multiply courses can get you to where you want to be.

Courses include:

- Cook, meet and eat
- Numbers for home
- Applications and games using maths skills



**SKILLS
FOR LIFE**
MULTIPLY



Funded by
UK Government

digital
Leicestershire



GIGAHUBS are coming...

Boosting broadband access and
speeds in rural areas

Sign up for our newsletter to find out more
digital-leicestershire.org.uk/register-for-notifications

