

CO-ORDINATED ADMISSION ARRANGEMENTS FOR MID-TERM TRANSFERS 2023-24 ACADEMIC YEAR

FOR:

- List of Local Authority (LA) Controlled Community Schools see Appendix 1
- List of Own Admitting Authorities - Academies Participating in the LA's Co-ordinated arrangements see Appendix 2
- List of Own Admitting Authorities - Academies that conduct their own Co-ordinated arrangements see Appendix 3

[Ratified February 2022]

Gurjit Singh Bahra

School Admissions and Pupil Services.

Contents

1.	Introduction	2
2.	Main obligations imposed by the regulations.....	3

3.	Administration of the LA's Mid-Term Arrangements	3
4.	'Mid-Term Arrangements Timetable (for participating Schools)	5
	Appendix 1: LIST OF MAINTAINED / COMMUNITY SCHOOLS FOLLOWING THIS MID-TERM CO-ORDINATED SCHEME	8
	Appendix 2: LIST OF ACADEMIES PARTICIPATING IN THE LA'S MID-TERM CO-ORDINATED SCHEME	10
	Appendix 3: ACADEMIES RUNNING THEIR OWN ARRANGEMENTS	14
	ACADEMIES YET TO CONFIRM THEIR ARRANGEMENTS	20

1. Definition

- For all maintained schools and for those academies that are participate in the Local Authority's (LA) co-ordinated mid-term arrangements (see appendix 1 and 2). Leicestershire's School Admissions Service will process mid-term transfers from the Autumn Term 2021 as explained in this document.
- For schools and academies in appendix 1 and 2, you can either apply on paper using the Local Authority's paper common application see page 6 or you can request a form by calling 0116 305 6684 (if you cannot print the form), or online at [Apply to move school](#).

2. Introduction

2.1. From September 2021 the School Admissions Code 2021 requires all LAs to host all schools' Mid-Term (In-Year) Arrangements (but not special schools) within its area. The purpose of this document is to establish mechanisms for ensuring, as far as reasonably practical, that every parent of a child living within the LA understands how to apply for a school that they wish their child to attend.

2.2. The duty to comply with parental preference is not affected by the co-ordinated Mid-Term admission arrangements, except where more than one school place could be offered. Nor do these arrangements affect the rights and duties of governing bodies of own admitting authorities (OAA) i.e. academies, that are participating in LA's arrangements as detail at appendix 2. Academies not participating in the LA's arrangements and instead have their own set of arrangements are listed at appendix 3. For these academies they will set and apply their own Mid-Term admission arrangements.

2.3. Where an application arrives via the LA for an OAA that does not participate in the LA's co-ordinated scheme the LA will forward the application the OAA to swiftly process. For maintained and OAAs participating in the LA's arrangement it will be the LA that will process the application form.

Main obligations imposed by the regulations

School Admissions Code (September) 2021.

2.4. The common application form must allow parents to express a preference for at least 3 School, which may be for schools within or beyond their home local authority area, and the reasons for their preferences. The best way to apply for school list in appendixes 1 and 2, is through the LA's [online application form](#).

2.5. Local authorities and admission authorities in the area must exchange information on the availability of vacancies in order to process applications quickly and to make decisions within dates specified in these arrangements.

- 2.6. Offers of places will be made swiftly by the LA for schools and academies participating in these arrangements. Schools and academies participating in the LA's arrangements must not contact parents about the outcome of their application until after an offer has been made by the local authority.
- 2.7. Parents who cannot be offered one of their preferred schools must, if there are places available, be informed of where places exist at other school(s).
- 2.8. While there is no requirement to co-ordinate fully across borders, it is good practice for local authorities to eliminate multiple offers of places across borders and many local authorities already co-ordinate in this way. Regulations provide that where a place can potentially be offered at schools in two or more local authority areas, and the local authorities concerned agree, only one offer of a place is made. Where they do so, schemes must specify which local authority will make the offer of a single place. However, it is still possible that some parents who have applied for schools within their own local authority and elsewhere may receive an offer from each local authority.
- 2.9. The arrangements must continue to ensure that places which become available are reallocated effectively.

3. Administration of the LA's Mid-Term Arrangements

NB¹ For all dates mentioned below, if the date is not a working/school day (depending on school holidays), then close of business is on the next working day applies.

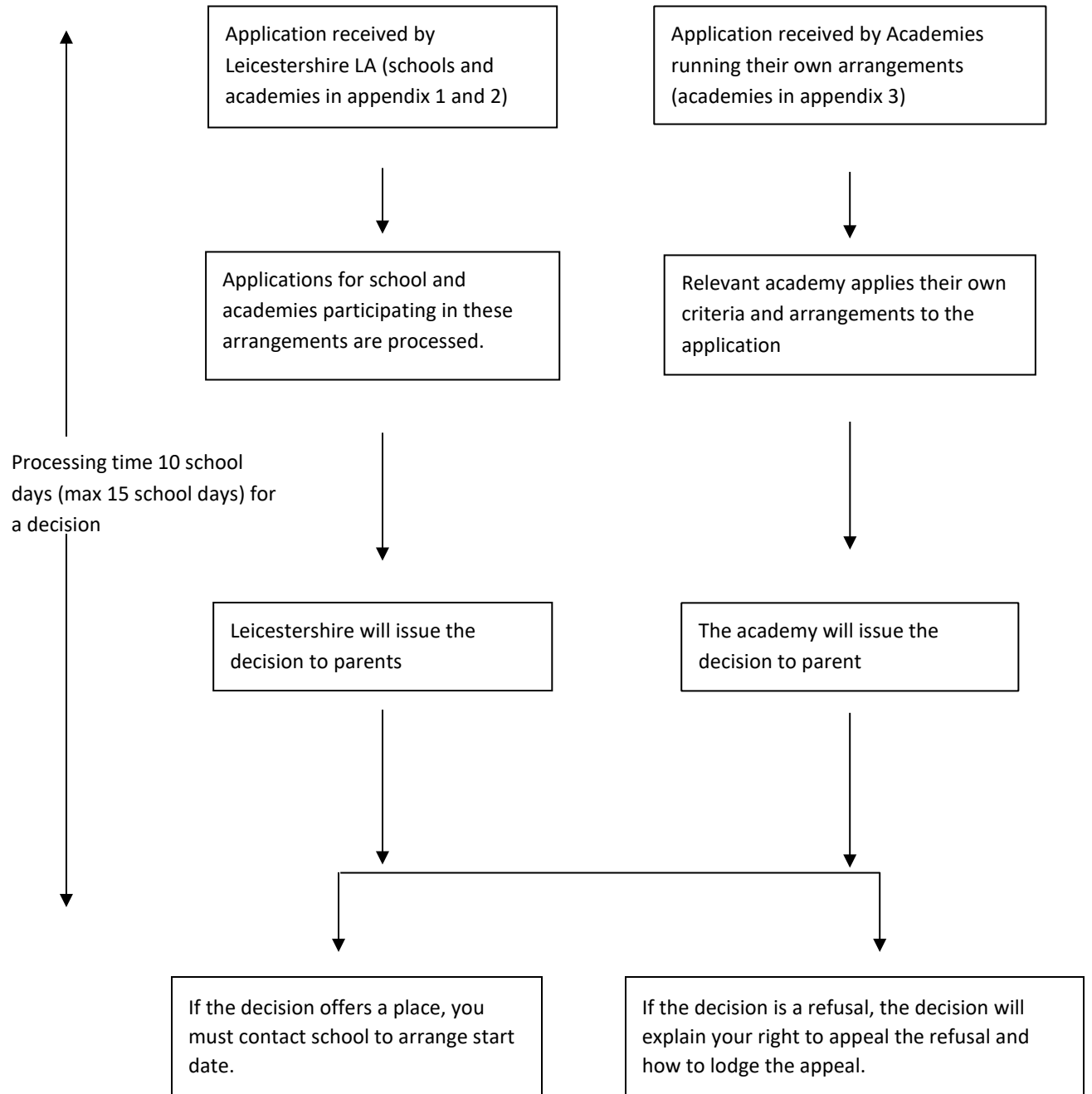
- 3.1. Leicestershire's common mid-term co-ordinated admission application form invites those parents, resident in Leicestershire wishing to transfer part way through an academic year to name up to three preferred school(s) listed in appendix 1 and 2 only. The preferences parents make must name the school(s) in ranked order. Although parents rank their preferences, all preferences will be treated as equal by the LA when applying criteria. Ranking only applies when more than one school can be allocated as a means to decide which school should be offered, i.e. the parents highest ranking school will be offered.
- 3.2. Leicestershire residents who wish to apply for a school within the area of another local authority should apply direct to that LA using their processes. NonLeicestershire residents who wish to apply for a place in Leicestershire should apply direct to Leicestershire if listed in appendix 1 and 2, or follow the processes detailed in all other appendixes concerning applying to schools who intend to run their own arrangements.
- 3.3. Applications for VA, Academy, Studio, or Trust School that have their own arrangements in Leicestershire will be kept informed of applications and decisions. Any additional information (if required) will be requested directly by the LA. In addition, all academies are required (para 2.22) of the 2021 Code to communicate the availability of places to the LA (or parent if not participating in these arrangements) when requested (within 2 school days of the request). Once the admitting authority has made their decision, they will disclose their decision to the applicant and LA.

- 3.4. Leicestershire LA applies its own admissions criteria to requests for places to Leicestershire community, voluntary controlled schools and applies the individual academy's criteria if they participate in these arrangements.
- 3.5. Where a child qualifies for more than one offer of a place, the highest-ranking school expressed will be offered. If the application unsuccessful the parent will be informed of their right to appeal and to contact the LA about other schools that may have availability.
- 3.6. If Leicestershire is made aware that another LA will be making an offer of a place in a school which is higher up the parent's order of ranking than the school to be offered by Leicestershire LA, then Leicestershire LA will not make an offer for a place in a Leicestershire school.
- 3.7. If any Leicestershire child looks like remaining unplaced, Leicestershire considers how to place them in school within its area, having regard to any reasons expressed by the parent for their unsuccessful preferences.
- 3.8. For Year-7 applications received after 1 September 2022 and beyond (in the year of entry) these will be considered as mid-term applications. For schools where Leicestershire is the admitting authority and for those OAA academies participating in these arrangements it will maintain an oversubscription waiting list (OSL) for a minimum of the Autumn Term in the academic year of admission (until 31 December of each school in the year of admission), ranked in the same order as the published oversubscription criteria.

4. 'Mid-Term Arrangements Timetable' (for participating Schools)

Notable timeframes identified below:

- Leicestershire will process all applications within 15 working or school days (depending on school holidays) from the date the application has been received by the LA for all schools participating in these arrangements.
- Leicestershire will offer places where possible on a daily basis by 4 pm, where this is not possible it will move to the next available offer date.
- Wherever possible Leicestershire will process an application within 15 working/school days (subject to Fair Access protocol).



OFFICE USE ONLY
Date Received:

**COMMON ADMISSION APPLICATION
FORM FOR IN YEAR ADMISSIONS**
(Including applications to Voluntary Aided,
Foundation, Trust, Academy and Free Schools)
Leicestershire residents only



It is very important that:

- You read all guidance notes and visit www.leicestershire.gov.uk/admissions for further information or contact School Admissions on Tel 0116 305 2070
- You complete all sections – failure to do so may delay the processing of this form
- The person completing this form has legal responsibility for the child

Section 1 - PUPIL DETAILS (please make sure ALL details are correct and amend if not)

First Name: <input type="text"/>	Surname: <input type="text"/>
Male <input type="checkbox"/> Female <input type="checkbox"/> Date of Birth: <input type="text"/>	Tel No: <input type="text"/>
Address: <input type="text"/>	Mobile No: <input type="text"/>
	Email Address: <input type="text"/>
Postcode: <input type="text"/>	Current School: <input type="text"/>
	Preferred Start Date: <input type="text"/>
Parent/Guardian details:	
Mr/Mrs/Ms/Miss/Other: <input type="text"/>	Print Name: <input type="text"/>
Is the pupil looked after or previously looked after by a Local Authority? <input type="text"/>	
Please name the Authority: <input type="text"/>	

Section 2 - SCHOOL PREFERENCES (You must complete this section)

Our aim is to meet your first preference however there is no guarantee of a place even at your catchment area school. Therefore give consideration to making up to three school preferences, and to putting your catchment area school as one of your preferences. It is not necessary to name three schools unless you wish to do so.

1) First preference: <input type="text"/>
Reasons i.e. catchment school, siblings, serious medical, exceptional social/domestic needs (professional documentation required), attach separate sheet if needed. <input type="text"/>
2) Second preference: <input type="text"/>
Reasons i.e. catchment school, siblings, serious medical, exceptional social/domestic needs (professional documentation required), attach separate sheet if needed. <input type="text"/>
3) Third preference: <input type="text"/>
Reasons i.e. catchment school, siblings, serious medical, exceptional social/domestic needs (professional documentation required), attach separate sheet if needed. <input type="text"/>

You can apply on-line at www.leicestershire.gov.uk/admissions

Section 3 – Additional Child/Family Information (completing this section may help us to give a higher priority to your case.)

Does the child have a Statement or Education Health and Care Plan?

Yes ☐ No ☐

If your child has mobility issues or is a wheelchair user and you wish to speak to an Admissions Officer about Partially Accessible or Pathway schools please contact Tel: 0116 305 2070.

Your relationship to the child:

Parent:

Mother

☐

Carer:

Guardian

☐

Father

☐

Foster Carer

☐

Step-parent

☐

Social Worker

☐

If Social Worker or Lead Professional:

(please give full contact details):

Does your child have a brother / sister already attending any of your preferred school(s) (Section 2)

YES ☐

NO ☐

If 'YES' please give full details below:

Name of Brother/Sister:

Date of Birth:

Year Group:

Name of school they are attending:

1

Home Address if
different to Section 1

Is the child new to Leicestershire? Yes ☐ No ☐ if yes, where from?

Please state your child's English language ability: Fluent ☐ Intermediate ☐ Beginner ☐

What is your child's first language?

Section 4 - DECLARATION

I declare all the information I have provided is true. I also understand that any allegation of false or fraudulent information to gain a school place will result in the Council taking reasonable steps to ascertain the accuracy of the information. If the information is found to be false it may result in my child losing their place.



Data Protection Act 1998. The information you supply will be held in a computer database which will be used by Leicestershire Local Authority and the other admissions authorities to which you are applying for a school place. The information will be used for the sole purpose of fulfilling the Local Authority's statutory and operational needs in the area of school allocations and associated matters.

Signature of Parent/Guardian:

Date:

**What to
do next:**

- Check all completed sections and keep a copy of this form
- If you need any help, contact School Admissions. Tel: 0116 305 2070 from 8.30am to 5.00pm (4.30pm on Fridays).

- **RETURN** this form to:

**SCHOOL ADMISSIONS
LEICESTERSHIRE COUNTY COUNCIL,
COUNTY HALL, GLENFIELD,
LEICESTER LE3 8RF**

Or apply online @ www.leicestershire.gov.uk/admissions

Please refer to the Leicestershire County Council website or School Admissions for confirmation of the closing date. Applications received after the closing date will be treated as late.

**Appendix 1: LIST OF MAINTAINED / COMMUNITY SCHOOLS
FOLLOWING THIS
MID-TERM CO-ORDINATED SCHEME**

PRIMARY SCHOOLS	Website Contact
Anstey The Latimer School	www.latimerprimary.co.uk

Appleby Magna CoFE Primary School	www.sirjohnmoore.co.uk
Ashby-De-La-Zouch CoFE Primary School	www.ashbyce.leics.sch.uk
Ashby-De-La-Zouch Woodcote Primary School	www.woodcoteprimary.com/
Barwell Infant School	www.barwellinfantschool.co.uk
Barwell Newlands Primary School	www.newlands.leics.sch.uk
Belton CoFE England Primary School	www.belton.leics.sch.uk
Billesdon Parochial Primary School	www.billesdon.leics.sch.uk
Blaby Thistly Meadow Primary School	www.thistlymeadow.net
Braunstone Ravenhurst Primary School	www.ravenhurst.leics.sch.uk
Breedon St Hardulphs CoFE Primary. School	www.st-hardulphs.leics.sch.uk
Broughton Astley Orchard CoFE Primary School	www.orchardcofe.leics.sch.uk
Buckminster Primary School	www.buckminster.leics.sch.uk
Burbage Church Of England Infant School	www.burbageinfants.org
Burbage Junior School	www.burbage-jun.leics.sch.uk
Burbage Sketchley Hill Primary School	www.sketchleyhill.leics.sch.uk
Burton-On-The-Wolds Primary School	www.burton-on-the-wolds-school.org
Castle Donington Orchard Primary School	www.orchardprimary.org
Castle Donington St Edwards CoFE Primary	www.stedwards-cd.leics.sch.uk
Coalville All Saints CoFE Primary School	www.allsaints-coalville.leics.sch.uk
Coalville Belvoirdale Primary School	www.belvoirdale.org
Coalville Warren Hills Primary School	www.warrenhills.leics.sch.uk
Congerstone Primary School	www.congerstone.leics.sch.uk
Cossington CoFE Primary School	www.cossingtonschool.org
Countesthorpe Greenfield Primary School	greenfieldprimary.net
Desford Com Primary School	www.desford.leics.sch.uk
Diseworth CoFE Primary School	www.diseworthprimary.co.uk
Donisthorpe Primary School	www.donisthorpeprimary.org
Ellistown Com Primary School	www.ellistown.leics.sch.uk
Fleckney CoFE Primary School	www.fleckney.leics.sch.uk
Foxton Primary School	www.foxton.leics.sch.uk
Glenfield The Hall School	www.thehallprimary.com/
Great Glen St Cuthberts CoFE Primary School	www.stcuthberts.leics.sch.uk
Griffydam Primary School	www.griffydam.leics.sch.uk
Groby Elizabeth Woodville Primary School	www.elizabethwoodvilleprimaryschool.co.uk
Groby Martinshaw Primary School	www.martinshaw.leics.sch.uk
Hallaton CoFE Primary School	www.hallatonprimary.co.uk
Harby CoFE Primary School	www.harbyprimary.org
Hathern CoFE Primary School	www.hathernprimary.org
Heather Primary School	www.heather.leics.sch.uk
Hemington Primary School	www.hemington.leics.sch.uk
Hinckley St. Mary's CoFE Primary School	www.stmarys.leics.sch.uk

Hinckley Westfield Infant School	www.westfield-inf.leics.sch.uk
Hinckley Westfield Junior School	www.westfield-jun.leics.sch.uk
Hose CoFE Primary School	www.hoseprimaryschool.co.uk
Hugglescote Com Primary School	www.hugglescote.leics.sch.uk
Ibstock Junior School	www.ibstockjuniorschool.co.uk
Ibstock St Denys CoFE Infant School	www.stdenysschool.com/
Kegworth Primary School	www.kegworthprimary.org
Kilby St Marys CoFE Primary School	www.kilby.leics.sch.uk
Little Bowden School	www.littlebowden.leics.sch.uk
Long Clawson CoFE Primary School	www.longclawson.leics.sch.uk
Long Whatton CoFE Primary School	www.longwhattonschool.org
Loughborough Booth Wood Primary School	www.boothwood.leics.sch.uk
Loughborough Thorpe Acre Infant School	www.tais.leics.sch.uk
Loughborough Thorpe Acre Junior School	www.thorpeacrejuniorschool.co.uk
Moira Primary School	www.moira.leics.sch.uk
Nailstone Dove Bank Primary School	www.dovebankprimary.co.uk
New Swannington Primary School	www.newswanningtonprimary.org.uk
Newbold CoFE Primary School	www.newbold-cecp.leics.sch.uk
Newbold Verdon Primary School	www.newboldverdonprimaryschool.co.uk
Newton Burgoland Primary School	www.newburland.leics.sch.uk
Packington CoFE Primary School	www.packington.leics.sch.uk
Quorn St Bartholomews CoFE Primary School	www.st-bartholomews.leics.sch.uk
Scalford CoFE Primary School	www.scalford.leics.sch.uk
Sheepy Magna CoFE Primary School	www.sheepymagna.leics.sch.uk
Shepshed Oxley Primary School	www.oxley-shepshed.leics.sch.uk
Shepshed St. Botolphs CoFE Primary School	www.st-botolphs.leics.sch.uk
Snarestone CoFE Primary School	www.snarestoneprimary.org
Stathern Primary School	www.stathern.leics.sch.uk
Swithland St Leonards CoFE Primary School	www.st-leonards.leics.sch.uk
Thurlaston CoFE Primary School	www.thurlaston.leics.sch.uk
Thurmaston Bishop Ellis Catholic Primary School	www.bishopellis.leics.sch.uk
Whetstone Badgerbrook Primary School	www.badgerbrook.org.uk
Whitwick St John The Baptist CoFE Primary	www.whitwickce.leics.sch.uk
Wigston Thythorn Field Com. Primary School	www.thythornfield.co.uk
Wigston Water Leys Primary School	www.waterleysprimaryschool.co.uk
Witherley CoFE Primary School	www.witherley.leics.sch.uk
Woodhouse Eaves St Pauls CoFE Primary School	www.st-pauls.leics.sch.uk
Woodstone Com Primary School	www.woodstoneprimary.co.ukweb
Worthington School	www.worthington.leics.sch.uk
Wymeswold CoFE Primary School	www.wymeswold.leics.sch.uk

Appendix 2: LIST OF ACADEMIES PARTICIPATING IN THE LA'S MID-TERM CO-ORDINATED SCHEME

Primary Schools	Link To Website
Ab Kettleby Primary School	www.abkettleby.org
Albert Village Primary School	www.albertvillage.leics.sch.uk
All Saint, Wigston	www.Allsaintscofe.leics.sch.uk
Asfordby Captains Close Primary School	www.captains-close.leics.sch.uk
Asfordby Hill Primary School	www.Asfordbyhill.leics.sch.uk
Ashby Hastings Primary School	www.ashbyhastingsprimary.co.uk
Ashby Hill Top Primary School	www.Ashbyhilltop.leics.sch.uk
Barlestone CofE Primary School	www.barlestoneprimarieschool.uk
Barwell C Of E Academy	www.Barwellceacademy.co.uk
Battling Brook Primary School - Hinckley	www.Bbrook.leics.sch.uk
Beacon Primary School - Loughborough	sites.google.com/a/aetinet.org/beacon-academy
Blaby Stokes Primary School	www.Blabystokes.co.uk
Bottesford Primary School	www.bottesfordprimary.co.uk
Brighthurst Primary School	www.Bringhurstprimary.co.uk
Brocks Hill Primary School - Oadby	www.Brockshill.org.uk
Brookside Primary School, Oadby	www.Brookside.leics.sch.uk
Broomfield Primary School - East Goscote	www.broomfield.bepschools.org
Broom Leys Primary School - Coalville	www.Broom-Leys.leics.sch.uk
Brownlow Primary School - Melton Mowbray	www.Brownlowprimary.org
Castle Donington Foxbridge Primary School	www.facebook.com/Foxbridgeprimarieschool
Christchurch St Peters CofE Primary School	www.mountsorrels.school.org.uk
Church Hill Infant Sch - Thurmaston	www.churchhillinfants.bepschools.org
Church Langton CofE Primary School	www.Churchlangton.leics.sch.uk
Cobden Primary School - Loughborough	www.Cobden.leics.sch.uk
Cosby Primary School	www.Cosby.School
Croft Primary School	www.croftprimarieschool.co.uk
Danemill Primary School - Enderby	www.Danemill.com
Eastfield Primary School - Thurmaston	www.eastfield.bepschools.org
Fairfield Primary School - Wigston	www.fairfieldcpschool.co.uk
Farndon Fields Primary School - Market Harborough	www.Farndonfields.org
Fernvale Primary School - Thurnby	www.fernvale.leics.sch.uk
Fossebrook Primary School – Braunstone	www.fossebrook.org.uk
Frisby Primary School	www.Frisby.leics.sch.uk
Gaddesby Primary School	www.gaddesby.bepschools.org
Glen Hills Primary School - Glen Parva	www.Glenhillsprimary.co.uk
Glenfield Primary School	www.glenfield.leics.sch.uk
Glenmere Primary School - Wigston	www.Glenmere.leics.sch.uk

Great Bowden Primary School	www.Greatbowden.leics.sch.uk
Great Dalby Primary School	www.greatdalby.bepschools.org
Greystoke Primary School - Narborough	greystoke.leics.sch.uk
Grove Primary School - Melton Mowbray	www.Groveprimaryschool.org
Hall Orchard Ce Primary School - Barrow	www.Hall-Orchard.leics.sch.uk
Hallam Fields Primary School - Birstall	www.Hallamfields.org.uk

Hallbrook Primary School - Broughton Astley	www.Hallbrook.leics.sch.uk
Higham on the Hill C Of E Primary	www.Higham-On-The-Hill.leics.sch.uk
Highcliffe Primary School - Birstall	www.Highcliffeacademy.org.uk
Highgate Primary School, Sileby	www.highgate.bepschools.org
Hinckley Parks Primary School	www.Hinckleyparksprimaryschool.uk
Holywell Primary School - Loughborough	www.Holywell.leics.sch.uk
Houghton on the Hill	www.Houghton.leics.sch.uk
Huncote Primary School	www.Huncoteprimary.org
Husbands Bosworth Primary School	www.Husbandsbosworth.leics.sch.uk
Kibworth C Of E Primary School	kibworthprimary.org.uk
Kingsway Primary School	www.Kingsway.org.uk
Kirby Muxloe Primary School	www.Kmprimary.leics.sch.uk
Lady Jane Grey Primary School - Groby	www.Ladyjanegreyprimary.org.uk
Langmoor Primary School - Oadby	www.Langmoor.leics.sch.uk
Launde Primary School - Oadby	www.Launde.leics.sch.uk
Little Hill Primary School - Wigston	www.Littlehill.leics.sch.uk
Loughborough C Of E Primary School	www.Loughborough-Primary.co.uk
Lubenham Primary Primary School	www.Lubenham.leics.sch.uk
Lutterworth Sherrier Primary School	www.Sherrierprimaryschool.co.uk
Manorfield Primary School, Stoney Stanton	www.Manorfield.leics.sch.uk
Market Harborough C of E Academy	www.Marketharboroughcofe.co.uk
Meadowdale Primary School - Market Harborough	www.Meadowdale.Info
Measham C Of E Primary School	www.Meashamprimary.org
Mercenfeld Primary School - Markfield	www.mercenfeld.bepschools.org
Merton Primary School - Syston	www.merton.bepschools.org
Millfield L.E.A.D Academy - Braunstone	www.Millfieldacademy.co.uk
Mountfields Primary School - Loughborough	www.Mountfieldslodge.leics.sch.uk
Newcroft Primary School – Shepshed	www.Newcroftprimaryacademy.co.uk
New Lubbesthorpe Primary School	www.Newlubbesthorpe.leics.sch.uk
Newtown Linford Primary School	www.newtown.bepschools.org
Oakthorpe Primary School	www.oakthorpeprimary.co.uk
Old Dalby Primary School	www.Olddalbyschool.org.uk
Old Mill Primary - Broughton Astley	www.Oldmillprimary.co.uk
Outwoods Edge Primary School - Loughborough	www.Outwoodsedge.leics.sch.uk

Parkland Primary School – South Wigston	www.parklandprimary.co.uk
Pastures Primary School - Narborough	www.Pasturesprimary.com
Pochin School - Barkby	www.pochin.bepschools.org
Ratby Primary School	www.ratby.bepschools.org
Red Hill Field Primary School - Narborough	www.Redhillfield.com
Redlands Primary School - Sileby	www.Redlands.org.uk
Rendell Primary School - Loughborough	www.rendellps.leics.sch.uk
Richard Hill Primary School,Thurcaston	www.Richardhillschool.co.uk
Richmond Primary School - Hinckley	www.Richmond.leics.sch.uk
Ridgeway Primary School - Market Harborough	Ridgewayprimary.com
Riverside Primary School - Birstall	www.Riversideacademy.org.uk
Robert Bakewell Primary School - Loughborough	www.Robertbakewellprimary.com
Rothley Primary School	www.Rothley.leics.sch.uk

Seagrave Primary School	www.seagrave.bepschools.org
Sherard Primary School, Melton	www.sherardschool.org
Sir John Moore – Appleby Magna	www.Sirjohnmoore.co.uk
Somerby Primary School	www.Somerby.org.uk
South Kilworth C Of E Primary	www.Southkilworthprimarieschool.com
St Andrew's Primary School - North Kilworth	www.Standrewsnorthkilworth.co.uk
St Lukes Primary School - Thurnby	www.st-lukes.leics.sch.uk
St Margaret's C Of E Primary School - Blackfordby	www.Blackfordbyschool.org
St Peter & St Paul Academy - Syston	www.spspacademy.org
St Peters CofE Primary School, Whetstone *	www.Stpeterswhetstone.co.uk
St Simons And St Judes CE Primary School	www.Stsimonandstjude.leics.sch.uk
Stafford Leys Academy - Leicester Forest East	www.staffordleys.bepschools.org
Stanton Under Bardon Primary School	www.Stanton-U-B.leics.sch.uk
Stonebow Primary School - Loughborough	www.Stonebow.leics.sch.uk
Swallowdale Primary School - Melton Mowbray	www.swallowdale.bepschools.org
Swanningon CofE Primary School	www.swanningtonceprimary.org
Swinford Primary School	www.swinford.leics.sch.uk
The Meadow Primary School – Wigston	www.meadowprimarieschool.co.uk
Thornton Primary School	www.Thornton.leics.sch.uk
Thringstone Primary School	www.Thringstone.leics.sch.uk
Thrussington Primary School	www.Thrussington.leics.sch.uk
Townlands C Of E Priacademy - Earl Shilton	www.Townlandsprimary.org
Tugby C Of E Primary	www.Tugby.leics.sch.uk
Viscount Beaumont C Of E Primary School - Coleorton	www.Viscountbeaumonts.leics.sch.uk
Willesley Primary School - Ashby	www.Ashbywillesley.org.uk
Woodland Grange Primary School, Oadby	www.Woodlandwideweb.org.uk
Woolden Hill Primary School - Anstey	www.wooldenhillprimary.org.uk

Waltham On The Wolds CE Primary School	www.Waltham.leics.sch.uk
Holy Cross Catholic Primary School – Whitwick *	www.Holycrosswhitwick.co.uk
Sacred Heart Catholic Vol Academy-Loughborough *	www.Sacredheart.leicester.sch.uk
Saint Francis Catholic Primary School, Melton *	st-francis.leics.sch.uk
St Clares Catholic Voluntary Academy – Coalville *	www.St-Clares.leics.sch.uk
St John Fisher CE Primary School - Wigston *	www.Stjohnfisher-Wigston.leics.sch.uk
St Josephs Catholic Vol Academy - Market Harborough *	www.Stjosephs.leics.sch.uk
St Marys Catholic Primary School - Loughborough *	www.Stmarysloughborough.org.uk
Saint Peters Catholic Primary School - Earl Shilton *	www.Stpetersprimary.org
Saint Peters Catholic Primary School - Hinckley *	www.Stpetershinckley.Net
St Winefrides Catholic Voluntary Primary School *	www.Winefrides-Rc.leics.sch.uk
Secondary Schools	Link to website
Ashby School	www.ashbyschool.org.uk
Beauchamp College - Oadby	www.beauchamp.org.uk
Belvoir HS - Bottesford	www.belvoirhigh.leics.sch.uk
Bosworth Academy - Desford	www.bosworthacademy.org.uk
Brockington CC - Enderby	www.brockington.leics.sch.uk
Castle Rock HS - Coalville	www.castlerocksch.uk
Cedars Academy - Birstall	www.thecedarsacademy.org.uk
Charnwood College	www.charnwoodcollege.org
Countesthorpe Leysland CC	www.clcc.college
De Lisle College, Loughborough *	www.delisle.org.uk
Gartree HS - Oadby	www.gartree.leics.sch.uk
Brookvale High School	www.brookvalegroby.com
Hastings High School - Burbage	www.hastings.school
Heath Lane Academy - Earl Shilton	www.heathlane.midlandat.co.uk
Hinckley Academy	www.hinckleyacademy.co.uk
Humphrey Perkins School - Barrow	www.humphreyperkins.org.uk
Ibstock Community College	www.ibstockcollege.co.uk
Ivanhoe College – Ashby	www.ivanhoe.co.uk
Iveshead School, Shepshed	www.ivesheadschoool.org
John Ferneley College - Melton Mowbray	www.johnferneley.org
Kibworth High School	www.kibworth-tmet.uk
Limehurst Academy - Loughborough	www.limehurst.org.uk
Longfield HS - Melton Mowbray	www.longfieldacademy.org.uk
Lutterworth College	www.lutterworthcollege.com
Lutterworth HS	www.lutterworthhigh.co.uk
Manor HS - Oadby	www.manorhigh.leics.sch.uk
Martin HS - Anstey	www.martinhigh.org.uk
Rawlins Academy - Quorn	www.rawlinsacademy.org.uk
Robert Smyth Academy	www.robertsmyth.tgacademy.org.uk

Roundhill Academy - Thurmaston	www.roundhill.bepschools.org
South Charnwood High School	www.southcharnwood.leics.sch.uk
South Wigston High School	www.southwigston.leics.sch.uk
St Martins Catholic Academy, Stoke Golding *	www.saint-martins.net
Thomas Estley CC - Broughton Astley	www.thomasestley.org.uk
Welland Park Academy - Market Harborough	www.wellandparkacademy.co.uk
Wigston Academy	www.wigstonacademy.org
Winstanley School - Braunstone	www.winstanleyschool.org.uk
Woodbrook Vale HS - Loughborough	www.woodbrookvale.leics.sch.uk
Wreake Valley Academy - Syston	www.wreake.bepschools.org

Schools marked with * may need a supplementary form completing, the supplementary form can be obtained directly from the school.

Appendix 3:

ACADEMIES RUNNING THEIR OWN ARRANGEMENTS

Inspiring Primaries Academy Trust – Mid-Term Arrangements 2022		
School	Address	Telephone
All Saints CE Primary School, Sapcote	Bassett Lane, Sapcote, Leics, LE9 4FB	01455 272973
Arnesby Primary School	Mill Hill Road, Arnesby, Leics, LE8 5WG	0116 2478563
Claybrooke Primary School	Main Road, Claybrooke Parva, Leics, LE17 5AF	01455 209238
Dunton Bassett Primary School	The Mount, Dunton Bassett, Leics, LE17 5JL	01455 209557
Gilmorton Chandler CE Primary School	Church Lane, Gilmorton, Leics, LE17 5LU	01455 552343
John Wycliffe Primary School	Moorbarns Lane, Lutterworth, Leics, LE17 4QJ	01455 553135
Redmoor Academy - Hinckley	www.redmooracademy.org	
Sharnford CE Primary School	Henson Way, Sharnford, Leics, LE10 3PN	01455 272456
St Margaret's CE Primary School, Stoke Golding	High Street, Stoke Golding, Warks, CV13 6HE	01455 212393
St Mary's CE Primary School, Bitteswell	The Green, Bitteswell, Leics, LE17 4SB	01455 552818
Swinford CE Primary School	School Lane, Swinford, Leics, LE17 6BG	01788 860404
Ullesthorpe CE Primary School	Ashby Road, Ullesthorpe, Leics, LE17 5DN	01455 209926

ALL SAINTS CE PRIMARY SCHOOL, SAPCOTE

MID TERM (IN-YEAR) ADMISSIONS ARRANGEMENTS 2021/22 ACADEMIC YEAR



If you are thinking of moving your child(ren) to our school, please call us on 01455 272973 or email us at allsaints@ipat.uk to enquire if we have places available in the relevant year group(s). We will offer you a tour of the school with a representative from our leadership team.

Mid term applications for 2021/22 should be made on the form below which should be completed and emailed to allsaints@ipat.uk. You will be notified of the admission decision within 10 school days. If applicable, you will also be notified of the appeal procedure (see Admissions Appeals below).

ARNESBY PRIMARY SCHOOL



MID TERM (IN YEAR) ADMISSIONS ARRANGEMENTS 2021/22 ACADEMIC YEAR

If you are thinking of moving your child(ren) to our school, please call us on 0116 247 8563 or email us at office@arnesby.embracemat.org to enquire if we have places available in the relevant year group(s). We will gladly offer you a tour of the school with a representative from our leadership team.

Mid term applications for 2021/22 should be made on the form below which should be completed and emailed to office@arnesby.embracemat.org. You will be notified of the admission decision within 10 school days. If applicable, you will also be notified of the appeal procedure (see Admissions Appeals below).

CLAYBROOK PRIMARY SCHOOL



MID TERM (IN-YEAR) ADMISSIONS ARRANGEMENTS 2021/22 ACADEMIC YEAR

If you are thinking of moving your child(ren) to our school, please call us on 01455 209238 or email us at office@claybrooke.leics.sch.uk to enquire if we have places available in the relevant year group(s). We will offer you a tour of the school with a representative from our leadership team.

Mid term applications for 2021/22 should be made on the form below which should be completed and emailed to office@claybrooke.leics.sch.uk. You will be notified of the admission decision within 10 school days. If applicable, you will also be notified of the appeal procedure (see Admissions Appeals below).

DUNTON BASSETT PRIMARY SCHOOL



MID TERM (IN-YEAR) ADMISSIONS ARRANGEMENTS 2021/22 ACADEMIC YEAR

If you are thinking of moving your child(ren) to our school, please call us on 01455 209557 or email us at schooloffice@duntonbassett.leics.sch.uk to enquire if we have places available in the relevant year group(s). We will offer you a tour of the school with a representative from our leadership team.

Mid term applications for 2021/22 should be made on the form below which should be completed and emailed to schooloffice@duntonbassett.leics.sch.uk. You will be notified of the admission decision within 10 school days. If applicable, you will also be notified of the appeal procedure (see Admissions Appeals below).

GILMORTON CHANDLER CE PRIMARY SCHOOL



MID TERM (IN-YEAR) ADMISSIONS ARRANGEMENTS 2021/22 ACADEMIC YEAR

If you are thinking of moving your child(ren) to our school, please call us on 01455 552343 or email us at office@gilmortonchandler.leics.sch.uk to enquire if we have places available in the relevant year group(s). We will offer you a tour of the school with a representative from our leadership team.

Mid term applications for 2021/22 should be made on this form which should be completed and emailed to office@gilmortonchandler.leics.sch.uk. You will be notified of the admission

decision within 10 school days. If applicable, you will also be notified of the appeal procedure (see Admissions Appeals below).

JOHN WYCLIFFE CE PRIMARY SCHOOL



MID TERM (IN-YEAR) ADMISSIONS ARRANGEMENTS 2021/22 ACADEM

If you are thinking of moving your child(ren) to our school, please call us on 01455 553135 or email us at schooloffice@jwps.uk to enquire if we have places available in the relevant year group(s). We will offer you a tour of the school with a representative from our leadership team.

Mid term applications for 2021/22 should be made on this form ([Admissions Application Form](#)) which should be completed and emailed to schooloffice@jwps.uk. You will be notified of the admission decision within 10 school days. If applicable, you will also be notified of the appeal procedure (see Admissions Appeals below).

SHARNFORD CE PRIMARY SCHOOL



MID TERM (IN-YEAR) ADMISSIONS ARRANGEMENTS 2021/22 ACADEMIC YEAR

If you are thinking of moving your child(ren) to our school, please call us on 01455 272456 or email us at sharnford@ipat.uk to enquire if we have places available in the relevant year group(s). We will offer you a tour of the school with a representative from our leadership team.

Mid term applications for 2021/22 should be made on the form below which should be completed and emailed to sharnford@ipat.uk. You will be notified of the admission decision within 10 school days. If applicable, you will also be notified of the appeal procedure (see Admissions Appeals below).

ST MARGARETS CE PRIMARY SCHOOL, STOKE GOLDING



MID TERM (IN-YEAR) ADMISSIONS ARRANGEMENTS 2021/22 ACADEMIC YEAR

If you are thinking of moving your child(ren) to our school, please call us on 01455 212393 or email us at office.sm@ipat to enquire if we have places available in the relevant year group(s). We will offer you a tour of the school with a representative from our leadership team.

Mid term applications for 2021/22 should be made on [this form](#) which should be completed and emailed to office.sm@ipat. You will be notified of the admission decision within 10 school days. If applicable, you will also be notified of the appeal procedure (see Admissions Appeals below).

ST. MARY'S C OF E PRIMARY, BITTESWELL

MID TERM (IN-YEAR) ADMISSIONS ARRANGEMENTS 2021/22 ACADEMIC YEAR



If you are thinking of moving your child(ren) to our school, please call us on 01455 552818 or email us at office@stmarysbitteswell.co.uk to enquire if we have places available in the relevant year group(s). We will offer you a tour of the school with a representative from our leadership team.

Mid term applications for 2021/22 should be made on this form below which should be completed and emailed to office@stmarysbitteswell.co.uk. You will be notified of the admission decision within 10 school days. If applicable, you will also be notified of the appeal procedure (see Admissions Appeals below).

[Admission application form for IPAT schools](#)

SWINFORD COFE PRIMARY SCHOOL

MID TERM (IN-YEAR) ADMISSIONS ARRANGEMENTS 2021/22 ACADEMIC YEAR



If you are thinking of moving your child(ren) to our school, please call us on 01788 860404 or email us at admin@swinford.embracemat.org to enquire if we have places available in the relevant classes or year group(s). We will offer you a tour of the school with a member of our team.

Mid term applications for 2021/22 should be made on our Governors Admissions Form (available from within the admissions section of our website). This form should be completed and delivered to our school office or scanned and emailed to admin@swinford.embracemat.org. You will be notified of the admission decision within 10 school days. If applicable, you will also be notified of the appeals procedure as outlined within our admissions policy

ULLESTHORPE CE PRIMARY SCHOOL

MID TERM (IN-YEAR) ADMISSIONS ARRANGEMENTS 2021/22 ACADEMIC YEAR



If you are thinking of moving your child(ren) to our school, please call us on 01455 209926 or email us at ullesthorpe@ipat.uk to enquire if we have places available in the relevant year group(s). We will offer you a tour of the school with a representative from our leadership team.

Mid term applications for 2021/22 should be made on the form below which should be completed and emailed to ullesthorpe@ipat.uk. You will be notified of the admission decision within 10 school days. If applicable, you will also be notified of the appeal procedure (see Admissions Appeals below).

[Admission application form for IPAT schools](#)

THURMASTON CHURCH HILL JUNIOR SCHOOL



Applications during the School Year If you would like to move your child to our school, please contact the school office to arrange a tour and to meet the Headteacher. Mid term applications for 2021/22 should be made using the form on the website. You will be notified of the decision within 10 school days. If applicable, you will also be notified of the appeal procedure.

[Admission form for Thurmaston Church Hill Junior School](#)

Application Form for the above academies only in the **Inspiring Primaries Academy Trust** - once completed please forward to relevant school:



APPLICATION TO THE LOCAL GOVERNING BODY FOR ADMISSION TO:

NAME OF SCHOOL:

It is important that this form is completed accurately and full details given. The form is made available to the Independent Appeal Panel in the case of an appeal against non-admission. In all other respects, the information is treated in confidence. If you require assistance in the completion of the form, please contact our school office.

CHILD'S DETAILS:

SURNAME	
FORENAMES	
HOME ADDRESS (INCLUDE POSTCODE)	
DATE OF BIRTH	

PARENT/GUARDIAN/CARER DETAILS:

	PARENT/GUARDIAN/CARER	PARENT/GUARDIAN/CARER
TITLE		
SURNAME		
FORENAME		
TELEPHONE NUMBER		

I/we wish my/our child to be admitted to the school and confirm that the information given is correct. Our application for admission is under criterion number ___ of the school's Admission Policy (please see school website for details).

I/we understand the need to provide proof of address and of the child's date of birth.

Signed / dated by a person(s) with legal responsibility for the child.

Office use only: **Proof of address seen (sign and date)**
Evidence of date of birth seen (sign and date)



The Market Bosworth School

An Outstanding Leicestershire Academy

Joining the school in all other years or during Year 7

The Market Bosworth School manages its own “in year” admissions. “In year” admissions for The Market Bosworth School is any admission that would take place after the normal admission round for Year 7 Students.

If you would like a copy of an “In year” application form for TMBS, they are available from the schools main office, or electronically via email on: admissions@tmbs.org.uk

The school will aim to notify parents of the outcome of their application in writing within 10 school days, but will notify in writing within 15 school days.

In the event the application is unsuccessful, there is the right to appeal. An appeal form will be provided, where you set out your grounds for appeal, and the appeal will be heard within 30 school days of receipt of the appeal.

Should you wish to speak with us about the application / appeals process, or the current availability of places in a particular year group, please contact:

Mr Slattery, Assistant Principal

Email admissions@tmbs.org.uk

Telephone (Main Reception) 01455 290251

All admissions for The Market Bosworth School are considered in line with the [DFE School Admissions code](#) (PDF).



5. Admissions Arrangements

Joining the school at the beginning of Year 7

If you are currently in Year 6 and would like to join our school, please make your application before 31st October. Applications must be made through the Local Authority in which you live. For Redmoor Academy, this is usually Leicestershire County Council:

[Leicestershire County Council](#)

We traditionally hold open events for prospective Year 7 students and their parents in September and October;

- If you are in Year 6 and would like a tour of the school during the day, please contact Mrs Davey to arrange an appointment: office@redmooracademy.org
- Our Open Evening is on **Wednesday 27th September 2023**. Please see our website for further information.

Joining the school in all other years or during Year 7

Redmoor Academy manages its own “in year” admissions. “In year” (or Mid-Term) admissions for Redmoor Academy is any admission that would take place after the start of the academic year in the Autumn to join the school during that same academic year.

Please note: a waiting list only exists for entry into Year 7 until the end of the Autumn Term in that academic year. Please see our admissions policy for full details.

To apply for a place at Redmoor Academy, please complete our “in year” application form;

[In Year Application Form](#)

Should you wish to speak with us about the application process, appeals or the current availability of places in a particular year group, please contact:

Mrs Davey (Principal's PA); ldavey@redmooracademy.org

The school will aim to notify parents of the outcome of their application within 10 school days, but will notify in writing within 15 school days.

In the event the application is unsuccessful, there is the right to appeal. An appeal form will be provided if required, where you set out your grounds for appeal, and the appeal will be heard within 30 school days of receipt of the appeal form.

All admissions for Redmoor Academy are considered in line with the DfE School Admissions code which can be found at:

[DfE School Admissions Code](#)

Statutory Information

Redmoor Academy Admissions Policy 2023- 2024

Redmoor Academy Admissions Policy 2024- 2025

Redmoor Academy Catchment Map

[Timetable for Appeals](#)

ACADEMIES YET TO CONFIRM THEIR ARRANGEMENTS

Brockington CC - Enderby	www.brockington.leics.sch.uk
Castle Donington College	www.cdcollege.uk
Hastings High School - Burbage	www.hastings.school
Queniborough Primary School	https://quenischool.org.uk/