

## **CO-ORDINATED ADMISSION ARRANGEMENTS FOR MID-TERM TRANSFERS 2024-25 ACADEMIC YEAR**

### **FOR:**

- List of Local Authority (LA) Controlled Community Schools see Appendix 1
- List of Own Admitting Authorities - Academies Participating in the LA's Coordinated arrangements see Appendix 2
- List of Own Admitting Authorities - Academies that conduct their own Coordinated arrangements see Appendix 3

*[Ratified February 2023]*

*Gurjit Singh Bahra*

*School Admissions and Pupil Services.*

### **Contents**

1.	Definition .....	2
2.	Introduction .....	2
3.	Administration of the LA's Mid-Term Arrangements .....	3
	4. 'Mid-Term Arrangements Timetable (for participating Schools) .....	5
Appendix 1: LIST OF MAINTAINED / COMMUNITY SCHOOLS FOLLOWING THIS MID-TERM CO-ORDINATED SCHEME .....		
		8
Appendix 2: LIST OF ACADEMIES PARTICIPATING IN THE LA'S MID-TERM CO-ORDINATED SCHEME .....		
		10
Appendix 3: ACADEMIES RUNNING THEIR OWN ARRANGEMENTS .....		
	ACADEMIES YET TO CONFIRM THEIR ARRANGEMENTS .....	20

### **1. Definition**

- For all maintained schools and for those academies that are participate in the Local Authority's (LA) co-ordinated mid-term arrangements (see appendix 1 and 2). Leicestershire's School Admissions Service will process mid-term transfers from the Autumn Term 2021 as explained in this document.
- For schools and academies in appendix 1 and 2, you can either apply on paper using the Local Authority's paper common application see page 6 or you can

request a form by calling 0116 305 6684 (if you cannot print the form), or online at [Apply to move school](#).

## **2. Introduction**

- 2.1. From September 2021 the School Admissions Code 2021 requires all LAs to host all schools' Mid-Term (In-Year) Arrangements (but not special schools) within its area. The purpose of this document is to establish mechanisms for ensuring, as far as reasonably practical, that every parent of a child living within the LA understands how to apply for a school that they wish their child to attend.
- 2.2. The duty to comply with parental preference is not affected by the co-ordinated Mid-Term admission arrangements, except where more than one school place could be offered. Nor do these arrangements affect the rights and duties of governing bodies of own admitting authorities (OAA) i.e. academies, that are participating in LA's arrangements as detail at appendix 2. Academies not participating in the LA's arrangements and instead have their own set of arrangements are listed at appendix 3. For these academies they will set and apply their own Mid-Term admission arrangements.
- 2.3. Where an application arrives via the LA for an OAA that does not participate in the LA's co-ordinated scheme the LA will forward the application the OAA to swiftly process. For maintained and OAAs participating in the LA's arrangement it will be the LA that will process the application form.

Main obligations imposed by the regulations. School Admissions Code (September) 2021.

- 2.4. The common application form must allow parents to express a preference for at least 3 School, which may be for schools within or beyond their home local authority area, and the reasons for their preferences. The best way to apply for school list in appendixes 1 and 2, is through the LA's [online application form](#).
- 2.5. Local authorities and admission authorities in the area must exchange information on the availability of vacancies in order to process applications quickly and to make decisions within dates specified in these arrangements.
- 2.6. Offers of places will be made swiftly by the LA for schools and academies participating in these arrangements. Schools and academies participating in the LA's arrangements must not contact parents about the outcome of their application until after an offer has been made by the local authority.
- 2.7. Parents who cannot be offered one of their preferred schools must, if there are places available, be informed of where places exist at other school(s).
- 2.8. While there is no requirement to co-ordinate fully across borders, it is good practice for local authorities to eliminate multiple offers of places across borders and many local authorities already co-ordinate in this way. Regulations provide that where a place can potentially be offered at schools in two or more local authority areas, and the local authorities concerned agree, only one offer of a place is

made. Where they do so, schemes must specify which local authority will make the offer of a single place. However, it is still possible that some parents who have applied for schools within their own local authority and elsewhere may receive an offer from each local authority.

2.9. The arrangements must continue to ensure that places which become available are reallocated effectively.

### **3. Administration of the LA's Mid-Term Arrangements**

NB<sup>1</sup> For all dates mentioned below, if the date is not a working/school day (depending on school holidays), then close of business is on the next working day applies.

3.1. Leicestershire's common mid-term co-ordinated admission application form invites those parents, resident in Leicestershire wishing to transfer part way through an academic year to name up to three preferred school(s) listed in appendix 1 and 2 only. The preferences parents make must name the school(s) in ranked order. Although parents rank their preferences, all preferences will be treated as equal by the LA when applying criteria. Ranking only applies when more than one school can be allocated as a means to decide which school should be offered, i.e. the parents highest ranking school will be offered.

3.2. Leicestershire residents who wish to apply for a school within the area of another local authority should apply direct to that LA using their processes. NonLeicestershire residents who wish to apply for a place in Leicestershire should apply direct to Leicestershire if listed in appendix 1 and 2, or follow the processes detailed in all other appendixes concerning applying to schools who intend to run their own arrangements.

3.3. Applications for VA, Academy, Studio, or Trust School that have their own arrangements in Leicestershire will be kept informed of applications and decisions. Any additional information (if required) will be requested directly by the LA. In addition, all academies are required (para 2.22) of the 2021 Code to communicate the availability of places to the LA (or parent if not participating in these arrangements) when requested (within 2 school days of the request). Once the admitting authority has made their decision, they will disclose their decision to the applicant and LA.

3.4. Leicestershire LA applies its own admissions criteria to requests for places to Leicestershire community, voluntary controlled schools and applies the individual academy's criteria if they participate in these arrangements.

3.5. Where a child qualifies for more than one offer of a place, the highest-ranking school expressed will be offered. If the application unsuccessful the parent will be informed of their right to appeal and to contact the LA about other schools that may have availability.

3.6. If Leicestershire is made aware that another LA will be making an offer of a place in a school which is higher up the parent's order of ranking than the school to

be offered by Leicestershire LA, then Leicestershire LA will not make an offer for a place in a Leicestershire school.

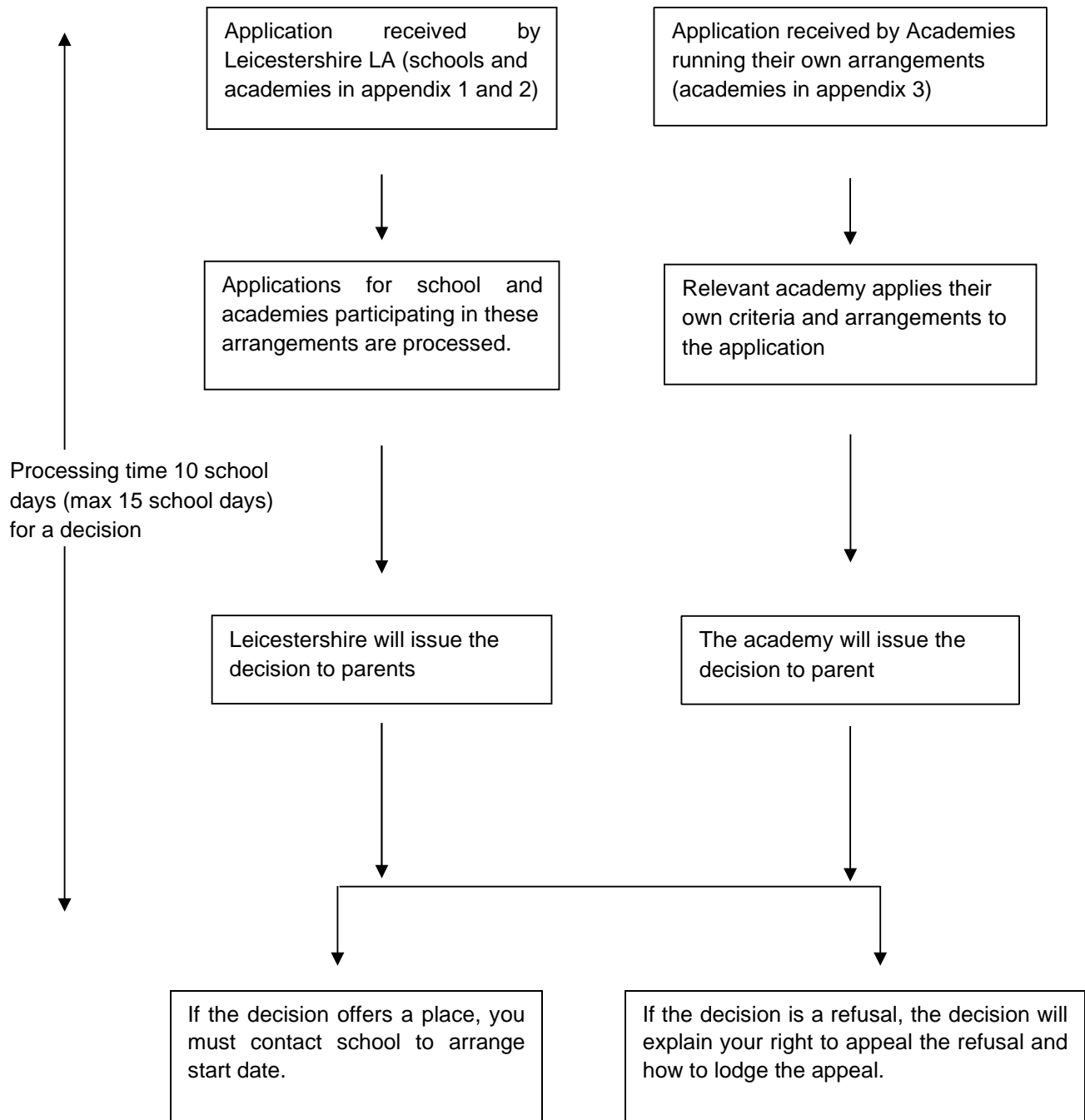
3.7. If any Leicestershire child looks like remaining unplaced, Leicestershire considers how to place them in school within its area, having regard to any reasons expressed by the parent for their unsuccessful preferences.

3.8. For Year-7 applications received after 1 September 2022 and beyond (in the year of entry) these will be considered as mid-term applications. For schools where Leicestershire is the admitting authority and for those OAA academies participating in these arrangements it will maintain an oversubscription waiting list (OSL) for a minimum of the Autumn Term in the academic year of admission (until 31 December of each school in the year of admission), ranked in the same order as the published oversubscription criteria.

#### **4. 'Mid-Term Arrangements Timetable (for participating Schools)**

Notable timeframes identified below:

- Leicestershire will process all applications within 15 working or school days (depending on school holidays) from the date the application has been received by the LA for all schools participating in these arrangements.
- Leicestershire will offer places where possible on a daily basis by 4 pm, where this is not possible it will move to the next available offer date.
- Wherever possible Leicestershire will process an application within 15 working/school days (subject to Fair Access protocol).



OFFICE USE ONLY  
Date Received:

**COMMON ADMISSION APPLICATION  
FORM FOR IN YEAR ADMISSIONS**  
(Including applications to Voluntary Aided,  
Foundation, Trust, Academy and Free Schools)



Leicestershire residents only

**It is very important that:**

- You read all guidance notes and visit [www.leicestershire.gov.uk/admissions](http://www.leicestershire.gov.uk/admissions) for further information or contact School Admissions on Tel 0116 305 2070
- You complete all sections – failure to do so may delay the processing of this form
- The person completing this form has legal responsibility for the child

**Section 1 - PUPIL DETAILS** (please make sure ALL details are correct and amend if not)

First Name:  Surname:

Male  Female  Date of Birth:  Tel No:

Address:  Mobile No:

Postcode:  Email Address:

Current School:

Preferred Start Date:

Parent/Guardian details:

Mr/Mrs/Ms/Miss/Other:  Print Name:

Is the pupil looked after or previously looked after by a Local Authority?   
Please name the Authority:

**Section 2 - SCHOOL PREFERENCES** (You must complete this section)

Our aim is to meet your first preference however there is no guarantee of a place even at your catchment area school. Therefore give consideration to making up to three school preferences, and to putting your catchment area school as one of your preferences. It is not necessary to name three schools unless you wish to do so.

1) First preference:

Reasons i.e. catchment school, siblings, serious medical, exceptional social/domestic needs (professional documentation required), attach separate sheet if needed.

2) Second preference:

Reasons i.e. catchment school, siblings, serious medical, exceptional social/domestic needs (professional documentation required), attach separate sheet if needed.

3) Third preference:

Reasons i.e. catchment school, siblings, serious medical, exceptional social/domestic needs (professional documentation required), attach separate sheet if needed.

**You can apply on-line at [www.leicestershire.gov.uk/admissions](http://www.leicestershire.gov.uk/admissions)**



**Section 3 - Additional Child/Family Information** (completing this section may help us to give a higher priority to your case.)

Does the child have a Statement or Education Health and Care Plan? Yes  No

If your child has mobility issues or is a wheelchair user and you wish to speak to an Admissions Officer about Partially Accessible or Pathway schools please contact Tel: 0116 305 2070.

Your relationship to the child:

Parent:  Carer:   
Mother  Guardian   
Father  Foster Carer   
Step-parent  Social Worker

If Social Worker or Lead Professional:  
(please give full contact details):

Does your child have a brother / sister already attending any of your preferred school(s) (Section 2)

YES  NO  If 'YES' please give full details below:

Name of Brother/Sister: Date of Birth: Year Group: Name of school they are attending:

1

Home Address if different to Section 1


Is the child new to Leicestershire? Yes  No  if yes, where from?

Please state your child's English language ability: Fluent  Intermediate  Beginner

What is your child's first language?

**Section 4 - DECLARATION**

I declare all the information I have provided is true. I also understand that any allegation of false or fraudulent information to gain a school place will result in the Council taking reasonable steps to ascertain the accuracy of the information. If the information is found to be false it may result in my child losing their place.

 Data Protection Act 1998. The information you supply will be held in a computer database which will be used by Leicestershire Local Authority and the other admissions authorities to which you are applying for a school place. The information will be used for the sole purpose of fulfilling the Local Authority's statutory and operational needs in the area of school allocations and associated matters.

Signature of Parent/Guardian:  Date:

- What to do next:**
- Check all completed sections and keep a copy of this form
  - If you need any help, contact School Admissions. Tel: 0116 305 2070 from 8.30am to 5.00pm (4.30pm on Fridays).

• **RETURN** this form to: **SCHOOL ADMISSIONS  
LEICESTERSHIRE COUNTY COUNCIL,  
COUNTY HALL, GLENFIELD,  
LEICESTER LE3 8RF**

Or apply online @ [www.leicestershire.gov.uk/admissions](http://www.leicestershire.gov.uk/admissions)

Please refer to the Leicestershire County Council website or School Admissions for confirmation of the closing date. Applications received after the closing date will be treated as late.

**Appendix 1:  
LIST OF MAINTAINED / COMMUNITY SCHOOLS FOLLOWING THIS**

## MID-TERM CO-ORDINATED SCHEME

PRIMARY SCHOOLS	Website Contact
Anstey The Latimer School	<a href="http://www.latimerprimary.co.uk">www.latimerprimary.co.uk</a>
Appleby Magna CofE Primary School	<a href="http://www.sirjohnmoore.co.uk">www.sirjohnmoore.co.uk</a>
Ashby-De-La-Zouch CofE Primary School	<a href="http://www.ashbyce.leics.sch.uk">www.ashbyce.leics.sch.uk</a>
Ashby-De-La-Zouch Woodcote Primary School	<a href="http://www.woodcoteprimary.com/">www.woodcoteprimary.com/</a>
Barwell Infant School	<a href="http://www.barwellinfantschool.co.uk">www.barwellinfantschool.co.uk</a>
Barwell Newlands Primary School	<a href="http://www.newlands.leics.sch.uk">www.newlands.leics.sch.uk</a>
Belton CofEngland Primary School	<a href="http://www.belton.leics.sch.uk">www.belton.leics.sch.uk</a>
Billesdon Parochial Primary School	<a href="http://www.billesdon.leics.sch.uk">www.billesdon.leics.sch.uk</a>
Blaby Thistly Meadow Primary School	<a href="http://www.thistlymeadow.net">www.thistlymeadow.net</a>
Braunstone Ravenhurst Primary School	<a href="http://www.ravenhurst.leics.sch.uk">www.ravenhurst.leics.sch.uk</a>
Breedon St Hardulphs CofE Primary. School	<a href="http://www.st-hardulphs.leics.sch.uk">www.st-hardulphs.leics.sch.uk</a>
Broughton Astley Orchard CofE Primary School	<a href="http://www.orchardcofe.leics.sch.uk">www.orchardcofe.leics.sch.uk</a>
Buckminster Primary School	<a href="http://www.buckminster.leics.sch.uk">www.buckminster.leics.sch.uk</a>
Burbage Church Of England Infant School	<a href="http://www.burbageinfants.org">www.burbageinfants.org</a>
Burbage Junior School	<a href="http://www.burbage-jun.leics.sch.uk">www.burbage-jun.leics.sch.uk</a>
Burbage Sketchley Hill Primary School	<a href="http://www.sketchleyhill.leics.sch.uk">www.sketchleyhill.leics.sch.uk</a>
Burton-On-The-Wolds Primary School	<a href="http://www.burton-on-the-wolds-school.org">www.burton-on-the-wolds-school.org</a>
Castle Donington Orchard Primary School	<a href="http://www.orchardprimary.org">www.orchardprimary.org</a>
Castle Donington St Edwards CofE Primary	<a href="http://www.stedwards-cd.leics.sch.uk">www.stedwards-cd.leics.sch.uk</a>
Coalville All Saints CofE Primary School	<a href="http://www.allsaints-coalville.leics.sch.uk">www.allsaints-coalville.leics.sch.uk</a>
Coalville Belvoirdale Primary School	<a href="http://www.belvoirdale.org">www.belvoirdale.org</a>
Coalville Warren Hills Primary School	<a href="http://www.warrenhills.leics.sch.uk">www.warrenhills.leics.sch.uk</a>
Congerstone Primary School	<a href="http://www.congerstone.leics.sch.uk">www.congerstone.leics.sch.uk</a>
Cossington CofE Primary School	<a href="http://www.cossingtonschool.org">www.cossingtonschool.org</a>
Countesthorpe Greenfield Primary School	<a href="http://greenfieldprimary.net">greenfieldprimary.net</a>
Desford Com Primary School	<a href="http://www.desford.leics.sch.uk">www.desford.leics.sch.uk</a>
Diseworth CofE Primary School	<a href="http://www.diseworthprimary.co.uk">www.diseworthprimary.co.uk</a>
Donisthorpe Primary School	<a href="http://www.donisthorpeprimary.org">www.donisthorpeprimary.org</a>
Ellistown Com Primary School	<a href="http://www.ellistown.leics.sch.uk">www.ellistown.leics.sch.uk</a>
Fleckney CofE Primary School	<a href="http://www.fleckney.leics.sch.uk">www.fleckney.leics.sch.uk</a>
Foxton Primary School	<a href="http://www.foxton.leics.sch.uk">www.foxton.leics.sch.uk</a>
Glenfield The Hall School	<a href="http://www.thehallprimary.com/">www.thehallprimary.com/</a>
Great Glen St Cuthberts CofE Primary School	<a href="http://www.stcuthberts.leics.sch.uk">www.stcuthberts.leics.sch.uk</a>
Griffydham Primary School	<a href="http://www.griffydham.leics.sch.uk">www.griffydham.leics.sch.uk</a>
Groby Elizabeth Woodville Primary School	<a href="http://www.elizabethwoodvilleprimaryschool.co.uk">www.elizabethwoodvilleprimaryschool.co.uk</a>
Groby Martinshaw Primary School	<a href="http://www.martinshaw.leics.sch.uk">www.martinshaw.leics.sch.uk</a>
Hallaton CofE Primary School	<a href="http://www.hallatonprimary.co.uk">www.hallatonprimary.co.uk</a>
Harby CofE Primary School	<a href="http://www.harbyprimary.org">www.harbyprimary.org</a>
Hathern CofE Primary School	<a href="http://www.hathernprimary.org">www.hathernprimary.org</a>
Heather Primary School	<a href="http://www.heather.leics.sch.uk">www.heather.leics.sch.uk</a>
Hemington Primary School	<a href="http://www.hemington.leics.sch.uk">www.hemington.leics.sch.uk</a>
Hinckley St. Mary's CofE Primary School	<a href="http://www.stmarys.leics.sch.uk">www.stmarys.leics.sch.uk</a>
Hinckley Westfield Infant School	<a href="http://www.westfield-inf.leics.sch.uk">www.westfield-inf.leics.sch.uk</a>
Hinckley Westfield Junior School	<a href="http://www.westfield-jun.leics.sch.uk">www.westfield-jun.leics.sch.uk</a>



Hose CofE Primary School	<a href="http://www.hoseprimaryschool.co.uk">www.hoseprimaryschool.co.uk</a>
<b>PRIMARY SCHOOLS</b>	<b>Website Contact</b>
Hugglescote Com Primary School	<a href="http://www.hugglescote.leics.sch.uk">www.hugglescote.leics.sch.uk</a>
Ibstock Junior School	<a href="http://www.ibstockjuniorschool.co.uk">www.ibstockjuniorschool.co.uk</a>
Ibstock St Denys CofE Infant School	<a href="http://www.stdenysschool.com/">www.stdenysschool.com/</a>
Kegworth Primary School	<a href="http://www.kegworthprimary.org">www.kegworthprimary.org</a>
Kilby St Marys CofE Primary School	<a href="http://www.kilby.leics.sch.uk">www.kilby.leics.sch.uk</a>
Little Bowden School	<a href="http://www.littlebowden.leics.sch.uk">www.littlebowden.leics.sch.uk</a>
Long Clawson CofE Primary School	<a href="http://www.longclawson.leics.sch.uk">www.longclawson.leics.sch.uk</a>
Long Whatton CofE Primary School	<a href="http://www.longwhattonschool.org">www.longwhattonschool.org</a>
Loughborough Booth Wood Primary School	<a href="http://www.boothwood.leics.sch.uk">www.boothwood.leics.sch.uk</a>
Loughborough Thorpe Acre Infant School	<a href="http://www.tais.leics.sch.uk">www.tais.leics.sch.uk</a>
Loughborough Thorpe Acre Junior School	<a href="http://www.thorpeacrejuniorschool.co.uk">www.thorpeacrejuniorschool.co.uk</a>
Moira Primary School	<a href="http://www.moira.leics.sch.uk">www.moira.leics.sch.uk</a>
Nailstone Dove Bank Primary School	<a href="http://www.dovebankprimary.co.uk">www.dovebankprimary.co.uk</a>
New Swannington Primary School	<a href="http://www.newswanningtonprimary.org.uk">www.newswanningtonprimary.org.uk</a>
Newbold CofE Primary School	<a href="http://www.newbold-cecp.leics.sch.uk">www.newbold-cecp.leics.sch.uk</a>
Newbold Verdon Primary School	<a href="http://www.newboldverdonprimaryschool.co.uk">www.newboldverdonprimaryschool.co.uk</a>
Newton Burgoland Primary School	<a href="http://www.newburland.leics.sch.uk">www.newburland.leics.sch.uk</a>
Packington CofE Primary School	<a href="http://www.packington.leics.sch.uk">www.packington.leics.sch.uk</a>
Quorn St Bartholomews CofE Primary School	<a href="http://www.st-bartholomews.leics.sch.uk">www.st-bartholomews.leics.sch.uk</a>
Scalford CofE Primary School	<a href="http://www.scalford.leics.sch.uk">www.scalford.leics.sch.uk</a>
Sheepy Magna CofE Primary School	<a href="http://www.sheepymagna.leics.sch.uk">www.sheepymagna.leics.sch.uk</a>
Shepshed Oxley Primary School	<a href="http://www.oxley-shepshed.leics.sch.uk">www.oxley-shepshed.leics.sch.uk</a>
Shepshed St. Botolphs CofE Primary School	<a href="http://www.st-botolphs.leics.sch.uk">www.st-botolphs.leics.sch.uk</a>
Snarestone CofE Primary School	<a href="http://www.snarestoneprimary.org">www.snarestoneprimary.org</a>
Stathern Primary School	<a href="http://www.stathern.leics.sch.uk">www.stathern.leics.sch.uk</a>
Swithland St Leonards CofE Primary School	<a href="http://www.st-leonards.leics.sch.uk">www.st-leonards.leics.sch.uk</a>
Thurlaston CofE Primary School	<a href="http://www.thurlaston.leics.sch.uk">www.thurlaston.leics.sch.uk</a>
Thurmaston Bishop Ellis Catholic Primary School	<a href="http://www.bishopellis.leics.sch.uk">www.bishopellis.leics.sch.uk</a>
Whetstone Badgerbrook Primary School	<a href="http://www.badgerbrook.org.uk">www.badgerbrook.org.uk</a>
Whitwick St John The Baptist CofE Primary	<a href="http://www.whitwickce.leics.sch.uk">www.whitwickce.leics.sch.uk</a>
Wigston Thythorn Field Com. Primary School	<a href="http://www.thythornfield.co.uk">www.thythornfield.co.uk</a>
Wigston Water Leys Primary School	<a href="http://www.waterleysprimaryschool.co.uk">www.waterleysprimaryschool.co.uk</a>
Witherley CofE Primary School	<a href="http://www.witherley.leics.sch.uk">www.witherley.leics.sch.uk</a>
Woodhouse Eaves St Pauls CofE Primary School	<a href="http://www.st-pauls.leics.sch.uk">www.st-pauls.leics.sch.uk</a>
Woodstone Com Primary School	<a href="http://www.woodstoneprimary.co.ukweb">www.woodstoneprimary.co.ukweb</a>
Worthington School	<a href="http://www.worthington.leics.sch.uk">www.worthington.leics.sch.uk</a>
Wymeswold CofE Primary School	<a href="http://www.wymeswold.leics.sch.uk">www.wymeswold.leics.sch.uk</a>

## **Appendix 2: LIST OF ACADEMIES PARTICIPATING IN THE LA'S MID-TERM CO-ORDINATED SCHEME**

<b>Primary Schools</b>	<b>Link To Website</b>
Ab Kettleby Primary School	<a href="http://www.abkettleby.org">www.abkettleby.org</a>
Albert Village Primary School	<a href="http://www.albertvillage.leics.sch.uk">www.albertvillage.leics.sch.uk</a>

All Saint, Wigston	<a href="http://www.Allsaintscofe.leics.sch.uk">www.Allsaintscofe.leics.sch.uk</a>
Asfordby Captains Close Primary School	<a href="http://www.captains-close.leics.sch.uk">www.captains-close.leics.sch.uk</a>
Asfordby Hill Primary School	<a href="http://www.Asfordbyhill.leics.sch.uk">www.Asfordbyhill.leics.sch.uk</a>
Ashby Hastings Primary School	<a href="http://www.ashbyhastingsprimary.co.uk">www.ashbyhastingsprimary.co.uk</a>
Ashby Hill Top Primary School	<a href="http://www.Ashbyhilltop.leics.sch.uk">www.Ashbyhilltop.leics.sch.uk</a>
Barlestone CofE Primary School	<a href="http://www.barlestoneprimaryschool.uk">www.barlestoneprimaryschool.uk</a>
Barwell C Of E Academy	<a href="http://www.Barwellceacademy.co.uk">www.Barwellceacademy.co.uk</a>
Battling Brook Primary School - Hinckley	<a href="http://www.Bbrook.leics.sch.uk">www.Bbrook.leics.sch.uk</a>
Beacon Primary School - Loughborough	<a href="http://sites.google.com/a/etinet.org/beacon-academy">sites.google.com/a/etinet.org/beacon-academy</a>
Blaby Stokes Primary School	<a href="http://www.Blabystokes.co.uk">www.Blabystokes.co.uk</a>
Bottesford Primary School	<a href="http://www.bottesfordprimary.co.uk">www.bottesfordprimary.co.uk</a>
Bringhurst Primary School	<a href="http://www.Bringhurstprimary.co.uk">www.Bringhurstprimary.co.uk</a>
Brocks Hill Primary School - Oadby	<a href="http://www.Brockshill.org.uk">www.Brockshill.org.uk</a>
Brookside Primary School, Oadby	<a href="http://www.Brookside.leics.sch.uk">www.Brookside.leics.sch.uk</a>
Broomfield Primary School - East Goscote	<a href="http://www.broomfield.bepschools.org">www.broomfield.bepschools.org</a>
Broom Leys Primary School - Coalville	<a href="http://www.Broom-Leys.leics.sch.uk">www.Broom-Leys.leics.sch.uk</a>
Brownlow Primary School - Melton Mowbray	<a href="http://www.Brownlowprimary.org">www.Brownlowprimary.org</a>
Castle Donington Foxbridge Primary School	<a href="http://www.facebook.com/Foxbridgeprimaryschool">www.facebook.com/Foxbridgeprimaryschool</a>
Christchurch St Peters CofE Primary School	<a href="http://www.mountsorrels.school.org.uk">www.mountsorrels.school.org.uk</a>
Church Hill Infant Sch - Thurmaston	<a href="http://www.churchhillinfants.bepschools.org">www.churchhillinfants.bepschools.org</a>
Church Langton CofE Primary School	<a href="http://www.Churchlangton.leics.sch.uk">www.Churchlangton.leics.sch.uk</a>
Cobden Primary School - Loughborough	<a href="http://www.Cobden.leics.sch.uk">www.Cobden.leics.sch.uk</a>
Cosby Primary School	<a href="http://www.Cosby.School">www.Cosby.School</a>
Croft Primary School	<a href="http://www.croftprimaryschool.co.uk">www.croftprimaryschool.co.uk</a>
Danemill Primary School - Enderby	<a href="http://www.Danemill.com">www.Danemill.com</a>
Eastfield Primary School - Thurmaston	<a href="http://www.eastfield.bepschools.org">www.eastfield.bepschools.org</a>
Fairfield Primary School - Wigston	<a href="http://www.fairfieldcpschool.co.uk">www.fairfieldcpschool.co.uk</a>
Farndon Fields Primary School - Market Harborough	<a href="http://www.Farndonfields.org">www.Farndonfields.org</a>
Fernvale Primary School - Thurnby	<a href="http://www.fernvale.leics.sch.uk">www.fernvale.leics.sch.uk</a>
Fossebrook Primary School – Braunstone	<a href="http://www.fossebrook.org.uk">www.fossebrook.org.uk</a>
Frisby Primary School	<a href="http://www.Frisby.leics.sch.uk">www.Frisby.leics.sch.uk</a>
Gaddesby Primary School	<a href="http://www.gaddesby.bepschools.org">www.gaddesby.bepschools.org</a>
Glen Hills Primary School - Glen Parva	<a href="http://www.Glenhillsprimary.co.uk">www.Glenhillsprimary.co.uk</a>
Glenfield Primary School	<a href="http://www.glenfield.leics.sch.uk">www.glenfield.leics.sch.uk</a>
Glenmere Primary School - Wigston	<a href="http://www.Glenmere.leics.sch.uk">www.Glenmere.leics.sch.uk</a>
Great Bowden Primary School	<a href="http://www.Greatbowden.leics.sch.uk">www.Greatbowden.leics.sch.uk</a>
Great Dalby Primary School	<a href="http://www.greatdalby.bepschools.org">www.greatdalby.bepschools.org</a>
Greystoke Primary School - Narborough	<a href="http://greystoke.leics.sch.uk">greystoke.leics.sch.uk</a>
Grove Primary School - Melton Mowbray	<a href="http://www.Groveprimaryschool.org">www.Groveprimaryschool.org</a>
Hall Orchard Ce Primary School - Barrow	<a href="http://www.Hall-Orchard.leics.sch.uk">www.Hall-Orchard.leics.sch.uk</a>
Hallam Fields Primary School - Birstall	<a href="http://www.Hallamfields.org.uk">www.Hallamfields.org.uk</a>
Hallbrook Primary School - Broughton Astley	<a href="http://www.Hallbrook.leics.sch.uk">www.Hallbrook.leics.sch.uk</a>
Higham on the Hill C Of E Primary	<a href="http://www.Higham-On-The-Hill.leics.sch.uk">www.Higham-On-The-Hill.leics.sch.uk</a>
Highcliffe Primary School - Birstall	<a href="http://www.Highcliffeacademy.org.uk">www.Highcliffeacademy.org.uk</a>

<b>Primary Schools</b>	<b>Link To Website</b>
------------------------	------------------------

Highgate Primary School, Sileby	<a href="http://www.highgate.bepschools.org">www.highgate.bepschools.org</a>
Hinckley Parks Primary School	<a href="http://www.Hinckleyparksprimaryschool.uk">www.Hinckleyparksprimaryschool.uk</a>
Holywell Primary School - Loughborough	<a href="http://www.Holywell.leics.sch.uk">www.Holywell.leics.sch.uk</a>
Houghton on the Hill	<a href="http://www.Houghton.leics.sch.uk">www.Houghton.leics.sch.uk</a>
Huncote Primary School	<a href="http://www.Huncoteprimary.org">www.Huncoteprimary.org</a>
Husbands Bosworth Primary School	<a href="http://www.Husbandsbosworth.leics.sch.uk">www.Husbandsbosworth.leics.sch.uk</a>
Kibworth C Of E Primary School	<a href="http://kibworthprimary.org.uk">kibworthprimary.org.uk</a>
Kingsway Primary School	<a href="http://www.Kingsway.org.uk">www.Kingsway.org.uk</a>
Kirby Muxloe Primary School	<a href="http://www.Kmprimary.leics.sch.uk">www.Kmprimary.leics.sch.uk</a>
Lady Jane Grey Primary School - Groby	<a href="http://www.Ladyjanegreyprimary.org.uk">www.Ladyjanegreyprimary.org.uk</a>
Langmoor Primary School - Oadby	<a href="http://www.Langmoor.leics.sch.uk">www.Langmoor.leics.sch.uk</a>
Launde Primary School - Oadby	<a href="http://www.Launde.leics.sch.uk">www.Launde.leics.sch.uk</a>
Little Hill Primary School - Wigston	<a href="http://www.Littlehill.leics.sch.uk">www.Littlehill.leics.sch.uk</a>
Loughborough C Of E Primary School	<a href="http://www.Loughborough-Primary.co.uk">www.Loughborough-Primary.co.uk</a>
Lubenham Primary Primary School	<a href="http://www.Lubenham.leics.sch.uk">www.Lubenham.leics.sch.uk</a>
Lutterworth Sherrier Primary School	<a href="http://www.Sherrierprimaryschool.co.uk">www.Sherrierprimaryschool.co.uk</a>
Manorfield Primary School, Stoney Stanton	<a href="http://www.Manorfield.leics.sch.uk">www.Manorfield.leics.sch.uk</a>
Market Harborough C of E Academy	<a href="http://www.Marketharboroughcofe.co.uk">www.Marketharboroughcofe.co.uk</a>
Meadowdale Primary School - Market Harborough	<a href="http://www.Meadowdale.Info">www.Meadowdale.Info</a>
Measham C Of E Primary School	<a href="http://www.Meashamprimary.org">www.Meashamprimary.org</a>
Mercenfeld Primary School - Markfield	<a href="http://www.mercenfeld.bepschools.org">www.mercenfeld.bepschools.org</a>
Merton Primary School - Syston	<a href="http://www.merton.bepschools.org">www.merton.bepschools.org</a>
Millfield L.E.A.D Academy - Braunstone	<a href="http://www.Millfieldacademy.co.uk">www.Millfieldacademy.co.uk</a>
Mountfields Primary School - Loughborough	<a href="http://www.Mountfieldslodge.leics.sch.uk">www.Mountfieldslodge.leics.sch.uk</a>
Newcroft Primary School – Shepshed	<a href="http://www.Newcroftprimaryacademy.co.uk">www.Newcroftprimaryacademy.co.uk</a>
New Lubbesthorpe Primary School	<a href="http://www.Newlubbesthorpe.leics.sch.uk">www.Newlubbesthorpe.leics.sch.uk</a>
Newtown Linford Primary School	<a href="http://www.newtown.bepschools.org">www.newtown.bepschools.org</a>
Oakthorpe Primary School	<a href="http://www.oakthorpeprimary.co.uk">www.oakthorpeprimary.co.uk</a>
Old Dalby Primary School	<a href="http://www.Olddalbyschool.org.uk">www.Olddalbyschool.org.uk</a>
Old Mill Primary - Broughton Astley	<a href="http://www.Oldmillprimary.co.uk">www.Oldmillprimary.co.uk</a>
Outwoods Edge Primary School - Loughborough	<a href="http://www.Outwoodsedge.leics.sch.uk">www.Outwoodsedge.leics.sch.uk</a>
Parkland Primary School – South Wigston	<a href="http://www.parklandprimary.co.uk">www.parklandprimary.co.uk</a>
Pastures Primary School - Narborough	<a href="http://www.Pasturesprimary.com">www.Pasturesprimary.com</a>
Pochin School - Barkby	<a href="http://www.pochin.bepschools.org">www.pochin.bepschools.org</a>
Ratby Primary School	<a href="http://www.ratby.bepschools.org">www.ratby.bepschools.org</a>
Red Hill Field Primary School - Narborough	<a href="http://www.Redhillfield.com">www.Redhillfield.com</a>
Redlands Primary School - Sileby	<a href="http://www.Redlands.org.uk">www.Redlands.org.uk</a>
Rendell Primary School - Loughborough	<a href="http://www.rendellps.leics.sch.uk">www.rendellps.leics.sch.uk</a>
Richard Hill Primary School, Thurgate	<a href="http://www.Richardhillschool.co.uk">www.Richardhillschool.co.uk</a>
Richmond Primary School - Hinckley	<a href="http://www.Richmond.leics.sch.uk">www.Richmond.leics.sch.uk</a>
Ridgeway Primary School - Market Harborough	<a href="http://Ridgewayprimary.com">Ridgewayprimary.com</a>
Riverside Primary School - Birstall	<a href="http://www.Riversideacademy.org.uk">www.Riversideacademy.org.uk</a>
Robert Bakewell Primary School - Loughborough	<a href="http://www.Robertbakewellprimary.com">www.Robertbakewellprimary.com</a>
Rothley Primary School	<a href="http://www.Rothley.leics.sch.uk">www.Rothley.leics.sch.uk</a>
Seagrave Primary School	<a href="http://www.seagrave.bepschools.org">www.seagrave.bepschools.org</a>
Sherard Primary School, Melton	<a href="http://www.sherardschool.org">www.sherardschool.org</a>

Sir John Moore – Appleby Magna	<a href="http://www.Sirjohnmoore.co.uk">www.Sirjohnmoore.co.uk</a>
Somerby Primary School	<a href="http://www.Somerby.org.uk">www.Somerby.org.uk</a>
South Kilworth C Of E Primary	<a href="http://www.Southkilworthprimaryschool.com">www.Southkilworthprimaryschool.com</a>

<b>Primary Schools</b>	<b>Link To Website</b>
St Andrew's Primary School - North Kilworth	<a href="http://www.Standrewsnorthkilworth.co.uk">www.Standrewsnorthkilworth.co.uk</a>
St Lukes Primary School - Thurnby	<a href="http://www.st-lukes.leics.sch.uk">www.st-lukes.leics.sch.uk</a>
St Margaret's C Of E Primary School - Blackfordby	<a href="http://www.Blackfordbyschool.org">www.Blackfordbyschool.org</a>
St Peter & St Paul Academy - Syston	<a href="http://www.spspacademy.org">www.spspacademy.org</a>
St Peters CofE Primary School, Whetstone *	<a href="http://www.Stpeterswhetstone.co.uk">www.Stpeterswhetstone.co.uk</a>
St Simons And St Judes CE Primary School	<a href="http://www.Stsimonandstjude.leics.sch.uk">www.Stsimonandstjude.leics.sch.uk</a>
Stafford Leys Academy - Leicester Forest East	<a href="http://www.staffordleys.bepschools.org">www.staffordleys.bepschools.org</a>
Stanton Under Bardon Primary School	<a href="http://www.Stanton-U-B.leics.sch.uk">www.Stanton-U-B.leics.sch.uk</a>
Stonebow Primary School - Loughborough	<a href="http://www.Stonebow.leics.sch.uk">www.Stonebow.leics.sch.uk</a>
Swallowdale Primary School - Melton Mowbray	<a href="http://www.swallowdale.bepschools.org">www.swallowdale.bepschools.org</a>
Swanningon CofE Primary School	<a href="http://www.swanningtonceprimary.org">www.swanningtonceprimary.org</a>
Swinford Primary School	<a href="http://www.swinford.leics.sch.uk">www.swinford.leics.sch.uk</a>
The Meadow Primary School – Wigston	<a href="http://www.meadowprimaryschool.co.uk">www.meadowprimaryschool.co.uk</a>
Thornton Primary School	<a href="http://www.Thornton.leics.sch.uk">www.Thornton.leics.sch.uk</a>
Thringstone Primary School	<a href="http://www.Thringstone.leics.sch.uk">www.Thringstone.leics.sch.uk</a>
Thrussington Primary School	<a href="http://www.Thrussington.leics.sch.uk">www.Thrussington.leics.sch.uk</a>
Townlands C Of E Priacademy - Earl Shilton	<a href="http://www.Townlandsprimary.org">www.Townlandsprimary.org</a>
Tugby C Of E Primary	<a href="http://www.Tugby.leics.sch.uk">www.Tugby.leics.sch.uk</a>
Viscount Beaumont C Of E Primary School - Coleorton	<a href="http://www.Viscountbeaumonts.leics.sch.uk">www.Viscountbeaumonts.leics.sch.uk</a>
Willesley Primary School - Ashby	<a href="http://www.Ashbywillesley.org.uk">www.Ashbywillesley.org.uk</a>
Woodland Grange Primary School, Oadby	<a href="http://www.Woodlandwideweb.org.uk">www.Woodlandwideweb.org.uk</a>
Woolden Hill Primary School - Anstey	<a href="http://www.wooldenhillprimary.org.uk">www.wooldenhillprimary.org.uk</a>
Waltham On The Wolds CE Primary School	<a href="http://www.Waltham.leics.sch.uk">www.Waltham.leics.sch.uk</a>
Holy Cross Catholic Primary School – Whitwick *	<a href="http://www.Holycrosswhitwick.co.uk">www.Holycrosswhitwick.co.uk</a>
Sacred Heart Catholic Vol Academy-Loughborough *	<a href="http://www.Sacredheart.leicester.sch.uk">www.Sacredheart.leicester.sch.uk</a>
Saint Francis Catholic Primary School, Melton *	<a href="http://st-francis.leics.sch.uk">st-francis.leics.sch.uk</a>
St Clares Catholic Voluntary Academy – Coalville *	<a href="http://www.St-Clares.leics.sch.uk">www.St-Clares.leics.sch.uk</a>
St John Fisher CE Primary School - Wigston *	<a href="http://www.Stjohnfisher-Wigston.leics.sch.uk">www.Stjohnfisher-Wigston.leics.sch.uk</a>
St Josephs Catholic Vol Academy - Market Harborough *	<a href="http://www.Stjosephs.leics.sch.uk">www.Stjosephs.leics.sch.uk</a>
St Marys Catholic Primary School - Loughborough *	<a href="http://www.Stmarysloughborough.org.uk">www.Stmarysloughborough.org.uk</a>
Saint Peters Catholic Primary School - Earl Shilton *	<a href="http://www.Stpetersprimary.org">www.Stpetersprimary.org</a>
Saint Peters Catholic Primary School - Hinckley *	<a href="http://www.Stpetershinckley.Net">www.Stpetershinckley.Net</a>
St Winefrides Catholic Voluntary Primary School *	<a href="http://www.Winefrides-Rc.leics.sch.uk">www.Winefrides-Rc.leics.sch.uk</a>
<b>Secondary Schools</b>	<b>Link to website</b>
Ashby School	<a href="http://www.ashbyschool.org.uk">www.ashbyschool.org.uk</a>
Beauchamp College - Oadby	<a href="http://www.beauchamp.org.uk">www.beauchamp.org.uk</a>
Belvoir HS - Bottesford	<a href="http://www.belvoirhigh.leics.sch.uk">www.belvoirhigh.leics.sch.uk</a>
Bosworth Academy - Desford	<a href="http://www.bosworthacademy.org.uk">www.bosworthacademy.org.uk</a>
Brockington CC - Enderby	<a href="http://www.brockington.leics.sch.uk">www.brockington.leics.sch.uk</a>
Castle Rock HS - Coalville	<a href="http://www.castlerocksch.uk">www.castlerocksch.uk</a>
Cedars Academy - Birstall	<a href="http://www.thecedarsacademy.org.uk">www.thecedarsacademy.org.uk</a>

Charnwood College	<a href="http://www.charnwoodcollege.org">www.charnwoodcollege.org</a>
Countesthorpe Leysland CC	<a href="http://www.clcc.college">www.clcc.college</a>
De Lisle College, Loughborough *	<a href="http://www.delisle.org.uk">www.delisle.org.uk</a>
Gartree HS - Oadby	<a href="http://www.gartree.leics.sch.uk">www.gartree.leics.sch.uk</a>
Brookvale High School	<a href="http://www.brookvalegroby.com">www.brookvalegroby.com</a>
Hastings High School - Burbage	<a href="http://www.hastings.school">www.hastings.school</a>
Heath Lane Academy - Earl Shilton	<a href="http://www.heathlane.midlandat.co.uk">www.heathlane.midlandat.co.uk</a>
<b>Primary Schools</b>	<b>Link To Website</b>
Hinckley Academy	<a href="http://www.hinckleyacademy.co.uk">www.hinckleyacademy.co.uk</a>
Humphrey Perkins School - Barrow	<a href="http://www.humphreyperkins.org.uk">www.humphreyperkins.org.uk</a>
Ibstock Community College	<a href="http://www.ibstockcollege.co.uk">www.ibstockcollege.co.uk</a>
Ivanhoe College – Ashby	<a href="http://www.ivanhoe.co.uk">www.ivanhoe.co.uk</a>
Iveshead School, Shepshed	<a href="http://www.ivesheadschoo.org">www.ivesheadschoo.org</a>
John Ferneley College - Melton Mowbray	<a href="http://www.johnferneley.org">www.johnferneley.org</a>
Kibworth High School	<a href="http://www.kibworth-tmet.uk">www.kibworth-tmet.uk</a>
Limehurst Academy - Loughborough	<a href="http://www.limehurst.org.uk">www.limehurst.org.uk</a>
Longfield HS - Melton Mowbray	<a href="http://www.longfieldacademy.org.uk">www.longfieldacademy.org.uk</a>
Lutterworth College	<a href="http://www.lutterworthcollege.com">www.lutterworthcollege.com</a>
Lutterworth HS	<a href="http://www.lutterworthhigh.co.uk">www.lutterworthhigh.co.uk</a>
Manor HS - Oadby	<a href="http://www.manorhigh.leics.sch.uk">www.manorhigh.leics.sch.uk</a>
Martin HS - Anstey	<a href="http://www.martinhigh.org.uk">www.martinhigh.org.uk</a>
Rawlins Academy - Quorn	<a href="http://www.rawlinsacademy.org.uk">www.rawlinsacademy.org.uk</a>
Robert Smyth Academy	<a href="http://www.robertsmyth.tgacademy.org.uk">www.robertsmyth.tgacademy.org.uk</a>
Roundhill Academy - Thurmaston	<a href="http://www.roundhill.bepschools.org">www.roundhill.bepschools.org</a>
South Charnwood High School	<a href="http://www.southcharnwood.leics.sch.uk">www.southcharnwood.leics.sch.uk</a>
South Wigston High School	<a href="http://www.southwigston.leics.sch.uk">www.southwigston.leics.sch.uk</a>
St Martins Catholic Academy, Stoke Golding *	<a href="http://www.saint-martins.net">www.saint-martins.net</a>
Thomas Estley CC - Broughton Astley	<a href="http://www.thomasestley.org.uk">www.thomasestley.org.uk</a>
Welland Park Academy - Market Harborough	<a href="http://www.wellandparkacademy.co.uk">www.wellandparkacademy.co.uk</a>
Wigston Academy	<a href="http://www.wigstonacademy.org">www.wigstonacademy.org</a>
Winstanley School - Braunstone	<a href="http://www.winstanleyschool.org.uk">www.winstanleyschool.org.uk</a>
Woodbrook Vale HS - Loughborough	<a href="http://www.woodbrookvale.leics.sch.uk">www.woodbrookvale.leics.sch.uk</a>
Wreake Valley Academy - Syston	<a href="http://www.wreake.bepschools.org">www.wreake.bepschools.org</a>

Schools marked with \* may need a supplementary form completing, the supplementary form can be obtained directly from the school.

### **Appendix 3: ACADEMIES RUNNING THEIR OWN ARRANGEMENTS**

<b>School</b>	<b>Address</b>	<b>Telephone</b>
All Saints CE Primary School, Sapcote	Bassett Lane, Sapcote, LE9 4FB	<b>01455 272973</b>
Arnesby Primary School	Mill Hill Road, Arnesby, LE8 5WG	<b>0116 2478563</b>
Claybrooke Primary School	Main Road, Claybrooke Parva, LE17 5AF	01455 209238
Dunton Bassett Primary School	The Mount, Dunton Bassett, LE17 5JL	01455 209557
Gilmorton Chandler CE Primary School	Church Lane, Gilmorton, LE17 5LU	01455 552343
John Wycliffe Primary School	Moorbarns Lane, Lutterworth, LE17 4QJ	01455 553135



Redmoor Academy - Hinckley	<a href="http://www.redmooracademy.org">www.redmooracademy.org</a>	
Sharnford CE Primary School	Henson Way, Sharnford, LE10 3PN	01455 272456
St Margaret's CE Primary School, Stoke Golding	High Street, Stoke Golding, Warks, CV13 6HE	01455 212393
St Mary's CE Primary School, Bitteswell	The Green, Bitteswell, LE17 4SB	01455 552818
Swinford CE Primary School	School Lane, Swinford, LE17 6BG	01788 860404
Ullesthorpe CE Primary School	Ashby Road, Ullesthorpe, LE17 5DN	01455 209926

## ALL SAINTS CE PRIMARY SCHOOL, SAPCOTE

### **MID TERM (IN-YEAR) ADMISSIONS ARRANGEMENTS 2021/22 ACADEMIC YEAR**



If you are thinking of moving your child(ren) to our school, please call us on 01455 272973 or email us at [allsaints@ipat.uk](mailto:allsaints@ipat.uk) to enquire if we have places available in the relevant year group(s). We will offer you a tour of the school with a representative from our leadership team.

Mid term applications for 2021/22 should be made on the form below which should be completed and emailed to [allsaints@ipat.uk](mailto:allsaints@ipat.uk). You will be notified of the admission decision within 10 school days. If applicable, you will also be notified of the appeal procedure (see Admissions Appeals below).

[Admission application form for ipat schools \(.docx\)](#)

## ARNESBY PRIMARY SCHOOL

### **MID TERM (IN YEAR) ADMISSIONS ARRANGEMENTS 2021/22 ACADEMIC YEAR**



If you are thinking of moving your child(ren) to our school, please call us on 0116 247 8563 or email us at [office@arnesby.embracemat.org](mailto:office@arnesby.embracemat.org) to enquire if we have places available in the relevant year group(s). We will gladly offer you a tour of the school with a representative from our leadership team.

Mid term applications for 2021/22 should be made on the form below which should be completed and emailed to [office@arnesby.embracemat.org](mailto:office@arnesby.embracemat.org). You will be notified of the admission decision within 10 school days. If applicable, you will also be notified of the appeal procedure (see Admissions Appeals below).

## CLAYBROOK PRIMARY SCHOOL

### **MID TERM (IN-YEAR) ADMISSIONS ARRANGEMENTS 2021/22 ACADEMIC YEAR**



If you are thinking of moving your child(ren) to our school, please call us on 01455 209238 or email us at [office@claybrooke.leics.sch.uk](mailto:office@claybrooke.leics.sch.uk) to enquire if we have places available in the relevant year group(s). We will offer you a tour of the school with a representative from our leadership team.



Mid term applications for 2021/22 should be made on the form below which should be completed and emailed to [office@claybrooke.leics.sch.uk](mailto:office@claybrooke.leics.sch.uk). You will be notified of the admission decision within 10 school days. If applicable, you will also be notified of the appeal procedure (see Admissions Appeals below).

---

## DUNTON BASSETT PRIMARY SCHOOL

### **MID TERM (IN-YEAR) ADMISSIONS ARRANGEMENTS 2021/22 ACADEMIC YEAR**



If you are thinking of moving your child(ren) to our school, please call us on 01455 209557 or email us at [schooloffice@duntonbassett.leics.sch.uk](mailto:schooloffice@duntonbassett.leics.sch.uk) to enquire if we have places available in the relevant year group(s). We will offer you a tour of the school with a representative from our leadership team.

Mid term applications for 2021/22 should be made on the form below which should be completed and emailed to [schooloffice@duntonbassett.leics.sch.uk](mailto:schooloffice@duntonbassett.leics.sch.uk). You will be notified of the admission decision within 10 school days. If applicable, you will also be notified of the appeal procedure (see Admissions Appeals below).

---

## GILMORTON CHANDLER CE PRIMARY SCHOOL

### **MID TERM (IN-YEAR) ADMISSIONS ARRANGEMENTS 2021/22 ACADEMIC YEAR**



If you are thinking of moving your child(ren) to our school, please call us on 01455 552343 or email us at [office@gilmortonchandler.leics.sch.uk](mailto:office@gilmortonchandler.leics.sch.uk) to enquire if we have places available in the relevant year group(s). We will offer you a tour of the school with a representative from our leadership team.

Mid term applications for 2021/22 should be made on this form which should be completed and emailed to [office@gilmortonchandler.leics.sch.uk](mailto:office@gilmortonchandler.leics.sch.uk). You will be notified of the admission decision within 10 school days. If applicable, you will also be notified of the appeal procedure (see Admissions Appeals below).

---

## JOHN WYCLIFFE CE PRIMARY SCHOOL

### **MID TERM (IN-YEAR) ADMISSIONS ARRANGEMENTS 2021/22 ACADEMIC YEAR**



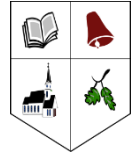
If you are thinking of moving your child(ren) to our school, please call us on 01455 553135 or email us at [schooloffice@jwps.uk](mailto:schooloffice@jwps.uk) to enquire if we have places available in the relevant year group(s). We will offer you a tour of the school with a representative from our leadership team.

Mid term applications for 2021/22 should be made on this form ([Admissions Application Form](#)) which should be completed and emailed to [schooloffice@jwps.uk](mailto:schooloffice@jwps.uk). You will be notified of the admission decision within 10 school days. If applicable, you will also be notified of the appeal procedure (see Admissions Appeals below).

---

## SHARNFORD CE PRIMARY SCHOOL

### **MID TERM (IN-YEAR) ADMISSIONS ARRANGEMENTS 2021/22 ACADEMIC YEAR**



If you are thinking of moving your child(ren) to our school, please call us on 01455 272456 or email us at [sharnford@ipat.uk](mailto:sharnford@ipat.uk) to enquire if we have places available in the relevant year group(s). We will offer you a tour of the school with a representative from our leadership team.

Mid term applications for 2021/22 should be made on the form below which should be completed and emailed to [sharnford@ipat.uk](mailto:sharnford@ipat.uk). You will be notified of the admission decision within 10 school days. If applicable, you will also be notified of the appeal procedure (see Admissions Appeals below).

---

## ST MARGARETS CE PRIMARY SCHOOL, STOKE GOLDING

### **MID TERM (IN-YEAR) ADMISSIONS ARRANGEMENTS 2021/22 ACADEMIC YEAR**



If you are thinking of moving your child(ren) to our school, please call us on 01455 212393 or email us at [office.sm@ipat](mailto:office.sm@ipat) to enquire if we have places available in the relevant year group(s). We will offer you a tour of the school with a representative from our leadership team.

Mid term applications for 2021/22 should be made on [this form](#) which should be completed and emailed to [office.sm@ipat](mailto:office.sm@ipat). You will be notified of the admission decision within 10 school days. If applicable, you will also be notified of the appeal procedure (see Admissions Appeals below).

---

## ST. MARY'S C OF E PRIMARY, BITTESWELL

### **MID TERM (IN-YEAR) ADMISSIONS ARRANGEMENTS 2021/22 ACADEMIC YEAR**



If you are thinking of moving your child(ren) to our school, please call us on 01455 552818 or email us at [office@stmarysbitteswell.co.uk](mailto:office@stmarysbitteswell.co.uk) to enquire if we have places available in the relevant year group(s). We will offer you a tour of the school with a representative from our leadership team.

Mid term applications for 2021/22 should be made on this form below which should be completed and emailed to [office@stmarysbitteswell.co.uk](mailto:office@stmarysbitteswell.co.uk). You will be notified of the admission decision within 10 school days. If applicable, you will also be notified of the appeal procedure (see Admissions Appeals below).

[Admission application form for IPAT schools](#)

---

## SWINFORD COFE PRIMARY SCHOOL

### **MID TERM (IN-YEAR) ADMISSIONS ARRANGEMENTS 2021/22 ACADEMIC YEAR**



If you are thinking of moving your child(ren) to our school, please call us on 01788 860404 or email us at [admin@swinford.embracemat.org](mailto:admin@swinford.embracemat.org) to enquire if we have places available in the relevant classes or year group(s). We will offer you a tour of the school with a member of our team.

Mid term applications for 2021/22 should be made on our Governors Admissions Form (available from within the admissions section of our website). This form should be completed and delivered to our school office or scanned and emailed to [admin@swinford.embracemat.org](mailto:admin@swinford.embracemat.org). You will be notified of the admission decision within 10 school days. If applicable, you will also be notified of the appeals procedure as outlined within our admissions policy

---

## ULLESTHORPE CE PRIMARY SCHOOL

### **MID TERM (IN-YEAR) ADMISSIONS ARRANGEMENTS 2021/22 ACADEMIC YEAR**



If you are thinking of moving your child(ren) to our school, please call us on 01455 209926 or email us at [ullesthorpe@ipat.uk](mailto:ullesthorpe@ipat.uk) to enquire if we have places available in the relevant year group(s). We will offer you a tour of the school with a representative from our leadership team.

Mid term applications for 2021/22 should be made on the form below which should be completed and emailed to [ullesthorpe@ipat.uk](mailto:ullesthorpe@ipat.uk). You will be notified of the admission decision within 10 school days. If applicable, you will also be notified of the appeal procedure (see Admissions Appeals below). [Admission application form for IPAT schools](#)

---

## THURMASTON CHURCH HILL JUNIOR SCHOOL



Applications during the School Year If you would like to move your child to our school, please contact the school office to arrange a tour and to meet the Headteacher. Mid term applications for 2021/22 should be made using the form on the website. You will be notified of the decision within 10 school days. If applicable, you will also be notified of the appeal procedure.

[Admission form for Thurmaston Church Hill Junior School](#)

Application Form for the above academies only in the **Inspiring Primaries Academy Trust** - once completed please forward to relevant school:



Inspiring Primaries Academy Trust  
Inspiring pupils to achieve for their tomorrows

**APPLICATION TO THE LOCAL GOVERNING BODY FOR ADMISSION TO:**

**NAME OF SCHOOL:**

It is important that this form is completed accurately and full details given. The form is made available to the Independent Appeal Panel in the case of an appeal against non-admission. In all other respects, the information is treated in confidence. If you require assistance in the completion of the form, please contact our school office.

**CHILD'S DETAILS:**

SURNAME	
FORENAMES	
HOME ADDRESS (INCLUDE POSTCODE)	
DATE OF BIRTH	

**PARENT/GUARDIAN/CARER DETAILS:**

	PARENT/GUARDIAN/CARER	PARENT/GUARDIAN/CARER
TITLE		
SURNAME		
FORENAME		
TELEPHONE NUMBER		

I/we wish my/our child to be admitted to the school and confirm that the information given is correct. Our application for admission is under criterion number \_\_\_ of the school's Admission Policy (please see school website for details).

I/we understand the need to provide proof of address and of the child's date of birth.

Signed / dated by a person(s) with legal responsibility for the child.

**Office use only: Proof of address seen (sign and date)  
Evidence of date of birth seen (sign and date)**



# The Market Bosworth School

An Outstanding Leicestershire Academy

## Joining the school in all other years or during Year 7

The Market Bosworth School manages its own “in year” admissions. “In year” admissions for The Market Bosworth School is any admission that would take place after the normal admission round for Year 7 Students.

If you would like a copy of an “In year” application form for TMBS, they are available from the schools main office, or electronically via email on: [admissions@tmbs.org.uk](mailto:admissions@tmbs.org.uk)

The school will aim to notify parents of the outcome of their application in writing within 10 school days, but will notify in writing within 15 school days.

In the event the application is unsuccessful, there is the right to appeal. An appeal form will be provided, where you set out your grounds for appeal, and the appeal will be heard within 30 school days of receipt of the appeal.

Should you wish to speak with us about the application / appeals process, or the current availability of places in a particular year group, please contact:

**Mr Slattery, Assistant Principal**

Email [admissions@tmbs.org.uk](mailto:admissions@tmbs.org.uk)

Telephone (Main Reception) 01455 290251

All admissions for The Market Bosworth School are considered in line with the [DFE School Admissions code](#) (PDF).

---



## Admissions Arrangements

### Joining the school at the beginning of Year 7

If you are currently in Year 6 and would like to join our school, please make your application before 31st October. Applications must be made through the Local Authority in which you live. For Redmoor Academy, this is usually Leicestershire County Council:

## [Leicestershire County Council](#)

We traditionally hold open events for prospective Year 7 students and their parents in September and October;

- If you are in Year 6 and would like a tour of the school during the day, please contact Mrs Davey to arrange an appointment: [office@redmooracademy.org](mailto:office@redmooracademy.org)
- Our Open Evening is on **Wednesday 27th September 2023**. Please see our website for further information.

### **Joining the school in all other years or during Year 7**

Redmoor Academy manages its own “in year” admissions. “In year” (or Mid-Term) admissions for Redmoor Academy is any admission that would take place after the start of the academic year in the Autumn to join the school during that same academic year.

Please note: a waiting list only exists for entry into Year 7 until the end of the Autumn Term in that academic year. Please see our admissions policy for full details.

To apply for a place at Redmoor Academy, please complete our “in year” application form;

#### [In Year Application Form](#)

Should you wish to speak with us about the application process, appeals or the current availability of places in a particular year group, please contact:

Mrs Davey (Principal’s PA); [ldavey@redmooracademy.org](mailto:ldavey@redmooracademy.org)

The school will aim to notify parents of the outcome of their application within 10 school days, but will notify in writing within 15 school days.

In the event the application is unsuccessful, there is the right to appeal. An appeal form will be provided if required, where you set out your grounds for appeal, and the appeal will be heard within 30 school days of receipt of the appeal form.

All admissions for Redmoor Academy are considered in line with the DfE School Admissions code which can be found at:

#### [DfE School Admissions Code](#)

### **Statutory Information**

Redmoor Academy Admissions Policy 2023- 2024



## Redmoor Academy Admissions Policy 2024- 2025

Redmoor Academy Catchment Map

[Timetable for Appeals](#)

### **ACADEMIES YET TO CONFIRM THEIR ARRANGEMENTS**

Brockington CC - Enderby	<a href="http://www.brockington.leics.sch.uk">www.brockington.leics.sch.uk</a>
Castle Donington College	<a href="http://www.cdcollege.uk">www.cdcollege.uk</a>
Hastings High School - Burbage	<a href="http://www.hastings.school">www.hastings.school</a>
Queniborough Primary School	<a href="https://quenischool.org.uk/">https://quenischool.org.uk/</a>