

NEMMDR - Melton Mowbray Distributor Road UPDATE January 2025

Local community support continues...

Santa Sleigh Collection

COME OUT AND WAVE TO SANTA AS HE PASSES

His helpers will be alongside him collecting to help support local groups in our community who help the most disadvantaged in times of need.

Routes

Between 6.00pm and 8.00pm each evening

Monday 2nd December
From the Woolly including Highfield Ave, West Ave, Charnwood Dr, Sherwood Dr, Dorothy Ave, Rudbrook Ave, Stirling Rd

Tuesday 3rd December
From Redwood Ave including Clarke Dr, Wymondham Way, Grannere Rd, Wycliffe Ave, Eastfield Ave, Cedar Dr

Wednesday 4th December
From the Cherry Trees including Heather Cres, Eldon Rd, Swallowdale Rd, Valley Rd, Tamar Rd, Leicester Rd, Redbrook Cres

Thursday 5th December
From The Edge including Queensway, Pinewood Dr, Blakeney Cres, Harlapp Rd, Barker Cres, Brownlow Cres

Monday 9th December
From Baldocks Lane including Sapcote Dr, Gaidaloupe Ave, Grange Dr, Wicklow Ave, Hunters Rd

Tuesday 10th December
From Tesco including Bowley Ave, Fensley Cres, Bolivar St, Doctors Ln, Salisbury Ave, Kings Rd, Alington Rd

spread the christmas cheer

Sponsored and supported by the Melton Mowbray Distributor Road project team

We are delighted to have once again supported the Melton Aurora Rotary Club Santa Sleigh collection 2024. We had the pleasure of welcoming Santa and his helpers to the site office whilst on their collection round. The sleigh sponsorship funding was raised by our key supply chain partners delivering the NEMMDR project.



Rotary Club joint presidents Cristopher Joseph and Paul Saxby said:

"The Rotary club of Melton Aurora are very grateful for the continued support of the MMDR project delivery team. Once again raising the funds to help us with this year's Santa Sleigh collection. With the funds donated we have doubled the outings of the float. This means we will be able to help our local charities such as the Storehouse Foodbank, Peppers - A Safe Place, Coats for Kids and other worthy charities in Melton. The amount collected by our rotary club is Approx £4300. We are really grateful to Galliford Try and the MMDR project delivery team, this amount would not have been possible without your help"

For any enquiries, please email: gino.salvatore@gallifordtry.co.uk or call 07918 640481

Progress and upcoming works

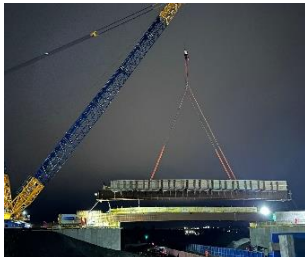
Summary of work progressed or completed in December 2024.

- Drainage works across scheme progressing.



- Melton Spinney Road / Twin Lakes access works progressing.

- Rail bridge beam installation works completed.



Summary of planned and ongoing work for January 2025

- Melton Spinney Road new roundabout construction.
- Road layout, footways and bridge installation works across scheme ongoing.

Updated scheme photographs and drone footage is available for you to view on this link [MMDR on Kuula](#)



Melton Spinney Road Closure Notice

6:00am on Monday 27th January until 11:59 pm on Sunday 13th April 2025.

Details are available on the attached email notification letter sent with this newsletter .
if you prefer you can visit the project website on link below.

www.leicestershire.gov.uk/nemmdr

Temporary two way traffic lights safety alert.

The delivery of the project requires temporary two-way traffic lights across the scheme. For your own safety and that of our workforce please adhere to traffic light systems when operational.



If you know somebody who would be interested in subscribing to our newsletter, please email: gino.salvatore@gallifordtry.co.uk

Alternatively, you can visit the County Council's project website for further details , view traffic management plans and the overall scheme design.

www.leicestershire.gov.uk/nemmdr

For any enquiries, please email: gino.salvatore@gallifordtry.co.uk or call 07918 640481