

Zouch Bridge Replacement News

June 2025



Newsletter number 3



Aerial photograph May 25

Welcome to our latest Zouch bridge update

The design of the bridge has been finalised; the steelwork is being produced and is due to arrive on site soon. More details inside, including road closure information.

Working in partnership with...



What's inside:

[Bridge delivery](#)

[Road closures](#)

[Update pictures](#)

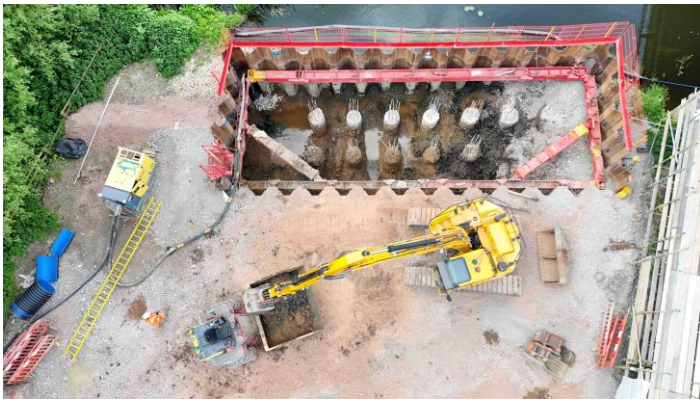
[Works Summer 2025](#)

[Social Value update](#)

[Information links](#)

Update June 2025

We are continuing to work within the cofferdams which were built last year, constructing the piled foundations, abutments and the piers on which the new bridge will be constructed. See below for update pictures.



Here you can see the concrete piles



- For more information on Eric Wright Eric Wright Civil Engineering please visit ericwright.co.uk

Steelwork delivery

Scheduled for the 25th & 26th June 2025, the steelwork sections of the bridge will be delivered to site.

Shipped from Belgium, these are being transported in 6 deliveries, with a police escort on the A6006, from the junction to the site compound. The last 3 parts of the bridge are due to arrive early September.

Road closures

This will necessitate **temporary road closures overnight**. There will be a signed diversion route, during the hours of 6pm-6am on both nights. This is because the transport vehicles have to reverse onto site as they are too large to turn. Emergency access will be maintained for the whole duration of the closures.

To keep up to date with the scheme, please see www.leicestershire.gov.uk/zouch-bridge-replacement-scheme

Site progress pictures to end May 2025



Aerial view looking East to West, towards A6



Cofferdams – for the 2 piers, East & West, existing bridge in background



Cofferdams for the two piers and the east abutment. Aerial view of the west pier and cofferdam adjacent to the existing carriageway and Loughborough Boat Club



Main works – Summer 2025

The steelwork for the bridge will be stored on site and assembled ready for jacking into place later in the summer. This is a complex operation due to the overhead cables & pilons in close proximity to the site.

To get ready for the installation, over the summer we will continue to build the piers and abutments that the superstructure will be attached to. This involves continuing to work in river, using the cofferdams for dry working and protection.

Earthworks for the new road stretch will commence also this Summer period, making the best of the better weather before Winter.

By the end of the Year, the bridge will be installed, and we will be ready to start tying in the new structure to the existing services so that it can become operational.

For more information on Eric Wright Civil Engineering please visit ericwright.co.uk

To keep up to date with the scheme, please see www.leicestershire.gov.uk/zouch-bridge-replacement-scheme

For all enquires please contact Public Liaison Officer Lesley Davison at Eric Wright:
ZouchBridgeEnquiries@ericwright.co.uk



Lesley Davison, Public Liaison Officer, EWCE

Social value update



Since the last newsletter we have hosted site visits for 30 Civil Engineering students, studying at Loughborough University. The visits were hosted by our project delivery team and covered the history of the bridge and why it is being replaced, along with an overview of the demolition and construction processes, the engagement between our client Leicestershire County Council, the design teams and Eric Wright Civil Engineering as the main contractor. This was followed by an update of the current progress of the scheme, the temporary works, bridge piers and logistics plans. Visits to industry, help students see what they are learning in university in practice.