

# New buses connect communities

More boosts to bus travel in Leicestershire are underway, with commuters and shoppers already taking advantage.

Focusing on popular locations, railway stations and new developments, the new and improved bus services are continuing their rollout.

Our latest changes are designed to better connect new areas in Loughborough, North West Leicestershire and Hinckley and Bosworth with tourist destinations, linking more towns and villages through public transport.

The bookable FoxConnect Service is now available in North West Leicestershire, South West Leicestershire, Melton and Market Harborough, with 11 zones across the county.

To celebrate the launch in North West Leicestershire, travel is free on this new service until Saturday, 16 August. Journeys can be booked in the FoxConnect app or on the phone.

In Harborough, four new town centre routes have recently taken to the road and a new timetabled bus service between Fosse Park and Hinckley bus station has also started.



Councillor Dan Harrison, leader of Leicestershire County Council, with the new timetables

The improvements are part of our review of supported bus services, which have been partly funded by the Government.

Councillor Dan Harrison, leader of Leicestershire County Council, said: "This work is helping to create real change for bus users in Leicestershire. We hope they better connect communities to key destinations, support local economies and reconnect our rural towns in the county."




## Q: What is FoxConnect?

A: It's a flexible service helping you to travel between villages in the county. You choose where to be picked up and dropped off within a certain area. It's available in South West Leicestershire, Melton, North West Leicestershire and Market Harborough. You can travel anywhere within each 'zone' and book either on the app or by phone.

## Q: Where has the money come from?

A: Partly from the Government as part of our review into supported bus services.

## Q: What else has changed?

A: We've improved some existing bus services in Loughborough and North West Leicestershire. There's also a new, direct bus linking Hinckley and Fosse Park and a one-year pilot 'shopper' service connecting Market Harborough to Corby.

## Q: What's next?

A: We'll be working with commercial operators this summer to review existing bus services in Hinckley and parts of Blaby district and Oadby and Wigston borough.

## Find out more?

Visit [choosehowyoumove.co.uk/leicestershire-foxconnect](https://choosehowyoumove.co.uk/leicestershire-foxconnect) or scan the QR code. Download the FoxConnect app on your phone now, search FoxConnect in the Apple App Store or Google Play Store.

You can also book on the phone by calling 0116 216 7756.

Paper timetables and maps are also available at your local library or email [choosehowyoumove@leics.gov.uk](mailto:choosehowyoumove@leics.gov.uk).







Leicestershire Matters is sent to all residents in the county of Leicestershire.

It costs around 12p to print and deliver each copy. To help save money on the distribution, we work closely with Royal Mail. We're sorry if you receive Leicestershire Matters just over the border in a neighbouring county - but by using standard postal routes we actually save £750 per issue.

## Contact us

### leicestershire.gov.uk

Our website focuses on the most popular things that people want to do online. So next time you need to find or do something with the council, go online at leicestershire.gov.uk

### Email

leics-matters@leics.gov.uk

X@LeicsCountyHall

Facebook LeicsCountyHall

Instagram LeicsCountyHall

TikTok @LeicsCountyCouncil

### General enquiries

Mon - Thur: 8.30am - 5pm

Fri: 8.30am - 4.30pm

Telephone: 0116 232 3232

### Post

Communications Team,  
Room 400, County Hall,  
Glenfield, Leicester, LE3 8RA

If you would like the information contained in this newsletter in an alternative version such as large print, Braille or tape, or help with understanding it in your language, please call 0116 305 6274 or email leics-matters@leics.gov.uk



When you have finished with this leaflet please recycle it

# Welcome

**Dan Harrison**, leader of Leicestershire County Council, introduces our summer edition



## Our goals are simple - delivering quality services and driving down costs.

Throughout this newsletter, you can see we're focusing on what matters most to you. Whether it's boosting buses and fixing pot holes or helping residents and businesses protect themselves from devastating flooding.

With a yearly budget of £650m – plus a £150m capital pot – the county council is like a large business. Local government faces huge financial challenges and with £90m savings needed over the next four years, efficiency has never been more important. A fresh approach is needed and we're looking at new ideas and insight to help identify more opportunities to save money. For the same reason, local government reorganisation has to place all councils on a firmer financial footing.

Around three-quarters of the council's budget is spent on supporting vulnerable people. I know first-hand how important care is

and I'm proud of the vital support we provide round-the-clock. Unpaid carers also play a big part in improving people's lives and are unsung heroes. If you're a carer, make sure you read page 12 and are up to date on the support that's available.

We're blessed with beautiful country parks and fascinating heritage attractions in Leicestershire. Make sure you explore them this summer and discover walks in our parks, family-friendly theatre shows and the inaugural DragonFest at Bosworth Battlefield. There were a huge 765,000 visits to our libraries last year and this year's children's summer reading challenge is sure to attract many more. See pages 10 and 11 for details.

From local area coordinators and foster carers to teaming up with schools to tackle vaping, we're working hard to improve residents' lives.

I hope you enjoy reading about their work.

# New report showcases scrutiny



## Driving service improvements and raising residents' concerns are just two of the main roles of our scrutiny committees.

Our councillors scrutinise local services to make sure they're effective as possible.

Last year, they made over 50 recommendations and took a fine-tooth comb to over 120 reports - including:

- Raising concerns about the growing deficit in the special education needs and disability support budget
- Receiving assurances about action to mitigate rising costs of the Melton Mowbray Distributor Road
- Raising concerns about childminders leaving the sector and welcoming the support in place for people entering the profession
- Raising concerns about the impact of new homes on flooding – and highlighting our limited powers
- Strengthening the new suicide prevention strategy to make sure family and friends are trained on spotting signs
- Suggesting more be done to provide people reporting an adult social care crisis with clearer information about timelines for a response.

Read our annual report:  
[leicestershire.gov.uk/scrutiny](https://leicestershire.gov.uk/scrutiny)

## Four of our councillors are 'commissioners' and decide on priority issues for scrutiny:



**Deborah Taylor CC**  
Chair of the Scrutiny Commission



**Michael Mullaney CC**  
Vice Chairman of the Scrutiny Commission



**Dr John Bloxham CC**  
Scrutiny Commissioner



**Andrew Innes CC**  
Scrutiny Commissioner



# New leadership takes the reins

A new leadership team is in place after the county council elections in May.

Reform UK has formed a minority administration to run the council and has appointed a new cabinet.

You can see the new-look cabinet, and who your local county councillor is, on pages 8 and 9.

**With local government reorganisation on the cards, and lots of interest in the council's priorities, we put your questions to council leader, Dan Harrison.**

**Q: What are the immediate priorities for the council?**

**DAN:** Our goal is driving down costs - in what we buy and how we work. Doing the basics well is a focus. We're looking at re-directing money into key areas we know matter to you, including

fixing pot holes and helping residents and businesses protect themselves from flooding.

We're also analysing the impact of the Government's recent spending review on our budget. Knowing what this, and the Government's review of local government funding, means for our finances and services is a determining factor in how we cut our cloth and secure a better funding deal for our residents.

**Q: What's happening with local government reorganisation?**

**DAN:** We have the chance to shape local government for future generations - and it's important we get it right. All councils face big financial challenges and change has to address this. I'm

working constructively on what is best for the county and the city together. It's also important to remember that reorganisation leads to another prize of a devolution deal - we cannot afford to fall further behind other regions.

**Q: How will you make the council's books balance?**

**DAN:** Efficiency is our watchword. With £90m savings needed over the next four years, we're open to new insight and ideas to help us identify further opportunities to save money. We'll be reviewing our savings plan to make sure we're getting maximum value for our Council Tax payers and getting fresh pairs of eyes from outside the council to help.



**Have your say**

We want to hear your views on the future of our services and strategies

[leicestershire.gov.uk/have-your-say](https://leicestershire.gov.uk/have-your-say)



**Get the latest council news straight to your inbox**

**Sign up at:**

[leicestershire.gov.uk/signup](https://leicestershire.gov.uk/signup)



One of the six new roundabouts on Scaford Road, near John Ferneley College



# Congestion-busting road makes **major progress**

Work on our biggest ever road project is well into its final phase.

The 4.5 mile distributor road in Melton Mowbray will help to reduce congestion in the town centre and support future growth of the local area. It will also keep HGVs away from unsuitable rural roads.

When finished it will include six roundabouts, four bridges and cycling and walking facilities. It's being built by Galliford Try, who will also divert the River Eye Site

of Special Scientific Interest.



Charles Whitford

Councillor Charles Whitford, cabinet member for roads, transport and waste,

said: "This investment and new road will have a hugely positive impact on what is already such a fantastic part of Leicestershire and it's great to see the scheme is on track."

Galliford Try are taking advantage of the quieter summer period to build the final two roundabouts and resurface roads, with temporary road closures in place so they can carry out the work.

The project is set to be completed in early 2026. Find out more by visiting [leicestershire.gov.uk/mmdr](https://leicestershire.gov.uk/mmdr) or scan the QR code.



## Important bridge replacement continues

Work is continuing to replace a 100-year-old bridge north of Loughborough. Located at Zouch, the bridge is on the A6006 over the River Soar.

Contractors Eric Wright Civil Engineering are working on the new bridge. It will be built next to the existing bridge, and a new road alignment will connect it to the A6006.

Work began last summer, and it's expected to be finished by spring 2027. Last month the first two sections of steelwork were delivered to the site to be assembled.

Find out more at [leicestershire.gov.uk/zouch-bridge-replacement-scheme](https://leicestershire.gov.uk/zouch-bridge-replacement-scheme) or scan the QR code.



Steelworks for the bridge being lowered into place







Councillor Charles Whitford at a road surfacing project

# Mammoth summer road resurfacing underway

With nearly 9,000 potholes fixed in 2024, the summer gives our highways teams a chance to continue their work protecting the road network.

Around £3m will be spent over the summer to refresh nearly 770,000 sq m of road, the same as nearly 100 football pitches.

Known as “surface dressing,” the work involves laying around 11,500 tonnes of stone chippings to seal roads, preventing potholes, keeping roads waterproof and improving road safety.

Councillor Charles Whitford, cabinet member for highways, said: “Fixing potholes is a priority and surface dressing helps us to reduce them.

“Our fantastic highways team undertake this work to help prevent more difficult and expensive repairs later.”

You can find more about our surface dressing and the 2025 schedule at

**leicestershire.gov.uk/surface-dressing** or scan the QR code.



**Tom Vesty from our highways team talks potholes.**

**Q: What should I do if I see a pothole?**

**TOM:** Report it as soon as it's safe. Use our form at [leicestershire.gov.uk/report-a-road-problem](https://leicestershire.gov.uk/report-a-road-problem). Your help in telling us makes a huge difference.

**Q: How do you prioritise potholes?**

**TOM:** All reports are inspected and we'll categorise any pothole or defect based on the risk it poses, and we'll arrange a repair depending on which category it falls into.

**Q: How are potholes formed?**

**TOM:** A number of ways but one in particular is water getting into older and worn road surfaces. It seeps in, freezes and expands the bituminous material. This is why we're busiest in the winter months.



## Rights of way

**We want to hear from you about our plan to boost public rights of way in the county.**

There's 1,915 miles of paths across Leicestershire, and our survey is open for your views.

Local walks, new opportunities for volunteers and better signs are included in the plan. The survey is open until 14 August and we'd love to hear your thoughts.

Visit [leicestershire.gov.uk/current-engagement](https://leicestershire.gov.uk/current-engagement) or scan the QR code to have your say.



**What we've done since 2011:**

**15,000**   
waymarker posts installed to show the way ahead

**10,000**  
visits made to clear vegetation

**1,500**   
stiles refreshed

**25,000**  
posts repainted

**1,700**   
hand or 'kissing gates' installed



# Safer school travel for children



Two primary schools will start next term with safer journeys for pupils and parents, thanks to a new scheme.

Coalville's St Clare's and Quorn-based St. Bartholomew's are introducing permanent 'school streets'.

The immediate roads of Willowcroft (Quorn) and Convent Drive (Coalville) will be closed off to traffic at drop off and pick up times.

Motor traffic is stopped from entering the road using a 'traffic regulation order' and a physical closure operated by volunteers, with the initiative giving children a more pleasant school run.

Fewer cars close to the school gates makes it feel safer and helps to make the air cleaner in and around the school grounds.

It also encourages walking, cycling and scooting instead of taking the car.

Both schools applied to be a part of the scheme and work took place to make sure that the location of the school was appropriate for the initiative.

Councillor Charles Whitford said: "It's been great to work with schools to bring this initiative in. We've trialled this in other parts of the county and we know

that it works really well, encouraging alternative ways of getting to and from school."

Our staff have been talking to parents, carers and residents and they'll be on hand during the first few days to help and support.

They'll be offering scooter training sessions for incoming early years/ Reception and Year one children, and Bike Skills sessions for years three, four and five.

School streets is funded through Active Travel England.

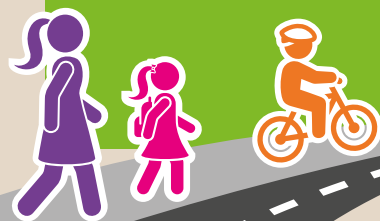
If more money becomes available schools will be invited to submit a bid.

See more about school streets at [choosehowyoumove.co.uk](https://choosehowyoumove.co.uk) or scan the QR code.



## More about school streets

- Roads are closed off to all traffic but residents, school staff and SEND schoolchildren can apply for an access pass to use the road.
- Emergency vehicle access is kept at all times thanks to the marshals who look after the cones and barriers.
- Schools that apply are checked to make sure the surrounding area is suitable for the scheme, including the type of road, park and stride facilities and how many people are impacted by the closures.





# JOIN OUR TEAM

## Fostering a caring environment

Danielle and Sarah's story highlights the 'life changing' role of foster carers.



Danielle and Sarah

With more than 700 children and young people currently living in care across Leicestershire, there's never been a greater need for foster carers.

Market Harborough-based Sarah, who became a foster carer more than 20 years ago, started caring for Danielle when she was 12-years-old.

Over 10 years, Danielle has become a part of Sarah's family and formed a special bond with her, which has made a huge difference for Danielle.

Danielle said: "Over the 10 years, the whole family have had a massive impact on me, teaching me what stable relationships look like, which I don't think I would know without them."

"I don't think of myself as a young person in care, and I haven't for many years. I tell people I'm not – I'm just a person in a family."

Sarah said: "Danielle has changed my life and over the 10 years of us being family, I've learnt how resilient she is. I'm so full of admiration for her."

The support of Sarah and her family has seen Danielle live out her dream of studying drama at university and enables her to still live back with Sarah outside of term time.



Charles Pugsley

Councillor Charles Pugsley, cabinet member for children and families, said:

"Danielle and Sarah's story is touching and highlights how important foster carers are for young people who need a caring, loving environment.

"I'd urge anyone inspired by this story to get in touch with our brilliant fostering team who will provide more information and guide you through the process."

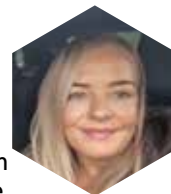
### Want to know more?

Visit the Fostering Leicestershire website at [leicestershire.gov.uk/fostering](https://leicestershire.gov.uk/fostering) or scan the QR code. You can also email [fostering@leics.gov.uk](mailto:fostering@leics.gov.uk), or call 0116 305 0505.



What our team says...

## Work with us - and transform lives



Katie, who works in our child protection team, has gone from being a trainee social worker to helping the newly qualified find their feet.

She said: "I'm proud of the positive changes I help families make every day, supporting parents to turn things around and watching children thrive as a result.

"My journey to the child protection and court team wouldn't have been possible without the support and training offered here.

"I feel genuinely supported by my colleagues and managers. There's a strong team spirit, when things get challenging, which they often do, we pull together."

Interested in joining our team?

View our latest vacancies at [leicestershire.gov.uk/jobs](https://leicestershire.gov.uk/jobs) or scan the QR code.



See more about working for us at [leicestershire.gov.uk/jobs](https://leicestershire.gov.uk/jobs)





# Your County Councillor for Leicestershire



## The Cabinet



**Dan Harrison CC**  
Leader

- National and regional relations
- Staff relations
- Local Resilience



**Joseph Boam CC**  
Deputy Leader

- Adult Social Care, Libraries, Adult Learning, Heritage



**Helen Butler CC**  
Resources

- Financial Services, including the Medium Term Financial Strategy, Human Resources, ICT, Customer Service Centre
- Property
- Traded Services and Investing in Leicestershire Programme



**Virge Richichi CC**  
Community Relations

- Relations with the armed forces, town and parish councils, the voluntary sector
- Chair of the Leicestershire Rural Partnership
- Regulatory Services



**Adam Tilbury CC**  
Environment and Flooding

- Flooding responsibilities and the Local Flood Risk Management Strategy
- Policy and strategy, including Local Nature Recovery Strategy
- Country Parks and Tree Strategy



**Charles Whitford CC**  
Highways, Transport and Waste

- Roads, Public Transport, Public Rights of Way
- Home to School Transport
- Waste Services (waste disposal, recycling and household waste sites)



**Charles Pugsley CC**  
Children and Family Services

- (designated Lead Member for Children and Young People)
- Education, Children's Social Care
- SEND
- Community Safety



**Harrison Fowler CC**  
Strategic Planning and Economic Development

- County Planning responsibilities, marketing, promotion and tourism



**Michael Squires CC**  
Health, Chair of the Health and Wellbeing Board

- Relations with NHS
- Public Health

## Blaby

### Blaby & Glen Parva

#### Dr John Bloxham CC

Reform UK

Tel: 0116 305 6964

Email: john.bloxham@leics.gov.uk



### Glenfields, Kirby Muxloe & Leicester Forests

#### Nick Chapman CC

Conservative

Tel: 07710 174005

Email: Nick.Chapman@leics.gov.uk



### Braunstone

#### Kim Robinson CC

Reform UK

Tel: 0116 305 7250

Email: kim.robinson2@leics.gov.uk



### Kevin Crook CC

Reform UK

Tel: 0116 305 4714

Email: kevin.crook@leics.gov.uk



### Cosby & Countesthorpe

#### Graham Cooke CC

Reform UK

Tel: 0116 305 7039

Email: graham.cooke@leics.gov.uk



### Narborough & Whetstone

#### Andrew Thorp CC

Reform UK

Email: andrew.thorp@leics.gov.uk



### Enderby & Lubbethorpe

#### Nicholas Holt CC

Liberal Democrats

Tel: 0116 305 2728

Email: nicholas.holt@leics.gov.uk



### Stoney Stanton & Croft

#### Carl Abbott CC

Reform UK

Tel: 07846 764642

Email: carl.abbott@leics.gov.uk



## North West Leicestershire

### Ashby de la Zouch

#### Dan Harrison CC

Reform UK

Tel: 01530 563 372

Email: dan.harrison@leics.gov.uk



### Forest & Measham

#### Adam Tilbury CC

Reform UK

Tel: 07732 106722

Email: adam.tilbury@leics.gov.uk



### Castle Donington & Kegworth

#### Charles Pugsley CC

Reform UK

Tel: 0116 305 6296

Email: charles.pugsley@leics.gov.uk



### Ibstock & Appleby

#### Virge Richichi CC

Reform UK

Email: virge.richichi@leics.gov.uk



### Coalville North

#### Craig Smith CC

Conservative

Tel: 07519 359660

Email: craig.smith@leics.gov.uk



### Valley

#### Michael Squires CC

Reform UK

Tel: 0116 305 6167

Email: michael.squires@leics.gov.uk



### Coalville South

#### Paul Harrison CC

Reform UK

Tel: 0116 305 3022

Email: paul.harrison@leics.gov.uk



### Whitwick

#### Joseph Boam CC

Reform UK

Email: joseph.boam@leics.gov.uk



## Melton

### Belvoir

#### Bryan Lovegrove CC

Conservative

Tel: 01664 822335

Email: bryan.lovegrove@leics.gov.uk



### Melton East

#### Andrew Innes CC

Reform

Tel: 07940 957924

Email: andrew.innes@leics.gov.uk



### Melton West

#### Kerry Knight CC

Reform

Tel: 0116 305 5076

Email: kerry.knight@leics.gov.uk



### Melton Wolds

#### Joe Orson CC

Conservative

Tel: 07950 298383

Email: joe.orson@leics.gov.uk





## Charnwood

### Birstall

**Daniel Grimley CC**  
*Conservative*

Tel: 0116 305 5689  
Email: daniel.grimley@leics.gov.uk



### Quorn & Barrow

**Paul Rudkin CC**  
*Reform UK*

Tel: 07855 831 113  
Email: paul.rudkin@leics.gov.uk



### Bradgate

**Deborah Taylor CC**  
*Conservative*

Tel: 0116 305 4859  
Email: deborah.taylor@leics.gov.uk



### Rothley & Mountsorrel

**Linda Danks CC**  
*Reform UK*

Tel: 0116 305 5871  
Email: linda.danks@leics.gov.uk



### Loughborough East

**Jewel Miah CC**  
*Labour*

Tel: 0116 305 1023  
Email: jewel.miah@leics.gov.uk



### Shepshed

**Helen Butler CC**  
*Reform UK*

Tel: 0116 305 5386  
Email: helen.butler@leics.gov.uk



### Loughborough North

**Peter Morris CC**  
*Reform UK*

Tel: 07971 789280  
Email: peter.morris@leics.gov.uk



### Sileby & The Wolds

**Naomi Bottomley CC**  
*Green Party*

Tel: 0116 305 2650  
Email: naomi.bottomley@leics.gov.uk



### Loughborough North West

**Andrew Hamilton-Gray CC**  
*Reform UK*

Tel: 0116 305 6028  
Email: andrew.hamilton-gray@leics.gov.uk



### Syston Fosse

**James Poland CC**  
*Conservative*

Tel: 07764 966677  
Email: james.poland@leics.gov.uk



### Loughborough South

**Beverley Gray CC**  
*Labour*

Email: beverley.gray@leics.gov.uk



### Syston Ridgeway

**Simon Bradshaw CC**  
*Conservative*

Tel: 0116 305 4130  
Email: simon.bradshaw@leics.gov.uk



### Loughborough South West

**Richard Bailey CC**  
*Conservative*

Tel: 0116 305 6278  
Email: richard.bailey@leics.gov.uk



### Thurmaston Ridgemere

**Brenda Seaton CC**  
*Conservative*

Tel: 0116 2127686  
Email: brenda.seaton@leics.gov.uk



## Oadby and Wigston

### East Wigston

**Michael Charlesworth CC**  
*Independent*

Tel: 0116 288 4880  
Email: michael.charlesworth@leics.gov.uk



### Oadby

**Moinuddin Durrani CC**  
*Liberal Democrats*

Email: moinuddin.durrani@leics.gov.uk



### North Wigston

**Linda Broadley CC**  
*Liberal Democrats*

Tel: 0116 288 2743  
Email: linda.broadley@leics.gov.uk



**Dean Gamble CC**  
*Liberal Democrats*

Tel: 0116 2104 095  
Email: dean.gamble@leics.gov.uk



## Harborough

### Broughton Astley

**Bill Piper CC**  
*Reform UK*

Tel: 0116 305 2701  
Email: bill.piper@leics.gov.uk



### Bruntingthorpe

**Harrison Fowler CC**  
*Reform UK*

Email: harrison.fowler@leics.gov.uk



### Lutterworth

**Rosita Page CC**  
*Conservative*

Tel: 01455 209 240  
Email: rosita.page@leics.gov.uk



### Gartree

**Phil King CC**  
*Conservative*

Tel: 07795 156325  
Email: phil.king@leics.gov.uk



### Market Harborough East

**Dr Sarah Hill CC**  
*Liberal Democrats*

Tel: 07396 932984  
Email: sarah.hill@leics.gov.uk



### Launde

**Simon Galton CC**  
*Liberal Democrats*

Tel: 0116 243 2211  
Email: simon.galton@leics.gov.uk



**Market Harborough West & Foxton**  
**David Page CC**  
*Conservative*

Tel: 07379 412178  
Email: david.page@leics.gov.uk



## Hinckley and Bosworth

### Burbage

**Barry Walker CC**  
*Liberal Democrats*

Tel: 07977 456818  
Email: barry.walker@leics.gov.uk



### Hollycroft

**Ann Pendlebury CC**  
*Liberal Democrats*

Tel: 07859 960766  
Email: ann.pendlebury@leics.gov.uk



### De Montfort

**Michael Mullaney CC**  
*Liberal Democrats*

Tel: 07576 289910  
Email: michael.mullaney@leics.gov.uk



### Mallory

**Mark Bools CC**  
*Liberal Democrats*

Email: mark.bools@leics.gov.uk



### Earl Shilton

**Martin England CC**  
*Reform UK*

Tel: 07711 958063  
Email: martin.england@leics.gov.uk



### Market Bosworth

**Joshua Melen CC**  
*Conservative*

Email: joshua.melen@leics.gov.uk



### Grobby & Ratby

**Ozzy O'Shea JP CC**  
*Conservative*

Tel: 0116 239 4336  
Email: ozzy.o'shea@leics.gov.uk



**Markfield, Desford & Thornton**  
**Charles Whitford CC**  
*Reform UK*

Tel: 0116 305 6438  
Email: charles.whitford@leics.gov.uk



### St Marys

**Stuart Bray CC**  
*Liberal Democrats*

Tel: 0116 305 0984  
Email: stuart.bray@leics.gov.uk





# Summer Family Fun

Whatever the weather, there is something for everyone.

[leicestershire.gov.uk/whats-on](http://leicestershire.gov.uk/whats-on)



Book online at  
[centurytheatre.co.uk](http://centurytheatre.co.uk)  
or call the box office  
01530 278444  
Facebook: /CenturyTheatre  
Twitter: @century\_theatre

**Lyngo Theatre presents Jack and the Beanstalk by Marcello Chiarenza with music by Carlo 'Cialdo' Capelli**

**Fri 24 October, 12pm and 5pm,  
Tickets £8 - £12**

Patrick Lynch (from Cbeebies) tells the gripping story of Jack, who sells his cow for five magic beans and finds himself in the land above the clouds.

Winner of best show at the International Youth Arts Festival.

Adapted and performed by Patrick Lynch and design assisted by Elena Marini.

Scan for the latest shows at the Century Theatre:



THE **1620s** HOUSE & GARDEN at Donington le Heath



**Historic house owned by the Digby family with links to the Gunpowder Plot.**

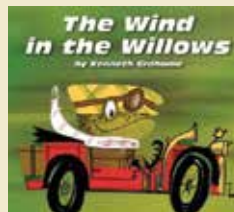
Manor Rd, Donington le Heath, LE67 2FW  
Facebook: 1620shouse.org.uk Tel: 01455 290429  
Open: Thurs to Sun and Bank Holidays  
10.30am-4.30pm.

**Pricing for outdoor theatre: Adult £20, child £12 (under 3s free), concession £16 (seniors, students) family (two adults, two children) £55. Pre-booking essential. A registered carer is free with full paying cared for person.**

**The Wind in the Willows**

**Fri 1 August, 6pm-8pm**

Award-winning Illyria celebrates Kenneth Grahame's timeless tale of friendship, laughter, the longing for home and the lure of adventure. Enjoy an authentic experience this summer where the story is set: in the great British outdoors.



**A Midsummer Night's Dream**

**Sat 30 August, 6.30pm-8.30pm**

Quantum Theatre presents a brand new production of Shakespeare's most enduringly popular play of love and intrigue, magic and celebration set on that most dangerous of nights when fairies are abroad and nothing is as it seems...

Seating (blankets or low-backed camping chairs) and picnics welcome at all of our outdoor theatre events.



**Beaumanor Hall**

Woodhouse, Leicestershire, LE12 8TX  
[beaumanorhall.co.uk](http://beaumanorhall.co.uk)  
Tel: 01509 890119

Twitter: @beaumanorhall

**Summer Fair**

**Special event**



**Sat 2 & Sun 3 August**

**10am-4pm**

**£3 entry (free for children aged 12 and under)**

Stalls from local makers, a sizzling BBQ and cooling refreshments. Gifts, foodie treats and items for the home, this fair offers a great day of unique shopping in beautiful historic surroundings.

Free parking.

**SUMMER Outdoor Activities**

at Beaumanor

**KIDS' EVENTS**

Exciting outdoor activities for children aged 7 to 14. From high ropes and canoeing to survival skills and climbing, there's something for every adventurer to enjoy. From £45 per child, per day. Childcare vouchers also accepted. Search 'Beaumanor' on [www.eventbrite.co.uk](http://www.eventbrite.co.uk) to book or call 01509 890119.

[beaumanorhall.co.uk/outdoor-activities](http://beaumanorhall.co.uk/outdoor-activities)



**Sutton Cheney, CV13 0AD**

[bosworthbattlefield.org.uk](http://bosworthbattlefield.org.uk)

Tel: 01455 290429

📷 @bosworthbattlefield

Open daily Nov to March,

10am-4pm and April to

October, 10am-5pm.

Café open 10.30am-3pm

Sat- Sun, 10am-3pm Sun.

## Bosworth DragonFest



**Sat 16 & Sun 17 August,**

**10am - 4pm, Adult £10,**

**Child £6, under 3s free.**

**Family tickets available**

**– see website for details.**

New this year, DragonFest is a family-friendly event with battle re-enactments, dragon crafts, arming a knight display and much more.

Themed on the Welsh dragon found on the standard of Henry Tudor, the event champions all things dragon - from legacy to fantasy.

Visitors can get hands-on, meet the reenactors or get close to birds of prey in a static display. There will be Dark Ages puppetry and storytelling, interactive Chinese dragon dancing, family activities, as well as the chance to meet Henry Tudor!

Event tickets include one-day admission to the award winning exhibition.

**Scan the  
QR code  
for tickets.**




## MELTON CARNEGIE MUSEUM

**Thorpe End, Melton Mowbray, LE13 1RB**

[meltonmuseum.org](http://meltonmuseum.org)

Tel: 0116 305 3860

Open: Tues to Sat, 10am-4.30pm.

FREE ENTRY.

### 25 Years On! - Revisiting The Millennium Collections

**Free EXHIBITION** Saturday 30 August  
– February 2026

In 2000, the Museum Service asked people to choose and donate an object that they thought would tell a story about life at the turn of the Millennium. Twenty-five years and a generation on, it's time to revisit some of those objects and stories to find out how much has changed and what aspects of everyday life in 2000 have now disappeared.

## Harborough Museum

Symington Building, Adam and Eve St,

Market Harborough, LE16 7LT

[harboroughmuseum.org.uk](http://harboroughmuseum.org.uk)

Tel: 0116 305 3627

Open: Tues to Fri, 10am-6pm

and Sat, 10am-4pm.

FREE ENTRY.

### Wonders of Nature Runs until 9 October 2025

**Free EXHIBITION** Reflecting the 2025 Summer Reading Challenge theme of 'Story Garden' the objects on display will inspire stories and creativity. From July to August, artist Jessica Hartshorn will be running free weekly workshops for children. Each week a new creative skill will be explored to contribute to a community art display that will blossom during the summer holidays. Visit our website for details.



## charnwood museum

**Granby St, Loughborough, LE11 3DU**

[charnwoodmuseum.co.uk](http://charnwoodmuseum.co.uk)

Tel: 01509 233754

Open: Weds to Sat, 10am-3pm.

FREE ENTRY.

### Cabaret Mechanical Marvels

**Until 7 September 2025**

Amazing exhibits from their internationally renowned collection, Cabaret Mechanical Marvels is an interactive journey into the world of automata. The exhibits weave science, technology, engineering, art and mathematics together.



## Enjoy our country parks this summer

**From Beacon Hill to  
Snibston Colliery Park,  
there's lots of activities  
happening across our  
parks this summer.**



Councillor  
Adam Tilbury,  
cabinet  
member for  
country parks  
said: "It gives  
us great pride

to have so many vibrant landscapes and beautifully kept green spaces here in Leicestershire. We know that being outdoors can deliver longer term health benefits and I'd encourage residents to make the most of any weather and go exploring."

Events include ArtSpace at Beacon Hill Country Park with another ambitious sculpture trail.

Artists will create a huge sculpture trail with over 25 sculptures and installations. Some works will be by individual artists and some work will be co-created with Charnwood based community groups.

Find out more about the sculpture trail at [artspace-lboro.co.uk](http://artspace-lboro.co.uk). For facilities and opening times at Beacon Hill Country Park and all our other country parks, visit [leicscountryparks.org.uk](http://leicscountryparks.org.uk)

📌 leicscountryparks

## YOUR LiBR@RY

KNOWLEDGE • DISCOVERY • ENTERTAINMENT

## Summer Reading Challenge

**Until 6 September 2025**

[leicestershire.gov.uk/src](http://leicestershire.gov.uk/src)

This summer, libraries invite children to step into the magical world of Story Garden, the 2025 Summer Reading Challenge theme. Discover new books, earn rewards, and enjoy nature-inspired events and activities. **Councillor Joseph Boam, cabinet member for libraries, said:** "This challenge is a no-nonsense way to keep kids learning, reading and thinking all summer long."





## SUPPORT FOR COMMUNITIES



# Money available for post-hospital support

Grants to help unpaid carers are available. The cash is available to anyone who has incurred extra costs since the person they support left hospital.

Since the scheme launched more than £23,000 has been awarded, with the average grant nearing £175 each, which can go towards cleaning, housework or a loss of income.

It has also helped us to identify over 100 carers who were previously unknown.

Councillor Joseph Boam, cabinet member for adults and



communities, said: "We've already helped so many people who didn't even realise they were carers, that's the power of this scheme. If you're unsure, reach out. We're here to back you."

If you can't do it online or need some help, you can call Voluntary Action South Leicestershire's Support for Carers team on 01858 468543 or email [maureen@supportforcarers.org](mailto:maureen@supportforcarers.org).

## Do you qualify?

If you answer 'yes' to all of these questions, contact Voluntary Action South Leicestershire to apply for the grant:

- Does the cared-for person live in Leicestershire or Leicester?
- Have they been discharged from hospital in the last two weeks?
- Have you incurred any additional costs linked to their discharge from hospital?

Find out more and apply online at [supportforcarers.org/hospital-discharge-grant](https://supportforcarers.org/hospital-discharge-grant) or scan the QR code.



# Join our panel

Our Adults and Communities engagement panel meets once a month and is made up of residents and carers who use our services. The panel aims to be representative of the Leicestershire community and is particularly looking for people aged over 65 to join and give their views.

Visit [leicestershirecommunities.org.uk/asc/engagement-advisory-panel](https://leicestershirecommunities.org.uk/asc/engagement-advisory-panel) for more information and to join.



**BOSWORTH**  
BATTLEFIELD HERITAGE CENTRE  
AND COUNTRY PARK

# Free entry for unpaid carers

**Bosworth Battlefield Heritage Centre and 1620s House and Garden in Donington le Heath are giving free standard admission to anyone with a valid carers passport identity card.**

Carers passports are an ID card for adults caring for a loved one, friend or neighbour aged 18 and over living in Leicestershire who could not manage without their support and they are not employed to look after them.

Tickets are valid for 12 months from the date of

issue. The deadline to apply is Sunday, 31 August.

Visit [supportforcarers.org/what-we-offer/carers-passport](https://supportforcarers.org/what-we-offer/carers-passport) or scan the QR code to apply online.

If you can't do it online or need some help, you can call Support for Carers on 01858 468543 or email [maureen@supportforcarers.org](mailto:maureen@supportforcarers.org).

Please quote FREEPASS 2025 when making the application.





# A decade in your local area



This summer marks 10 years of local area coordinators (LACs), who work closely with professionals, voluntary groups and the local community.

There are 30 LACs across Leicestershire, and they support people needing all types of help.

Working in specific areas across the county means they have detailed local knowledge and can point to professionals, as well as local organisations and groups, that might help you.

Councillor Michael Squires, cabinet member for health, said: "Our local



Michael Squires

area coordinators have supported thousands of people and groups over the last 10 years, and their great work is still going strong.

"If you want help and support, get in touch with the person in your local area to get the guidance you might need."

Find out more, including the contact details for your LAC by visiting [leicestershire.gov.uk/local-area-co-ordinators](https://leicestershire.gov.uk/local-area-co-ordinators) or scan the QR code.



**Q&A - Katie is a local area coordinator for the Blaby area.**

**Q: What is a day like for you?**

**KATIE:** "Being embedded in communities can mean we are visiting and supporting groups such as coffee mornings and dementia groups. If we are seeing a resident, this may mean seeing them in their own home, or wherever they feel most comfortable. Our focus is always on what the resident wants."

**Q: What do you enjoy the most?**

**KATIE:** "I love developing relationships with residents and seeing them develop the tools to grow and identify the changes they need to improve their lives."

**Q: How does the work make you feel?**

**KATIE:** "I hear from residents what a difference it has made having someone to 'walk alongside them', which is wonderful."

## Helping young people quit smoking and vaping

**We're working hard to reduce uptake of smoking and vaping across Leicestershire.**

Our QuitReady team have already visited many secondary schools and spoken to nearly 1,000 students to help them understand the risks.

One-to-one sessions with young people already smoking or vaping - and with their parents to support, when needed - is also part of the package.

One 15-year-old student who was given individual support by QuitReady said that stopping vaping improved not only his shortness of breath but he also learnt more about the dangers of illegal vapes.

A 14-year-old girl who was supported said her support helped her to concentrate more in class and now that she's stopped she 'doesn't want to go back to vaping.'

Councillor Michael Squires said: "Our one-to-one work with young people is already making a difference, with many quitting the habit. It's brilliant to read the feedback we've had."

**If you want help and support for you or someone you know, visit [quitready.co.uk](https://quitready.co.uk), call 0345 646 66 66 or text 'ready' to 66777. You can also scan the QR code.**



Local area coordinators from across the county







Iveshead School (pic credit Willmott Dixon)

## Growing schools for growing communities

### Investment programme boosts student places.

Nearly 850 extra secondary school places will be available from August in a £30m investment.

We're working to meet the demands of a growing population by working with academies to expand where most appropriate. For example, 450 more places will be available at Iveshead School in Shepshed, featuring a whole new block with sixth form study, specialist spaces and improved classrooms.

Hastings High School in Burbage will have 200 more spaces including a new sports hall, eight new classrooms and science lab.

Just under 200 places in Redmoor

have been added with a project that incorporates a brand-new science block, new kitchen and a bigger dining space.

Nearly £8m of the money invested has come from Section 106 contributions from housing developers.

Councillor Harrison Fowler, cabinet member for growth, said: "We have



Harrison Fowler

been working tirelessly to strike the right balance between increasing the county's secondary education capacity and ensuring that any funds spent are diligently allocated. This gives the people of Leicestershire the most sustainable outcome."

## Good luck

A message from cabinet member Councillor Charles Pugsley.



Thousands of our students in Leicestershire are just weeks away from learning their

GCSE, BTEC and A Level results, and I'd like to wish everyone who is about to find out their grades the very best of luck.

"I know just how much hard work will have been put in by the near 8,000 Year 11 students, and almost 2,500 Year 13s. I wish them every success with their results."



Councillor Charles Pugsley and Jane Moore, Director of Children and Family Services



## Young carer help

**Do you know of anyone, or are you yourself, under 18 and helping someone at home because they can't fully look after themselves?**

They might be a young carer. Support is available for anyone and an assessment will identify the help needed. This can include someone helping to wash and dress or helping with the housework.

Young carers can also get access to a 'passport' to help GPs or school staff to understand your needs.

Find out more by visiting [leicestershire.gov.uk/young-carers](https://leicestershire.gov.uk/young-carers), scan the QR code or call 0116 305 0005.







## Supporting local businesses as vape ban starts

### We teamed up with traders to help them prepare for a ban on single-use disposable vapes.

More than five million disposable vapes were estimated to have been thrown away each week before the ban came into force in June.

Throwing away a disposable vape is a fire risk due to the battery inside. This can cause issues with bin collections or at our recycling and household waste sites.

In the run up to June, our Trading Standards team contacted around 400 independent retailers who sell vapes, to highlight the change in the law and help them get ready.

Councillor Virge Richichi, cabinet member for trading standards, said: "We've been working hard to help make sure retailers don't fall foul of the new laws in place.

"It's really important for us to protect children from the harm that vaping can cause, as well as the litter and fire risks posed at our waste sites."

Councillor Virge Richichi with vapes previously seized by Trading Standards



Trading Standards will be working to enforce the rules, which can see retailers face a hefty fine if they're still selling single-use disposable vapes.

Don't forget – if you need to discard any leftover disposable or reusable vapes, please treat them as you would getting rid of used batteries or take them to your nearest tip to be appropriately recycled. Batteries and vapes can cause fires if not disposed of correctly.

### TRADING STANDARDS

If you're a business needing advice or support, visit [leicestershire.gov.uk/trading-standards](https://www.leicestershire.gov.uk/trading-standards) or scan the QR Code.

You can also visit [www.businesscompanion.info](https://www.businesscompanion.info) which is a one-stop-shop on trading standards law for businesses



## Don't get burned this summer

**We've already been enjoying plenty of the warm summer weather, and with more to come, it's worth checking your sunscreen and sunglasses.**

Trading Standards often intercept and seize cosmetics at ports throughout the year. These products include sunscreen which when inspected, is shown to be fake or has a protection level (known as SPF) lower than advertised.

Not only will this not protect you from the sun, but it might also have unknown ingredients that can cause issues such as skin irritation.

To make sure you're getting what you pay for, make sure you:

- Buy from reputable sources
- Be wary of people selling "cheap" branded sunscreen online, such as Facebook Marketplace

You should also check the expiry date of any sunscreen you buy to make sure it's still effective. If you use it after the date, it might not work.

Don't forget to check your sunglasses, too. All sunglasses should have the CE or UKCA European safety standard mark. Counterfeit and some cheaply imported sunglasses often don't offer the level of advertised protection.



From 1 September you  
can apply for your child's  
school place for the  
2026/27 academic year



Secondary  
school application  
closing date

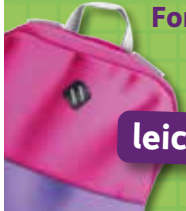
Primary and infant  
to junior school  
application closing date

Friday  
31 October 2025

Thursday  
15 January 2026

For hints and tips about the process,  
information on Leicestershire  
schools and to apply, visit

[leicestershire.gov.uk/admissions](https://leicestershire.gov.uk/admissions)



Book your child's  
holiday club place  
this summer



**FREE holiday sessions**  
at venues across Leicestershire  
for children aged 5 – 16  
receiving benefits related  
free school meals.

Sessions offer a variety of activities  
including sports, art and crafts,  
music, drama and more, PLUS a  
nutritious meal.



Visit our website  
to choose your  
HAF provider.



Walk, wheel or cycle  
around your local park  
to find the dino trail  
markers

Is your park taking  
part? Find out here  
and get ready to hunt  
for dinosaurs



Find the  
dinosaurs  
from  
16 July

For more information please visit  
[choosehowyoumove.co.uk/dino-t-reks](https://choosehowyoumove.co.uk/dino-t-reks)



Don't let your  
**Recycling**  
go to **WASTE**



Never put batteries in your  
general waste or recycling bins



Nappies are rubbish,  
not recycling



Rinse, dry and recycle  
your containers



Textiles should go to a  
clothes bank, not in the bin

[www.lesswaste.org.uk/recycle](https://www.lesswaste.org.uk/recycle)