

THE LEICESTERSHIRE COUNTY COUNCIL  
(LUTTERWORTH SOUTHERN BYPASS (A4303),  
COVENTRY ROAD (A4303), LUTTERWORTH ROAD (A4303),  
IN THE TOWN OF LUTTERWORTH AND THE DISTRICT OF HARBOROUGH)  
(IMPOSITION OF A 40MPH SPEED LIMIT) ORDER 2026

The Leicestershire County Council ("the Council") in exercise of its powers under Sections 5, 84 and Part IV of Schedule 9 of the Road Traffic Regulation Act 1984 ("the Act") and of all other enabling powers, after consultation with the Chief Officer of Police in accordance with Part III of Schedule 9 to the Act, hereby makes the following Order:-

1. This Order may be cited as "The Leicestershire County Council (Lutterworth Southern Bypass (A4303), Coventry Road (A4303), Lutterworth Road (A4303), in the town of Lutterworth, District of Harborough) (Imposition of a 40 MPH Speed Limit) Order 2026"
2. The Order shall come into force on the seventh day of April 2026
3. The Order referred to in Schedule 1 is hereby revoked in full
4. No person shall drive any motor vehicle at a speed exceeding 40 MPH on the lengths of road as specified in Schedule 2 to this Order.
5. The plans annexed to this Order and marked drawing numbers TMI.003/T1/1/B-1 and TMI.003/T1/1/B-2 are for identification purposes only.

## SCHEDULE 1

### REVOCATION IN FULL

#### THE LEICESTERSHIRE COUNTY COUNCIL (A4303, LUTTERWORTH ROAD, LUTTERWORTH, DISTRICT OF HARBOROUGH) (IMPOSITION OF 40MPH SPEED LIMIT) ORDER 2018

Both sides from its junction with the A426 Rugby Road in an easterly direction for a distance of 380 metres.

## SCHEDULE 2

### IMPOSITION OF A 40MPH SPEED LIMIT

#### Lutterworth Southern Bypass (A4303), Lutterworth (Eastbound Carriageway)

From its circulatory junction with A4303/Coventry Road/Fairacres Coventry Road, Lutterworth to a point 165 metres east of its circulatory junction with A4303/Coventry Road/Fairacres Coventry Road including the circulatory carriageway.

#### Lutterworth Southern Bypass (A4303), Lutterworth (Westbound Carriageway)

From to a point 265 metres east of its circulatory junction with A4303/Coventry Road/Fairacres Coventry Road, Lutterworth. to its circulatory junction with A4303/Coventry Road/Fairacres Coventry Road, Lutterworth

#### Coventry Road (A4303) Lutterworth (Eastbound Carriageway)

From a point 170 metres west of its circulatory junction with A4303/Coventry Road/Fairacres Coventry Road, Lutterworth to its circulatory junction with A4303/Coventry Road/Fairacres Coventry Road, Lutterworth, including the circulatory carriageway for its entire length.

#### Lutterworth Road (A4303), Lutterworth (Eastbound Carriageway)

From its circulatory junction with Rugby Road (A426)/Lutterworth Road (A4303), Lutterworth to a point 40 metres west of its circulatory junction with the M1 Junction 20.

#### Lutterworth Road (A4303), Lutterworth (Westbound Carriageway)

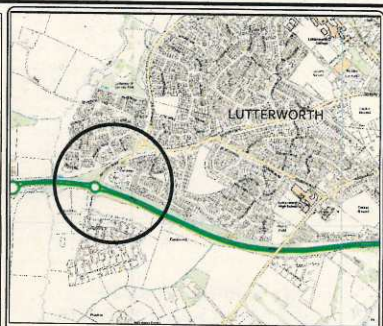
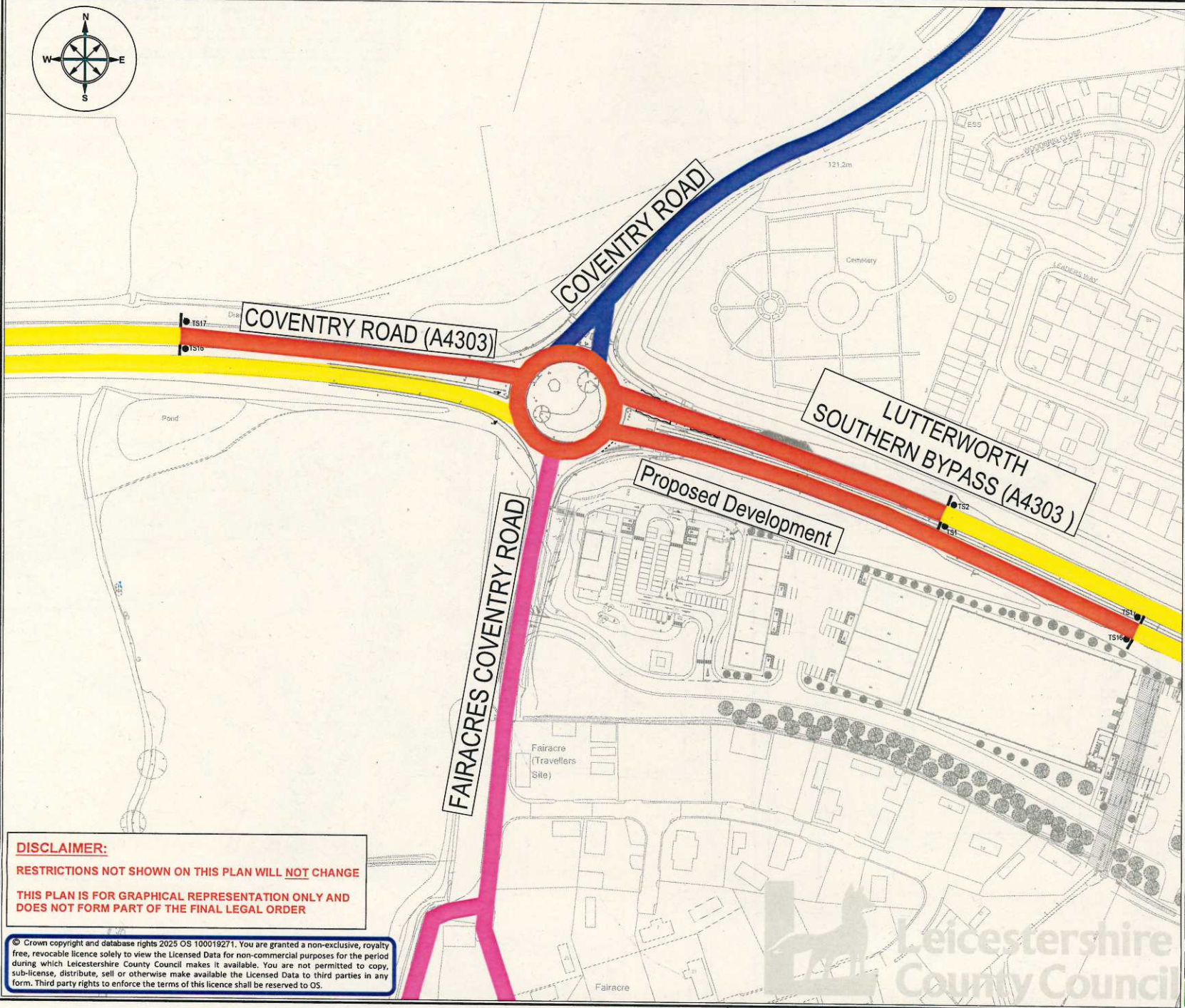
From a point 40 metres west of its circulatory junction with the M1 Junction 20 Lutterworth to its circulatory junction with Rugby Road (A426)/Lutterworth Road (A4303), Lutterworth.

THE COMMON SEAL of THE LEICESTERSHIRE )  
COUNTY COUNCIL was hereunto affixed )  
This 26<sup>th</sup> day of March 2026 )  
in the presence of :- )

*Robert Laff*



419028



**KEY**

- PROPOSED 40MPH SPEED LIMIT
- EXISTING 40MPH SPEED LIMIT
- 30MPH SPEED LIMIT BY VIRTUE OF STREET LIGHTING
- EXISTING NATIONAL SPEED LIMIT



ENVIRONMENT AND  
TRANSPORT DEPARTMENT

ANN CARRUTHERS  
DIRECTOR

**NETWORK MANAGEMENT  
DEVELOPMENT & GROWTH**

LUTTERWORTH SOUTHERN BYPASS (A4303)  
COVENTRY ROAD (A4303), LUTTERWORTH

TITLE:

**PROPOSED 40MPH SPEED LIMIT  
CONSULTATION PLAN**

DRAWING NUMBER		SCALE	
TMI.003/T1/1/B-1		NTS	
PREPARED BY:	P SANDHU	DATE:	JULY 2025
CHECKED BY:	L MEASURES	SIZE:	A3
APPROVED BY:	G NEAT	CORR. FILE:	

COUNTY HALL \* GLENFIELD \* LEICESTER \* LE3 8ST  
Tel: 01163 050001

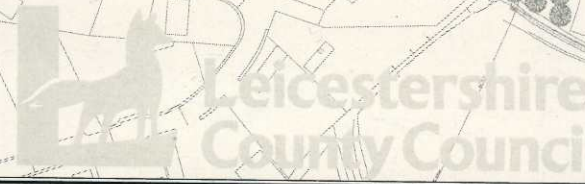
[www.leicestershire.gov.uk](http://www.leicestershire.gov.uk)

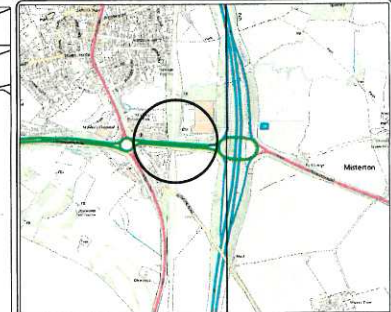
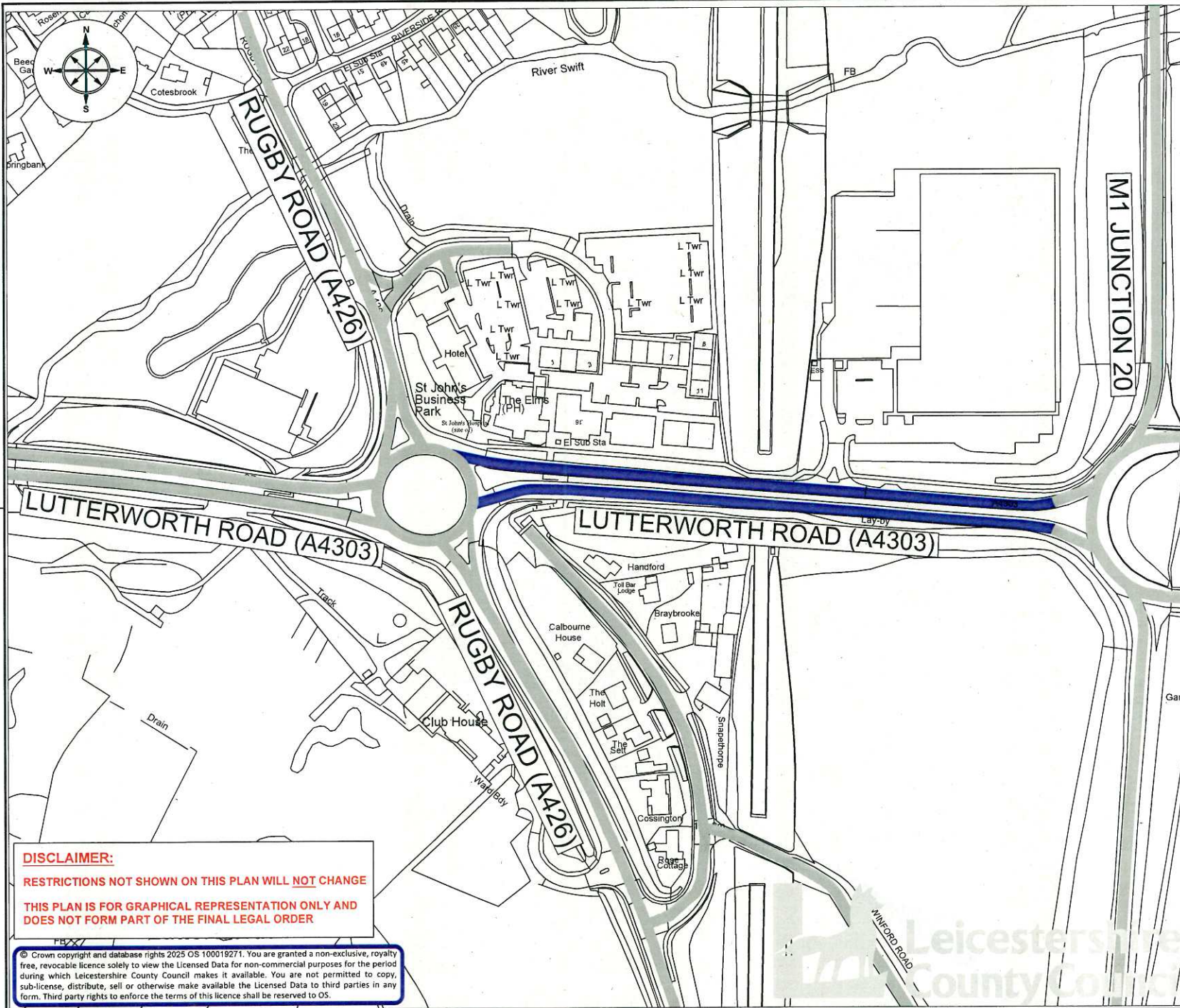
**DISCLAIMER:**

RESTRICTIONS NOT SHOWN ON THIS PLAN WILL NOT CHANGE

THIS PLAN IS FOR GRAPHICAL REPRESENTATION ONLY AND  
DOES NOT FORM PART OF THE FINAL LEGAL ORDER

© Crown copyright and database rights 2025 OS 100019271. You are granted a non-exclusive, royalty free, revocable licence solely to view the Licensed Data for non-commercial purposes for the period during which Leicestershire County Council makes it available. You are not permitted to copy, sub-license, distribute, sell or otherwise make available the Licensed Data to third parties in any form. Third party rights to enforce the terms of this licence shall be reserved to OS.





**KEY**

- EXISTING 40MPH SPEED LIMIT
- EXISTING SPEED LIMITS



**ENVIRONMENT AND  
TRANSPORT DEPARTMENT**

**ANN CARRUTHERS  
DIRECTOR**

**NETWORK MANAGEMENT  
DEVELOPMENT & GROWTH**

**LUTTERWORTH ROAD (A4303)  
LUTTERWORTH**

TITLE:  
**EXISTING 40MPH SPEED LIMIT  
CONSULTATION PLAN**

DRAWING NUMBER	SCALE
<b>TMI.003/T1/1/B-2</b>	<b>NTS</b>
PREPARED BY: P SANDHU	DATE: JULY 2025
CHECKED BY: L MEASURES	SIZE: A3
APPROVED BY: G NEAT	CORR. FILE:

**COUNTY HALL \* GLENFIELD \* LEICESTER \* LE3 8ST**  
Tel: 01163 050001

[www.leicestershire.gov.uk](http://www.leicestershire.gov.uk)

**DISCLAIMER:**  
RESTRICTIONS NOT SHOWN ON THIS PLAN WILL NOT CHANGE  
THIS PLAN IS FOR GRAPHICAL REPRESENTATION ONLY AND  
DOES NOT FORM PART OF THE FINAL LEGAL ORDER

© Crown copyright and database rights 2025 OS 100019271. You are granted a non-exclusive, royalty free, revocable licence solely to view the Licensed Data for non-commercial purposes for the period during which Leicestershire County Council makes it available. You are not permitted to copy, sub-license, distribute, sell or otherwise make available the Licensed Data to third parties in any form. Third party rights to enforce the terms of this licence shall be reserved to OS.