

School Places Strategy 2026 - 2031 Primary School Planning Area Data – Hinckley & Bosworth

Contents

Planning Area Data – Barlestone Verdon Primary	2
Planning Area Data – Barwell & Earl Shilton Primary	5
Planning Area Data – Congerstone Primary	8
Planning Area Data – Desford Primary	10
Planning Area Data – Higham Stoke Golding Primary	12
Planning Area Data – Hinckley & Burbage Primary	15
Planning Area Data – Linford Groby Kirby Ratby Primary	19
Planning Area Data – Market Bosworth Primary	22
Planning Area Data – Markfield Stanton Thornton Primary	24
Planning Area Data – Sheepy Primary	27
Planning Area Data – Witherley Primary	29

Planning Area Data – Barlestone Verdon Primary

Planning area name:

Barlestone Verdon Primary

Number:

855 0220

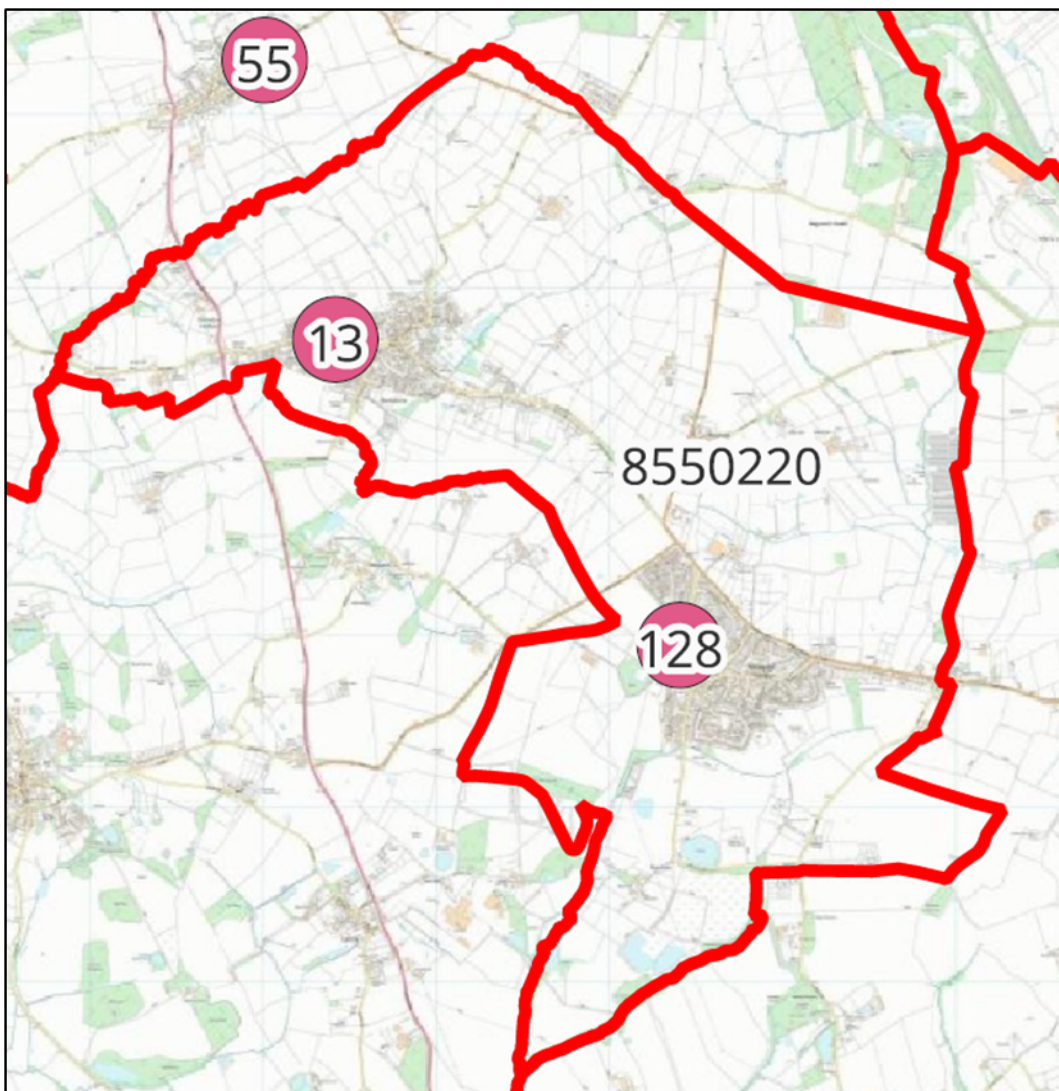
District Area:

Hinckley & Bosworth Borough Council

Schools:

2

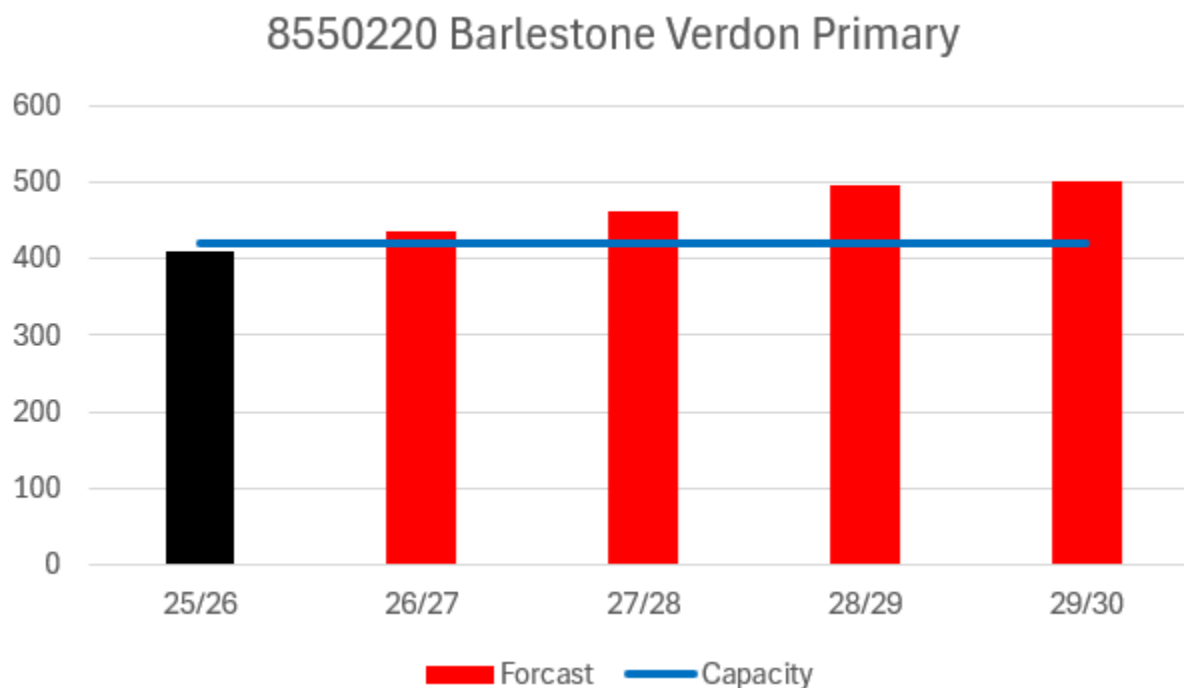
There are 2 primary schools in the Barlestone Verdon Primary planning area. 1 is a maintained school and 1 is an academy.



A map showing the Barlestone Verdon Primary planning area. There are 2 primary schools. The table below provides the map reference numbers alongside relevant school names.

Table 1 showing map number and school name

Map Number and School Name	DfE Number	Status
13 - Barlestone Church of England Primary School	855 2013	Academy Convertor
128 - Newbold Verdon Primary School	855 2078	Community School



A chart showing forecast pupil numbers for 2025-2030 against a fixed capacity line. Capacity remains at 420 each year. Full data is provided in the table below.

Table 2 provides a full breakdown of the data presented in the chart above, including totals and school-level breakdowns.

Forecast Data	AN	Cap	25/26	26/27	27/28	28/29	29/30
Barlestone Church of England Primary School	30	210	191	197	198	210	210
Newbold Verdon Primary School	30	210	220	238	264	286	291
Total:	60	420	411	435	462	496	501

Current Overview

2013 – Barlestone Church of England Primary School – Birth rate slightly below average and consistent. Fairly significant level of new housing development expected in the catchment area. 22% of pupils from out of catchment, but mainly from Newbold Verdon.

2078 – Newbold Verdon Primary School – Temporarily reduced PAN to 30, housing gain is expected within the area so will need to increase PAN when pupils start to come through. 78% NOR from within catchment.

Future Actions

2078 – Newbold Verdon Primary School – have temporarily reduced PAN from 45 to 30 to help with class structure, organisation and financial pressures. The reduction has a caveat that as soon as births / numbers from housing increased the LA would seek to revert back to 45.

Overall, there is capacity within the planning area to cope with projected pupil forecasts and housing growth.

Planning Area Data – Barwell & Earl Shilton Primary

Planning area name:

Barwell & Earl Shilton Primary

Number:

855 0221

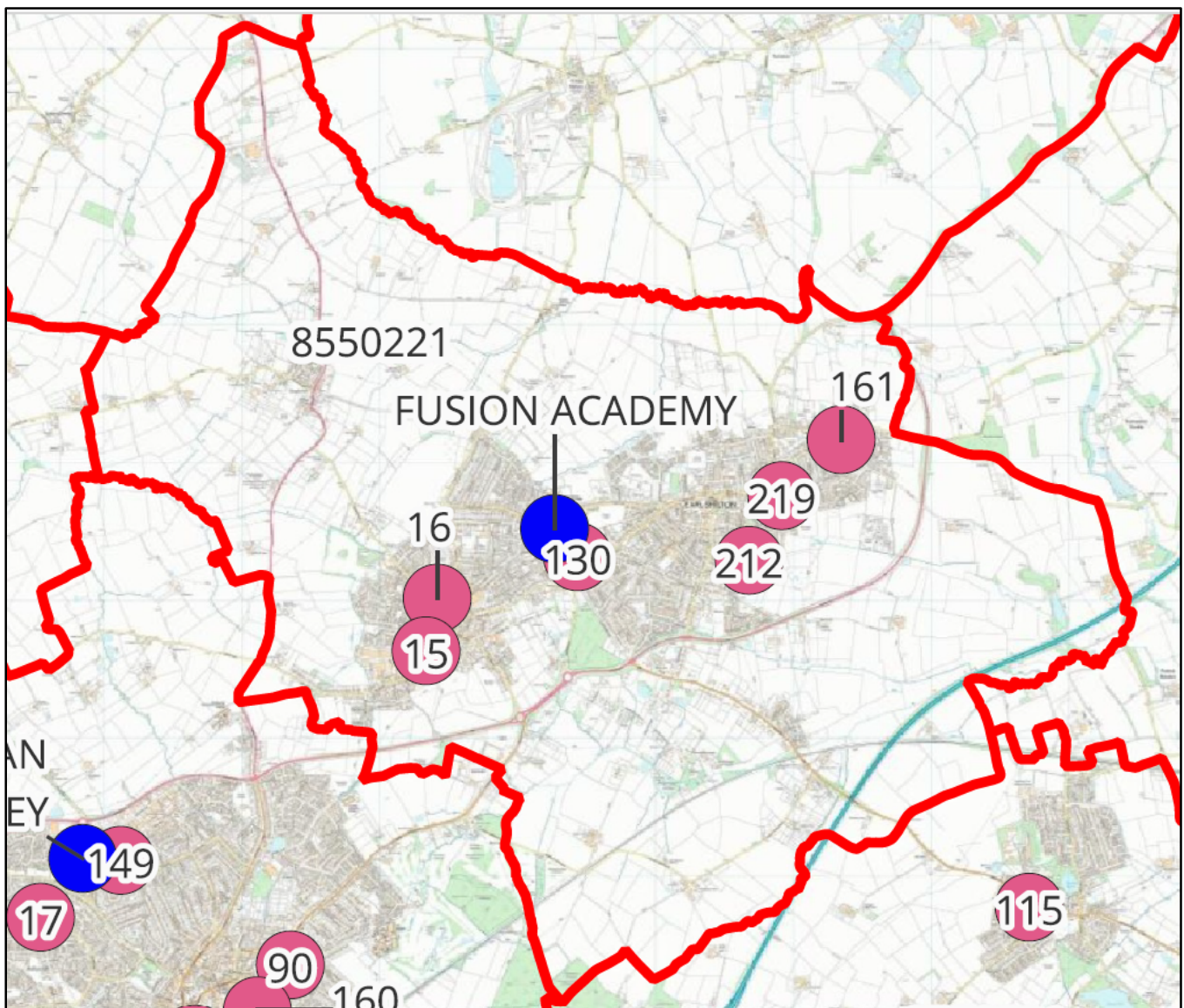
District Area:

Hinckley & Bosworth Borough Council

Schools:

6

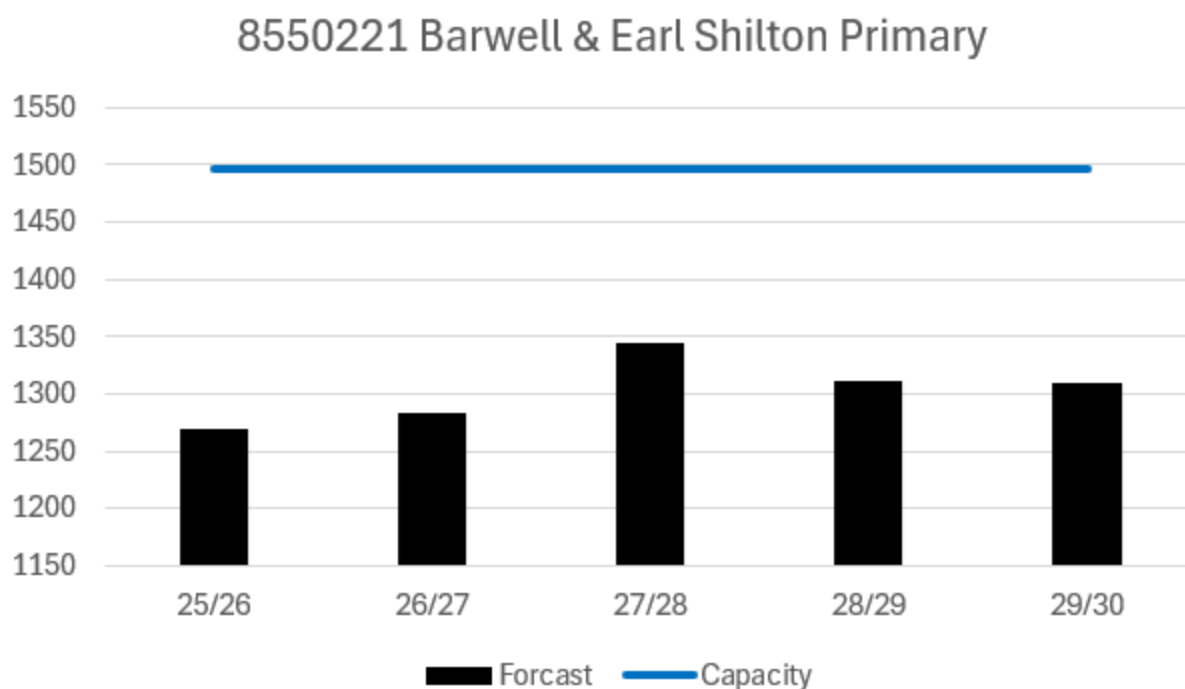
There are 4 primary schools in the Barwell & Earl Shilton Primary planning area. In addition to this there is 1 infant school and 1 junior school. 1 is a maintained school and 5 are academies.



A map showing the Barwell & Earl Shilton Primary planning area. There are 6 primary schools. The table below provides the map reference numbers alongside relevant school names.

Table 3 showing map number and school name

School Name	DfE Number	Status
15 - Barwell Church of England Academy	855 3009	Academy Converter
16 - Barwell Infant School	855 2049	Community School
130 - Newlands Community Primary School	855 2180	Community School
161 - Saint Peters Catholic Voluntary Academy	855 3335	Academy Converter
212 - Townlands Church of England Primary School	855 3213	Voluntary Controlled School
219 - St Simon and St Jude CofE Primary School	855 2011	Academy Converter



A chart showing forecast pupil numbers for 2025-2030 against a fixed capacity line. Capacity remains at 1,496 each year. Full data is provided in the table below.

Table 4 provides a full breakdown of the data presented in the chart above, including totals and school-level breakdowns.

Forecast Data	AN	Cap	25/26	26/27	27/28	28/29	29/30
Barwell Church of England Academy	67	270	230	225	234	232	231
Barwell Infant School	60	176	149	147	138	154	153
Newlands Community Primary School	60	420	290	285	284	273	267
Saint Peters Catholic Voluntary Academy	30	210	196	195	188	184	180
Townlands Church of England Primary School	30	210	257	250	240	241	245
St Simon and St Jude CofE Primary School	30	210	147	182	216	228	233
Total:	277	1,496	1,269	1,284	1,345	1,312	1,309

Current Overview

Some surplus places forecast across planning area. Large scale housing developments planned within the area (Over 4000 new houses in total). Some movement on Earl Shilton SUE with some S106 agreements in place.

2011 – St Simon and St Jude CofE Primary School – Average births. 70% NOR from within catchment. Significant levels of new housing planned in the area, keep on watching brief, could be a potential school to expand if needed.

2049 – Barwell Infant School – Below average birth rate. 80% NOR from within catchment. Forecast to remain full.

3009 – Barwell Church of England Academy – Average feeder cohort sizes. 68% NOR from within catchment area. Forecast to have around 15% surplus places.

2180 – Newlands Community Primary School – Average birth rate but slightly lower for 2025 entry. Low levels of in catchment attendance, 66% NOR from outside the catchment area. Forecast to have low numbers, showing 20-25% surplus spaces.

3213 – Townlands Church of England Primary School – Births below average. 60% NOR from outside the catchment area. Significant amounts of surplus spaces (around 45%) forecast.

3335 – St Peters Catholic Voluntary Academy – 10-15% surplus spaces forecast over the duration of the forecast.

Future Actions

2011 – St Simon and St Jude CofE Primary School – Keep on watching brief. Surplus capacity in nearby schools.

3213 – Townlands Church of England Primary School – Keep on watching brief, temporarily reducing PAN to 30 due to low numbers from August 2026.

Overall, there is capacity within the planning area to cope with projected pupil forecasts and housing growth. The Planning Area will be kept under review as further development applications expected through Local Plan. New primary schools will be built as part of the SUE developments.

Planning Area Data – Congerstone Primary

Planning area name:

Congerstone Primary

Number:

855 0230

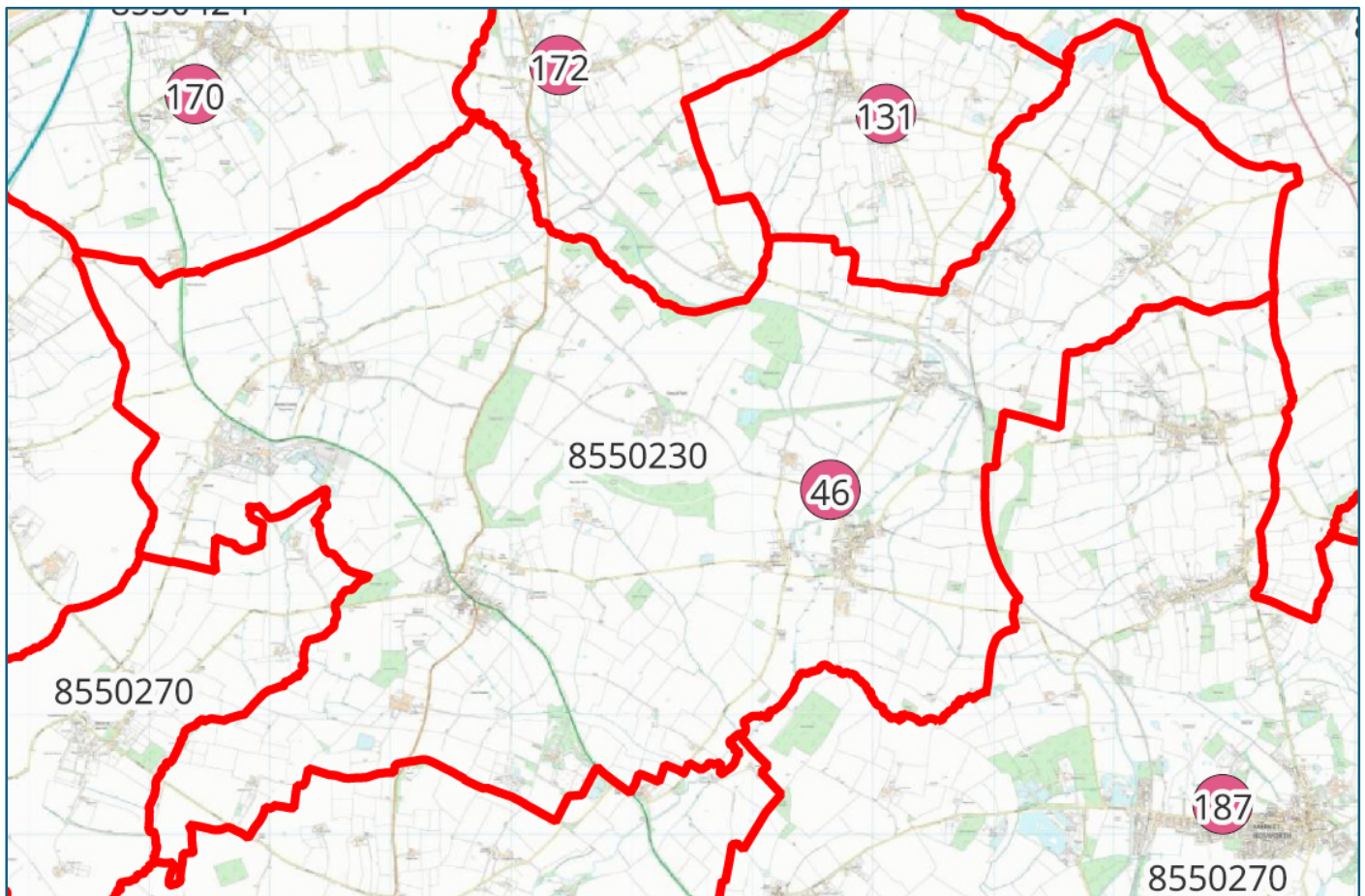
District Area:

Hinckley & Bosworth Borough Council

Schools:

1

There is 1 primary school in the Congerstone Primary planning area, it is a maintained school.

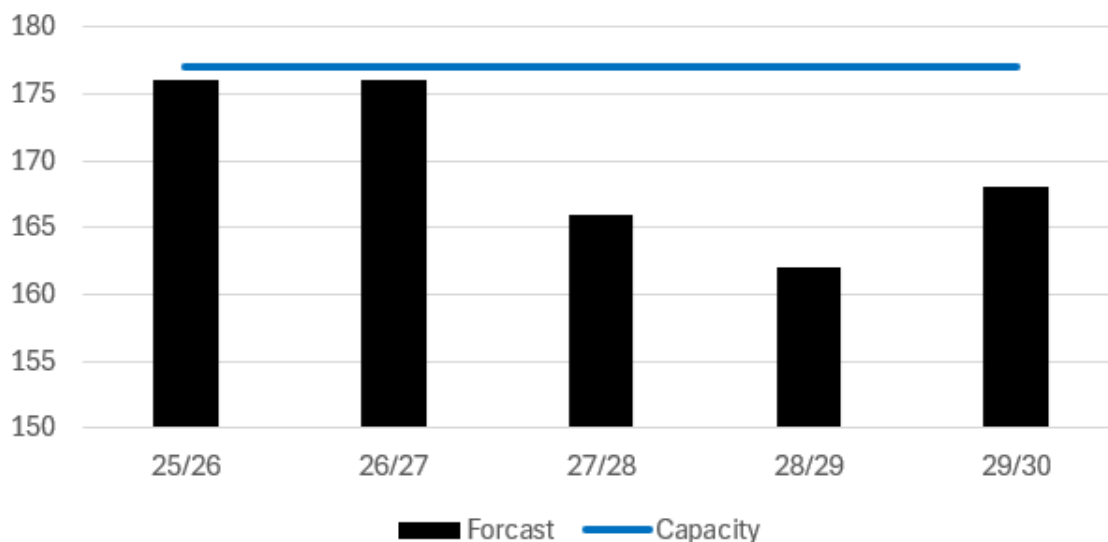


A map showing the Congerstone Primary planning area. There is 1 primary school. The table below provides the map reference numbers alongside relevant school names.

Table 5 showing map number and school name

School Name	DfE Number	Status
46 - Congerstone Primary School	855 2090	Community School

8550230 Congerstone Primary



A chart showing forecast pupil numbers for 2025-2030 against a fixed capacity line. Capacity remains at 177 each year. Full data is provided in the table below.

Table 6 provides a full breakdown of the data presented in the chart above, including totals and school-level breakdowns.

Forecast Data	AN	Cap	25/26	26/27	27/28	28/29	29/30
Congerstone Primary School	28	177	176	176	166	162	168
Total:	28	177	176	176	166	162	168

Current Overview

2090 – Congerstone Primary School. Stable births, low levels of new housing. Only 42% NOR come from in catchment, 58% NOR from out of catchment (45% from 3334 St Peter's Church of England Primary Academy).

Future Actions

Overall, there is capacity within the planning area to cope with projected pupil forecasts and housing growth. Catchment push back will be used if needed, capacity in planning area 855 0270.

Planning Area Data – Desford Primary

Planning area name:

Desford Primary

Number:

855 0200

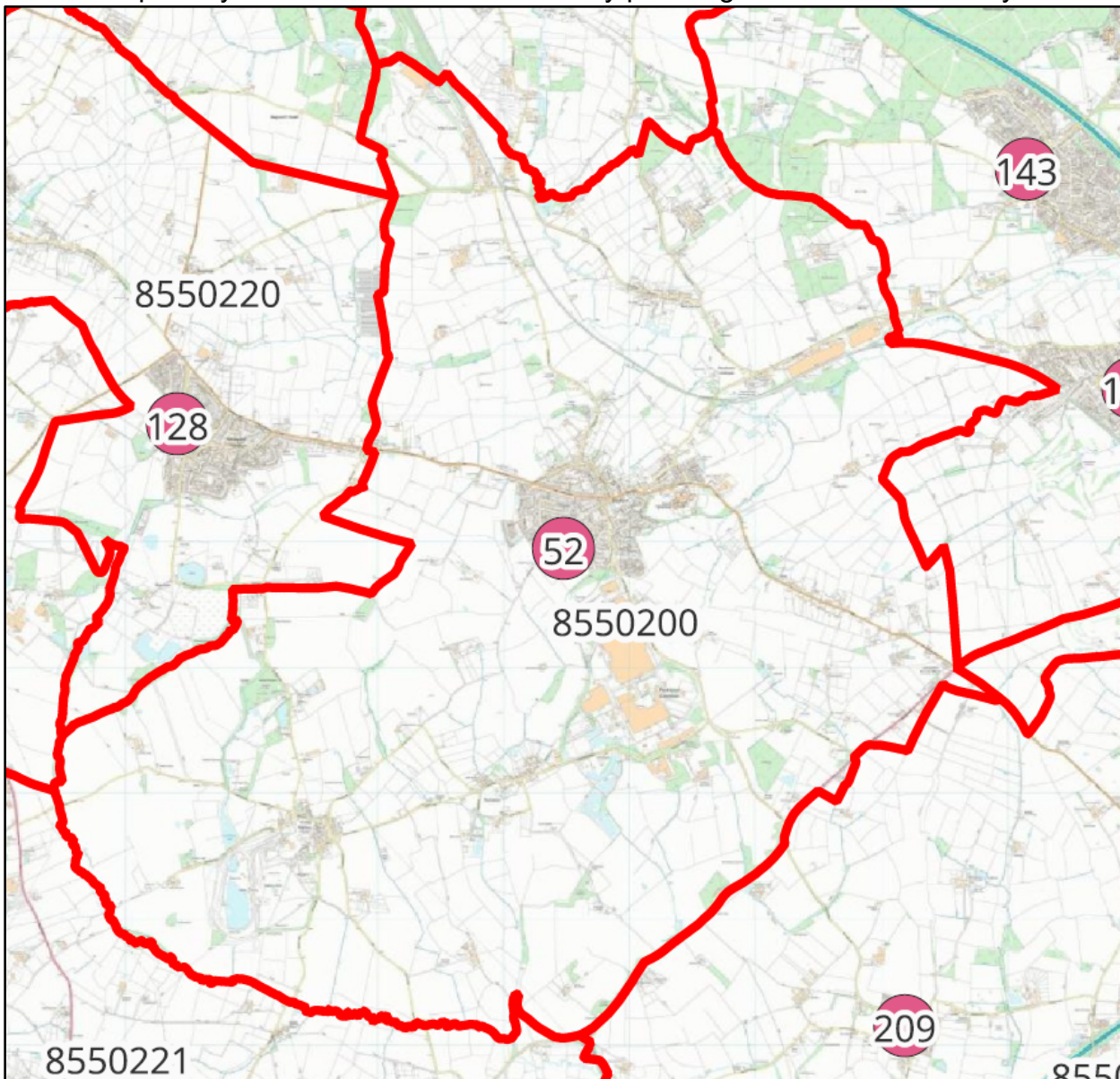
District Area:

Hinckley & Bosworth Borough Council

Schools:

1

There is 1 primary school in the Desford Primary planning area it is an academy.

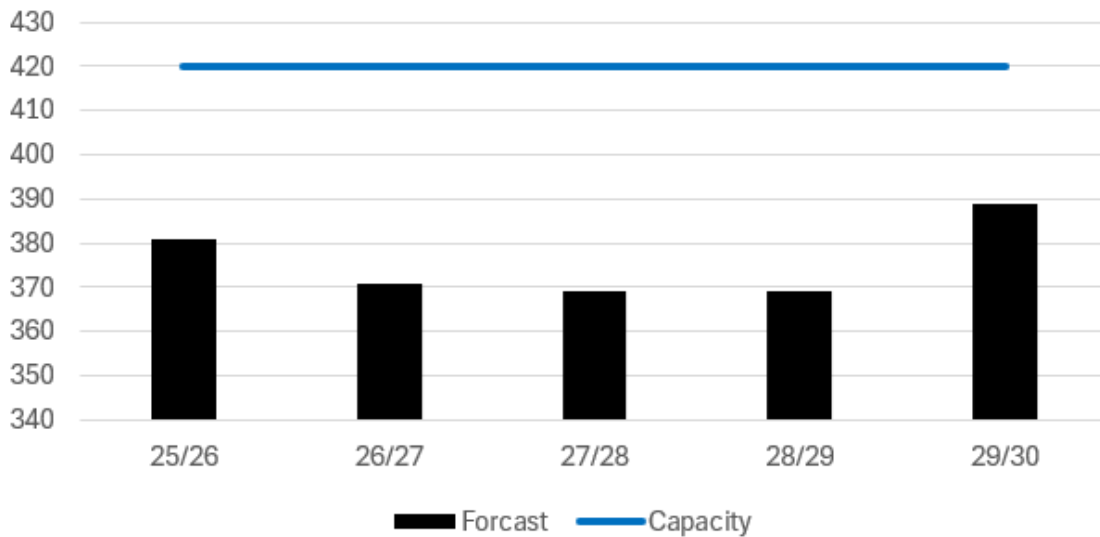


A map showing the Desford Primary planning area. There is 1 school. The table below provides the map reference numbers alongside relevant school names.

Table 7 showing map number and school name

School Name	DfE Number	Status
52 - Desford Community Primary School	855 2032	Academy Converter

8550200 Desford Primary



A chart showing forecast pupil numbers for 2025-2030 against a fixed capacity line. Capacity remains at 420 each year. Full data is provided in the table below.

Table 8 provides a full breakdown of the data presented in the chart above, including totals and school-level breakdowns.

Forecast Data	AN	Cap	25/26	26/27	27/28	28/29	29/30
Desford Community Primary School	60	420	381	371	369	369	389
Total:	60	420	381	371	369	369	389

Current Overview

2032 Desford Primary School - Births around average but consistent. Significant levels of new housing ongoing within the planning area, school has potential to be expanded to 3FE if required in future. School has high levels of in catchment attendance (88%).

Future Actions

Planning area to be kept under review alongside Barlestone Verdon Primary (855 0220).

Planning Area Data – Higham Stoke Golding Primary

Planning area name:

Higham Stoke Golding Primary

Number:

855 0421

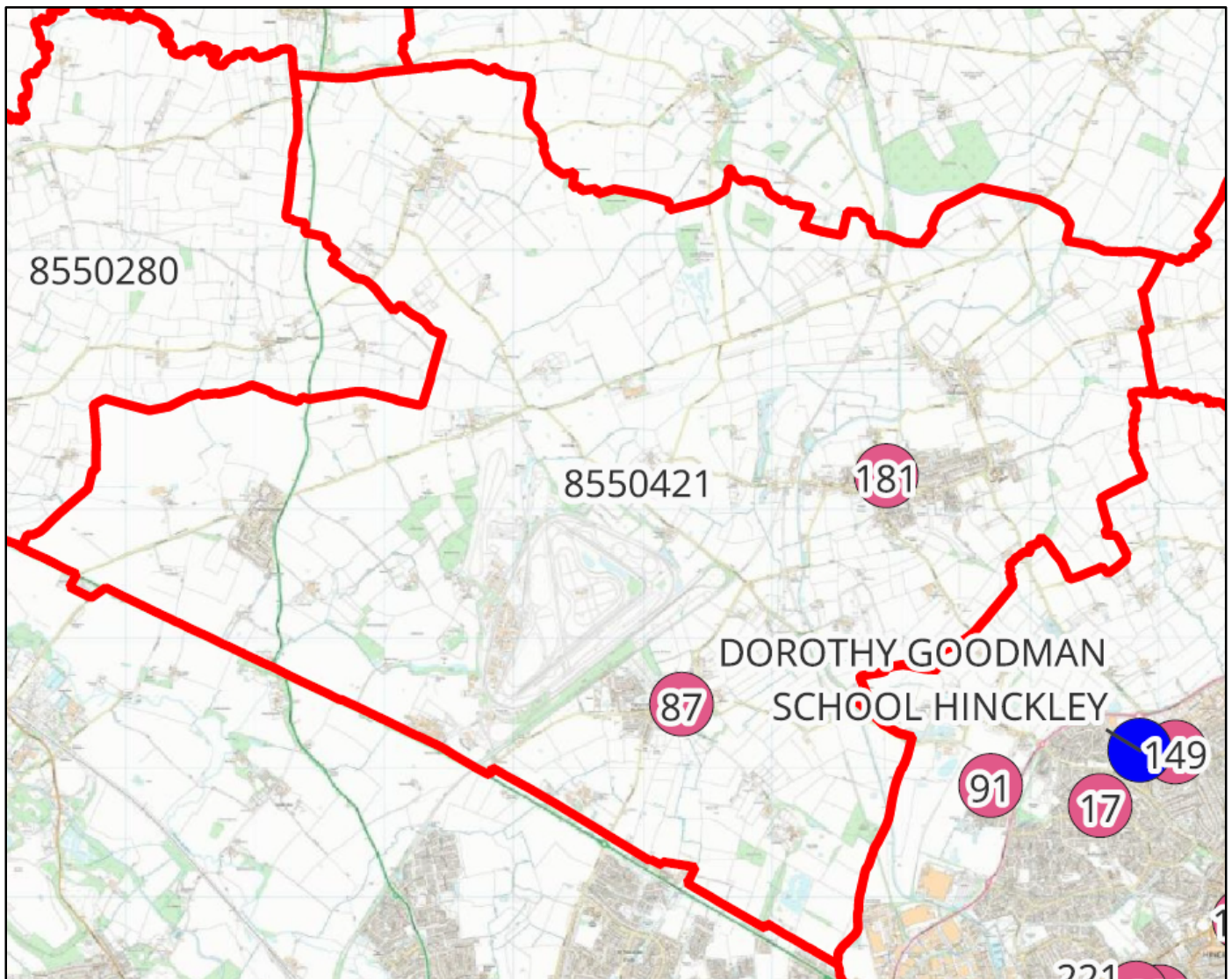
District Area:

Hinckley & Bosworth Borough Council

Schools:

2

There are 2 primary schools in the Higham Stoke Golding Primary planning area, both are academies.

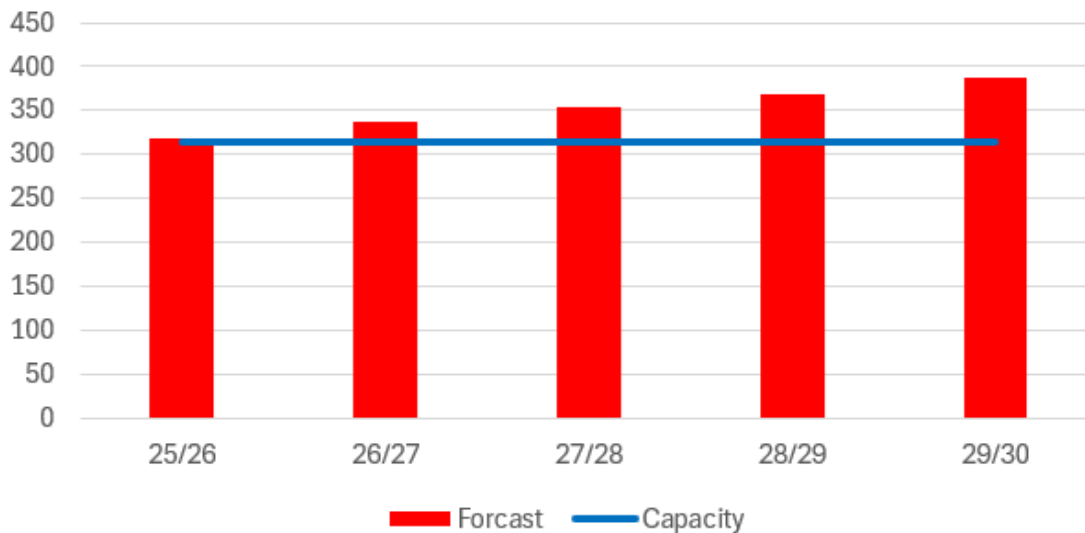


A map showing the Higham Stoke Golding Primary planning area. There are 2 schools. The table below provides the map reference numbers alongside relevant school names.

Table 9 showing map number and school name

School Name	DfE Number	Status
87 - Higham-on-the-Hill Church of England Primary School	855 3041	Academy Converter
181 - St Margaret's Church of England Primary School Stoke Golding	855 3319	Academy Converter

8550421 Higham Stoke Golding Primary



A chart showing forecast pupil numbers for 2025-2030 against a fixed capacity line. Capacity remains at 315 each year. Full data is provided in the table below.

Table 10 provides a full breakdown of the data presented in the chart above, including totals and school-level breakdowns.

Forecast Data	AN	Cap	25/26	26/27	27/28	28/29	29/30
Higham-on-the-Hill Church of England Primary School	15	105	89	103	107	112	122
St Margaret's Church of England Primary School Stoke Golding	30	210	229	235	247	256	266
Total:	45	315	318	338	354	368	388

Current Overview

3041 – Higham-on-the-Hill CE Primary. Below average birth rate. Some small housing developments are planned within the catchment area. 53% NOR from out of catchment (55% of out of catchment pupils are from out of county – Warwickshire). Forecast to have a fluctuating surplus between 4% and 32%.

3319 – St Margaret's CE Primary. Above average birth rates. Some housing development in the local area. 57% NOR from within catchment area. Gains from Hinckley and Barwell areas. Forecast to have a 22% deficit of places by 2029.

Future Actions

3319 – St Margaret's CE Primary – Keep on watching brief, catchment pushback if required.

Although forecast numbers show a potential shortage of 73 places there are large numbers of out of catchment pupils currently in this planning area. Catchment pushback can be used in the first instance to manage pupil numbers, particularly back to Warwickshire County.

Planning Area Data – Hinckley & Burbage Primary

Planning area name:

Hinckley & Burbage Primary

Number:

855 0021

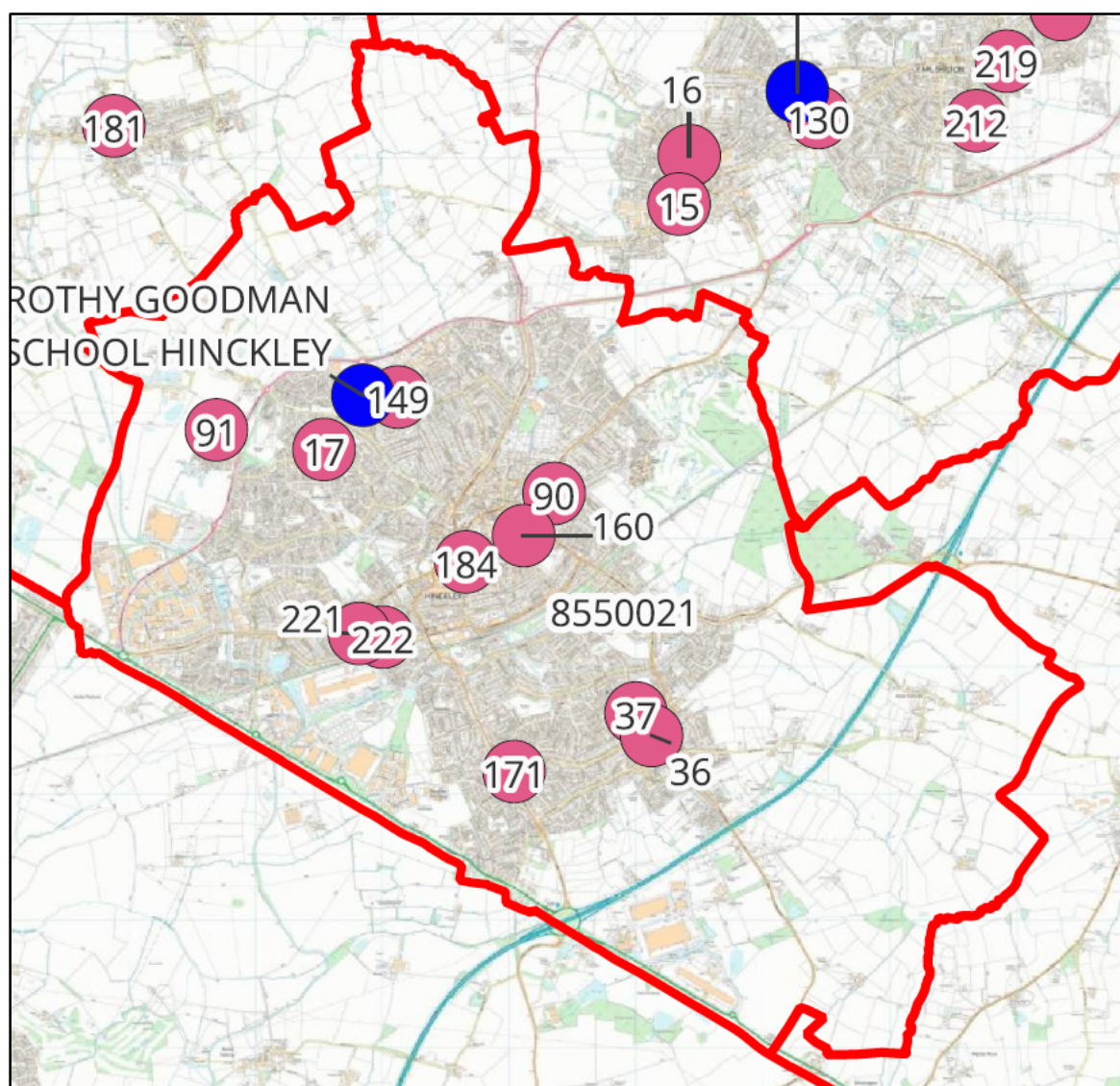
District Area:

Hinckley & Bosworth Borough Council

Schools:

11

There are 7 primary schools in the Hinckley & Burbage Primary planning area. In addition to this there is 2 infant schools and 2 junior schools. 6 are maintained schools and 5 are academies.

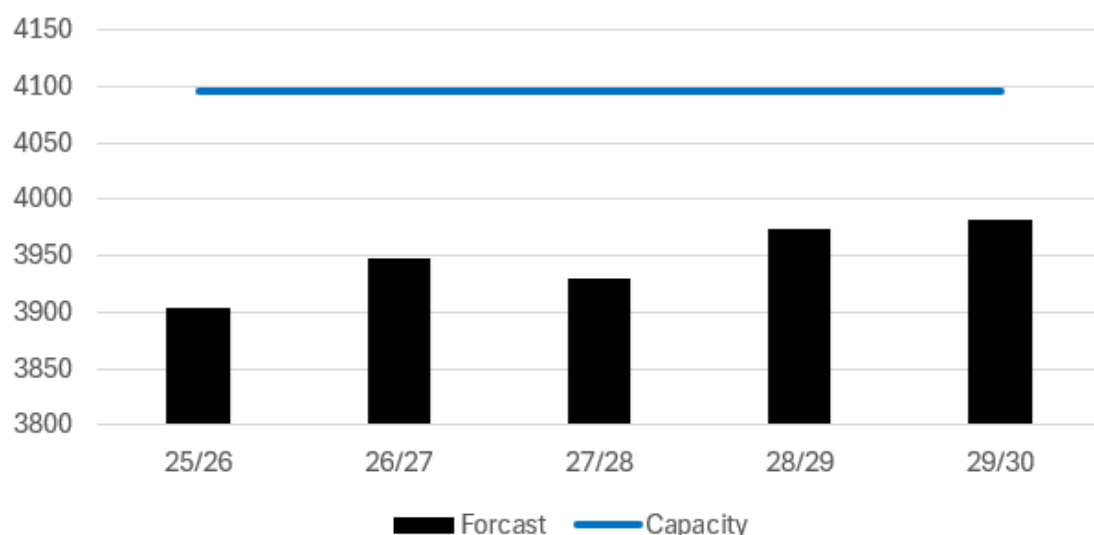


A map showing the Hinckley & Burbage Primary planning area. There are 11 schools. The table below provides the map reference numbers alongside relevant school names.

Table 11 showing map number and school name

School Name	DfE Number	Status
17 - Battling Brook Primary School	855 2162	Academy Converter
36 - Burbage Church of England Infant School	855 3018	Voluntary Controlled School
37 - Burbage Junior School	855 2142	Voluntary Controlled School
90 - Hinckley Parks Primary School	855 2044	Academy Converter
149 - Richmond Primary School	855 2351	Academy Converter
160 - Saint Peter's Catholic Primary School A Voluntary Academy	855 3336	Voluntary Aided School
171 - Sketchley Hill Primary School Burbage	855 2183	Community School
184 - St Mary's Church of England Primary School Hinckley	855 3042	Voluntary Controlled School
91 - Hollycroft Primary School	855 2048	Academy Converter
221 - Westfield Infant School	855 2046	Community School
222 - Westfield Junior School	855 2045	Community School

8550021 Hinckley & Burbage Primary



A chart showing forecast pupil numbers for 2025-2030 against a fixed capacity line. Capacity remains at 4,095 each year. Full data is provided in the table below.

Table 12 provides a full breakdown of the data presented in the chart above, including totals and school-level breakdowns.

Forecast Data	AN	Cap	25/26	26/27	27/28	28/29	29/30
Battling Brook Primary School	60	420	588	592	595	599	595
Burbage Church of England Infant School	90	270	234	251	259	274	274
Burbage Junior School	90	372	361	363	368	373	379
Hinckley Parks Primary School	90	630	570	582	579	581	584
Richmond Primary School	60	420	475	469	446	425	429
Saint Peter's Catholic Primary School A Voluntary Academy	30	210	194	190	185	182	181
Sketchley Hill Primary School Burbage	90	630	578	593	600	614	619
St Mary's Church of England Primary School Hinckley	30	294	238	240	231	236	232
Hollycroft Primary School	30	210	74	105	138	174	186
Westfield Infant School	90	270	241	221	204	209	209
Westfield Junior School	90	369	350	341	325	306	294
Total:	750	4,095	3,903	3,947	3,930	3,973	3,982

Current Overview

Surplus places forecast across planning area. Large scale housing developments planned within the area.

Many schools in the planning area have temporarily reduced their PAN due to low numbers and financial deficit.

2162 – Battling Brook Primary School – Popular school, good levels of in catchment attendance, below average birth rate. If forecast housing gain comes through, then will need to keep PAN at 87.

3018 – Burbage Church of England Infant School – Moderate sized housing development in catchment area, keep on watching brief if planned housing gain comes through. Slightly higher than average births for 2026 entry. 40% NOR from out of catchment.

2142 – Burbage Junior School – Moderate sized housing development in catchment area, keep on watching brief if planned housing gain comes through. 40% NOR from out of catchment.

2044 – Hinckley Parks Primary School – Forecast to remain fairly full at around 10% surplus spaces, very small amount of housing gain in area. Only 30% NOR from catchment area. Lower than average births, particularly for 2025 entry.

2351 – Richmond Primary School – Births higher than average and significant amounts of housing development in the catchment area. 50% NOR from out of catchment.

3336 – St Peters Catholic Primary School A Voluntary Academy – Forecast to have a steady surplus of around 3%.

2183 – Sketchley Hill Primary School Burbage – Average birth rate, some housing development in the area. Housing gain numbers help with reducing surplus spaces but surplus still increases by 10% (from 7 – 17%).

3042 – St Marys Church of England Primary School – Above average births, but no expected housing gain in catchment area. Forecast to remain steady and full at reduced PAN of 30.

2048 – Hollycroft Primary School – Forecast to remain full, currently taking 40% NOR from out of catchment.

2046 – Westfield Infant School – Average birth rate, around 80% NOR from in catchment area. Forecast to remain full.

2045 – Westfield Junior School – Average birth rate, around 80% NOR from in catchment area. Forecast to remain full.

Future Actions

2162 - Battling Brook Primary School – reduced PAN to 60 following consultation, however, are taking 87 August 2025 due to demand. If demand continues for August 2026, then will reinstate PAN at 87 as previously was.

2351 – Richmond Primary School – Have temporarily reduced PAN to 60 due to low numbers and financial deficit.

2048 – Hollycroft Primary School – 210 place primary school opened in August 2023.

3042 – St Marys C of E Primary School – Have temporarily reduced PAN to 30 due to low numbers and financial deficit.

2046 – Westfield Infant School – Looking to reduce PAN from 90 to 60 from August 2027 due to low numbers and financial deficit.

Overall, there is capacity within the planning area to cope with projected pupil forecasts and housing growth. All schools reducing PAN have been told that they may be required to increase again shortly if housing gain numbers begin to come through. Keep the planning area on watching brief.

Planning Area Data – Linford Groby Kirby Ratby Primary

Planning area name:

Linford Groby Kirby Ratby Primary

Number:

855 0250

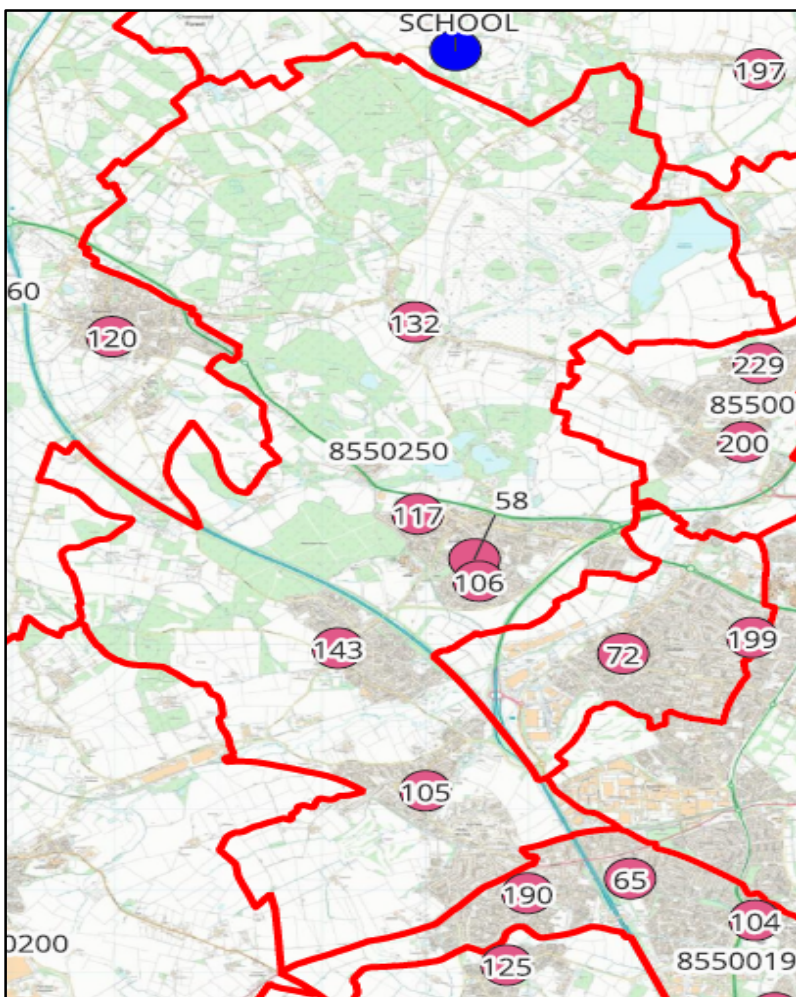
District Area:

Hinckley & Bosworth Borough Council

Schools:

6

There are 6 primary schools in the Linford Groby Kirby Ratby Primary planning area. 2 are maintained schools and 4 are academies.

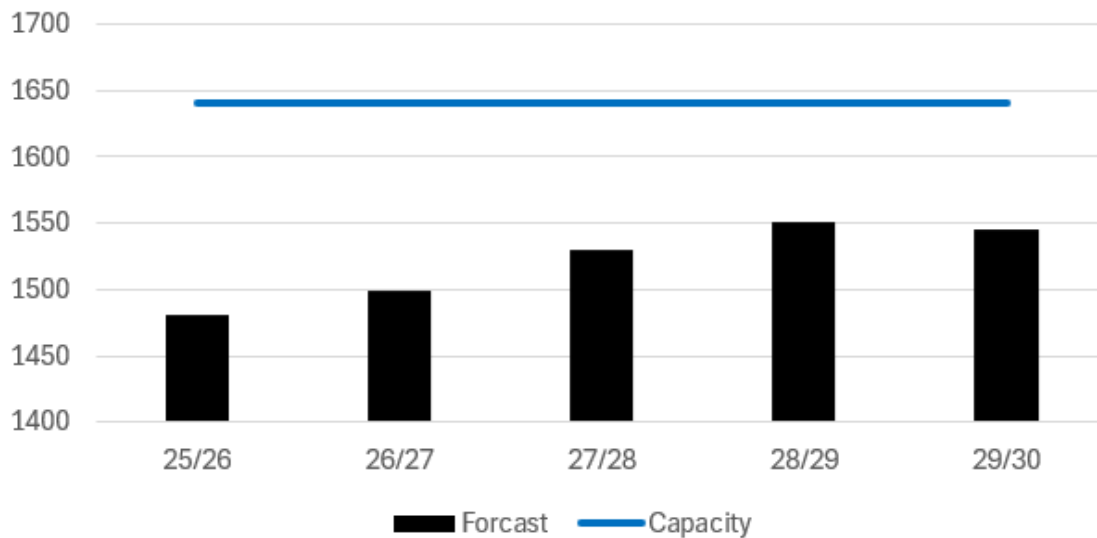


A map showing the Linford Groby Kirby Ratby Primary planning area. There are 6 schools. The table below provides the map reference numbers alongside relevant school names.

Table 13 showing map number and school name

School Name	DfE Number	Status
58 - Elizabeth Woodville Primary School	855 2123	Community School
105 - Kirby Muxloe Primary School	855 2055	Academy Convertor
106 - Lady Jane Grey Primary School	855 2376	Academy Convertor
117 - Martinshaw Primary School	855 2042	Community School
132 - Newtown Linford Primary School	855 2079	Academy Convertor
143 - Ratby Primary School	855 2085	Academy Convertor

8550250 Linford Groby Kirby Ratby Primary



A chart showing forecast pupil numbers for 2025-2030 against a fixed capacity line. Capacity remains at 1,641 each year. Full data is provided in the table below.

Table 13 provides a full breakdown of the data presented in the chart above, including totals and school-level breakdowns.

Forecast Data	AN	Cap	25/26	26/27	27/28	28/29	29/30
Elizabeth Woodville Primary School	30	210	210	212	213	212	215
Kirby Muxloe Primary School	60	420	405	417	422	425	426
Lady Jane Grey Primary School	30	210	193	194	184	178	172
Martinshaw Primary School	30	262	192	180	190	185	179
Newtown Linford Primary School	17	119	116	123	126	132	136
Ratby Primary School	60	420	365	373	395	419	417
Total:	227	1,641	1,481	1,499	1,530	1,551	1,545

Current Overview

There are enough spaces within the planning area.

2055 – Kirby Muxloe Primary School – Above average births for most years except 2025 entry. 64% NOR attend from within catchment area. Forecast shows a small amount of surplus capacity (around 2%) no significant housing development approved at present.

2085 – Ratby Primary School – All births at below average levels, significant level of new housing under construction within the catchment area. 82% NOR attend from within catchment. School is on a constrained site, so expansion is not possible.

2079 – Newtown Linford Primary School – All births below average levels. Expect little or no impact on cohort sizes post-birth. A moderate level of new housing is expected within the catchment area. 65% NOR from out of catchment.

2123 – Elizabeth Woodville Primary School – Births around average but lower for 2025 entry. 60% NOR attend from within catchment. No housing planned in catchment area. Forecast to have around 5% surplus capacity.

2376 – Lady Jane Grey Primary School – Average birth rates. No housing planned in the catchment area. 45% NOR from within catchment area, gains from Martinshaw (2042) catchment. Forecast to have around 9% surplus capacity.

2042 – Martinshaw Primary School – Slightly below average birth rate. No housing development expected in the catchment area. Forecast to have around 30-35% surplus spaces. 55% NOR from within catchment area.

A large development within the Blaby district Plan will create the need for a new one form entry primary school in the locality.

Future Actions

2055 Kirby Muxloe Primary School – School increased net capacity from 408 to 420 in 2021.

2042 – Martinshaw Primary School – Keep on watching brief. Temporarily reduce PAN if needed.

2079 – Newtown Linford Primary School – Keep on watching brief. Catchment pushback if needed.

Discussions with developers about a new 1FE primary school in Ratby to accommodate pupils from housing gain.

Overall, there is capacity within the planning area to cope with projected pupil forecasts and housing growth.

Planning Area Data – Market Bosworth Primary

Planning area name:

Market Bosworth Primary

Number:

855 0270

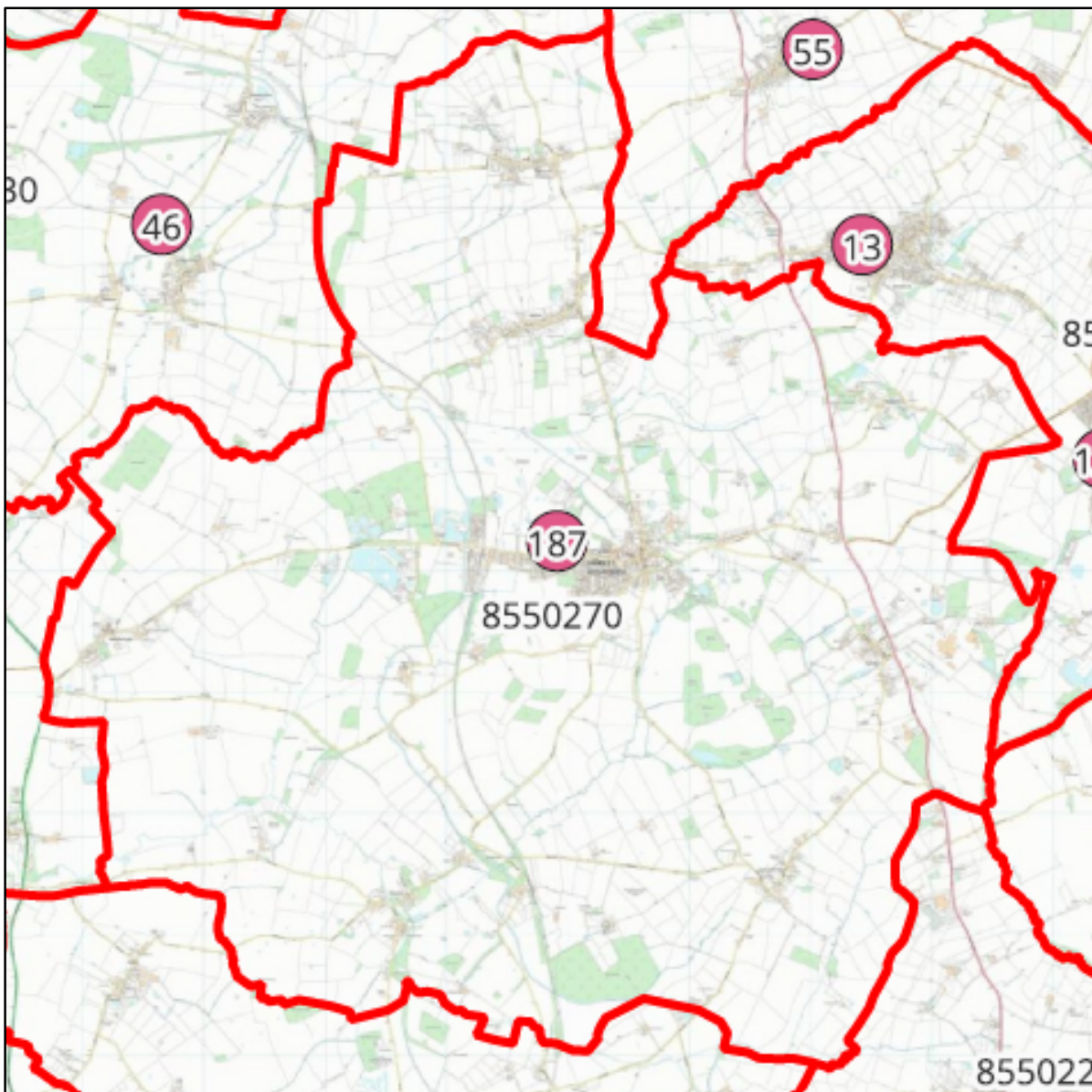
District Area:

Hinckley & Bosworth Borough Council

Schools:

1

There is 1 primary school in the Market Bosworth Primary planning area, it is an academy.

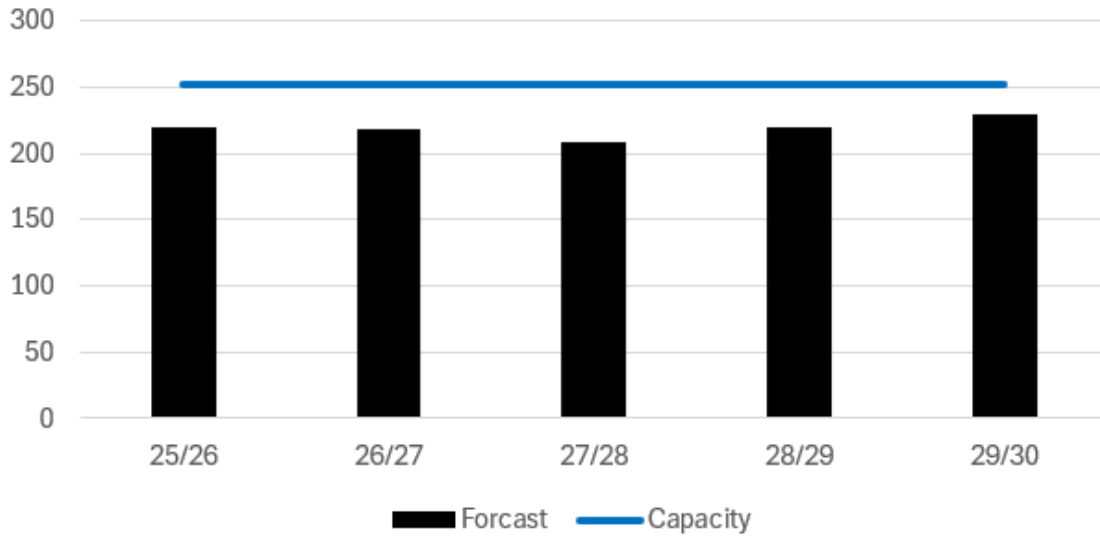


A map showing the Market Bosworth Primary planning area. There is 1 school. The table below provides the map reference numbers alongside relevant school names.

Table 15 showing map number and school name

School Name	DfE Number	Status
187 - St Peter's Church of England Primary Academy	855 3334	Academy Converter

8550270 Market Bosworth Primary



A chart showing forecast pupil numbers for 2025-2030 against a fixed capacity line. Capacity remains at 252 each year. Full data is provided in the table below.

Table 16 provides a full breakdown of the data presented in the chart above, including totals and school-level breakdowns.

Forecast Data	AN	Cap	25/26	26/27	27/28	28/29	29/30
St Peter's Church of England Primary Academy	36	252	220	218	209	220	230
Total:	36	252	220	218	209	220	230

Current Overview

3334 – St Peter's Church of England Primary Academy – Average birth levels but lower for 2025 entry. Some small housing developments within the catchment area. 62% NOR from within catchment area.

Future Actions

3334 – St Peter's Church of England Primary Academy – Keep on watching brief and temporarily reduce PAN if needed.

Planning Area Data – Markfield Stanton Thornton Primary

Planning area name:

Markfield Stanton Thornton Primary

Number:

855 0260

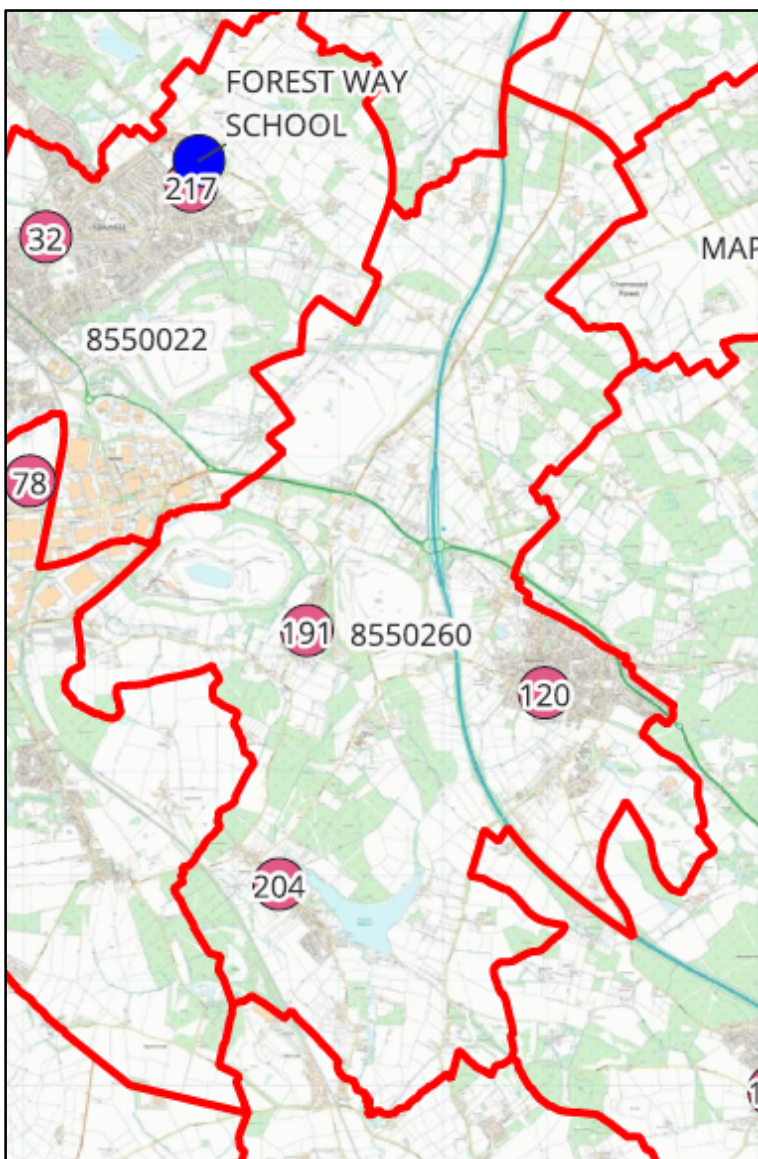
District Area:

Hinckley & Bosworth Borough Council

Schools:

3

There are 3 primary schools in the Markfield Stanton Thornton Primary planning area. All 3 are academies.

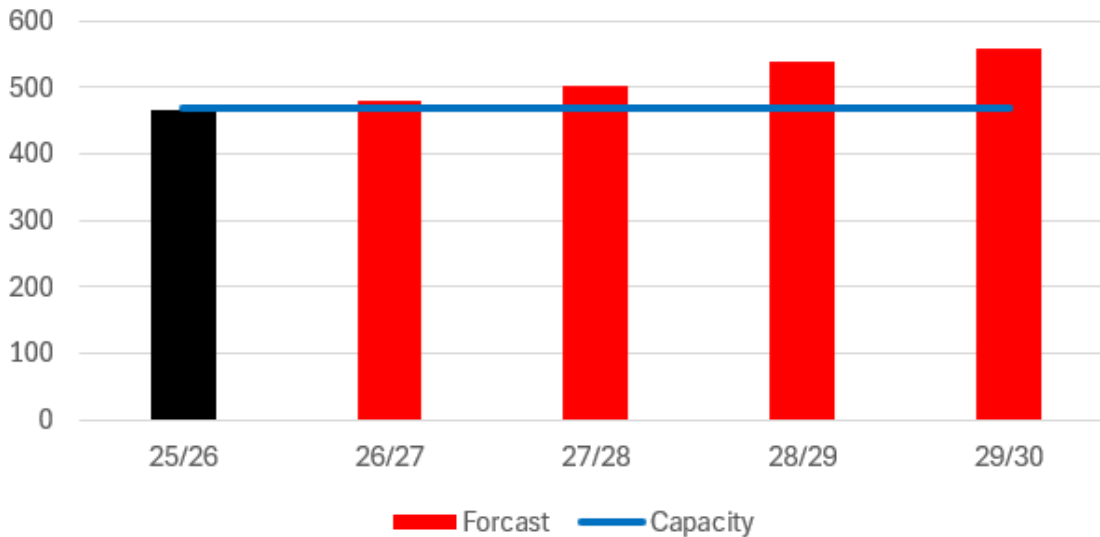


A map showing the Markfield Stanton Thornton Primary planning area. There are 3 schools. The table below provides the map reference numbers alongside relevant school names.

Table 14 showing map number and school name

School Name	DfE Number	Status
120 - Mercenfeld Primary School	855 2069	Academy Convertor
191 - Stanton Under Bardon Community Primary School	855 2070	Academy Convertor
204 - Thornton Primary School	855 2009	Academy Convertor

8550260 Markfield Stanton Thornton Primary



A chart showing forecast pupil numbers for 2025-2030 against a fixed capacity line. Capacity remains at 469 each year. Full data is provided in the table below.

Table 18 provides a full breakdown of the data presented in the chart above, including totals and school-level breakdowns.

Forecast Data	AN	Cap	25/26	26/27	27/28	28/29	29/30
Mercenfeld Primary School	30	210	239	245	263	279	299
Stanton Under Bardon Community Primary School	17	119	95	107	102	110	108
Thornton Primary School	20	140	131	127	137	149	152
Total:	67	469	465	479	502	538	559

Current Overview

Planning area expected to exceed capacity in the coming years.

2069 – Mercenfeld Primary School. Most births above average levels. Significant level of new housing is expected. High levels of in catchment attendance, 88% NOR from in catchment. 81% catchment retention. Has physical capacity for PAN 50 so it can increase if needed.

2070 – Stanton Under Bardon Community Primary School. Births at average or above average levels. No new housing expected. 57% NOR from out of catchment 81% catchment retention.

2009 – Thornton Primary School. Most births at above average levels. Moderate level of new housing expected. 57% NOR from out of catchment (large number from 2334 – Dove Bank). 77% catchment retention. Forecast deficit places rising to 24% over the course of the forecast.

Future Actions

2069 – Mercenfeld Primary School - Keep on watching brief – may need to increase PAN back up to 50 if required.

2009 – Thornton Primary School – Keep on watching brief. Catchment pushback to 2334 Dove Bank Primary School (Planning Area 8550024) if required.

Planning Area Data – Sheepy Primary

Planning area name:

Sheepy Primary

Number:

855 0240

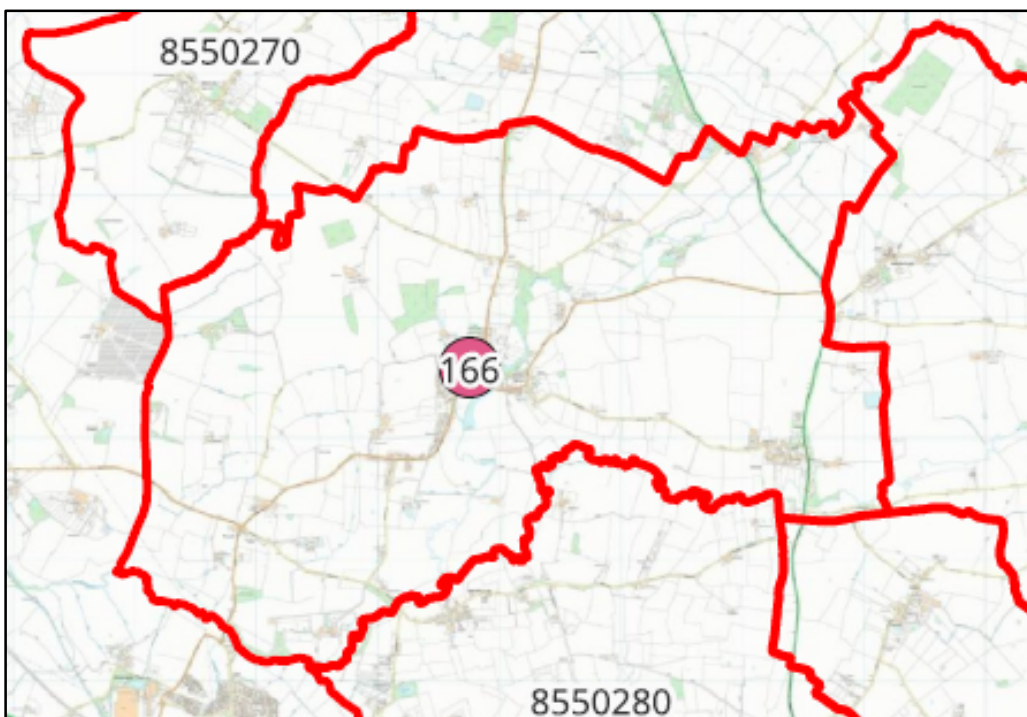
District Area:

Hinckley & Bosworth Borough Council

Schools:

1

There is 1 primary school in the Sheepy Primary planning area, it is maintained.

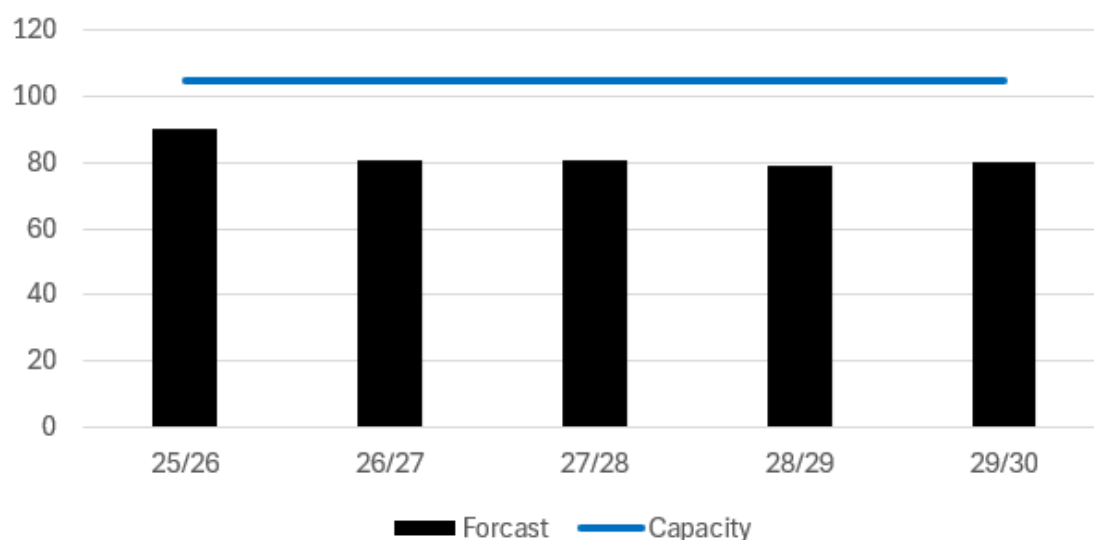


A map showing the Sheepy Primary planning area. There is 1 school. The table below provides the map reference numbers alongside relevant school names.

Table 15 showing map number and school name

School Name	DfE Number	Status
166 - Sheepy Magna Church of England Primary School	855 3080	Voluntary Controlled School

8550240 Sheepy Primary



A chart showing forecast pupil numbers for 2025-2030 against a fixed capacity line. Capacity remains at 105 each year. Full data is provided in the table below.

Table 20 provides a full breakdown of the data presented in the chart above, including totals and school-level breakdowns.

Forecast Data	AN	Cap	25/26	26/27	27/28	28/29	29/30
Sheepy Magna Church of England Primary School	15	105	90	81	81	79	80
Total:	15	105	90	81	81	79	80

Current Overview

3080 – Sheepy Magna CE Primary School. Stable births, 56% of pupils come from within the catchment area. 82% NOR coming from out of catchment are from out of county, Warwickshire.

Future Actions

3080 – Sheepy Magna CE Primary School – Keep on watching brief, catchment pushback if needed.

Overall, there is capacity within the planning area to cope with projected pupil forecasts and housing growth.

Planning Area Data – Witherley Primary

Planning area name:

Witherley Primary

Number:

855 0280

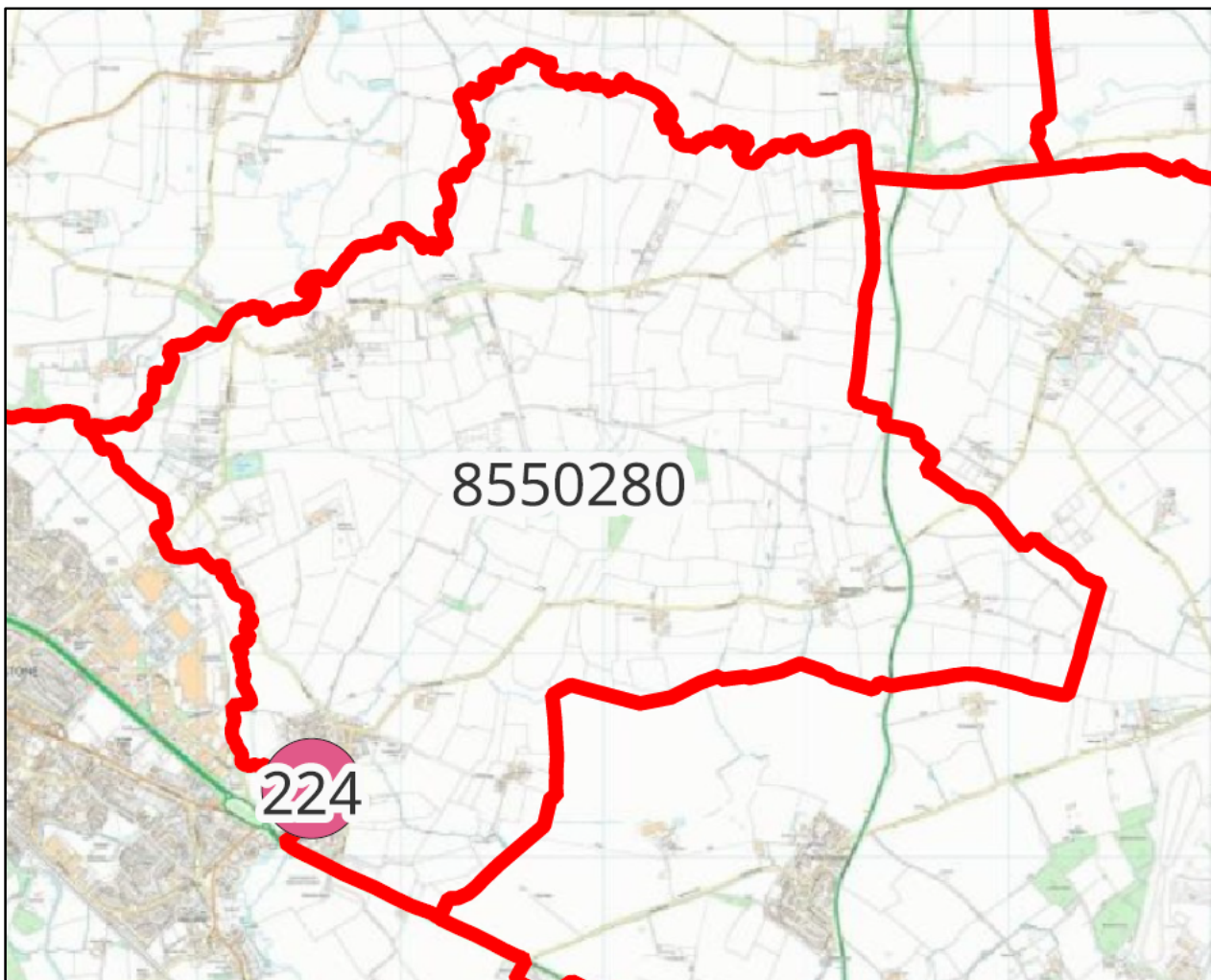
District Area:

Hinckley & Bosworth Borough Council

Schools:

1

There is 1 primary school in the Witherley Primary planning area, it is maintained.

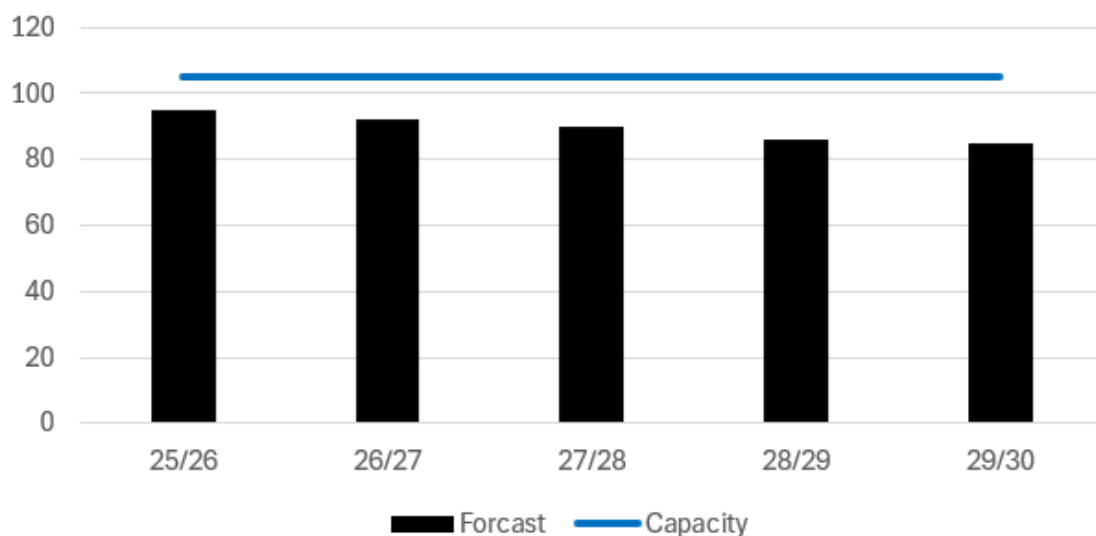


A map showing the Witherley Primary planning area. There is 1 school. The table below provides the map reference numbers alongside relevant school names.

Table 21 showing map number and school name

School Name	DfE Number	Status
224 - Witherley Church of England Primary School	855 3102	Voluntary Controlled School

8550280 Witherley Primary



A chart showing forecast pupil numbers for 2025-2030 against a fixed capacity line. Capacity remains at 105 each year. Full data is provided in the table below.

Table 22 provides a full breakdown of the data presented in the chart above, including totals and school-level breakdowns.

Forecast Data	AN	Cap	25/26	26/27	27/28	28/29	29/30
Witherley Church of England Primary School	15	105	95	92	90	86	85
Total:	15	105	95	92	90	86	85

Current Overview

3102 – Witherley Church of England Primary School. Below average but consistent births. 70% NOR from out of catchment, mostly from out of county (Warwickshire). Numbers forecast to remain around 5% surplus spaces.

Future Actions

None needed.