

School Places Strategy 2026 - 2031 Secondary School Planning Area Data

Contents

- Planning Area Data – Oadby Secondary 2
- Planning Area Data – Wigston Secondary..... 5
- Planning Area Data – Braunstone Town Secondary 7
- Planning Area Data – Countesthorpe Secondary 9
- Planning Area Data – Enderby Secondary 11
- Planning Area Data – Syston Secondary 13
- Planning Area Data – Barrow & Quorn 15
- Planning Area Data – Birstall 17
- Planning Area Data – Loughborough 19
- Planning Area Data – Shepshed 21
- Planning Area Data – Anstey 23
- Planning Area Data – Broughton Astley Secondary 25
- Planning Area Data – Market Harborough Secondary..... 27
- Planning Area Data – Kibworth Secondary..... 29
- Planning Area Data – Lutterworth Secondary..... 31
- Planning Area Data – Desford Secondary 34
- Planning Area Data – Groby Secondary..... 36
- Planning Area Data – Hinckley and Earl Shilton Secondary..... 38
- Planning Area Data – Market Bosworth Secondary..... 41
- Planning Area Data – Markfield Secondary 43
- Planning Area Data – Melton Secondary..... 45
- Planning Area Data – Belvoir Secondary 47
- Planning Area Data – Castle Donnington Secondary 49
- Planning Area Data – Coalville Secondary 51
- Planning Area Data – Ashby Secondary..... 54
- Planning Area Data – Ibstock Secondary 56

Planning Area Data – Oadby Secondary

Planning area name:

Oadby Secondary

Number:

855 1014

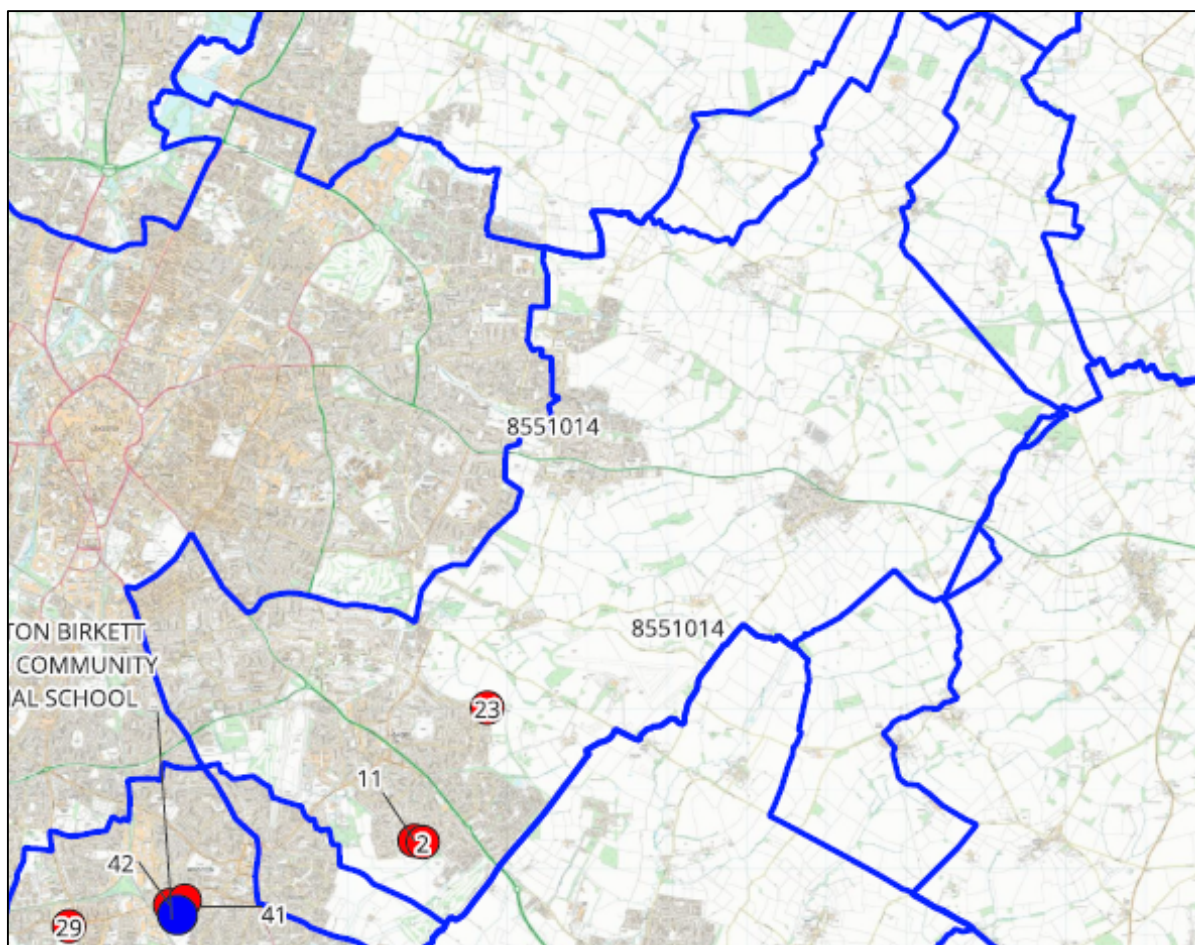
District Area:

Oadby and Wigston Borough Council

Schools:

3

There are 3 secondary schools in the Oadby planning area. All 3 secondaries are academies.

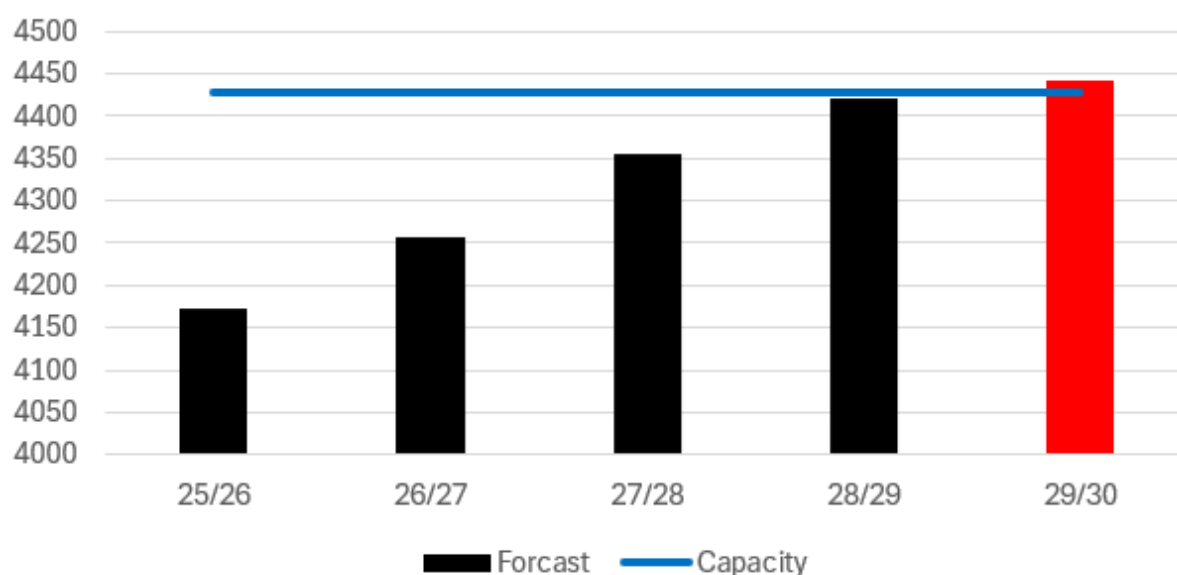


A map showing the Oadby Secondary planning area. There are 3 secondary schools. The table below provides the map reference numbers alongside relevant school names.

Table 1 showing map number and school name

School Name	DfE Number	Status
2 - Beauchamp College	4045	Academy Convertor
11 - Gartree High School	4041	Academy Convertor
23 - Manor High School	4043	Academy Convertor

8551014 Oadby Secondary



A chart showing forecast pupil numbers for 2025-2030 against a fixed capacity line. Capacity remains at 4,429 each year. Full data is provided in the table below.

Table 2 provides a full breakdown of the data presented in the chart above, including totals and school-level breakdowns.

Forecast Data	AN	Cap	25/26	26/27	27/28	28/29	29/30
Beauchamp College	330	2454	2294	2348	2409	2446	2467
Gartree High School	185	925	923	923	927	926	925
Manor High School	210	1050	956	987	1020	1048	1049
Total:	725	4429	4173	4258	4356	4420	4441

Current Overview

There is one large housing developments in the immediate vicinity and other smaller developments creating growth over the next few years in the planning area.

Academies have different admissions criteria which include accepting places from Trust primaries having priority over County children. Forecasting is hard to predict especially with the extremely large number of pupils (circa 1,000 pupils) from Leicester City. The admissions criteria may detrimentally affect County pupils in their applications.

5403 Wigston Academy and 4033 Wigston College accept in year pupils and pushback children from the Oadby Planning area.

Future Actions

4041 – Oadby Gartree increased places by 30 per year for next five years from Sep 2021 (150 places total).

4045 – Oadby Beauchamp increased 11 – 16 places by 30 per year for 2 years from September 2023. This will reduce by 15 places from September 2025. There will be an increase of 75 Post 16 places at the same time.

4043 – Manor High. A further 150 11 - 16 places will be created from September 2025. 30 per year for the next 5 years.

In effect we have added 375 11 – 16 places and 75 Post 16 places between 2021 and 2025 in the planning area for new housing growth.

Planning Area Data – Wigston Secondary

Planning area name:

Wigston Secondary

Number:

855 1130

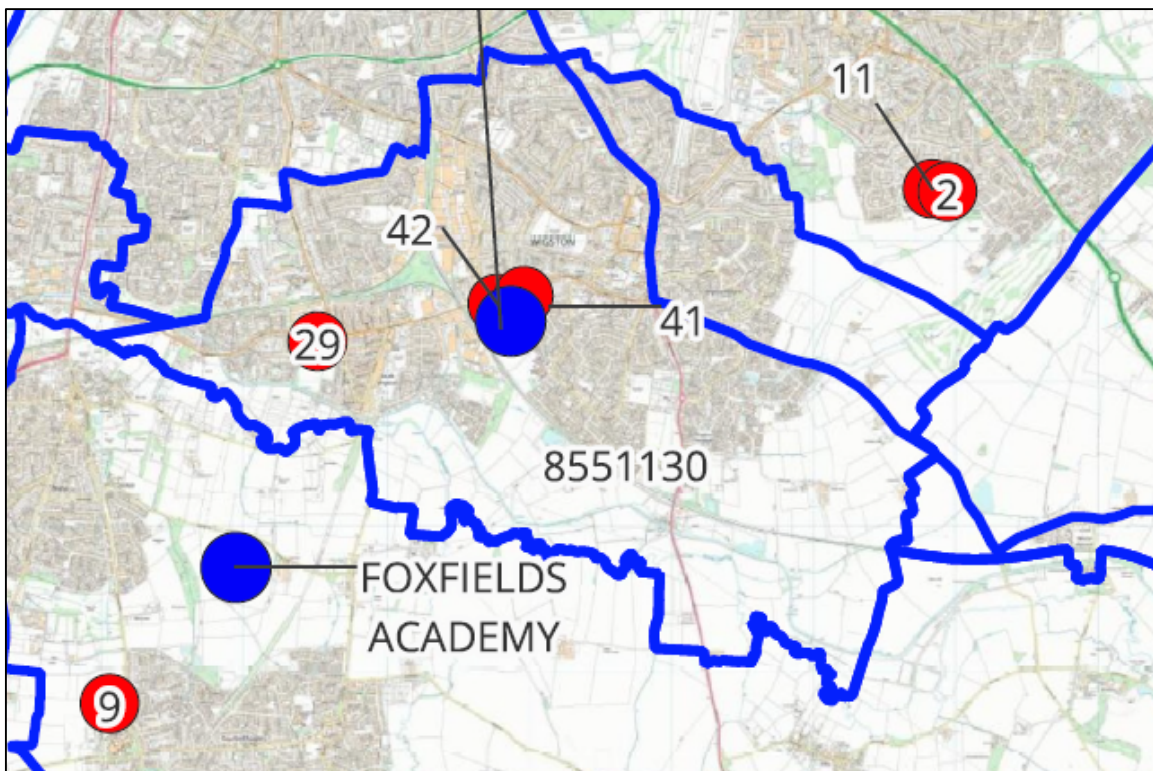
District Area:

Oadby and Wigston Borough Council

Schools:

2

There are 2 secondary schools in the Wigston Secondary planning area. Both are academies.

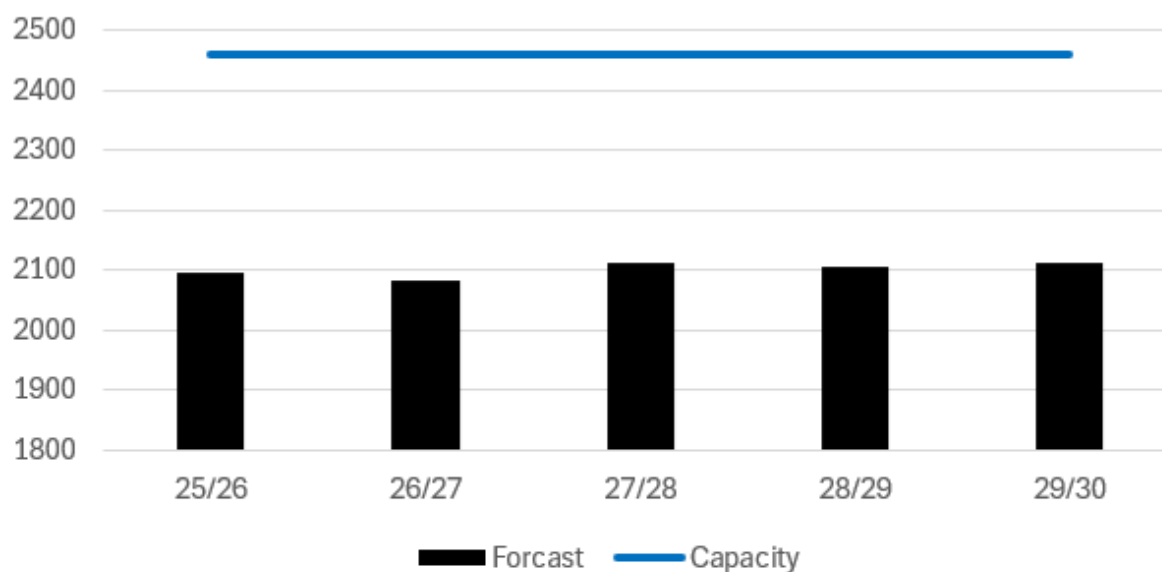


A map showing the Wigston Secondary planning area. There are 2 schools. The table below provides the map reference numbers alongside relevant school names.

Table 3 showing map number and school name

School Name	DfE Number	Status
41 - Wigston Academy	5403	Academy Convertor
29 - South Wigston High School	5402	Academy Convertor

8551130 Wigston Secondary



A chart showing forecast pupil numbers for 2025-2030 against a fixed capacity line. Capacity remains at 2,460 each year. Full data is provided in the table below.

Table 4 provides a full breakdown of the data presented in the chart above, including totals and school-level breakdowns.

Forecast Data	AN	Cap	25/26	26/27	27/28	28/29	29/30
Wigston Academy	260	1560	1338	1359	1400	1415	1427
South Wigston High School	180	900	757	725	712	690	686
Total:	440	2460	2095	2084	2112	2105	2113

Current Overview

Two 11-16 schools and 1 post-16 school in area.

5402 – South Wigston High increased from 875 to 900 pupils through S106 funding. This is another school in close proximity of Leicester City with just under 300 of pupils from across border.

5403 – Wigston Academy has a declining surplus forecasted to 2029/30 partly due to change of Ofsted grading to Good and the increase in year 7 pupils coming through from Primary. This shares a campus and some facilities with 4033 – Wigston College under the same Trust.

Future Actions

Oadby and Wigston new local plan has preferred sites for a total of 3,500 dwellings. Wigston has sites for a preferred 1,700 dwellings. This generates 340 11 – 18 places. These haven't been included in the forecasting.

Watching brief on how housing developments increase need for places without secured S106 funding.

5403 Wigston Academy and 4033 Wigston College accept pushback children from the Oadby Planning area. 4041 – Oadby Gartree, 4045 – Oadby Beauchamp, 4043 – Manor High.

Planning Area Data – Braunstone Town Secondary

Planning area name:

Braunstone Town Secondary

Number:

855 1019

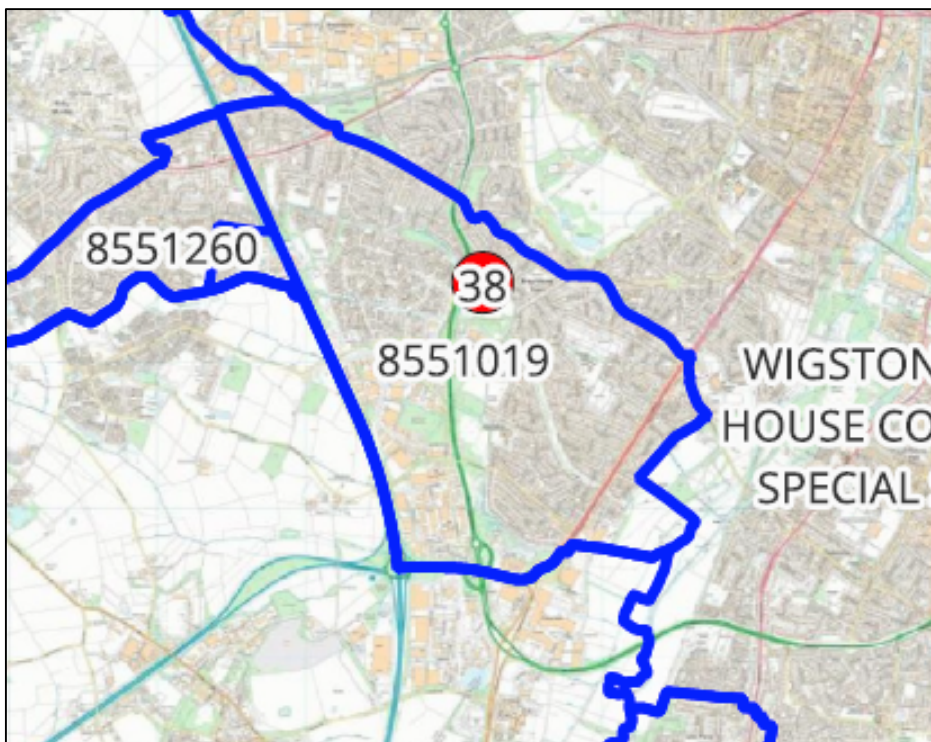
District Area:

Blaby Council

Schools:

1

There is 1 secondary school in the Braunstone Town planning area.



A map showing the Braunstone Town planning area. There is 1 school. The table below provides the map reference numbers alongside relevant school names.

Table 5 showing map number and school name

School Name	DfE Number	Status
38 - The Winstanley School	4023	Academy Convertor

Table 6 provides a full breakdown of the data, including totals and school-level breakdowns

Forecast Data	AN	Cap	25/26	26/27	27/28	28/29	29/30
The Winstanley School	130	665	653	670	670	664	653
Total:	130	665	653	670	670	664	653

Current Overview

4023 – Braunstone Winstanley School Academy has a large (circa 325) Leicester City contingent of students, with only 260 Leicestershire children attending. There has been an average of 65 City pupils per year attending for the last 5 years. Shares catchment with 4048 - Bosworth Academy.

Future Actions

4023 – Braunstone Winstanley School Academy. Start to push back City children to create space for Leicestershire students. Continue to maintain a watching brief.

855 1200 – Market Bosworth planning area. 4048 - Bosworth Academy, is part of same MAT and share catchment criteria although they are 5.5 miles apart. Bosworth Academy is the more popular school of the two.

Planning Area Data – Countesthorpe Secondary

Planning area name:

Countesthorpe Secondary

Number:

855 1135

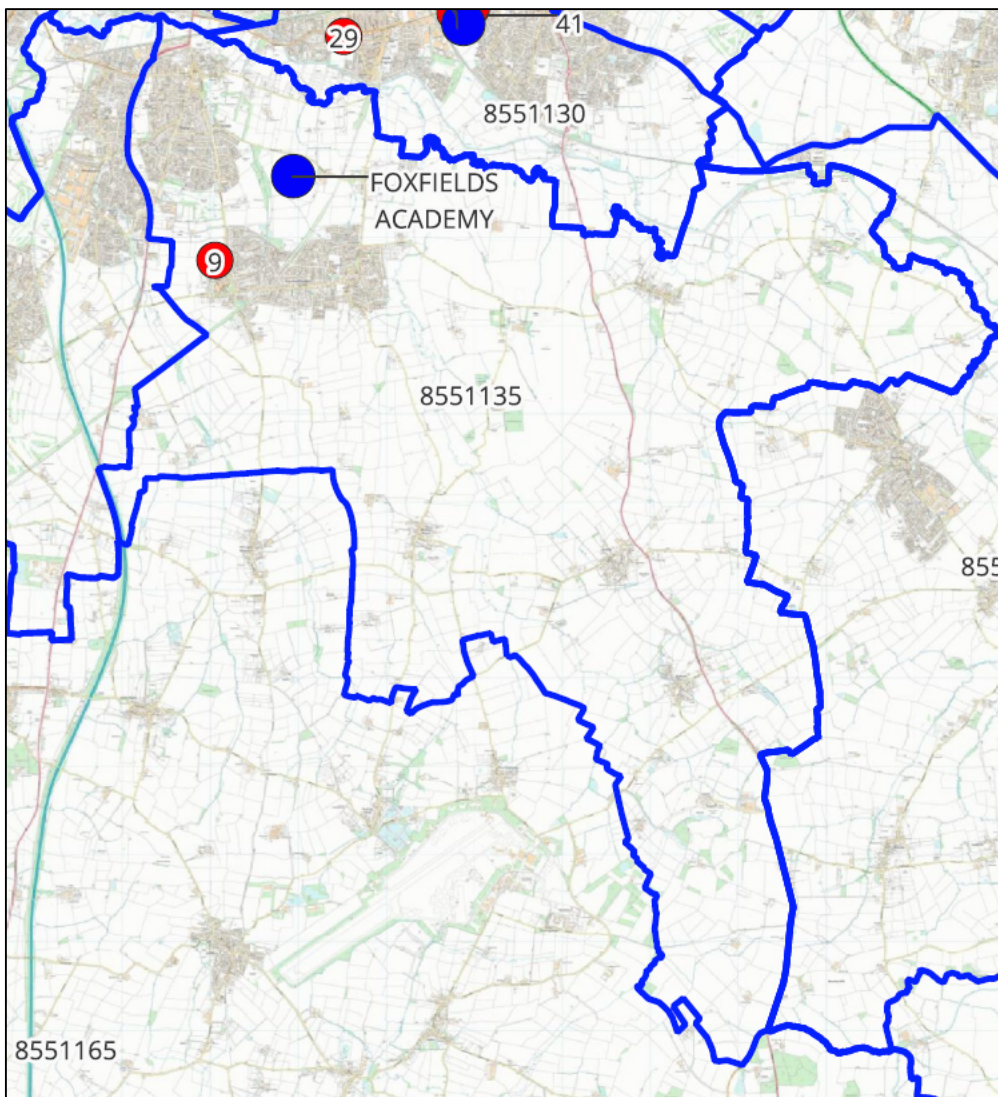
District Area:

Blaby Council

Schools:

1

There is one secondary school in the Countesthorpe Secondary planning area.

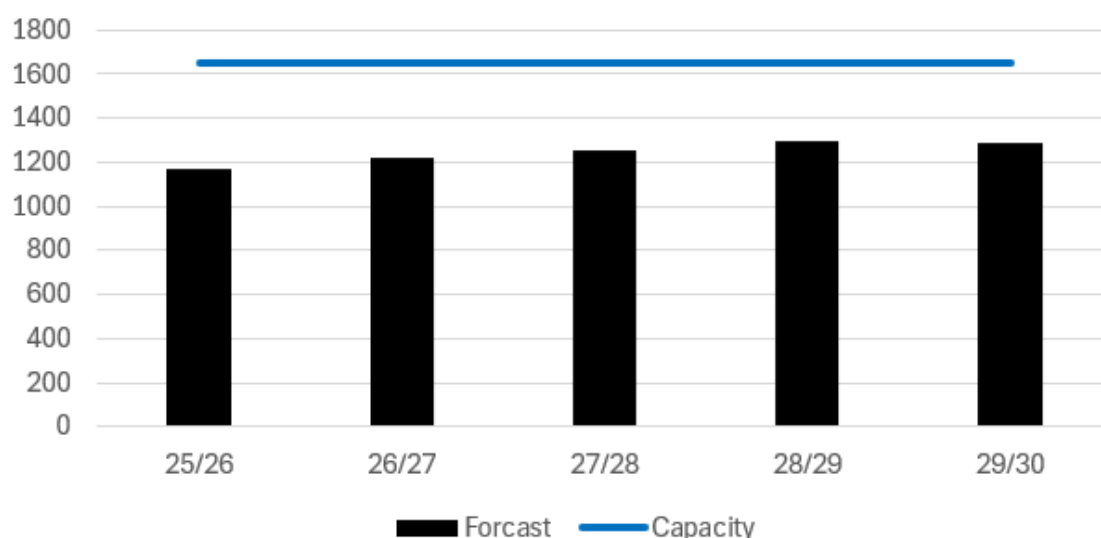


A map showing the Countesthorpe Secondary planning area. There is 1 school. The table below provides the map reference numbers alongside relevant school names.

Table 7 showing map number and school name

School Name	DfE Number	Status
9 - Countesthorpe Academy	4027	Academy Converter

8551135 Countesthorpe Secondary



A chart showing forecast pupil numbers for 2025-2030 against a fixed capacity line. Capacity remains at 1,650 each year. Full data is provided in the table below.

Table 8 provides a full breakdown of the data presented in the chart above, including totals and school-level breakdowns.

Forecast Data	AN	Cap	25/26	26/27	27/28	28/29	29/30
Countesthorpe Academy	300	1650	1173	1221	1250	1294	1290
Total:	300	1650	1173	1221	1250	1294	1290

Current Overview

4024 – Countesthorpe Academy - reducing surplus but still large amount of capacity for the next 5 years forecast. There are initial housing development enquiries around Countesthorpe which would reduce capacity further.

Future Actions

4024- No issues in the short term. Trust working with operational 11 – 16 PAN of 225 and increasing Post 16 PAN from 150 to 180, which we will be reviewing with them to ensure places available. Mid - Longer term - spare capacity could reduce if proposed housing developments are created. Continue to liaise with Academy Trust on development.

855 1160 Enderby Secondary - Could also receive pushback of catchment students from 4506 Brockington College.

Planning Area Data – Enderby Secondary

Planning area name:

Enderby Secondary

Number:

855 1160

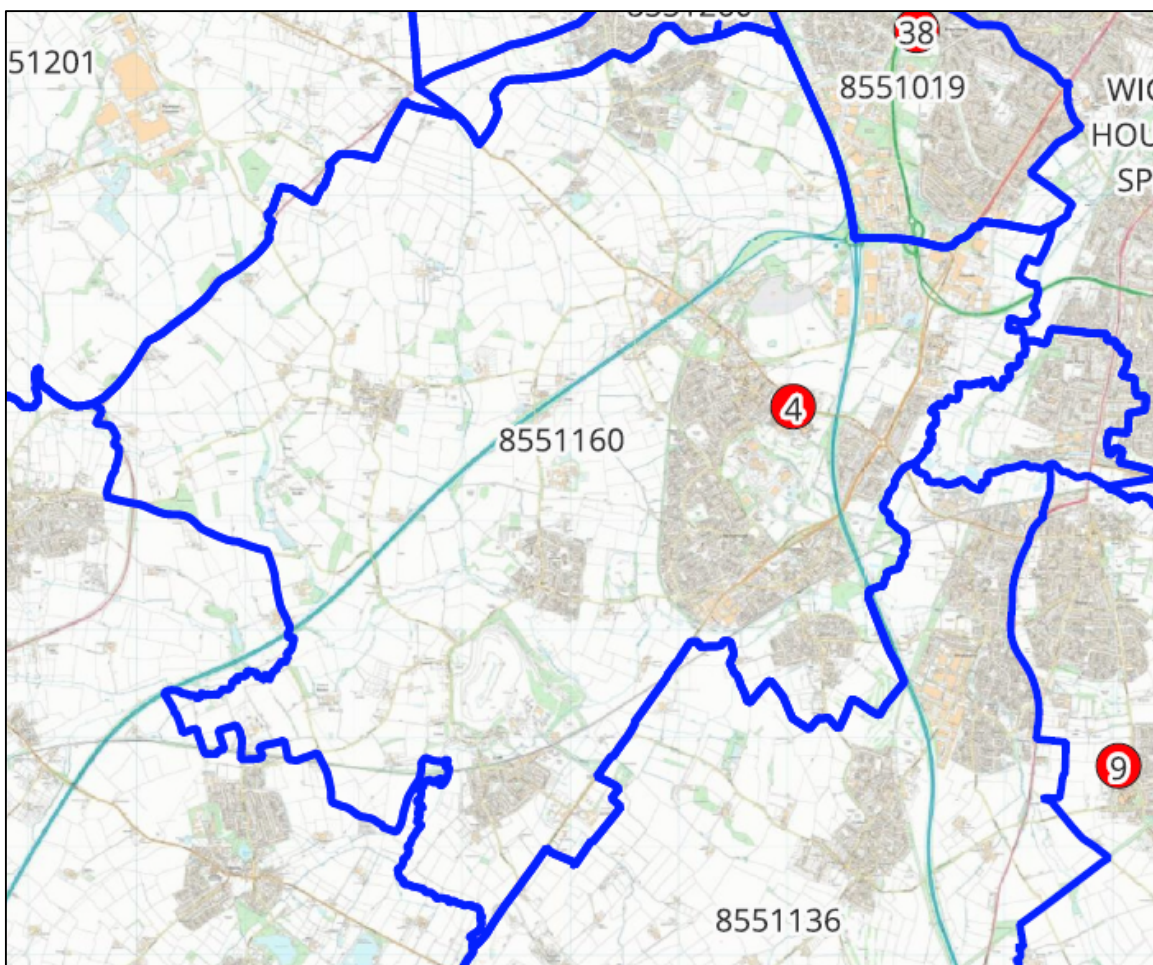
District Area:

Blaby Council

Schools:

1

There is one secondary school in the Enderby Secondary planning area.

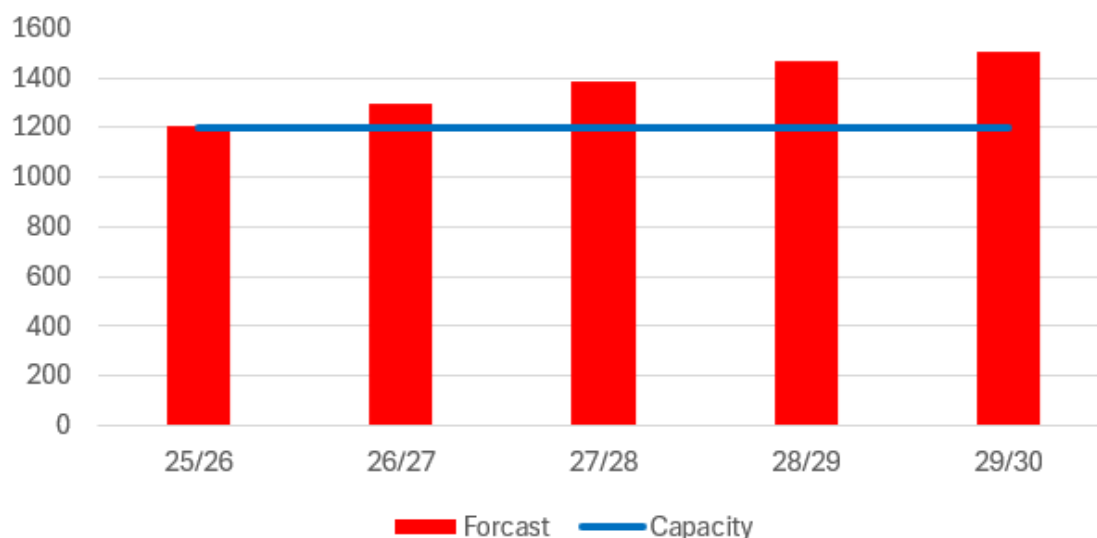


A map showing the Enderby Secondary planning area. There is 1 school. The table below provides the map reference numbers alongside relevant school names.

Table 9 showing map number and school name

School Name	DfE Number	Status
4 - Brockington College	4506	Academy Convertor

8551160 Enderby Secondary



A chart showing forecast pupil numbers for 2025-2030 against a fixed capacity line. Capacity remains at 1,200 each year. Full data is provided in the table below.

Table 10 provides a full breakdown of the data presented in the chart above, including totals and school-level breakdowns.

Forecast Data	AN	Cap	25/26	26/27	27/28	28/29	29/30
Brockington College	240	1200	1208	1295	1382	1465	1507
Total:	240	1200	1208	1295	1382	1465	1507

Current Overview

4506 Brockington College – Growing deficit but school has an average of 55 non-catchment pupils from County and City pupils. There is a Large SUE development (New Lubbesthorpe) which is due to have its own Secondary School on site circa Sep 2029

Future Actions

4506 Brockington College - would look to push back pupils to catchment schools. We are in discussions with Enderby Brockington to have Lubbesthorpe primary as a feeder school.

8551019 Braunstone Town Secondary: 4023 – Braunstone Winstanley currently supply 30% of Brockington's out of catchment, although its 4.5 miles away and also in proximity to large housing development referred to above.

Planning Area Data – Syston Secondary

Planning area name:

Syston Secondary

Number:

855 1004

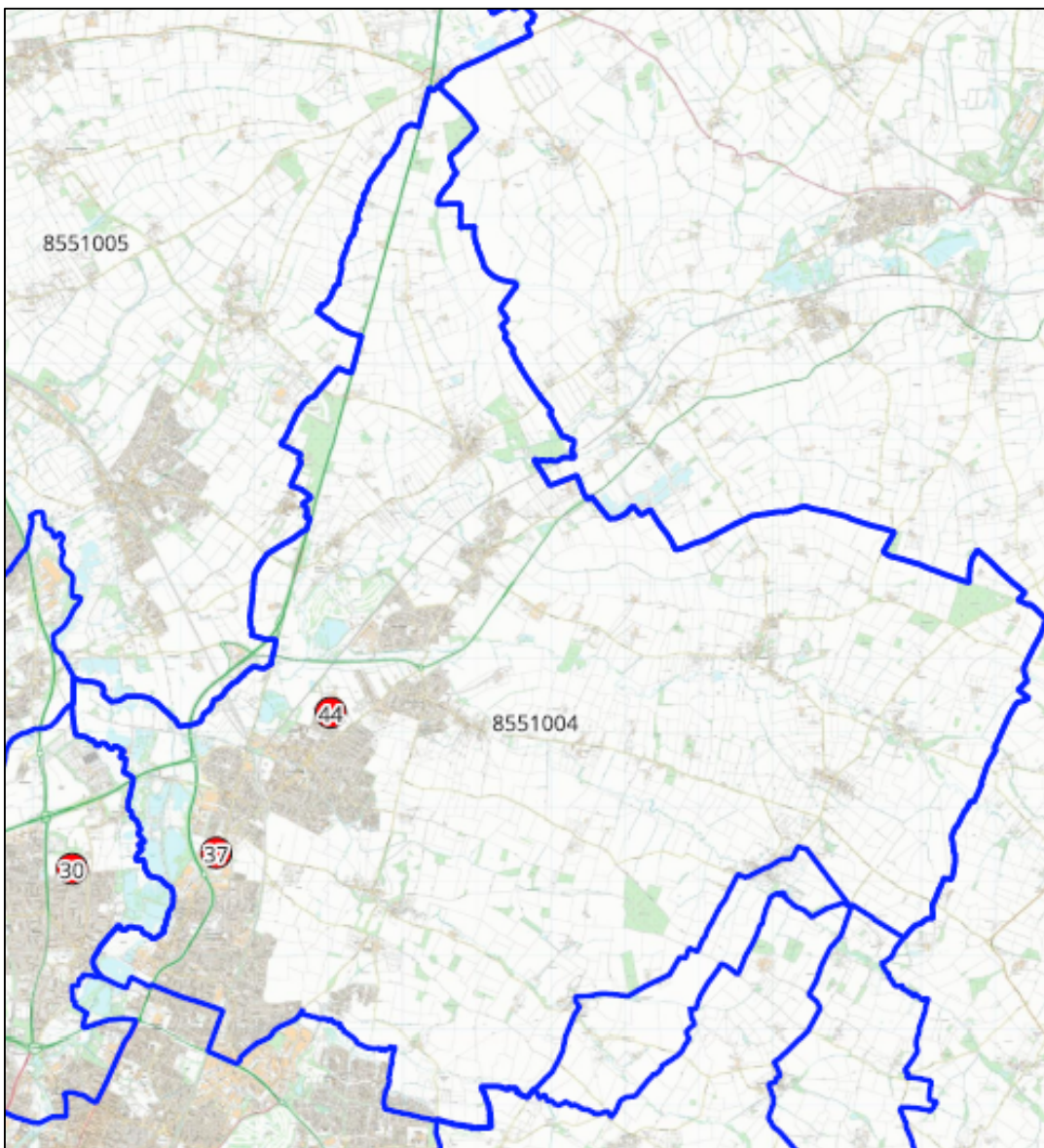
District Area:

Charnwood Borough Council

Schools:

2

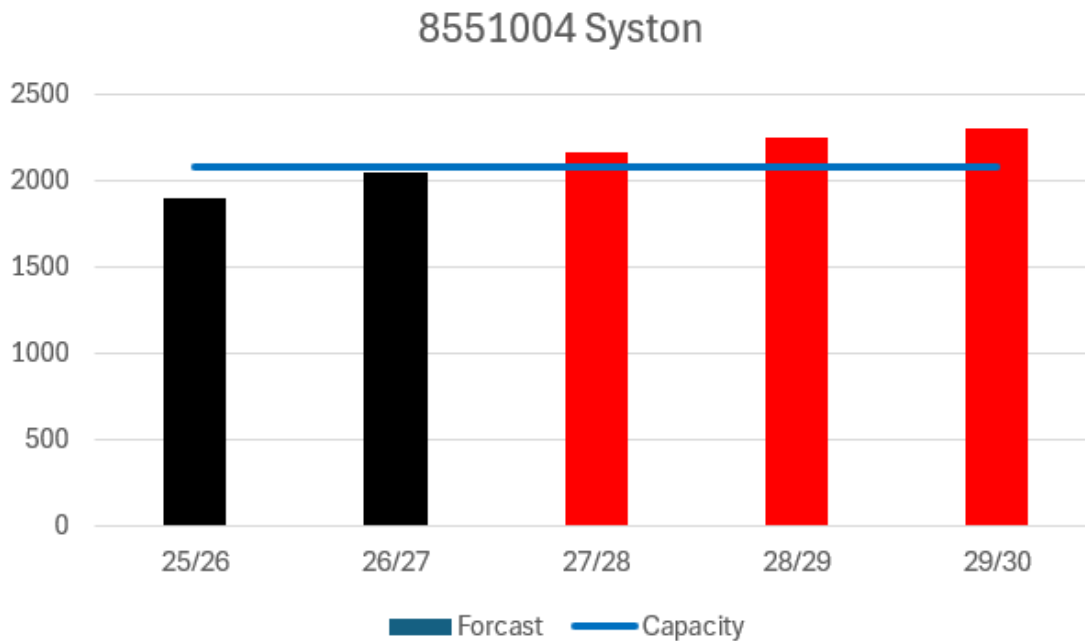
There are two secondary schools in Syston Planning Area. Both secondary schools are Academies.



A map showing the Syston planning area. There are 2 schools. The table below provides the map reference numbers alongside relevant school names.

Table 11 showing map number and school name

School Name	DfE Number	Status
37 - The Roundhill Academy	4022	Academy Convertor
44 - Wreake Valley Academy	4049	Academy Convertor



A chart showing forecast pupil numbers for 2025-2030 against a fixed capacity line. Capacity remains at 2,083 each year. Full data is provided in the table below.

Table 12 provides a full breakdown of the data presented in the chart above, including totals and school-level breakdowns.

Forecast Data	AN	Cap	25/26	26/27	27/28	28/29	29/30
The Roundhill Academy	150	750	711	726	751	788	808
Wreake Valley Academy	210	1333	1194	1322	1413	1468	1499
Total:	360	2083	1905	2048	2164	2256	2307

Current Overview

Overall, there is a deficit forecast in this planning area with both secondary schools forecast to have demand for places higher than their admission number.

Future Actions

There are options being discussed to accommodate secondary education in the area between the LA, District Councils and Academy Trust.

Planning Area Data – Barrow & Quorn

Planning area name:

Barrow & Quorn

Number:

855 1005

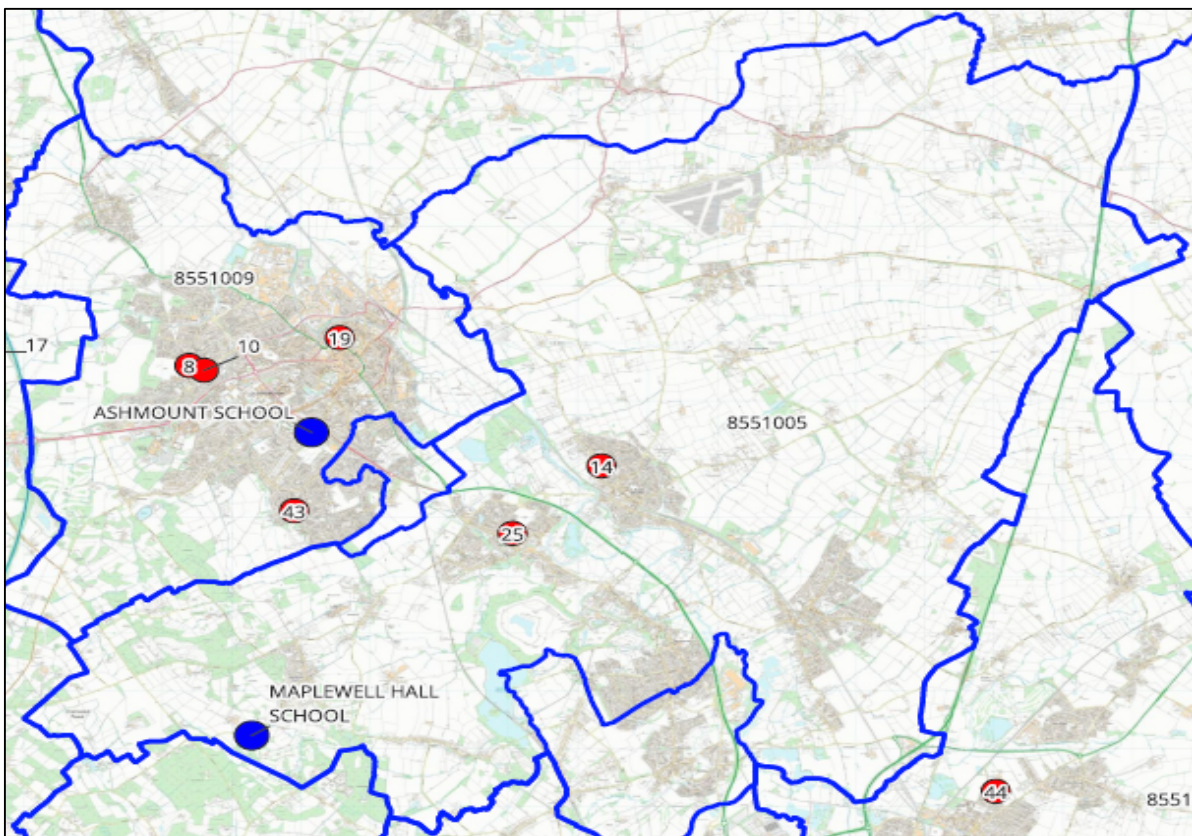
District Area:

Charnwood Borough Council

Schools:

2

There are two secondary schools in Barrow & Quorn Planning Area. Both secondary schools are Academies.

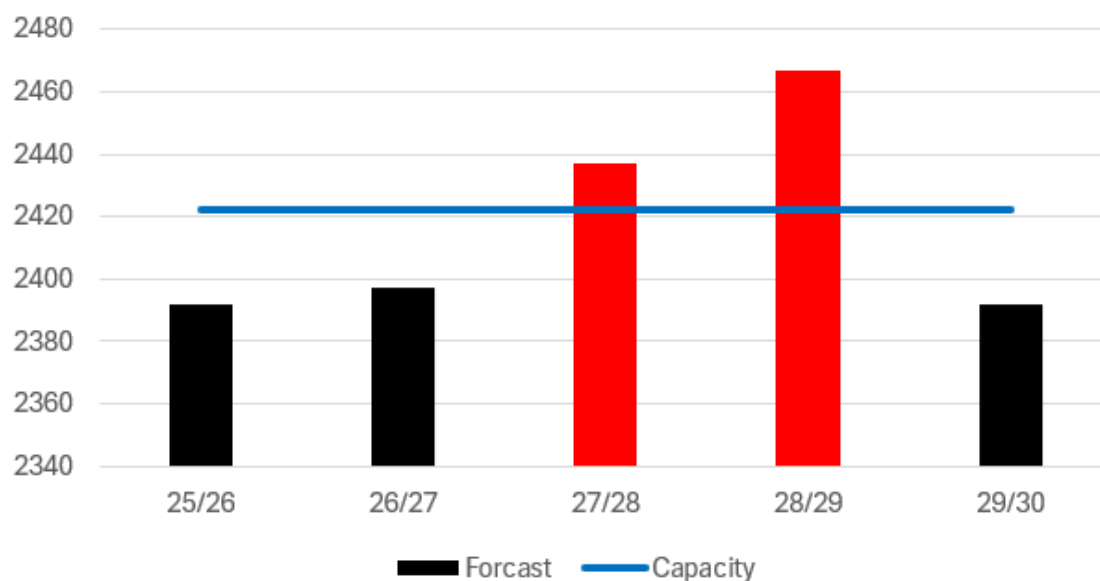


A map showing the Barrow & Quorn planning area. There are 2 schools. The table below provides the map reference numbers alongside relevant school names.

Table 13 showing map number and school name

School Name	DfE Number	Status
14 - Humphrey Perkins School	4000	Academy Convertor
25 - Rawlins Academy	4505	Academy Convertor

8551005 Barrow & Quorn



A chart showing forecast pupil numbers for 2025-2030 against a fixed capacity line. Capacity remains at 2,422 each year. Full data is provided in the table below.

Table 13 provides a full breakdown of the data presented in the chart above, including totals and school-level breakdowns.

Forecast Data	AN	Cap	25/26	26/27	27/28	28/29	29/30
Humphrey Perkins School	180	900	956	999	1058	1092	956
Rawlins Academy	240	1522	1436	1398	1379	1375	1436
Total:	420	2422	2392	2397	2437	2467	2392

Current Overview

Overall, there is a deficit forecast for Humphrey Perkins in this planning area.

Future Actions

4000 Humphrey Perkins are working closely with the LA to develop the campus and increase capacity – ongoing.

4505 Rawlins Academy have successfully applied to be part of the next round of the Schools Rebuilding Programme a feasibility study of the whole school has been undertaken by the DfE with a view to rebuilding the school.

Planning Area Data – Birstall

Planning area name:

Birstall

Number:

855 1006

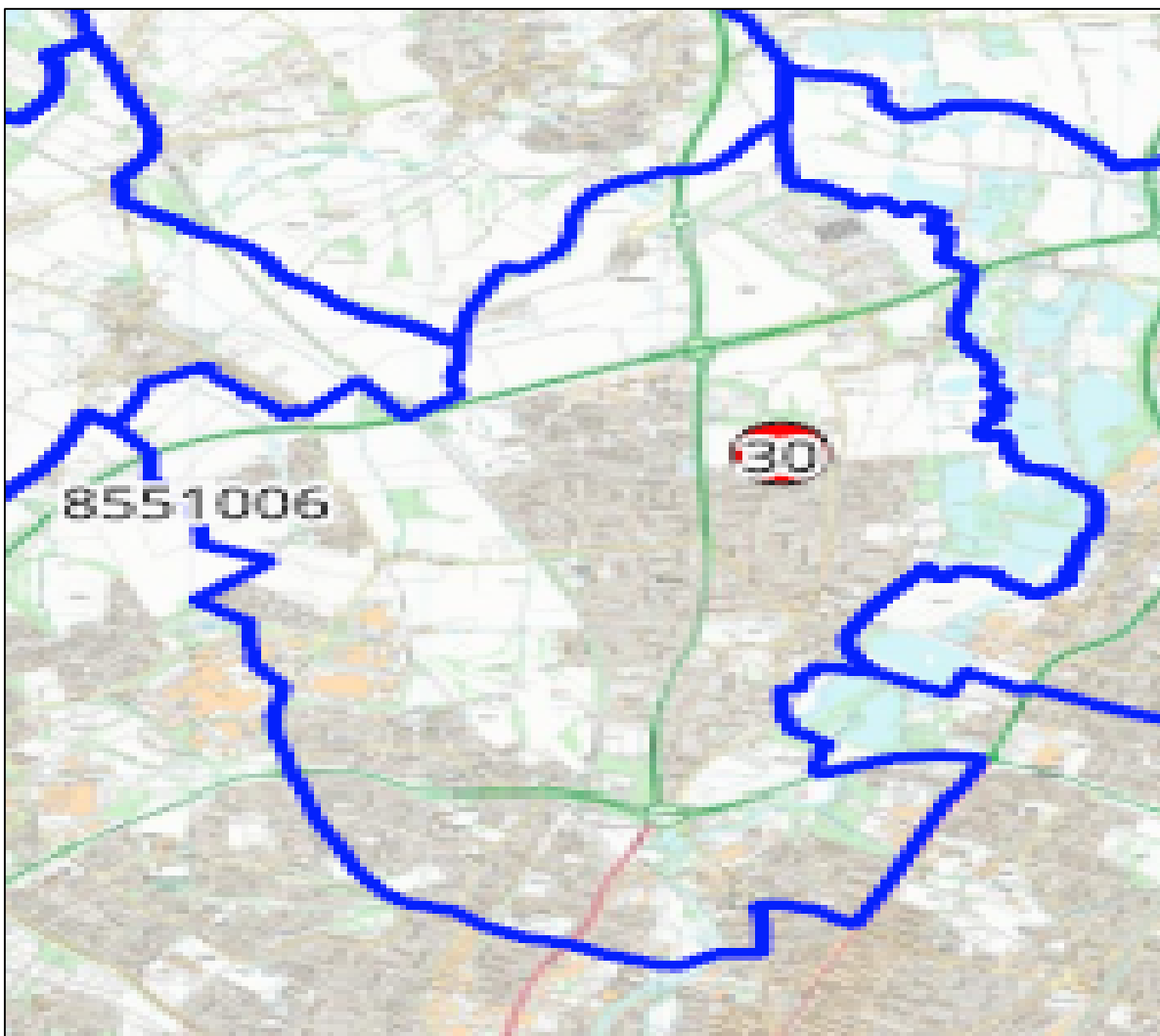
District Area:

Charnwood Borough Council

Schools:

1

There is one secondary school in Birstall. The secondary schools is an Academy.

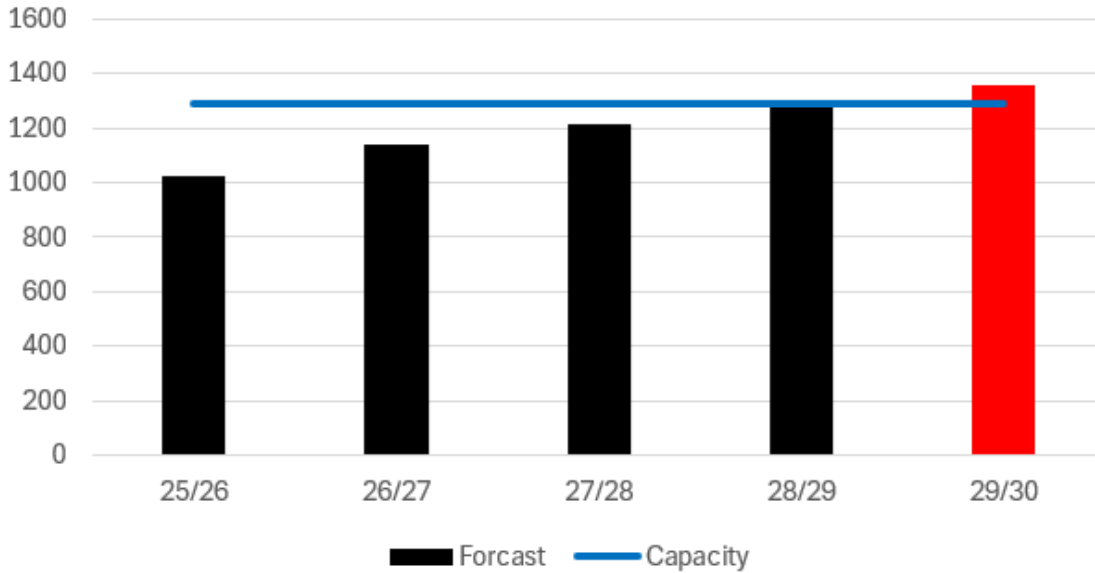


A map showing the Birstall planning area. There is 1 school. The table below provides the map reference numbers alongside relevant school names.

Table 15 showing map number and school name

School Name	DfE Number	Status
30 - The Cedars Academy	4029	Academy Convertor

8551006 Birstall



A chart showing forecast pupil numbers for 2025-2030 against a fixed capacity line. Capacity remains at 1,289 each year. Full data is provided in the table below.

Table 16 provides a full breakdown of the data presented in the chart above, including totals and school-level breakdowns.

Forecast Data	AN	Cap	25/26	26/27	27/28	28/29	29/30
The Cedars Academy	190	1289	1021	1137	1213	1298	1355
Total:	190	1289	1021	1137	1213	1298	1355

Current Overview

Cedars Academy is forecasting a deficit of places by 2028/29 due to a large housing development in the area which is under construction. Section 106 funding secured to commission additional places.

Future Actions

Keep a watching brief on pupil forecast.

Planning Area Data – Loughborough

Planning area name:

Loughborough

Number:

855 1009

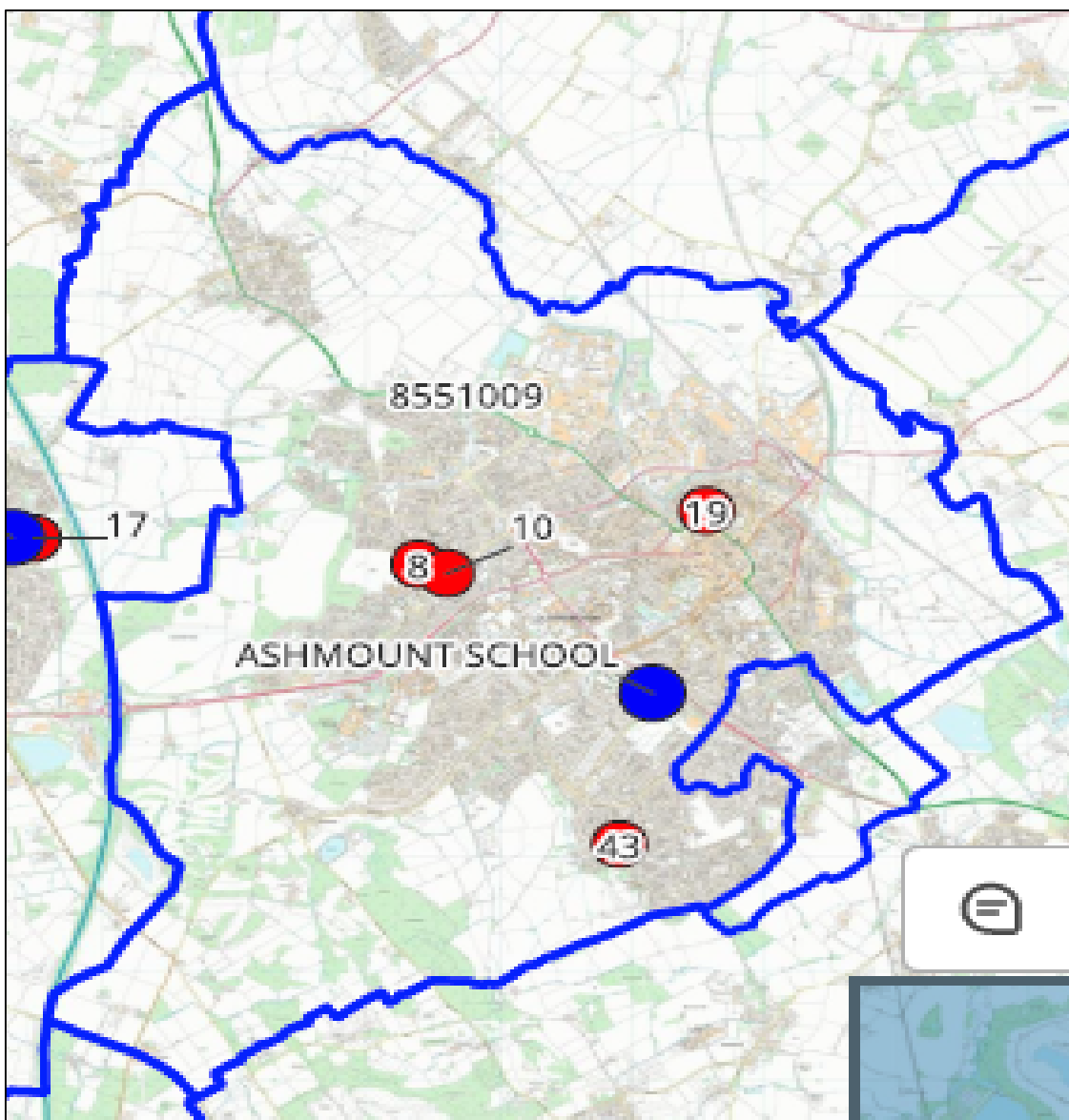
District Area:

Charnwood Borough Council

Schools:

4

There are four secondary schools in Loughborough. All four of the secondary schools are Academies.

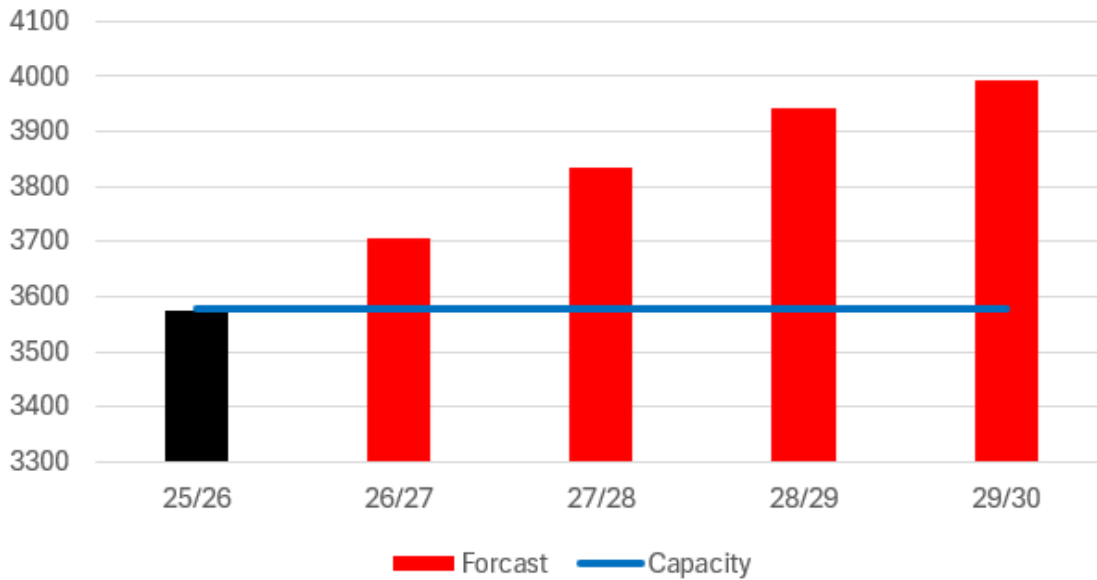


A map showing the Loughborough planning area. There are 4 schools. The table below provides the map reference numbers alongside relevant school names.

Table 14 showing map number and school name

School Name	DfE Number	Status
8 - Charnwood College	4021	Academy Convertor
10 - De Lisle College Loughborough Leicestershire	4601	Academy Convertor
19 - Limehurst Academy	4014	Academy Convertor
43 - Woodbrook Vale School	4268	Academy Convertor

8551009 Loughborough



A chart showing forecast pupil numbers for 2025-2030 against a fixed capacity line. Capacity remains at 3,578 each year. Full data is provided in the table below.

Table 18 provides a full breakdown of the data presented in the chart above, including totals and school-level breakdowns.

Forecast Data	AN	Cap	25/26	26/27	27/28	28/29	29/30
Charnwood College	120	840	710	803	882	958	985
De Lisle College Loughborough Leicestershire	220	1308	1378	1396	1425	1438	1448
Limehurst Academy	135	600	648	658	662	678	682
Woodbrook Vale School	160	830	839	850	865	869	877
Total:	635	3578	3575	3707	3834	3943	3992

Current Overview

Overall, there is a forecast deficit of secondary places in this development group, and all schools are forecast to have demand for places higher than their admission number.

Future Actions

There is significant housing under construction and planned for Loughborough. S106 funding secured to commission future places in the area.

Planning Area Data – Shepshed

Planning area name:

Shepshed

Number:

855 1025

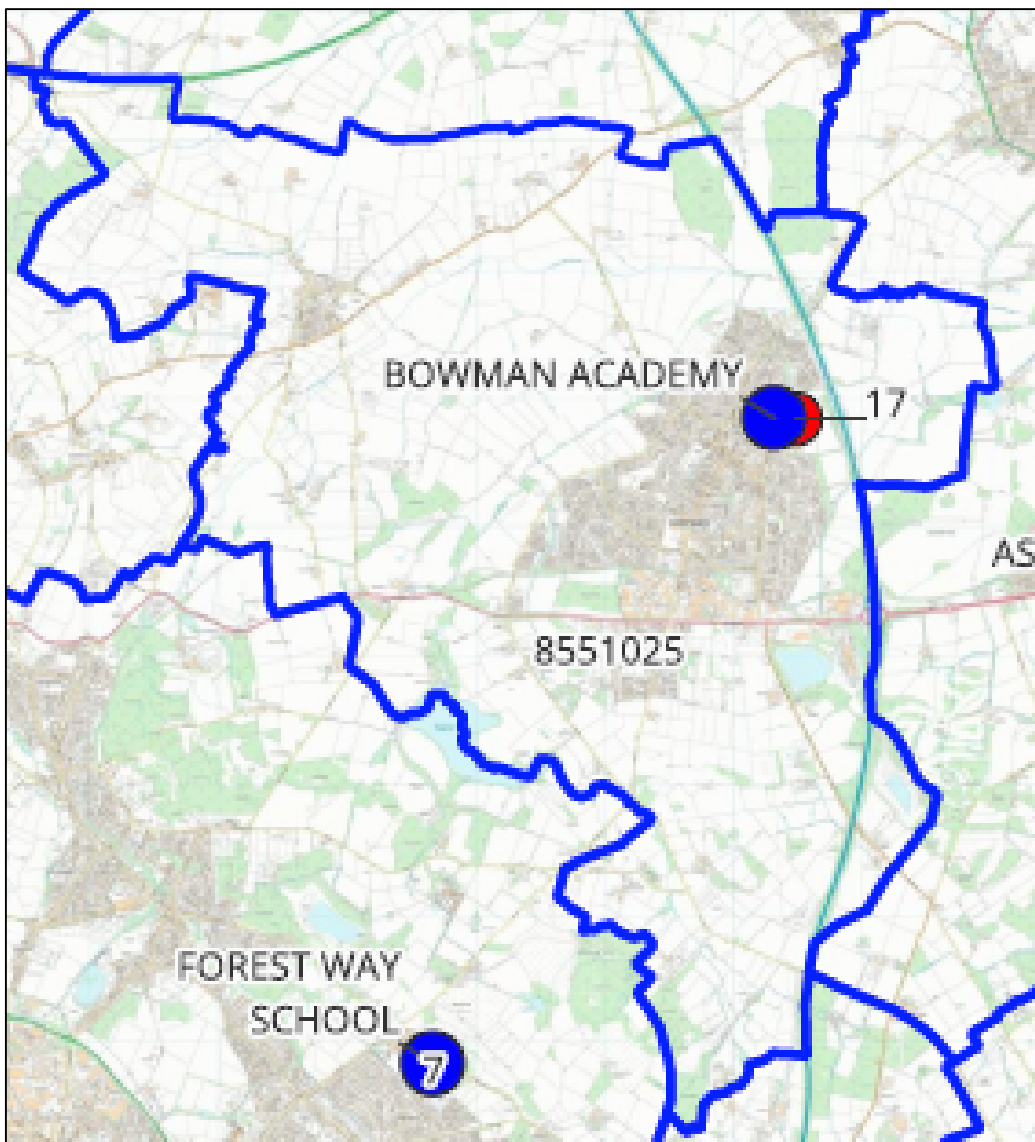
District Area:

Charnwood Borough Council

Schools:

1

There is one secondary school in Shepshed which is an Academy.

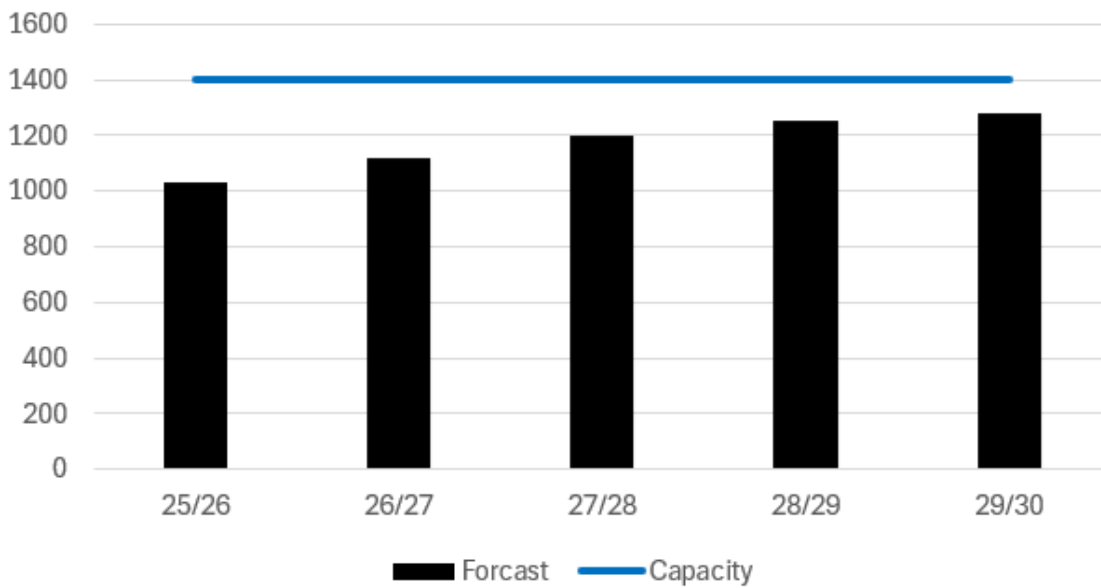


A map showing the Shepshed planning area. There is 1 school. The table below provides the map reference numbers alongside relevant school names.

Table 15 showing map number and school name

School Name	DfE Number	Status
17 - Iveshead School	4056	Academy Convertor

8551025 Shepshed



A chart showing forecast pupil numbers for 2025-2030 against a fixed capacity line. Capacity remains at 1,400 each year. Full data is provided in the table below.

Table 20 provides a full breakdown of the data presented in the chart above, including totals and school-level breakdowns.

Forecast Data	AN	Cap	25/26	26/27	27/28	28/29	29/30
Iveshead School	240	1400	1032	1116	1202	1251	1282
Total:	240	1400	1032	1116	1202	1251	1282

Current Overview

Overall, there is sufficient secondary places in this development group.

Future Actions

There is significant housing proposed in Shepshed.

Planning Area Data – Anstey

Planning area name:

Anstey

Number:

855 1270

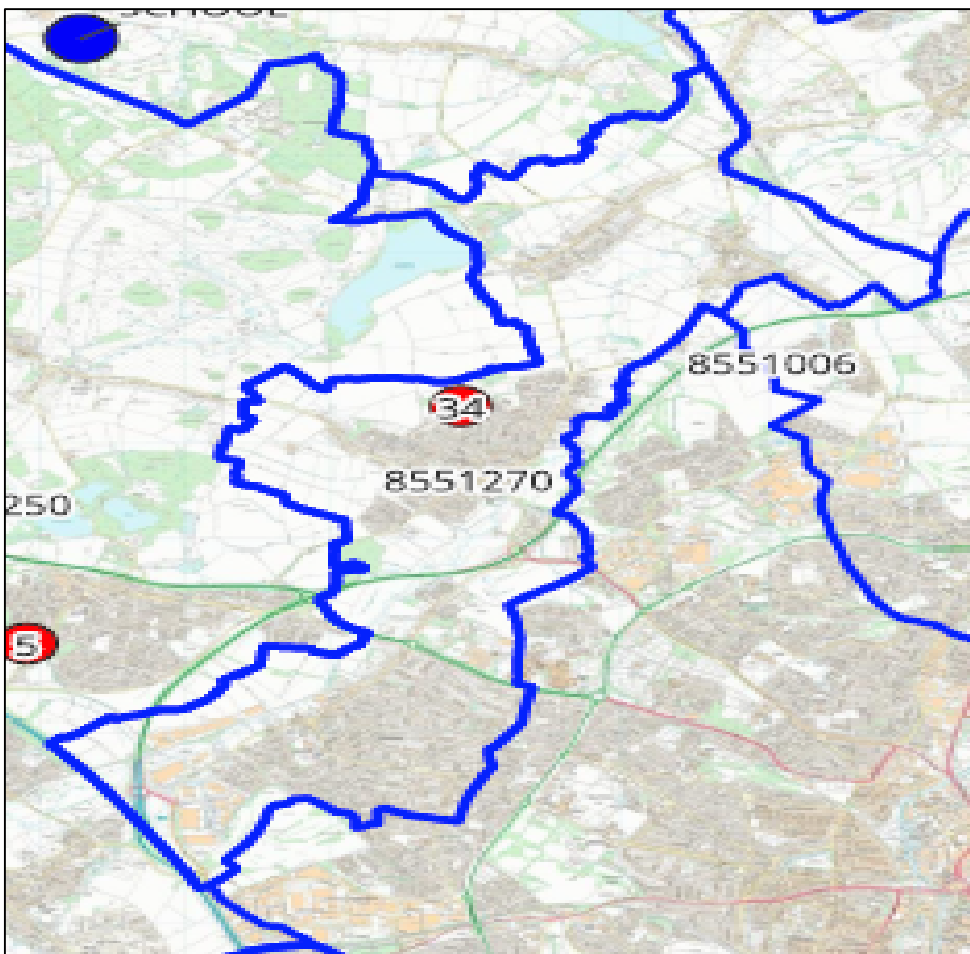
District Area:

Charnwood Borough Council

Schools:

1

There is one secondary school in Anstey which is an Academy.

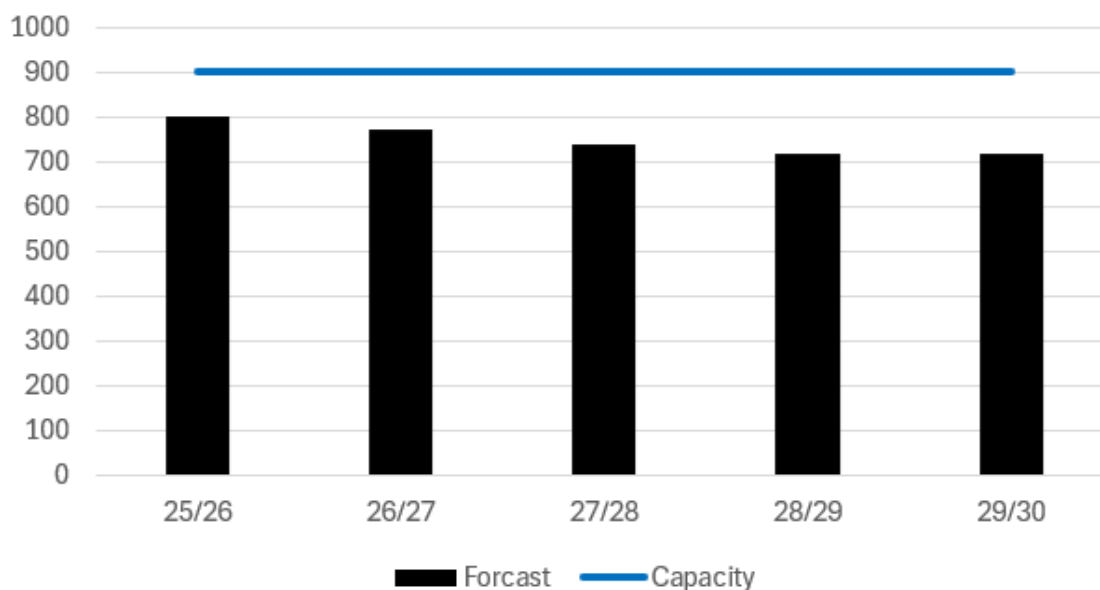


A map showing the Anstey planning area. There is 1 school. The table below provides the map reference numbers alongside relevant school names.

Table 21 showing map number and school name

School Name	DfE Number	Status
34 - The Martin High School	4032	Academy Convertor

8551270 Anstey



A chart showing forecast pupil numbers for 2025-2030 against a fixed capacity line. Capacity remains at 900 each year. Full data is provided in the table below.

Table 22 provides a full breakdown of the data presented in the chart above, including totals and school-level breakdowns.

Forecast Data	AN	Cap	25/26	26/27	27/28	28/29	29/30
The Martin High School	180	900	802	774	741	717	719
Total:	180	900	802	774	741	717	719

Current Overview

Overall, there is sufficient secondary places in this development group.

Future Actions

There is significant housing proposed in Anstey as part of Charnwood Borough Council's Local Plan. The school has successfully applied to be part of the next round of the Schools Rebuilding Programme and once a feasibility study of the whole school has been undertaken by the DfE we will look to work with the Academy Trust and the DfE on how funding streams can be utilised to develop the campus.

Planning Area Data – Broughton Astley Secondary

Planning area name:

Broughton Astley Secondary

Number:

855 1136

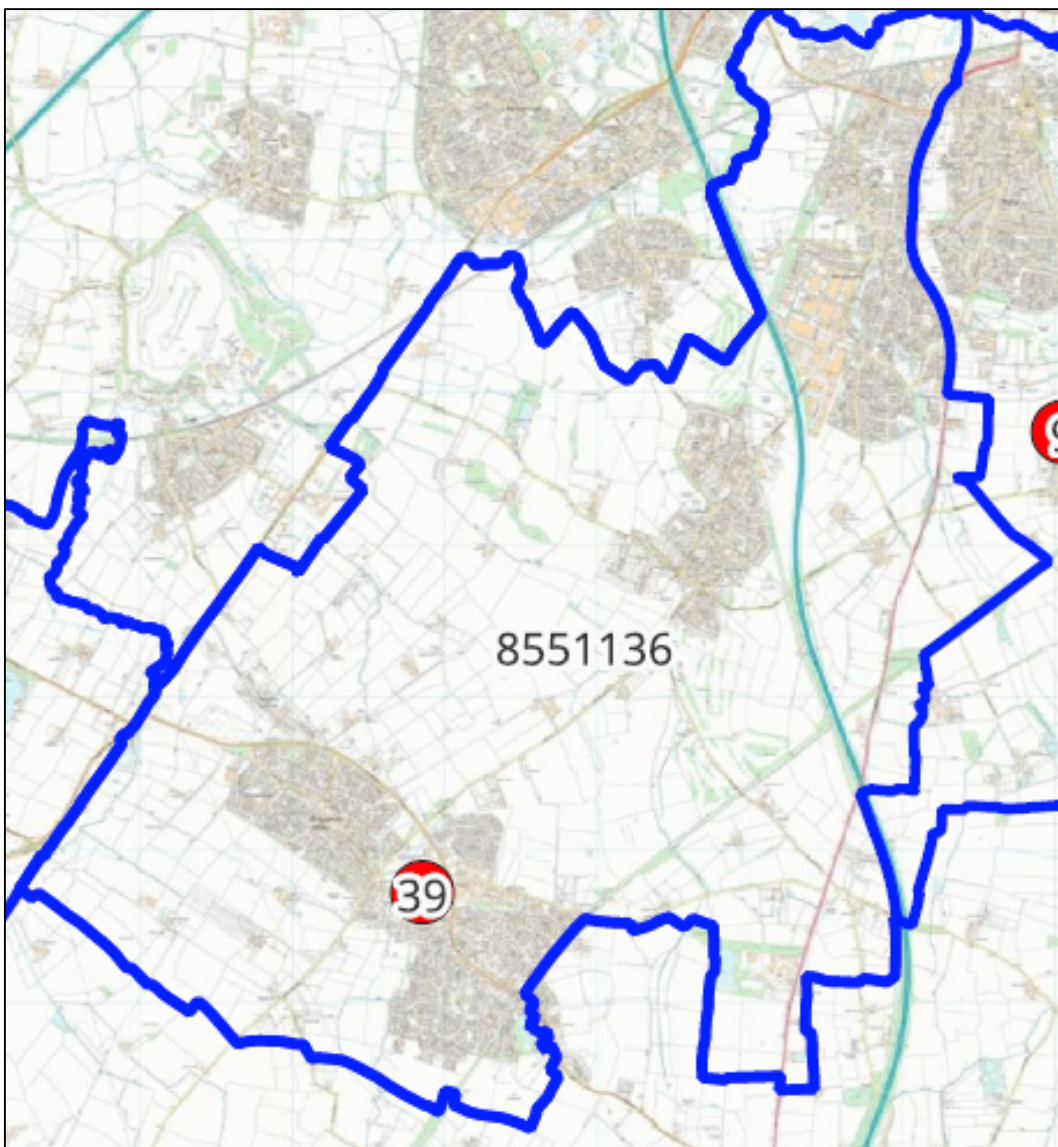
District Area:

Harborough District Council

Schools:

1

There is 1 secondary school in the Broughton Astley planning area.

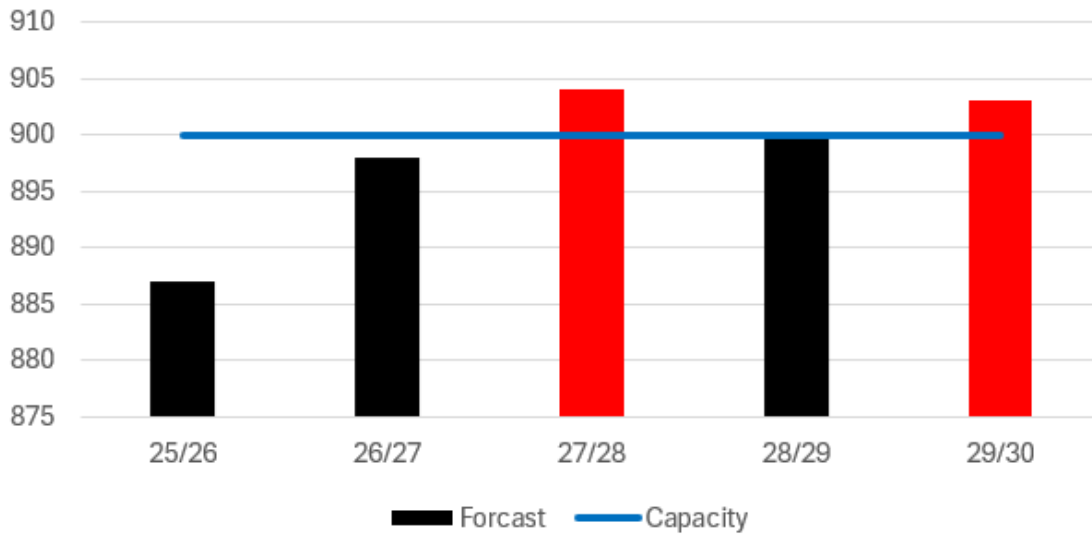


A map showing the Broughton Astley planning area. There is 1 school. The table below provides the map reference numbers alongside relevant school names.

Table 23 showing map number and school name

School Name	DfE Number	Status
39 - Thomas Estley Community College	855 4057	Academy Convertor

8551136 Broughton Astley Secondary



A chart showing forecast pupil numbers for 2025-2030 against a fixed capacity line. Capacity remains at 900 each year. Full data is provided in the table below.

Table 24 provides a full breakdown of the data presented in the chart above, including totals and school-level breakdowns.

Forecast Data	AN	Cap	25/26	26/27	27/28	28/29	29/30
Thomas Estley Community College	180	900	887	898	904	900	903
Total:	180	900	887	898	904	900	903

Current Overview

A popular area, with one local secondary school in the area.

Future Actions

Discussions have commenced to increase PAN to 190 across all year groups. This will meet the need of the local community in the forthcoming years. This site is constrained and shared site with a family hub, preschool and 2FE primary school.

Planning Area Data – Market Harborough Secondary

Planning area name:

Market Harborough Secondary

Number:

855 1150

District Area:

Harborough District Council

Schools:

2

There are 2 secondary schools in the Market Harborough planning area.

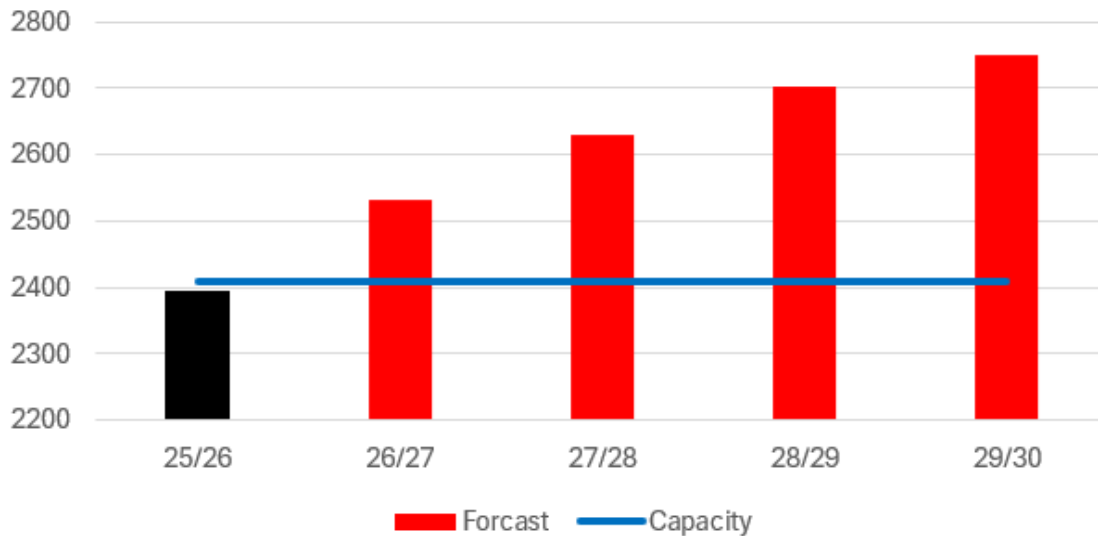


A map showing the Market Harborough planning area. There are 2 schools. The table below provides the map reference numbers alongside relevant school names.

Table 25 showing map number and school name

School Name	DfE Number	Status
36 - The Robert Smyth Academy	855 4003	Academy Convertor
40 - Welland Park Academy	855 4017	Academy Convertor

8551150 Market Harborough Secondary



A chart showing forecast pupil numbers for 2025-2030 against a fixed capacity line. Capacity remains at 2,410 each year. Full data is provided in the table below.

Table 26 provides a full breakdown of the data presented in the chart above, including totals and school-level breakdowns.

Forecast Data	AN	Cap	25/26	26/27	27/28	28/29	29/30
The Robert Smyth Academy	210	1360	1356	1405	1445	1461	1471
Welland Park Academy	210	1050	1038	1128	1186	1242	1278
Total:	420	2410	2394	2533	2631	2703	2749

Current Overview

Significant ongoing housing development in planning area. S106 contributions secured for expansion of existing secondaries. Due to the increasing costs of capital works, S106 monies secured against developments is not sufficient to deliver the amount of infrastructure required within Market Harborough. Additional funding is required to support delivery of additional pupil places.

Future Actions

4017 Welland Park Academy. School is experiencing increased demand for secondary school places. LCC has commissioned Welland Park to expand to a PAN of 240. Increase of school places to commence for 2026/27. Once this site is expanded to 240, there will be no further room for expansion – site will be at its limits.

4003 Robert Smyth Academy. The school is currently in the process of delivering capital works to expand from 180 to 210. These works were approved in 2022. Conversations to commence with the trust post summer break to expand from 210 to 240.

New site for future years is required to meet the needs of secondary demands within the town.

Planning Area Data – Kibworth Secondary

Planning area name:

Newbold Primary

Number:

855 1155

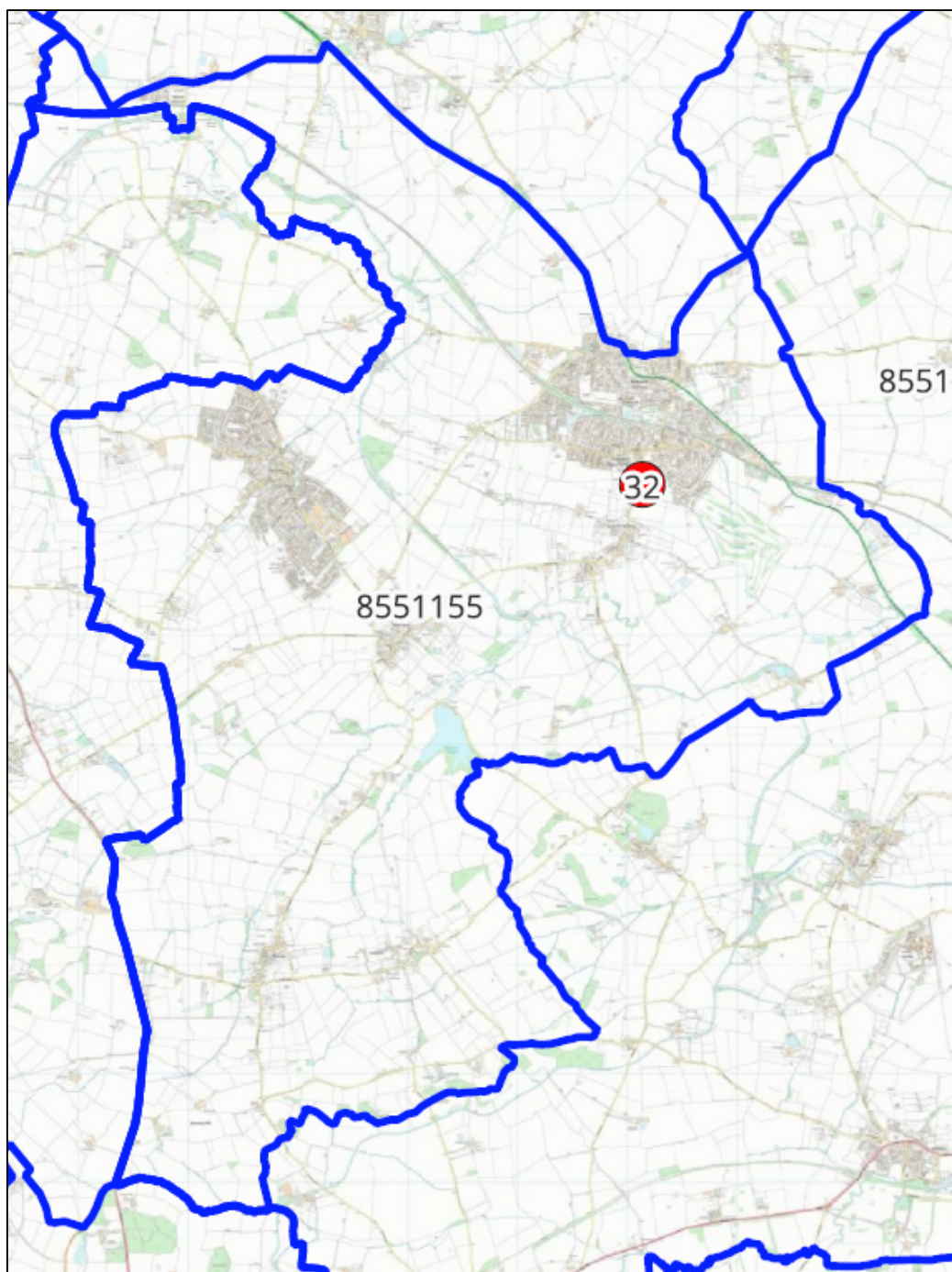
District Area:

Harborough District Council

Schools:

1

There 1 secondary school in the Kibworth planning area.

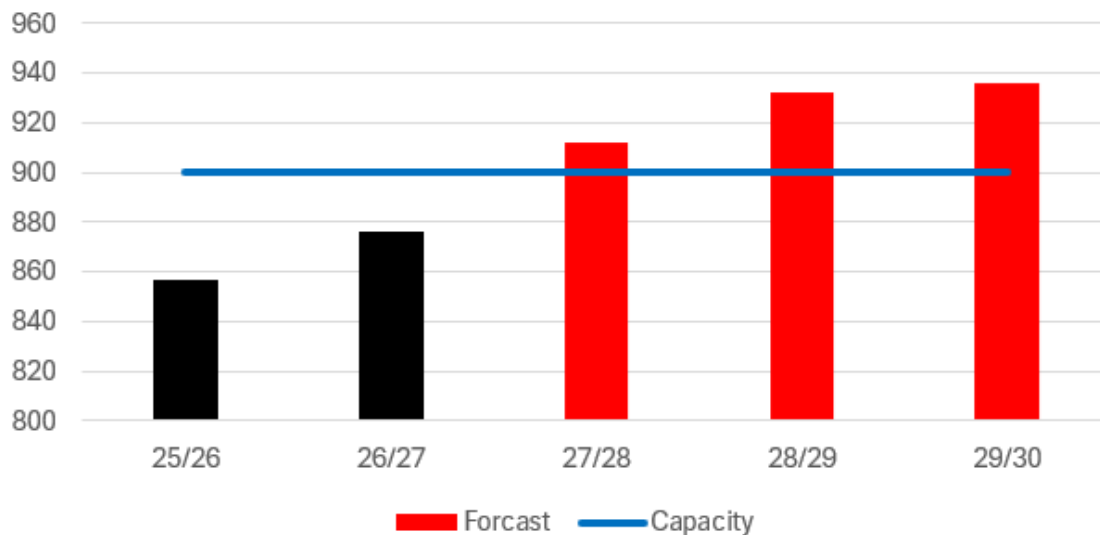


A map showing the Kibworth planning area. There is 1 school. The table below provides the map reference numbers alongside relevant school names.

Table 27 showing map number and school name

School Name	DfE Number	Status
32 - Kibworth Mead Academy	855 4055	Academy Convertor

8551155 Kibworth Secondary



A chart showing forecast pupil numbers for 2025-2030 against a fixed capacity line. Capacity remains at 900 each year. Full data is provided in the table below.

Table 28 provides a full breakdown of the data presented in the chart above, including totals and school-level breakdowns.

Forecast Data	AN	Cap	25/26	26/27	27/28	28/29	29/30
Kibworth Mead Academy	180	900	857	876	912	932	936
Total:	180	900	857	876	912	932	936

Current Overview

This Planning Area has one 11-16 secondary school with a relatively stable forecast with ongoing housing development in the area. Further housing growth is expected in the future.

Future Actions

4055 Kibworth Mead Academy sits on a constrained site with little scope for expansion. Area to be kept under watching brief regarding housing yield.

Planning Area Data – Lutterworth Secondary

Planning area name:

Lutterworth Secondary

Number:

855 1165

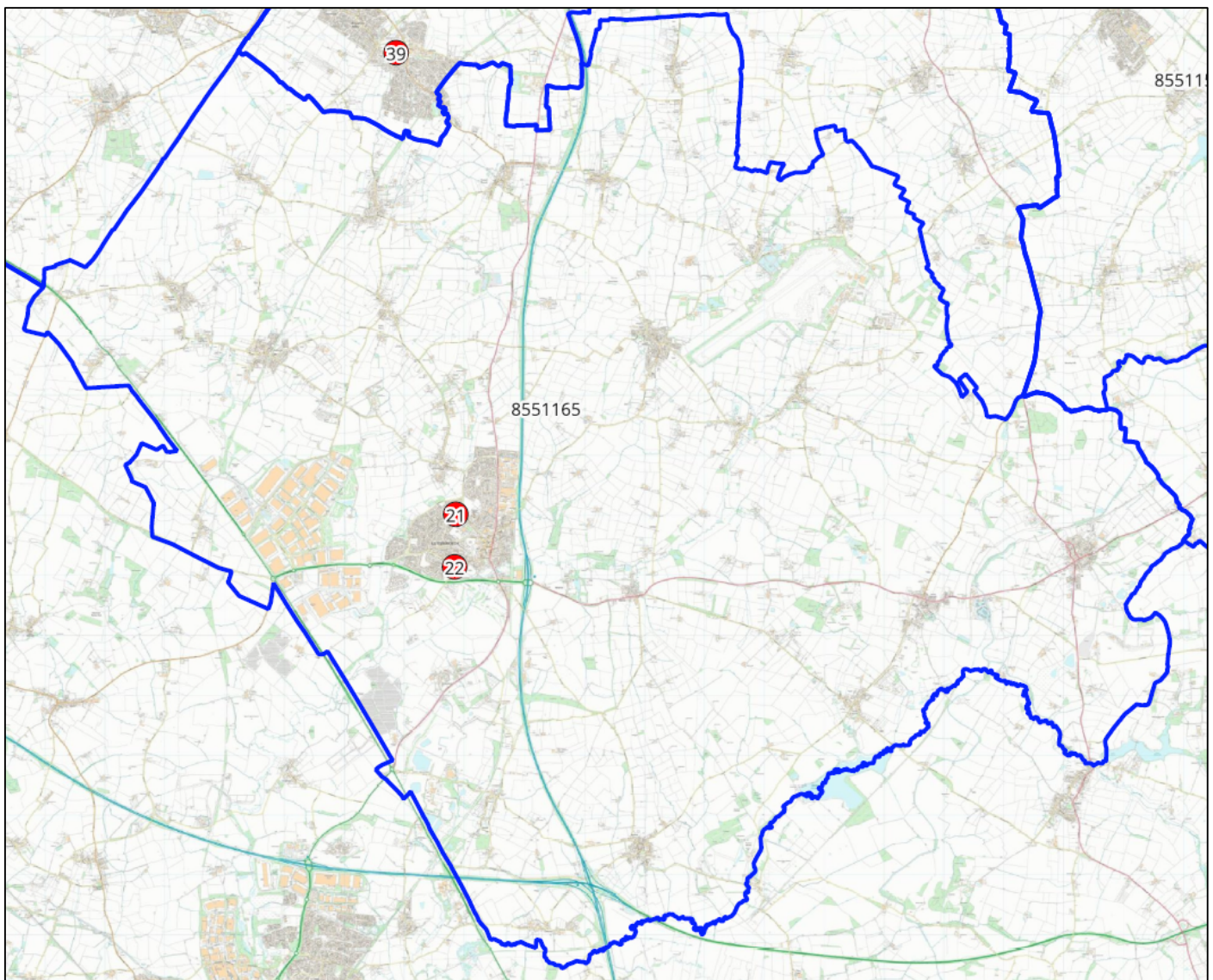
District Area:

Harborough District Council

Schools:

2

There are 2 secondary schools in the Lutterworth planning area.

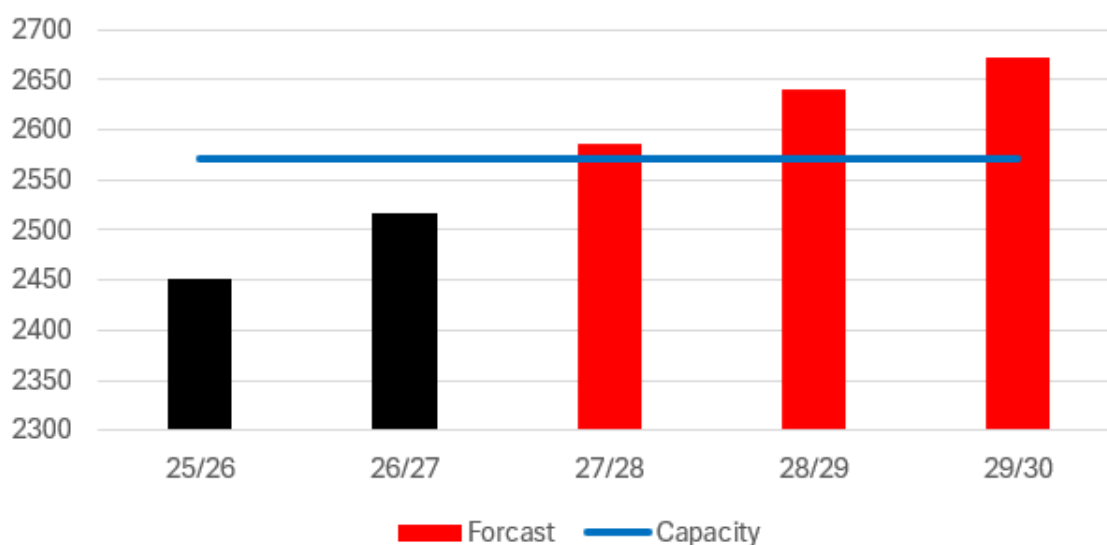


A map showing the Lutterworth planning area. There are 2 schools. The table below provides the map reference numbers alongside relevant school names.

Table 29 showing map number and school name

School Name	DfE Number	Status
22 - Lutterworth High School	855 4015	Academy Convertor
21 - Lutterworth College	855 4503	Academy Convertor

8551165 Lutterworth Secondary



A chart showing forecast pupil numbers for 2025-2030 against a fixed capacity line. Capacity remains at 2,571 each year. Full data is provided in the table below.

Table 30 provides a full breakdown of the data presented in the chart above, including totals and school-level breakdowns.

Forecast Data	AN	Cap	25/26	26/27	27/28	28/29	29/30
Lutterworth High School	175	771	857	874	898	910	915
Lutterworth College	240	1800	1595	1643	1688	1731	1758
Total:	415	2571	2452	2517	2586	2641	2673

Current Overview

Area subject to multiple housing developments. One of which is a large-scale development to the East of the town called Lutterworth East comprising of 2,750 dwellings. Start on site has been delayed due to viability issues. The impact of the development has not been included within the projections.

Section 106 contributions have been difficult to secure for both secondary schools in the area due to surplus capacity at 4503 Lutterworth College over previous years.

Now surplus capacity has been utilised; this is placing significant pressures on being able to supply sufficiency of school places with no capital funding available.

The forecast housing figures do not include the impacts of the large scale Lutterworth East Expansion of 2,750 dwellings.

CIF bid was submitted by Lutterworth High School to secure funding to expand current capacity to accommodate the number of pupils it is admitting per year group. The CIF was unsuccessful.

4015 Lutterworth High School are now in a position where they admit a total number of 175 pupils per year group. A significant change application for expansion was granted subject to a successful CIF bid to increase capacity in 2020; however, the school is yet to secure a successful bid. The school has submitted a CIF bid every year since the original submission however these have all been unsuccessful, including the latest round in 2024, the trust has submitted an appeal.

In the event of an unsuccessful appeal, the school will have to revert to a PAN of 150, which will make the school financially unviable and there will not be sufficient secondary aged school places within Lutterworth and the surrounding area. This will present a significant pressure of the secondary infrastructure within Lutterworth which is already facing significant pressures and demands.

A new site will be required in future years to meet the demands of secondary education within the planning area to serve both basic need and developments.

Future Actions

There is a high demand for secondary school places within the town, above the infrastructure available to meet the need of local pupils.

4503 Lutterworth College, has a lot of old infrastructure, which is starting to be condemned, putting pressure on the overall site. Whilst the trust is successful with CIF bids to replace, this issue needs to be noted and accounted for, as any additional capacity added will have to consider the condition of the existing. The site is generous, with a lot of external space and outbuildings which may be able to be utilised. Discussions commenced with the trust September 2024 as to how the trust can support the LA with adding additional secondary capacity into the area.

As above - Lutterworth High School is under pressure with the PAN, SIG change and ongoing NET capacity issues as highlighted above.

Planning Area Data – Desford Secondary

Planning area name:

Desford Secondary

Number:

855 1201

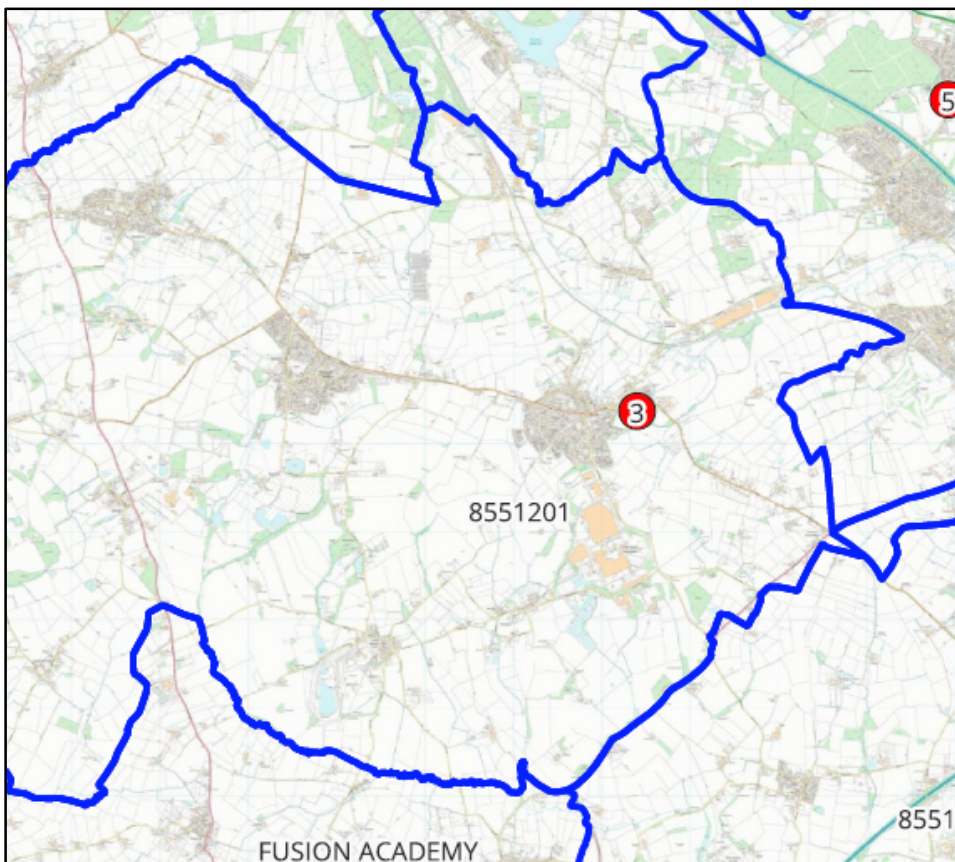
District Area:

Hinckley & Bosworth Borough Council

Schools:

1

There is 1 secondary school in the Desford Secondary planning area.

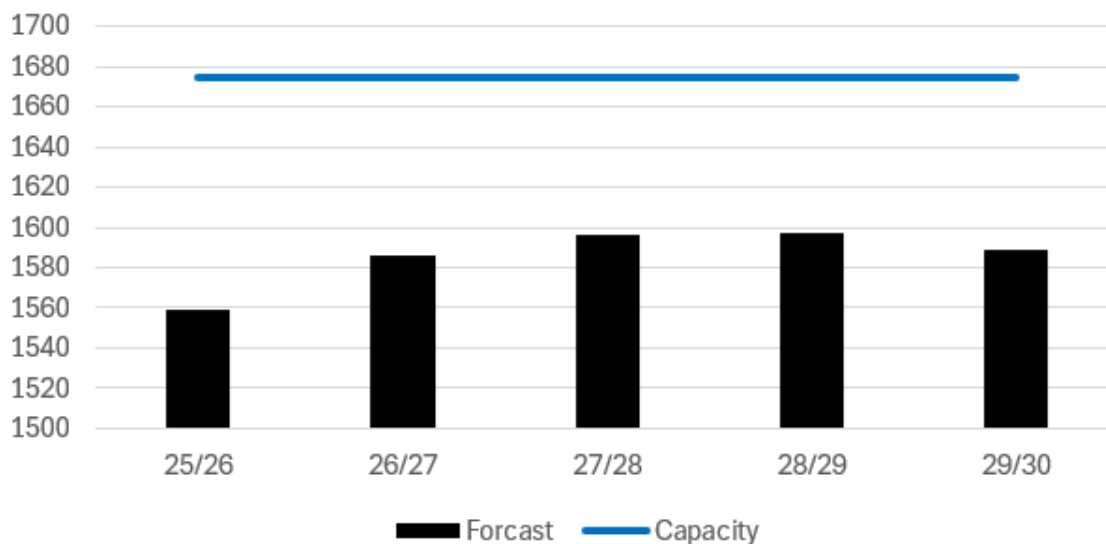


A map showing the Desford Secondary planning area. There is 1 school. The table below provides the map reference numbers alongside relevant school names.

Table 31 showing map number and school name

School Name	DfE Number	Status
3 - Bosworth Academy	855 4048	Academy Convertor

8551201 Desford Secondary



A chart showing forecast pupil numbers for 2025-2030 against a fixed capacity line. Capacity remains at 1,675 each year. Full data is provided in the table below.

Table 32 provides a full breakdown of the data presented in the chart above, including totals and school-level breakdowns.

Forecast Data	AN	Cap	25/26	26/27	27/28	28/29	29/30
Bosworth Academy	250	1675	1559	1586	1596	1597	1589
Total:	250	1675	1559	1586	1596	1597	1589

Current Overview

4048 – Bosworth Academy. Popular school with very large catchment area (Shared catchment area with 4016 Market Bosworth, 4023 Winstanley and (partially) with 4018 South Charnwood). Moderate levels of new housing development expected within the catchment area. 14% of NOR from out of catchment, 2% of NOR from out of County (mainly Leicester City).

Future Actions

4048 – Bosworth Academy. Keep a watching brief. Initiate conversations with Bosworth Academy about changing/reducing the catchment area and possible future expansion plans.

Planning Area Data – Groby Secondary

Planning area name:

Groby Secondary

Number:

855 1250

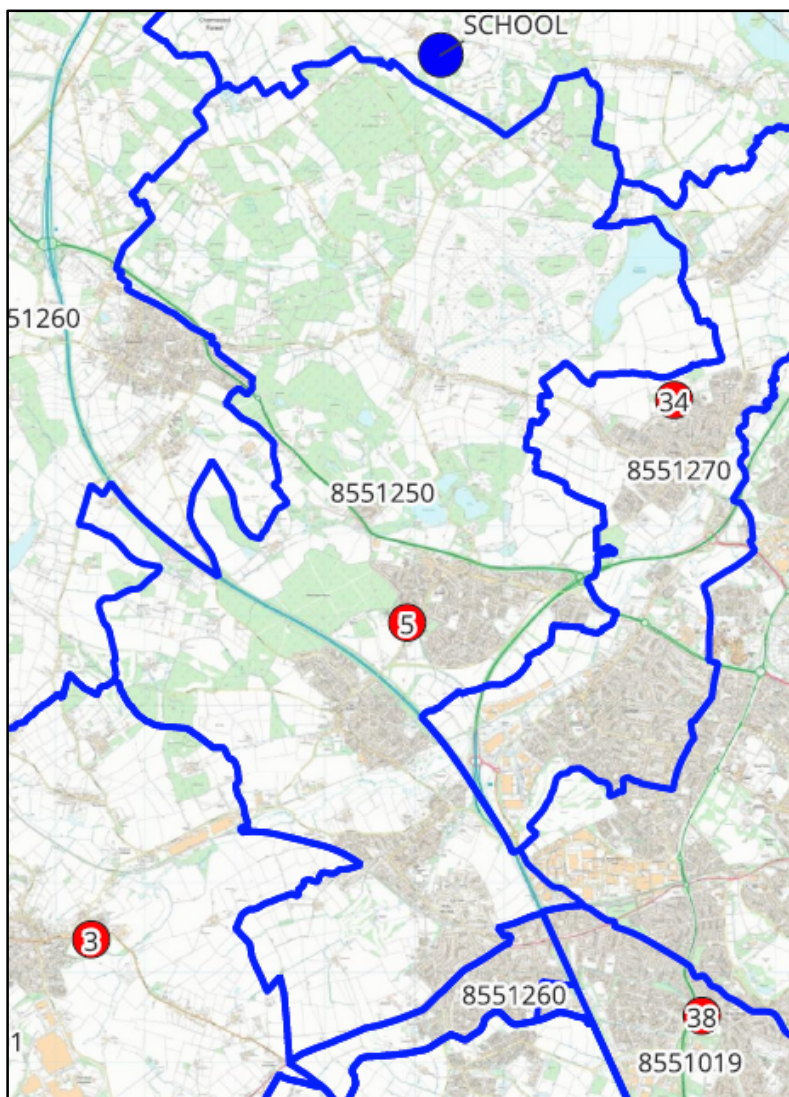
District Area:

Hinckley & Bosworth Borough Council

Schools:

1

There is 1 secondary school in the Groby Secondary planning area.

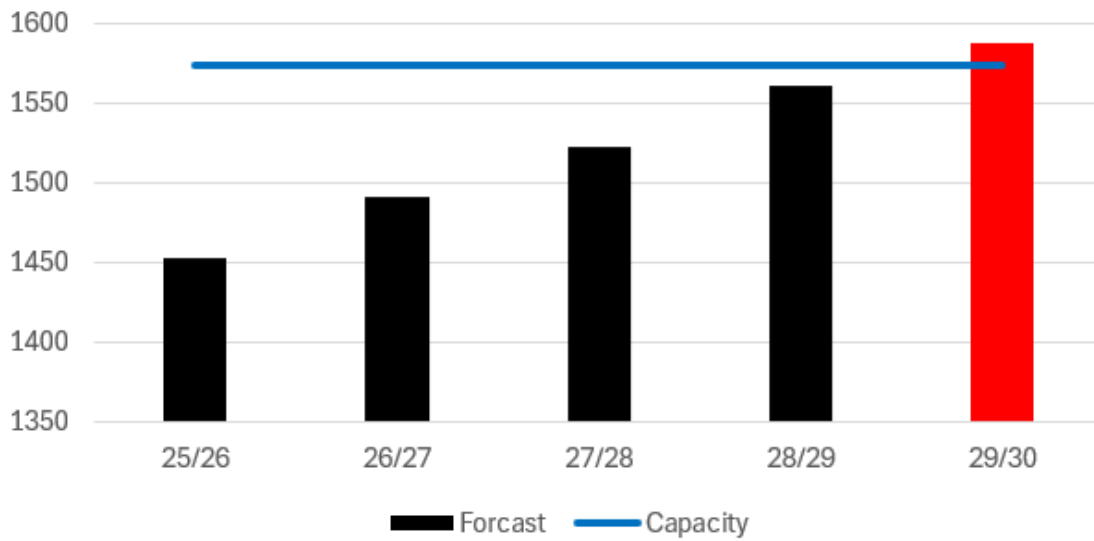


A map showing the Groby Secondary planning area. There is 1 school. The table below provides the map reference numbers alongside relevant school names.

Table 33 showing map number and school name

School Name	DfE Number	Status
5 - Brookvale Groby Learning Campus	855 4051	Academy Convertor

8551250 Groby Secondary



A chart showing forecast pupil numbers for 2025-2030 against a fixed capacity line. Capacity remains at 1,574 each year. Full data is provided in the table below.

Table 34 provides a full breakdown of the data presented in the chart above, including totals and school-level breakdowns.

Forecast Data	AN	Cap	25/26	26/27	27/28	28/29	29/30
Brookvale Groby Learning Campus	255	1574	1453	1491	1523	1561	1588
Total:	255	1574	1453	1491	1523	1561	1588

Current Overview

4051 – Brookvale Groby Learning Campus. Fairly consistent feeder cohort. Moderate level of new housing under construction but some is only associated with Post 16 gains. Additional, significant levels of housing expected. 34% NOR form out of catchment (13% out of catchment pupils are from out of county - Leicester City). 79% catchment retention.

Future Actions

4051 – Brookvale Groby Learning Campus. Small PAN increase from 255 to 270 from August 2025. A new 4 classroom block and additional toilets is now completed. Keep on watching brief.

Planning Area Data – Hinckley and Earl Shilton Secondary

Planning area name:

Hinckley and Earl Shilton Secondary

Number:

855 1021

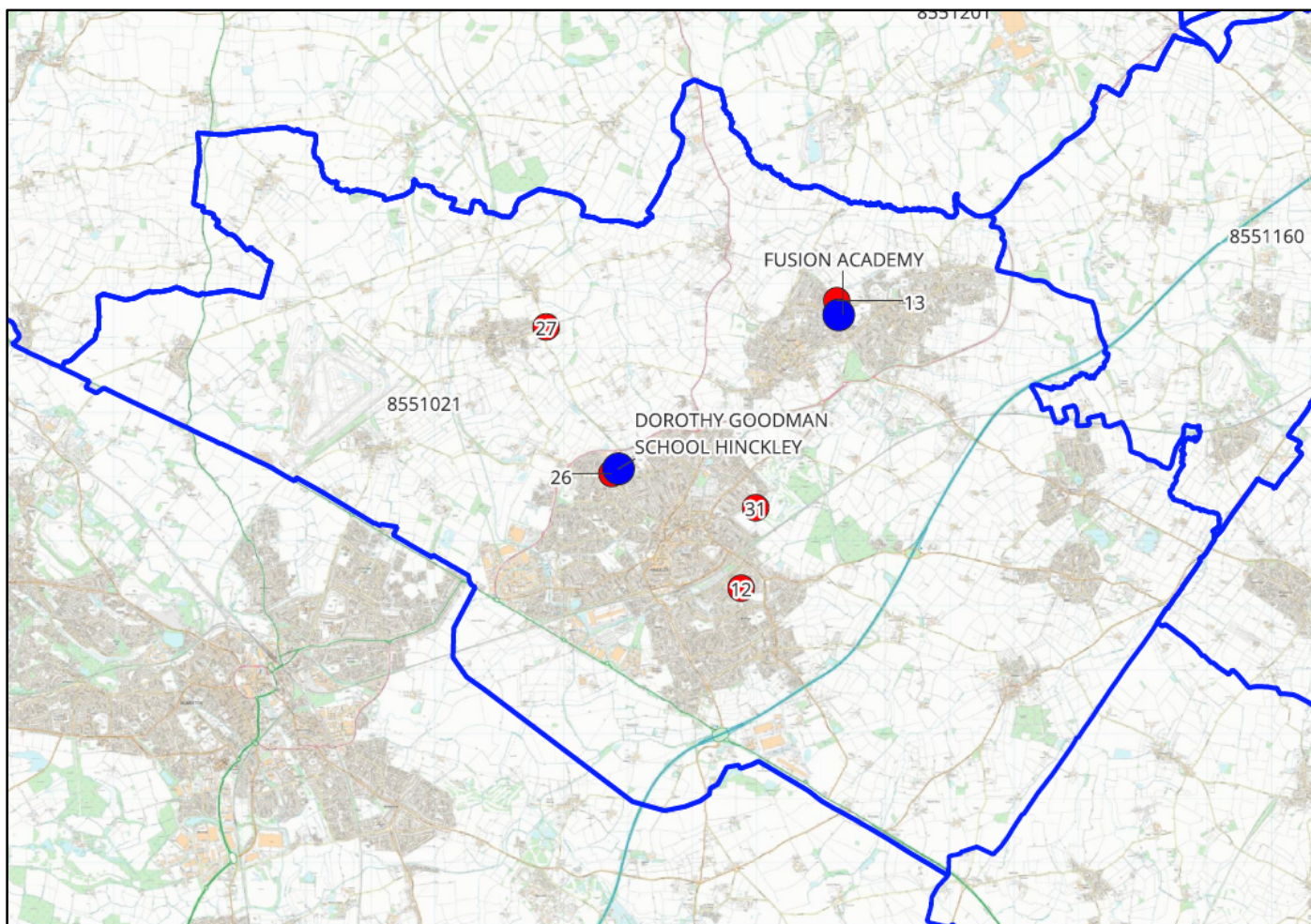
District Area:

Hinckley and Bosworth Borough Council

Schools:

5

There are 5 secondary schools in the Hinckley and Earl Shilton planning area.

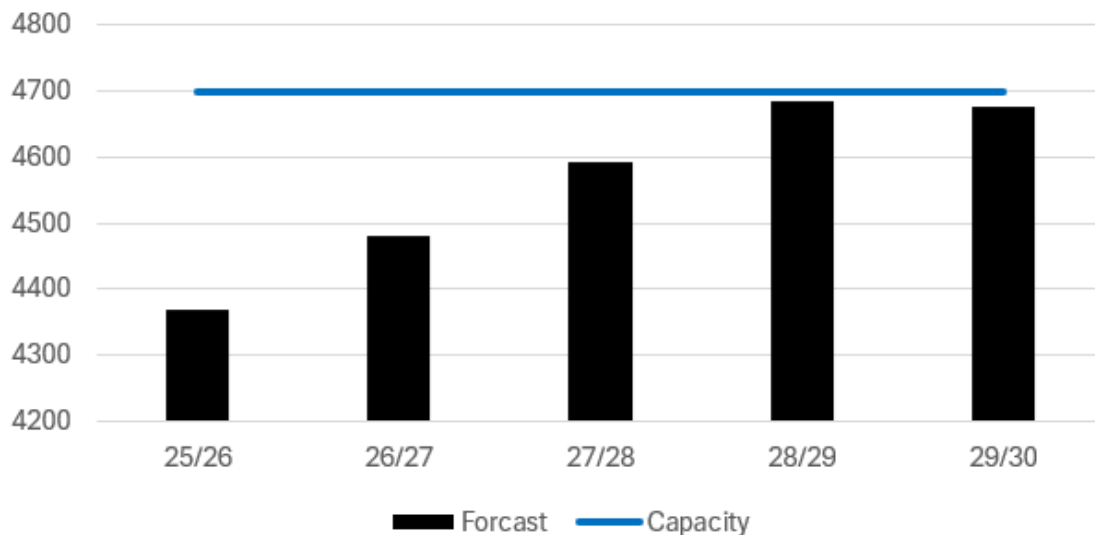


A map showing the Hinckley and Earl Shilton planning area. There are 5 schools. The table below provides the map reference numbers alongside relevant school names.

Table 35 showing map number and school name

School Name	DfE Number	Status
12 - Hastings High School	855 4026	Academy Convertor
13 - Heath Lane Academy	855 4011	Academy Convertor
31 - Hinckley Academy	855 4013	Academy Convertor
26 - Redmoor Academy	855 4023	Academy Convertor
27 - Saint Martin's Catholic Voluntary Academy	855 4602	Academy Convertor

8551021 Hinckley and Earl Shilton Secondary



A chart showing forecast pupil numbers for 2025-2030 against a fixed capacity line. Capacity remains at 4,700 each year. Full data is provided in the table below.

Table 36 provides a full breakdown of the data presented in the chart above, including totals and school-level breakdowns.

Forecast Data	AN	Cap	25/26	26/27	27/28	28/29	29/30
Hastings High School	200	1000	897	947	992	1027	1048
Heath Lane Academy	150	800	657	676	671	666	670
Hinckley Academy	180	1200	1089	1068	1065	1056	1000
Redmoor Academy	224	1120	1001	1082	1166	1248	1271
Saint Martin's Catholic Voluntary Academy	150	580	726	707	698	687	686
Total:	904	4700	4370	4480	4592	4684	4675

Current Overview

Large scale housing development approved in planning area with some S106 secured.

4026 – Hastings High School - Cohort sizes have been increasing and, for the forecast, are mostly above average. Significant levels of housing development are planned around the catchment area. 14% from outside catchment area. High levels of in catchment attendance. Additional facilities almost completed ready for August 2025.

4011- Heath Lane Academy – Some housing development within the local area and significant amounts expected with Earl Shilton and Barwell SUE developments. Heath Lane will be expanded to take on pupils from these SUE developments when needed. 90% attend from within catchment.

4053 – Redmoor Academy - Feeder cohort numbers above average and consistent. Moderate level of additional housing development expected. High levels of in catchment attendance. Only 4% attend from outside of catchment. Additional facilities almost completed ready for August 2025.

4040 – The Hinckley School – Currently has significant surplus capacity. Has reduced PAN to manage this, PAN will be increased again when any housing gain comes forwards. 74% comes from within the catchment area.

4602 – Saint Martin’s Catholic Voluntary Academy - Consistent, average sized feeder cohort sizes. Some new housing in the immediate area. Consistently takes numbers well above PAN (current capacity 580, 749).

Future Actions

4026 – Hastings High School – Expansion taking place to increase the NC from 800 to 1000 (PAN to 200) from August 2025.

4053 – Redmoor Academy – Expansion taking place to increase the NC from 925 to 1120 (PAN to 224) from August 2025.

4602 - Saint Martin’s Catholic Voluntary Academy – Keep a watching brief, school are keen to expand if the need arises.

4011 – Heath Lane Academy – Keep a watching brief, school are keen to expand if the need arises due to housing gain in the Earl Shilton area (SUE).

4040 – The Hinckley School – Temporarily reduced PAN to 180 (150 for Sixth Form) due to low numbers. Have physical capacity to increase again when the need arises.

Overall, there is capacity within the planning area to cope with projected pupil forecasts and housing growth.

Planning Area Data – Market Bosworth Secondary

Planning area name:

Market Bosworth Secondary

Number:

855 1200

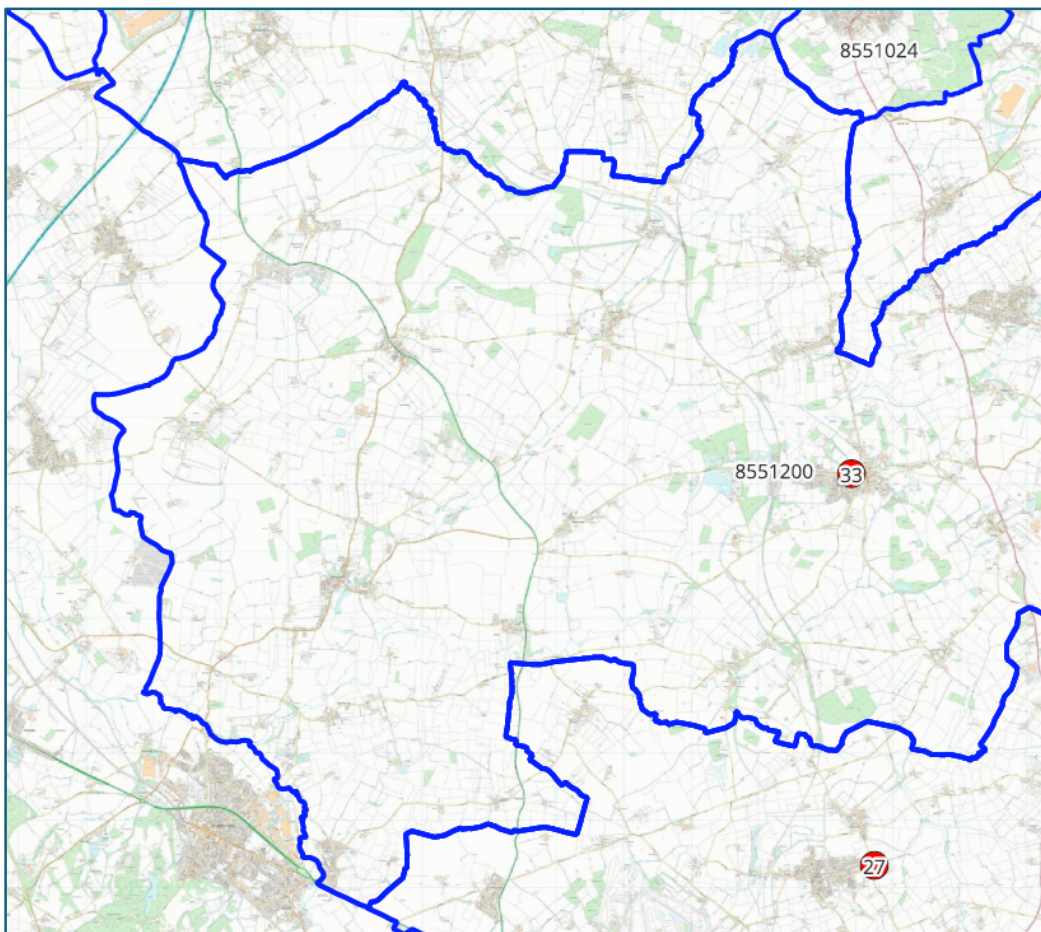
District Area:

Hinckley & Bosworth Borough Council

Schools:

1

There is 1 secondary school in the Market Bosworth Secondary planning area.

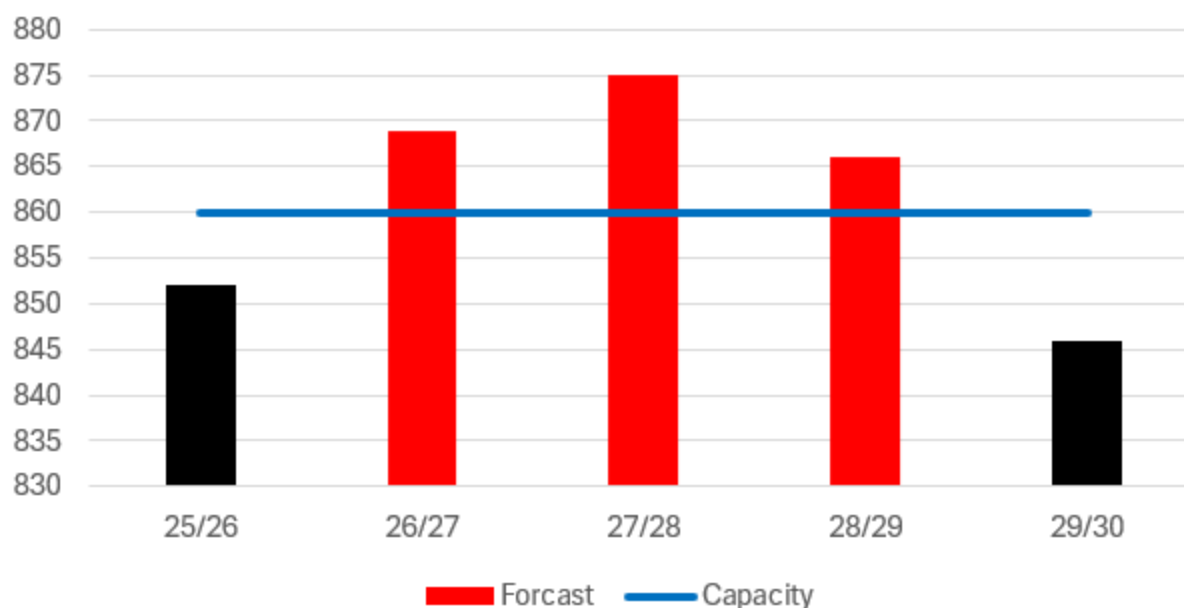


A map showing the Market Bosworth Secondary planning area. There is 1 school. The table below provides the map reference numbers alongside relevant school names.

Table 37 showing map number and school name

School Name	DfE Number	Status
33 - The Market Bosworth School	855 4016	Academy Convertor

8551200 Market Bosworth Secondary



A chart showing forecast pupil numbers for 2025-2030 against a fixed capacity line. Capacity remains at 860 each year. Full data is provided in the table below.

Table 38 provides a full breakdown of the data presented in the chart above, including totals and school-level breakdowns.

Forecast Data	AN	Cap	25/26	26/27	27/28	28/29	29/30
The Market Bosworth School	172	860	852	869	875	866	846
Total:	172	860	852	869	875	866	846

Current Overview

4016 – The Market Bosworth School - Moderate level of housing development in the catchment area. Approximately 32% of NOR from out of catchment, 6.7% of NOR from out of County (mainly Warwickshire).

Future Actions

4016 – The Market Bosworth School – keep on watching brief. Although the forecast shows a possibility of a small number of deficit places, the school likely has the physical capacity to be able to manage these with either a bulge year or catchment pushback, particularly to out of county.

Planning Area Data – Markfield Secondary

Planning area name:

Markfield Secondary

Number:

855 1260

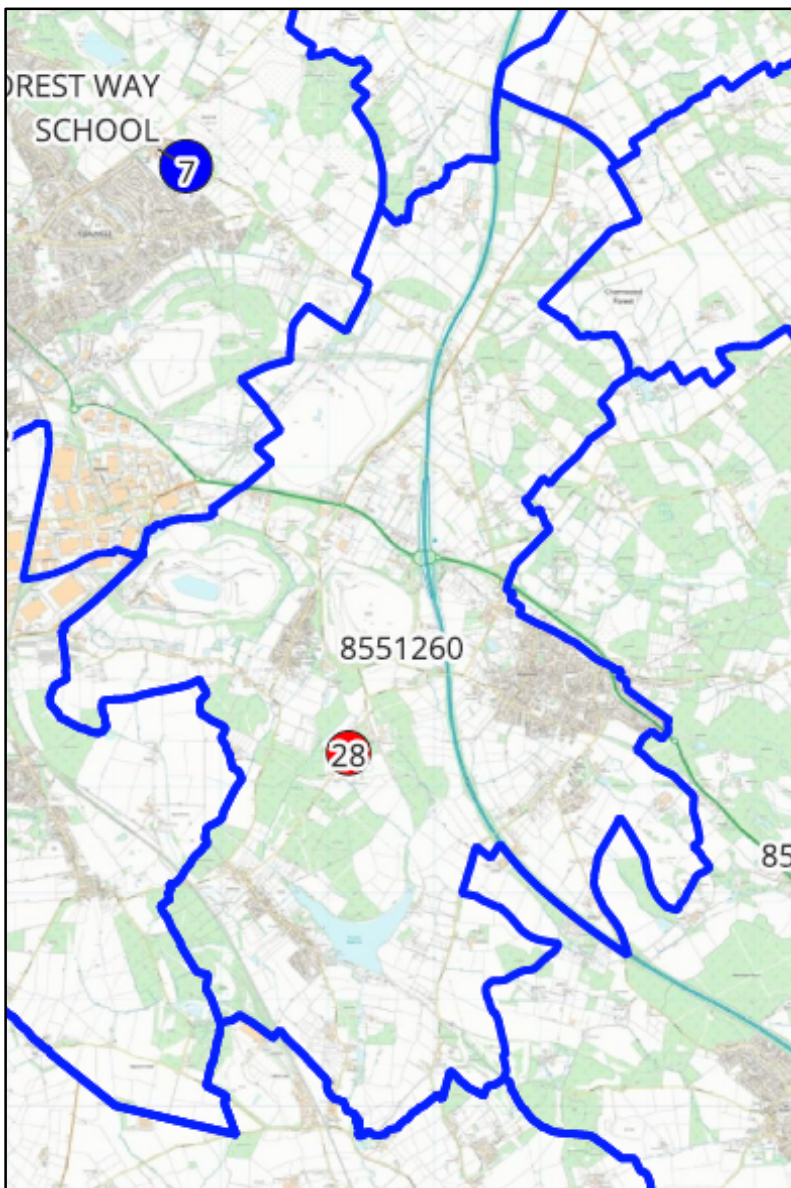
District Area:

Hinckley & Bosworth Borough Council

Schools:

1

There is 1 secondary school in the Markfield Secondary planning area.

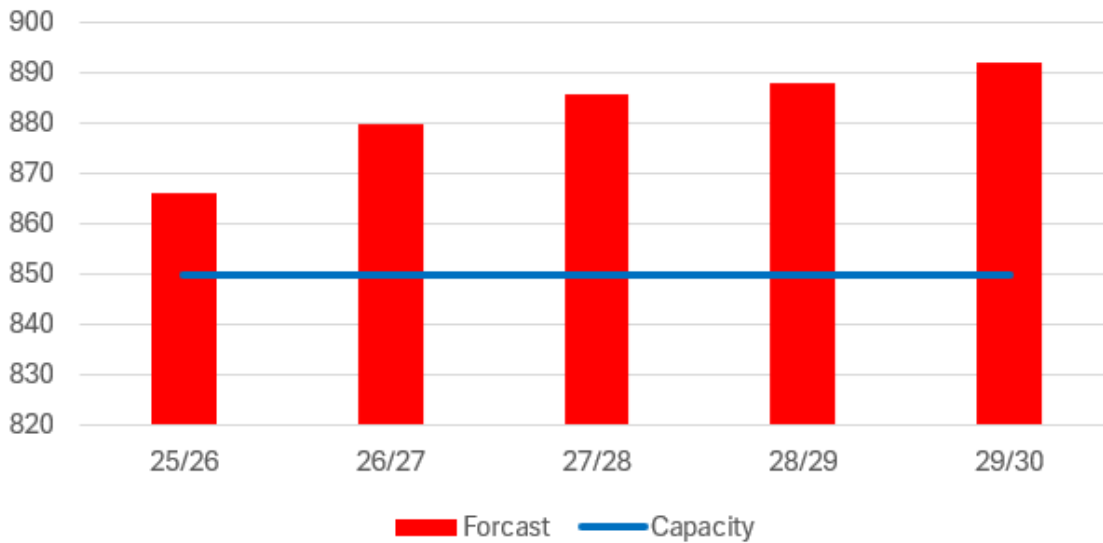


A map showing the Markfield Secondary planning area. There is 1 school. The table below provides the map reference numbers alongside relevant school names.

Table 39 showing map number and school name

School Name	DfE Number	Status
28 - South Charnwood High School	855 4018	Academy Convertor

8551260 Markfield Secondary



A chart showing forecast pupil numbers for 2025-2030 against a fixed capacity line. Capacity remains at 850 each year. Full data is provided in the table below.

Table 40 provides a full breakdown of the data presented in the chart above, including totals and school-level breakdowns.

Forecast Data	AN	Cap	25/26	26/27	27/28	28/29	29/30
South Charnwood High School	170	850	866	880	886	888	892
Total:	170	850	866	880	886	888	892

Current Overview

4018 – South Charnwood High School. Mostly below average primary feeder cohort numbers. Moderate level of new housing expected within the catchment area with detailed consent. 55% NOR from out of catchment large numbers from 4051 – Brookvale Groby Learning Campus. 85% catchment retention.

Future Actions

4018 – South Charnwood High School. Keep on watching brief. Catchment pushback if required. Although the forecast suggests a small deficit of places in some years (up to 2.2%) this can be managed.

Planning Area Data – Melton Secondary

Planning area name:

Melton Secondary

Number:

855 1070

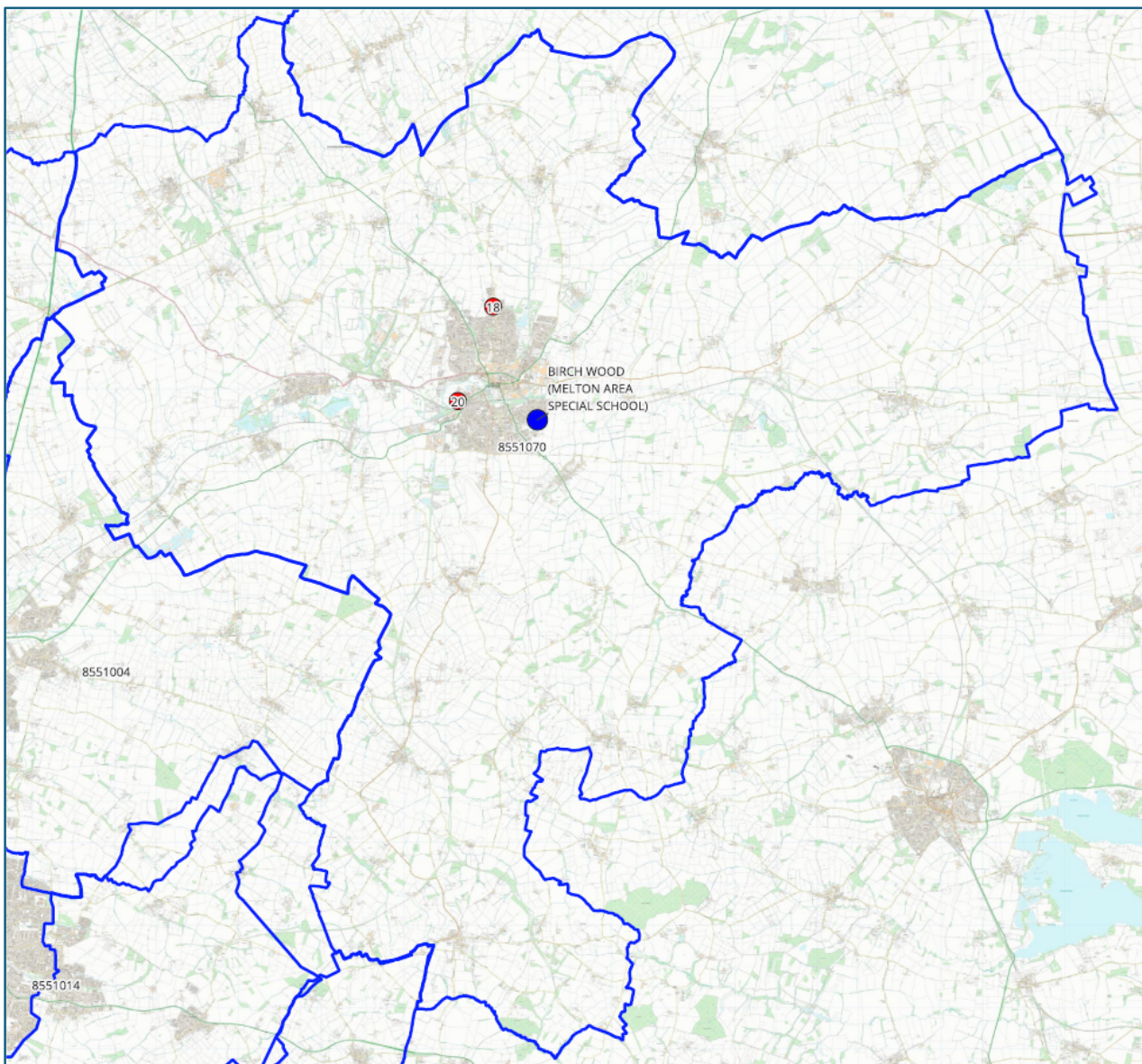
District Area:

Melton

Schools:

2

There are 2 secondary schools in the Melton Secondary planning area. Both are academies.

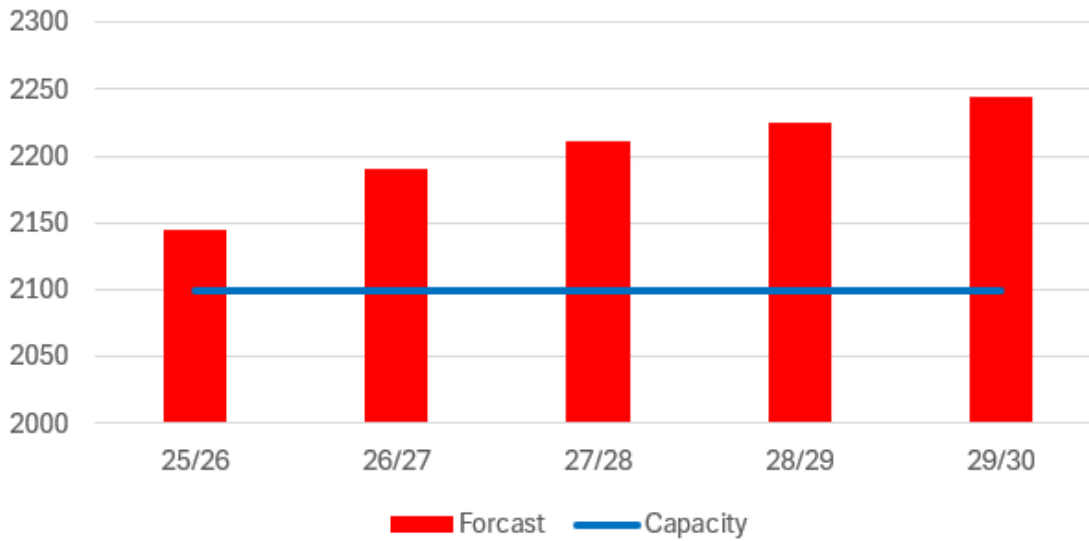


A map showing the Melton Secondary planning area. There are 2 schools. The table below provides the map reference numbers alongside relevant school names.

Table 41 showing map number and school name

School Name	DfE Number	Status
18 - John Ferneley College	855 4044	Academy Convertor
20 - Longfield Spencer Academy	855 5400	Academy Convertor

8551070 Melton Secondary



A chart showing forecast pupil numbers for 2025-2030 against a fixed capacity line. Capacity remains at 2,100 each year. Full data is provided in the table below.

Table 42 provides a full breakdown of the data presented in the chart above, including totals and school-level breakdowns.

Forecast Data	AN	Cap	25/26	26/27	27/28	28/29	29/30
John Ferneley College	240	1200	1194	1210	1231	1221	1222
Longfield Spencer Academy	180	900	951	980	981	1004	1023
Total:	420	2100	2145	2190	2212	2225	2245

Current Overview

There are 2 secondary schools in Melton Town which operate a joint catchment area across the town. There is high in catchment attendance and numbers of out of catchment pupils reducing in each yearly intake.

John Ferneley College – 1200 places and Long Field Spencer Academy – 900 places = 2100 places. The forecast is increasing to a maximum of 2225 in 27/28.

There is large scale development planned in Melton town as part of the Melton North and Melton South masterplan. It is possible that there may be a need for further secondary expansion once final housing numbers are known.

Future Actions

John Ferneley College was expanded to 1200 places from 23/24. We are now expanding Long Field Spencer Academy by 300 places from 26/27.

Planning Area Data – Belvoir Secondary

Planning area name:

Belvoir Secondary

Number:

855 1075

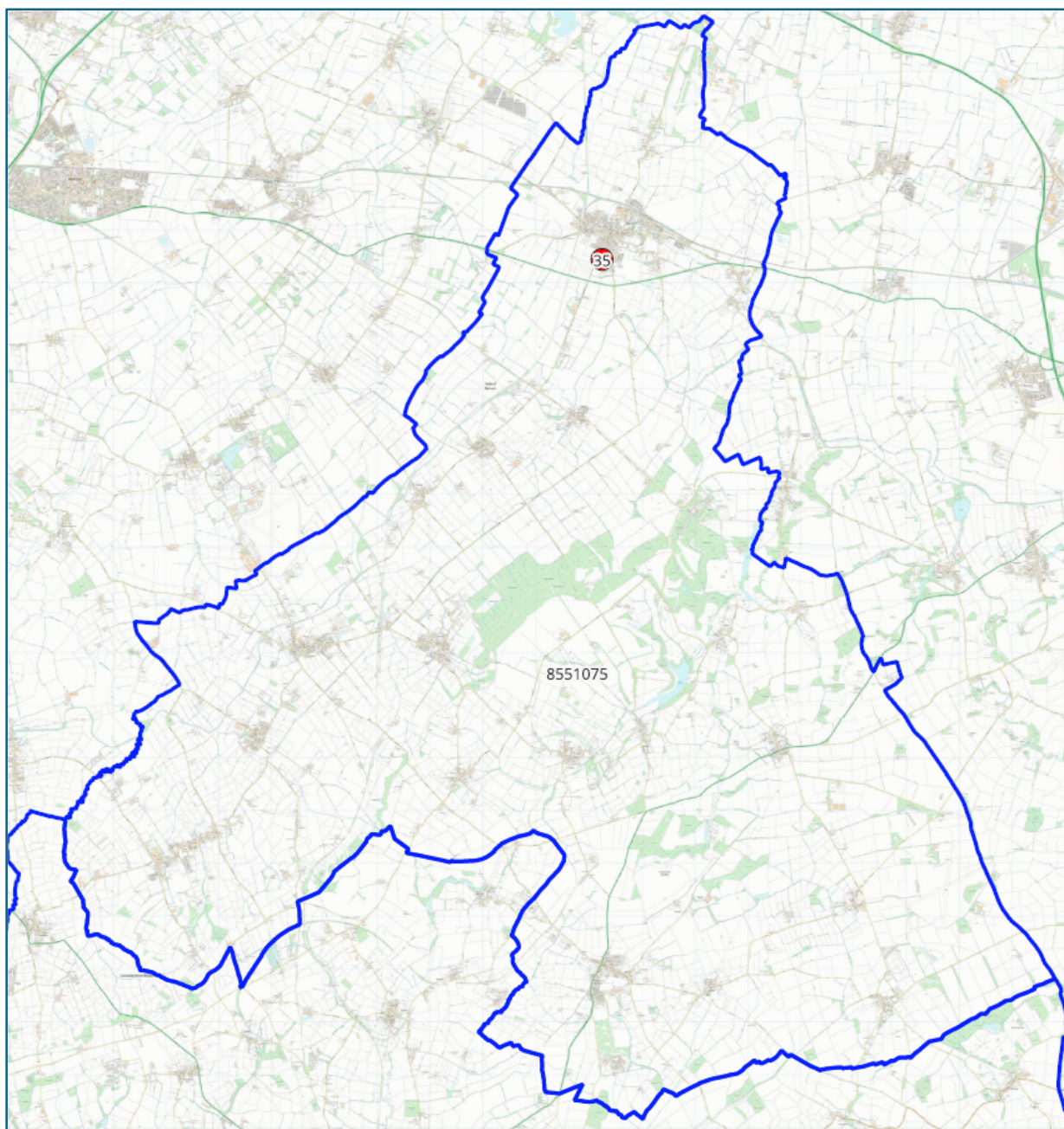
District Area:

Melton

Schools:

1

There is 1 secondary school in the Belvoir planning area. The Priory Belvoir Academy.

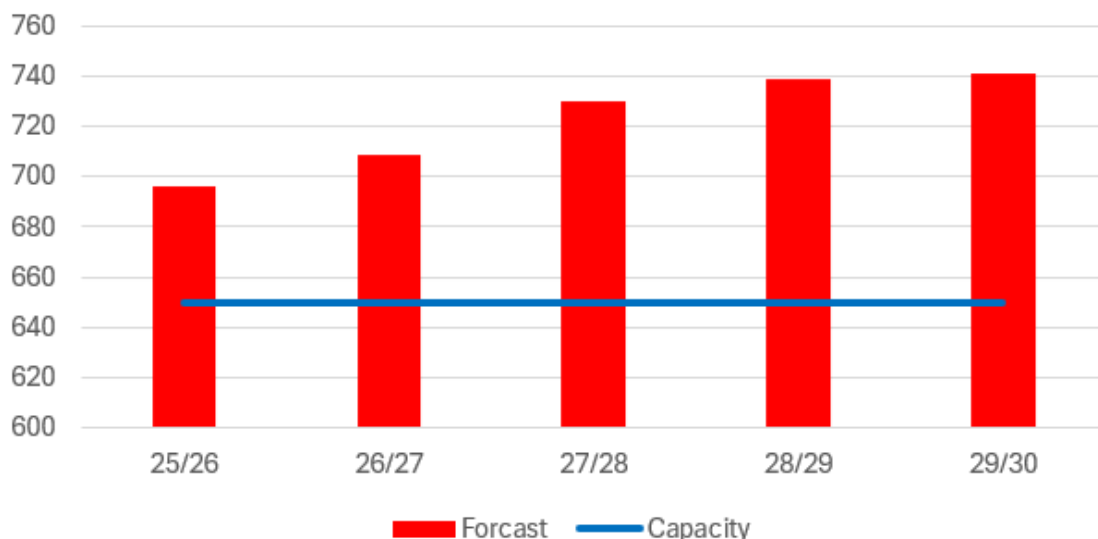


A map showing the Belvoir planning area. There is 1 school. The table below provides the map reference numbers alongside relevant school names.

Table 43 showing map number and school name

School Name	DfE Number	Status
35 - The Priory Belvoir Academy	855 4036	Academy Convertor

8551075 Belvoir Secondary



A chart showing forecast pupil numbers for 2025-2030 against a fixed capacity line. Capacity remains at 650 each year. Full data is provided in the table below.

Table 44 provides a full breakdown of the data presented in the chart above, including totals and school-level breakdowns.

Forecast Data	AN	Cap	25/26	26/27	27/28	28/29	29/30
35 - The Priory Belvoir Academy	130	650	696	709	730	739	741
Total:	130	650	696	709	730	739	741

Current Overview

The Priory Belvoir Academy – Capacity 650 but school admit up to 140 per year group totalling 700 capacity.

The academy also has many out of catchment and out of county pupils.

Children in the catchment area of the academy can be accommodated.

Future Actions

There is housing development in the area, and we are keeping a watching brief on the school. S106 has been received, and the use of this funding has been discussed with the academy to enhance provision.

Planning Area Data – Castle Donnington Secondary

Planning area name:

Castle Donnington Secondary

Number:

855 1008

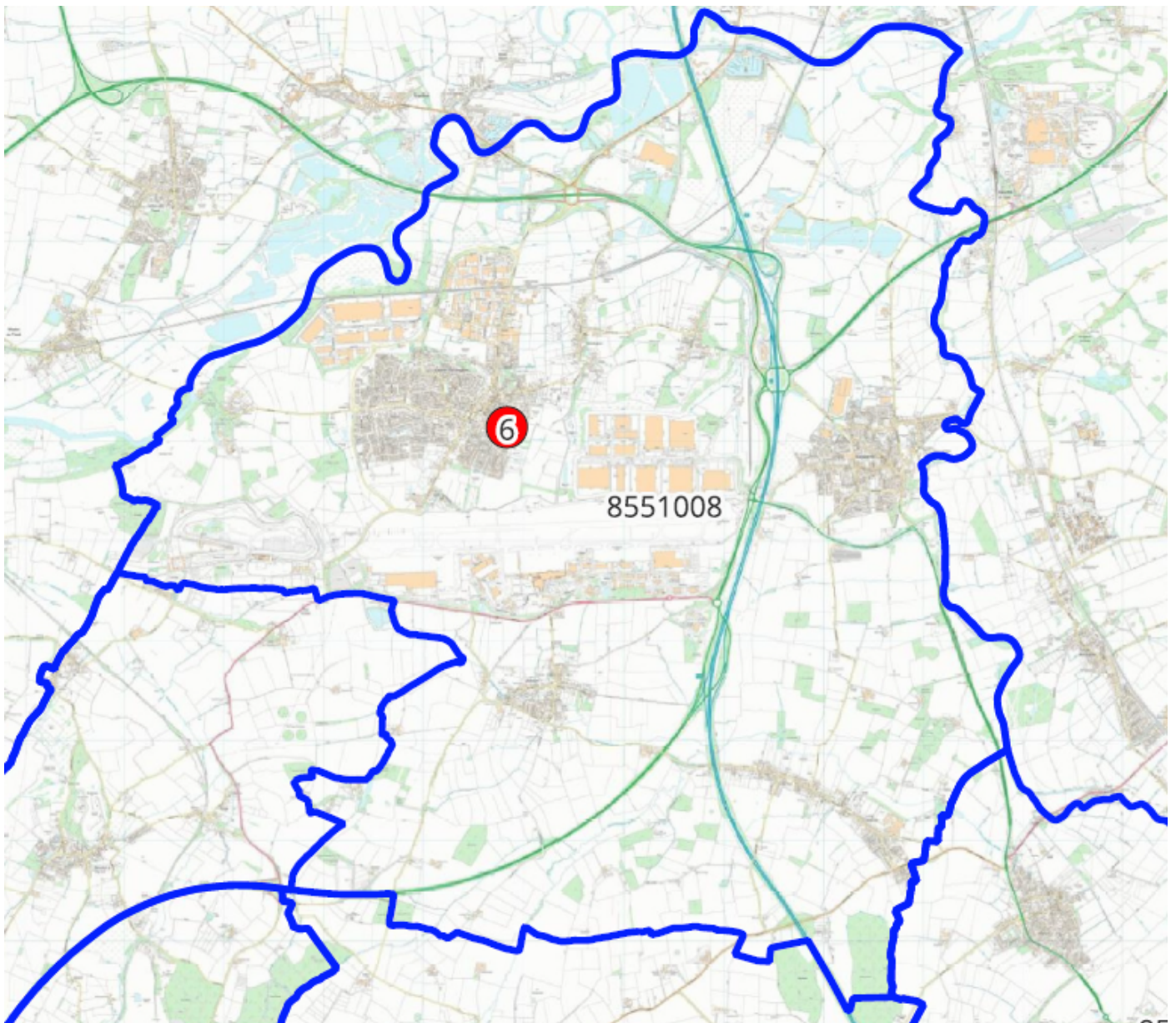
District Area:

North West Leicestershire District Council

Schools:

1

There is 1 Secondary school in the Castle Donnington Secondary planning area and it is an Academy school.

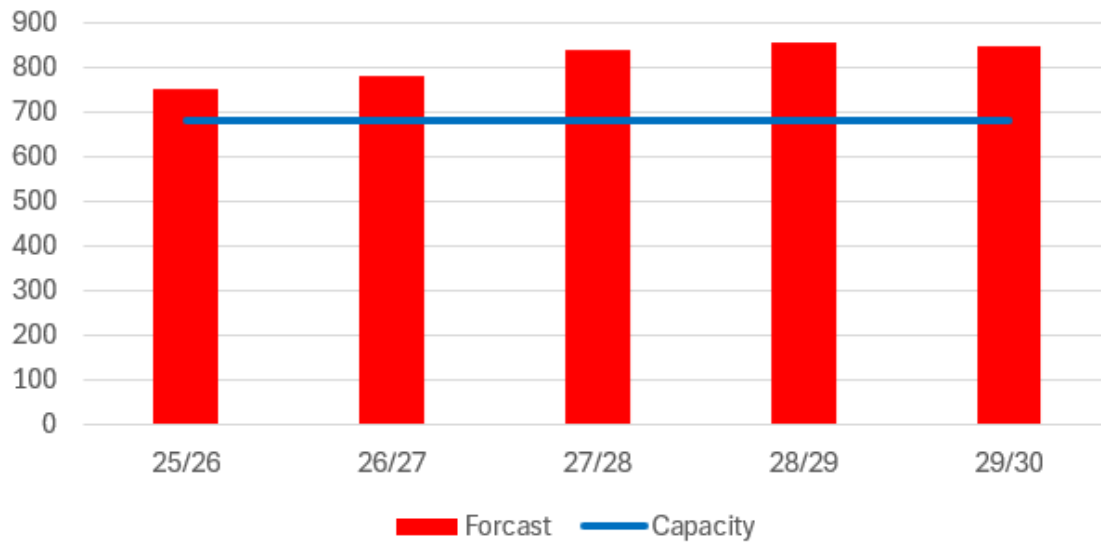


A map showing the Castle Donnington Secondary planning area. There is 1 school. The table below provides the map reference numbers alongside relevant school names.

Table 45 showing map number and school name

School Name	DfE Number	Status
Castle Donnington College	855 4012	Academy school

8554031 Castle Donnington Secondary



A chart showing forecast pupil numbers for 2025-2030 against a fixed capacity line. Capacity remains at 645 each year. Full data is provided in the table below.

Table 46 provides a full breakdown of the data presented in the chart above, including totals and school-level breakdowns.

Forecast Data	AN	Cap	25/26	26/27	27/28	28/29	29/30
Castle Donnington College	150	645	696	702	737	745	736
Total:	150	645	696	702	737	745	736

Current Overview

4031 – Castle Donnington College – Forecasts show a deficit of places imminently. High amounts of housing gain. Emerging local plan review also proposes a further allocation of over 1,000 homes at Castle Donnington. High catchment gains from Derbyshire.

Future Actions

When comparing the net capacity and forecast pupils, the projections show a deficit of places of 109 when reaching 2031/32. In discussions with the Trust regarding expansion works. S106 money is limited. May have to push back pupils to other areas such as Derbyshire.

Planning Area Data – Coalville Secondary

Planning area name:

Coalville Secondary

Number:

855 1022

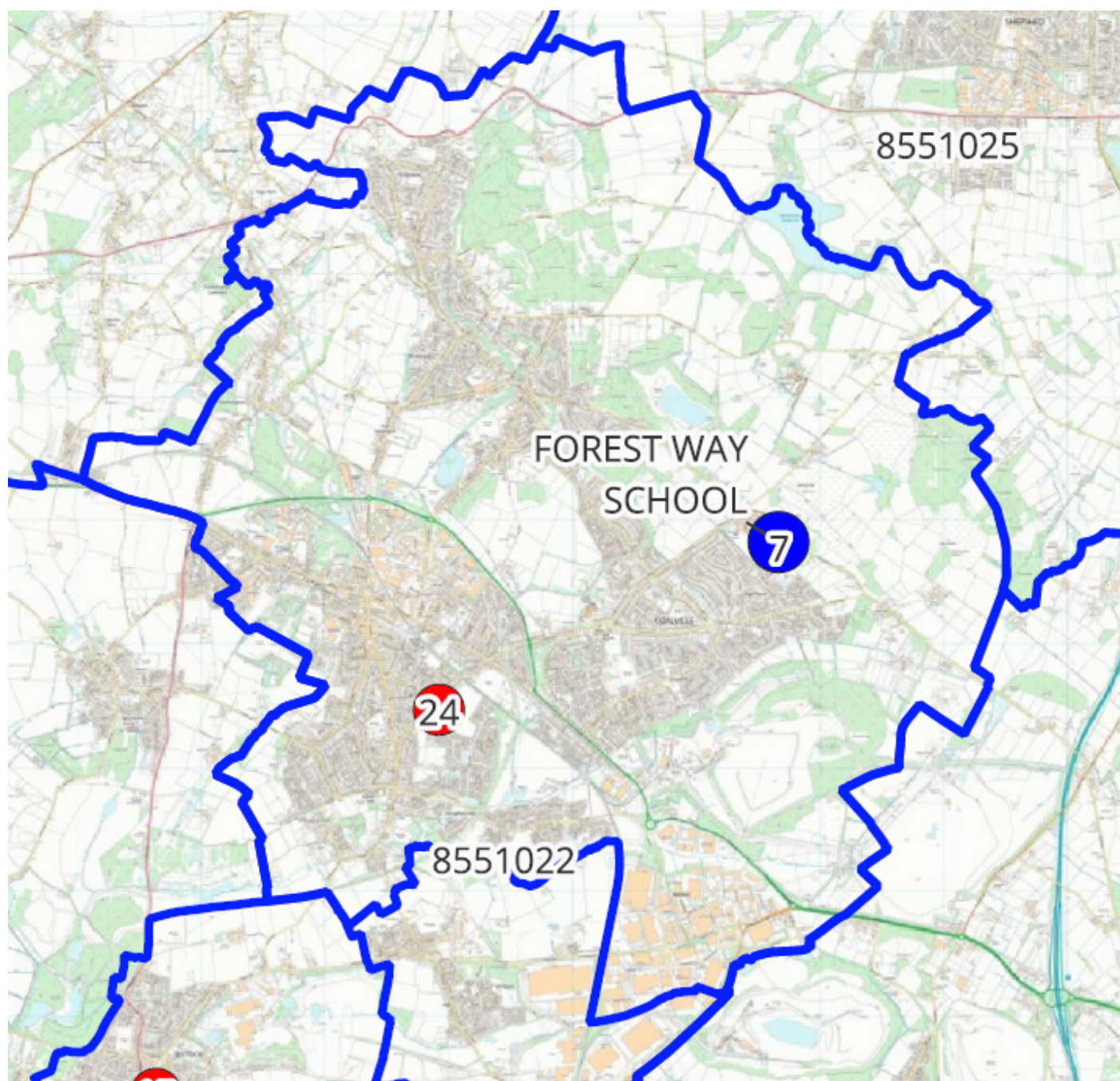
District Area:

North West Leicestershire District Council

Schools:

2

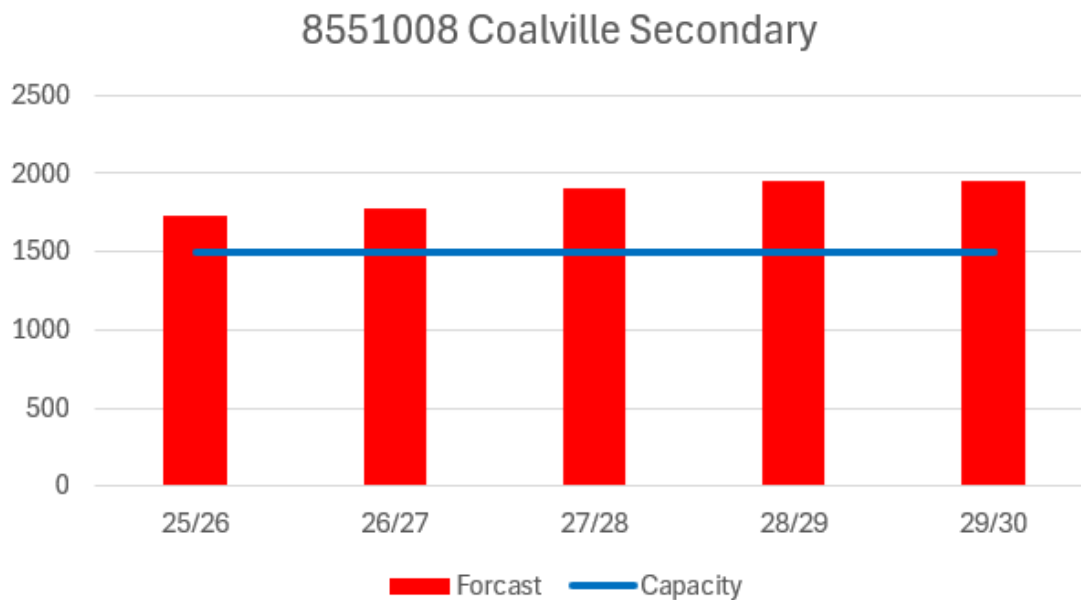
There are 2 Secondary school in the Coalville Secondary planning area, and they are both Academy schools.



A map showing the Coalville Secondary planning area. There are 2 schools. The table below provides the map reference numbers alongside relevant school names.

Table 47 showing map number and school name

School Name	DfE Number	Status
The Castle Rock School	855 4035	Academy school
The Newbridge School	855 4007	Academy school



A chart showing forecast pupil numbers for 2025-2030 against a fixed capacity line. Capacity remains at 2,400 each year. Full data is provided in the table below.

Table 48 provides a full breakdown of the data presented in the chart above, including totals and school-level breakdowns.

Forecast Data	AN	Cap	25/26	26/27	27/28	28/29	29/30
The Castle Rock School	250	1500	1083	1076	1056	1066	1070
The Newbridge School	180	900	851	1019	1021	1076	1121
Total:	430	2400	1934	2095	2077	2142	2191

Current Overview

4035 – The Castle Rock School – Large housing growth in catchment (largely land off Grange Road, Hugglescote). Other major housing developments have obtained planning permission (Coalville area). Draft Local Plan allocations also include further housing growth in catchment. Forecasts show the school has large amounts of surplus capacity.

4007- The Newbridge School – Forecasts exceed school capacity by 26/27 academic year. Large housing growth in catchment.

Future Actions

4035 – The Castle Rock School – No action currently required.

4007- The Newbridge School – The Trust are currently proposing plans for a new dining room space and classroom block. We are in active discussions with the Trust to support them with expansion using S106 funds.

Overall, when looking at the planning area, taking account of the two secondary schools, the combined net capacity and the highest pupil forecast year (2029/30), there is a surplus of 209 places. The surplus places at The Castle Rock offset the deficit of places at The Newbridge School. The schools are within 2 miles of each other. This has been discussed with the Trust who run both secondary schools.

Planning Area Data – Ashby Secondary

Planning area name:

Ashby Secondary

Number:

855 1023

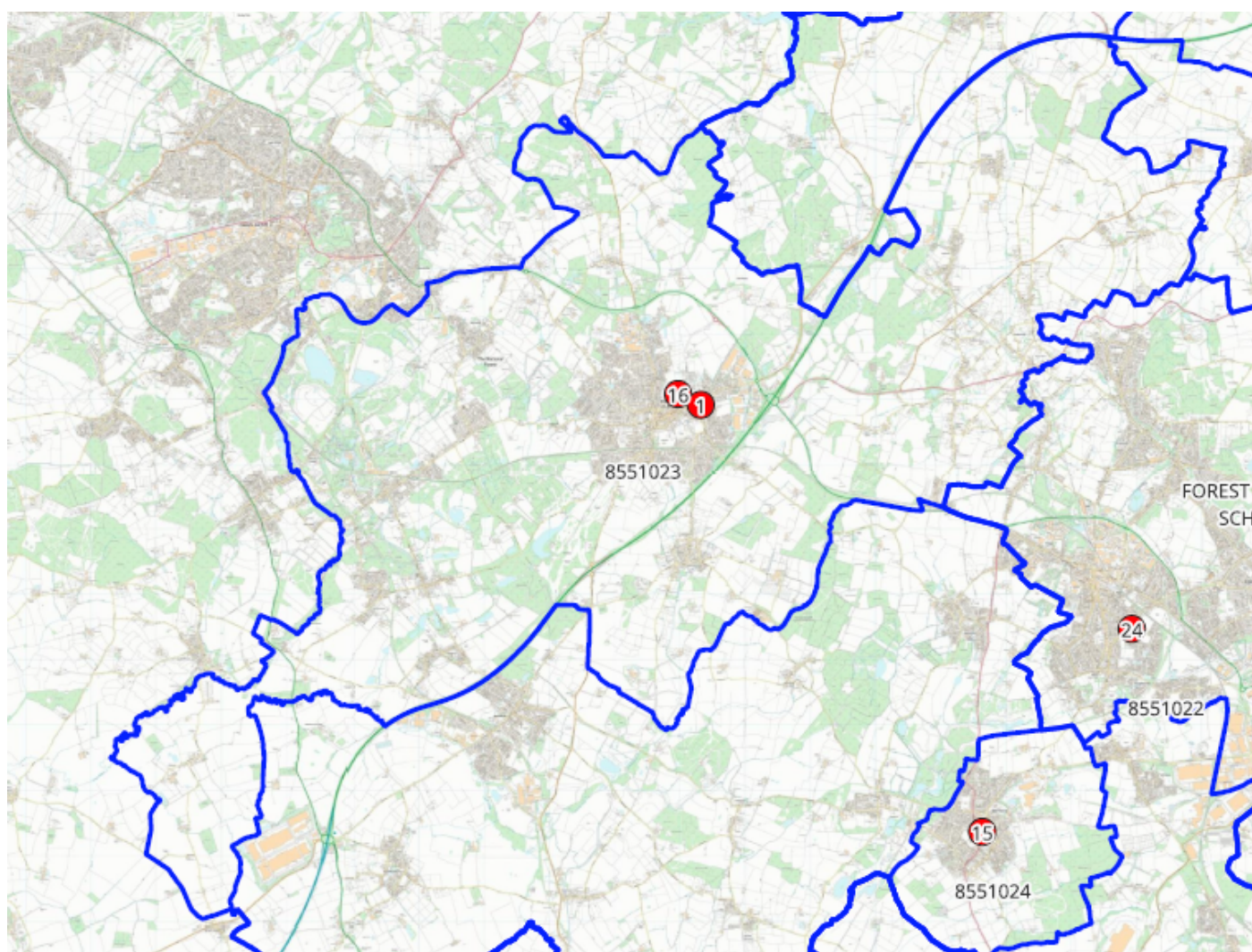
District Area:

North West Leicestershire District Council

Schools:

2

There are 2 Secondary school in the Ashby Secondary planning area, and they are both Academy schools.

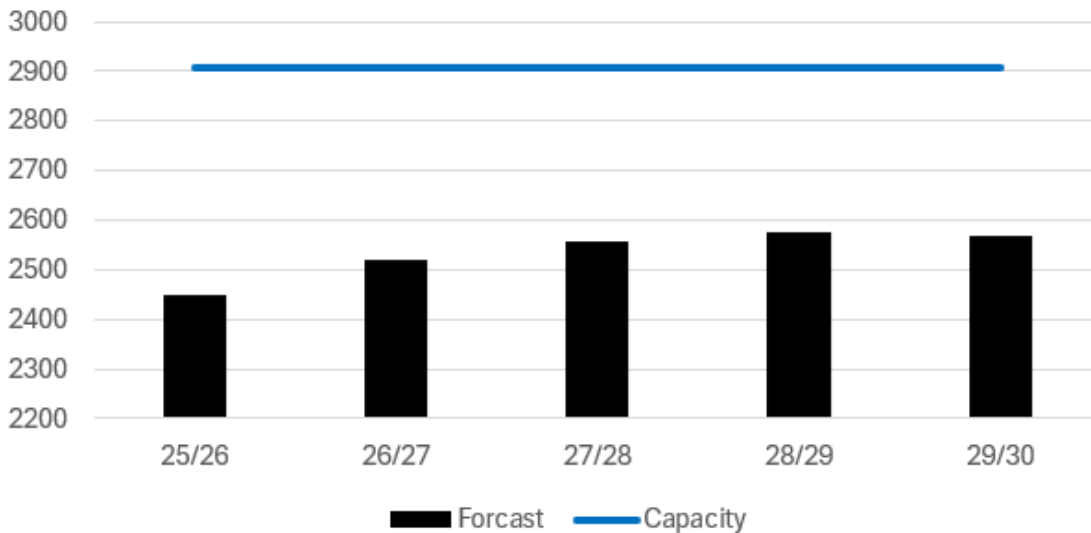


A map showing the Ashby Secondary planning area. There are 2 schools. The table below provides the map reference numbers alongside relevant school names.

Table 49 showing map number and school name

School Name	DfE Number	Status
Ivanhoe School	855 4028	Academy school
Ashby School	855 4042	Academy school

8551023 Ashby Secondary



A chart showing forecast pupil numbers for 2025-2030 against a fixed capacity line. Capacity remains at 2,759 each year. Full data is provided in the table below.

Table 50 provides a full breakdown of the data presented in the chart above, including totals and school-level breakdowns.

Forecast Data	AN	Cap	25/26	26/27	27/28	28/29	29/30
Ashby School	222	1810	1668	1646	1677	1686	1702
Ivanhoe School	195	949	869	933	936	921	917
Total:	417	2759	2537	2579	2613	2607	2619

Current Overview

Ashby School – school has capacity for the forecast pupils. There is housing growth in the catchment. Further development at the Money Hill site is a proposed allocation in the North West Leicestershire local plan.

4028 – Ivanhoe School – School has capacity for forecast pupils.

Future Actions

When looking at the overall requirements of the planning area, there are 140 surplus places when comparing the net capacity of the two schools and the highest forecast number in 29/30.

Therefore, no action is currently required.

When looking at the overall requirements of the planning area, there are 140 surplus places when comparing the net capacity of the two schools and the highest forecast number in 29/30.

Therefore, no action is currently required.

Planning Area Data – Ibstock Secondary

Planning area name:

Ibstock Secondary

Number:

855 1024

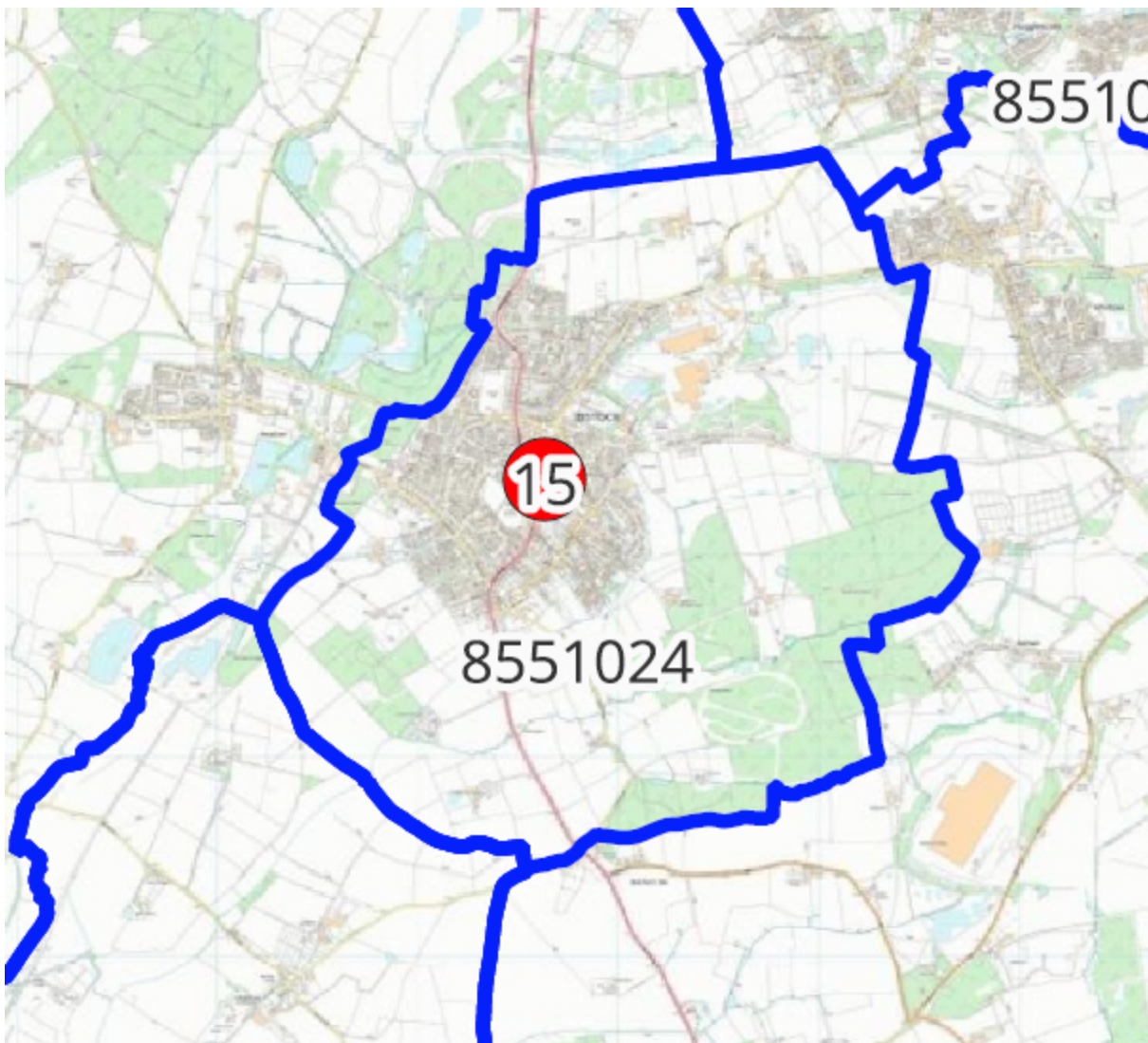
District Area:

North West Leicestershire District Council

Schools:

1

There is 1 Secondary school in the Ibstock Secondary planning area and it is an Academy school.

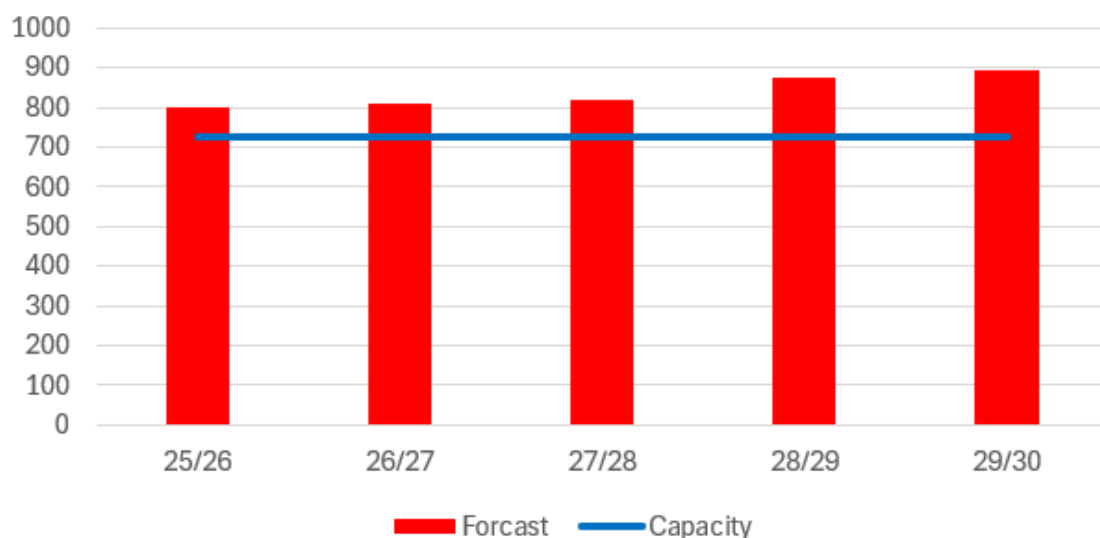


A map showing the Ibstock Secondary planning area. There is 1 school. The table below provides the map reference numbers alongside relevant school names.

Table 51 showing map number and school name

School Name	DfE Number	Status
Ibstock Community College	855 4012	Academy school

8551024 Ibstock Secondary



A chart showing forecast pupil numbers for 2025-2030 against a fixed capacity line. Capacity remains at 725 each year. Full data is provided in the table below.

Table 52 provides a full breakdown of the data presented in the chart above, including totals and school-level breakdowns.

Forecast Data	AN	Cap	25/26	26/27	27/28	28/29	29/30
Ibstock Community College	145	725	707	732	763	791	824
Total:	145	725	707	732	763	791	824

Current Overview

4012 – Ibstock Community College – forecasts show that there will be a deficit of places in coming years. Major housing growth in catchment includes land off Grange Road at Hugglescote. North West Leicestershire draft local plan allocation identifies a site at land of Leicester Road, Ibstock.

Future Actions

4012 – Ibstock Community College – Currently working with Ibstock Community College to expand. Planning application is with North West Leicestershire District planning department for expansion – including two storey classroom block to meet demands for additional capacity. Work will commence as soon as planning is granted.