

THE LEICESTERSHIRE COUNTY COUNCIL  
(VARIOUS ROADS, IN THE PARISHES OF AB KETTLEBY, BURTON AND  
DALBY, FREEBY, SCALFORD AND WALTHAM ON THE WOLDS AND  
THORPE ARNOLD, IN THE BOROUGH OF MELTON) (IMPOSITION OF  
30MPH, RESTRICTED ROAD, 40MPH AND 50MPH SPEED LIMIT)  
ORDER 2026

The Leicestershire County Council ("the Council") in exercise of its powers under Sections 5, 81, 82(2), 83(2), 84, and Part IV of Schedule 9 of the Road Traffic Regulation Act 1984 ("the Act") and of all other enabling powers, after consultation with the Chief Officer of Police in accordance with Part III of Schedule 9 to the Act, hereby makes the following Order:-

This Order may be cited as "The Leicestershire County Council, (Various Roads in the Parishes of Ab Kettleby, Burton and Dalby, Freeby, Scalford and Walton on the Wolds and Thorpe Arnold, in the Borough of Melton) (Imposition of 30 mph, Restricted Road, 40mph and 50mph Speed Limit) Order 2026"

1. The Order shall come into force on the eleventh day of May 2026
2. The Orders specified in Schedule 1 are hereby revoked in full
3. The Orders specified in Schedule 2 are hereby revoked in part
4. No person shall drive any motor vehicle at a speed exceeding 30 MPH on the length of road specified in Schedule 3 to this Order
5. The length of road as specified in Schedule 4 to this Order shall become a restricted road for the purpose of Section 81 of the Act.

6. No person shall drive any motor vehicle at a speed exceeding 40 MPH on the lengths of road specified in Schedule 5 to this Order
  
7. No person shall drive any motor vehicle at a speed exceeding 50 MPH on the lengths of road specified in Schedule 6 to this Order
  
8. The plans annexed to this Order and marked drawing numbers  
TM5164/T1/1/1SPEED, TM5164/T1/1/2SPEED, TM5164/T1/1/3SPEED,  
TM5164/T1/1/4SPEED and TM5164/T1/1/5SPEED are for identification  
purposes only

## **SCHEDULE 1**

### **REVOCATION IN FULL**

1. THE LEICESTERSHIRE COUNTY COUNCIL  
(A606 NOTTINGHAM ROAD, MELTON MOWBRAY TO POTTER HILL)  
(IMPOSITION OF 50 MPH, SPEED LIMIT) ORDER 2006
  
2. THE LEICESTERSHIRE COUNTY COUNCIL  
(MELTON ROAD, SCALFORD AND SCALFORD ROAD, MELTON MOWBRAY IN  
THE BOROUGH OF MELTON) (IMPOSITION OF 40 AND 50MPH SPEED LIMIT)  
ORDER 2019
  
3. THE LEICESTERSHIRE COUNTY COUNCIL  
(THORPE ROAD, MELTON MOWBRAY AND WALTHAM ROAD, WALTHAM  
ON THE WOLDS BOROUGH OF MELTON)  
(IMPOSITION OF A RESTRICTED ROAD AND 40 MPH SPEED LIMIT) ORDER  
2019
  
4. ROAD TRAFFIC REGULATION ACT 1967  
THE LEICESTERSHIRE COUNTY COUNCIL  
(BURTON ROAD AND MELTON ROAD, (ROUTE A606) PARISHES OF MELTON  
MOWBRAY AND BURTON LAZARS)  
(RESTRICTED ROAD AND 50 M.P.H SPEED LIMIT) ORDER 1983

## **SCHEDULE 2**

### **REVOCATION IN PART**

5. THE LEICESTERSHIRE COUNTY COUNCIL  
(ST. BARTHOLOMEW'S WAY, MELTON MOWBRAY.  
IN THE BOROUGH OF MELTON)  
(IMPOSITION OF 40 MPH & 50 MPH SPEED LIMIT) ORDER 2019

#### **SCHEDULE 2**

**IMPOSITION OF 40 MPH SPEED LIMIT**

St Bartholomew's Way, Melton

From its junction with Nottingham Road (A606) to a point 256 metres west of its  
junction with Nottingham Road (A606)

6. THE LEICESTERSHIRE COUNTY COUNCIL  
(NOTTINGHAM ROAD, MELTON MOWBRAY, BOROUGH OF MELTON)  
(IMPOSITION OF RESTRICTED) ROAD ORDER 2023

#### **SCHEDULE 3**

**IMPOSITION OF 40MPH SPEED LIMIT**

Nottingham Road, Melton Mowbray

From a point 80 metres northwest of its junction with Shakespeare Gardens to a  
point 80 metres northwest of its junction with St Bartholomew's Way

7. THE LEICESTERSHIRE COUNTY COUNCIL  
(B676 MELTON MOWBRAY TO BUCKMINSTER, IN THE PARISHES OF FREEBY,  
GARTHORPE AND BUCKMINSTER)  
(REVOCATION OF 30MPH SPEED LIMIT AND IMPOSITION OF 30MPH 40MPH  
AND 50MPH SPEED LIMITS) ORDER No 2 2017

SCHEDULE 5

50 M.P.H

Route B676

Saxby Road, Melton Mowbray & Saxby Road, Brentingby (Parish of Freeby) & Saxby  
Road, Wyfordby (Parish of Freeby) & Saxby Road, Freeby (Parish of Freeby) &  
Saxby Road, Saxby (Parish of Freeby)

From a point 887 metres east of its junction with Bishop Street, Melton Mowbray to a  
point 218 metres west of its junction with Church Lane, Saxby

8. THE LEICESTERSHIRE COUNTY COUNCIL  
(A606 MELTON ROAD IN THE PARISH OF BURTON AND DALBY AND OAKHAM  
ROAD, SOMERBY IN THE PARISH OF SOMERBY, IN THE BOROUGH OF  
MELTON) (IMPOSITION OF 50MPH SPEED LIMIT) ORDER 2020

SCHEDULE 2

Imposition of 40 MPH Speed Limit

Burton Road (A606), Melton Mowbray

From a point 48 metres south east from its junction with Essex Close, Melton  
Mowbray to a point 188 metres south east of its junction with Lime Street, Burton  
Lazars

**SCHEDULE 3**

**IMPOSITION OF 30 MPH SPEED LIMIT**

MELTON SPINNEY ROAD, MELTON MOWBRAY

From a point 38 metres north of its junction with Heron Crescent to a point 92 metres  
north of its junction with Heron Crescent.

**SCHEDULE 4**

**IMPOSITION OF RESTRICTED ROAD (30MPH BY VIRTUE OF  
STREETLIGHTING)**

BURTON ROAD, MELTON MOWBRAY

From a point 50 metres southeast of its junction with Essex Close to a point 119  
metres northwest of its junction with Essex Close.

**SCHEDULE 5**

**IMPOSITION OF 40 MPH SPEED LIMIT**

ROUNABOUT AT JUNCTION OF A606 NOTTINGHAM ROAD, A606 NEMMDR,  
NOTTINGHAM ROAD AND ST BARTHOLOMEW'S WAY, MELTON MOWBRAY

For the entire circulatory carriageway.

ST BARTHOLOMEW'S WAY, MELTON MOWBRAY

From its junction with A606 NEMMDR roundabout to a point 107metres west of its junction with Boyd Road.

A606 NOTTINGHAM ROAD, MELTON MOWBRAY

From its junction with A606 NEMMDR roundabout to a point 145 metres northwest of its junction with A606 NEMMDR roundabout.

NOTTINGHAM ROAD, MELTON MOWBRAY

From its junction with A606 NEMMDR roundabout to a point 80 metres northwest of its junction with Shakespeare Gardens.

A606 NEMMDR, MELTON MOWBRAY

From its junction with A606 Nottingham Road roundabout to its junction with Scalford Road roundabout.

ROUNDBOUT AT JUNCTION OF A606 NEMMDR AND SCALFORD ROAD,  
MELTON MOWBRAY

For the entire circulatory carriageway.

SCALFORD ROAD, MELTON MOWBRAY

From its junction with A606 NEMMDR roundabout to a point 133 metres north of its junction with A606 NEMMDR roundabout.

SCALFORD ROAD, MELTON MOWBRAY

From its junction with A606 NEMMDR roundabout to its junction with Leighton Road roundabout.

ROUNDBOUT AT JUNCTION OF SCALFORD ROAD AND LEIGHTON ROAD,  
MELTON MOWBRAY

For the entire circulatory carriageway.

SCALFORD ROAD, MELTON MOWBRAY

From its junction with Leighton Road roundabout to a point 148 metres north of its junction with Brockington Road.

A606 NEMMDR, MELTON MOWBRAY

From its junction with Scalford Road roundabout to its junction with Melton Spinney Road roundabout.

ROUNDBOUT AT JUNCTION OF A606 NEMMDR AND MELTON SPINNEY  
ROAD, MELTON MOWBRAY

For the entire circulatory carriageway.

MELTON SPINNEY ROAD, MELTON MOWBRAY

From its junction with A606 NEMMDR roundabout to a point 277 metres north of its junction with A606 NEMMDR roundabout.

MELTON SPINNEY ROAD, MELTON MOWBRAY

From its junction with A606 NEMMDR roundabout to a point 92 metres north of its junction with Heron Crescent.

A606 NEMMDR, MELTON MOWBRAY

From Melton Spinney Road roundabout junction to a point 50 metres southeast of Melton Spinney Road roundabout junction.

ROUNDAABOUT AT JUNCTION OF A606 NEMMDR AND A607 WALTHAM ROAD,  
THORPE ARNOLD

For the entire circulatory carriageway.

A606 NEMMDR, THORPE ARNOLD

From its junction with A607 Waltham Road roundabout to a point 41 metres northwest of its junction with A607 Waltham Road roundabout.

A607 WALTHAM ROAD, THORPE ARNOLD

From its junction with A606 NEMMDR roundabout junction to a point 265 metres northeast of A606 NEMMDR roundabout junction.

A606 NEMMDR, THORPE ARNOLD

From its junction with A607 Waltham Road roundabout to a point 26 metres southeast of its junction with A607 Waltham Road roundabout.

A607 WALTHAM ROAD, THORPE ARNOLD

From its junction with A606 NEMMDR roundabout to its junction with Thorpe Road.

THORPE ROAD, MELTON MOWBRAY

From its junction with Waltham Road to a point 24 metres northeast of its junction with Crossfield Drive.

ROUNDAABOUT AT JUNCTION OF A606 NEMMDR, A606 BURTON ROAD AND  
BURTON ROAD, MELTON MOWBRAY

For the entire circulatory carriageway.

A606 NEMMDR, MELTON MOWBRAY

From its junction with A606 Burton Road roundabout to a point 38 metres northeast of its junction with A606 Burton Road roundabout.

A606 BURTON ROAD, MELTON MOWBRAY

From its junction with A606 NEMMDR roundabout to its junction with A606 Melton Road, Burton Lazars.

A606 MELTON ROAD, BURTON LAZARS

From its junction with A606 Burton Road to a point 188 metres southeast of its junction with Lime Street.

BURTON ROAD, MELTON MOWBRAY

From its junction with A606 NEMMDR roundabout to a point 50 metres southeast of its junction with Essex Close.

## **SCHEDULE 6**

### **IMPOSITION OF 50 MPH SPEED LIMIT**

A606 NOTTINGHAM ROAD, MELTON MOWBRAY

From a point 145 metres northwest of its junction with A606 NEMMDR roundabout to a point 761 metres northwest of its junction with Top Road.

SCALFORD ROAD, MELTON MOWBRAY

From a point 133 metres north of its junction with A606 NEMMDR roundabout to its junction with Melton Road, Scalford.

MELTON ROAD, SCALFORD

From its junction with Scalford Road to a point 79 metres west of its junction with Church Street, Scalford.

ROUNDAABOUT AT JUNCTION OF A606 NEMMDR, B676 SAXBY ROAD AND SAXBY ROAD, MELTON MOWBRAY

For the entire circulatory carriageway.

A606 NEMMDR, MELTON MOWBRAY

From its junction with B676 Saxby Road roundabout to a point 43 metres north of its junction with B676 Saxby Road roundabout.

A606 NEMMDR, MELTON MOWBRAY

From its junction with B676 Saxby Road roundabout to a point 29 metres south of its junction with B676 Saxby Road roundabout.

B676 SAXBY ROAD, MELTON MOWBRAY, BRENTINGBY, WYFORDBY, FREEBY AND SAXBY

From its junction with A606 NEMMDR roundabout to a point 218 metres southwest of its junction with Church Lane, Saxby.

SAXBY ROAD, MELTON MOWBRAY

From its junction with A606 NEMMDR roundabout to a point 235 metres northeast of its junction with Hudson Road.

THE COMMON SEAL of THE LEICESTERSHIRE )  
COUNTY COUNCIL was hereunto affixed )  
this thirtieth day of April 2026 )  
in the presence of :- )

MELTON ROAD, SCALFORD

From its junction with Scalford Road to a point 79 metres west of its junction with Church Street, Scalford.

ROUNDAABOUT AT JUNCTION OF A606 NEMMDR, B676 SAXBY ROAD AND SAXBY ROAD, MELTON MOWBRAY

For the entire circulatory carriageway.

A606 NEMMDR, MELTON MOWBRAY

From its junction with B676 Saxby Road roundabout to a point 43 metres north of its junction with B676 Saxby Road roundabout.

A606 NEMMDR, MELTON MOWBRAY

From its junction with B676 Saxby Road roundabout to a point 29 metres south of its junction with B676 Saxby Road roundabout.

B676 SAXBY ROAD, MELTON MOWBRAY, BRENTINGBY, WYFORDBY, FREEBY AND SAXBY

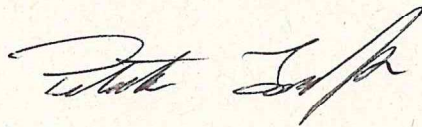
From its junction with A606 NEMMDR roundabout to a point 218 metres southwest of its junction with Church Lane, Saxby.

SAXBY ROAD, MELTON MOWBRAY

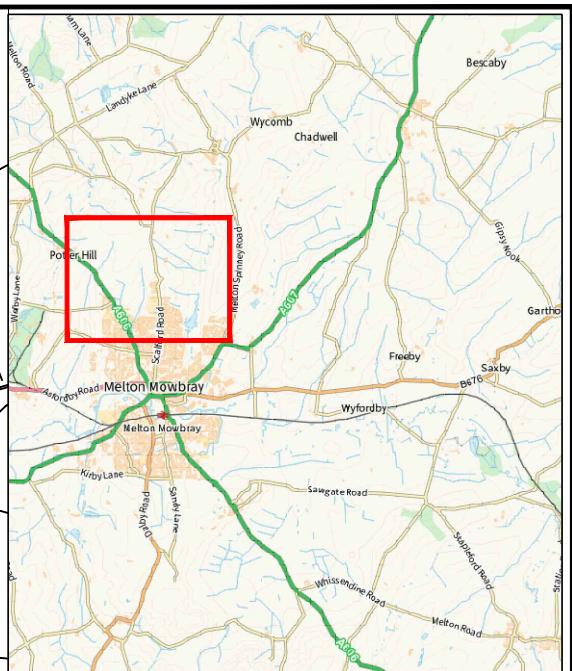
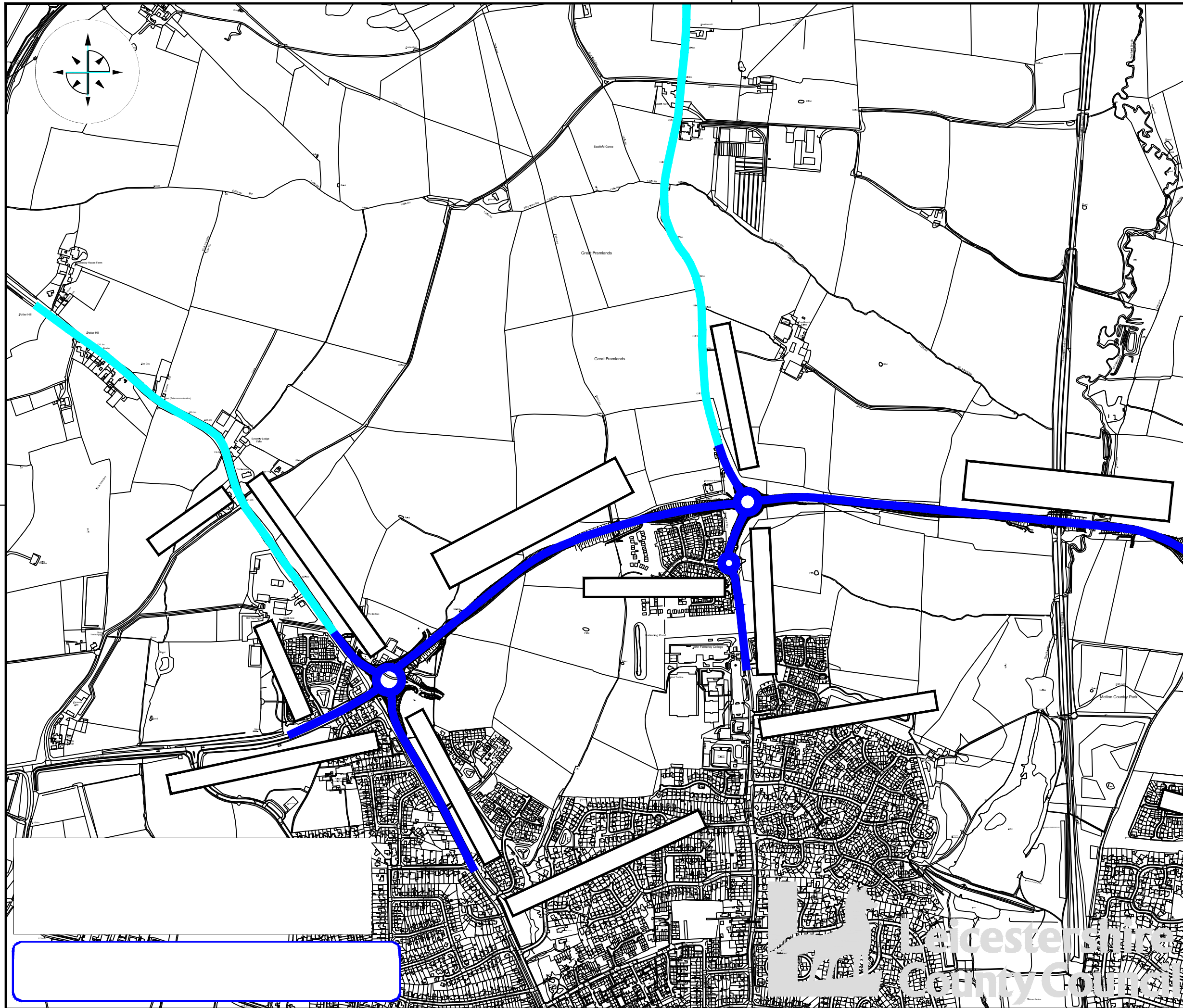
From its junction with A606 NEMMDR roundabout to a point 235 metres northeast of its junction with Hudson Road.

THE COMMON SEAL of THE LEICESTERSHIRE  
COUNTY COUNCIL was hereunto affixed  
this thirtieth day of April 2026  
in the presence of :-

)  
)  
)  
)



419243



**KEY:**

- █ PROPOSED IMPOSITION OF 40MPH SPEED LIMIT
- █ PROPOSED IMPOSITION OF 50MPH SPEED LIMIT

ALL OTHER SPEED LIMITS TO REMAIN



**ENVIRONMENT AND  
TRANSPORT DEPARTMENT**

**ANN CARRUTHERS  
DIRECTOR**

**NETWORK MANAGEMENT  
DEVELOPMENT & GROWTH**

**MELTON MOWBRAY**

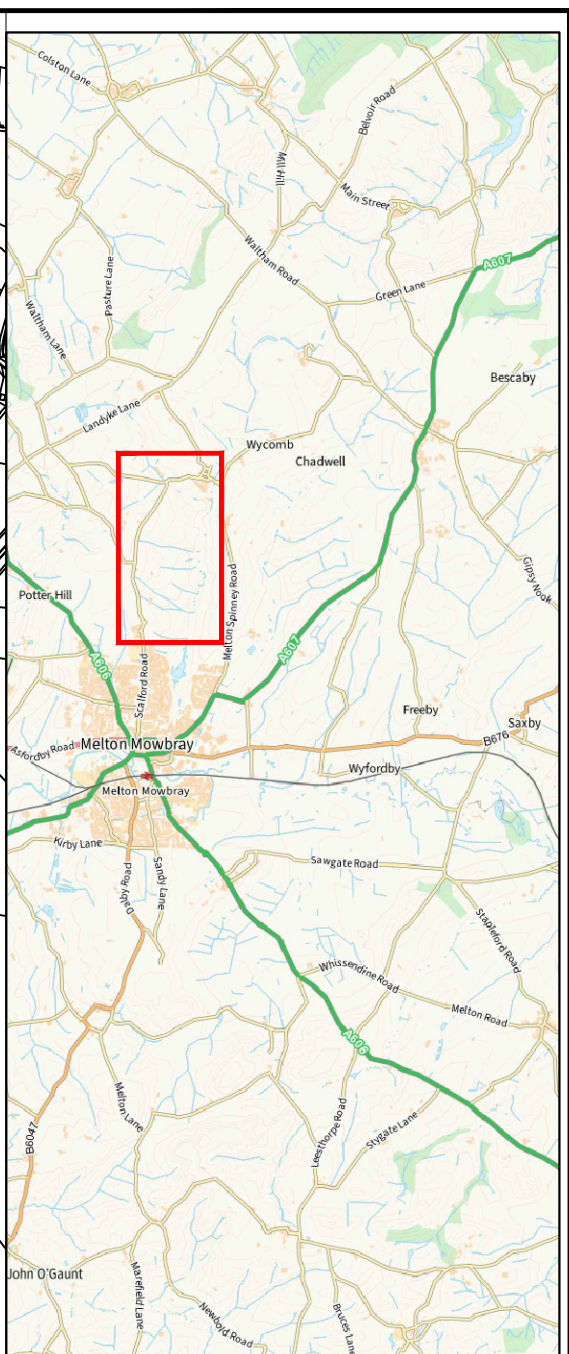
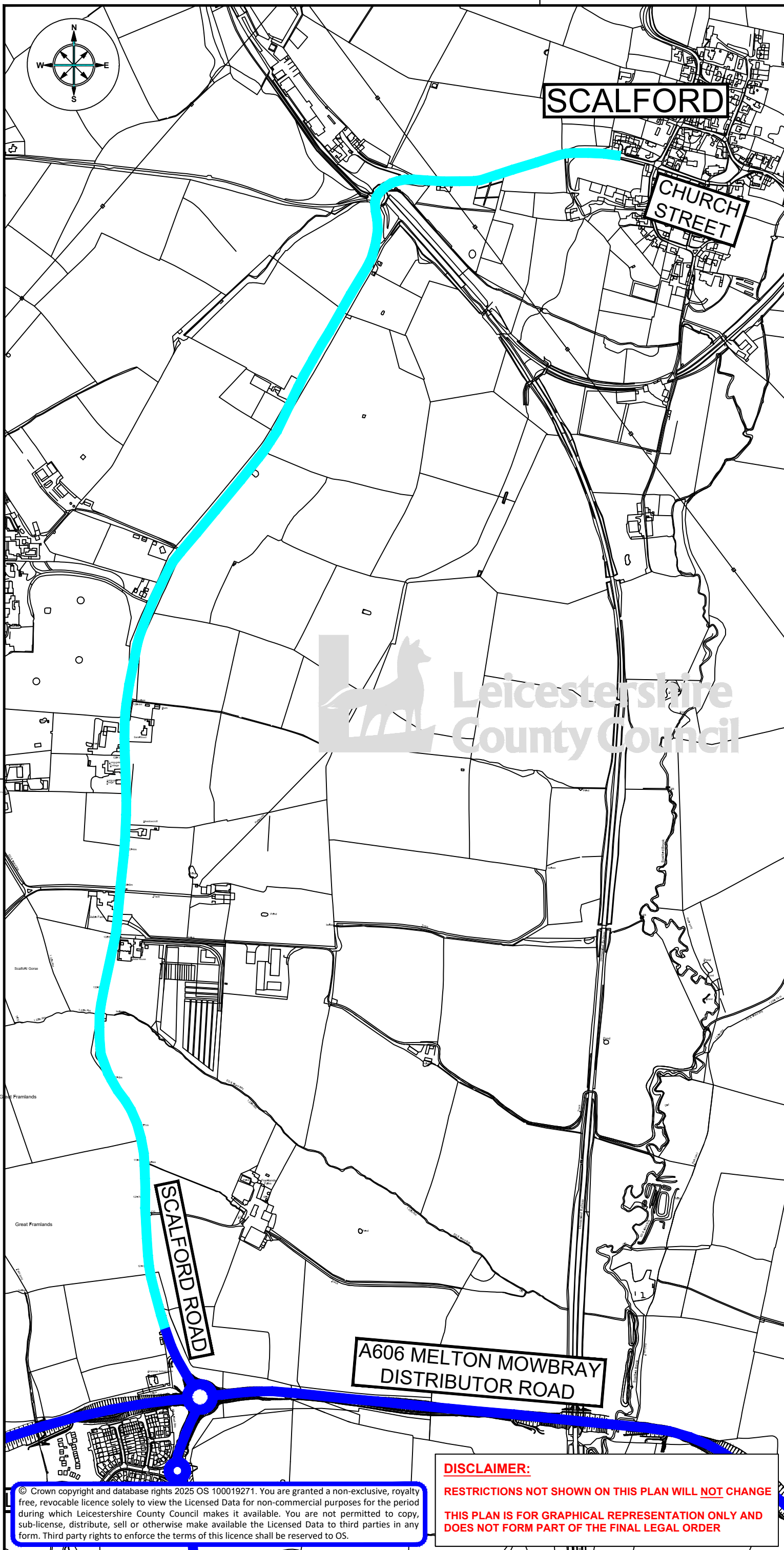
TITLE:  
**NEMMDR SPEED LIMITS CONSULTATION  
PLAN**

|                            |        |              |          |
|----------------------------|--------|--------------|----------|
| DRAWING NUMBER             |        | SCALE        |          |
| <b>TM5164/T1/1/1/SPEED</b> |        | <b>NTS</b>   |          |
| PREPARED BY:               | J KING | DATE:        | SEP 2025 |
| CHECKED BY:                | S BURT | SIZE :       | A3       |
| APPROVED BY:               | G NEAT | CORR. FILE : |          |

COUNTY HALL \* GLENFIELD \* LEICESTER \* LE3 8ST  
Tel: 01163 050001

[www.leicestershire.gov.uk](http://www.leicestershire.gov.uk)





**KEY:**

- PROPOSED IMPOSITION OF 40MPH SPEED LIMIT
- PROPOSED IMPOSITION OF 50MPH SPEED LIMIT

ALL OTHER SPEED LIMITS TO REMAIN



**Leicestershire  
County Council**

**ENVIRONMENT AND  
TRANSPORT DEPARTMENT**

**ANN CARRUTHERS  
DIRECTOR**

**NETWORK MANAGEMENT  
DEVELOPMENT & GROWTH**

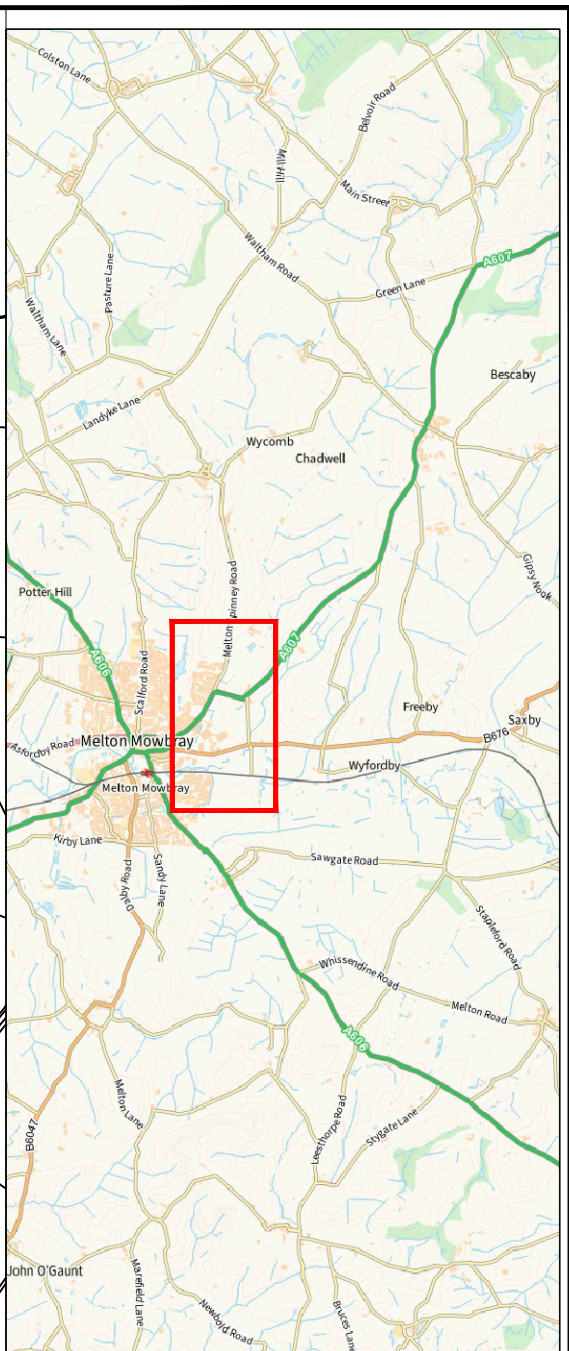
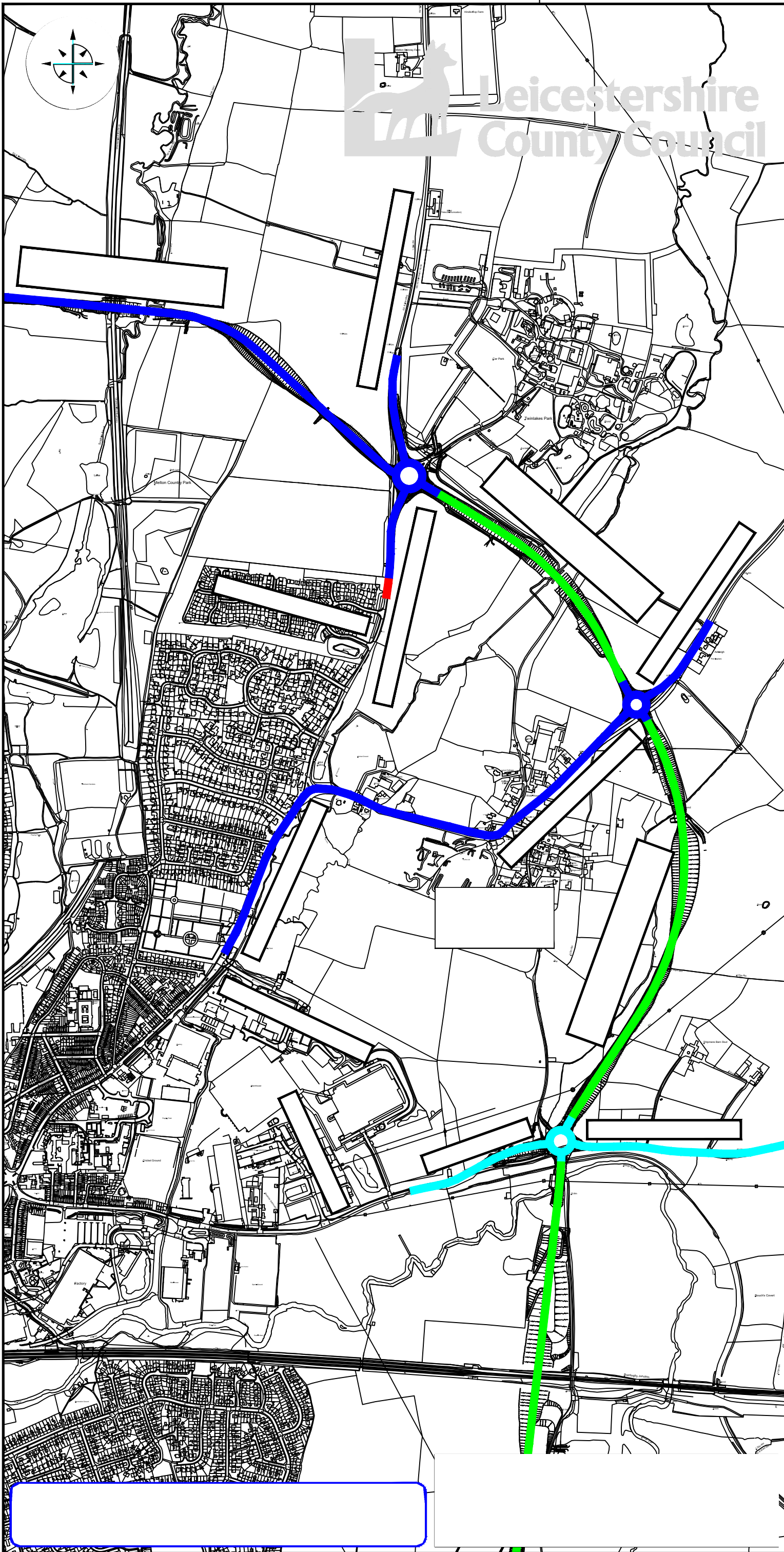
**MELTON MOWBRAY AND SCALFORD**

TITLE:  
**NEMMDR SPEED LIMITS CONSULTATION  
PLAN**

|  |                |
|--|----------------|
| DRAWING NUMBER   | SCALE          |
| <b>TM5164/T1/1/2/SPEED</b>   | <b>NTS</b>     |
| PREPARED BY: J KING  | DATE: SEP 2025 |
| CHECKED BY: S BURT   | SIZE: A3       |
| APPROVED BY: G NEAT  | CORR. FILE:    |
| COUNTY HALL * GLENFIELD * LEICESTER * LE3 8ST                            |                |
| Tel:0116 3050001   |                |
| <a href="http://www.leicestershire.gov.uk">www.leicestershire.gov.uk</a> |                |

**DISCLAIMER:**  
**RESTRICTIONS NOT SHOWN ON THIS PLAN WILL NOT CHANGE**  
**THIS PLAN IS FOR GRAPHICAL REPRESENTATION ONLY AND  
 DOES NOT FORM PART OF THE FINAL LEGAL ORDER**

© Crown copyright and database rights 2025 OS 100019271. You are granted a non-exclusive, royalty free, revocable licence solely to view the Licensed Data for non-commercial purposes for the period during which Leicestershire County Council makes it available. You are not permitted to copy, sub-license, distribute, sell or otherwise make available the Licensed Data to third parties in any form. Third party rights to enforce the terms of this licence shall be reserved to OS.



**KEY:**

- PROPOSED IMPOSITION OF 40MPH SPEED LIMIT
- PROPOSED IMPOSITION OF 50MPH SPEED LIMIT
- PROPOSED IMPOSITION OF 30MPH SPEED LIMIT
- NATIONAL SPEED LIMIT
- ALL OTHER SPEED LIMITS TO REMAIN



ENVIRONMENT AND  
TRANSPORT DEPARTMENT

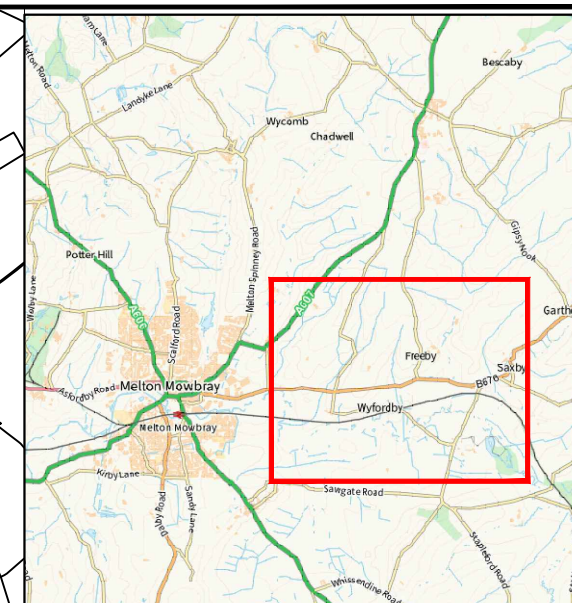
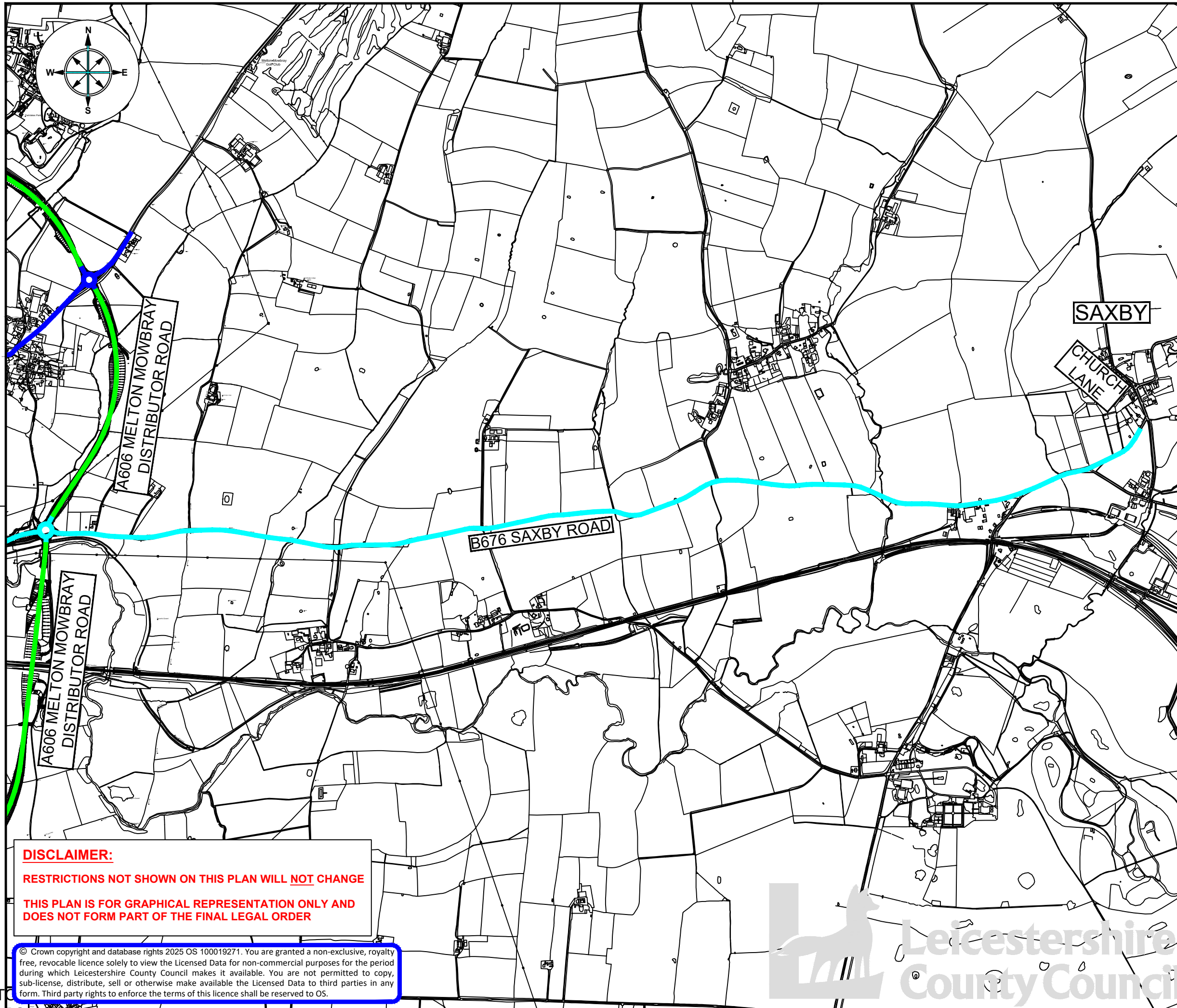
ANN CARRUTHERS  
DIRECTOR

**NETWORK MANAGEMENT  
DEVELOPMENT & GROWTH**

MELTON MOWBRAY

TITLE:  
**NEMMDR SPEED LIMITS CONSULTATION  
PLAN**

|  |                |
|--|----------------|
| DRAWING NUMBER   | SCALE          |
| TM5164/T1/1/3/SPEED  | NTS            |
| PREPARED BY: J KING  | DATE: SEP 2025 |
| CHECKED BY: S BURT   | SIZE: A3       |
| APPROVED BY: G NEAT  | CORR. FILE:    |
| COUNTY HALL * GLENFIELD * LEICESTER * LE3 8ST                            |                |
| Tel:0116 3050001   |                |
| <a href="http://www.leicestershire.gov.uk">www.leicestershire.gov.uk</a> |                |



- KEY:**
- PROPOSED IMPOSITION OF 40MPH SPEED LIMIT
  - PROPOSED IMPOSITION OF 50MPH SPEED LIMIT
  - NATIONAL SPEED LIMIT
- ALL OTHER SPEED LIMITS TO REMAIN



**ENVIRONMENT AND  
TRANSPORT DEPARTMENT**

**ANN CARRUTHERS  
DIRECTOR**

**NETWORK MANAGEMENT  
DEVELOPMENT & GROWTH**

**MELTON MOWBRAY, BRENTINGBY,  
WYFORDBY, FREEBY AND SAXBY**

TITLE:  
**NEMMDR SPEED LIMITS CONSULTATION  
PLAN**

|                            |                |
|----------------------------|----------------|
| DRAWING NUMBER             | SCALE          |
| <b>TM5164/T1/1/4/SPEED</b> | <b>NTS</b>     |
| PREPARED BY: J KING        | DATE: SEP 2025 |
| CHECKED BY: S BURT         | SIZE: A3       |
| APPROVED BY: G NEAT        | CORR. FILE:    |

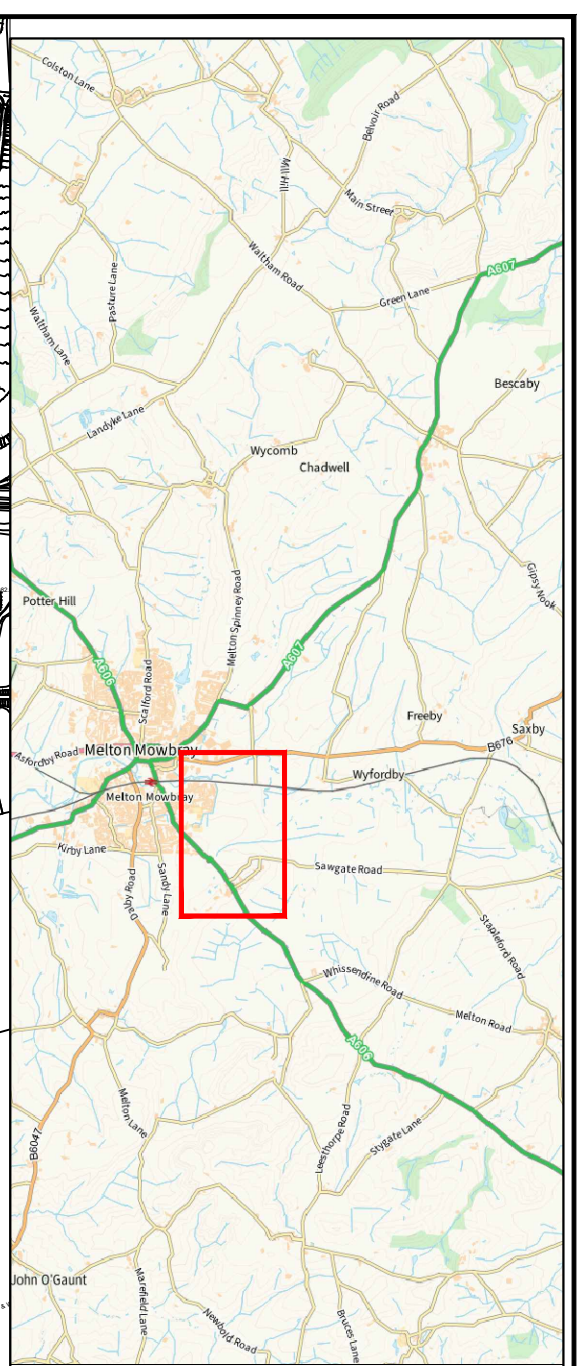
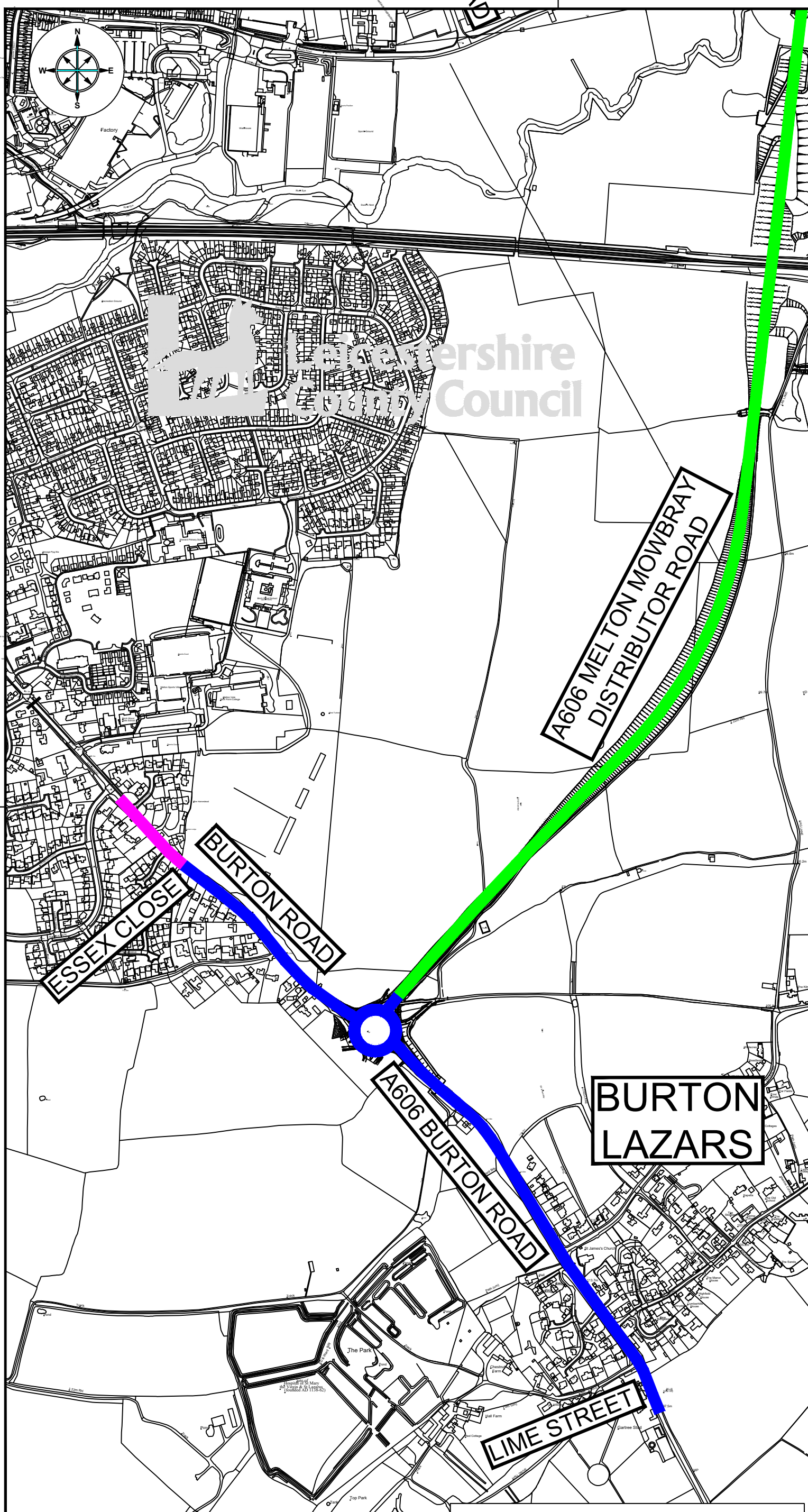
**COUNTY HALL \* GLENFIELD \* LEICESTER \* LE3 8ST**  
Tel: 01163 050001

[www.leicestershire.gov.uk](http://www.leicestershire.gov.uk)

**DISCLAIMER:**  
**RESTRICTIONS NOT SHOWN ON THIS PLAN WILL NOT CHANGE**  
**THIS PLAN IS FOR GRAPHICAL REPRESENTATION ONLY AND DOES NOT FORM PART OF THE FINAL LEGAL ORDER**

© Crown copyright and database rights 2025 OS 100019271. You are granted a non-exclusive, royalty free, revocable licence solely to view the Licensed Data for non-commercial purposes for the period during which Leicestershire County Council makes it available. You are not permitted to copy, sub-license, distribute, sell or otherwise make available the Licensed Data to third parties in any form. Third party rights to enforce the terms of this licence shall be reserved to OS.





- KEY:**
- █ PROPOSED IMPOSITION OF 40MPH SPEED LIMIT
  - █ PROPOSED IMPOSITION OF RESTRICTED ROAD (30MPH BY VIRTUE OF STREETLIGHTING)
  - █ NATIONAL SPEED LIMIT
- ALL OTHER SPEED LIMITS TO REMAIN



ENVIRONMENT AND TRANSPORT DEPARTMENT

ANN CARRUTHERS  
DIRECTOR

**NETWORK MANAGEMENT  
DEVELOPMENT & GROWTH**

MELTON MOWBRAY AND BURTON LAZARS

TITLE:  
**NEMMDR SPEED LIMITS CONSULTATION PLAN**

|                     |       |
|---------------------|-------|
| DRAWING NUMBER      | SCALE |
| TM5164/T1/1/5/SPEED | NTS   |

|                     |                |
|---------------------|----------------|
| PREPARED BY: J KING | DATE: SEP 2025 |
| CHECKED BY: S BURT  | SIZE: A3       |
| APPROVED BY: G NEAT | CORR. FILE:    |

COUNTY HALL \* GLENFIELD \* LEICESTER \* LE3 8ST  
Tel:0116 3050001

[www.leicestershire.gov.uk](http://www.leicestershire.gov.uk)

**DISCLAIMER:**  
RESTRICTIONS NOT SHOWN ON THIS PLAN WILL NOT CHANGE  
THIS PLAN IS FOR GRAPHICAL REPRESENTATION ONLY AND DOES NOT FORM PART OF THE FINAL LEGAL ORDER

© Crown copyright and database rights 2025 OS 100019271. You are granted a non-exclusive, royalty free, revocable licence solely to view the Licensed Data for non-commercial purposes for the period during which Leicestershire County Council makes it available. You are not permitted to copy, sub-license, distribute, sell or otherwise make available the Licensed Data to third parties in any form. Third party rights to enforce the terms of this licence shall be reserved to OS.