

## What do other parents and families say?

Funding has supported me to get back to work and helps with the cost of childcare.

*Parents, Whitwick*

My two year old daughter has some additional needs. Since attending nursery her physical and communication development has progressed beyond what I thought possible. I am really pleased with the way the nursery has worked with us and supported us as a family.

*Parent, Hinckley*

My son has grown in confidence since he started nursery. He has now made good progress in all areas of his development including his speech and language. He is ready for and is looking forward to starting school because the nursery arranged extra visits to his new class to help him settle in. I am glad we took up the offer of a free nursery place.

*Parent, Hinckley*

## Find out more about free childcare

For more details about free early education entitlement (FEEE) visit

[www.leicestershire.gov.uk/  
free-childcare-places](http://www.leicestershire.gov.uk/free-childcare-places)

To find a childcare provider in Leicestershire visit

[www.leicestershire.gov.uk/  
find-a-childcare-provider](http://www.leicestershire.gov.uk/find-a-childcare-provider)

Speak to someone at your local children's centre or use the Family Information Directory (FID) contact details below.

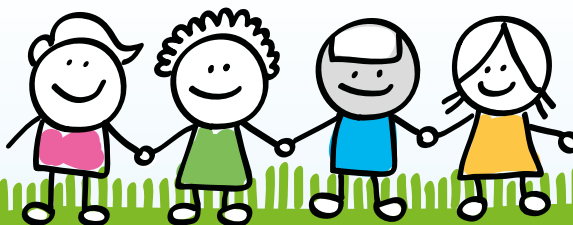
Phone: 0116 305 6545



# Choosing quality childcare

## Did you know?

All 3 and 4 year olds and some 2 year olds are entitled to 570 hours of free education and childcare per year.





## Finding a childcare provider

You can choose from:

- pre-schools and playgroups (sessional care)
- childminders (at home)
- day nurseries (part-time and full time care)

Childcare providers are registered with Ofsted who gives them one of four quality grades:

- outstanding
- good
- requires improvement
- inadequate

## Quality childcare helps children to:

- become more confident
- learn through play and have fun
- learn new words and extend their vocabulary
- experience new activities and learn new skills
- problem solve and test out their ideas
- become independent and get ready for school

## How do I choose?

Things to consider when choosing quality childcare:

- can children be active and play freely?
- are activities fun and inviting?
- do children look happy and involved in their learning ?
- are the adults playing with the children?
- do you think your child would be safe, well cared for and happy here?
- is the Ofsted report available to view?

## What might I need to find out?

You will need to feel happy and confident about your child's education and care. It is good to ask questions. Here are some ideas:

- who will be caring for my child?
- how do I know my child will be safe?
- how will they know what my child wants/needs?
- how do I find out about my child's day?
- what happens if my child doesn't settle, is ill or has an accident?



All 3 and 4 year olds are entitled to 570 hours of free education. This is usually taken as a maximum of 15 hours over 38 weeks (Leicestershire term dates) but can be taken as fewer hours over more weeks. Some 2 year olds are also eligible.

From September 2017 working families may be entitled to an additional 15 hours of free education per week.

