

Our plans to change residential care and short breaks for people with learning disabilities What do you think?



Questionnaire



Content

Page



Residential care and short
breaks services

3



Why change?

5



Our plans

6



What do you think?

8



About you

15



Thank you

18

Residential care and short breaks services



We are thinking about changing some of our residential care and short breaks services.



Before we go ahead we want to know what you think.

Please read through this document and then answer the questions which start on page 8.



We need to get your views by Sunday 15th April.



Leicestershire County Council will take your views into account when they make their final decision.



We are planning to:

- Close Hamilton Court in Coalville and The Trees (Ashwood and Beechwood) in Hinckley.

We will support the 11 people who live there to find somewhere else good to live and people to support them.



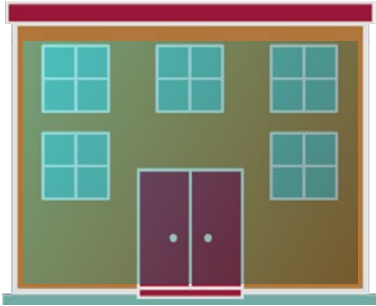
- Close the 6-bedded short breaks service at Smith Crescent in Coalville.

We will support the 23 users to find short breaks services in other parts of Leicestershire.



- Increase the short break facilities at The Trees in Hinckley whilst we improve The Trees (Ashwood and Beechwood) so it can be used as a short breaks facility.

Why change?



Hamilton Court, The Trees Residential Home and Smith Crescent are all getting old.



They are not very good for people with physical disabilities.



Fewer people are wanting to use residential care. It is better for people to be supported to live independently in the community.



People do want to use short breaks services.

Our Plans



Residential care homes.

We are planning to help people to find a new place to live with support.



We would meet with each person and their families to look at what they need.

We would work out what services each person needs.



We plan to close the residential care services.



We think that there is enough residential care for people from other organisations.



Short breaks

We are planning to close the short breaks service at Smith Crescent in Coalville.



We plan to be able to provide more short breaks service at The Trees in Hinckley.



We plan to do up the old residential care home so that it is good for short breaks.



This will provide 8 fully accessible bedrooms.



We want everyone who is getting a shorts break service to be able to carry on getting the service they need.



We think that these plans will save about £100,000 a year.

What do you think?



We want to know what you think about these plans.

Please answer these questions and send your answers back by Sunday 15th April.

Question 1. Are you (please just tick one box)



- ☐ Residential care service user
- ☐ Family or carer of a residential care service user
- ☐ Short breaks service user
- ☐ Family or carer of a short breaks service user
- ☐ Member of staff at Hamilton Court or Smith Crescent
- ☐ Member of staff at The Trees
- ☐ Working at a social care organisation
- ☐ Another care professional
- ☐ An interested member of the public
- ☐ Other - please say:



Question 2. If you are answering for an organisation, what is your name and the name of the organisation?



Your name:



Name of the Organisation:



Question 3. Do you agree or disagree with our plans to...

A. Close Hamilton Court Residential Home in Coalville?



Agree
strongly

☐

Agree

☐

Not sure

☐

Disagree

☐

Strongly
disagree

☐

Don't
know

☐

B. Close The Trees (Ashwood and Beechwood) Residential Home in Hinckley?



Agree
strongly

☐

Agree

☐

Not sure

☐

Disagree

☐

Strongly
disagree

☐

Don't
know

☐

What do you say this?





Question 4. Do you agree or disagree that the council should no longer provide a residential care?



Agree
strongly

☐

Agree

☐

Not sure

☐

Disagree

☐

Strongly
disagree

☐

Don't
know

☐

What do you say this?



Question 5. Do you agree or disagree with how we will support people to find other good places to live with support?



Agree
strongly

☐

Agree

☐

Not sure

☐

Disagree

☐

Strongly
disagree

☐

Don't
know

☐

What do you say this?





Question 6. Do you agree or disagree with our plans to close Smith Crescent short breaks service in Coalville?



Agree strongly

☐

Agree

☐

Not sure

☐

Disagree

☐

Strongly disagree

☐

Don't know

☐

What do you say this?



Question 7. Do you agree or disagree that the council should carry on providing short breaks services?



Agree strongly

☐

Agree

☐

Not sure

☐

Disagree

☐

Strongly disagree

☐

Don't know

☐

What do you say this?





Question 8. Do you agree or disagree with our plans to do up the buildings at Ashwood and Beechwood so they can be used for short breaks?



Agree strongly

☐

Agree

☐

Not sure

☐

Disagree

☐

Strongly disagree

☐

Don't know

☐

What do you say this?



Question 9. Do you agree or disagree with how we will help people who use the short breaks service at Smith Crescent to find a new service?



Agree strongly

☐

Agree

☐

Not sure

☐

Disagree

☐

Strongly disagree

☐

Don't know

☐

What do you say this?





Question 10. Are there any things we could do to make these plans better?



Question 11. Have you any other comments?

About you



Please answer these questions about you. This information will help us to be sure that we are getting the views of all the different communities in Leicestershire.



Question 12. Are you...

☐ Male? ☐ Female? ☐ Other?



Question 13. Is your gender the same as the one you were given when you were born?

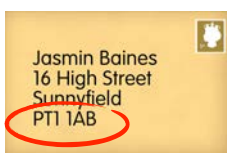
☐ Yes ☐ No



Question 14. How old are you?

☐ under 15 ☐ 45 - 64
☐ 15 - 24 ☐ 65 - 84
☐ 25 - 44 ☐ 85 and over

Question 15. What is your postcode?





Question 16. Do you look after someone aged 18 or over?

☐

Yes

☐

No



Question 17. Do you have a long term illness or disability?

☐

Yes

☐

No



Question 18. Are you...

☐

White

☐

Black

☐

Mixed

☐

Other

☐

Asian



Question 19. What is your religion?

☐

No religion

☐

Jewish

☐

Christian

☐

Muslim

☐

Buddhist

☐

Sikh

☐

Hindu

☐

Other



Question 20: Are you working for Leicestershire County Council?

☐

Yes

☐

No

Question 21: Are you...

☐

Bisexual - attracted to both men and women

☐

Gay - men who are attracted to men

☐

Lesbian - women who are attracted to women

☐

Heterosexual or straight- attracted to people of the opposite sex

☐

Other

Thank you



Thank you for giving us your views.

Please now send your answers back to:



**Residential Care Review consultation
Room 300B
Leicestershire County Council
Have Your Say
FREEPOST NAT 18685
Leicester, LE3 8XR**



You don't need to put a stamp on the envelope.



Please send your answers back by Sunday 15th April 2018.



If you need more information about these plans please contact us on:

Telephone: **0116 305 5060**



Email: **carehomes@leics.gov.uk**