

COVID-19: Data Update for Leicestershire

Week 1 of 2021

19th January 2021

Strategic Business Intelligence Team
Business Intelligence
Chief Executive's Department
Leicestershire County Council
County Hall, Glenfield
Leicester LE3 8RA

Tel 0116 305 6059
Email: kajal.lad@leics.gov.uk

Produced by the Strategic Business Intelligence Team at Leicestershire County Council.

Whilst every effort has been made to ensure the accuracy of the information contained within this report, Leicestershire County Council cannot be held responsible for any errors or omission relating to the data contained within the report.

What have we learnt from the newly released Covid-19 data?

A series of publicly available dashboards examining Covid-19 cases, deaths involving Covid-19 and a district summary are available at the below links. A summary narrative to support the data in these dashboards then follows.

- [Deaths involving Covid-19](#)
- [Covid-19 Summary at District Level](#)
- [PHE Weekly Covid-19 Cases](#)

1. 47 deaths¹ involving Covid-19 were recorded in Leicestershire in the last week

- As of week 1 2021 (up to 8th January), there have been a total of 1,013 deaths in Leicestershire. The number of weekly counts of deaths has decreased from 65 deaths in week 53 of 2020 to 47 deaths in week 1 of 2021.
- Of all deaths involving Covid-19 in Leicestershire, 653 (64.5%) were in hospital and 288 (28.4%) were in a care home.
- In week 1 in Leicestershire, there were 36 deaths in hospital, 8 deaths in a care home and three deaths in 'other settings'.

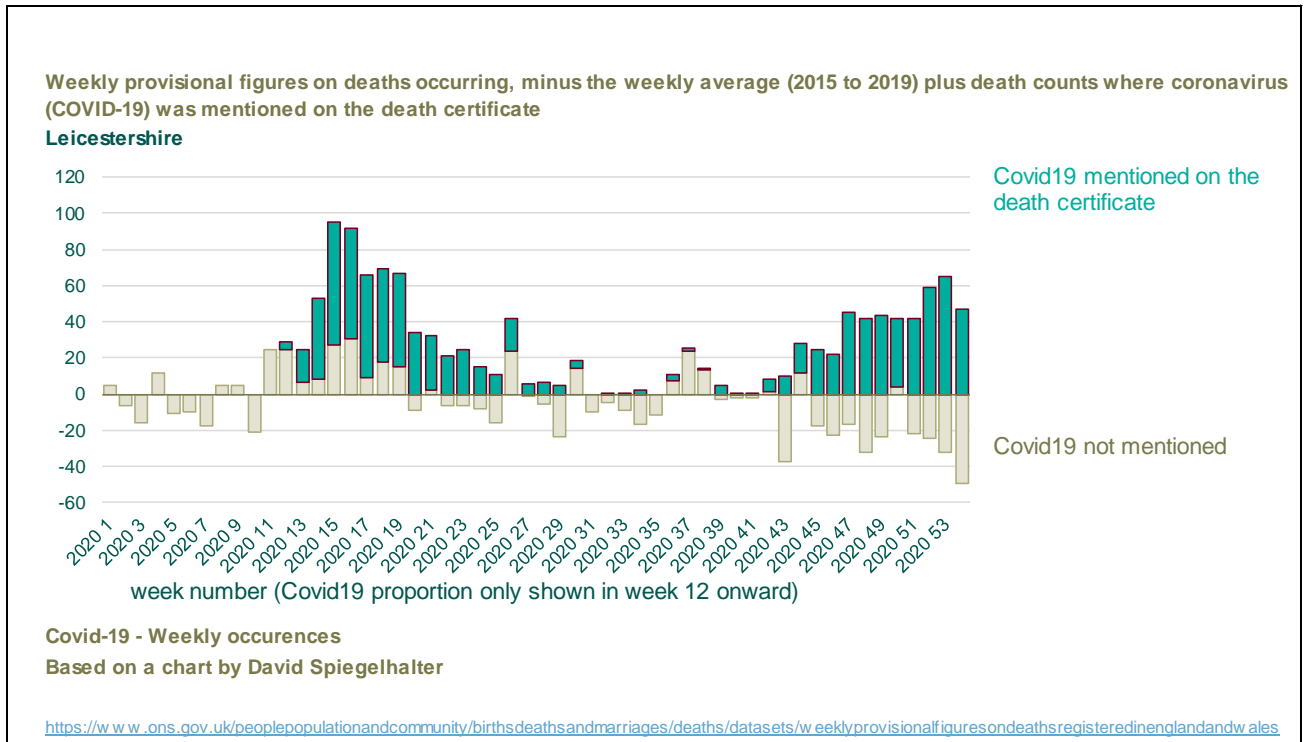
Deaths (numbers) by local authority and place of death, for deaths that occurred up to 8th January but were registered up to 16th January.

	Care Home		Elsewhere		Home		Hospice		Hospital		Total				Population
	Count	Rate	Count	Rate	Count	Rate	Count	Rate	Count	Rate	Count	Rate	LCI	UCI	
Blaby	29	28.9	1	1.0	8	8.0	1	1.0	99	98.6	138	137.4	115.4	162.4	100421
Charnwood	63	34.5	2	1.1	12	6.6	5	2.7	152	83.2	234	128.1	112.2	145.6	182643
Harborough	45	48.6	0	0.0	6	6.5	1	1.1	60	64.9	112	121.1	99.7	145.7	92499
H&B	43	38.2	0	0.0	7	6.2	5	4.4	105	93.4	160	142.3	121.1	166.2	112423
Melton	40	78.3	1	2.0	4	7.8	1	2.0	39	76.3	85	166.3	132.9	205.7	51100
NWLeics	34	33.3	2	2.0	8	7.8	3	2.9	107	104.8	154	150.8	127.9	176.6	102126
O&W	34	59.6	2	3.5	3	5.3	0	0.0	91	159.5	130	227.8	190.4	270.6	57056
Leicestershire	288	41.2	8	1.1	48	6.9	16	2.3	653	93.5	1013	145.1	136.3	154.3	698268
Rutland	13	32.7	0	0.0	3	7.6	2	5.0	18	45.3	36	90.7	63.5	125.6	39697
Leicester City	93	26.2	16	4.5	35	9.9	2	0.6	378	106.4	524	147.5	135.2	160.7	355218
LLR	394	36.0	24	2.2	86	7.9	20	1.8	1049	96.0	1573	143.9	136.9	151.2	1093183

¹ Death counts are based on death occurrences. The death is counted as involving Covid-19 if Covid-19 was mentioned on the death certificate. Please note, Covid-19 may not have been confirmed by a test. Source: [Office for National Statistics](#) (2019)

2. No excess deaths were recorded in the last week in Leicestershire

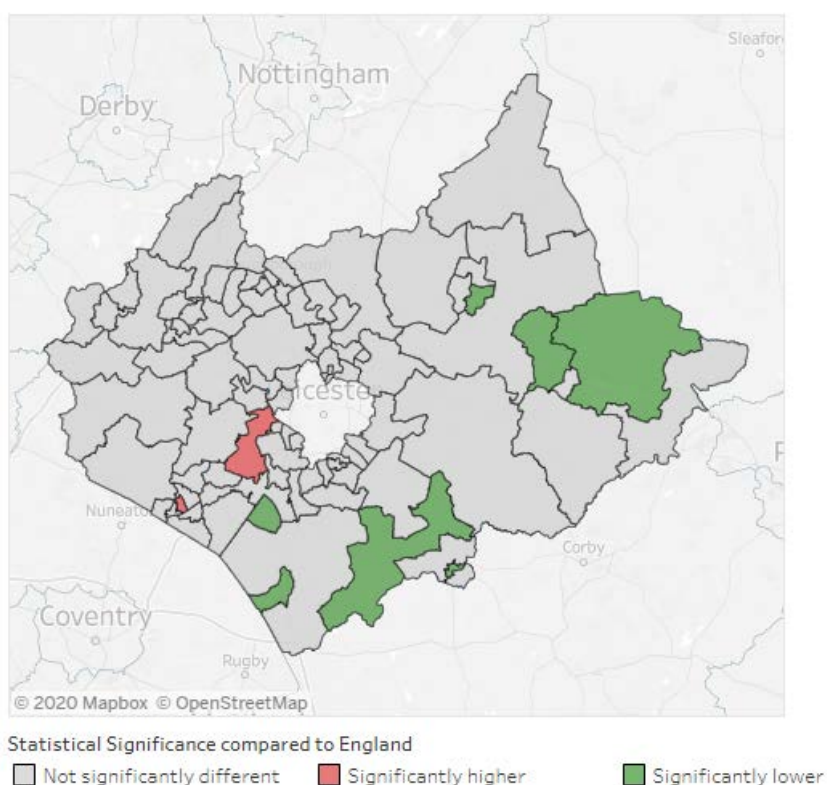
- Counts of excess deaths in Leicestershire have fluctuated over the previous ten weeks. There has been a decrease in all deaths seen in week 1 2021. The latest figures from ONS show that 163 deaths occurred in Leicestershire in week 1 of 2021. There were no excess deaths reported in the last week.
- The latest weeks data shows that there were 47 deaths that mentioned Covid-19 on the death certificate in week 1.



3. One area in Blaby and one area in Hinckley and Bosworth has a significantly higher percentage of deaths involving Covid-19 than the national percentage

- The map below examines the statistical significance compared to England, of the percentage of deaths involving Covid-19 by Middle Layer Super Output Area (MSOA) in Leicestershire and Rutland. These deaths occurred between 1st March and 30th November 2020 and were registered by 15th December 2020.
- Kirby Muxloe and Thurlaston in Blaby recorded 23 deaths involving Covid-19 in this time period, this represented 27.7% of all deaths. Hinckley Central in Hinckley and Bosworth recorded 22 deaths involving Covid-19 which represented 22.0% of all deaths.
- Nationally, deaths involving Covid-19 made up under a fifth (13.7%) of all deaths.
- Seven MSOAs in Leicestershire and Rutland have a significantly lower percentage of deaths involving Covid-19 compared to England. These are:
 - Fleckney, Kilworth & Foxton in Harborough (5, 6.2%)
 - Melton Mowbray South in Melton (3, 4.8%)
 - Oakham West, Langham & Whissendine in Rutland(3, 4.8%)
 - Market Harborough Central in Harborough (3, 4.5%)
 - Lutterworth in Harborough (4, 4.3%)
 - Broughton Astley in Harborough (2, 3.4%)
 - Market Overton, Cottesmore & Empingham in Rutland (0,0.0%)
- Further data examining deaths involving Covid-19 by local area is available in the dashboard available at [this link](#).

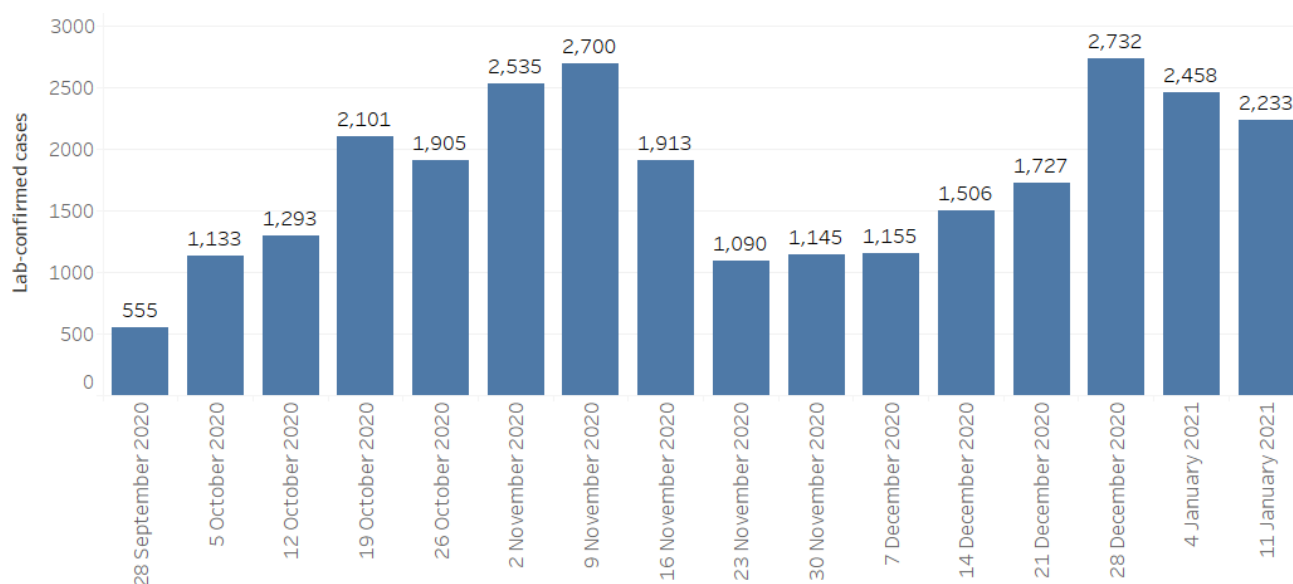
Statistical Significance compared to England of the deaths involving Covid-19 by Middle Layer Super Output Area, Leicestershire and Rutland, deaths occurring between 1st March 2020 and 30th November 2020.



4. Weekly counts of cases have decreased in the past week in Leicestershire

NOTE: On 16th November 2020, Public Health England updated the way it records the location of people who test positive or negative for Covid-19. It now prioritises addresses given at the point of testing over the details registered on a patient's NHS Summary Care Record. This better reflects the distribution of cases and testing. However, it may give rise to differences in previously reported numbers of cases and rates in some areas. The change has been retrospectively applied to tests carried out from 1st September 2020, and data reports were updated to reflect this change on 16th November 2020.

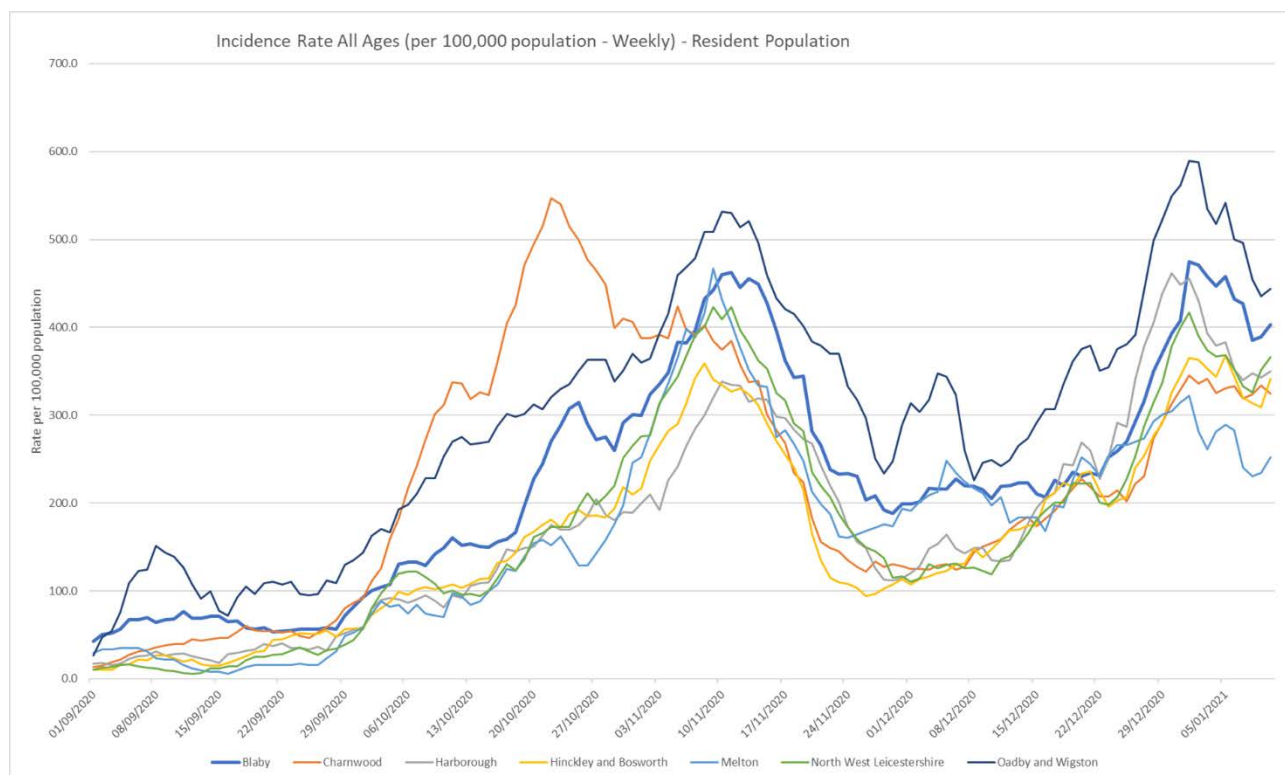
- As of 17th January, Leicestershire has recorded a total of 32,929 lab-confirmed cases of Covid-19. This data relates to pillar 1 and 2 cases.
- Throughout September and October to the second week of November the weekly counts of cases had shown an increasing trend in Leicestershire. For the two weeks following this, the counts of cases decreased. Since then, the weekly counts of cases have increased each week with the exception of the last two weeks where the counts of cases decreased.
- The latest weekly data shows 2,233 cases have been confirmed in Leicestershire in the last week. This count has decreased compared to the previous week where 2,458 cases were confirmed.



5. Oadby and Wigston have the highest weekly incidence rate of Covid-19 cases for people of all ages in the county

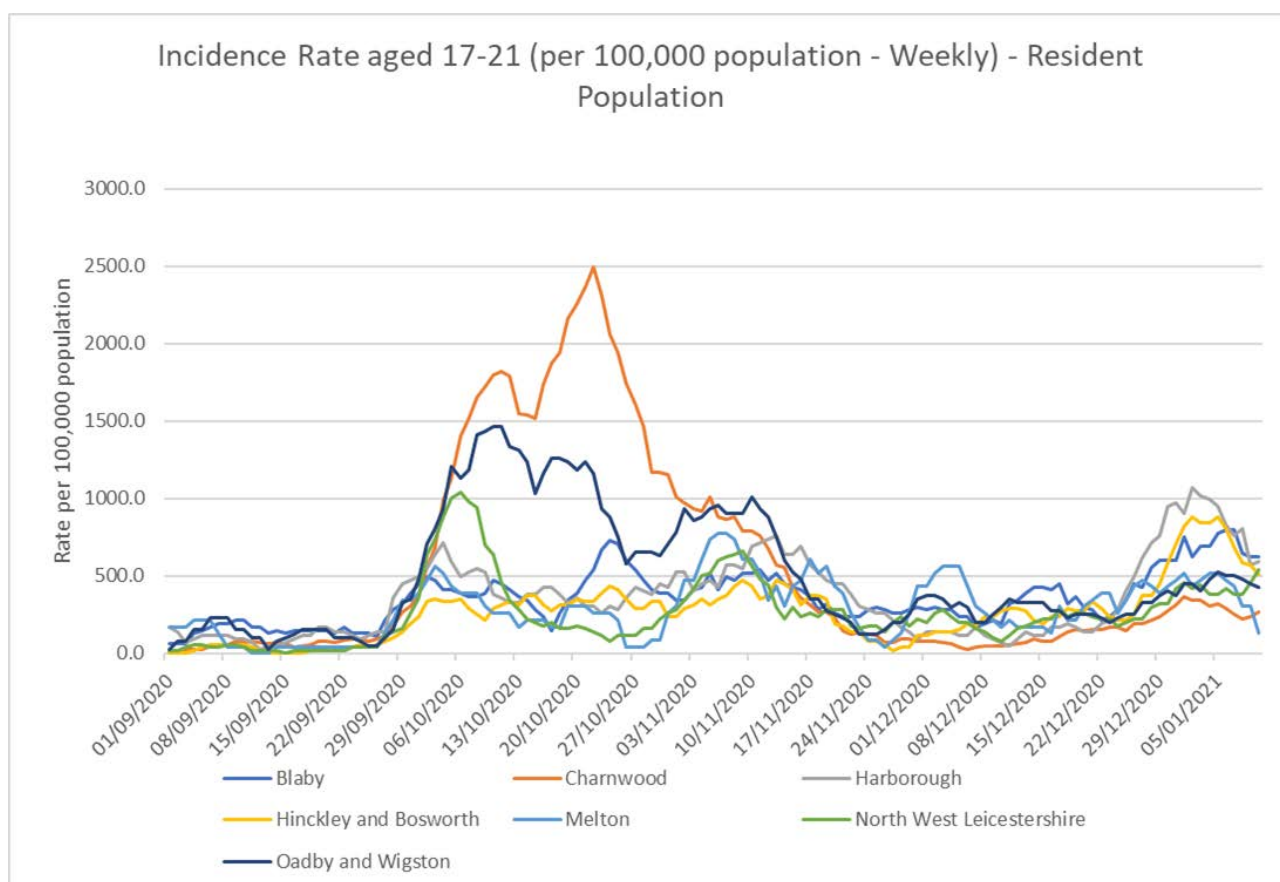
NOTE: On 16th November 2020, Public Health England updated the way it records the location of people who test positive or negative for Covid-19. It now prioritises addresses given at the point of testing over the details registered on a patient's NHS Summary Care Record. This better reflects the distribution of cases and testing. However, it may give rise to differences in previously reported numbers of cases and rates in some areas. The change has been retrospectively applied to tests carried out from 1st September 2020, and data reports were updated to reflect this change on 16th November 2020.

- The incidence rate for Covid-19 cases in Leicestershire had shown an increasing trend from mid-September to the second week of November. Throughout the remainder of November, the incidence rate in Leicestershire had shown a declining trend for people of all ages. Since then, the incidence rate in Leicestershire has fluctuated. The incidence rate in Leicestershire is lower (352.2 per 100,000 population) than the national rate (520.4 per 100,000 population) as of 10th January 2021.
- The latest weekly incidence rates of Covid-19 cases for people of all ages (as of 10th January) show that all area rates in Leicestershire are lower than the national rate (520.4 per 100,000 population):
 - Oadby and Wigston; 443.7 per 100,000 population (253 cases)
 - Blaby; 402.9 per 100,000 (409 cases)
 - North West Leicestershire; 365.8 per 100,000 (379 cases)
 - Harborough; 349.7 per 100,000 (328 cases)
 - Hinckley and Bosworth; 341.2 per 100,000 (386 cases)
 - Charnwood; 324.5 per 100,000 (603 cases)
 - Melton; 251.9 per 100,000 (129 cases)



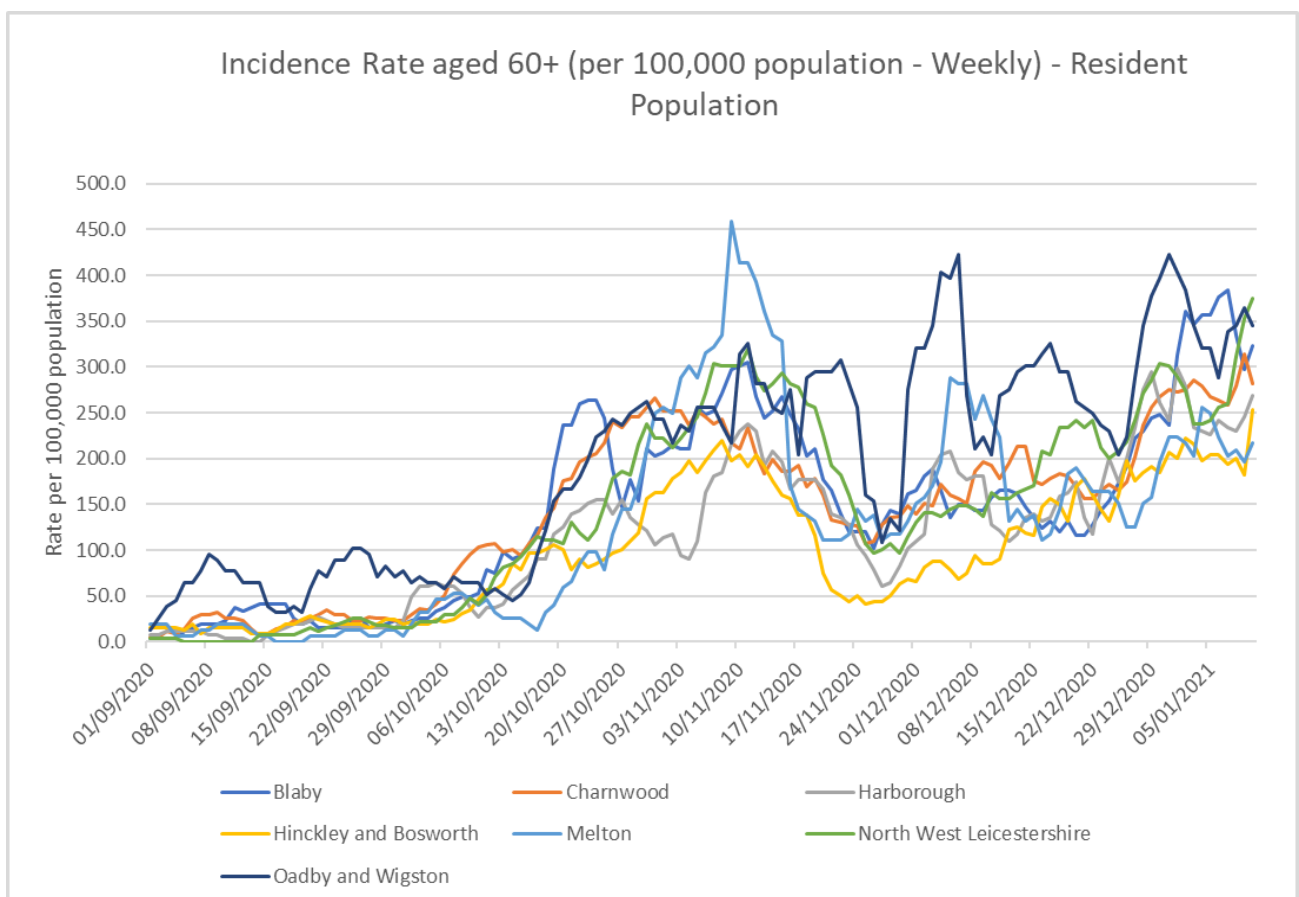
6. Blaby has the highest weekly incidence rate of Covid-19 cases for people aged 17-21 in the county

- The incidence rate for Covid-19 cases in people aged 17-21 in Leicestershire had been increasing since mid-September and peaked around the 22nd October. From the 22nd October to the end of November, the incidence rate for Covid-19 cases in people aged 17-21 in Leicestershire declined, with the exception of the first week of November where the rate fluctuated. Since the end of November the incidence rate for Covid-19 cases in people aged 17-21 in Leicestershire has fluctuated, with the exception of the last week of December where the rate showed an increasing trend.
- As of the 10th of January, the rate for Leicestershire (408.4 per 100,000 population) is lower than the national rate for this age group (641.7 per 100,000 population).
- The latest weekly incidence rates of Covid-19 cases for people aged 17-21 (as of 10th January) show that all area rates in Leicestershire are lower than the national rate (641.7 per 100,000 population):
 - Blaby; 624.5 per 100,000 (29 cases)
 - Harborough; 593.7 per 100,000 (25 cases)
 - North West Leicestershire; 540.8 per 100,000 (27 cases)
 - Hinckley and Bosworth; 509.9 per 100,000 (26 cases)
 - Oadby and Wigston; 428.4 per 100,000 (17 cases)
 - Charnwood; 270.5 per 100,000 (47 cases)
 - Melton; 129.8 per 100,000 (3 cases)



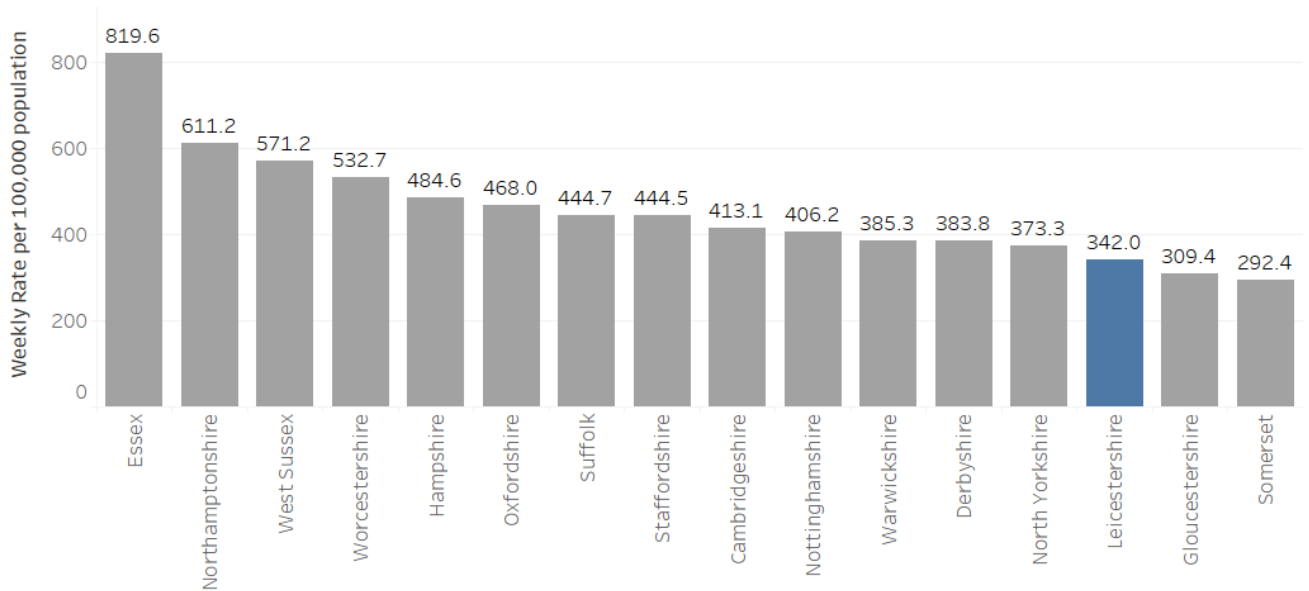
7. North West Leicestershire has the highest weekly incidence rate of Covid-19 cases for people aged 60+ in the county

- The incidence rate for Covid-19 cases in people aged 60+ in Leicestershire had been increasing from the end of September to the 11th of November. Since then, the incidence rate for Covid-19 cases in people aged 60+ in Leicestershire has declined, with the exception of the first three weeks of December where the rate fluctuated and the last three weeks where the rate has shown an increasing trend. The rate for Leicestershire (294.4 per 100,000 population) is lower than the national rate (413.6 per 100,000 population) as of 10th January.
- The latest weekly incidence rates of Covid-19 cases for people aged 60+ (as of 10th January) show that all area rates in Leicestershire are lower than the national rate (413.6 per 100,000 population):
 - North West Leicestershire; 374.7 per 100,000 (101 cases)
 - Oadby and Wigston; 345.5 per 100,000 (54 cases)
 - Blaby; 323.5 per 100,000 (86 cases)
 - Charnwood; 281.6 per 100,000 (123 cases)
 - Harborough; 268.3 per 100,000 (71 cases)
 - Hinckley and Bosworth; 253.6 per 100,000 (81 cases)
 - Melton; 216.5 per 100,000 (33 cases)



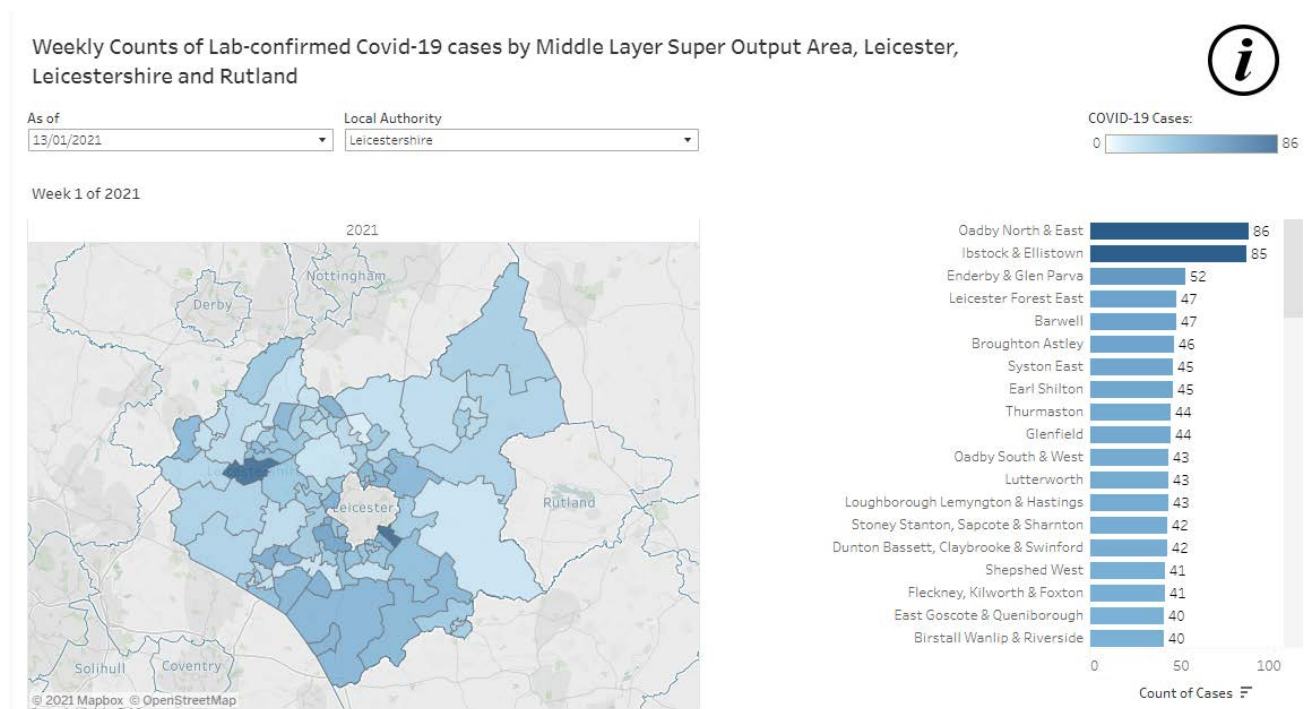
8. Leicestershire has the 3rd lowest weekly rate of Covid-19 cases out of its CIPFA similar areas

- There has been a decrease in the weekly rate of Covid-19 cases in Leicestershire from 373.4 (per 100,000 population) in week 53 of 2020 to 342.0 (per 100,000 population) in week 1 of 2021.
- As of week 1 (4th January to 10th January 2021), Leicestershire is ranked 122nd (highest) out of 149 upper tier local authorities and ranked the 3rd (lowest) out of its CIPFA similar areas.



9. The MSOA with the highest count of Covid-19 cases in the last week was Oadby North & East

- Between 4th January to 10th January 2021 (week 1 of 2021), the Middle Super Output Area (MSOA) with the highest count of confirmed cases of Covid-19 was Oadby North & East with 86 reported cases. This was followed by:
 - Ibstock & Ellistown (85)
 - Enderby & Glen Parva (52)
 - Leicester Forest East (47), Barwell (47)
 - Broughton Astley (46)
 - Syston East (45), Earl Shilton (45)
 - Thurmaston (44), Glenfield (44)
 - Oadby South & West (43), Lutterworth (43), Loughborough Lemyngton & Hastings (43)
 - Stoney Stanton, Sapcote & Sharnton (42), Dunton Bassett, Claybrooke & Swinford (42)
 - Shepshed West (41), Fleckney, Kilworth & Foxton (41)
 - East Goscote & Queniborough (40), Birstall Wanlip & Riverside (40)
 - Donisthope & Blackfordby (39)
 - Coalville (38)
 - Kibworth & Great Glen (37)
 - Whetstone (36), Burbage Sketchley & Stretton (36)
 - Blaby Village (35)
- All other areas recorded less than 35 cases in the last week.
- Areas that recorded between zero and two cases in the last week have been suppressed due to data disclosure and are represented as white in the map below.



10. District Level Summary

- **Oadby & Wigston** continues to have the highest rate of Covid-19 cases and deaths in the county. The rate of cumulative cases is significantly higher in comparison to the England average.
- From the beginning of September to the 9th November, the weekly counts of cases had shown an increasing trend in Oadby and Wigston. Since then, the weekly counts of cases have fluctuated.
- The weekly counts of cases have decreased from 283 in w/c 4th January to 189 in w/c 11th January.
- The latest weeks data on death occurrences shows seven deaths involving Covid-19 were recorded in Oadby & Wigston in week 1 of 2021; five deaths occurred in a hospital and two deaths occurred in a care home.

- **Melton** has the lowest rate of Covid-19 cases and the second highest rate of deaths in the county. The rate of cumulative cases is significantly lower than the England average.
- From mid-September, the weekly counts of cases had been increasing week on week in Melton, showing a peak around the 9th of November. Since then, the weekly counts of cases have fluctuated.
- The latest weekly counts of cases have decreased from 123 in w/c 4th January to 107 in w/c 11th January.
- The latest weekly count of deaths involving Covid-19 shows that two deaths occurred in Melton in week 1 of 2021; both deaths occurred in a hospital.

- **North West Leicestershire** has the third lowest rate of Covid-19 cases and the third highest rate of deaths in the county. The rate of cumulative cases is significantly lower than the England average.
- From early September to the 9th November an increasing trend in the weekly counts of cases had been witnessed in North West Leicestershire. Following this, the weekly counts of cases decreased each week for four weeks. Since then, the weekly counts of cases have fluctuated.
- The latest weekly counts of cases have increased from 345 in w/c 4th January to 347 in w/c 11th January.
- The latest weekly count of deaths involving Covid-19 shows that nine deaths occurred in North West Leicestershire in week 1 of 2021; six deaths occurred in a hospital, two deaths occurred in a care home and one death occurred in 'other settings'.

- **Hinckley & Bosworth** has the second lowest rate of Covid-19 cases and fourth highest rate of deaths in the county. The rate of cumulative cases is significantly lower compared to the England average.
- From mid-September to the 9th of November, the weekly counts of cases had increased each week in Hinckley and Bosworth. Since then, the weekly counts of cases have fluctuated.
- The latest weekly counts of cases have increased from 362 in w/c 4th January to 386 in w/c 11th January.
- The latest weeks data shows six deaths involving Covid-19 were recorded in Hinckley & Bosworth in week 1 of 2021; all six deaths occurred in hospital.

- **Blaby** has the second highest rate of Covid-19 cases in the county and the third lowest rate of deaths. The rate of cumulative cases is not significantly different to the England average.
- From mid-September, the weekly counts of cases in Blaby had shown an increasing trend, with a peak around the 9th of November. Since then, the weekly counts of cases have fluctuated, with the exception of the last three weeks of December and the first week of January where the weekly counts of cases increased each week.
- The latest weekly counts of cases have decreased from 433 in w/c 4th January to 387 in w/c 11th January.
- The latest weeks data shows four deaths involving Covid-19 were recorded in Blaby in week 1 of 2021; all four deaths occurred in hospital.

- **Charnwood** has the third highest rate of Covid-19 cases and the second lowest rate of deaths in the county. The rate of cumulative cases is significantly lower in comparison to the England average.
- The weekly counts of cases in Charnwood had increased each week from early September to mid-October, showing a peak around the 19th of October. Between the 19th of October and the 23rd November the weekly counts of cases showed a declining trend. Since then, the weekly counts of cases have increased each week in Charnwood, with the exception of the last two weeks where the counts of cases decreased.
- The latest weekly counts of cases have decreased from 593 in w/c 4th January to 551 in w/c 11th January.
- The latest weeks data shows 14 deaths involving Covid-19 were recorded in Charnwood in week 1 of 2021; 10 deaths occurred in a hospital, three deaths occurred in a care home and one death occurred in 'other settings'.

- **Harborough** has the fourth highest rate of Covid-19 cases and the lowest rate of deaths in the county. The rate of cumulative cases is significantly lower in comparison to the England average.
- From the beginning of September to the 9th November, the weekly counts of cases had shown an increasing trend in Harborough. Between the w/c 9th November and the w/c 7th December the weekly counts of cases decreased each week. Since then, the weekly counts of cases have increased each week in Harborough, with the exception of the last two weeks where the counts of cases decreased.
- The latest weekly counts of cases have decreased from 319 in w/c 4th January to 266 in w/c 11th January.
- The latest weeks data shows five deaths involving Covid-19 were recorded in Harborough in week 1 of 2021; three deaths occurred in a hospital, one death occurred in a care home and one death occurred in 'other settings'.

If you require information contained in this leaflet in another version e.g. large print, Braille, tape or alternative language please telephone: 0116 305 6803, Fax: 0116 305 7271 or Minicom: 0116 305 6160.

ਜੇ ਆਪ ਆ ਆਡਿਨੀ ਆਪਨੀ ਆਥਾਮਾਂ ਸਮਝਵਾਮਾਂ ਥੋੜੀ ਮਦਦ ਚੰਝਨਾਂ ਡੋ ਨੋ 0116 305 6803 ਨੰਬਰ ਪਰ ਫ਼ੋਨ ਕਰਥੋ ਅਨੇ ਅਮੇ ਆਪਨੇ ਮਦਦ ਕਰਵਾ ਆਵਥਾ ਕਰੀਥੁੰ.

ਜੇਕਰ ਤੁਹਾਨੂੰ ਇਸ ਜਾਣਕਾਰੀ ਨੂੰ ਸਮਝਣ ਵਿਚ ਕੁਝ ਮਦਦ ਚਾਹੀਦੀ ਹੈ ਤਾਂ ਕਿਰਪਾ ਕਰਕੇ 0116 305 6803 ਨੰਬਰ ਤੇ ਫ਼ੋਨ ਕਰੋ ਅਤੇ ਅਸੀਂ ਤੁਹਾਡੀ ਮਦਦ ਲਈ ਕਿਸੇ ਦਾ ਪ੍ਰਬੰਧ ਕਰ ਦਵਾਂਗੇ।

এই তথ্য নিজের ভাষায় বুঝার জন্য আপনার যদি কোন সাহায্যের প্রয়োজন হয়, তবে 0116 305 6803 এই নম্বরে ফোন করলে আমরা উপযুক্ত ব্যক্তির ব্যবস্থা করবো।

اگر آپ کو یہ معلومات سمجھنے میں کچھ مدد درکار ہے تو براہ مہربانی اس نمبر پر کال کریں اور ہم آپ کی مدد کے لئے کسی کا انتظام کر دیں گے۔ 0116 305 6803

假如閣下需要幫助，用你的語言去明白這些資訊，請致電 0116 305 6803，我們會安排有關人員為你提供幫助。

Jeżeli potrzebujesz pomocy w zrozumieniu tej informacji w Twoim języku, zadzwoń pod numer 0116 305 6803, a my Ci dopomożemy.

Strategic Business Intelligence Team
Strategy and Business Intelligence Branch

Chief Executive's Department
Leicestershire County Council
County Hall
Glenfield
Leicester
LE3 8RA
ri@leics.gov.uk
www.lsr-online.org