

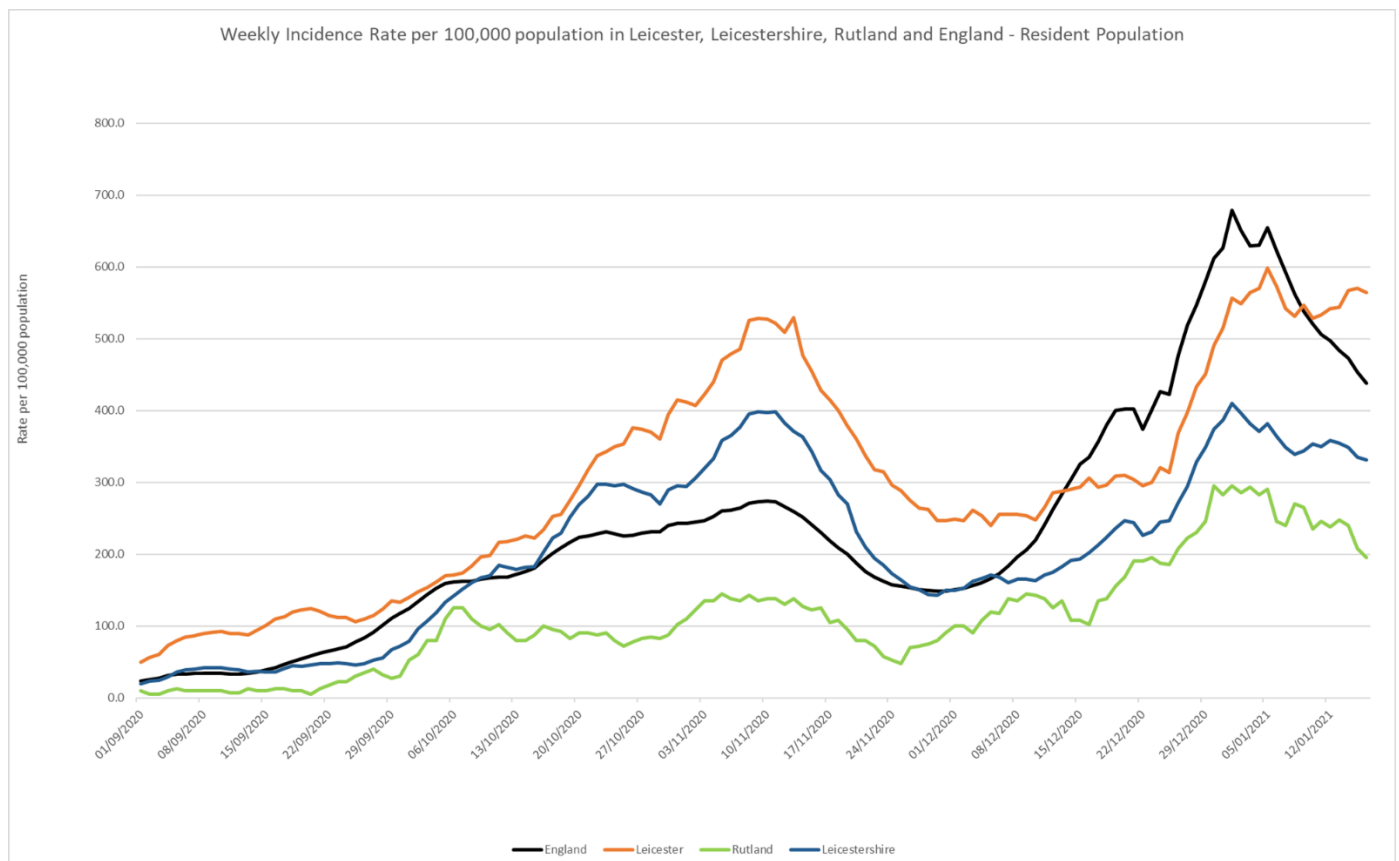
## COVID-19: Data Update for Leicestershire

Period 13<sup>th</sup> January 2021 to 19<sup>th</sup> January 2021

### Headline Summary

#### 1. Trend in Weekly Incidence Rate (All ages) – Leicester, Leicestershire, Rutland and England

- The national rate has decreased from 453.6 (period 12<sup>th</sup> Jan to 18<sup>th</sup> Jan) to 437.8 per 100,000 population (period 13<sup>th</sup> Jan to 19<sup>th</sup> Jan). This latest rate reflects a percentage change decrease of 19% compared to the previous 7 day period for England.
- The Leicestershire rate has increased from 335.2 (period 12<sup>th</sup> Jan to 18<sup>th</sup> Jan) to 331.4 per 100,000 population (period 13<sup>th</sup> Jan to 19<sup>th</sup> Jan). This latest rate reflects a percentage change decrease of 4% compared to the previous 7 day period for Leicestershire. The rate in Leicestershire is lower than the national average.
- The rate for Leicester City stands at 564.3 per 100,000 population and is above the national average. The rate for Rutland stands at 195.4 per 100,000 population and is below the national average.

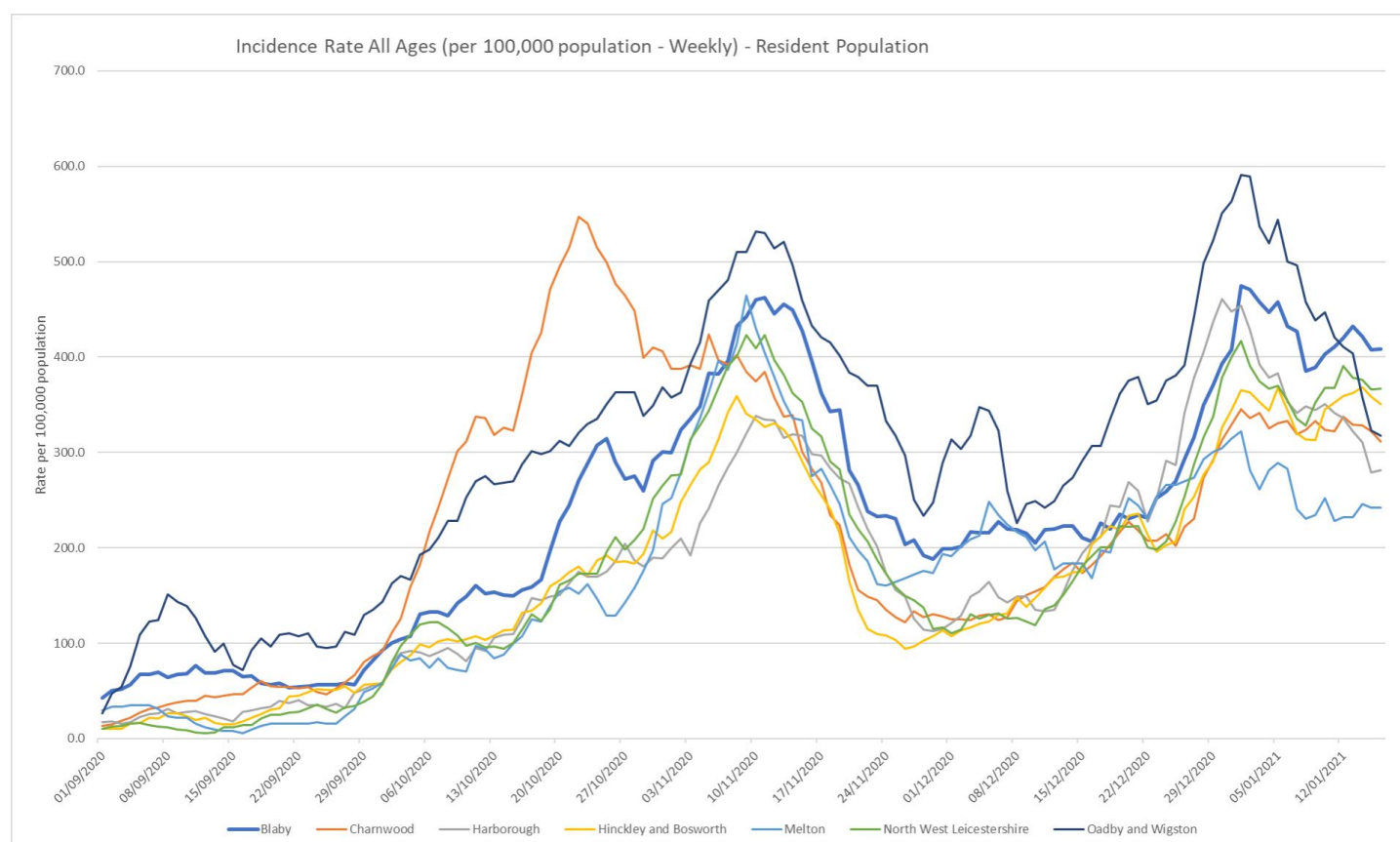


Source: PHE Power BI Line Lists

## 2. Trend in Weekly Incidence Rate (all ages) – Leicestershire Districts

- Blaby has the highest rate in the County (408.8 per 100,000 population) followed by NWL (366.8), H&B (350.9), O&W (317.5), Charnwood (311.5), Harbrough (281.4), and Melton (242.1). Compared to the previous week, most areas (apart from Blaby, H&B, Melton and NWL) have decreased, like nationally.

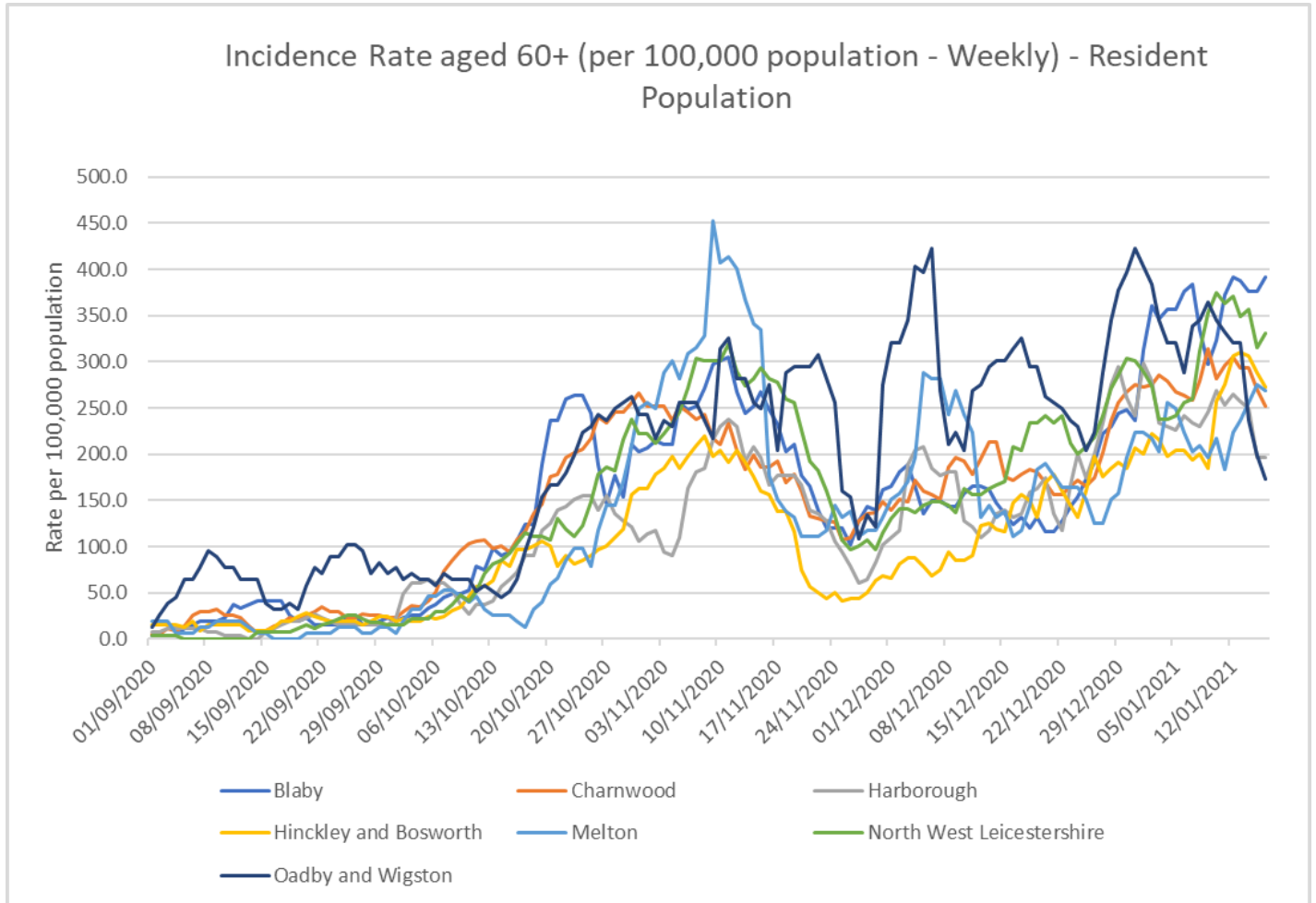
Indicator	Blaby	Charnwood	Harbrough	Hinckley & Bosworth	Melton	NW Leicestershire	Oadby and Wigston	Leicestershire	England
Weekly incidence rate per 100,000 population (All Ages)	408.8	311.5	281.4	350.9	242.1	366.8	317.5	331.4	437.8
Weekly count of cases (All Ages)	415	579	264	397	124	380	181	2340	246404
Percentage change in cases from previous 7 days (All Ages)	5%	-6%	-18%	12%	3%	4%	-28%	-4%	-19%
Weekly incidence rate per 100,000 population (60+)	391.2	251.9	196.5	272.4	268.9	330.2	172.8	273.5	343.4
Percentage individuals testing positive (weekly)	14.4%	12.1%	10.5%	12.6%	9.8%	13.3%	8.9%		13.9%



Source: PHE Power BI Line Lists

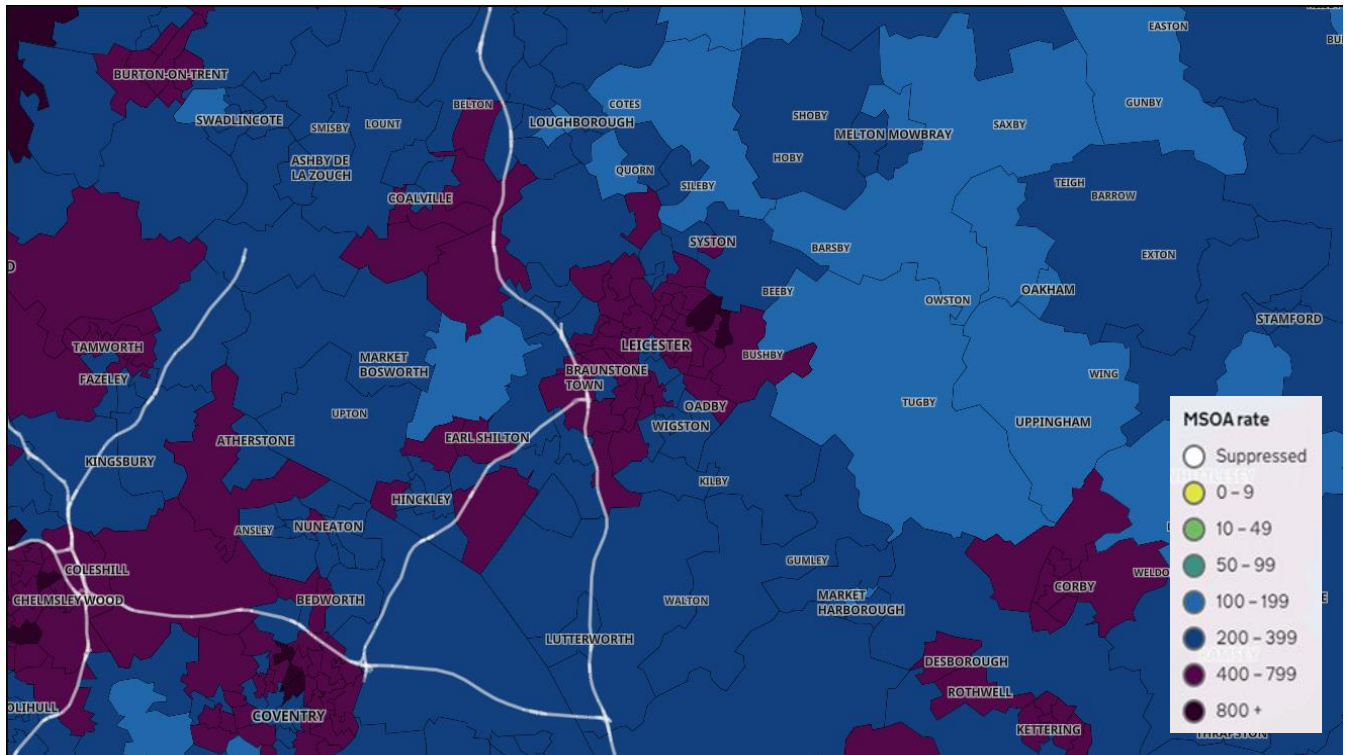
### 3. Trend in Weekly Incidence Rate (60+) – Leicestershire Districts

- The data for the 60+ population shows the rate for Leicestershire is 273.5 per 100,000 population, lower than the national rate of 343.4 per 100,000 population. Blaby has the highest rate in the county (391.2 per 100,000 population) followed by NWL (330.2), H&B (272.4), Melton (268.9), Charnwood (251.9), Harborough (196.5) and Melton (172.8). Compared to the previous week, most districts (apart from Blaby, H&B and Melton) have decreased like nationally.



Source: PHE Power BI Line Lists

#### 4. Weekly Cases by Middle Super Output Area (MSOA)



Source: PHE Coronavirus (COVID-19) in the UK Dashboard

If you require information contained in this leaflet in another version e.g. large print, Braille, tape or alternative language please telephone: 0116 305 6803, Fax: 0116 305 7271 or Minicom: 0116 305 6160.

ਐ ਆਪ ਆ ਮਾਫਿਰੀ ਆਪਨੀ ਆਧਾਮਾਂ ਸਮਝਵਾਮਾਂ ਥੀਰੀ ਮਦਦ  
ਓਞਞਾਂ ਡੀ ਨੀ 0116 305 6803 ਨੰਬਰ ਪਰ ਫ਼ੋਨ ਡਰਞੀ ਅਨੇ  
ਅਮੇ ਆਪਨੇ ਮਦਦ ਡਰਵਾ ਅਵਞਞਾ ਡਰੀਞੁੰ.

ਜੇਕਰ ਤੁਹਾਨੂੰ ਇਸ ਜਾਣਕਾਰੀ ਨੂੰ ਸਮਝਣ ਵਿੱਚ ਕੁਝ ਮਦਦ ਚਾਹੀਦੀ  
ਹੈ ਤਾਂ ਕਿਰਪਾ ਕਰਕੇ 0116 305 6803 ਨੰਬਰ ਤੇ ਫੋਨ ਕਰੋ ਅਤੇ  
ਅਸੀਂ ਤੁਹਾਡੀ ਮਦਦ ਲਈ ਕਿਸੇ ਦਾ ਪ੍ਰਬੰਧ ਕਰ ਦਵਾਂਗੇ।

এই তথ্য নিজের ভাষায় বুঝার জন্য আপনার যদি কোন  
সাহায্যের প্রয়োজন হয়, তবে 0116 305 6803 এই নম্বরে  
ফোন করলে আমরা উপযুক্ত ব্যক্তির ব্যবস্থা করবো।

اگر آپ کو یہ معلومات سمجھنے میں کچھ مدد درکار ہے تو براہ مہربانی اس نمبر پر کال کریں  
0116 305 6803 اور ہم آپ کی مدد کے لئے کسی کا انتظام کر دیں گے۔

假如閣下需要幫助，用你的語言去明白這些資訊，  
請致電 0116 305 6803，我們會安排有關人員為你  
提供幫助。

Jeżeli potrzebujesz pomocy w zrozumieniu tej informacji  
w Twoim języku, zadzwoń pod numer 0116 305 6803,  
a my Ci pomożemy.

**18<sup>th</sup> January 2021**

Strategic Business Intelligence Team  
Business Intelligence  
Chief Executive's Department  
Leicestershire County Council  
County Hall, Glenfield  
Leicester LE3 8RA

Tel: 0116 305 6059  
Email: [kajal.lad@leics.gov.uk](mailto:kajal.lad@leics.gov.uk)

Produced by the Strategic Business Intelligence Team at Leicestershire County Council.

Whilst every effort has been made to ensure the accuracy of the information contained within this report, Leicestershire County Council cannot be held responsible for any errors or omission relating to the data contained within the report.