

# COVID-19: Data Update for Leicestershire

Week 52

5<sup>th</sup> January 2021

Strategic Business Intelligence Team  
Business Intelligence  
Chief Executive's Department  
Leicestershire County Council  
County Hall, Glenfield  
Leicester LE3 8RA

Tel 0116 305 4266  
Email: [natalie.davison@leics.gov.uk](mailto:natalie.davison@leics.gov.uk)

Produced by the Strategic Business Intelligence Team at Leicestershire County Council.

Whilst every effort has been made to ensure the accuracy of the information contained within this report, Leicestershire County Council cannot be held responsible for any errors or omission relating to the data contained within the report.

# What have we learnt from the newly released Covid-19 data?

A series of publicly available dashboards examining Covid-19 cases, deaths involving Covid-19 and a district summary are available at the below links. A summary narrative to support the data in these dashboards then follows.

- [Deaths involving Covid-19](#)
- [Covid-19 Summary at District Level](#)
- [PHE Weekly Covid-19 Cases](#)

## 1. 36 deaths<sup>1</sup> involving Covid-19 were recorded in Leicestershire in the last week

- As of week 52 2020 (up to 25<sup>th</sup> December), there have been a total of 875 deaths in Leicestershire. The number of weekly counts of deaths has decreased from 40 deaths in week 51 to 36 deaths in week 52.
- Of all deaths involving Covid-19 in Leicestershire, 555 (63.4%) were in hospital and 255 (29.1%) were in a care home.
- In week 52 in Leicestershire, there were 28 deaths in hospital, seven deaths in a care home and one death in 'other settings'.

**Deaths (numbers) by local authority and place of death, for deaths that occurred up to 25<sup>th</sup> December but were registered up to 2<sup>nd</sup> January.**

	Care Home		Elsewhere		Home		Hospice		Hospital		Total				Population
	Count	Rate	Count	Rate	Count	Rate	Count	Rate	Count	Rate	Count	Rate	LCI	UCI	
Blaby	29	28.9	1	1.0	8	8.0	1	1.0	87	86.6	126	125.5	104.5	149.4	100421
Charnwood	54	29.6	1	0.5	12	6.6	5	2.7	126	69.0	198	108.4	93.8	124.6	182643
Harborough	41	44.3	0	0.0	5	5.4	1	1.1	55	59.5	102	110.3	89.9	133.9	92499
H&B	42	37.4	0	0.0	7	6.2	5	4.4	90	80.1	144	128.1	108.0	150.8	112423
Melton	37	72.4	1	2.0	4	7.8	1	2.0	34	66.5	77	150.7	118.9	188.3	51100
NWLeics	23	22.5	1	1.0	7	6.9	2	2.0	87	85.2	120	117.5	97.4	140.5	102126
O&W	29	50.8	2	3.5	1	1.8	0	0.0	76	133.2	108	189.3	155.3	228.5	57056
Leicestershire	255	36.5	6	0.9	44	6.3	15	2.1	555	79.5	875	125.3	117.1	133.9	698268
Rutland	13	32.7	0	0.0	3	7.6	2	5.0	16	40.3	34	85.6	59.3	119.7	39697
Leicester City	90	25.3	16	4.5	34	9.6	2	0.6	334	94.0	476	134.0	122.2	146.6	355218
LLR	358	32.7	22	2.0	81	7.4	19	1.7	905	82.8	1385	126.7	120.1	133.5	1093183

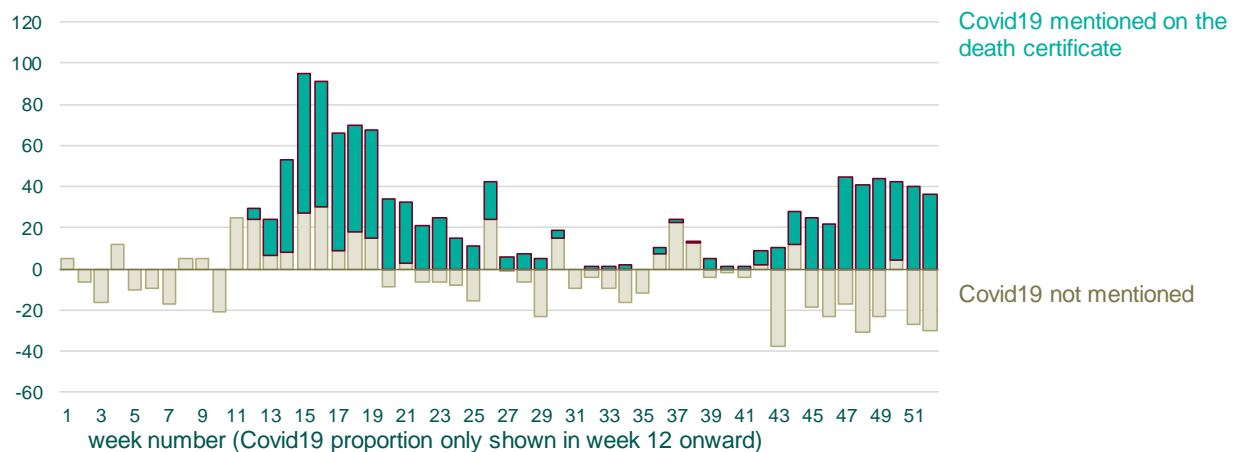
<sup>1</sup> Death counts are based on death occurrences. The death is counted as involving Covid-19 if Covid-19 was mentioned on the death certificate. Please note, Covid-19 may not have been confirmed by a test. Source: [Office for National Statistics](#) (2019)

## 2. Five excess deaths were recorded in the last week in Leicestershire

- Counts of excess deaths in Leicestershire have fluctuated over the previous ten weeks. There has been a decrease in all deaths seen in week 52. The latest figures from ONS show that 141 deaths occurred in Leicestershire in week 52 of 2020. There were five excess deaths reported in the last week.
- The latest weeks data shows that there were 36 deaths that mentioned Covid-19 on the death certificate in week 52.

Weekly provisional figures on deaths occurring, minus the weekly average (2015 to 2019) plus death counts where coronavirus (COVID-19) was mentioned on the death certificate

Leicestershire



Covid-19 - Weekly occurrences

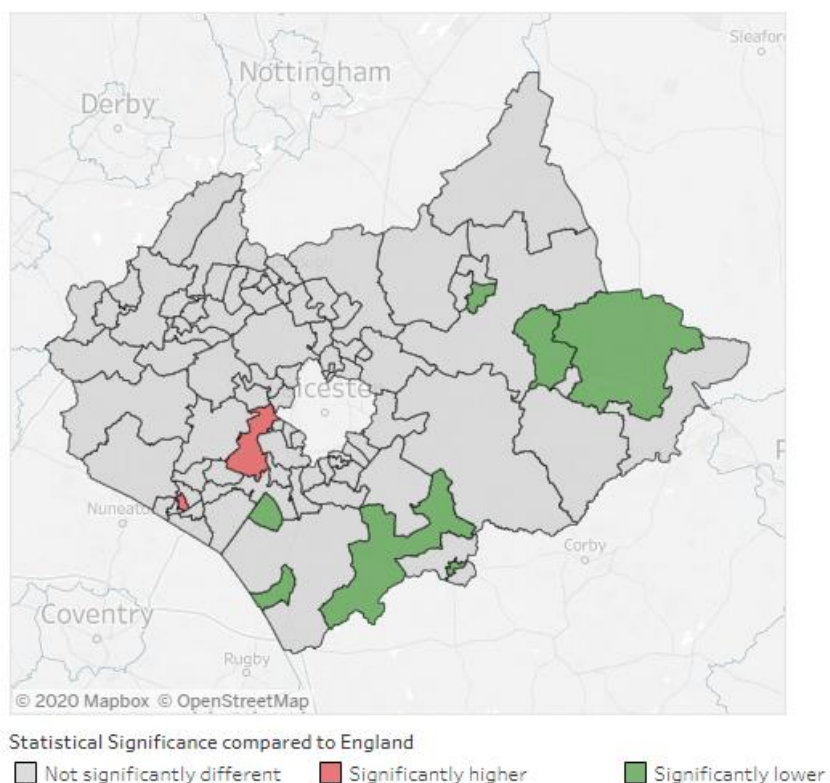
Based on a chart by David Spiegelhalter

<https://www.ons.gov.uk/peoplepopulationandcommunity/birthsdeathsandmarriages/deaths/datasets/weeklyprovisionalfiguresondeathsregisteredinenglandandwales>

### 3. One area in Blaby and one area in Hinckley and Bosworth has a significantly higher percentage of deaths involving Covid-19 than the national percentage

- The map below examines the statistical significance compared to England, of the percentage of deaths involving Covid-19 by Middle Layer Super Output Area (MSOA) in Leicestershire and Rutland. These deaths occurred between 1<sup>st</sup> March and 30<sup>th</sup> November 2020 and were registered by 15<sup>th</sup> December 2020.
- Kirby Muxloe and Thurlaston in Blaby recorded 23 deaths involving Covid-19 in this time period, this represented 27.7% of all deaths. Hinckley Central in Hinckley and Bosworth recorded 22 deaths involving Covid-19 which represented 22.0% of all deaths.
- Nationally, deaths involving Covid-19 made up under a fifth (13.7%) of all deaths.
- Seven MSOAs in Leicestershire and Rutland have a significantly lower percentage of deaths involving Covid-19 compared to England. These are:
  - Fleckney, Kilworth & Foxton in Harborough (5, 6.2%)
  - Melton Mowbray South in Melton (3, 4.8%)
  - Oakham West, Langham & Whissendine in Rutland (3, 4.8%)
  - Market Harborough Central in Harborough (3, 4.5%)
  - Lutterworth in Harborough (4, 4.3%)
  - Broughton Astley in Rutland (2, 3.4%)
  - Market Overton, Cottesmore & Empingham in Rutland (0, 0.0%)
- Further data examining deaths involving Covid-19 by local area is available in the dashboard available at [this link](#).

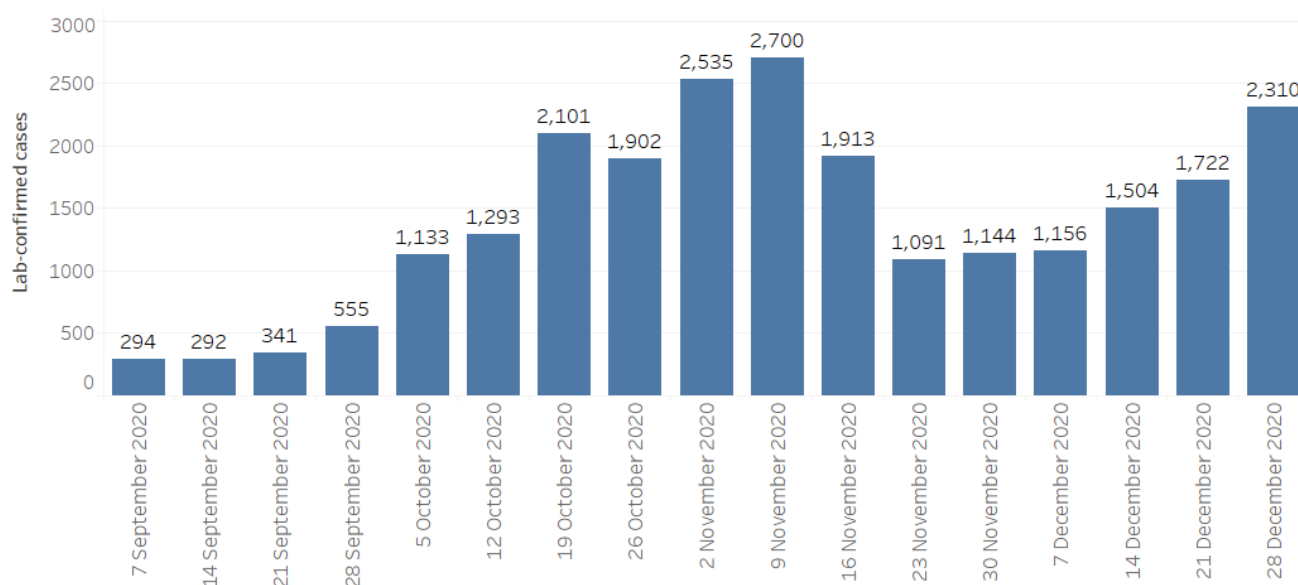
**Statistical Significance compared to England of the deaths involving Covid-19 by Middle Layer Super Output Area, Leicestershire and Rutland, deaths occurring between 1<sup>st</sup> March 2020 and 30<sup>th</sup> November 2020.**



## 4. Weekly counts of cases have increased in the past week in Leicestershire

NOTE: On 16<sup>th</sup> November 2020, Public Health England updated the way it records the location of people who test positive or negative for Covid-19. It now prioritises addresses given at the point of testing over the details registered on a patient's NHS Summary Care Record. This better reflects the distribution of cases and testing. However, it may give rise to differences in previously reported numbers of cases and rates in some areas. The change has been retrospectively applied to tests carried out from 1<sup>st</sup> September 2020, and data reports were updated to reflect this change on 16<sup>th</sup> November 2020.

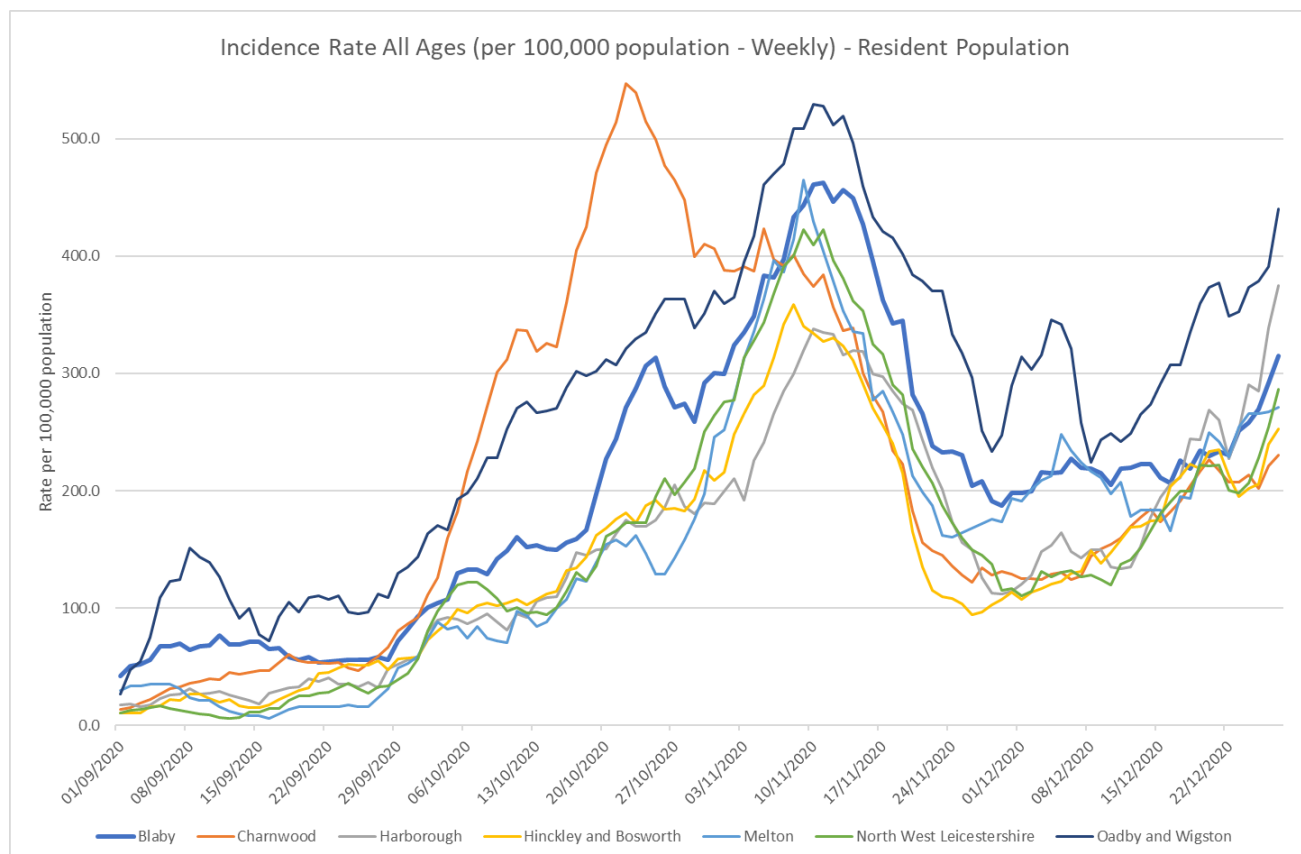
- As of 3<sup>rd</sup> January, Leicestershire has recorded a total of 27,808 lab-confirmed cases of Covid-19. This data relates to pillar 1 and 2 cases.
- An increase in the counts of cases had been witnessed throughout September and October, the counts of cases peaked around the 9<sup>th</sup> of November. For the two weeks following this peak, the counts of cases decreased. Since then, the weekly counts of cases have increased each week.
- The latest weekly data shows 2,310 cases have been confirmed in Leicestershire in the last week. This count has increased compared to the previous week where 1,722 cases were confirmed.



## 5. Oadby and Wigston have the highest weekly incidence rate of Covid-19 cases for people of all ages in the county

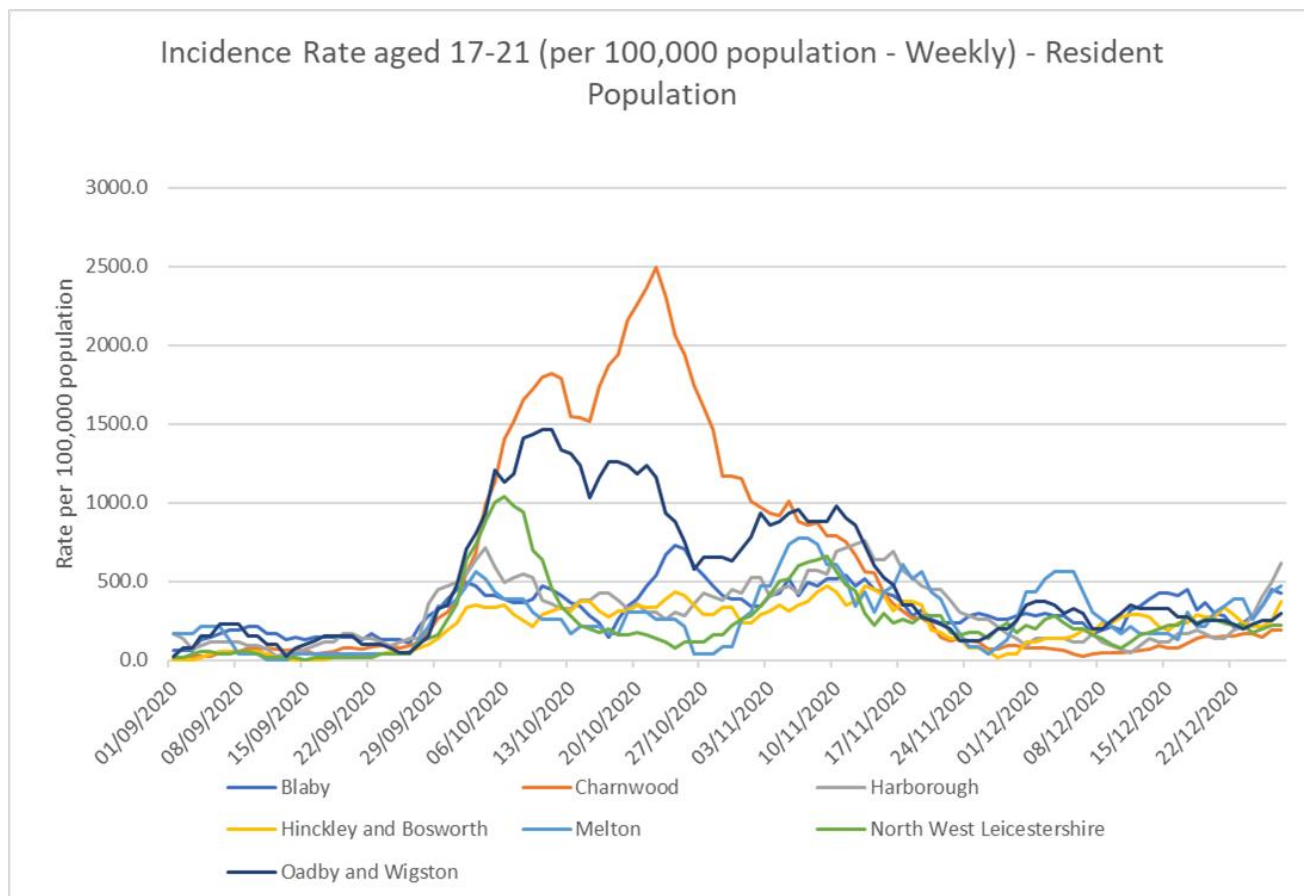
NOTE: On 16<sup>th</sup> November 2020, Public Health England updated the way it records the location of people who test positive or negative for Covid-19. It now prioritises addresses given at the point of testing over the details registered on a patient's NHS Summary Care Record. This better reflects the distribution of cases and testing. However, it may give rise to differences in previously reported numbers of cases and rates in some areas. The change has been retrospectively applied to tests carried out from 1<sup>st</sup> September 2020, and data reports were updated to reflect this change on 16<sup>th</sup> November 2020.

- The incidence rate for Covid-19 cases in Leicestershire had continued to increase since mid-September and peaked around the 9<sup>th</sup> of November. Since then, the incidence rate in Leicestershire had shown a declining trend for people of all ages. Throughout December the incidence rate in Leicestershire has fluctuated. The incidence rate in Leicestershire is lower (293.6 per 100,000 population) than the national rate (518.5 per 100,000 population) as of 27<sup>th</sup> December.
- The latest weekly incidence rates of Covid-19 cases for people of all ages (as of 27<sup>th</sup> December) show that all area rates in Leicestershire are lower than the national rate (518.5 per 100,000 population):
  - Oadby and Wigston; 440.2 per 100,000 population (251 cases)
  - Harborough; 375.2 per 100,000 (352 cases)
  - Blaby; 315.2 per 100,000 (320 cases)
  - North West Leicestershire; 286.6 per 100,000 (297 cases)
  - Melton; 271.4 per 100,000 (139 cases)
  - Hinckley and Bosworth; 252.8 per 100,000 (286 cases)
  - Charnwood; 230.3 per 100,000 (428 cases)
- Rutland has a lower incidence rate of Covid-19 cases (220.4 per 100,000) than England for people of all ages. This equates to 88 cases.



## 6. Harborough has the highest weekly incidence rate of Covid-19 cases for people aged 17-21 in the county

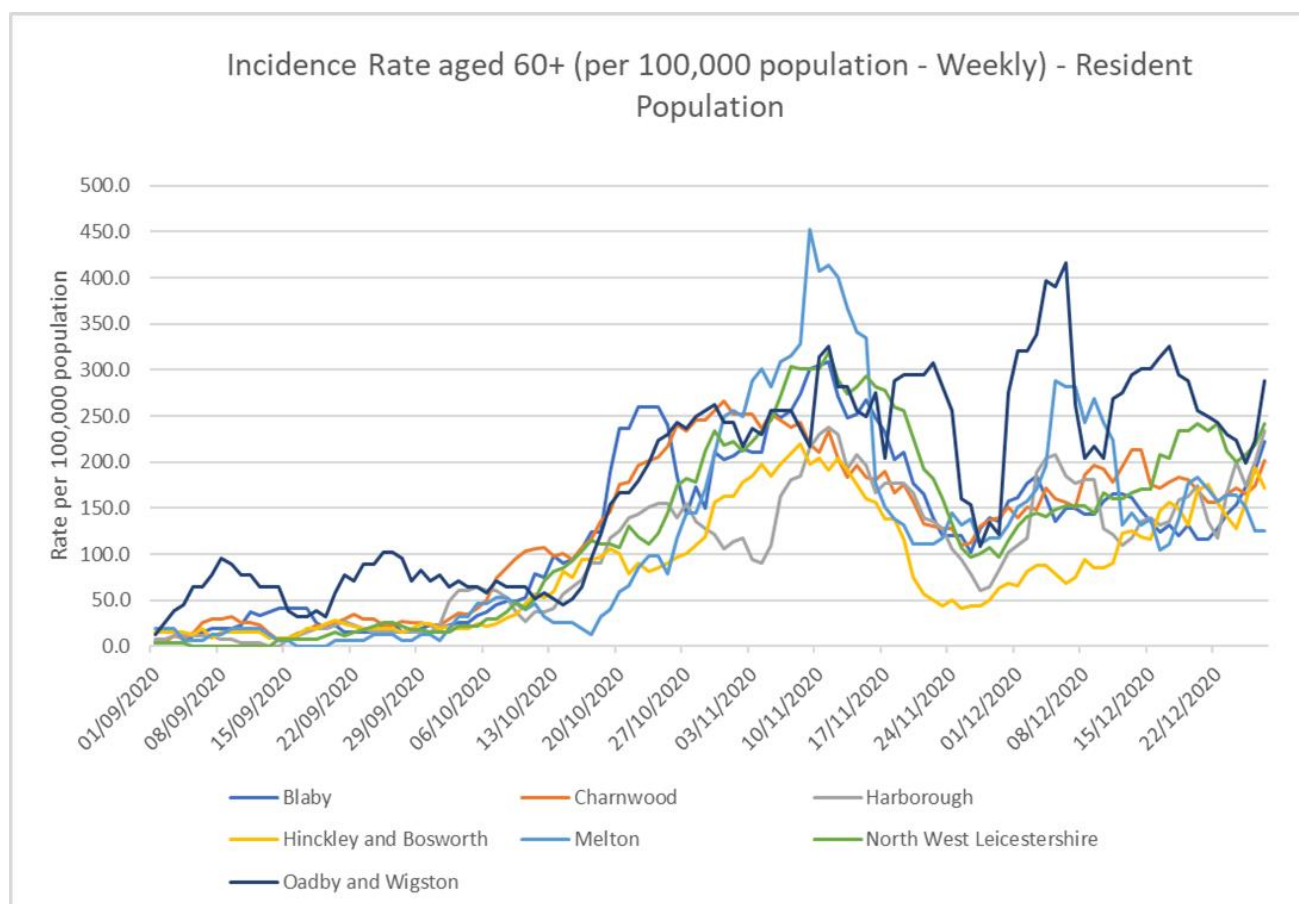
- The incidence rate for Covid-19 cases in people aged 17-21 in Leicestershire had been increasing since mid-September and peaked around the 22<sup>nd</sup> October. Since then, the incidence rate for Covid-19 cases in people aged 17-21 in Leicestershire has declined, with the exception of the first week of November and the last four weeks where the rate fluctuated.
- As of the 27<sup>th</sup> of December, the rate for Leicestershire (309.9 per 100,000 population) is lower than the national rate for this age group (601.3 per 100,000 population).
- Harborough has a higher incidence rate of Covid-19 cases (617.4 per 100,000) than the national rate (601.3 per 100,000 population) for people aged 17-21. This equates to 26 cases.
- The latest weekly incidence rates of Covid-19 cases for people aged 17-21 (as of 27<sup>th</sup> December) show that the following area rates in Leicestershire are lower than the national rate (601.3 per 100,000 population):
  - Melton; 476.0 per 100,000 (11 cases)
  - Blaby; 430.7 per 100,000 (20 cases)
  - Hinckley and Bosworth; 372.6 per 100,000 (19 cases)
  - Oadby and Wigston; 302.4 per 100,000 (12 cases)
  - North West Leicestershire; 220.3 per 100,000 (11 cases)
  - Charnwood; 189.9 per 100,000 (33 cases)
- Rutland has a lower incidence rate of Covid-19 cases (234.6 per 100,000) than England for people aged 17-21. This equates to 4 cases.





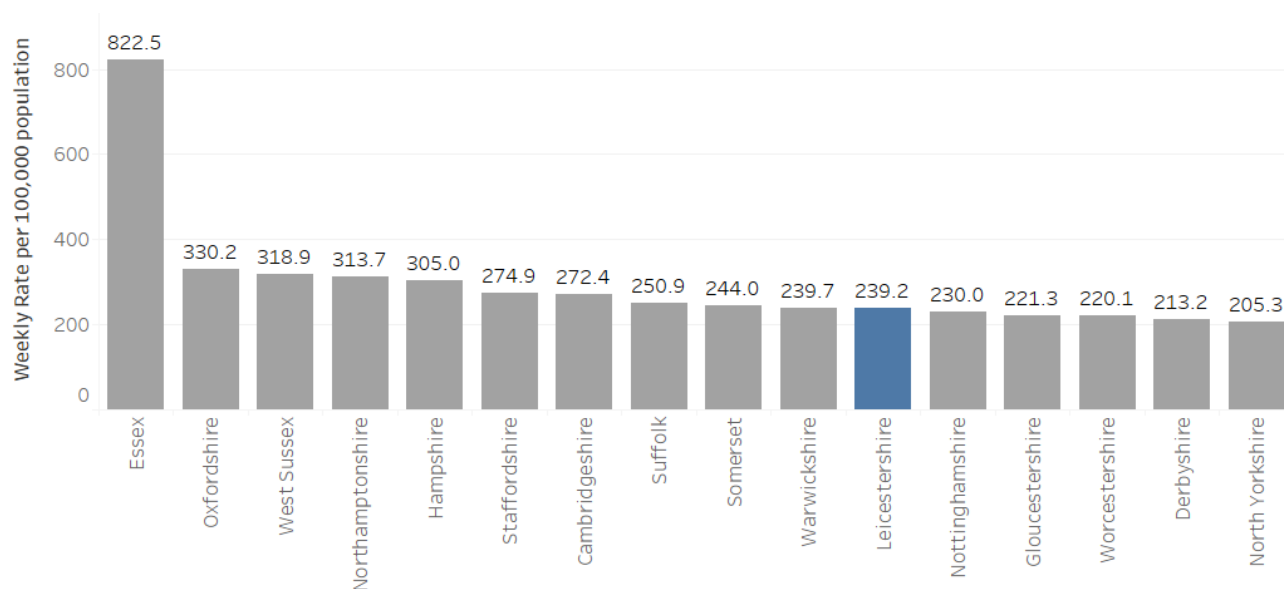
## 7. Oadby and Wigston has the highest weekly incidence rate of Covid-19 cases for people aged 60+ in the county

- The incidence rate for Covid-19 cases in people aged 60+ in Leicestershire had been increasing since the end of September and peaked around the 11<sup>th</sup> of November. Since then, the incidence rate for Covid-19 cases in people aged 60+ in Leicestershire has declined, with the exception of the first three weeks of December where the rate fluctuated and the last week where the rate increased. The rate for Leicestershire (210.7 per 100,000 population) is lower than the national rate (339.2 per 100,000 population) as of 27<sup>th</sup> December.
- The latest weekly incidence rates of Covid-19 cases for people aged 60+ (as of 27<sup>th</sup> December) show that all area rates in Leicestershire are lower than the national rate (339.2 per 100,000 population):
  - Oadby and Wigston; 287.9 per 100,000 (45 cases)
  - North West Leicestershire; 241.2 per 100,000 (65 cases)
  - Harborough; 234.3 per 100,000 (62 cases)
  - Blaby; 221.9 per 100,000 (59 cases)
  - Charnwood; 201.5 per 100,000 (88 cases)
  - Hinckley and Bosworth; 172.2 per 100,000 (55 cases)
  - Melton; 124.6 per 100,000 (19 cases)
- Rutland has a lower incidence rate of Covid-19 cases (157.2 per 100,000) than England for people aged 60+. This equates to 20 cases.



## 8. Leicestershire has the 6<sup>th</sup> lowest weekly rate of Covid-19 cases out of its CIPFA similar areas

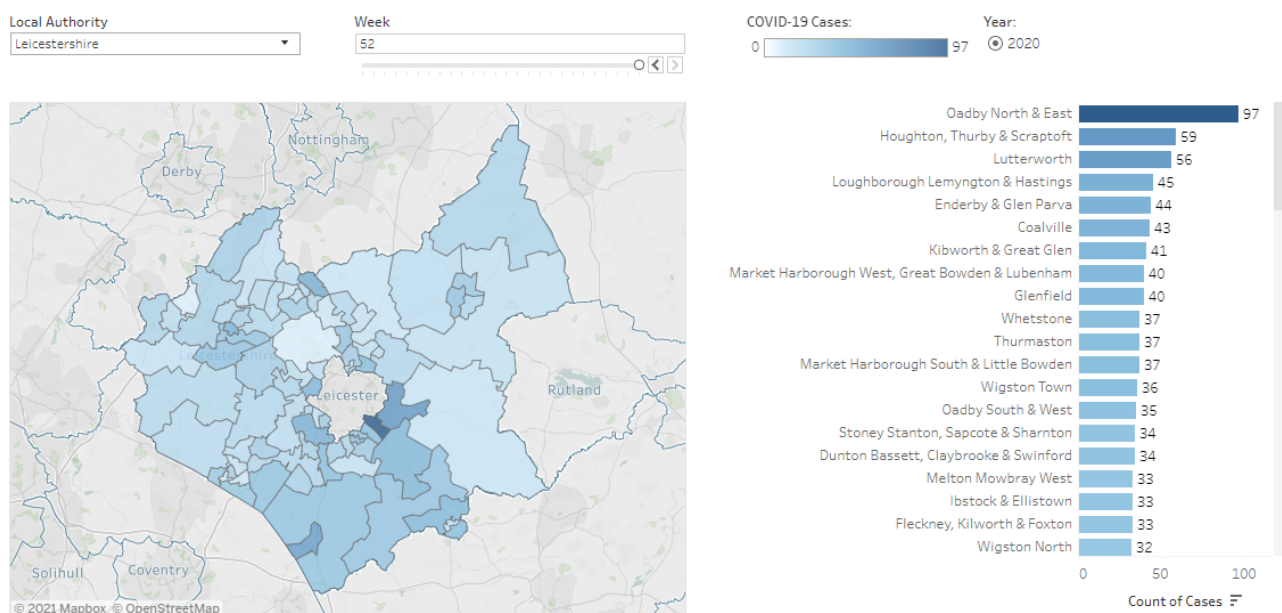
- There has been an increase in the weekly rate of Covid-19 cases in Leicestershire from 189.8 (per 100,000 population) in week 51 to 239.2 (per 100,000 population) in week 52.
- As of week 52 (21<sup>st</sup> December to 29<sup>th</sup> December), Leicestershire is ranked 95<sup>th</sup> (highest) out of 149 upper tier local authorities and ranked the 6<sup>th</sup> (lowest) out of its CIPFA similar areas.



## 9. The MSOA with the highest count of Covid-19 cases in the last week was Oadby North & East

- Between 21<sup>st</sup> December to 29<sup>th</sup> December (week 52), the Middle Super Output Area (MSOA) with the highest count of confirmed cases of Covid-19 was Oadby North & East with 97 reported cases. This was followed by:
  - Houghton, Thurby & Scraftoft (59)
  - Lutterworth (56)
  - Loughborough Lemyngton & Hastings (45)
  - Enderby & Glen Parva (44)
  - Coalville (43)
  - Kibworth & Great Glen (41)
  - Market Harborough West, Great Bowden & Lubenham (40), Glenfield (40)
  - Whetstone (37), Thurmaston (37), Market Harborough South & Little Bowden (37)
  - Wigston Town (36)
  - Oadby South & West (35)
  - Stoney Stanton, Sapcote & Sharnton (34), Dunton Bassett, Claybrooke & Swinford (34)
  - Melton Mowbray West (33), Ibstock & Ellistown (33), Fleckney, Kilworth & Foxton (33)
  - Wigston North (32), Hugglescote & Bardon Hill (32)
  - Mountsorrel & Rothley (31), Burbage Sketchley & Stretton (31)
  - Hinckley West (30)
- All other areas recorded less than 30 cases in the last week.
- Areas that recorded between zero and two cases in the last week have been suppressed due to data disclosure and are represented as white in the map below.

Weekly Counts of Lab-confirmed Covid-19 cases by Middle Layer Super Output Area, Leicester, Leicestershire and Rutland, from Week 27 to Week 52 of 2020



## 10. District Level Summary

- **Oadby & Wigston** continues to have the highest rate of Covid-19 cases and deaths in the county. The rate of cumulative cases is significantly higher in comparison to the England average.
- Since early September the weekly counts of cases had shown an increasing trend in Oadby and Wigston, with a peak around the 9<sup>th</sup> of November. Since then, the weekly counts of cases have fluctuated, with the exception of the last three weeks where the weekly counts of cases increased.
- The weekly counts of cases have increased from 213 in w/c 21<sup>st</sup> December to 277 in w/c 28<sup>th</sup> December.
- The latest weeks data on death occurrences shows five deaths involving Covid-19 were recorded in Oadby & Wigston in week 52; four deaths occurred in a hospital and one death occurred in 'other settings'.
- **Melton** has the third lowest rate of Covid-19 cases and the second highest rate of deaths in the county. The rate of cumulative cases is significantly lower than the England average.
- From mid-September, the weekly counts of cases had been increasing week on week in Melton, showing a peak around the 9<sup>th</sup> of November. Since then, the weekly counts of cases have fluctuated.
- The latest weekly counts of cases have decreased from 136 in w/c 21<sup>st</sup> December to 129 in w/c 28<sup>th</sup> December.
- The latest weekly count of deaths involving Covid-19 shows that seven deaths occurred in Melton in week 52; four deaths occurred in a hospital and three deaths occurred in a care home.
- **Hinckley & Bosworth** has the lowest rate of Covid-19 cases and third highest rate of deaths in the county. The rate of cumulative cases is significantly lower compared to the England average.
- Since mid-September, the weekly counts of cases had increased each week in Hinckley and Bosworth, showing a peak around the 9<sup>th</sup> of November. In the w/c 16<sup>th</sup> November and w/c 23<sup>rd</sup> November the weekly counts of cases decreased. Since then, the weekly counts of cases have shown an increasing trend.
- The latest weekly counts of cases have increased from 228 in w/c 21<sup>st</sup> December to 328 in w/c 28<sup>th</sup> December.
- The latest weeks data shows three deaths involving Covid-19 were recorded in Hinckley & Bosworth in week 52; all three deaths occurred in hospital.
- **Blaby** has the third highest rate of Covid-19 cases in the county and the fourth highest rate of deaths. The rate of cumulative cases is significantly higher in comparison to the England average.
- From mid-September, the weekly counts of cases in Blaby had shown an increasing trend, with a peak around the 9<sup>th</sup> of November. Since then, the weekly counts of cases have fluctuated, with the exception of the last three weeks where the weekly counts of cases increased each week.
- The latest weekly counts of cases have increased from 262 in w/c 21<sup>st</sup> December to 350 in w/c 28<sup>th</sup> December.
- The latest weeks data shows one death involving Covid-19 was recorded in Blaby in week 52; this death occurred in a hospital.
- **North West Leicestershire** has the second lowest rate of Covid-19 cases and the third lowest rate of deaths in the county. The rate of cumulative cases is significantly lower than the England average.
- From early September an increasing trend in the weekly counts of cases had been witnessed in North West Leicestershire, showing a peak around the 9<sup>th</sup> of November. The weekly counts of

cases have since decreased each week, with the exception of the last three weeks where the weekly counts of cases have increased.

- The latest weekly count of cases has increased from 214 in w/c 21<sup>st</sup> December to 353 in w/c 28<sup>th</sup> December.
- The latest weekly count of deaths involving Covid-19 shows that 10 deaths occurred in North West Leicestershire in week 52; eight deaths occurred in a hospital and two deaths occurred in a care home.
- **Harborough** has the fourth highest rate of Covid-19 cases and the second lowest rate of deaths in the county. The rate of cumulative cases is significantly lower in comparison to the England average.
- From the beginning of September to the 9<sup>th</sup> November, the weekly counts of cases had shown an increasing trend in Harborough. Between the w/c 9<sup>th</sup> November and the w/c 7<sup>th</sup> December the weekly counts of cases decreased each week. Since then, the weekly counts of cases have shown an increasing trend in Harborough.
- The latest weekly counts of cases have increased from 272 in w/c 21<sup>st</sup> December to 367 in w/c 28<sup>th</sup> December.
- The latest weeks data shows four deaths involving Covid-19 were recorded in Harborough in week 52; three deaths occurred in a hospital and one death occurred in a care home.
- **Charnwood** has the second highest rate of Covid-19 cases and the lowest rate of deaths in the county. The rate of cumulative cases is significantly higher in comparison to the England average.
- The weekly counts of cases in Charnwood had increased each week from early September to mid-October, showing a peak around the 19<sup>th</sup> of October. Between the 19<sup>th</sup> of October and the 23<sup>rd</sup> November the weekly counts of cases fluctuated. Since then, the weekly counts of cases have increased each week in Charnwood.
- The latest weekly counts of cases have increased from 397 in w/c 21<sup>st</sup> December to 506 in w/c 28<sup>th</sup> December.
- The latest weeks data shows six deaths involving Covid-19 were recorded in Charnwood in week 52; five deaths occurred in a hospital and one death occurred in a care home.

If you require information contained in this leaflet in another version e.g. large print, Braille, tape or alternative language please telephone: 0116 305 6803, Fax: 0116 305 7271 or Minicom: 0116 305 6160.

જો આપ આ માહિતી આપની ભાષામાં સમજવામાં થોડી મદદ ઇચ્છતાં હો તો 0116 305 6803 નંબર પર ફોન કરશો અને અમે આપને મદદ કરવા યત્નશીલ રહીશું.

ਜੇਕਰ ਤੁਹਾਨੂੰ ਇਸ ਜਾਣਕਾਰੀ ਨੂੰ ਸਮਝਣ ਵਿਚ ਕੁਝ ਮਦਦ ਚਾਹੀਦੀ ਹੈ ਤਾਂ ਕਿਰਪਾ ਕਰਕੇ 0116 305 6803 ਨੰਬਰ ਤੇ ਫੋਨ ਕਰੋ ਅਤੇ ਅਸੀਂ ਤੁਹਾਡੀ ਮਦਦ ਲਈ ਕਿਸੇ ਦਾ ਪ੍ਰਬੰਧ ਕਰ ਦਵਾਂਗੇ।

এই তথ্য নিজের ভাষায় বুঝার জন্য আপনার যদি কোন সাহায্যের প্রয়োজন হয়, তবে 0116 305 6803 এই নম্বরে ফোন করলে আমরা উপযুক্ত ব্যক্তির ব্যবস্থা করবো।

اگر آپ کو یہ معلومات سمجھنے میں کچھ مدد درکار ہے تو براہ مہربانی اس نمبر پر کال کریں  
0116 305 6803 اور ہم آپ کی مدد کے لئے کسی کا انتظام کر دیں گے۔

假如閣下需要幫助，用你的語言去明白這些資訊，請致電 0116 305 6803，我們會安排有關人員為你提供幫助。

Jeżeli potrzebujesz pomocy w zrozumieniu tej informacji w Twoim języku, zadzwoń pod numer 0116 305 6803, a my Ci pomożemy.

Strategic Business Intelligence Team  
Strategy and Business Intelligence Branch

Chief Executive's Department  
Leicestershire County Council  
County Hall  
Glenfield  
Leicester  
LE3 8RA  
[ri@leics.gov.uk](mailto:ri@leics.gov.uk)  
[www.lsr-online.org](http://www.lsr-online.org)