

## COVID-19: Data Update for Leicestershire

Period 29 September 2021 to 5 October 2021

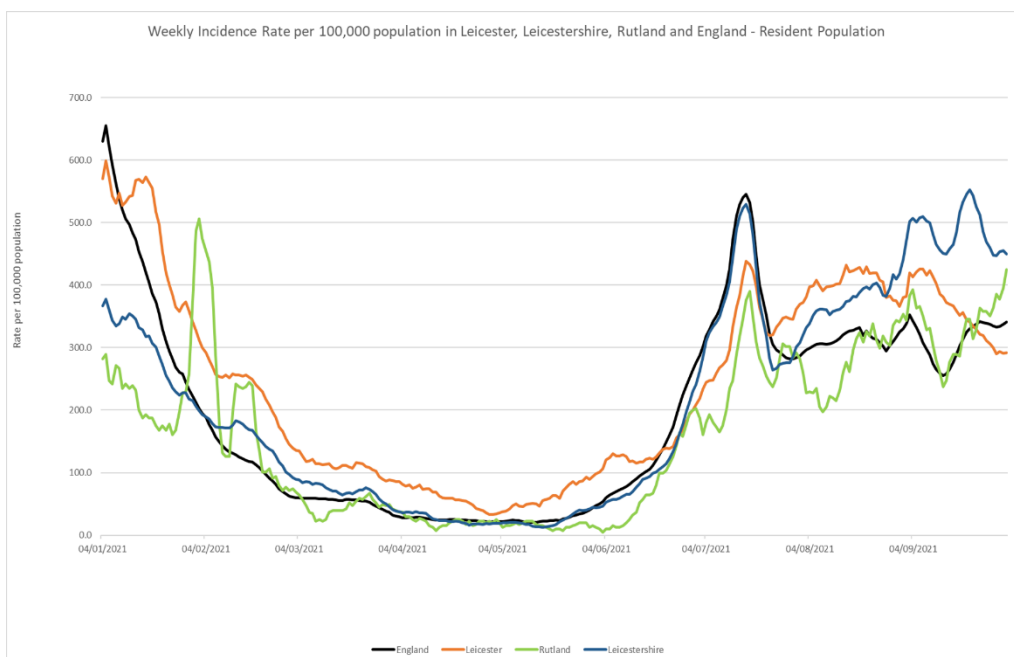
# Headline Summary

### 1. Position Statement from the Director of Public Health for Leicestershire

The overall rate in Leicestershire has decreased by 7% compared to the previous seven day period from 485.9 per 100,000 population to 450.0 per 100,000 population, with no district areas in the top 20 highest case rates in the country. Although Leicestershire overall has witnessed an improving trend, there is still some variability by district as some larger outbreaks occur in schools as well as a high undercurrent of school age cases.

### 2. Trend in Weekly Incidence Rate (All ages) – Leicester, Leicestershire, Rutland and England

- The national rate has increased from 337.0 (period 28<sup>th</sup> September to 4<sup>th</sup> October) to 341.3 per 100,000 population (period 29<sup>th</sup> September to 5<sup>th</sup> October). This latest rate reflects a percentage change of 0% compared to the previous 7 day period for England.
- The Leicestershire rate has decreased from 454.9 (period 28<sup>th</sup> September to 4<sup>th</sup> October) to 450.0 per 100,000 population (period 29<sup>th</sup> September to 5<sup>th</sup> October). This latest rate reflects a percentage change decrease of 7% compared to the previous 7 day period for Leicestershire. The rate in Leicestershire is higher than the national average.
- The rate for Leicester City stands at 292.1 per 100,000 population and is below the national average. The rate for Rutland stands at 424.9 per 100,000 population and is above the national average.

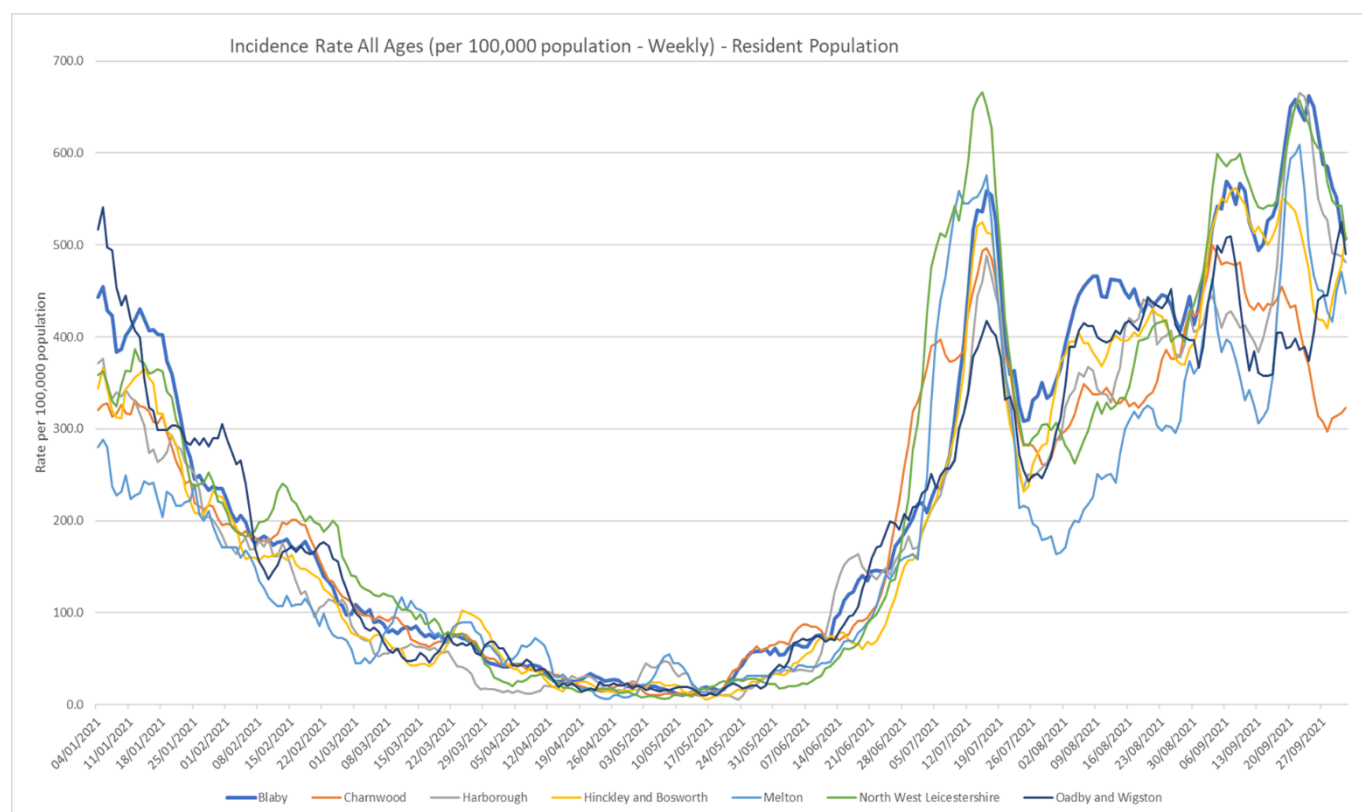


Source: PHE Power BI Line List

### 3. Trend in Weekly Incidence Rate (all ages) – Leicestershire Districts

- H&B has the highest rate in the county (512.0 per 100,000, 582 cases), followed by Blaby (507.1 per 100,000 population, 517 cases), NWL (505.7 per 100,000, 530 cases), O&W (490.3 per 100,000, 281 cases), Harborough (481.5 per 100,000, 460 cases), Melton (447.5 per 100,000, 230 cases) and Charnwood (323.2 per 100,000 population, 609 cases). Compared to the previous week, most districts (apart from H&B and O&W) have decreased unlike nationally.

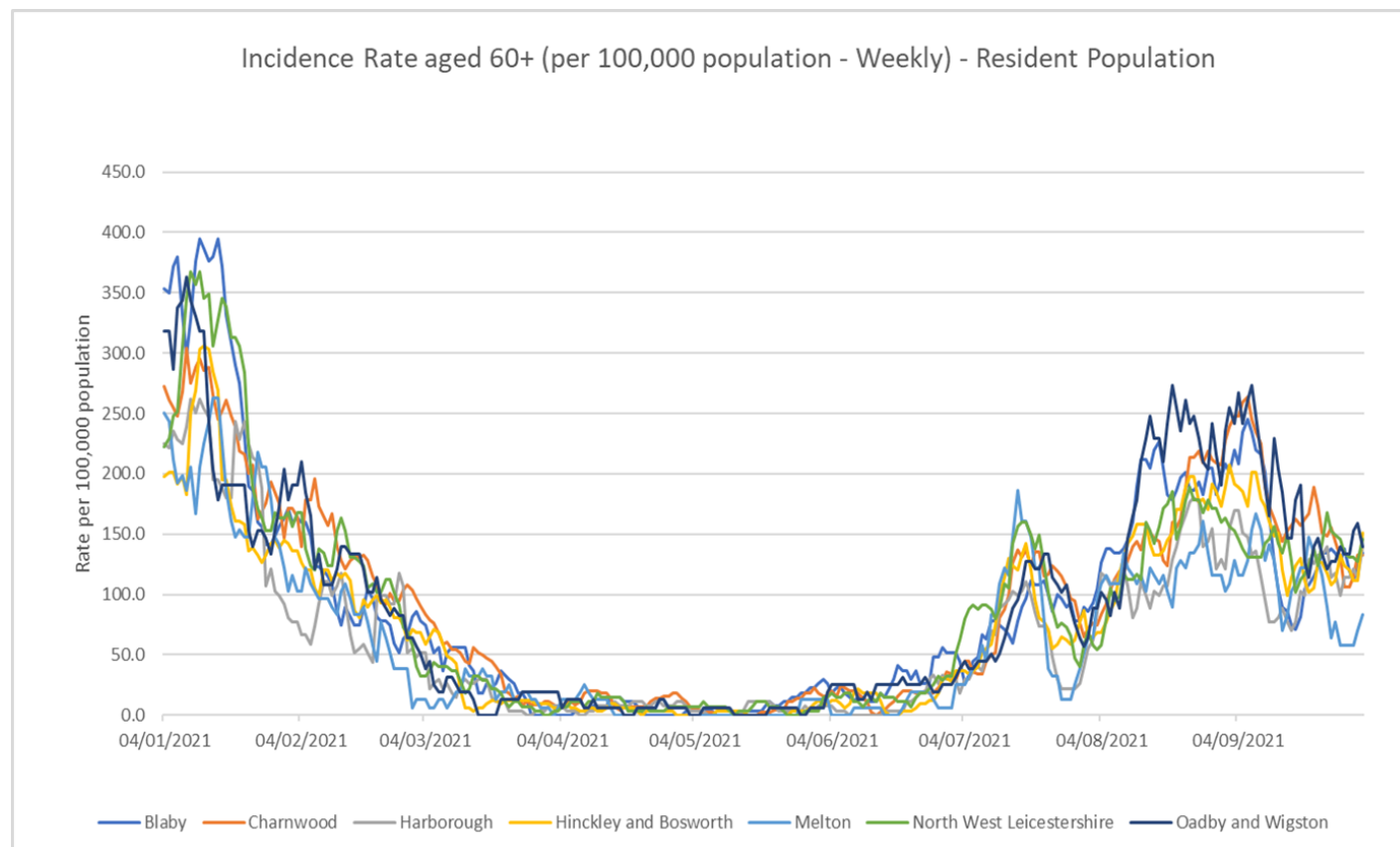
Indicator	Blaby	Charnwood	Harborough	Hinckley & Bosworth	Melton	NW Leicestershire	Oadby and Wigston	Leicestershire	Rutland	England
Weekly incidence rate per 100,000 population (All Ages)	507.1	323.2	481.5	512.0	447.5	505.7	490.3	450.0	424.9	341.3
Weekly count of cases (All Ages)	517	609	460	582	230	530	281	3209	172	193005
Percentage change in cases from previous 7 days (All Ages)	-22%	-4%	-19%	20%	-4%	-17%	21%	-7%	19%	0%
Weekly incidence rate per 100,000 population (60+)	134.0	132.9	140.0	151.5	83.4	145.6	139.9	135.6	84.5	134.6
Weekly count of cases (60+)	36	59	38	49	13	40	22	257	11	1526



Source: PHE Power BI Line Lists

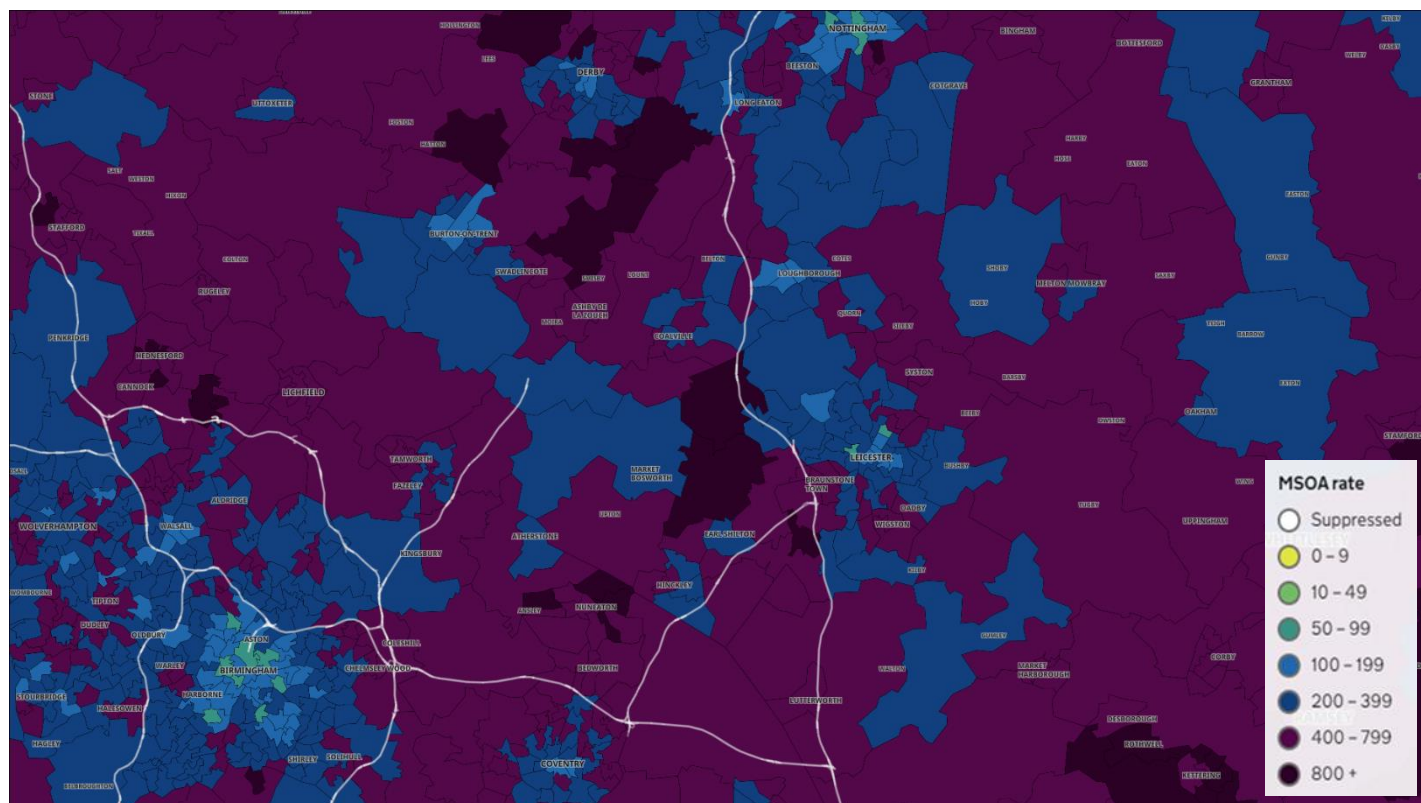
#### 4. Trend in Weekly Incidence Rate (60+) – Leicestershire Districts

- H&B has the highest rate in the county (151.5 per 100,000 population, 49 cases) followed by NWL (145.6, 40 cases), Harborough (140.0, 38 cases), O&W (139.9, 22 cases), Blaby (134.0, 36 cases), Charnwood (132.9, 59 cases) and Melton (83.4, 13 cases). Compared to the previous week, most districts (apart from Blaby, Charnwood and NWL) have increased like nationally.



Source: PHE Power BI Line Lists

## 5. Weekly Cases by Middle Super Output Area (MSOA)



Source: PHE Coronavirus (COVID-19) in the UK Dashboard

If you require information contained in this leaflet in another version e.g. large print, Braille, tape or alternative language please telephone: 0116 305 6803, Fax: 0116 305 7271 or Minicom: 0116 305 6160.

જો આપ આ માહિતી આપની ભાષામાં સમજવામાં થોડી મદદ ઇચ્છતાં હો તો 0116 305 6803 નંબર પર ફોન કરશો અને અમે આપને મદદ કરવા અવસ્થા કરીશું.

ਜੇਕਰ ਤੁਹਾਨੂੰ ਇਸ ਜਾਣਕਾਰੀ ਨੂੰ ਸਮਝਣ ਵਿਚ ਕੁਝ ਮਦਦ ਚਾਹੀਦੀ ਹੈ ਤਾਂ ਕਿਰਪਾ ਕਰਕੇ 0116 305 6803 ਨੰਬਰ ਤੇ ਫੋਨ ਕਰੋ ਅਤੇ ਅਸੀਂ ਤੁਹਾਡੀ ਮਦਦ ਲਈ ਕਿਸੇ ਦਾ ਪ੍ਰਬੰਧ ਕਰ ਦਵਾਂਗੇ।

এই তথ্য নিজের ভাষায় বুঝার জন্য আপনার যদি কোন সাহায্যের প্রয়োজন হয়, তবে 0116 305 6803 এই নম্বরে ফোন করলে আমরা উপযুক্ত ব্যক্তির ব্যবস্থা করবো।

اگر آپ کو یہ معلومات سمجھنے میں کچھ مدد درکار ہے تو براہ مہربانی اس نمبر پر کال کریں 0116 305 6803 اور ہم آپ کی مدد کے لئے کسی کا انتظام کر دیں گے۔

假如閣下需要幫助，用你的語言去明白這些資訊，請致電 0116 305 6803，我們會安排有關人員為你提供幫助。

Jeżeli potrzebujesz pomocy w zrozumieniu tej informacji w Twoim języku, zadzwoń pod numer 0116 305 6803, a my Ci pomożemy.

## 11 October 2021

Business Intelligence Service  
Chief Executive's Department  
Leicestershire County Council  
County Hall, Glenfield  
Leicester LE3 8RA

Tel 0116 305 6059  
Email: [Kajal.lad@leics.gov.uk](mailto:Kajal.lad@leics.gov.uk)

Produced by the Business Intelligence Service at Leicestershire County Council.

Whilst every effort has been made to ensure the accuracy of the information contained within this report, Leicestershire County Council cannot be held responsible for any errors or omission relating to the data contained within the report.