

COVID-19:

Data Update for Leicestershire

Week 39 of 2021

12th October 2021

Business Intelligence Service
Chief Executive's Department
Leicestershire County Council
County Hall, Glenfield
Leicester LE3 8RA

Tel 0116 305 6059
Email: kajal.lad@leics.gov.uk

Produced by the Business Intelligence Service at Leicestershire County Council.

Whilst every effort has been made to ensure the accuracy of the information contained within this report, Leicestershire County Council cannot be held responsible for any errors or omission relating to the data contained within the report.

What have we learnt from the newly released Covid-19 data?

A series of publicly available dashboards examining Covid-19 cases, deaths involving Covid-19 and a district summary are available at the below links. A summary narrative to support the data in these dashboards then follows.

- [Deaths involving Covid-19](#)
- [Covid-19 Summary at District Level](#)
- [PHE Weekly Covid-19 Cases](#)

1. Seven deaths¹ involving Covid-19 were recorded in Leicestershire in the last week

- As of week 39 2021 (up to 1st October), there has been a total of 1,653 deaths in Leicestershire. The weekly count of deaths has decreased from 11 deaths in week 38 of 2021 to seven deaths in week 39 of 2021.
- Of all deaths involving Covid-19 in Leicestershire, 1,106 (66.9%) were in hospital and 415 (25.1%) were in a care home.
- In week 39 in Leicestershire, there were four deaths in a hospital, one death in a care home and two deaths in an 'other' setting.

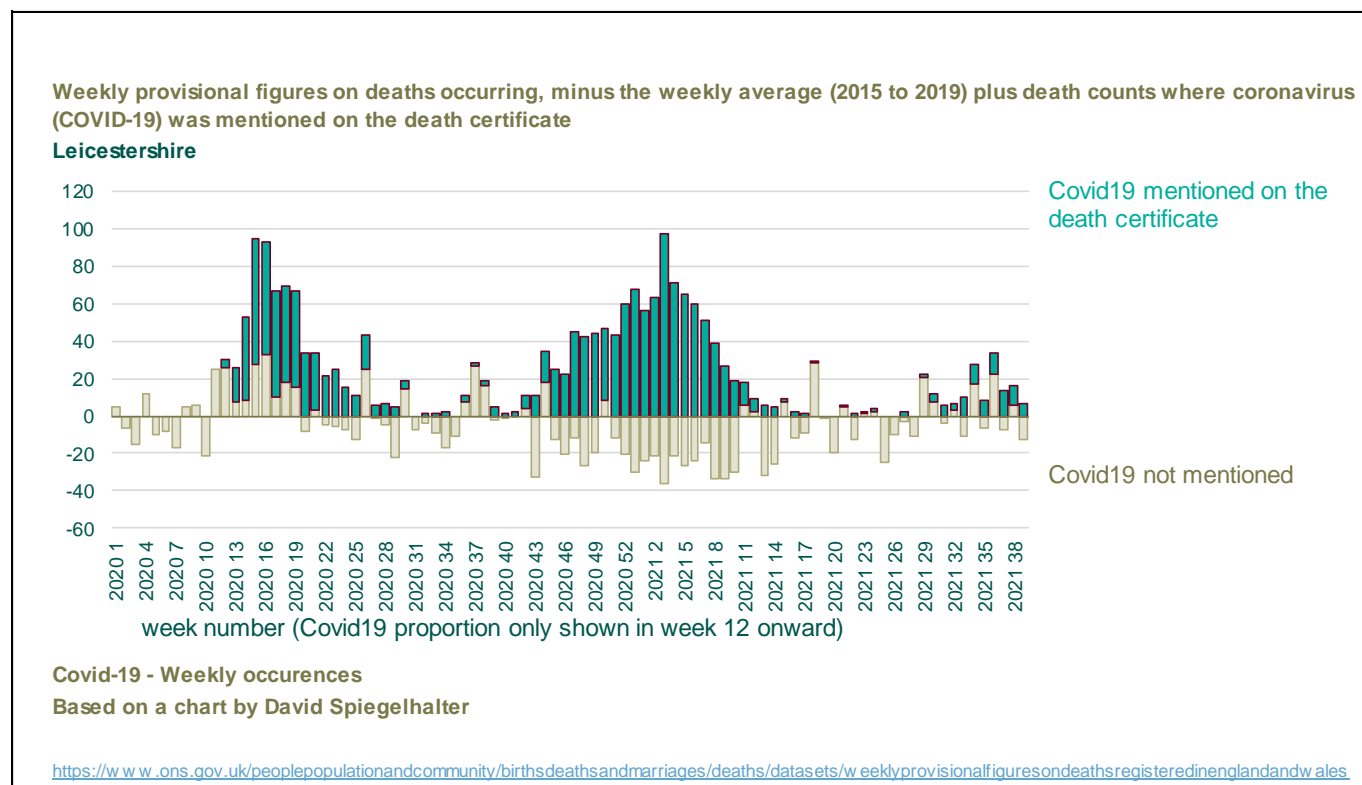
¹ Death counts are based on death occurrences. The death is counted as involving Covid-19 if Covid-19 was mentioned on the death certificate. Please note, Covid-19 may not have been confirmed by a test. Source: [Office for National Statistics](#) (2021)

Deaths (numbers) by local authority and place of death, for deaths that occurred up to 1st October but were registered up to 9th October.

	Care Home		Elsewhere		Home		Hospice		Hospital		Total				Population
	Count	Rate	Count	Rate	Count	Rate	Count	Rate	Count	Rate	Count	Rate	LCI	UCI	
Blaby	47	46.1	7	6.9	14	13.7	1	1.0	172	168.7	241	236.4	207.5	268.2	101,950
Charnwood	106	56.3	8	4.2	19	10.1	6	3.2	256	135.9	395	209.6	189.5	231.4	188,416
Harborough	55	57.6	2	2.1	12	12.6	2	2.1	116	121.4	187	195.7	168.7	225.9	95,537
H&B	65	57.2	0	0.0	13	11.4	5	4.4	174	153.1	257	226.1	199.3	255.5	113,666
Melton	44	85.6	1	1.9	7	13.6	1	1.9	70	136.2	123	239.3	198.9	285.6	51,394
NWLeics	50	47.7	2	1.9	17	16.2	6	5.7	178	169.8	253	241.4	212.6	273.0	104,809
O&W	48	83.8	2	3.5	7	12.2	0	0.0	140	244.3	197	343.7	297.4	395.2	57,313
Leicestershire	415	58.2	22	3.1	89	12.5	21	2.9	1106	155.1	1653	231.8	220.8	243.3	713085
Rutland	32	79.1	0	0.0	6	14.8	2	4.9	36	88.9	76	187.8	147.9	235.0	40476
Leicester City	147	41.5	26	7.3	77	21.7	2	0.6	704	198.8	956	270.0	253.2	287.7	354036
LLR	594	53.6	48	4.3	172	15.5	25	2.3	1846	166.7	2685	242.4	233.3	251.8	1107597

2. There were no excess deaths recorded in Leicestershire in the last week

- Counts of excess deaths in Leicestershire have fluctuated over the last 10 weeks. The number of all deaths seen has decreased from week 38 2021 to week 39 2021. The latest figures from ONS show that 108 deaths occurred in Leicestershire in week 39 of 2021. There were no excess deaths reported in the last week.
- The latest weeks data shows that there were seven deaths that mentioned Covid-19 on the death certificate in week 39.

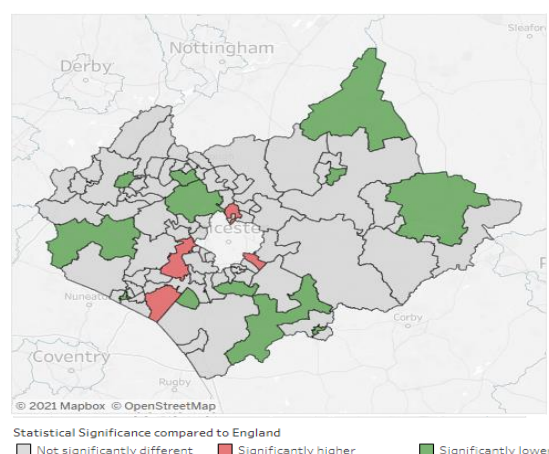


3. Two areas in Blaby, one area in Charnwood and one area in Oadby and Wigston has a significantly higher percentage of deaths involving Covid-19 than the national percentage

Note: There is no further update available for this data.

- The map below examines the statistical significance compared to England, of the percentage of deaths involving Covid-19 by Middle Layer Super Output Area (MSOA) in Leicestershire and Rutland. These deaths occurred between 1st March 2020 and 30th April 2021.
- Stoney Stanton, Sapcote & Sharnton in Blaby recorded 33 deaths involving Covid-19 in this time period, this represented 27.3% of all deaths. Kirby Muxloe and Thurlaston in Blaby recorded 31 deaths involving Covid-19 in this time period, this represented 26.7% of all deaths. Birstall Wanlip & Riverside in Charnwood recorded 30 deaths involving Covid-19 in this time period, this represented 24.6% of all deaths. Oadby North & East in Oadby and Wigston recorded 38 deaths involving Covid-19 which represented 23.6% of all deaths.
- Nationally, deaths involving Covid-19 made up under a fifth (17.1%) of all deaths.
- 12 MSOAs in Leicestershire and Rutland have a significantly lower percentage of deaths involving Covid-19 compared to England. These are:
 - Market Bosworth, Barlestone & Sheepy Magna in Hinckley and Bosworth (11, 10.0%)
 - Bottesford, Harby & Croxton Kerrial in Melton (12, 9.9%)
 - Loughborough – Outwoods in Charnwood (10, 9.6%)
 - Market Harborough Central in Harborough (10, 8.7%)
 - Broughton Astley in Harborough (8, 8.6%)
 - Thurgate, Woodhouse & Bradgate in Charnwood (8, 8.3%)
 - Market Overton, Cottesmore & Empingham in Rutland (6, 8.3%)
 - Countesthorpe & Kilby in Blaby (6, 8.3%)
 - Thringstone & Swannington in North West Leicestershire (7, 7.8%)
 - Hinckley Clarendon Park in Hinckley and Bosworth (5, 7.7%)
 - Melton Mowbray South in Melton (7, 7.2%)
 - Fleckney, Kilworth & Foxton in Harborough (7, 5.7%)
- Further data examining deaths involving Covid-19 by local area is available in the dashboard available at [this link](#).

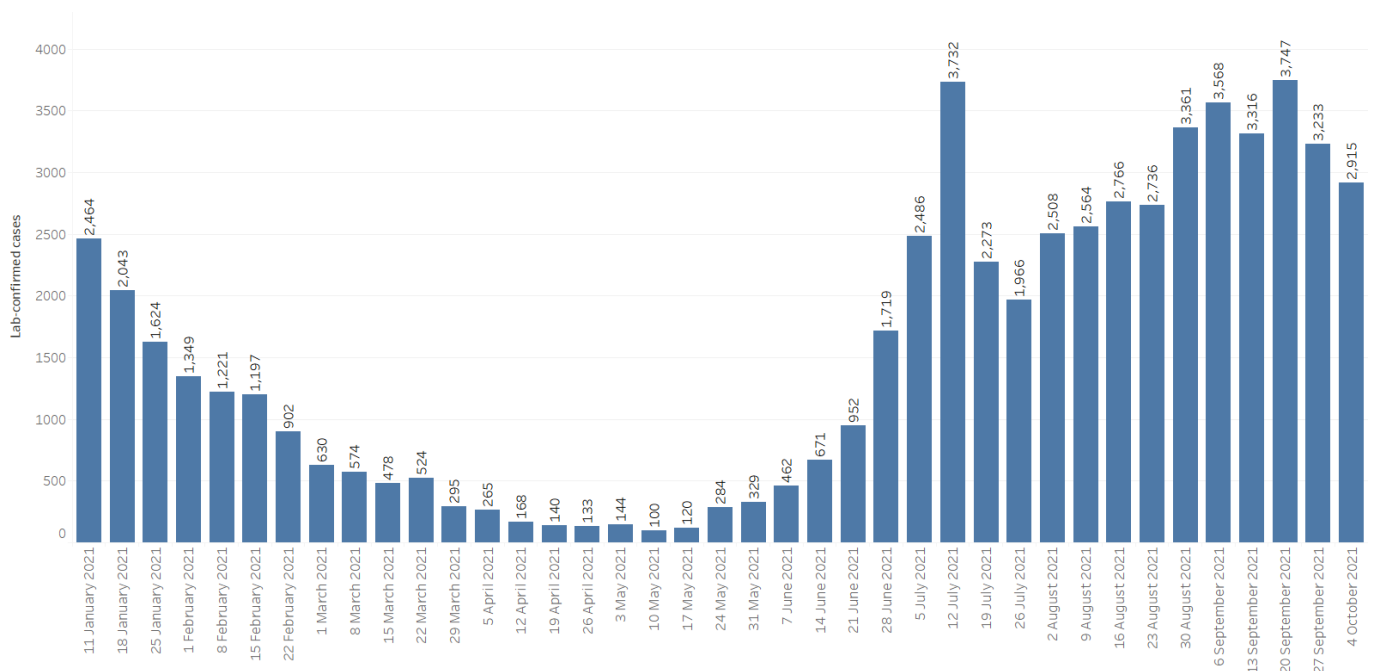
Statistical Significance compared to England of the deaths involving Covid-19 by Middle Layer Super Output Area, Leicestershire and Rutland, deaths occurring between 1st March 2020 and 30th April 2021.



4. Weekly counts of cases have decreased in the past week in Leicestershire

Note: Public Health England has updated the way cases are reported in England. Reported cases are sometimes removed if subsequent tests are negative. This happens when cases identified through a positive rapid lateral flow test are followed by polymerase chain reaction (PCR) tests within 3 days that are all negative. This means cases may be retroactively removed or changed and as such the data may fluctuate.

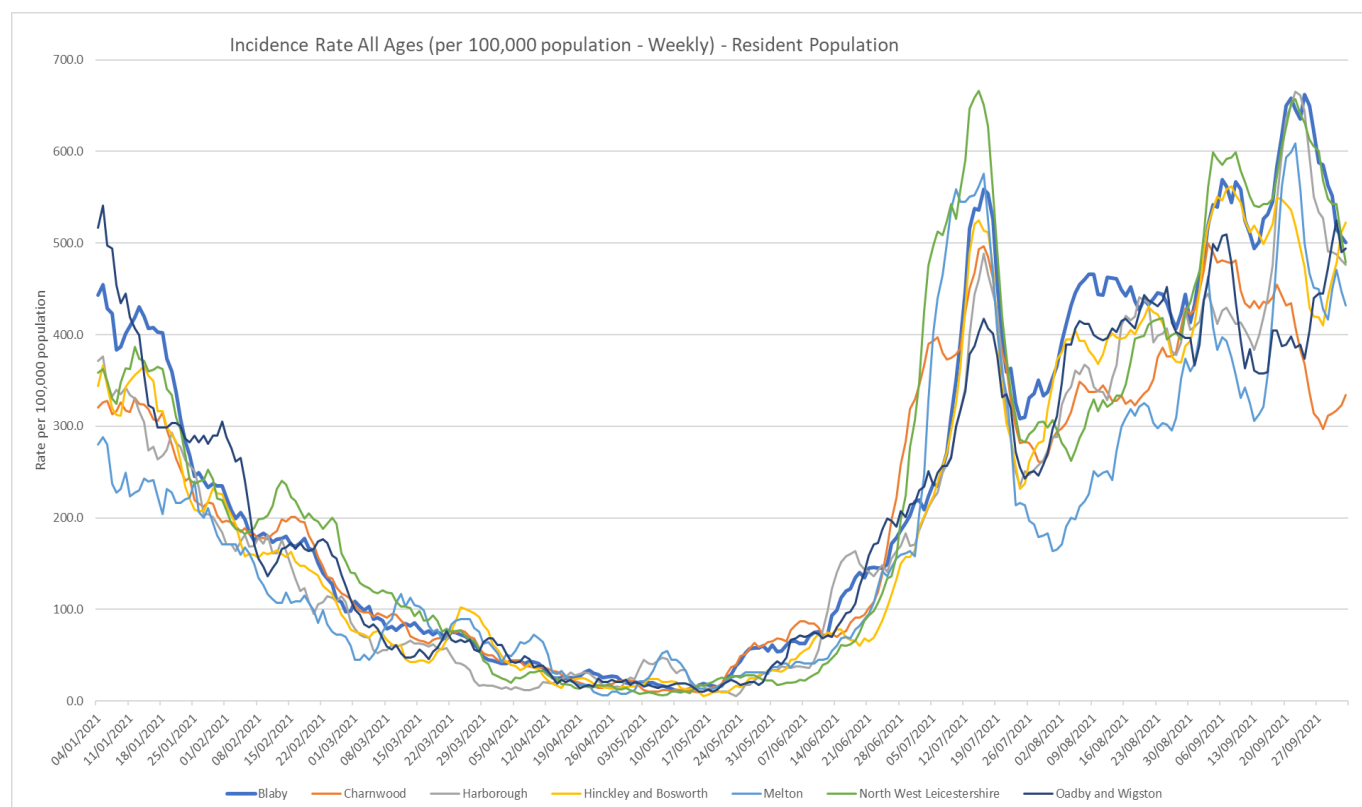
- As of 10th October, Leicestershire has recorded a total of 90,623 lab-confirmed cases of Covid-19. This data relates to pillar 1 and 2 cases.
- From January 11th to the beginning of May, cases had been decreasing. From then to mid July the cases increased before decreasing in w/c 19th July. Since then, the weekly counts of cases have shown an increasing trend, with the exception of the last two weeks where the weekly counts of cases decreased.
- The latest weekly data shows 2,915 cases have been confirmed in Leicestershire in the last week. This count has decreased compared to the previous week where 3,233 cases were confirmed.



5. Hinckley and Bosworth has the highest weekly incidence rate of Covid-19 cases for people of all ages in the county

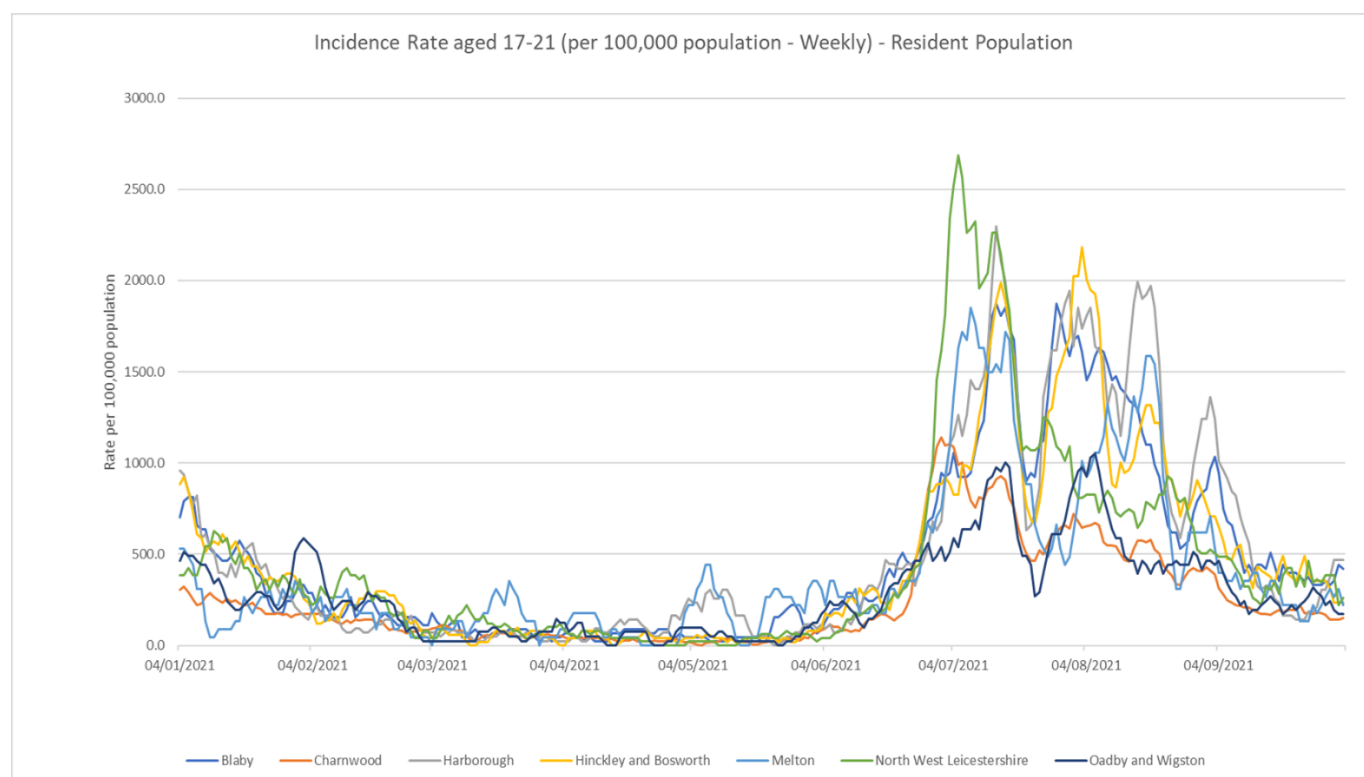
Note: Public Health England has updated the way cases are reported in England. Reported cases are sometimes removed if subsequent tests are negative. This happens when cases identified through a positive rapid lateral flow test are followed by polymerase chain reaction (PCR) tests within 3 days that are all negative. This means cases may be retroactively removed or changed and as such the data may fluctuate.

- The incidence rate for Covid-19 cases in Leicestershire had shown a declining trend between the beginning of January and the final week of April. The incidence rate in Leicestershire then fluctuated between the final week of April and the middle of May. Since then the incidence rate has shown an increasing trend, with the exception of the periods between the 16th and 25th of July, the 4th and 14th of September and the 21st September and 3rd of October where the incidence rate decreased. The incidence rate in Leicestershire (448.1 per 100,000 population) is higher than the national rate (347.8 per 100,000 population) as of 3rd October 2021.
- The latest weekly incidence rates of Covid-19 cases for people of all ages (as of 3rd October) show that the following area rates in Leicestershire are higher than the national rate (347.8 per 100,000 population):
 - Hinckley & Bosworth; 522.6 per 100,000 (594 cases)
 - Blaby; 500.2 per 100,000 (510 cases)
 - Oadby & Wigston; 493.8 per 100,000 (283 cases)
 - North West Leicestershire; 479.0 per 100,000 (502 cases)
 - Harborough; 476.3 per 100,000 (455 cases)
 - Melton; 432.0 per 100,000 (222 cases)
- The following area rates in Leicestershire are lower than the national rate (347.8 per 100,000 population):
 - Charnwood; 333.8 per 100,000 (629 cases)
- Rutland has a higher incidence rate of Covid-19 cases (449.6 per 100,000) than England for people of all ages. This equates to 182 cases.



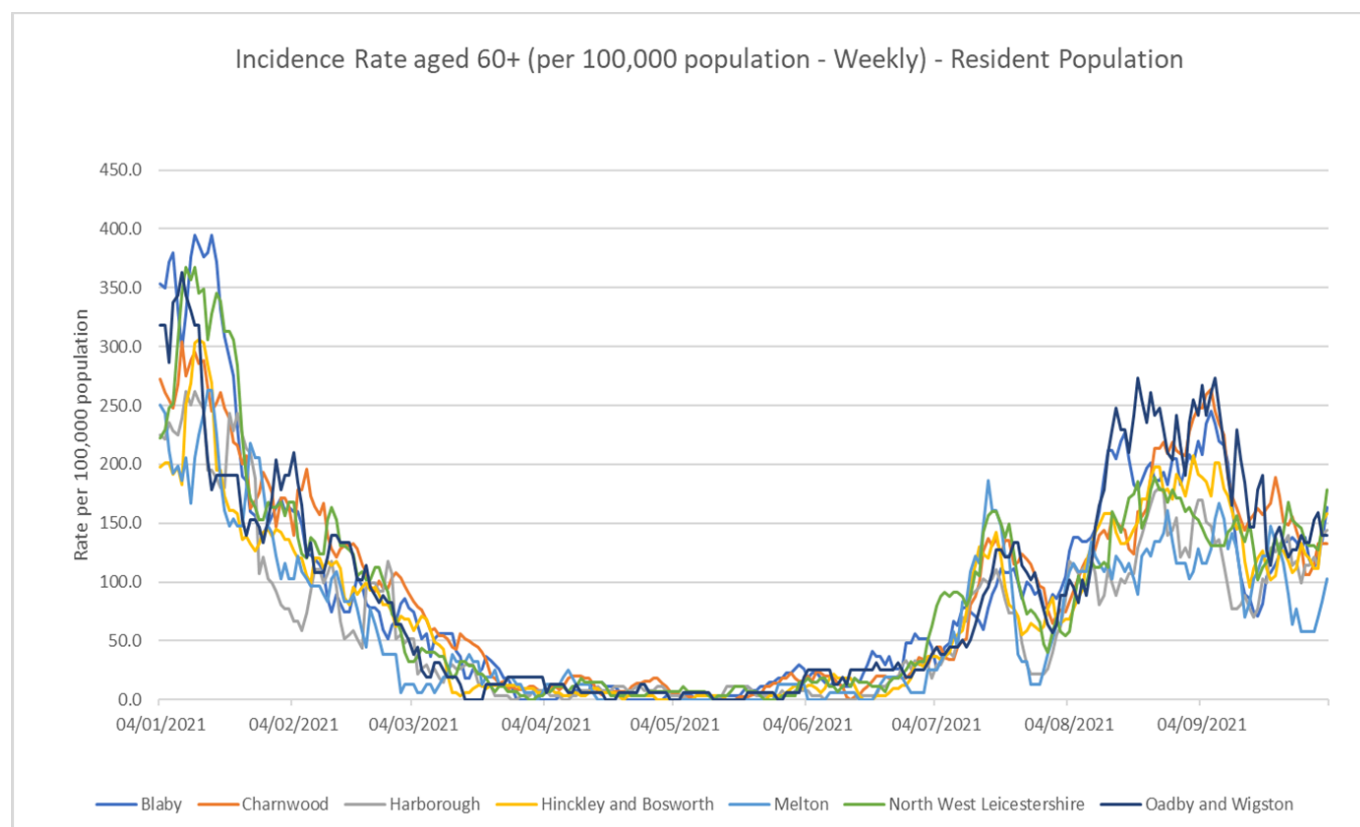
6. Harborough has the highest weekly incidence rate of Covid-19 cases for people aged 17-21 in the county

- Between the 5th of January and the 5th of April the weekly incidence rate of Covid-19 for people aged 17-21 had been declining. From the 5th of April to the end of May the rate fluctuated. Since then the weekly incidence rate of Covid-19 for people aged 17-21 in Leicestershire has shown an increasing trend, with the exception of the period between the 14th of July and the 23rd of July and the last eight weeks where the incidence rate declined.
- As of the 3rd of October, the rate for Leicestershire (239.2 per 100,000 population) is higher than the national rate for people aged 17-21 (222.3 per 100,000 population).
- The latest weekly incidence rates of Covid-19 cases for people aged 17-21 (as of 3rd October) show that the following area rates in Leicestershire are higher than the national rate (222.3 per 100,000 population):
 - Harborough; 468.9 per 100,000 (20 cases)
 - Blaby; 418.5 per 100,000 (19 cases)
 - North West Leicestershire; 262.6 per 100,000 (13 cases)
 - Hinckley & Bosworth; 236.0 per 100,000 (12 cases)
- The following area rates in Leicestershire are lower than the national rate (222.3 per 100,000 population):
 - Melton; 220.5 per 100,000 (5 cases)
 - Oadby & Wigston; 171.3 per 100,000 (7 cases)
 - Charnwood; 148.9 per 100,000 (26 cases)
- Rutland has a higher incidence rate of Covid-19 cases (471.1 per 100,000) than England for people aged 17-21. This equates to 8 cases.



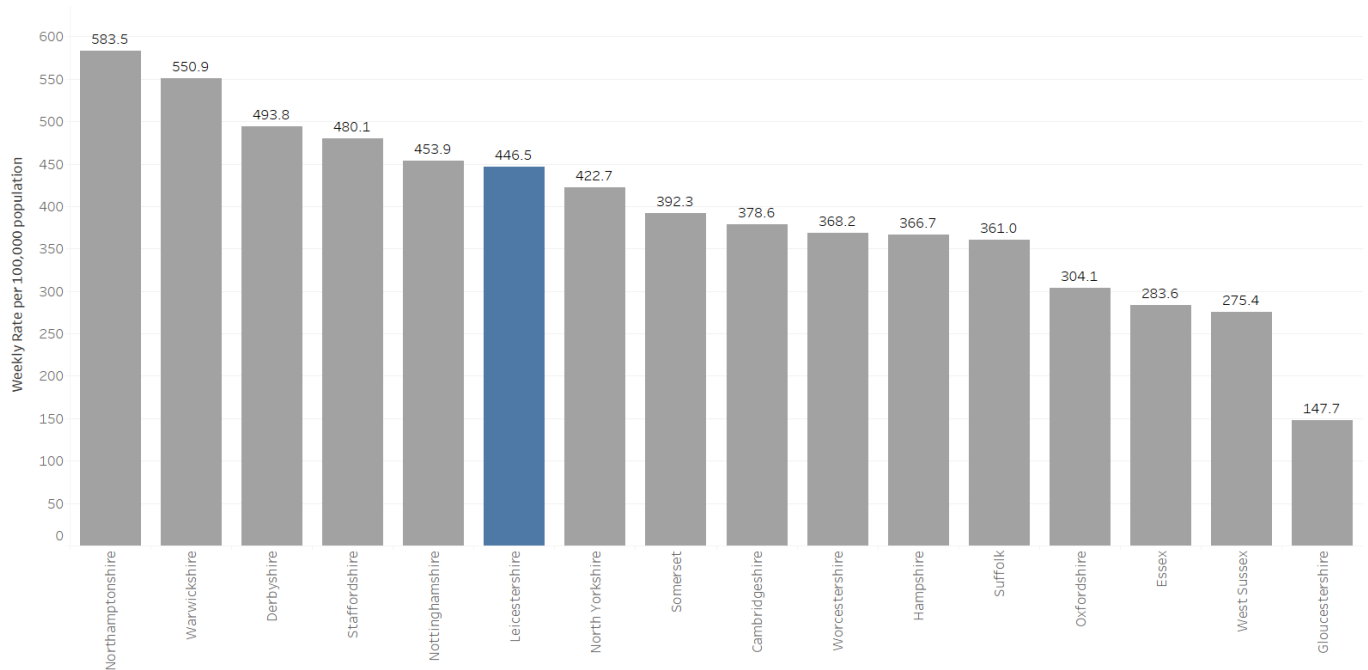
7. North West Leicestershire has the highest weekly incidence rate of Covid-19 cases for people aged 60+ in the county

- The incidence rate for Covid-19 cases in people aged 60+ in Leicestershire showed a declining trend between the beginning of January and the middle of May, with the exception of the first two weeks of April where the rate showed an increasing trend. From the middle of May to the first week of June the rate showed an increasing trend, before fluctuating for two weeks. Since then the rate has shown an increasing trend, with the exception of the period between the 18th of July and the 30th of July and the last four weeks where the incidence rate has fluctuated. The rate for Leicestershire (147.7 per 100,000 population) is higher than the national rate (140.6 per 100,000 population) as of 3rd October.
- The latest weekly incidence rates of Covid-19 cases for people aged 60+ (as of 3rd October) show that the following area rates in Leicestershire are higher than the national rate (140.6 per 100,000 population):
 - North West Leicestershire; 178.3 per 100,000 (49 cases)
 - Blaby; 163.7 per 100,000 (44 cases)
 - Hinckley & Bosworth; 157.7 per 100,000 (51 cases)
 - Harborough; 143.7 per 100,000 (39 cases)
- The following area rates in Leicestershire are lower than the national rate (140.6 per 100,000 population):
 - Oadby & Wigston; 139.9 per 100,000 (22 cases)
 - Charnwood; 132.9 per 100,000 (59 cases)
 - Melton; 102.6 per 100,000 (16 cases)
- Rutland has a lower incidence rate of Covid-19 cases (69.1 per 100,000) than England for people aged 60+. This equates to 9 cases.



8. Leicestershire has seen a decrease in the weekly rate of Covid-19 cases

- There has been a decrease in the weekly rate of Covid-19 cases in Leicestershire from 520.3 (per 100,000 population) in week 38 of 2021 to 446.5 (per 100,000 population) in week 39 of 2021.
- As of week 39 (27th September to 3rd October 2021), Leicestershire is ranked 22nd (highest) out of 149 upper tier local authorities and ranked 6th (highest) out of its CIPFA similar areas.



9. The MSOA with the highest count of Covid-19 cases in the last week was Desford & Newbold Verdon in Hinckley and Bosworth

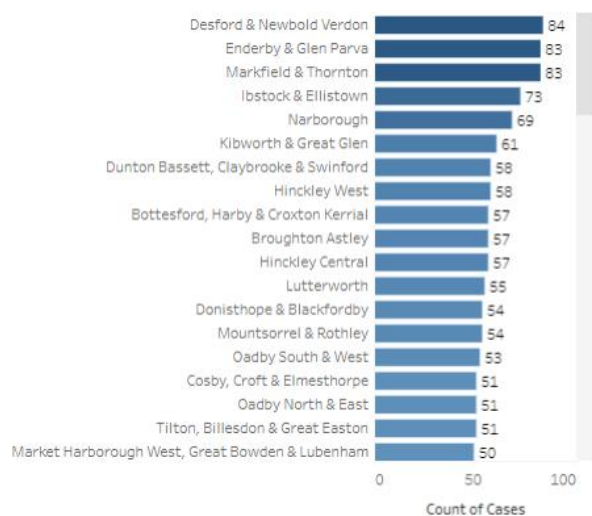
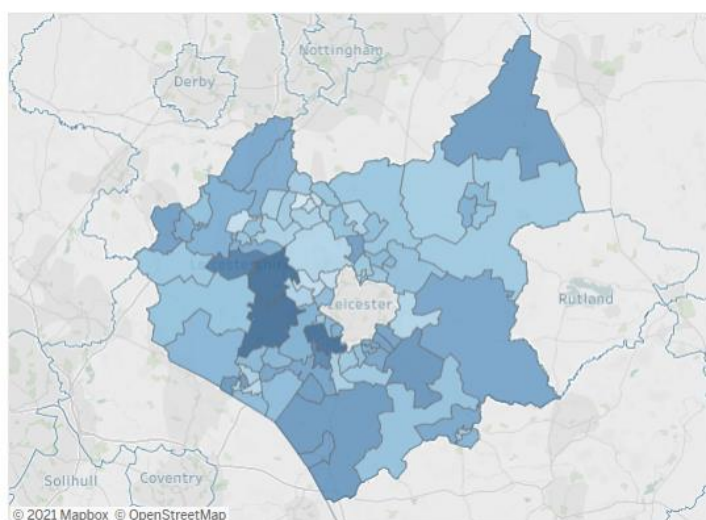
- Up to 5th October (week 39 of 2021), the Middle Super Output Area (MSOA) with the highest count of confirmed cases of Covid-19 was Desford & Newbold Verdon with 84 reported cases. This was followed by:
 - Enderby & Glen Parva (83), Markfield & Thornton (83)
 - Ibstock & Ellistown (73)
 - Narborough (69)
 - Kibworth & Great Glen (61)
 - Dunton Bassett, Claybrooke & Swinford (58), Hinckley West (58)
 - Bottesford, Harby & Croxton Kerrial (57), Broughton Astley (57), Hinckley Central (57)
 - Lutterworth (55)
- All other areas recorded less than 55 cases in the last week.
- Areas that recorded between zero and two cases in the last week have been suppressed due to data disclosure and are represented as white in the map below.

Weekly Counts of Lab-confirmed Covid-19 cases by Middle Layer Super Output Area, Leicester, Leicestershire and Rutland

Date as number: 05/10/2021
 Local Authority: Leicestershire



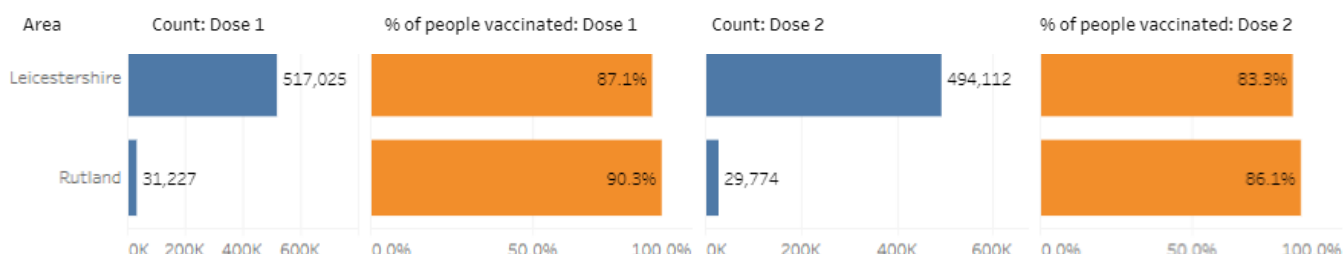
COVID-19 Cases:
 0 84



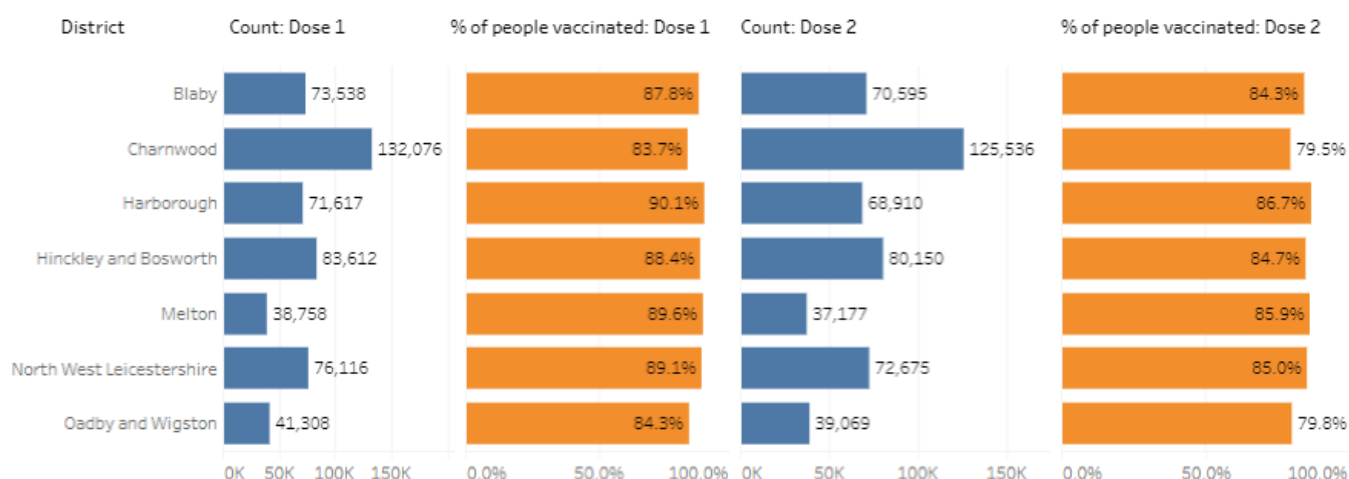
10. Covid-19 Vaccination Uptake Summary

The following tables show a summary of Covid-19 vaccination uptake by Local Authority and District with a breakdown for the over 18 age cohort.

- Up to 3rd October 2021, the Covid-19 dose 1 vaccination uptake for the over 18 age cohort was 87.1% in Leicestershire and 90.3% in Rutland. The Covid-19 dose 2 vaccination uptake for the over 18 age cohort in Leicestershire was 83.3%, whilst the dose 2 uptake in Rutland was 86.1%.

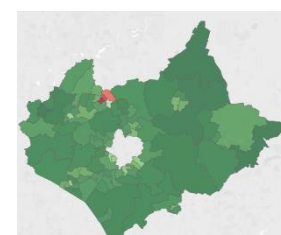


- Most districts (apart from Charnwood and Oadby and Wigston) have a Covid-19 dose 1 vaccination uptake for the over 18 age cohort of over 85%, with Harborough having the highest uptake with 90.1% and Charnwood having the lowest with 83.7%. With the exception of Charnwood and Oadby and Wigston, all districts have a Covid-19 dose 2 vaccination uptake for the over 18 age cohort of over 80%, with Harborough having the highest uptake with 86.7% and Charnwood having the lowest with 79.5%.



The following map shows a summary of Covid-19 vaccination uptake (dose 1) in Leicestershire and Rutland by Middle Super Output Area (MSOA) for the over 18 age cohort.

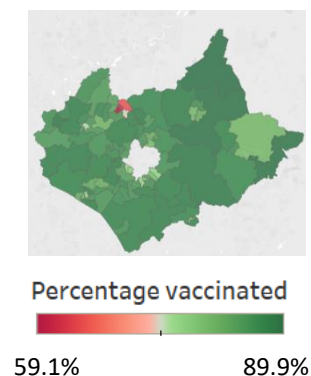
- Up to 3rd October 2021, Ashby de la Zouch South was the MSOA with the highest Covid-19 vaccination uptake for the over 18 age cohort with an uptake of 92.8%. This was followed by:
 - Bottesford, Harby & Croxton Kerrial; 92.7%
 - Ketton, Ryhall & Luffenham; 92.6%
 - Waltham, Wymondham & Great Dalby; 92.5%
 - Barrow upon Soar; 91.8%
 - Packington, Ravenstone & Coleorton; 91.8%
 - Tilton, Billesdon & Great Easton; 91.8%
- Loughborough - University was the MSOA with the lowest Covid-19 vaccination uptake for the over 18 age cohort with an uptake of 65.0%. This was followed by:
 - Loughborough Storer & Queen's Park; 66.9%
 - Loughborough Lemington & Hastings; 71.2%
 - Loughborough – Shelthorpe & Woodthorpe; 78.6%
 - Thorpe Astley; 80.2%



Percentage vaccinated
65.0% 92.8%

The following map shows a summary of Covid-19 vaccination uptake (dose 2) in Leicestershire and Rutland by Middle Super Output Area (MSOA) for the over 18 age cohort.

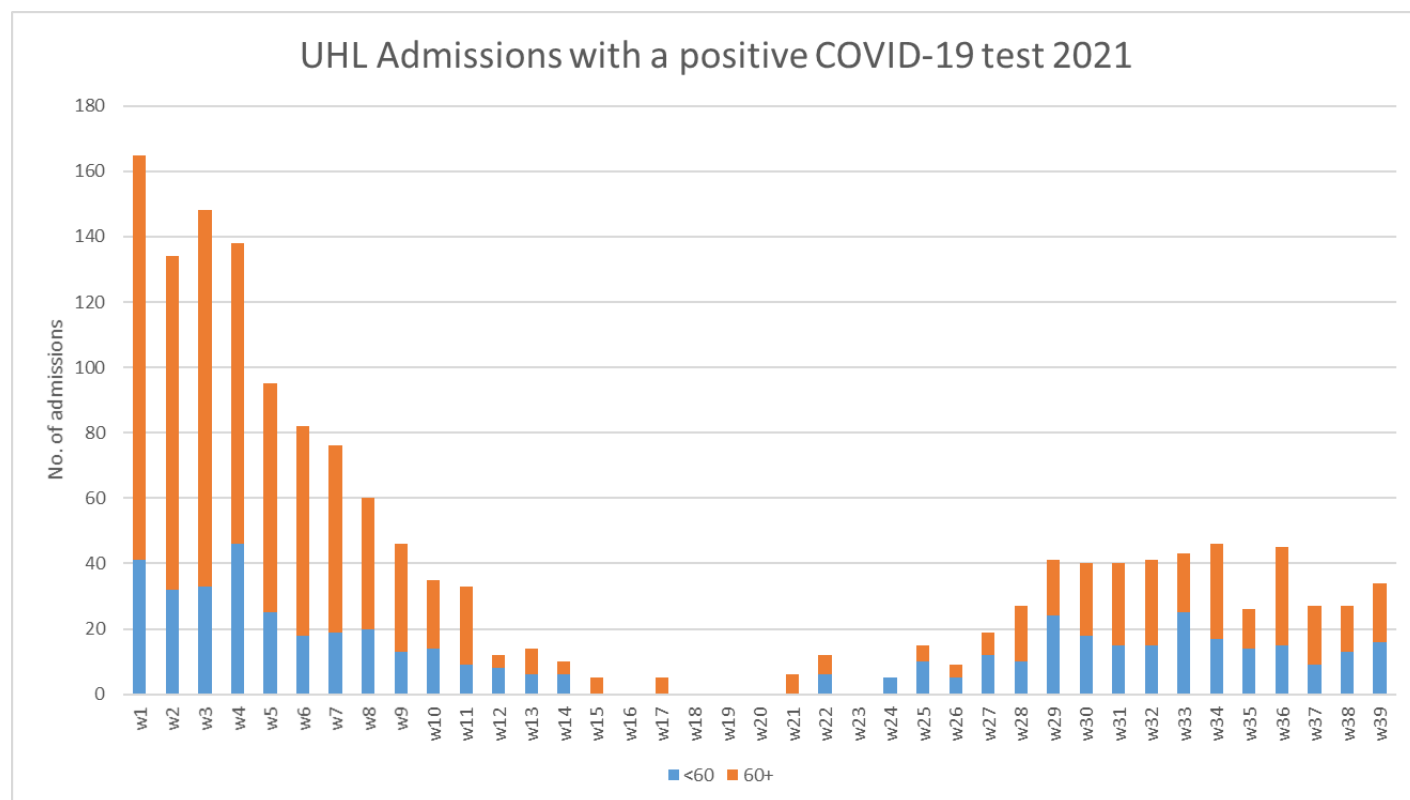
- Up to 3rd October 2021, Bottesford, Harby & Croxton Kerrial was the MSOA with the highest Covid-19 vaccination uptake for the over 18 age cohort with an uptake of 89.9%. This was followed by:
 - Ketton, Ryhall & Luffenham; 89.7%
 - Waltham, Wymondham & Great Dalby; 89.6%
 - Ashby de la Zouch South; 89.0%
 - Tilton, Billesdon & Great Easton; 88.8%
- Loughborough – University was the MSOA with the lowest Covid-19 vaccination uptake for the over 18 age cohort with an uptake of 59.1%. This was followed by:
 - Loughborough Storer & Queen's Park; 60.9%
 - Loughborough Lemyngton & Hastings; 65.0%
 - Loughborough – Shelthorpe & Woodthorpe; 73.8%
 - Coalville; 75.7%



11. Admissions with Covid-19 to UHL

Note: There is no update available for this data this week.

- Up to 2nd October, 3,578 admissions with Covid-19 have been made to UHL by Leicestershire residents since the start of the pandemic.
- Patients aged 60+ account for just under three-quarters (72%) of all admissions from Leicestershire residents.
- In week 39 (26th September 2021 to 2nd October 2021), there were 34 admissions with Covid-19 made to UHL by Leicestershire residents; 18 (53%) of these admissions were patients aged 60+.



Note: Counts less than three have been suppressed.

12. District Level Summary

- **Oadby & Wigston** continues to have the highest rate of Covid-19 cases and deaths in the county. The rate of cumulative cases is significantly higher in comparison to the England average.
- From the beginning of September to the 9th November, the weekly counts of cases had shown an increasing trend in Oadby and Wigston. Between the w/c 9th November and the w/c 28th December, the weekly counts of cases fluctuated. The weekly counts of cases then showed a declining trend until the third week of May. Between the third week of May and the 12th of July the weekly counts showed an increasing trend. Since then the weekly counts of cases have fluctuated in Oadby and Wigston.
- The weekly counts of cases have decreased from 287 in w/c 27th September to 270 in w/c 4th October.
- The latest weeks data on death occurrences shows two deaths involving Covid-19 were recorded in Oadby & Wigston in week 39 of 2021; both deaths occurred in a hospital.
- **North West Leicestershire** has the third highest rate of Covid-19 cases and the second highest rate of deaths in the county. The rate of cumulative cases is significantly higher than the England average.
- From early September to the 9th November an increasing trend in the weekly counts of cases had been witnessed in North West Leicestershire. Following this, the weekly counts of cases decreased each week for four weeks. The weekly counts of cases then increased for three weeks, before showing a declining trend throughout January, February, March, April. Throughout May the count fluctuated, since then the count increased week on week until the w/c 12th July. The count of cases then decreased for 3 weeks before fluctuating over the past nine weeks.
- The latest weekly counts of cases have decreased from 569 in w/c 27th September to 452 in w/c 4th October.
- The latest weekly count of deaths shows one death involving Covid-19 occurred in North West Leicestershire in week 39 of 2021; this death occurred in a hospital.
- **Melton** has the lowest rate of Covid-19 cases and the third highest rate of deaths in the county. The rate of cumulative cases is significantly lower than the England average.
- From mid-September, the weekly counts of cases had been increasing week on week in Melton, showing a peak around the 9th of November. A second peak was witnessed around 28th of December. Through January to the end of March weekly counts of cases had shown a declining trend, since then the weekly counts of cases in Melton had fluctuated until mid May. From mid May until w/c 12th July, the weekly count of cases increased week on week. The case count then decreased for 2 weeks before fluctuating over the past 10 weeks.
- The latest weekly count of cases have decreased from 231 in w/c 27th September to 210 in w/c 4th October.
- The latest weekly count of deaths involving Covid-19 shows that no deaths occurred in Melton in week 39 of 2021.
- **Blaby** has the second highest rate of Covid-19 cases in the county and the fourth highest rate of deaths. The rate of cumulative cases is significantly higher compared to the England average.
- From mid-September, the weekly counts of cases in Blaby had shown an increasing trend, with a peak around the 9th of November. From then, the weekly counts of cases have fluctuated, with the exception of the last three weeks of December and the first week of January where the weekly counts of cases increased each week. From early January to mid May, the weekly counts of cases had shown a declining trend. Since mid May, the weekly count of cases have shown an

increasing trend with the exception of the last two weeks where the weekly counts of cases have decreased.

- The latest weekly counts of cases have decreased from 562 in w/c 27th September to 466 in w/c 4th October.
- The latest weeks data shows one death involving Covid-19 was recorded in Blaby in week 39 of 2021; this death occurred in an 'other' setting.
- **Hinckley & Bosworth** has the third lowest rate of Covid-19 cases and third lowest rate of deaths in the county. The rate of cumulative cases is significantly lower compared to the England average.
- From mid-September to the 9th of November, the weekly counts of cases had increased each week in Hinckley and Bosworth. The weekly counts of cases had fluctuated from November 9th to January 11th. From then until mid March the weekly counts of cases decreased, before fluctuating until late May. Since the end of May there has been an increasing trend in the weekly counts of cases, apart from in the last 12 weeks where the count of cases fluctuated.
- The latest weekly counts of cases have increased from 524 in w/c 27th September to 559 in w/c 4th October.
- The latest weeks data shows no deaths involving Covid-19 were recorded in Hinckley & Bosworth in week 39 of 2021.
- **Charnwood** has the fourth highest rate of Covid-19 cases and the second lowest rate of deaths in the county. The rate of cumulative cases is significantly higher than the England average.
- The weekly counts of cases in Charnwood had shown an increasing trend from early September to mid-October, showing a peak around the 19th of October. Between the 19th of October and the 23rd November the weekly counts of cases showed a declining trend. Following this, the weekly counts of cases increased each week in Charnwood, peaking around December 28th. The rate then showed a declining trend until the 3rd of May, before showing an increasing trend for 10 weeks. Between the 19th of July and the 6th of September the weekly count of cases fluctuated. Since then the count of cases has declined week on week.
- The latest weekly counts of cases have decreased from 592 in w/c 27th September to 573 in w/c 4th October.
- The latest weeks data shows two deaths involving Covid-19 were recorded in Charnwood in week 39 of 2021; one death occurred in a hospital and one death occurred in a care home.
- **Harborough** has the second lowest rate of Covid-19 cases and the lowest rate of deaths in the county. The rate of cumulative cases is significantly lower in comparison to the England average.
- From the beginning of September to the 9th November, the weekly counts of cases had shown an increasing trend in Harborough. Between the w/c 9th November and the w/c 7th December the weekly counts of cases showed a declining trend. Between then and December 28th, the weekly counts of cases had increased each week before showing a declining trend until the end of March. Throughout April and May the rate had fluctuated, before showing an increasing trend over the next seven weeks. Over the last 12 weeks the count of cases has fluctuated.
- The latest weekly counts of cases have decreased from 468 in w/c 27th September to 385 in w/c 4th October.
- The latest weeks data on death occurrences shows that one death involving Covid-19 was recorded in Harborough in week 39 of 2021; this death occurred in an 'other' setting.

If you require information contained in this leaflet in another version e.g. large print, Braille, tape or alternative language please telephone: 0116 305 6803, Fax: 0116 305 7271 or Minicom: 0116 305 6160.

જો આપ આ માહિતી આપની ભાષામાં સમજવામાં થોડી મદદ ઇચ્છતાં હો તો 0116 305 6803 નંબર પર ફોન કરશો અને અમે આપને મદદ કરવા યત્નશીલ રહીશું.

ਜੇਕਰ ਤੁਹਾਨੂੰ ਇਸ ਜਾਣਕਾਰੀ ਨੂੰ ਸਮਝਣ ਵਿਚ ਕੁਝ ਮਦਦ ਚਾਹੀਦੀ ਹੈ ਤਾਂ ਕਿਰਪਾ ਕਰਕੇ 0116 305 6803 ਨੰਬਰ ਤੇ ਫੋਨ ਕਰੋ ਅਤੇ ਅਸੀਂ ਤੁਹਾਡੀ ਮਦਦ ਲਈ ਕਿਸੇ ਦਾ ਪ੍ਰਬੰਧ ਕਰ ਦਵਾਂਗੇ।

এই তথ্য নিজের ভাষায় বুঝার জন্য আপনার যদি কোন সাহায্যের প্রয়োজন হয়, তবে 0116 305 6803 এই নম্বরে ফোন করলে আমরা উপযুক্ত ব্যক্তির ব্যবস্থা করবো।

اگر آپ کو یہ معلومات سمجھنے میں کچھ مدد درکار ہے تو براہ مہربانی اس نمبر پر کال کریں
0116 305 6803 اور ہم آپ کی مدد کے لئے کسی کا انتظام کر دیں گے۔

假如閣下需要幫助，用你的語言去明白這些資訊，請致電 0116 305 6803，我們會安排有關人員為你提供幫助。

Jeżeli potrzebujesz pomocy w zrozumieniu tej informacji w Twoim języku, zadzwoń pod numer 0116 305 6803, a my Ci pomożemy.

Business Intelligence Service
Chief Executive's Department
Leicestershire County Council
County Hall
Glenfield
Leicester
LE3 8RA
ri@leics.gov.uk
www.lsr-online.org