

COVID-19: Data Update for Leicestershire

Period 3 November 2021 to 9 November 2021

Headline Summary

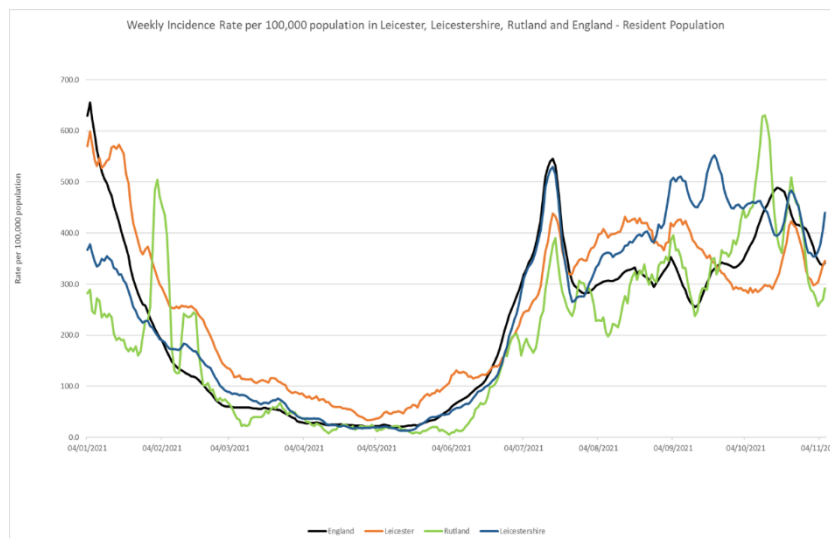
1. Position Statement from the Director of Public Health for Leicestershire

There has been a sharp increase in the Leicestershire rate in the last few days with further increases expected. While around half of the overall increase in the last week is due to increased cases in the school age population, and is consistent with the pattern seen in the last half term, it is noticeable that there are more cases in the older age groups so far this half term.

As the nights get longer and we spend more time indoors, we should remind ourselves of the basic steps of getting fresh air into our houses, keeping our distance and mask wearing when indicated.

2. Trend in Weekly Incidence Rate (All ages) – Leicester, Leicestershire, Rutland and England

- The national rate has increased from 336.8 (period 2nd November to 8th November) to 342.3 per 100,000 population (period 3rd November to 9th November). This latest rate reflects a percentage change decrease of 14% compared to the previous 7 day period for England.
- The Leicestershire rate has increased from 404.9 (period 2nd November to 8th November) to 439.2 per 100,000 population (period 3rd November to 9th November). This latest rate reflects a percentage change increase of 21% compared to the previous 7 day period for Leicestershire. The rate in Leicestershire is higher than the national average.
- The rate for Leicester City stands at 346.0 per 100,000 population and is above the national average. The rate for Rutland stands at 291.5 per 100,000 population and is below the national average.

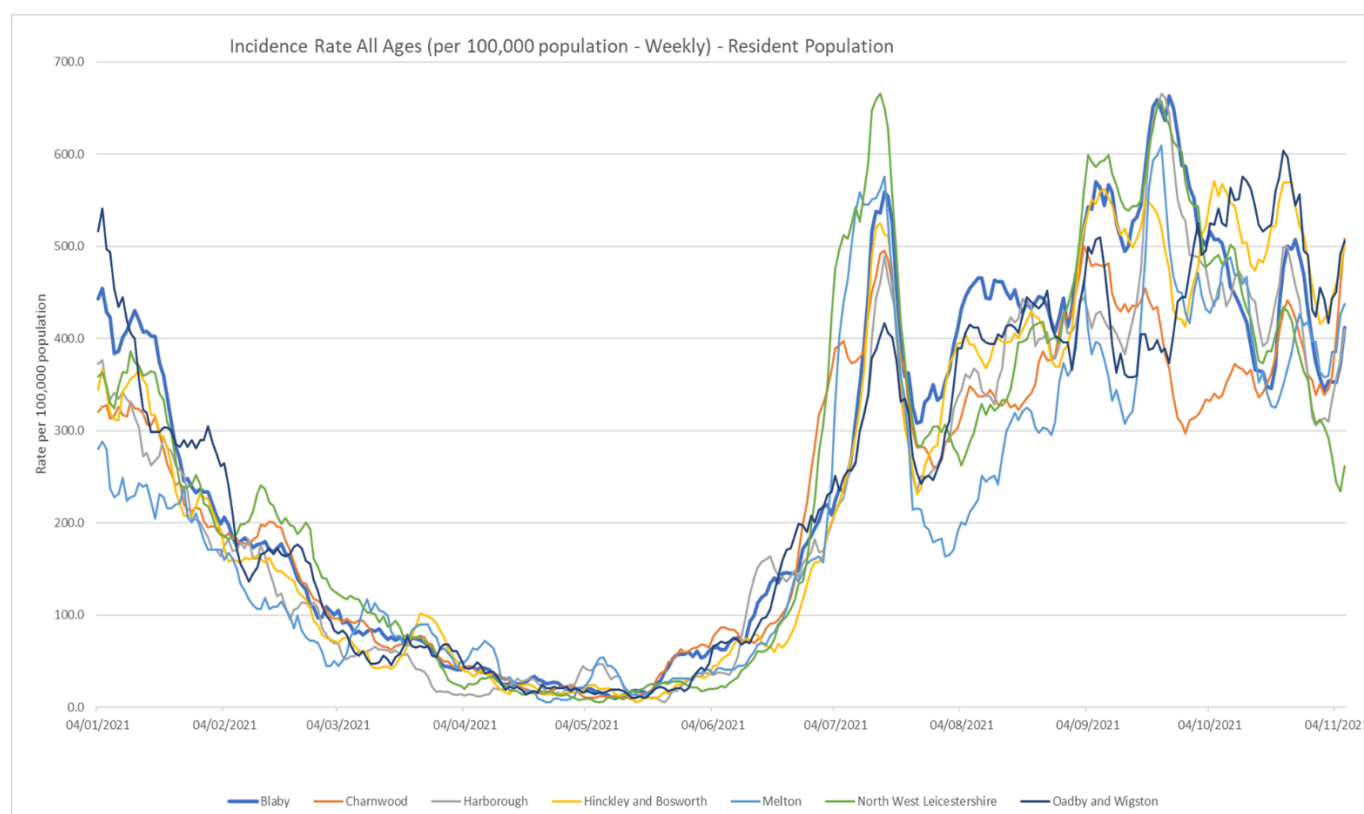


Source: PHE Power BI Line List

3. Trend in Weekly Incidence Rate (all ages) – Leicestershire Districts

- Charnwood has the highest rate in the county (507.9 per 100,000, 957 cases), followed by O&W (506.0 per 100,000, 290 cases), H&B (505.0 per 100,000 population, 574 cases), Melton (437.8 per 100,000, 225 cases), Blaby (412.0 per 100,000, 420 cases), Harborough (410.3 per 100,000, 392 cases) and NWL (261.4 per 100,000 population, 274 cases). Compared to the previous week, most districts (apart from NWL) have increased unlike nationally.

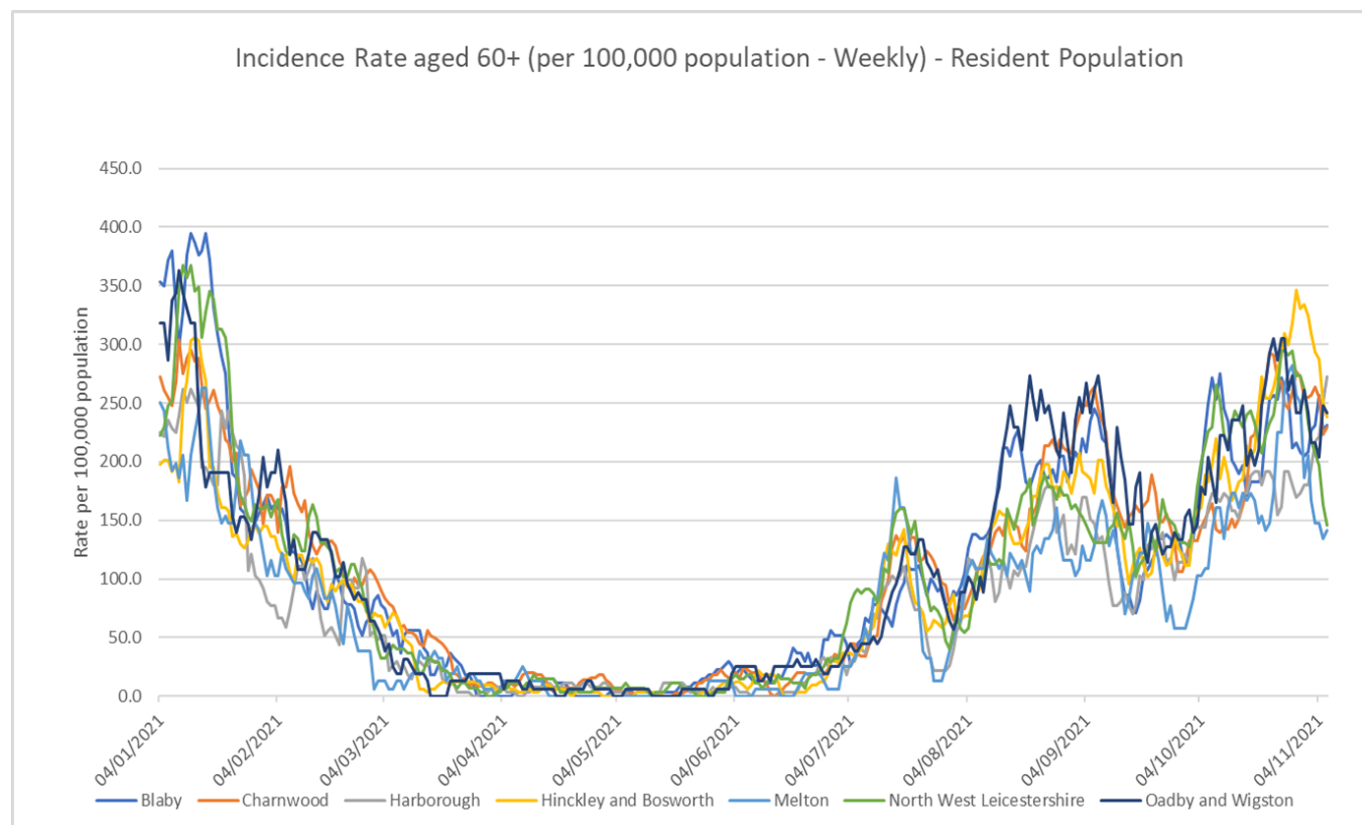
Indicator	Blaby	Charnwood	Harborough	Hinckley & Bosworth	Melton	NW Leicestershire	Oadby and Wigston	Leicestershire	Rutland	England
Weekly incidence rate per 100,000 population (All Ages)	412.0	507.9	410.3	505.0	437.8	261.4	506.0	439.2	291.5	342.3
Weekly count of cases (All Ages)	420	957	392	574	225	274	290	3132	118	193590
Percentage change in cases from previous 7 days (All Ages)	10%	50%	34%	15%	10%	-15%	19%	21%	-5%	-14%
Weekly incidence rate per 100,000 population (60+)	230.7	229.7	272.6	238.1	141.1	145.6	241.7	218.9	99.8	183.4
Weekly count of cases (60+)	62	102	74	77	22	40	38	415	13	1526



Source: PHE Power BI Line Lists

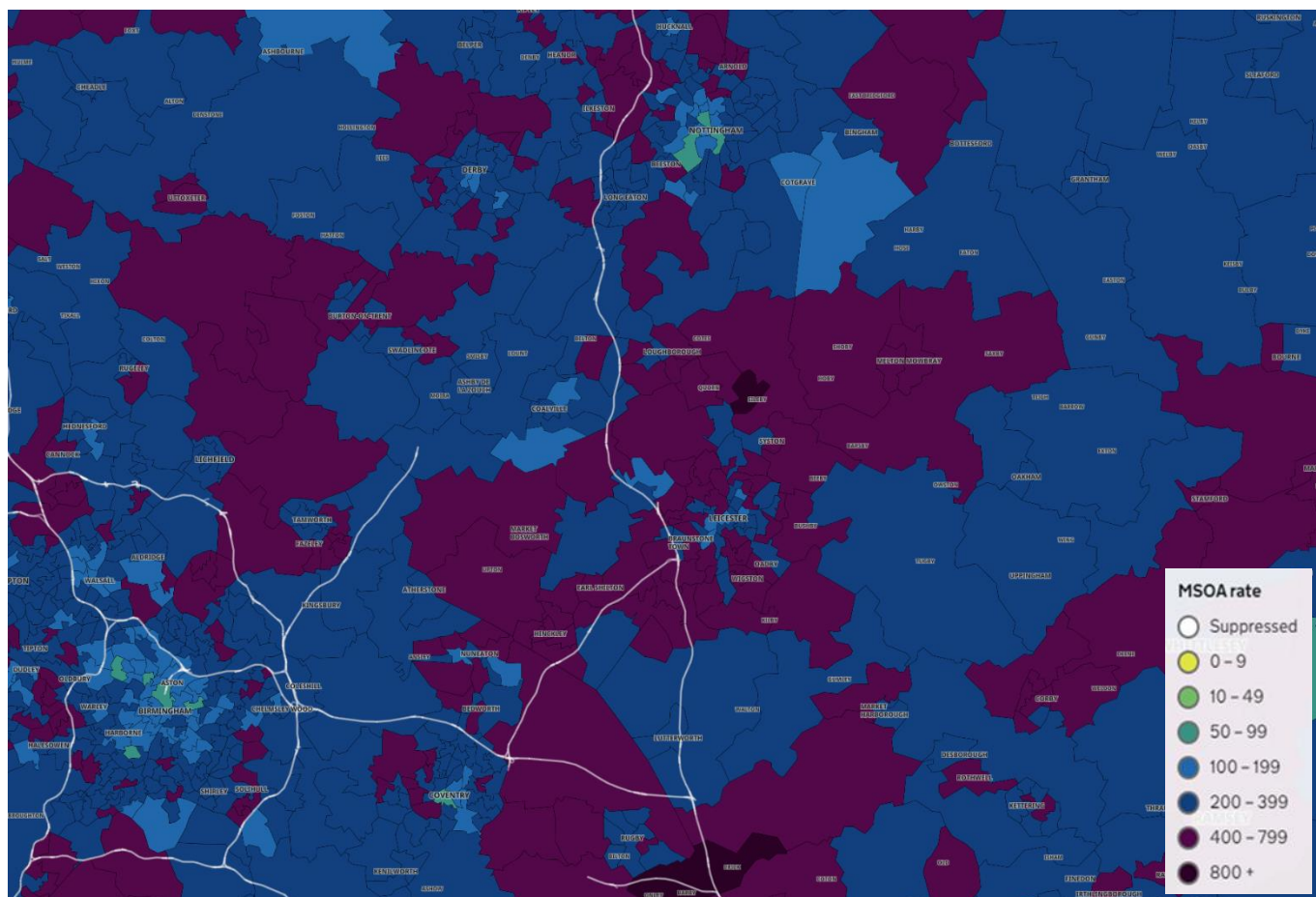
4. Trend in Weekly Incidence Rate (60+) – Leicestershire Districts

- The data for 60+ population show the rate for Leicestershire is 218.9 per 100,000 population, higher than the national rate of 183.4 per 100,000 population. Harbrough has the highest rate in the county (272.6 per 100,000 population, 74 cases), followed by O&W (241.7, 38 cases), H&B (238.1, 77 cases), Blaby (230.7, 62 cases), Charnwood (229.7, 102 cases), NWL (145.6, 40 cases) and Melton (141.1, 22 cases). Compared to the previous week, most districts (apart from Blaby, Harbrough and O&W) have decreased like nationally.



Source: PHE Power BI Line Lists

5. Weekly Cases by Middle Super Output Area (MSOA)



Source: PHE Coronavirus (COVID-19) in the UK Dashboard

If you require information contained in this leaflet in another version e.g. large print, Braille, tape or alternative language please telephone: 0116 305 6803, Fax: 0116 305 7271 or Minicom: 0116 305 6160.

જો આપ આ માહિતી આપની ભાષામાં સમજવામાં થોડી મદદ ઇચ્છતાં હો તો 0116 305 6803 નંબર પર ફોન કરશો અને અમે આપને મદદ કરવા અવસ્થા કરીશું.

ਜੇਕਰ ਤੁਹਾਨੂੰ ਇਸ ਜਾਣਕਾਰੀ ਨੂੰ ਸਮਝਣ ਵਿੱਚ ਕੁਝ ਮਦਦ ਚਾਹੀਦੀ ਹੈ ਤਾਂ ਕਿਰਪਾ ਕਰਕੇ 0116 305 6803 ਨੰਬਰ ਤੇ ਫੋਨ ਕਰੋ ਅਤੇ ਅਸੀਂ ਤੁਹਾਡੀ ਮਦਦ ਲਈ ਕਿਸੇ ਦਾ ਪ੍ਰਬੰਧ ਕਰ ਦਵਾਂਗੇ।

এই তথ্য নিজের ভাষায় বুঝার জন্য আপনার যদি কোন সাহায্যের প্রয়োজন হয়, তবে 0116 305 6803 এই নম্বরে ফোন করলে আমরা উপযুক্ত ব্যক্তির ব্যবস্থা করবো।

اگر آپ کو یہ معلومات سمجھنے میں کچھ مدد درکار ہے تو براہ مہربانی اس نمبر پر کال کریں 0116 305 6803 اور ہم آپ کی مدد کے لئے کسی کا انتظام کر دیں گے۔

假如閣下需要幫助，用你的語言去明白這些資訊，請致電 0116 305 6803，我們會安排有關人員為你提供幫助。

Jeżeli potrzebujesz pomocy w zrozumieniu tej informacji w Twoim języku, zadzwoń pod numer 0116 305 6803, a my Ci pomożemy.

15 November 2021

Business Intelligence Service
Chief Executive's Department
Leicestershire County Council
County Hall, Glenfield
Leicester LE3 8RA

Tel 0116 305 6059
Email: Kajal.lad@leics.gov.uk

Produced by the Business Intelligence Service at Leicestershire County Council.

Whilst every effort has been made to ensure the accuracy of the information contained within this report, Leicestershire County Council cannot be held responsible for any errors or omission relating to the data contained within the report.