

# COVID-19: Data Update for Leicestershire

Period 27 October 2021 to 2 November 2021

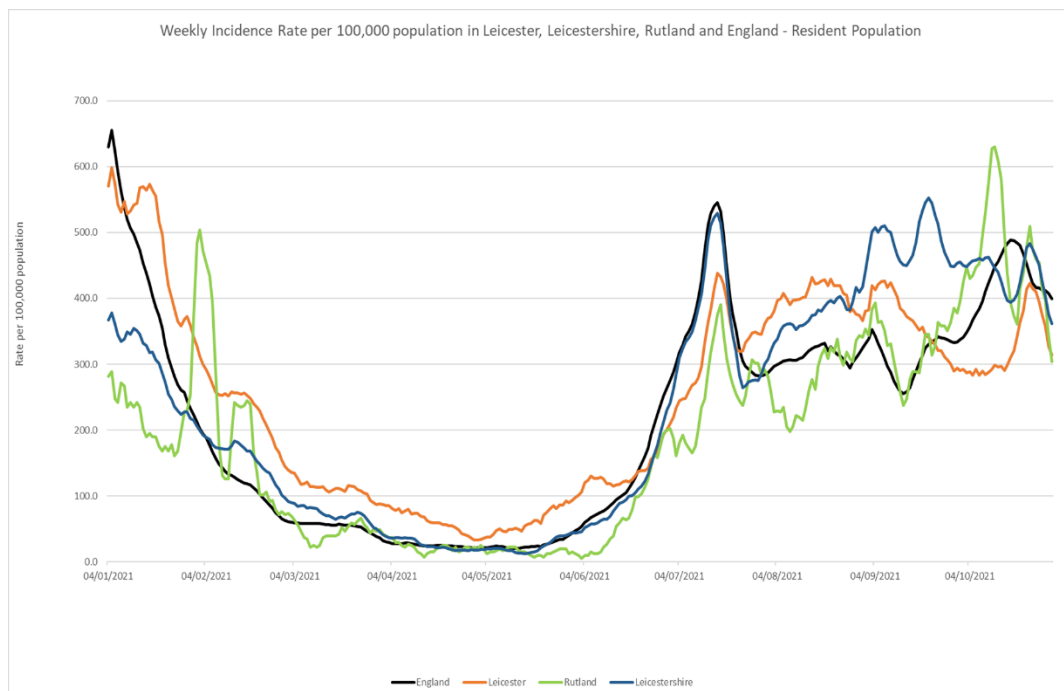
## Headline Summary

### 1. Position Statement from the Director of Public Health for Leicestershire

The rate in Leicestershire has fallen by a quarter in the last week and is currently below the national average, as the half term related cases caused by child to carer mixing have spiked and then fallen away again. We are carefully watching school cases to see if they build in the same way that they did in the October half term.

### 2. Trend in Weekly Incidence Rate (All ages) – Leicester, Leicestershire, Rutland and England

- The national rate has decreased from 407.4 (period 26<sup>th</sup> October to 1<sup>st</sup> November) to 399.7 per 100,000 population (period 27<sup>th</sup> October to 2<sup>nd</sup> November). This latest rate reflects a percentage change decrease of 8% compared to the previous 7 day period for England.
- The Leicestershire rate has decreased from 376.3 (period 26<sup>th</sup> October to 1<sup>st</sup> November) to 361.2 per 100,000 population (period 27<sup>th</sup> October to 2<sup>nd</sup> November). This latest rate reflects a percentage change decrease of 25% compared to the previous 7 day period for Leicestershire. The rate in Leicestershire is lower than the national average.
- The rate for Leicester City stands at 314.1 per 100,000 population and is below the national average. The rate for Rutland stands at 303.9 per 100,000 population and is below the national average.

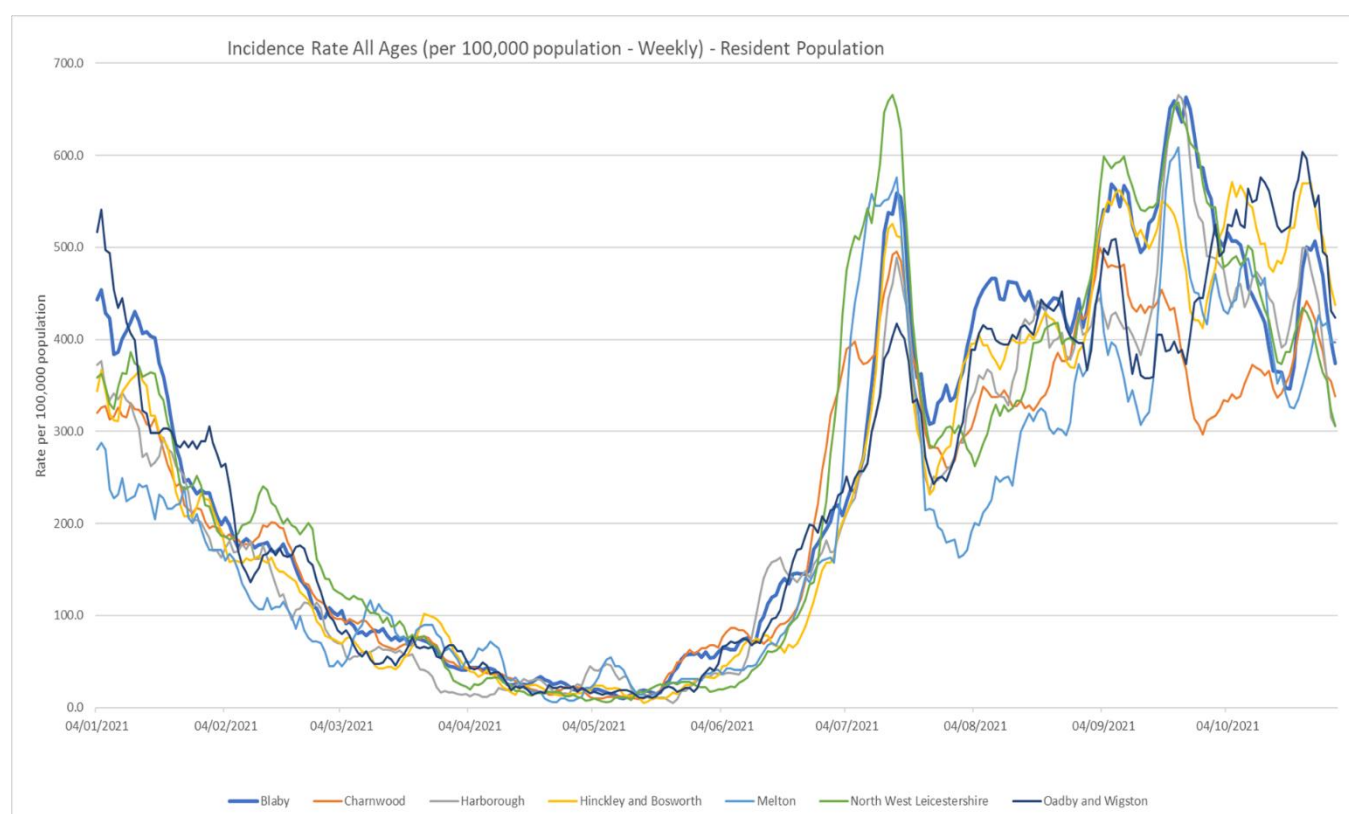


Source: PHE Power BI Line List

### 3. Trend in Weekly Incidence Rate (all ages) – Leicestershire Districts

- H&B has the highest rate in the county (437.2 per 100,000, 497 cases), followed by O&W (424.0 per 100,000 population, 243 cases), Melton (396.9 per 100,000, 204 cases), Blaby (373.7 per 100,000, 381 cases), Charnwood (338.6 per 100,000, 638 cases), NWL (306.3 per 100,000 population, 321 cases) and Harborough (305.6 per 100,000, 292 cases). Compared to the previous week, most districts (apart from Melton) have decreased like nationally.

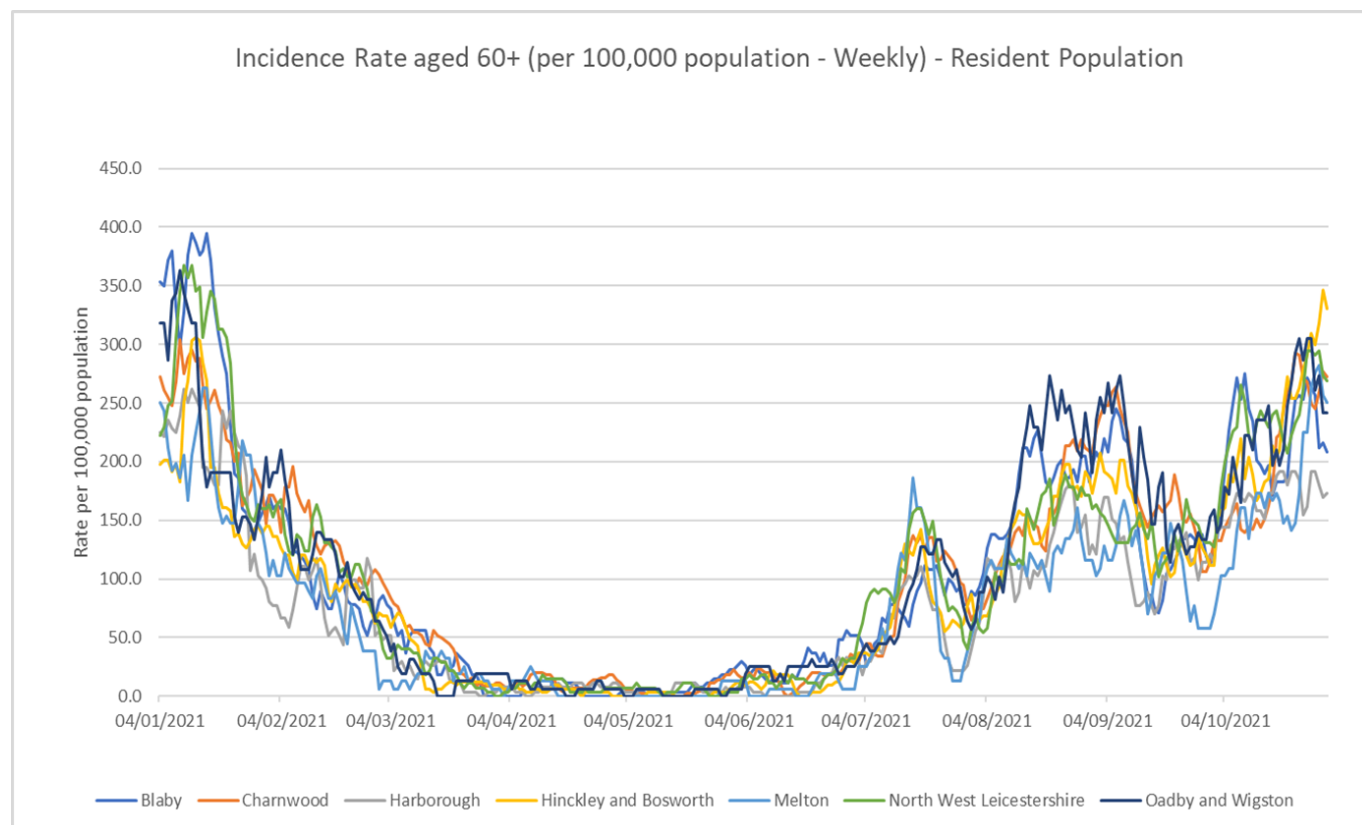
Indicator	Blaby	Charnwood	Harborough	Hinckley & Bosworth	Melton	NW Leicestershire	Oadby and Wigston	Leicestershire	Rutland	England
Weekly incidence rate per 100,000 population (All Ages)	373.7	338.6	305.6	437.2	396.9	306.3	424.0	361.2	303.9	399.7
Weekly count of cases (All Ages)	381	638	292	497	204	321	243	2576	123	226051
Percentage change in cases from previous 7 days (All Ages)	-25%	-23%	-39%	-23%	8%	-29%	-29%	-25%	-40%	-8%
Weekly incidence rate per 100,000 population (60+)	208.4	272.5	173.1	330.8	250.2	269.3	241.7	254.3	130.5	225.0
Weekly count of cases (60+)	56	121	47	107	39	74	38	482	17	1526



Source: PHE Power BI Line Lists

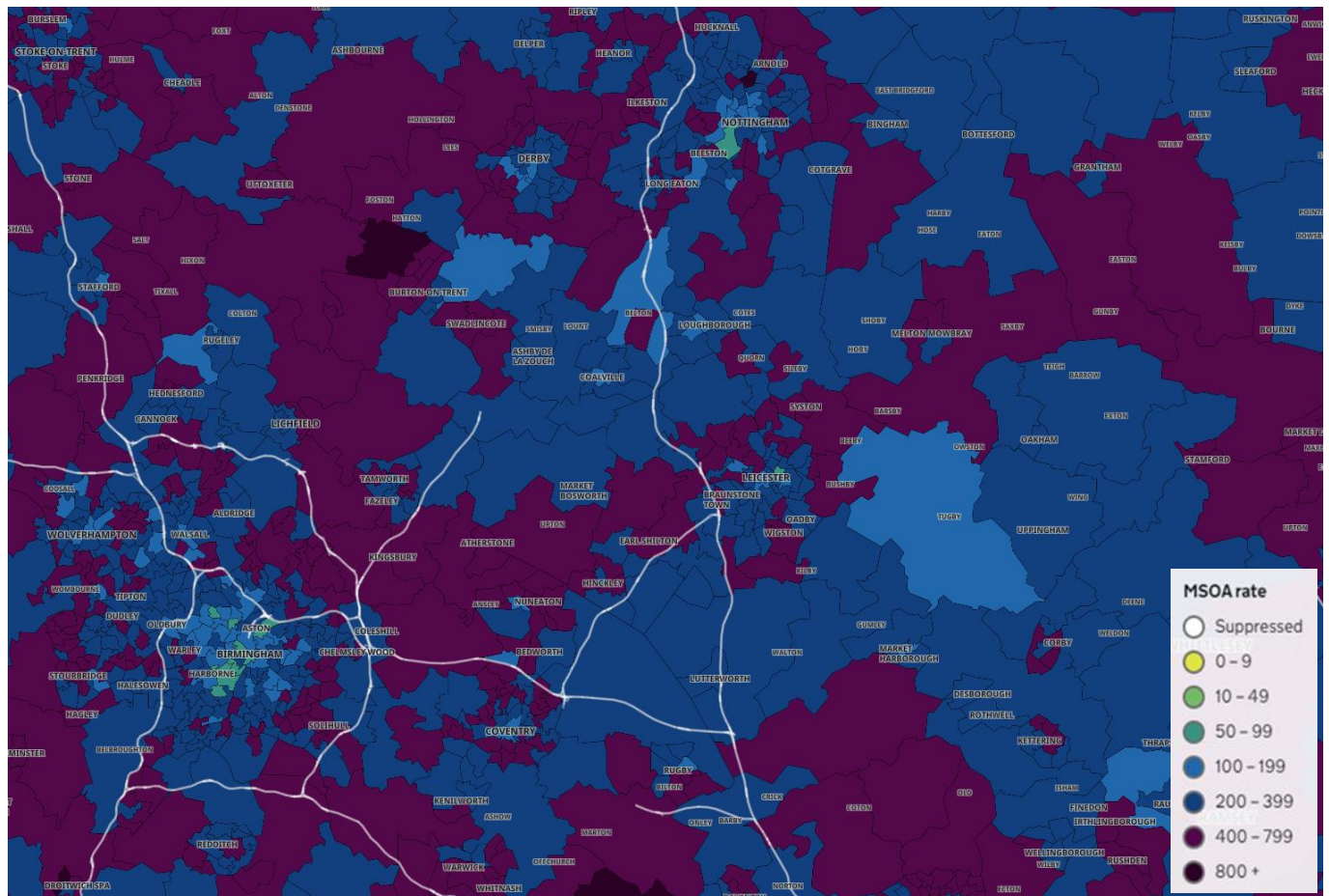
#### 4. Trend in Weekly Incidence Rate (60+) – Leicestershire Districts

- The data for 60+ population show the rate for Leicestershire is 254.3 per 100,000 population, higher than the national rate of 225.0 per 100,000 population. H&B has the highest rate in the county (330.8 per 100,000 population, 107 cases) followed by Charnwood (272.5, 121 cases), NWL (269.3, 74 cases), Melton (250.2, 39 cases), O&W (241.7, 38 cases), Blaby (208.4, 56 cases) and Harborough (173.1, 47 cases). Compared to the previous week, most districts (apart from H&B, Melton and NWL) have decreased.



Source: PHE Power BI Line Lists

## 5. Weekly Cases by Middle Super Output Area (MSOA)



Source: PHE Coronavirus (COVID-19) in the UK Dashboard

If you require information contained in this leaflet in another version e.g. large print, Braille, tape or alternative language please telephone: 0116 305 6803, Fax: 0116 305 7271 or Minicom: 0116 305 6160.

જો આપ આ માહિતી આપની ભાષામાં સમજવામાં થોડી મદદ ઇચ્છતાં હો તો 0116 305 6803 નંબર પર ફોન કરશો અને અમે આપને મદદ કરવા અવસ્થા કરીશું.

ਜੇਕਰ ਤੁਹਾਨੂੰ ਇਸ ਜਾਣਕਾਰੀ ਨੂੰ ਸਮਝਣ ਵਿਚ ਕੁਝ ਮਦਦ ਚਾਹੀਦੀ ਹੈ ਤਾਂ ਕਿਰਪਾ ਕਰਕੇ 0116 305 6803 ਨੰਬਰ ਤੇ ਫੋਨ ਕਰੋ ਅਤੇ ਅਸੀਂ ਤੁਹਾਡੀ ਮਦਦ ਲਈ ਕਿਸੇ ਦਾ ਪ੍ਰਬੰਧ ਕਰ ਦਵਾਂਗੇ।

এই তথ্য নিজের ভাষায় বুঝার জন্য আপনার যদি কোন সাহায্যের প্রয়োজন হয়, তবে 0116 305 6803 এই নম্বরে ফোন করলে আমরা উপযুক্ত ব্যক্তির ব্যবস্থা করবো।

اگر آپ کو یہ معلومات سمجھنے میں کچھ مدد درکار ہے تو براہ مہربانی اس نمبر پر کال کریں 0116 305 6803 اور ہم آپ کی مدد کے لئے کسی کا انتظام کر دیں گے۔

假如閣下需要幫助，用你的語言去明白這些資訊，請致電 0116 305 6803，我們會安排有關人員為你提供幫助。

Jeżeli potrzebujesz pomocy w zrozumieniu tej informacji w Twoim języku, zadzwoń pod numer 0116 305 6803, a my Ci pomożemy.

## 8 November 2021

Business Intelligence Service  
Chief Executive's Department  
Leicestershire County Council  
County Hall, Glenfield  
Leicester LE3 8RA

Tel 0116 305 6059  
Email: [Kajal.lad@leics.gov.uk](mailto:Kajal.lad@leics.gov.uk)

Produced by the Business Intelligence Service at Leicestershire County Council.

Whilst every effort has been made to ensure the accuracy of the information contained within this report, Leicestershire County Council cannot be held responsible for any errors or omission relating to the data contained within the report.