

COVID-19: Data Update for Leicestershire

Period 17 November 2021 to 23 November 2021

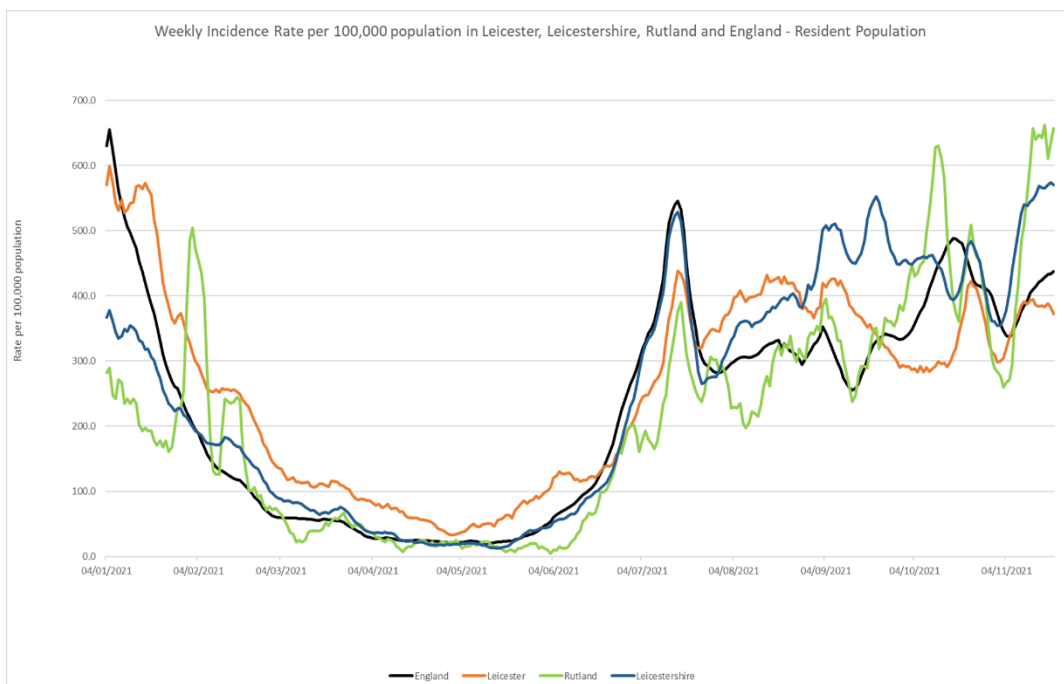
Headline Summary

1. Position Statement from the Director of Public Health for Leicestershire

Rates in Leicestershire have reached the highest level since the start of the pandemic with concern about infections in all age groups. There are signs they may have levelled out but we are waiting to see the potential impact of the newly-identified omicron variant while urging residents to follow the new government measures.

2. Trend in Weekly Incidence Rate (All ages) – Leicester, Leicestershire, Rutland and England

- The national rate has increased from 433.9 (period 16th November to 22nd November) to 437.8 per 100,000 population (period 17th November to 23rd November). This latest rate reflects a percentage change increase of 7% compared to the previous 7 day period for England.
- The Leicestershire rate has decreased from 574.0 (period 16th November to 22nd November) to 570.2 per 100,000 population (period 17th November to 23rd November). This latest rate reflects a percentage change increase of 4% compared to the previous 7 day period for Leicestershire. The rate in Leicestershire is higher than the national average.
- The rate for Leicester City stands at 372.0 per 100,000 population and is below the national average. The rate for Rutland stands at 657.2 per 100,000 population and is above the national average.

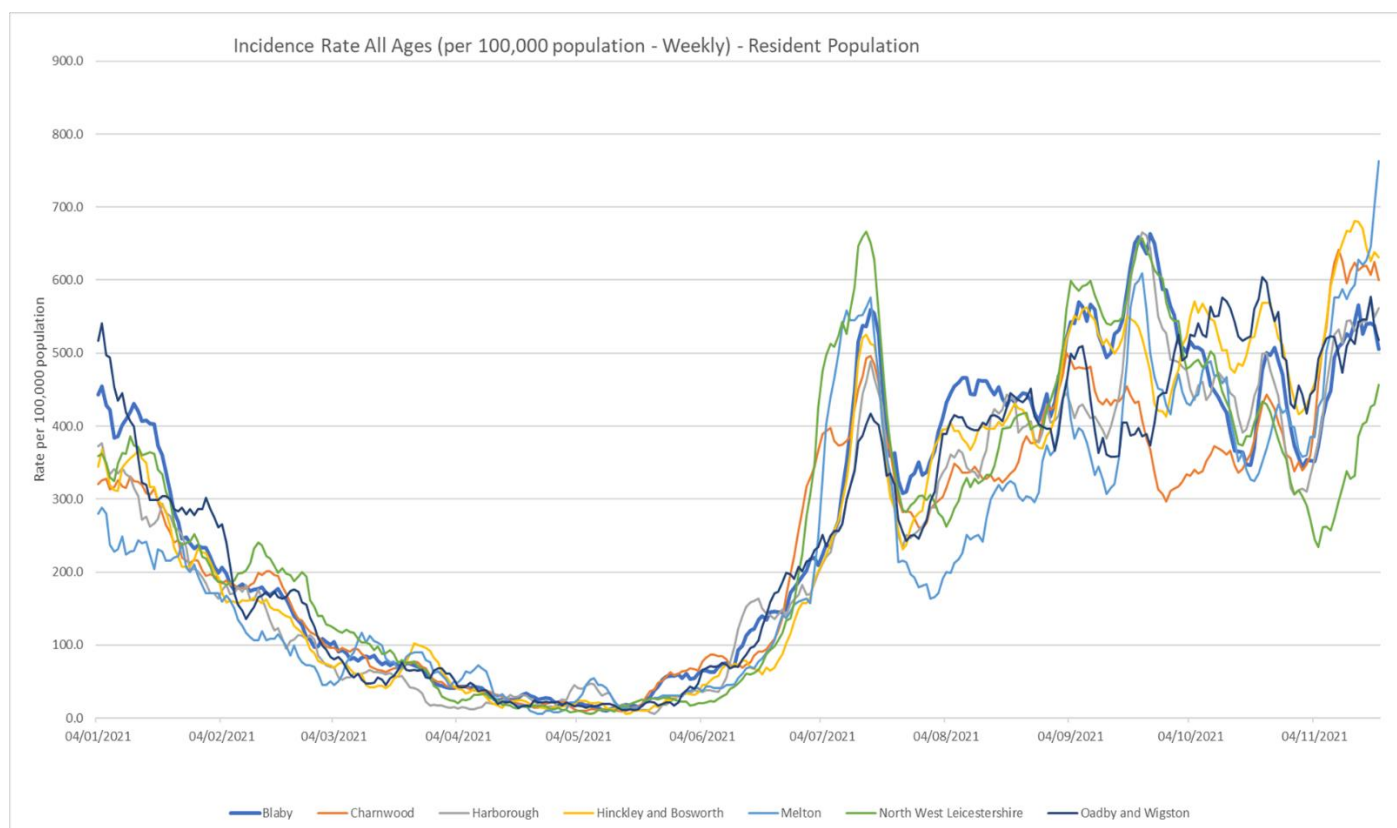


Source: PHE Power BI Line List

3. Trend in Weekly Incidence Rate (all ages) – Leicestershire Districts

- Melton has the highest rate in the county (762.7 per 100,000 population, 392 cases), followed by H&B (630.8 per 100,000, 717 cases), Charnwood (599.7 per 100,000, 1,130 cases), Harborough (561.0 per 100,000, 536 cases), O&W (518.2 per 100,000, 297 cases), Blaby (505.1 per 100,000, 515 cases) and NWL (457.0 per 100,000 population, 479 cases). Compared to the previous week, most districts (apart from Harborough, Melton and NWL) have decreased unlike nationally.

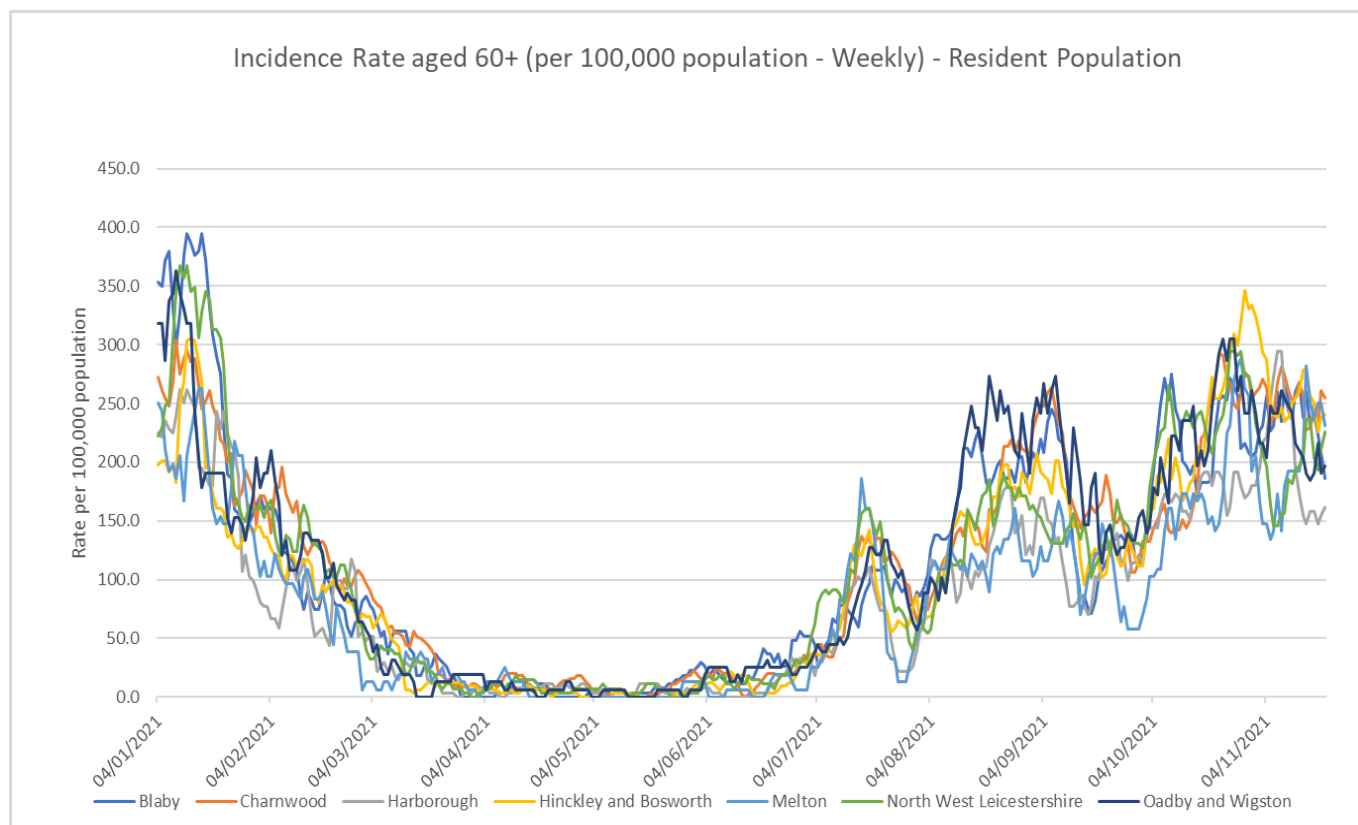
Indicator	Blaby	Charnwood	Harborough	Hinckley & Bosworth	Melton	NW Leicestershire	Oadby and Wigston	Leicestershire	Rutland	England
Weekly incidence rate per 100,000 population (All Ages)	505.1	599.7	561.0	630.8	762.7	457.0	518.2	570.2	657.2	437.8
Weekly count of cases (All Ages)	515	1130	536	717	392	479	297	4066	266	247602
Percentage change in cases from previous 7 days (All Ages)	-3%	-2%	3%	-5%	30%	39%	0%	4%	0%	7%
Weekly incidence rate per 100,000 population (60+)	186.1	254.5	162.1	241.2	230.9	225.6	197.2	218.4	161.2	150.0
Weekly count of cases (60+)	50	113	44	78	36	62	31	414	21	1526



Source: PHE Power BI Line Lists

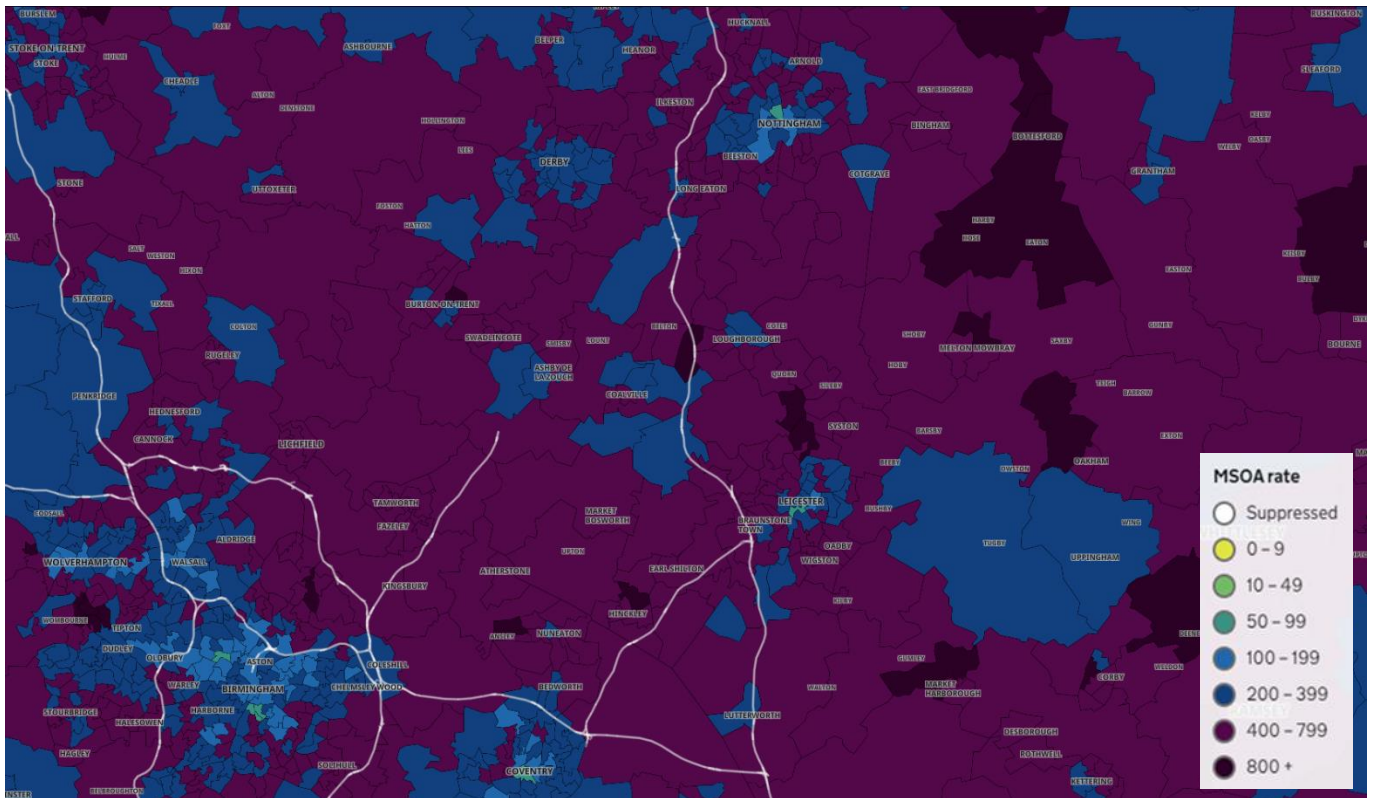
4. Trend in Weekly Incidence Rate (60+) – Leicestershire Districts

- The data for 60+ population show the rate for Leicestershire is 218.4 per 100,000 population, higher than the national rate of 150.0 per 100,000 population. Charnwood has the highest rate in the county (254.5 per 100,000 population, 113 cases), followed by H&B (241.2, 78 cases), Melton (230.9, 36 cases), NWL (225.6, 62 cases), O&W (197.2, 31 cases), Blaby (186.1, 50 cases) and Harborough (162.1, 44 cases). Compared to the previous week, most districts (apart from Melton and NWL) have decreased like nationally.



Source: PHE Power BI Line Lists

5. Weekly Cases by Middle Super Output Area (MSOA)



Source: PHE Coronavirus (COVID-19) in the UK Dashboard

If you require information contained in this leaflet in another version e.g. large print, Braille, tape or alternative language please telephone: 0116 305 6803, Fax: 0116 305 7271 or Minicom: 0116 305 6160.

ਜੇ ਆਪ ਆ ਮਾਭਿੰਨੀ ਆਪਨੀ ਆਖਾਮਾਂ ਸਮਝਵਾਮਾਂ ਥੋੜੀ ਮਦਦ
ਓਝੜਨਾਂ ਭੇ ਤੇ 0116 305 6803 ਨੰਬਰ ਪਰ ਫ਼ੋਨ ਕਰਓ ਅਤੇ
ਅਮੇ ਆਪਨੇ ਮਦਦ ਕਰਵਾ ਅਵਸਥਾ ਕਰੀਓ.

ਜੇਕਰ ਤੁਹਾਨੂੰ ਇਸ ਜਾਣਕਾਰੀ ਨੂੰ ਸਮਝਣ ਵਿਚ ਕੁਝ ਮਦਦ ਚਾਹੀਦੀ
ਹੈ ਤਾਂ ਕਿਰਪਾ ਕਰਕੇ 0116 305 6803 ਨੰਬਰ ਤੇ ਫ਼ੋਨ ਕਰੋ ਅਤੇ
ਅਸੀਂ ਤੁਹਾਡੀ ਮਦਦ ਲਈ ਕਿਸੇ ਦਾ ਪ੍ਰਬੰਧ ਕਰ ਦਵਾਂਗੇ।

এই তথ্য নিজের ভাষায় বুঝার জন্য আপনার যদি কোন
সাহায্যের প্রয়োজন হয়, তবে 0116 305 6803 এই নম্বরে
ফোন করলে আমরা উপযুক্ত ব্যক্তির ব্যবস্থা করবো।

اگر آپ کو یہ معلومات سمجھنے میں کچھ مدد درکار ہے تو براہ مہربانی اس نمبر پر کال کریں
0116 305 6803 اور ہم آپ کی مدد کے لئے کسی کا انتظام کر دیں گے۔

假如閣下需要幫助，用你的語言去明白這些資訊，
請致電 0116 305 6803，我們會安排有關人員為你
提供幫助。

Jeżeli potrzebujesz pomocy w zrozumieniu tej informacji
w Twoim języku, zadzwoń pod numer 0116 305 6803,
a my Ci dopomozemy.

29 November 2021

Business Intelligence Service
Chief Executive's Department
Leicestershire County Council
County Hall, Glenfield
Leicester LE3 8RA

Tel: 0116 305 6059
Email: Kajal.lad@leics.gov.uk

Produced by the Business Intelligence Service at Leicestershire County Council.

Whilst every effort has been made to ensure the accuracy of the information contained within this report, Leicestershire County Council cannot be held responsible for any errors or omission relating to the data contained within the report.