

COVID-19: Data Update for Leicestershire

Period 1 December 2021 to 7 December 2021

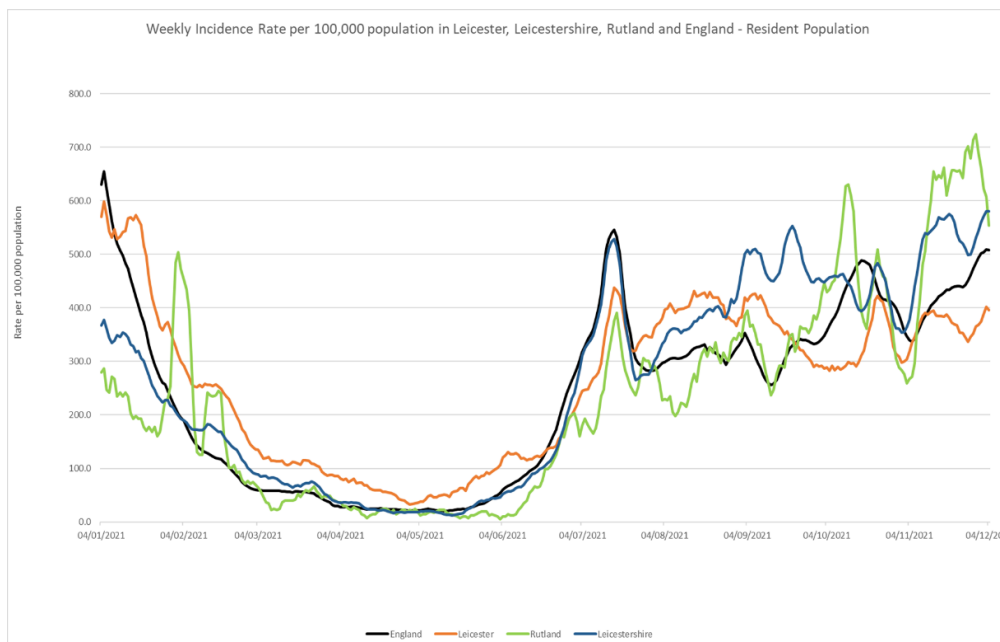
Headline Summary

1. Position Statement from the Director of Public Health for Leicestershire

Cases in Leicestershire continue at a high level overall and, after a recent dip, have increased again by 16% in the last seven days. This appears to be a combination of increased demand for testing driven by concern over the Omicron variant, continued outbreaks in the school age population and the parents of those school age cases then becoming infected.

2. Trend in Weekly Incidence Rate (All ages) – Leicester, Leicestershire, Rutland and England

- The national rate has decreased from 508.6 (period 30th November to 6th December) to 507.7 per 100,000 population (period 1st December to 7th December). This latest rate reflects a percentage change increase of 10% compared to the previous 7 day period for England.
- The Leicestershire rate has increased from 580.0 (period 30th November to 6th December) to 580.2 per 100,000 population (period 1st December to 7th December). This latest rate reflects a percentage change increase of 16% compared to the previous 7 day period for Leicestershire. The rate in Leicestershire is higher than the national average.
- The rate for Leicester City stands at 396.3 per 100,000 population and is below the national average. The rate for Rutland stands at 553.4 per 100,000 population and is above the national average.

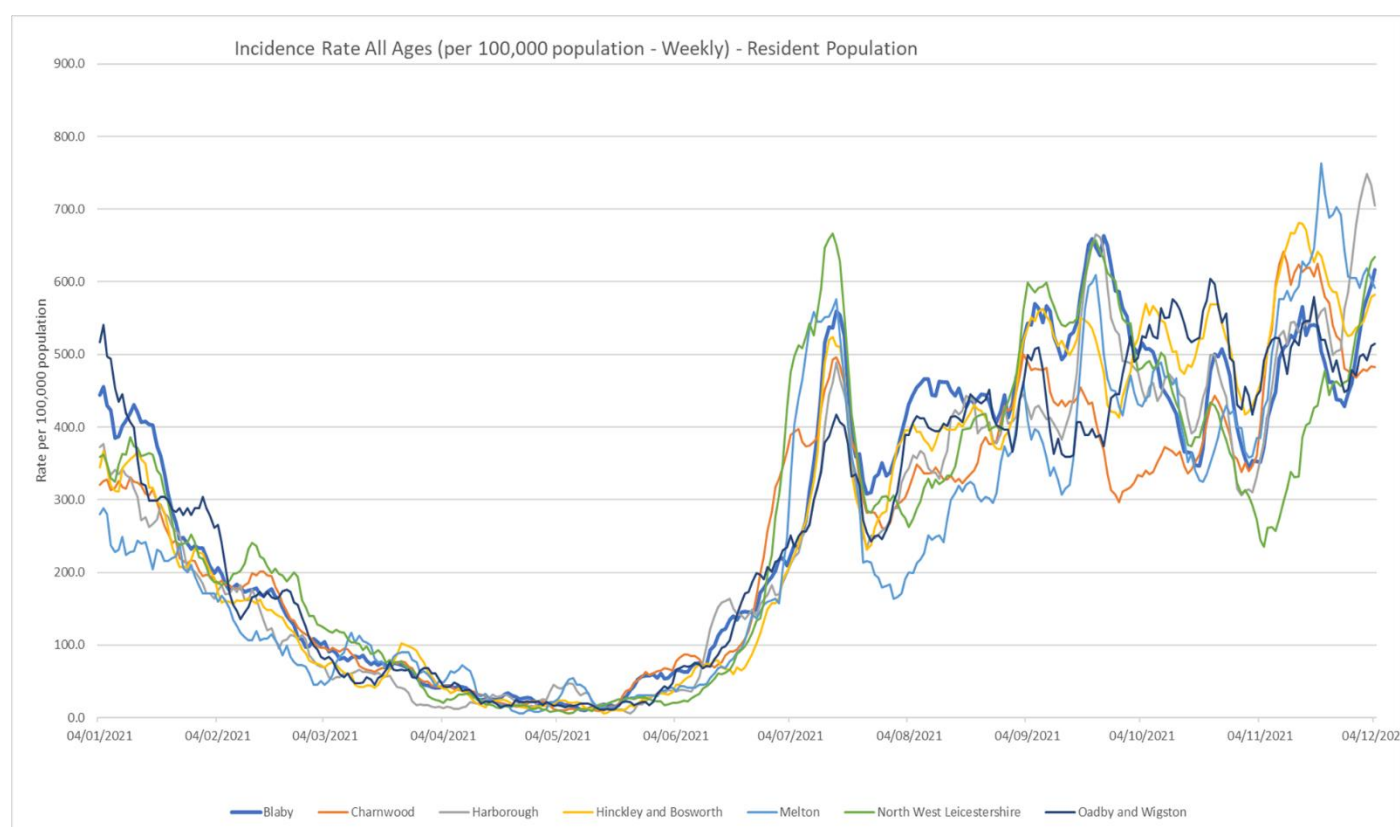


Source: PHE Power BI Line List

3. Trend in Weekly Incidence Rate (all ages) – Leicestershire Districts

- Harborough has the highest rate in the county (704.4 per 100,000 population, 673 cases), followed by NWL (634.5 per 100,000, 665 cases), Blaby (617.0 per 100,000, 629 cases), Melton (591.5 per 100,000, 304 cases), H&B (582.4 per 100,000, 662 cases), O&W (514.7 per 100,000, 295 cases) and Charnwood (482.4 per 100,000 population, 909 cases). Compared to the previous week, most districts (apart from Melton) have increased like nationally.

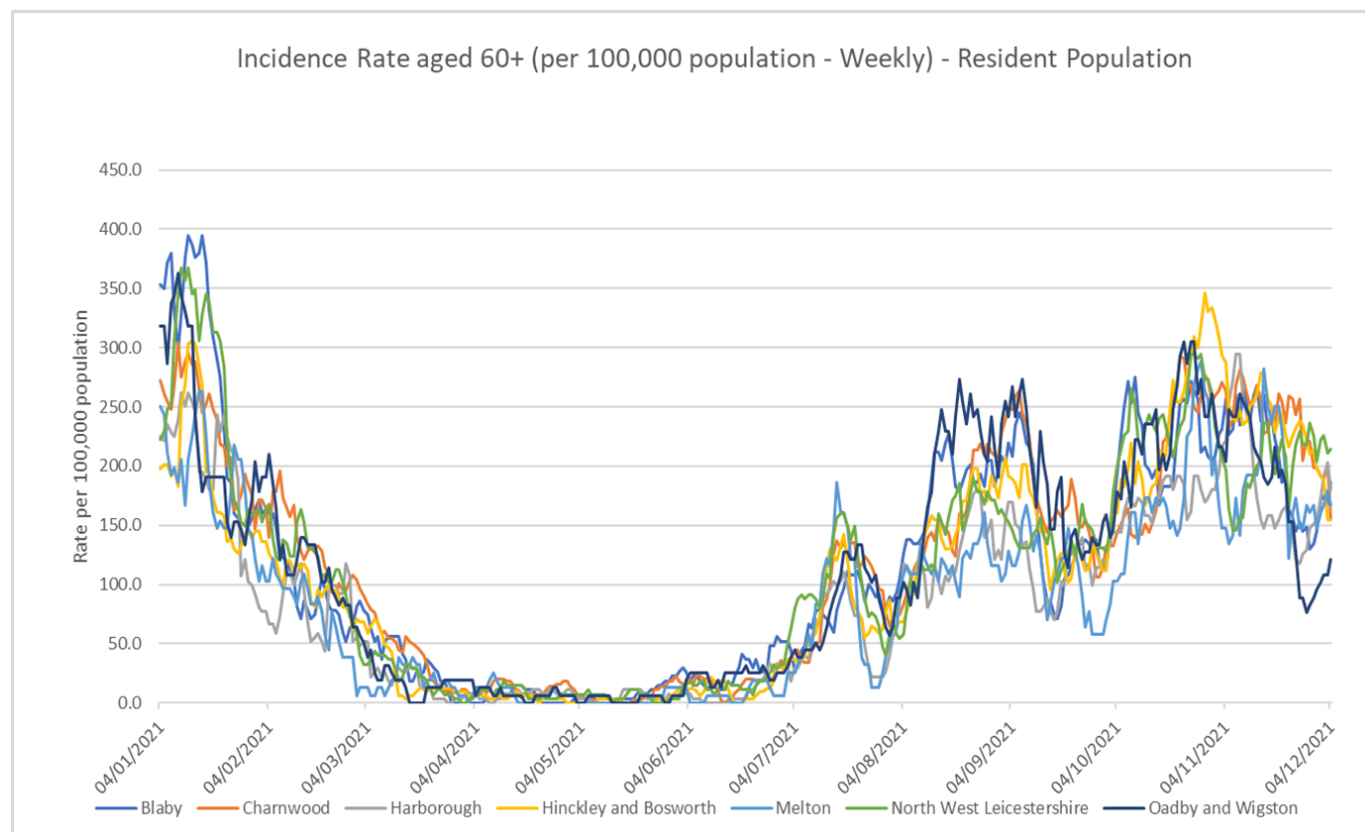
Indicator	Blaby	Charnwood	Harborough	Hinckley & Bosworth	Melton	NW Leicestershire	Oadby and Wigston	Leicestershire	Rutland	England
Weekly incidence rate per 100,000 population (All Ages)	617.0	482.4	704.4	582.4	591.5	634.5	514.7	580.2	553.4	507.7
Weekly count of cases (All Ages)	629	909	673	662	304	665	295	4137	224	287119
Percentage change in cases from previous 7 days (All Ages)	38%	1%	20%	11%	-3%	37%	14%	16%	-19%	10%
Weekly incidence rate per 100,000 population (60+)	186.1	155.4	180.5	154.6	166.8	214.7	120.9	169.9	161.2	133.8
Weekly count of cases (60+)	50	69	49	50	26	59	19	322	21	1526



Source: PHE Power BI Line Lists

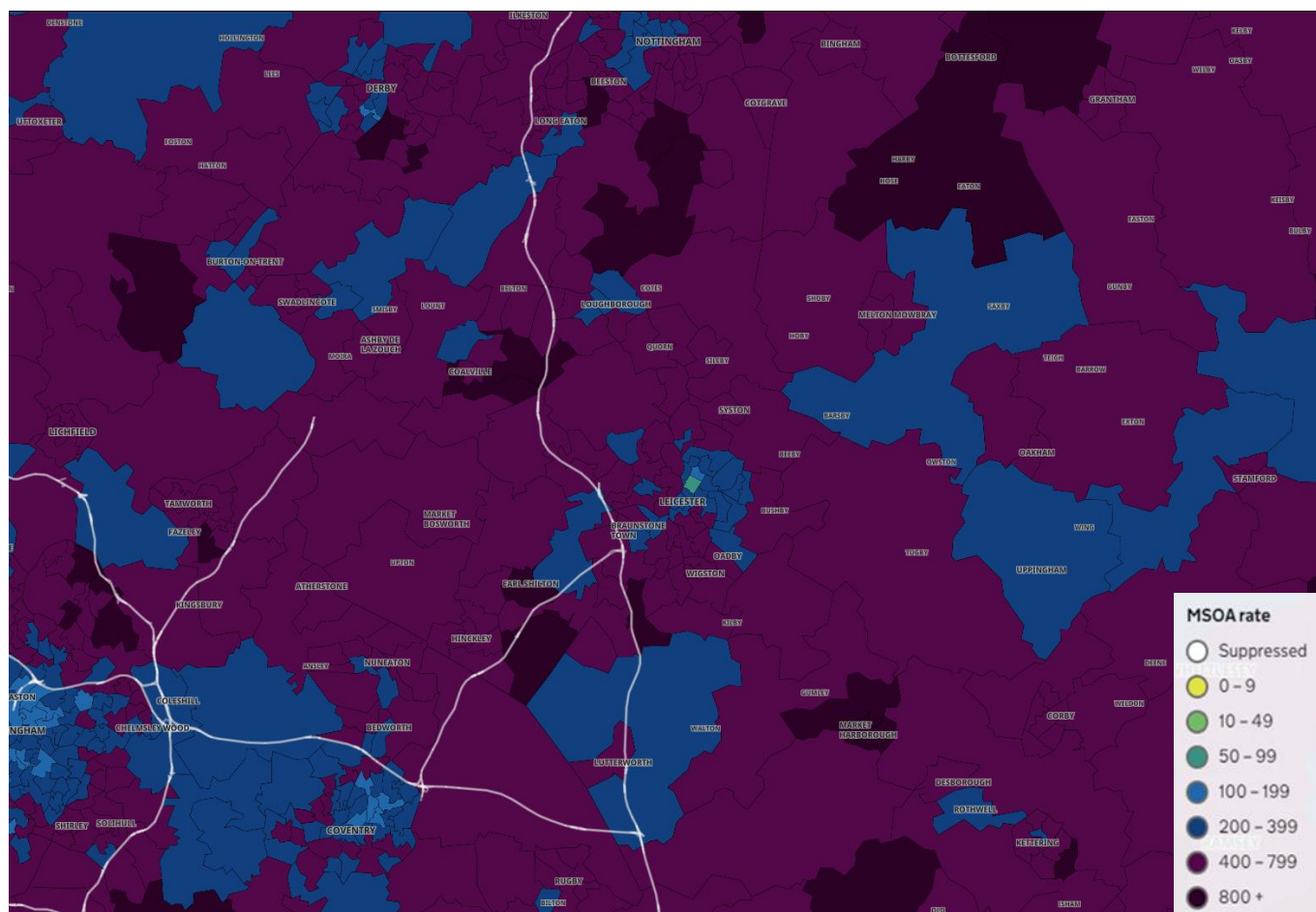
4. Trend in Weekly Incidence Rate (60+) – Leicestershire Districts

- The data for 60+ population show the rate for Leicestershire is 169.9 per 100,000 population, higher than the national rate of 133.8 per 100,000 population. NWL has the highest rate in the county (214.7 per 100,000 population, 59 cases), followed by Blaby (186.1, 50 cases), Harborough (180.5, 49 cases), Melton (166.8, 26 cases), Charnwood (155.4, 69 cases), H&B (154.6, 50 cases) and O&W (120.9, 19 cases). Compared to the previous week, Blaby, Harborough and O&W have increased, Melton has stayed the same, whilst Charnwood, H&B and NWL have decreased.



Source: PHE Power BI Line Lists

5. Weekly Cases by Middle Super Output Area (MSOA)



Source: PHE Coronavirus (COVID-19) in the UK Dashboard

If you require information contained in this leaflet in another version e.g. large print, Braille, tape or alternative language please telephone: 0116 305 6803, Fax: 0116 305 7271 or Minicom: 0116 305 6160.

જો આપ આ માહિતી આપની ભાષામાં સમજવામાં થોડી મદદ ઇચ્છતાં હો તો 0116 305 6803 નંબર પર ફોન કરશો અને અમે આપને મદદ કરવા અવસ્થા કરીશું.

ਜੇਕਰ ਤੁਹਾਨੂੰ ਇਸ ਜਾਣਕਾਰੀ ਨੂੰ ਸਮਝਣ ਵਿਚ ਕੁਝ ਮਦਦ ਚਾਹੀਦੀ ਹੈ ਤਾਂ ਕਿਰਪਾ ਕਰਕੇ 0116 305 6803 ਨੰਬਰ ਤੇ ਫੋਨ ਕਰੋ ਅਤੇ ਅਸੀਂ ਤੁਹਾਡੀ ਮਦਦ ਲਈ ਕਿਸੇ ਦਾ ਪ੍ਰਬੰਧ ਕਰ ਦਵਾਂਗੇ।

এই তথ্য নিজের ভাষায় বুঝার জন্য আপনার যদি কোন সাহায্যের প্রয়োজন হয়, তবে 0116 305 6803 এই নম্বরে ফোন করলে আমরা উপযুক্ত ব্যক্তির ব্যবস্থা করবো।

اگر آپ کو یہ معلومات سمجھنے میں کچھ مدد درکار ہے تو براہ مہربانی اس نمبر پر کال کریں 0116 305 6803 اور ہم آپ کی مدد کے لئے کسی کا انتظام کر دیں گے۔

假如閣下需要幫助，用你的語言去明白這些資訊，請致電 0116 305 6803，我們會安排有關人員為你提供幫助。

Jeżeli potrzebujesz pomocy w zrozumieniu tej informacji w Twoim języku, zadzwoń pod numer 0116 305 6803, a my Ci pomożemy.

13 December 2021

Business Intelligence Service
Chief Executive's Department
Leicestershire County Council
County Hall, Glenfield
Leicester LE3 8RA

Tel 0116 305 6059
Email: Kajal.lad@leics.gov.uk

Produced by the Business Intelligence Service at Leicestershire County Council.

Whilst every effort has been made to ensure the accuracy of the information contained within this report, Leicestershire County Council cannot be held responsible for any errors or omission relating to the data contained within the report.