

COVID-19: Data Update for Leicestershire

Period 24 November 2021 to 30 November 2021

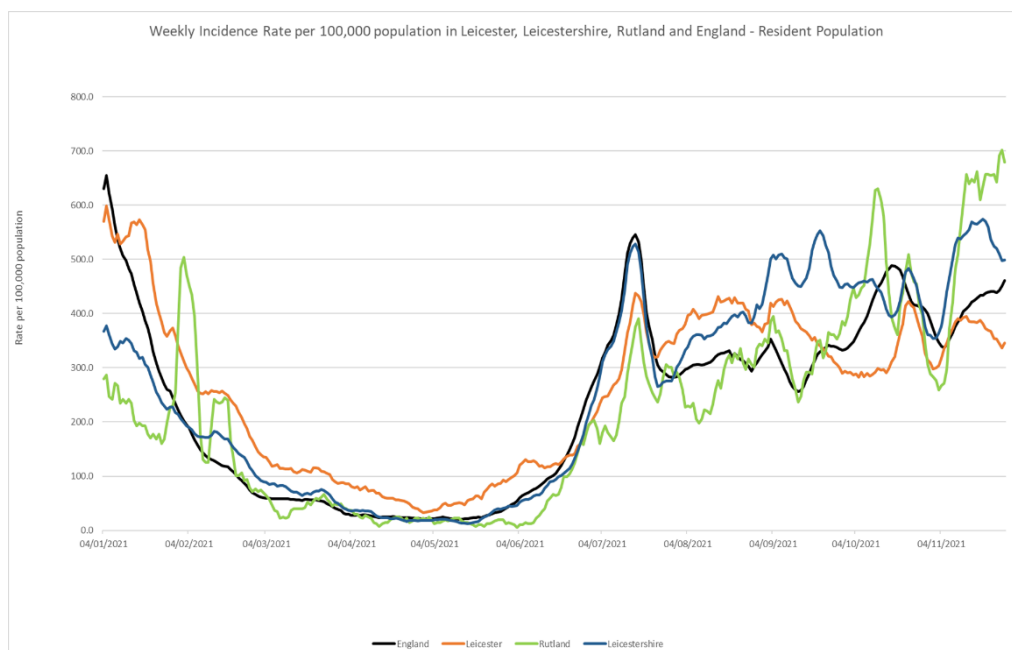
Headline Summary

1. Position Statement from the Director of Public Health for Leicestershire

During the last 7 days, rates in Leicestershire have decreased at the same time national rates have marginally increased – this pattern is consistent with last half term. While the highest proportion of cases still remain amongst school age population, the concern over the new Omicron variant has led to an increase in testing rates and subsequent case finding. We are closely monitoring the impact of the new variant and expect case findings of the virus to start to rise again in line with predicted national increases.

2. Trend in Weekly Incidence Rate (All ages) – Leicester, Leicestershire, Rutland and England

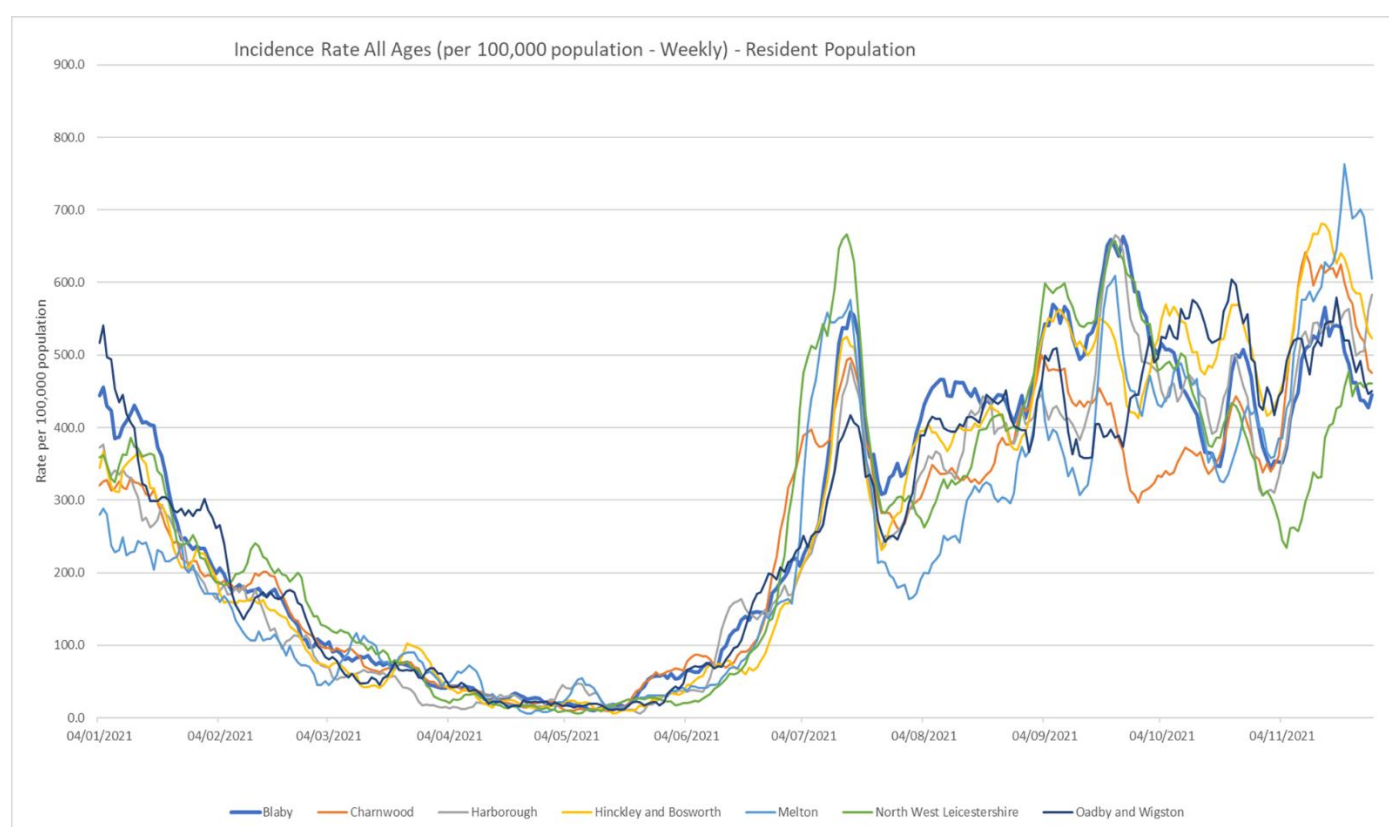
- The national rate has increased from 450.8 (period 23rd November to 29th November) to 461.3 per 100,000 population (period 24th November to 30th November). This latest rate reflects a percentage change increase of 5% compared to the previous 7 day period for England.
- The Leicestershire rate has increased from 497.8 (period 23rd November to 29th November) to 498.4 per 100,000 population (period 24th November to 30th November). This latest rate reflects a percentage change decrease of 13% compared to the previous 7 day period for Leicestershire. The rate in Leicestershire is higher than the national average.
- The rate for Leicester City stands at 345.7 per 100,000 population and is below the national average. The rate for Rutland stands at 679.4 per 100,000 population and is above the national average.



3. Trend in Weekly Incidence Rate (all ages) – Leicestershire Districts

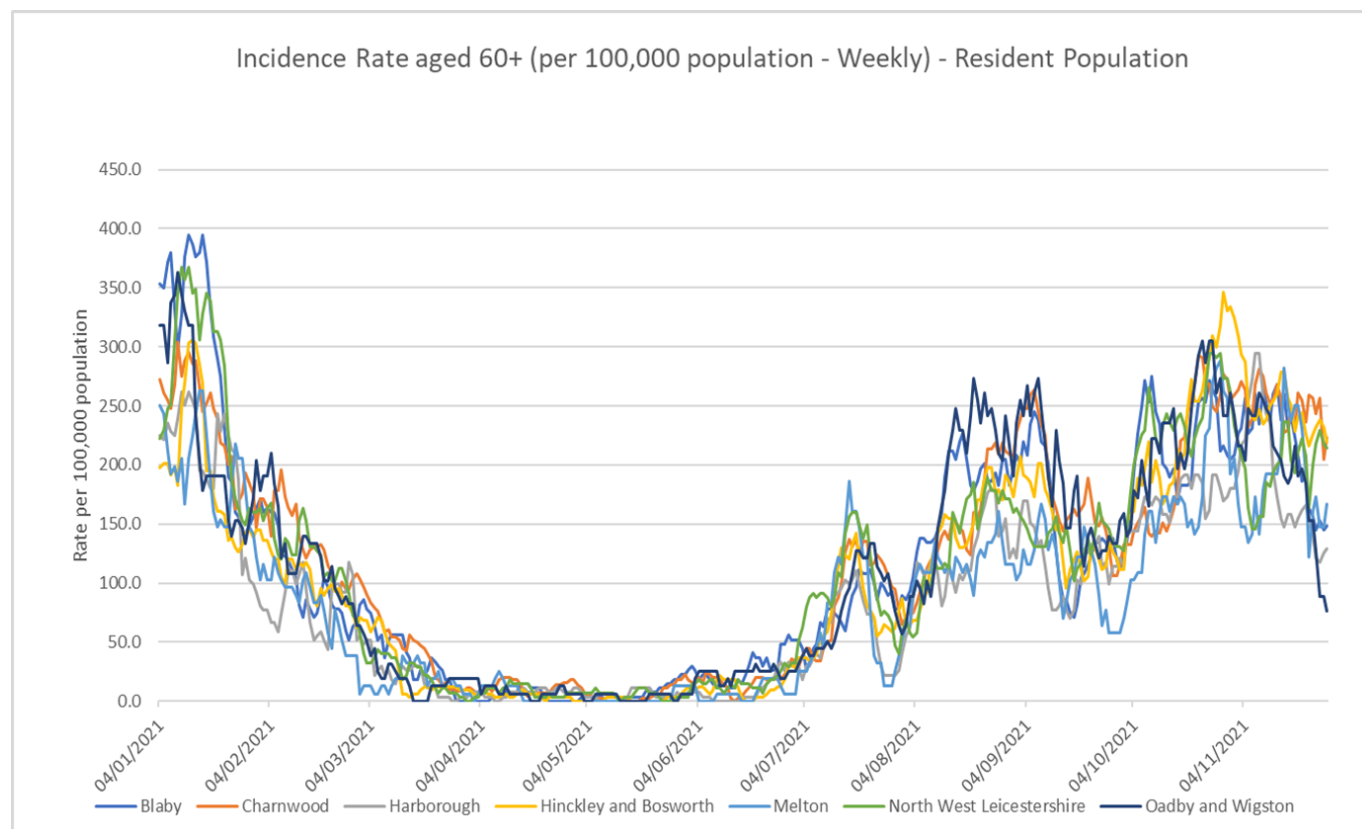
- Melton has the highest rate in the county (605.1 per 100,000 population, 311 cases), followed by Harborough (583.0 per 100,000, 557 cases), H&B (523.5 per 100,000, 595 cases), Charnwood (475.5 per 100,000, 896 cases), NWL (460.8 per 100,000, 483 cases), O&W (450.2 per 100,000, 258 cases) and Blaby (445.3 per 100,000 population, 454 cases). Compared to the previous week, most districts (apart from NWL and Harborough) have decreased unlike nationally.

Indicator	Blaby	Charnwood	Harborough	Hinckley & Bosworth	Melton	NW Leicestershire	Oadby and Wigston	Leicestershire	Rutland	England
Weekly incidence rate per 100,000 population (All Ages)	445.3	475.5	583.0	523.5	605.1	460.8	450.2	498.4	679.4	461.3
Weekly count of cases (All Ages)	454	896	557	595	311	483	258	3554	275	260894
Percentage change in cases from previous 7 days (All Ages)	-12%	-21%	4%	-17%	-21%	1%	-13%	-13%	3%	5%
Weekly incidence rate per 100,000 population (60+)	148.8	223.0	128.9	219.5	166.8	214.7	76.3	180.4	130.5	134.9
Weekly count of cases (60+)	40	99	35	71	26	59	12	342	17	1526



4. Trend in Weekly Incidence Rate (60+) – Leicestershire Districts

- The data for 60+ population show the rate for Leicestershire is 180.4 per 100,000 population, higher than the national rate of 134.9 per 100,000 population. Charnwood has the highest rate in the county (223.0 per 100,000 population, 99 cases), followed by H&B (219.5, 71 cases), NWL (214.7, 59 cases), Melton (166.8, 26 cases), Blaby (148.8, 40 cases), Harborough (128.9, 35 cases) and O&W (76.3, 12 cases). Compared to the previous week, all districts have decreased like nationally.



Source: PHE Power BI Line Lists

5. Weekly Cases by Middle Super Output Area (MSOA)



Source: PHE Coronavirus (COVID-19) in the UK Dashboard

If you require information contained in this leaflet in another version e.g. large print, Braille, tape or alternative language please telephone: 0116 305 6803, Fax: 0116 305 7271 or Minicom: 0116 305 6160.

જો આપ આ માહિતી આપની ભાષામાં સમજવામાં થોડી મદદ ઇચ્છતાં હો તો 0116 305 6803 નંબર પર ફોન કરશો અને અમે આપને મદદ કરવા અવસ્થા કરીશું.

ਜੇਕਰ ਤੁਹਾਨੂੰ ਇਸ ਜਾਣਕਾਰੀ ਨੂੰ ਸਮਝਣ ਵਿਚ ਕੁਝ ਮਦਦ ਚਾਹੀਦੀ ਹੈ ਤਾਂ ਕਿਰਪਾ ਕਰਕੇ 0116 305 6803 ਨੰਬਰ ਤੇ ਫੋਨ ਕਰੋ ਅਤੇ ਅਸੀਂ ਤੁਹਾਡੀ ਮਦਦ ਲਈ ਕਿਸੇ ਦਾ ਪ੍ਰਬੰਧ ਕਰ ਦਵਾਂਗੇ।

এই তথ্য নিজের ভাষায় বুঝার জন্য আপনার যদি কোন সাহায্যের প্রয়োজন হয়, তবে 0116 305 6803 এই নম্বরে ফোন করলে আমরা উপযুক্ত ব্যক্তির ব্যবস্থা করবো।

اگر آپ کو یہ معلومات سمجھنے میں کچھ مدد درکار ہے تو براہ مہربانی اس نمبر پر کال کریں 0116 305 6803 اور ہم آپ کی مدد کے لئے کسی کا انتظام کر دیں گے۔

假如閣下需要幫助，用你的語言去明白這些資訊，請致電 0116 305 6803，我們會安排有關人員為你提供幫助。

Jeżeli potrzebujesz pomocy w zrozumieniu tej informacji w Twoim języku, zadzwoń pod numer 0116 305 6803, a my Ci pomożemy.

6 December 2021

Business Intelligence Service
Chief Executive's Department
Leicestershire County Council
County Hall, Glenfield
Leicester LE3 8RA

Tel 0116 305 6059
Email: Kajal.lad@leics.gov.uk

Produced by the Business Intelligence Service at Leicestershire County Council.

Whilst every effort has been made to ensure the accuracy of the information contained within this report, Leicestershire County Council cannot be held responsible for any errors or omission relating to the data contained within the report.