

# COVID-19: Data Update for Leicestershire

Period 3 February 2021 to 9 February 2021

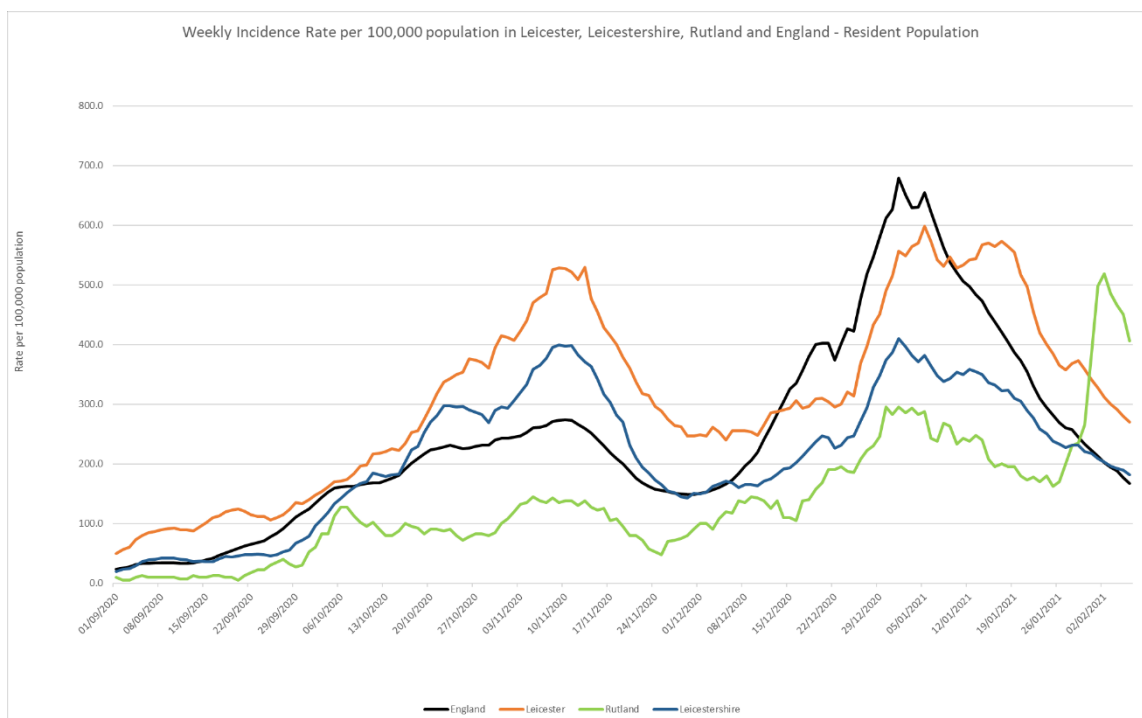
## Headline Summary

### 1. Position Statement from the Director of Public Health for Leicestershire

The trend seen in the last few weeks continues. The Leicestershire rate has now been falling at somewhere around 15% a week for a number of weeks. It remains the case that, although this is welcome, the falls seen in Leicestershire and across the east and West Midlands, have been below the decreases seen in the national average.

### 2. Trend in Weekly Incidence Rate (All ages) – Leicester, Leicestershire, Rutland and England

- The national rate has decreased from 177.2 (period 2nd Feb to 8th Feb) to 165.7 per 100,000 population (period 3rd Feb to 9th Feb). This latest rate reflects a percentage change decrease of 28% compared to the previous 7 day period for England.
- The Leicestershire rate has decreased from 189.2 (period 2nd Feb to 8th Feb) to 181.5 per 100,000 population (period 3rd Feb to 9th Feb). This latest rate reflects a percentage change decrease of 18% compared to the previous 7 day period for Leicestershire. The rate in Leicestershire is higher than the national average.
- The rate for Leicester City stands at 269.9 per 100,000 population and is above the national average. The rate for Rutland stands at 405.7 per 100,000 population and is above the national average.

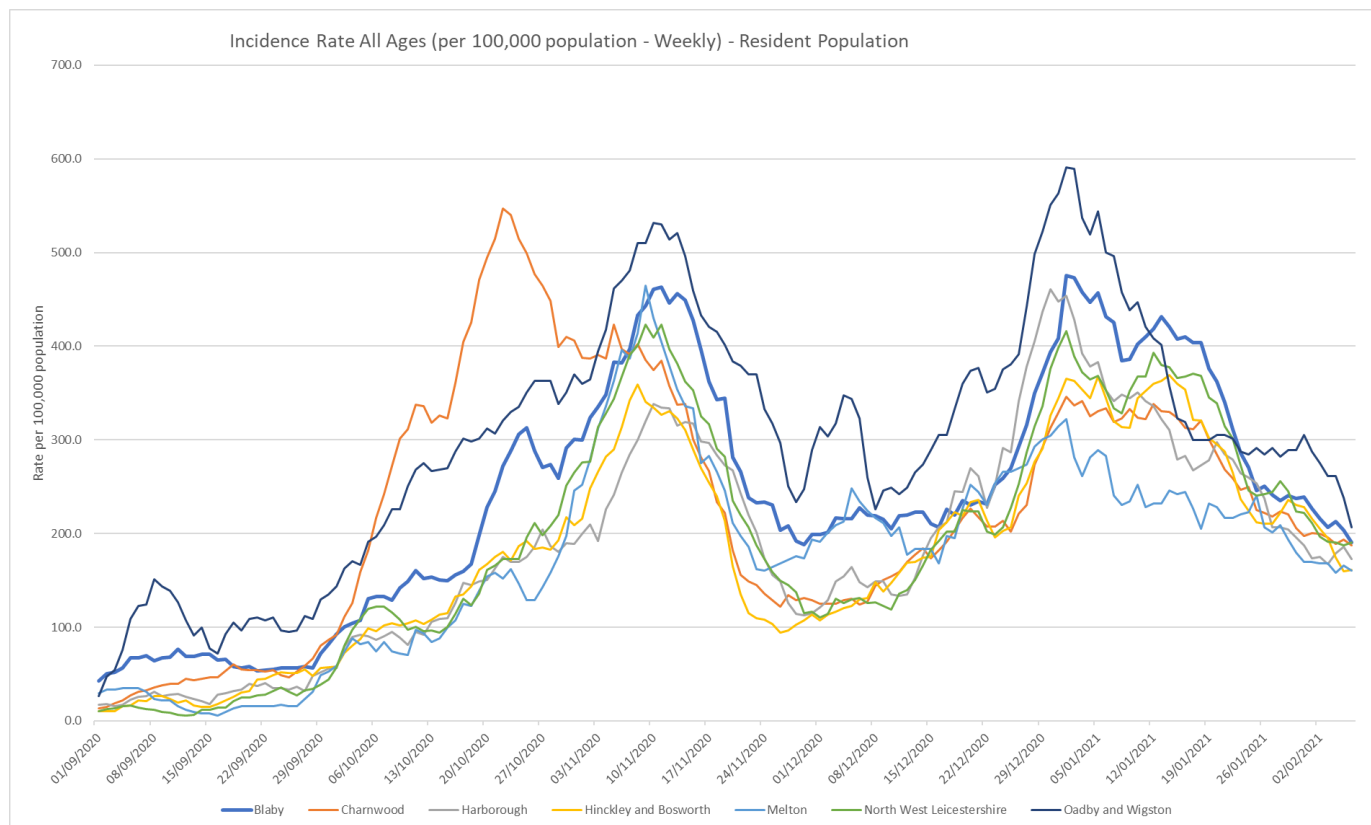


Source: PHE Power BI Line Lists

### 3. Trend in Weekly Incidence Rate (all ages) – Leicestershire Districts

- O&W has the highest rate in the County (207.0 per 100,000 population) followed by Blaby (190.1), NWL (190.1), Charnwood (187.2), Harborough (172.7), H&B (160.9) and Melton (160.1). Compared to the previous week, all areas in the county have decreased like nationally.

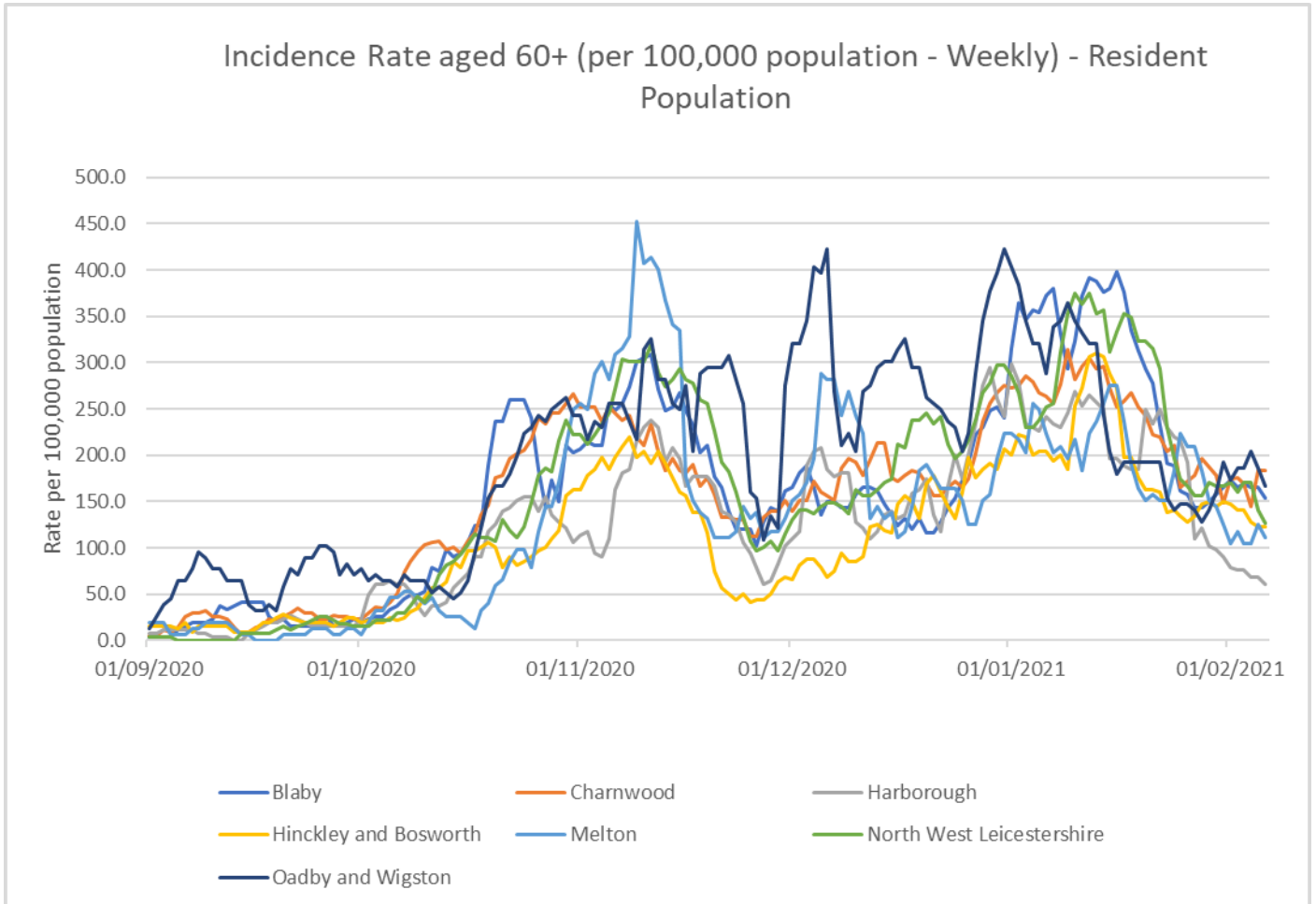
Indicator	Blaby	Charnwood	Harborough	Hinckley & Bosworth	Melton	NW Leicestershire	Oadby and Wigston	Leicestershire	England
Weekly incidence rate per 100,000 population (All Ages)	190.1	187.2	172.7	160.9	160.1	190.1	207.0	181.5	167.5
Weekly count of cases (All Ages)	193	348	162	182	82	197	118	1282	94289
Percentage change in cases from previous 7 days (All Ages)	-20%	-9%	-12%	-30%	-11%	-15%	-28%	-18%	-28%
Weekly incidence rate per 100,000 population (60+)	154.2	183.2	60.5	122.1	111.5	126.2	166.4	135.7	127.8
Percentage individuals testing positive (weekly)	9.7%	9.1%	8.4%	7.3%	7.8%	8.9%	6.6%		6.7%



Source: PHE Power BI Line Lists

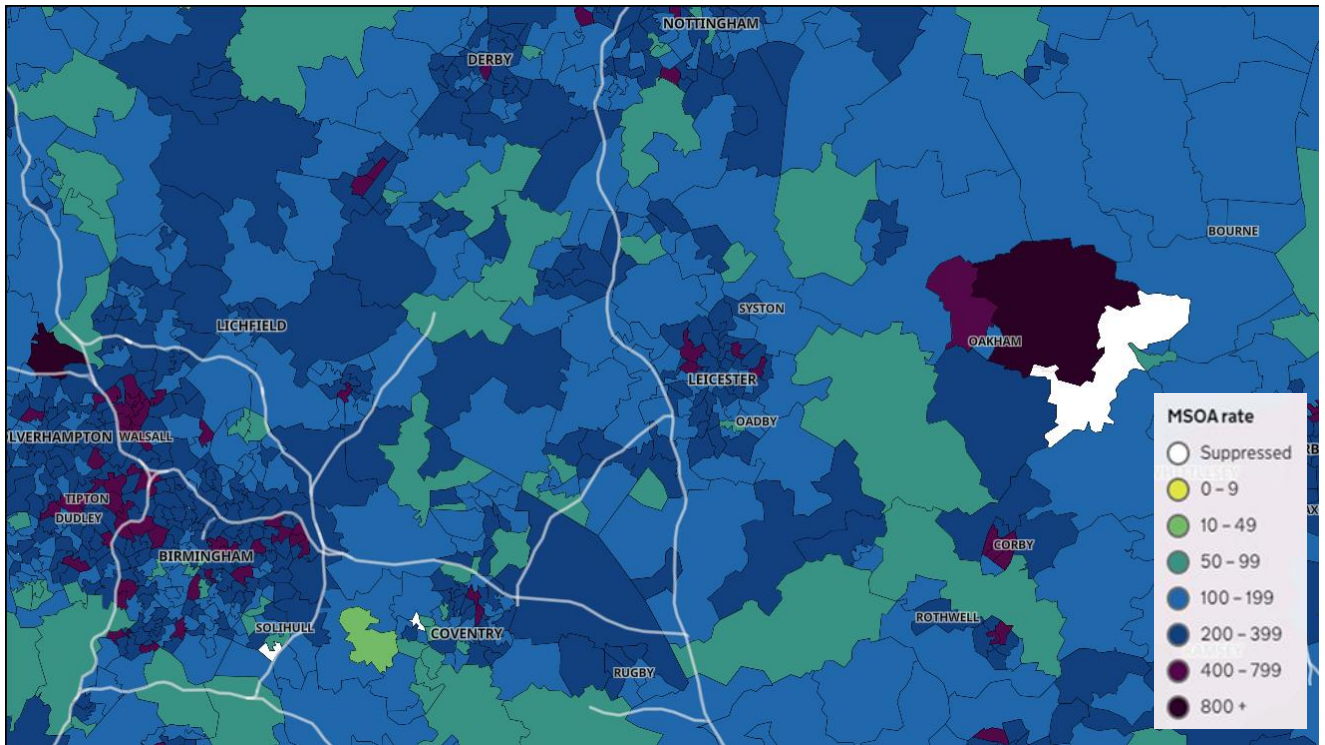
#### 4. Trend in Weekly Incidence Rate (60+) – Leicestershire Districts

- The data for the 60+ population shows the rate for Leicestershire is 135.7 per 100,000 population, higher than the national rate of 127.8 per 100,000 population. Charnwood has the highest rate in the county (183.2 per 100,000 population) followed by O&W (166.4), Blaby (154.2), NWL (126.2), H&B (122.1), Melton (111.5) and Harborough (60.5). Compared to the previous week, most districts (apart from Charnwood and O&W) have decreased like nationally.



Source: PHE Power BI Line Lists

## 5. Weekly Cases by Middle Super Output Area (MSOA)



Source: PHE Coronavirus (COVID-19) in the UK Dashboard

If you require information contained in this leaflet in another version e.g. large print, Braille, tape or alternative language please telephone: 0116 305 6803, Fax: 0116 305 7271 or Minicom: 0116 305 6160.

ਜੇ ਆਪ ਆ ਮਾਭਿੰਨੀ ਆਪਨੀ ਆਖਾਮਾਂ ਸਮਝਵਾਮਾਂ ਥੋੜੀ ਮਦਦ  
ਓਝੜਨਾਂ ਭੋ ਤੋ 0116 305 6803 ਨੰਬਰ ਪਰ ਫ਼ੋਨ ਕਰਓ ਅਤੇ  
ਅਮੇ ਆਪਨੇ ਮਦਦ ਕਰਵਾ ਅਵਸਥਾ ਕਰੀਓ.

ਜੇਕਰ ਤੁਹਾਨੂੰ ਇਸ ਜਾਣਕਾਰੀ ਨੂੰ ਸਮਝਣ ਵਿਚ ਕੁਝ ਮਦਦ ਚਾਹੀਦੀ  
ਹੈ ਤਾਂ ਕਿਰਪਾ ਕਰਕੇ 0116 305 6803 ਨੰਬਰ ਤੇ ਫ਼ੋਨ ਕਰੋ ਅਤੇ  
ਅਸੀਂ ਤੁਹਾਡੀ ਮਦਦ ਲਈ ਕਿਸੇ ਦਾ ਪ੍ਰਬੰਧ ਕਰ ਦਵਾਂਗੇ।

এই তথ্য নিজের ভাষায় বুঝার জন্য আপনার যদি কোন  
সাহায্যের প্রয়োজন হয়, তবে 0116 305 6803 এই নম্বরে  
ফোন করলে আমরা উপযুক্ত ব্যক্তির ব্যবস্থা করবো।

اگر آپ کو یہ معلومات سمجھنے میں کچھ مدد درکار ہے تو براہ مہربانی اس نمبر پر کال کریں  
0116 305 6803 اور ہم آپ کی مدد کے لئے کسی کا انتظام کر دیں گے۔

假如閣下需要幫助，用你的語言去明白這些資訊，  
請致電 0116 305 6803，我們會安排有關人員為你  
提供幫助。

Jeżeli potrzebujesz pomocy w zrozumieniu tej informacji  
w Twoim języku, zadzwoń pod numer 0116 305 6803,  
a my Ci dopomozemy.

**15 February 2021**

Strategic Business Intelligence Team  
Business Intelligence  
Chief Executive's Department  
Leicestershire County Council  
County Hall, Glenfield  
Leicester LE3 8RA

Tel: 0116 305 6059  
Email: [Kajal.lad@leics.gov.uk](mailto:Kajal.lad@leics.gov.uk)

Produced by the Strategic Business Intelligence Team at Leicestershire County Council.

Whilst every effort has been made to ensure the accuracy of the information contained within this report, Leicestershire County Council cannot be held responsible for any errors or omission relating to the data contained within the report.