

COVID-19:

Data Update for Leicestershire

Week 5 of 2021

16th February 2021

Strategic Business Intelligence Team
Business Intelligence
Chief Executive's Department
Leicestershire County Council
County Hall, Glenfield
Leicester LE3 8RA

Tel 0116 305 6059
Email: kajal.lad@leics.gov.uk

Produced by the Strategic Business Intelligence Team at Leicestershire County Council.

Whilst every effort has been made to ensure the accuracy of the information contained within this report, Leicestershire County Council cannot be held responsible for any errors or omission relating to the data contained within the report.

What have we learnt from the newly released Covid-19 data?

A series of publicly available dashboards examining Covid-19 cases, deaths involving Covid-19 and a district summary are available at the below links. A summary narrative to support the data in these dashboards then follows.

- [Deaths involving Covid-19](#)
- [Covid-19 Summary at District Level](#)
- [PHE Weekly Covid-19 Cases](#)

1. 54 deaths¹ involving Covid-19 were recorded in Leicestershire in the last week

- As of week 5 2021 (up to 5th February), there have been a total of 1,303 deaths in Leicestershire. The number of weekly counts of deaths has decreased from 67 deaths in week 4 of 2021 to 54 deaths in week 5 of 2021.
- Of all deaths involving Covid-19 in Leicestershire, 856 (65.7%) were in hospital and 357 (27.4%) were in a care home.
- In week 5 in Leicestershire, there were 40 deaths in hospital, 11 deaths in a care home and three deaths in 'other settings'.

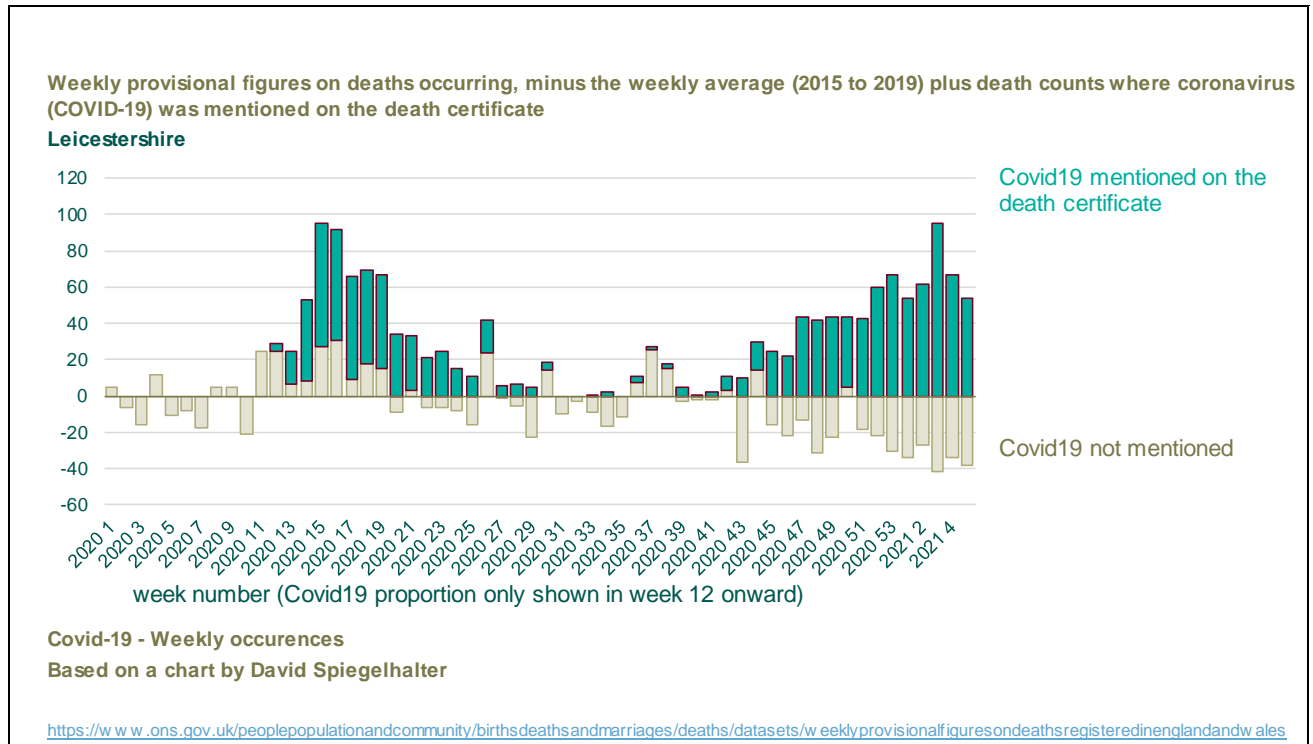
¹ Death counts are based on death occurrences. The death is counted as involving Covid-19 if Covid-19 was mentioned on the death certificate. Please note, Covid-19 may not have been confirmed by a test. Source: [Office for National Statistics](#) (2019)

Deaths (numbers) by local authority and place of death, for deaths that occurred up to 5th February but were registered up to 13th February.

	Care Home		Elsewhere		Home		Hospice		Hospital		Total				Population
	Count	Rate	Count	Rate	Count	Rate	Count	Rate	Count	Rate	Count	Rate	LCI	UCI	
Blaby	41	40.8	5	5.0	9	9.0	1	1.0	131	130.5	187	186.2	160.5	214.9	100421
Charnwood	80	43.8	4	2.2	14	7.7	5	2.7	206	112.8	309	169.2	150.8	189.1	182643
Harborough	50	54.1	0	0.0	8	8.6	2	2.2	87	94.1	147	158.9	134.3	186.8	92499
H&B	56	49.8	0	0.0	10	8.9	5	4.4	129	114.7	200	177.9	154.1	204.3	112423
Melton	42	82.2	1	2.0	5	9.8	1	2.0	49	95.9	98	191.8	155.7	233.7	51100
NWLeics	44	43.1	2	2.0	10	9.8	3	2.9	144	141.0	203	198.8	172.4	228.1	102126
O&W	44	77.1	2	3.5	3	5.3	0	0.0	110	192.8	159	278.7	237.0	325.5	57056
Leicestershire	357	51.1	14	2.0	59	8.4	17	2.4	856	122.6	1303	186.6	176.6	197.0	698268
Rutland	23	57.9	0	0.0	4	10.1	2	5.0	27	68.0	56	141.1	106.6	183.2	39697
Leicester City	123	34.6	21	5.9	52	14.6	2	0.6	516	145.3	714	201.0	186.5	216.3	355218
LLR	503	46.0	35	3.2	115	10.5	21	1.9	1399	128.0	2073	189.6	181.6	198.0	1093183

2. 15 excess deaths were recorded in the last week in Leicestershire

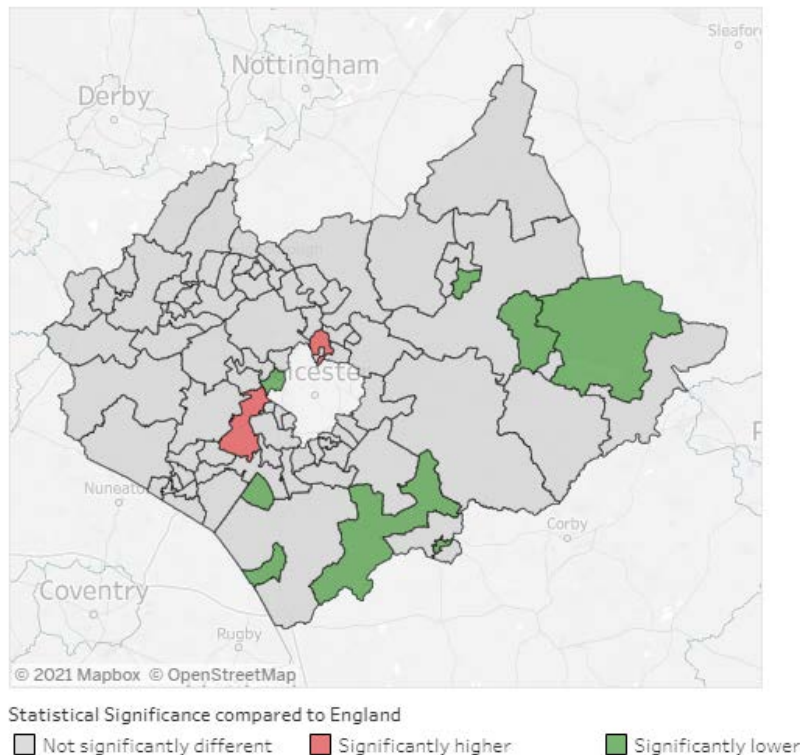
- Counts of excess deaths in Leicestershire have fluctuated over the previous ten weeks. There has been a decrease in all deaths seen in week 5 2021. The latest figures from ONS show that 153 deaths occurred in Leicestershire in week 5 of 2021. There were 15 excess deaths reported in the last week.
- The latest weeks data shows that there were 54 deaths that mentioned Covid-19 on the death certificate in week 5.



3. One area in Blaby and one area in Charnwood has a significantly higher percentage of deaths involving Covid-19 than the national percentage

- The map below examines the statistical significance compared to England, of the percentage of deaths involving Covid-19 by Middle Layer Super Output Area (MSOA) in Leicestershire and Rutland. These deaths occurred between 1st March and 31st December 2020.
- Kirby Muxloe and Thurlaston in Blaby recorded 25 deaths involving Covid-19 in this time period, this represented 27.8% of all deaths. Birstall Wanlip & Riverside in Charnwood recorded 20 deaths involving Covid-19 which represented 22.2% of all deaths.
- Nationally, deaths involving Covid-19 made up under a fifth (14.5%) of all deaths.
- Eight MSOAs in Leicestershire and Rutland have a significantly lower percentage of deaths involving Covid-19 compared to England. These are:
 - Glenfield in Blaby (6, 6.7%)
 - Melton Mowbray South in Melton (4, 5.6%)
 - Fleckney, Kilworth & Foxton in Harborough (5, 5.6%)
 - Market Harborough Central in Harborough (4, 5.1%)
 - Lutterworth in Harborough (5, 5.1%)
 - Oakham West, Langham & Whissendine in Rutland (3, 4.1%)
 - Broughton Astley in Harborough (2, 3.1%)
 - Market Overton, Cottesmore & Empingham in Rutland (0, 0.0%)
- Further data examining deaths involving Covid-19 by local area is available in the dashboard available at [this link](#).

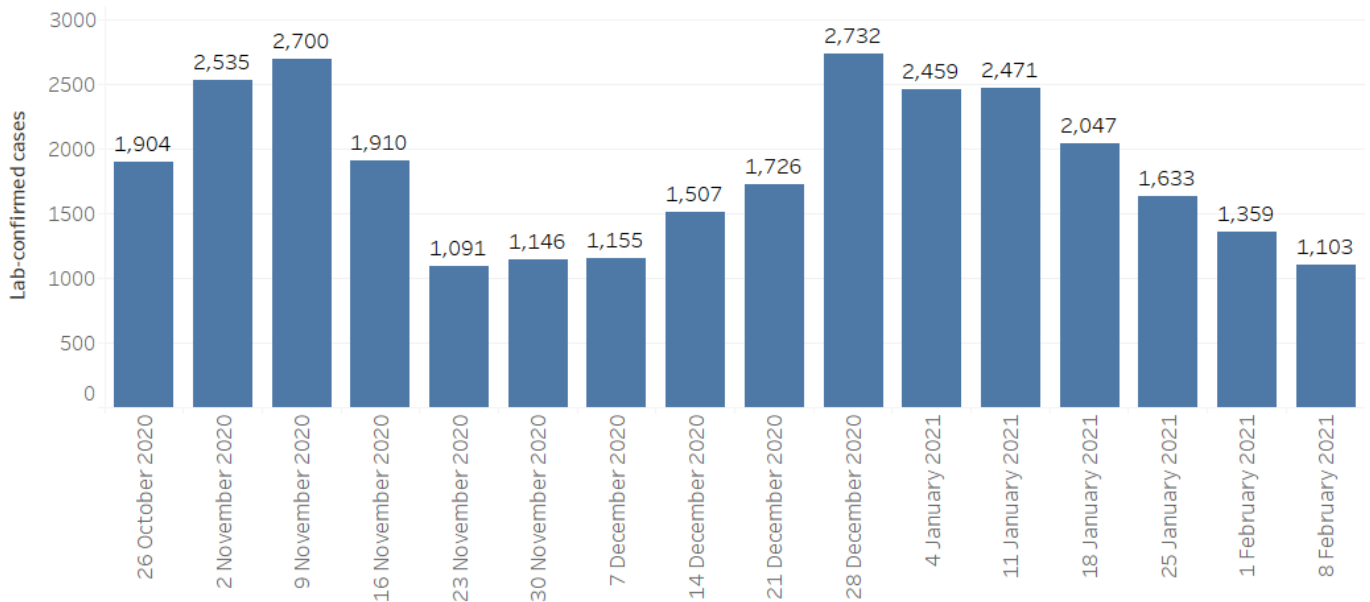
Statistical Significance compared to England of the deaths involving Covid-19 by Middle Layer Super Output Area, Leicestershire and Rutland, deaths occurring between 1st March 2020 and 31st December 2020.



4. Weekly counts of cases have decreased in the past week in Leicestershire

NOTE: On 16th November 2020, Public Health England updated the way it records the location of people who test positive or negative for Covid-19. It now prioritises addresses given at the point of testing over the details registered on a patient's NHS Summary Care Record. This better reflects the distribution of cases and testing. However, it may give rise to differences in previously reported numbers of cases and rates in some areas. The change has been retrospectively applied to tests carried out from 1st September 2020, and data reports were updated to reflect this change on 16th November 2020.

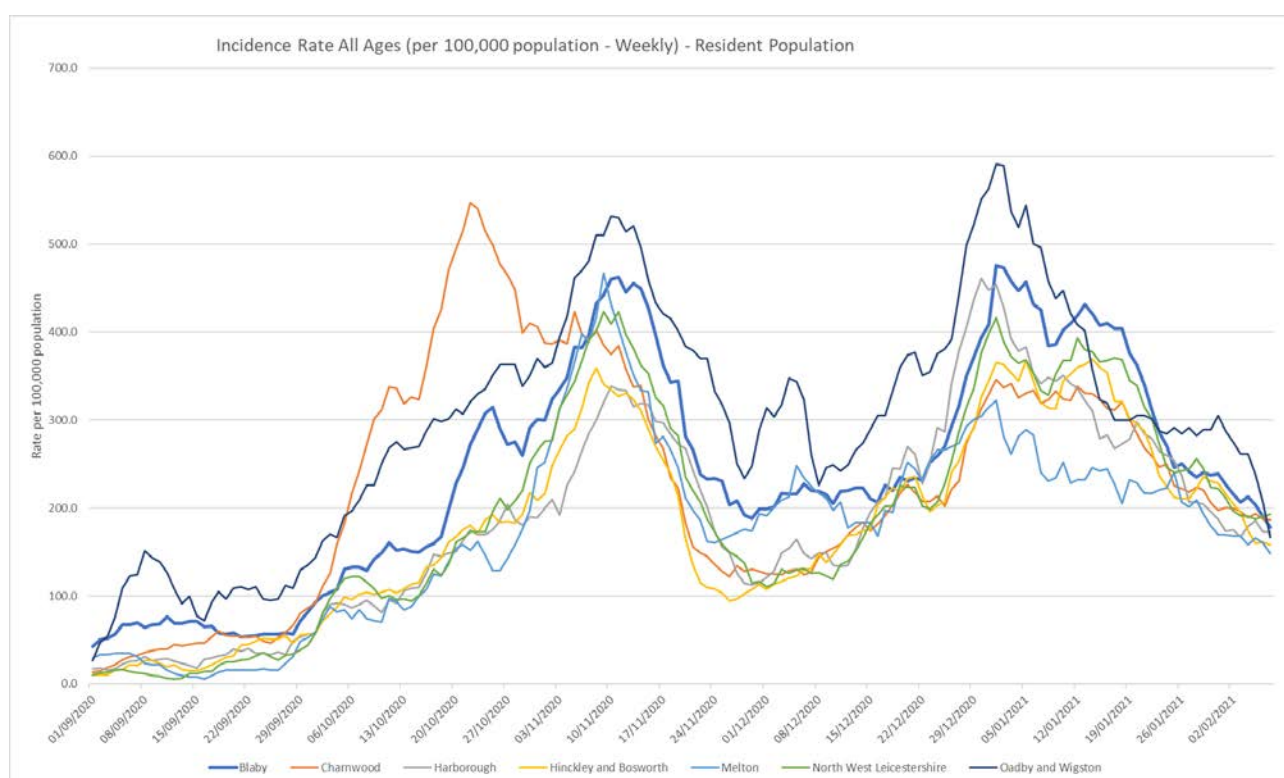
- As of 14th February, Leicestershire has recorded a total of 39,305 lab-confirmed cases of Covid-19. This data relates to pillar 1 and 2 cases.
- Throughout September and October to the second week of November the weekly counts of cases had shown an increasing trend in Leicestershire. For the two weeks following this, the counts of cases decreased. Between then and the end of December the case count increased, since then the weekly counts of cases have shown a decreasing trend.
- The latest weekly data shows 1,103 cases have been confirmed in Leicestershire in the last week. This count has decreased compared to the previous week where 1,359 cases were confirmed.



5. North West Leicestershire has the highest weekly incidence rate of Covid-19 cases for people of all ages in the county

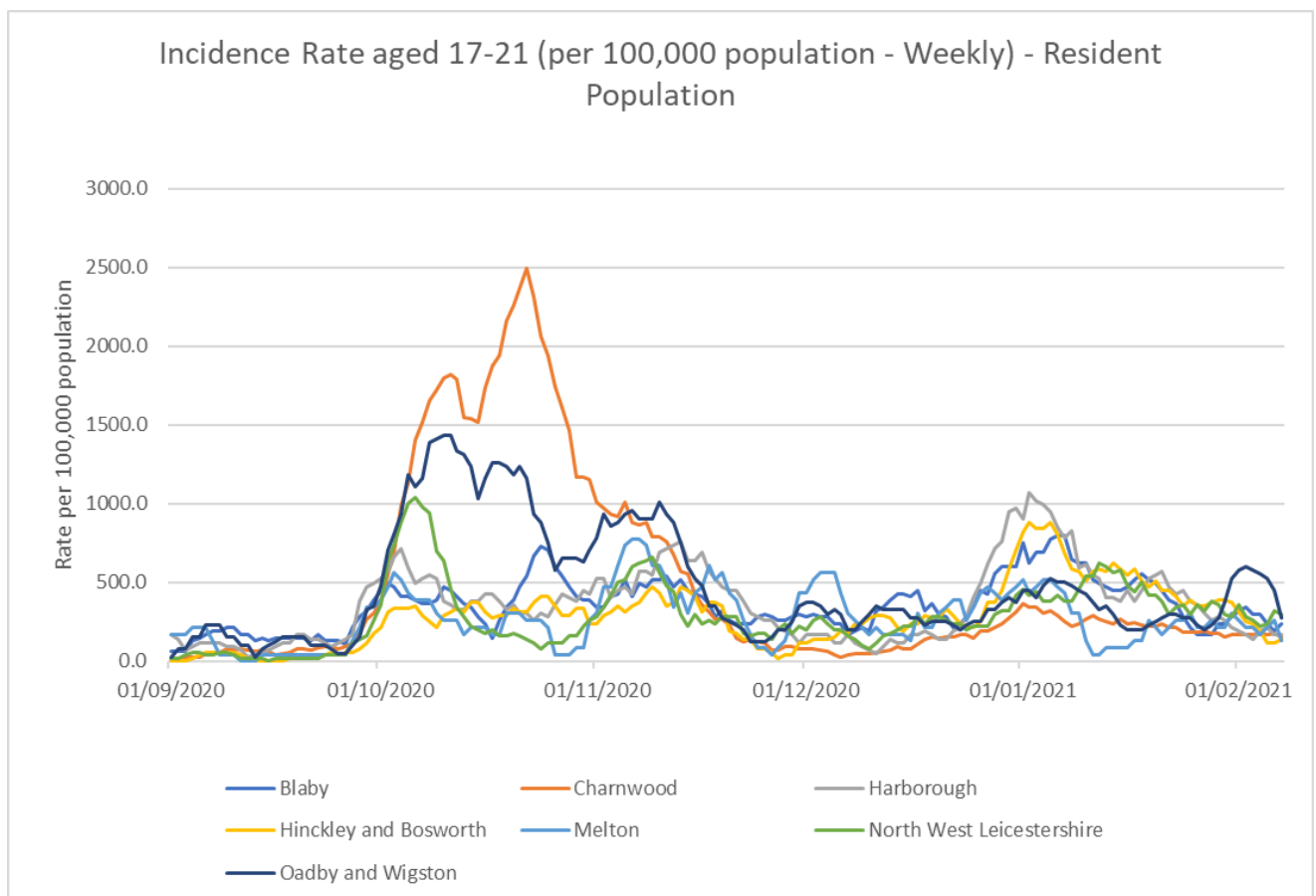
NOTE: On 16th November 2020, Public Health England updated the way it records the location of people who test positive or negative for Covid-19. It now prioritises addresses given at the point of testing over the details registered on a patient's NHS Summary Care Record. This better reflects the distribution of cases and testing. However, it may give rise to differences in previously reported numbers of cases and rates in some areas. The change has been retrospectively applied to tests carried out from 1st September 2020, and data reports were updated to reflect this change on 16th November 2020.

- The incidence rate for Covid-19 cases in Leicestershire had shown an increasing trend from mid-September to the second week of November. Throughout the remainder of November, the incidence rate in Leicestershire had shown a declining trend for people of all ages, but then increased throughout December. Since the beginning of January, the incidence rate in Leicestershire has shown a declining trend. The incidence rate in Leicestershire is higher (175.6 per 100,000 population) than the national rate (157.5 per 100,000 population) as of 7th February 2021.
- The latest weekly incidence rates of Covid-19 cases for people of all ages (as of 7th February) show that the following area rates in Leicestershire are higher than the national rate (157.5 per 100,000 population):
 - North West Leicestershire; 193.0 per 100,000 (200 cases)
 - Charnwood; 186.7 per 100,000 (347 cases)
 - Blaby; 178.3 per 100,000 (181 cases)
 - Harborough; 172.7 per 100,000 (162 cases)
 - Oadby and Wigston; 166.6 per 100,000 (95 cases)
 - Hinckley and Bosworth; 158.2 per 100,000 (179 cases)
- Melton has a lower incidence rate (148.4 per 100,000) than the national rate for people of all ages. This equates to 76 cases.



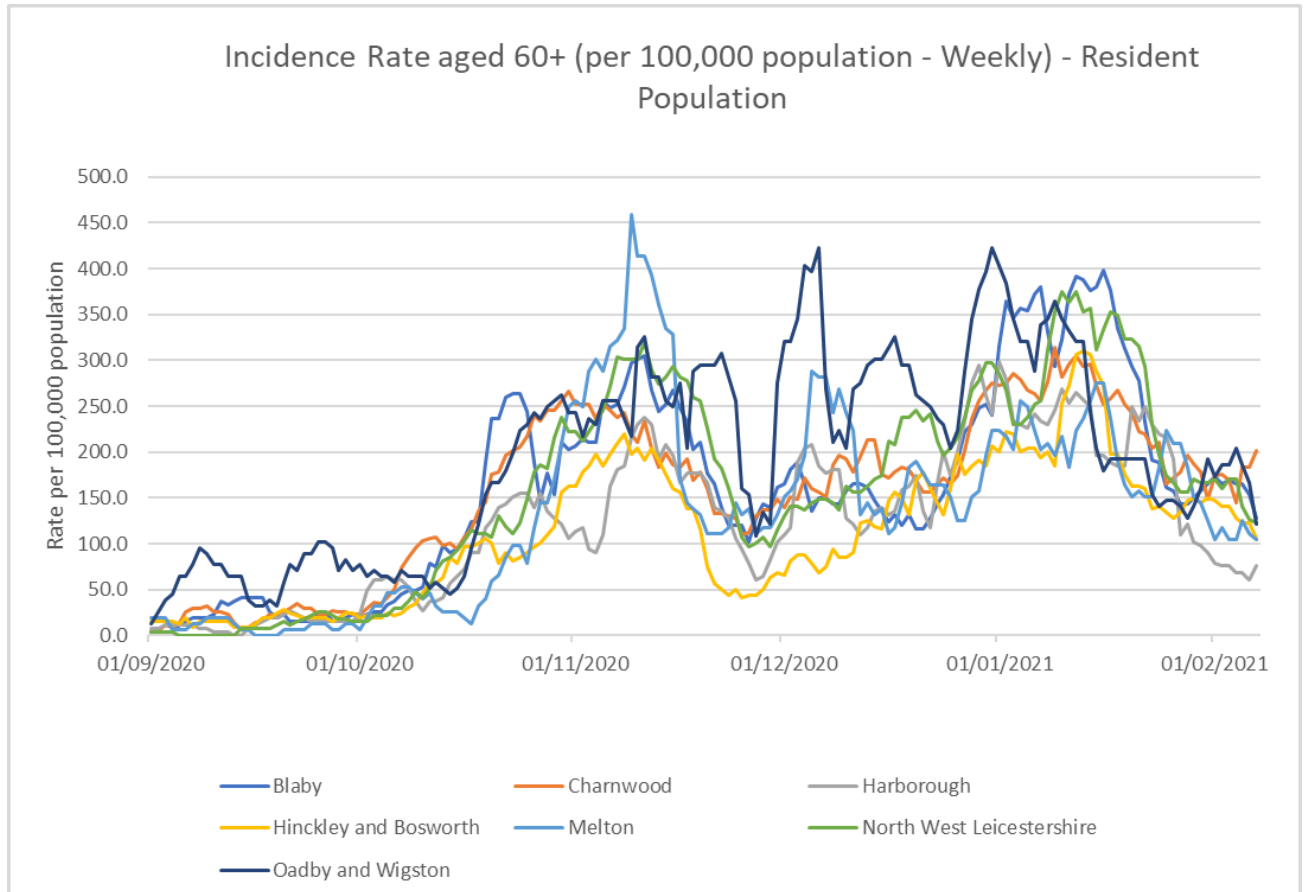
6. North West Leicestershire has the highest weekly incidence rate of Covid-19 cases for people aged 17-21 in the county

- The incidence rate for Covid-19 cases in people aged 17-21 in Leicestershire had been increasing since mid-September and peaked around the 22nd October. From the 22nd October to the end of November, the incidence rate for Covid-19 cases in people aged 17-21 in Leicestershire declined, with the exception of the first week of November where the rate fluctuated. Then through December the rate showed an increasing trend until the 5th of January. Since then the rate has shown a decreasing trend.
- As of the 7th of February, the rate for Leicestershire (190.1 per 100,000 population) is higher than the national rate for this age group (167.3 per 100,000 population).
- The latest weekly incidence rates of Covid-19 cases for people aged 17-21 (as of 7th February) show that the following area rates in Leicestershire are higher than the national rate (167.3 per 100,000 population):
 - North West Leicestershire; 300.4 per 100,000 (15 cases)
 - Oadby and Wigston; 277.2 per 100,000 (11 cases)
 - Blaby; 236.9 per 100,000 (11 cases)
- The following districts have lower rates than the national rate (167.3 per 100,000 population):
 - Harborough; 166.2 per 100,000 (7 cases)
 - Charnwood; 155.4 per 100,000 (27 cases)
 - Hinckley and Bosworth; 137.3 per 100,000 (7 cases)
 - Melton; 129.8 per 100,000 (3 cases)



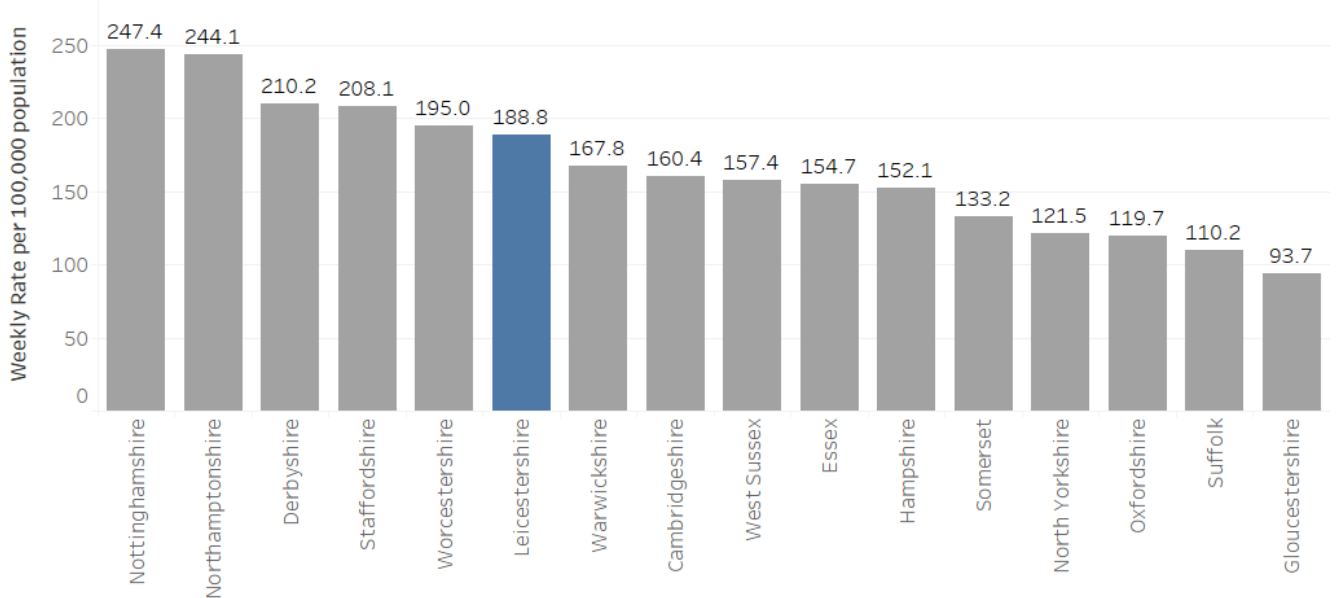
7. Charnwood has the highest weekly incidence rate of Covid-19 cases for people aged 60+ in the county

- The incidence rate for Covid-19 cases in people aged 60+ in Leicestershire had been increasing from the end of September to the 11th of November. From the 11th November to the beginning of December, the rate declined. Since the beginning of December the incidence rate of Covid-19 cases in people aged 60+ in Leicestershire has fluctuated, with the exception of the last week of December where the rate showed an increasing trend. Since the beginning of January the rate showed a declining trend. The rate for Leicestershire (130.8 per 100,000 population) is higher than the national rate (119.6 per 100,000 population) as of 7th February.
- The latest weekly incidence rates of Covid-19 cases for people aged 60+ (as of 7th February) show that the following area rates in Leicestershire are higher than the national rate (119.6 per 100,000):
 - Charnwood; 201.5 per 100,000 (88 cases)
 - Blaby; 127.9 per 100,000 (34 cases)
 - North West Leicestershire; 122.4 per 100,000 (33 cases)
 - Oadby and Wigston; 121.6 per 100,000 (19 cases)
- The following area rates in Leicestershire are lower than the national rate (119.6 per 100,000 population):
 - Hinckley and Bosworth; 106.5 per 100,000 (34 cases)
 - Melton; 105.0 per 100,000 (16 cases)
 - Harborough; 75.6 per 100,000 (20 cases)



8. Leicestershire has seen a decrease in the weekly rate of Covid-19 cases

- There has been a decrease in the weekly rate of Covid-19 cases in Leicestershire from 228.3 (per 100,000 population) in week 4 of 2021 to 188.8 (per 100,000 population) in week 5 of 2021.
- As of week 5 (1st February to 7th February 2021), Leicestershire is ranked 68th (highest) out of 149 upper tier local authorities and ranked the 6th (highest) out of its CIPFA similar areas.



9. The MSOA with the highest count of Covid-19 cases in the last week was Loughborough Lemyngton & Hastings

- Between 1st February and 7th February 2021 (week 5 of 2021), the Middle Super Output Area (MSOA) with the highest count of confirmed cases of Covid-19 was Loughborough Lemyngton & Hastings with 39 reported cases. This was followed by:
 - Market Harborough West, Great Bowden & Lubenham (34)
 - Birstall Wanlip & Riverside (30)
 - Oadby North & East (29), Loughborough Storer & Queen's Park (29), Hugglescote & Bardon Hill (29)
 - Wigston Harcourt & Little Hill (28)
 - Lutterworth (25)
 - Thorpe Astley (24), Shepshed East (24), Fleckney, Kilworth & Foxton (24), Earl Shilton (24)
 - Ibstock & Ellistown (23)
 - Cosby, Croft & Elmesthorpe (22), Blaby Village (22)
 - Coalville (21), Castle Donington (21), Barwell (21)
 - South Wigston (20), Market Bosworth, Barlestone & Sheepy Magna (20), Ashby de la Zouch North (20)
- All other areas recorded less than 20 cases in the last week.
- Areas that recorded between zero and two cases in the last week have been suppressed due to data disclosure and are represented as white in the map below.

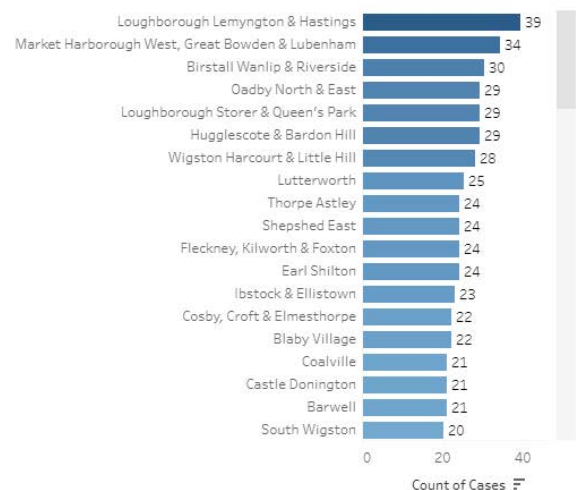
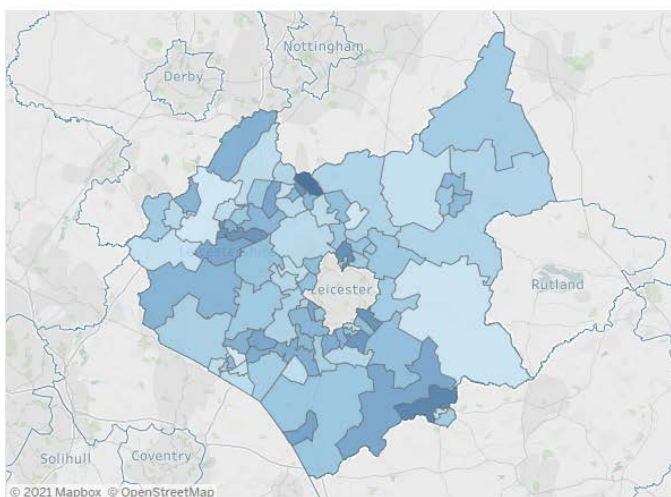
Weekly Counts of Lab-confirmed Covid-19 cases by Middle Layer Super Output Area, Leicester, Leicestershire and Rutland



As of: Local Authority:



Week 5 of 2021



10. District Level Summary

- **Oadby & Wigston** continues to have the highest rate of Covid-19 cases and deaths in the county. The rate of cumulative cases is significantly higher in comparison to the England average.
- From the beginning of September to the 9th November, the weekly counts of cases had shown an increasing trend in Oadby and Wigston. Between the w/c 9th November and the w/c 28th December, the weekly counts of cases fluctuated. Since then, the weekly counts of cases have decreased each week in Oadby and Wigston.
- The weekly counts of cases have decreased from 149 in w/c 1st February to 66 in w/c 8th February.
- The latest weeks data on death occurrences shows eight deaths involving Covid-19 were recorded in Oadby & Wigston in week 5 of 2021; seven deaths occurred in a hospital and one death occurred in a care home.

- **North West Leicestershire** has the fourth highest rate of Covid-19 cases and the second highest rate of deaths in the county. The rate of cumulative cases is significantly lower than the England average.
- From early September to the 9th November an increasing trend in the weekly counts of cases had been witnessed in North West Leicestershire. Following this, the weekly counts of cases decreased each week for four weeks. The weekly counts of cases then increased for three weeks, before showing a declining trend throughout January.
- The latest weekly counts of cases have increased from 197 in w/c 1st February to 198 in w/c 8th February.
- The latest weekly count of deaths involving Covid-19 shows that eight deaths occurred in North West Leicestershire in week 5 of 2021; seven deaths occurred in a hospital and one death occurred in a care home.

- **Melton** has the lowest rate of Covid-19 cases and the third highest rate of deaths in the county. The rate of cumulative cases is significantly lower than the England average.
- From mid-September, the weekly counts of cases had been increasing week on week in Melton, showing a peak around the 9th of November, a second peak was witnessed around 28th of December. Since then, the weekly counts of cases have shown a declining trend.
- The latest weekly counts of cases have decreased from 81 in w/c 1st February to 54 in w/c 8th February.
- The latest weekly count of deaths involving Covid-19 shows that four deaths occurred in Melton in week 5 of 2021; three deaths occurred in a hospital and one death occurred in 'other settings'.

- **Blaby** has the second highest rate of Covid-19 cases in the county and the fourth highest rate of deaths. The rate of cumulative cases is not significantly different to the England average.
- From mid-September, the weekly counts of cases in Blaby had shown an increasing trend, with a peak around the 9th of November. From then, the weekly counts of cases have fluctuated, with the exception of the last three weeks of December and the first week of January where the weekly counts of cases increased each week. Since the 4th of January, the weekly counts of cases have shown a declining trend in Blaby.
- The latest weekly counts of cases have decreased from 216 in w/c 1st February to 158 in w/c 8th February.
- The latest weeks data shows seven deaths involving Covid-19 were recorded in Blaby in week 5 of 2021; six deaths occurred in a hospital and one death occurred in 'other settings'.

- **Hinckley & Bosworth** has the second lowest rate of Covid-19 cases and third lowest rate of deaths in the county. The rate of cumulative cases is significantly lower compared to the England average.
- From mid-September to the 9th of November, the weekly counts of cases had increased each week in Hinckley and Bosworth. The weekly counts of cases had fluctuated from November 9th to January 11th but have since decreased week on week.
- The latest weekly counts of cases have decreased from 197 in w/c 1st February to 169 in w/c 8th February.
- The latest weeks data shows nine deaths involving Covid-19 were recorded in Hinckley & Bosworth in week 5 of 2021; six deaths occurred in a hospital and three deaths occurred in a care home.

- **Charnwood** has the third highest rate of Covid-19 cases and the second lowest rate of deaths in the county. The rate of cumulative cases is significantly lower in comparison to the England average.
- The weekly counts of cases in Charnwood had shown an increasing trend from early September to mid-October, showing a peak around the 19th of October. Between the 19th of October and the 23rd November the weekly counts of cases showed a declining trend. Following this, the weekly counts of cases increased each week in Charnwood, peaking around December 28th. Since then, the rate has shown a declining trend.
- The latest weekly counts of cases have decreased from 351 in w/c 1st February to 314 in w/c 8th February.
- The latest weeks data shows 12 deaths involving Covid-19 were recorded in Charnwood in week 5 of 2021; eight deaths occurred in a hospital, three deaths occurred in a care home and one death occurred in 'other settings'.

- **Harborough** has the third lowest rate of Covid-19 cases and the lowest rate of deaths in the county. The rate of cumulative cases is significantly lower in comparison to the England average.
- From the beginning of September to the 9th November, the weekly counts of cases had shown an increasing trend in Harborough. Between the w/c 9th November and the w/c 7th December the weekly counts of cases showed a declining trend. Between then and December 28th, the weekly counts of cases had increased each week. Since then, the rate has decreased week on week.
- The latest weekly counts of cases have decreased from 168 in w/c 1st February to 144 in w/c 8th February.
- The latest weeks data shows six deaths involving Covid-19 were recorded in Harborough in week 5 of 2021; three deaths occurred in a hospital and three deaths occurred in a care home.

If you require information contained in this leaflet in another version e.g. large print, Braille, tape or alternative language please telephone: 0116 305 6803, Fax: 0116 305 7271 or Minicom: 0116 305 6160.

ਐ ਆਪ ਆ ਮਾਭਿਨੀ ਆਪਨੀ ਆਖਾਮਾਂ ਸਮਝਵਾਮਾਂ ਥੀੜੀ ਮਦਦ ਈਝਨਾਂ ਡੋ ਨੋ 0116 305 6803 ਨੰਬਰ ਪਰ ਫ਼ੋਨ ਡਰਥੋ ਅਨੇ ਅਮੇ ਆਪਨੇ ਮਦਦ ਡਰਵਾ ਆਵਰਥਾ ਡਰੀਝੁ.

ਜੇਕਰ ਤੁਹਾਨੂੰ ਇਸ ਜਾਣਕਾਰੀ ਨੂੰ ਸਮਝਣ ਵਿਚ ਕੁਝ ਮਦਦ ਚਾਹੀਦੀ ਹੈ ਤਾਂ ਕਿਰਪਾ ਕਰਕੇ 0116 305 6803 ਨੰਬਰ ਤੇ ਫ਼ੋਨ ਕਰੋ ਅਤੇ ਅਸੀਂ ਤੁਹਾਡੀ ਮਦਦ ਲਈ ਕਿਸੇ ਦਾ ਪ੍ਰਬੰਧ ਕਰ ਦਵਾਂਗੇ।

এই তথ্য নিজের ভাষায় বুঝার জন্য আপনার যদি কোন সাহায্যের প্রয়োজন হয়, তবে 0116 305 6803 এই নম্বরে ফোন করলে আমরা উপযুক্ত ব্যক্তির ব্যবস্থা করবো।

اگر آپ کو یہ معلومات سمجھنے میں کچھ مدد درکار ہے تو براہ مہربانی اس نمبر پر کال کریں
0116 305 6803 اور ہم آپ کی مدد کے لئے کسی کا انتظام کر دیں گے۔

假如閣下需要幫助，用你的語言去明白這些資訊，請致電 0116 305 6803，我們會安排有關人員為你提供幫助。

Jeżeli potrzebujesz pomocy w zrozumieniu tej informacji w Twoim języku, zadzwoń pod numer 0116 305 6803, a my Ci pomożemy.

Strategic Business Intelligence Team
Strategy and Business Intelligence Branch

Chief Executive's Department
Leicestershire County Council
County Hall
Glenfield
Leicester
LE3 8RA
ri@leics.gov.uk
www.lsr-online.org