
COVID-19: Data Update for Leicestershire

Period 10 February 2021 to 16 February 2021

Headline Summary

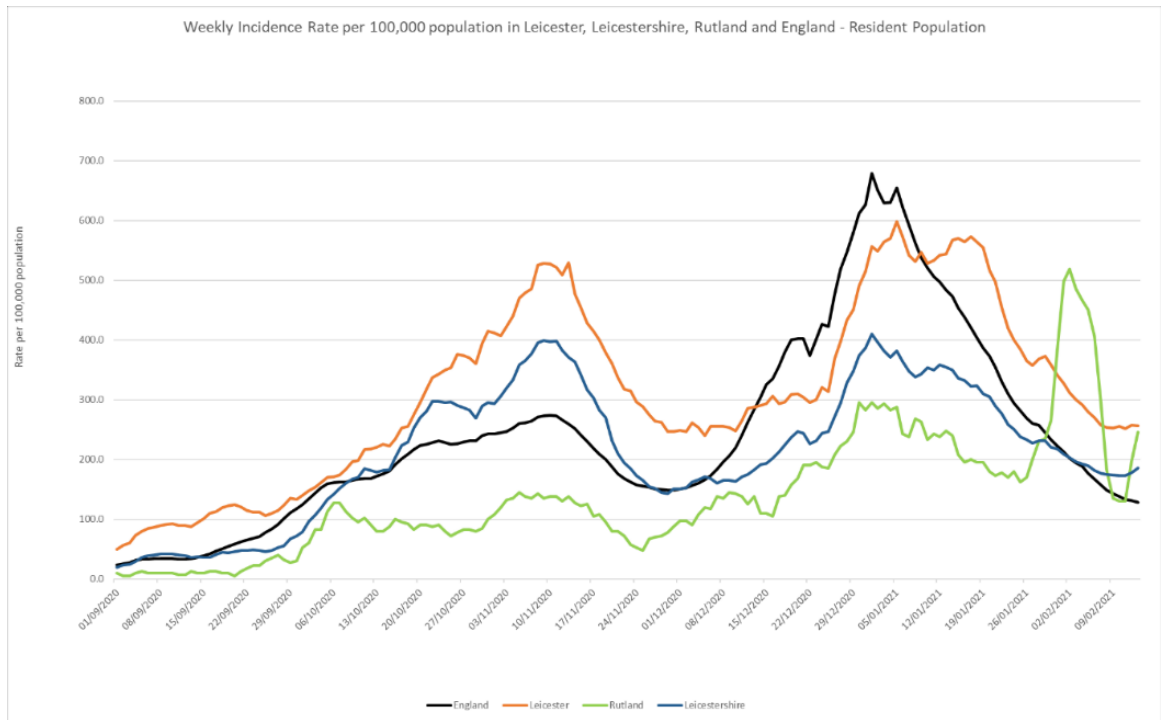
1. Position Statement from the Director of Public Health for Leicestershire

After a series of weeks when rates have been declining, albeit not as fast as the national decline, the last week has seen a worrying plateauing in the rate and an increase in some areas. North West Leicestershire has seen a 29% rise in its overall rate in the last seven days and a similar increase in the over 60s.

We're working with partners locally to continue to do some targeted work to try and bring down the cases in the district, included to continue to encourage eligible people without symptoms to get tested at our rapid test centre in Swannington, by booking online (www.leicestershire.gov.uk/covidtest).

2. Trend in Weekly Incidence Rate (All ages) – Leicester, Leicestershire, Rutland and England

- The national rate has decreased from 131.1 (period 9th Feb to 15th Feb) to 128.5 per 100,000 population (period 10th Feb to 16th Feb). This latest rate reflects a percentage change decrease of 23% compared to the previous 7 day period for England.
- The Leicestershire rate has increased from 178.4 (period 9th Feb to 15th Feb) to 185.8 per 100,000 population (period 10th Feb to 16th Feb). This latest rate reflects a percentage change increase of 2% compared to the previous 7 day period for Leicestershire. The rate in Leicestershire is higher than the national average.
- The rate for Leicester City stands at 256.3 per 100,000 population and is above the national average. The rate for Rutland stands at 245.4 per 100,000 population and is above the national average.

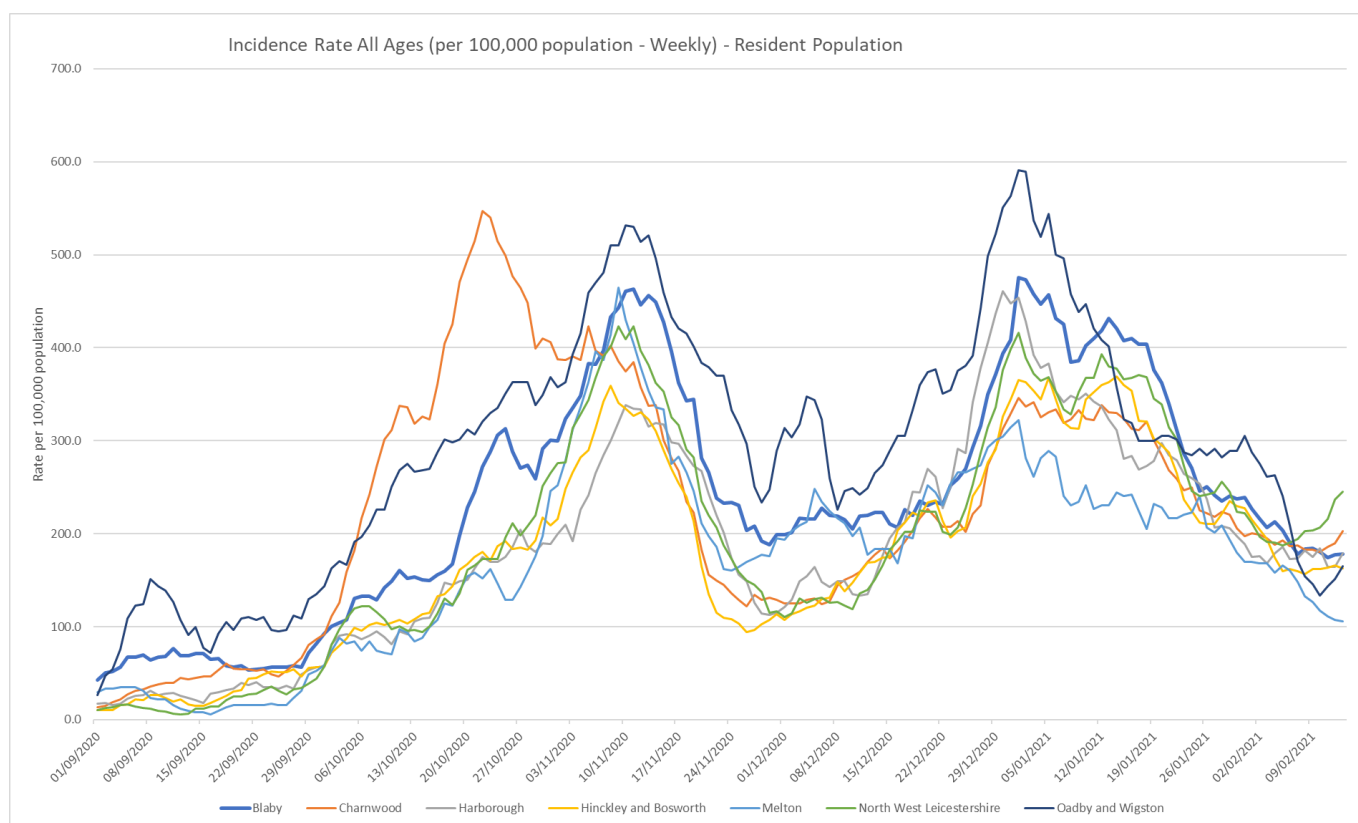


Source: PHE Power BI Line Lists

3. Trend in Weekly Incidence Rate (all ages) – Leicestershire Districts

- NWL has the highest rate in the county (245.1 per 100,000 population) followed by Charnwood (202.9), Harborough (179.1), Blaby (178.3), O&W (164.9), H&B (162.6) and Melton (105.5). Compared to the previous week, Charnwood, Harborough, H&B and NWL have increased, whilst Blaby, Melton and O&W have decreased like nationally.

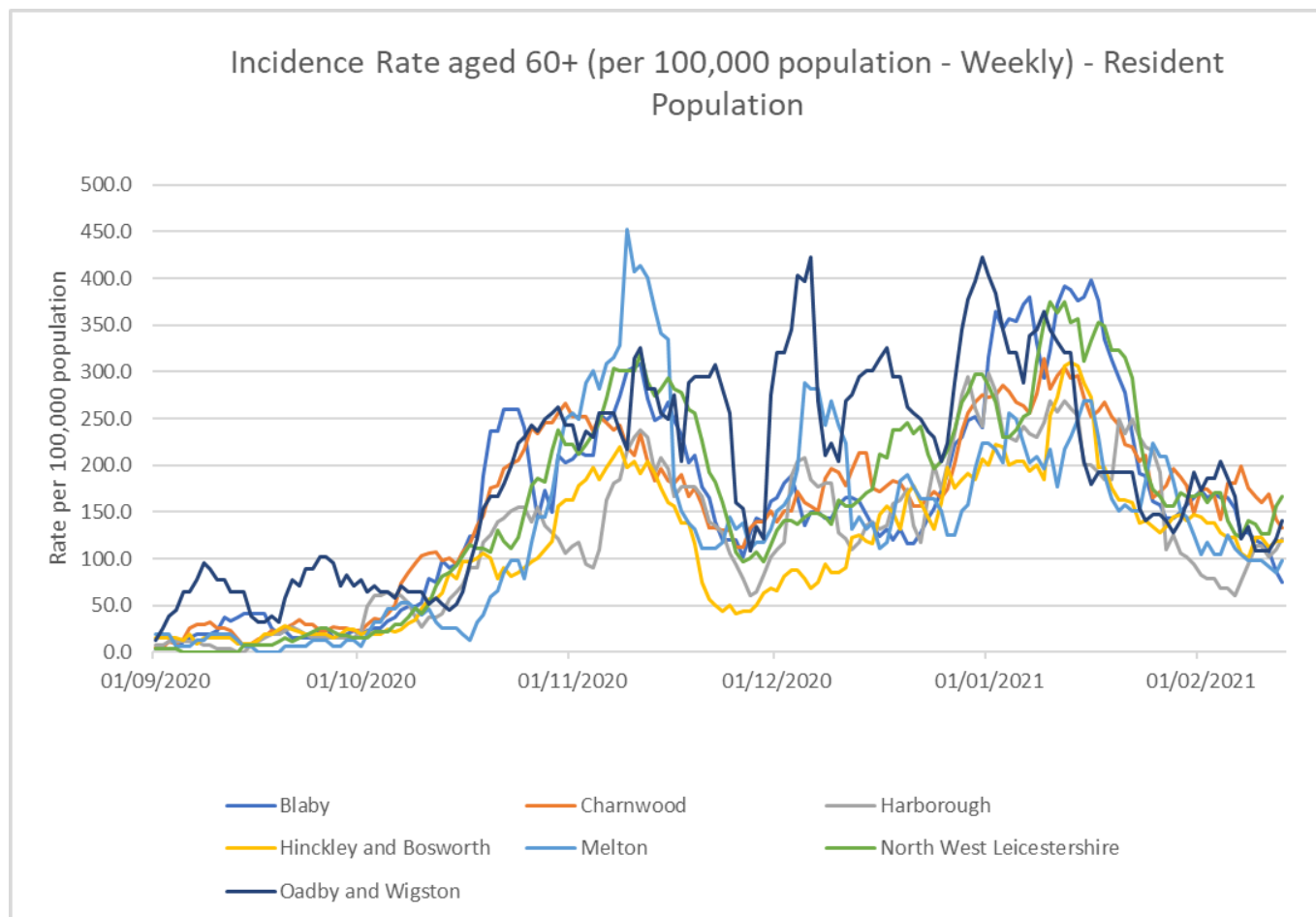
Indicator	Blaby	Charnwood	Harborough	Hinckley & Bosworth	Melton	NW Leicestershire	Oadby and Wigston	Leicestershire	England
Weekly incidence rate per 100,000 population (All Ages)	178.3	202.9	179.1	162.6	105.5	245.1	164.9	185.8	128.5
Weekly count of cases (All Ages)	181	377	168	184	54	254	94	1312	72340
Percentage change in cases from previous 7 days (All Ages)	-6%	9%	4%	1%	-34%	29%	-21%	2%	-23%
Weekly incidence rate per 100,000 population (60+)	75.2	132.8	120.9	119.0	98.4	167.0	140.8	123.3	94.3
Percentage individuals testing positive (weekly)	8.8%	8.9%	8.1%	7.2%	4.5%	9.9%	4.7%		5.4%



Source: PHE Power BI Line Lists

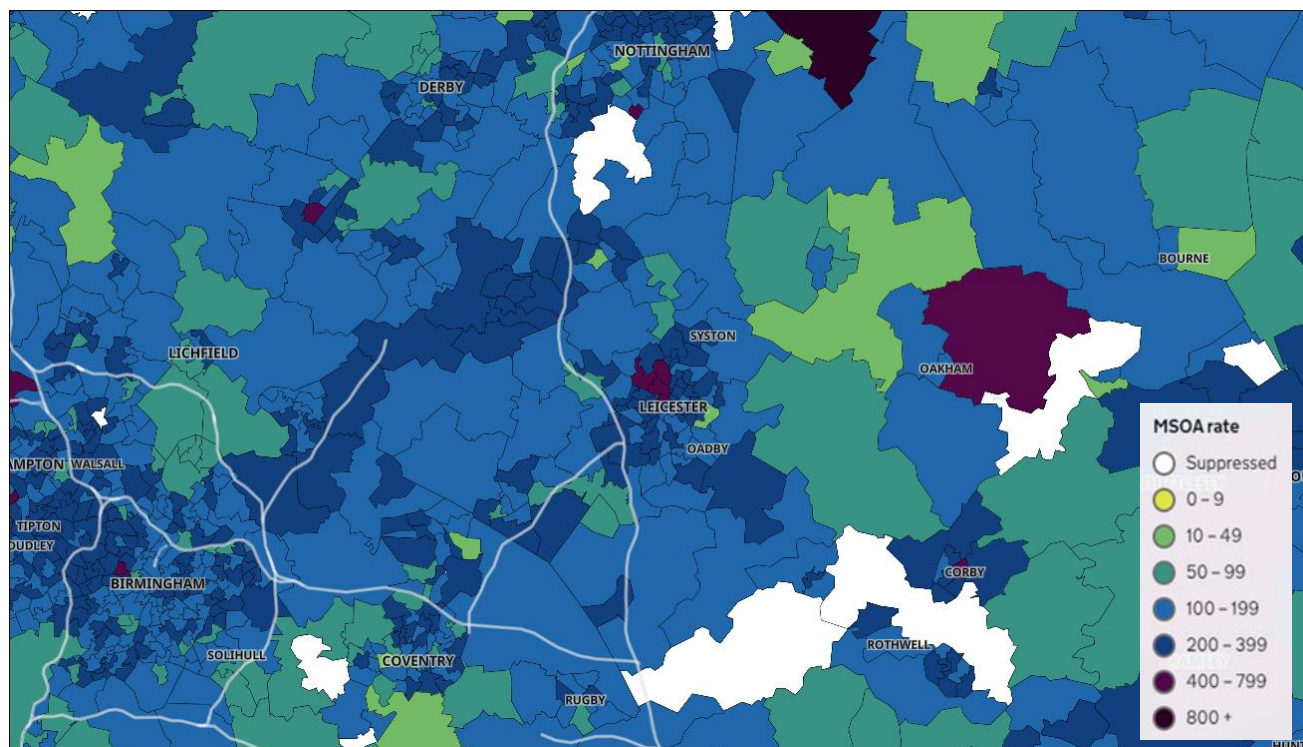
4. Trend in Weekly Incidence Rate (60+) – Leicestershire Districts

- The data for the 60+ population shows the rate for Leicestershire is 123.3 per 100,000 population, higher than the national rate of 94.3 per 100,000 population. NWL has the highest rate in the county (167.0 per 100,000 population) followed by O&W (140.8), Charnwood (132.8), Harborough (120.9), H&B (119.0), Melton (98.4) and Blaby (75.2). Compared to the previous week, most districts (apart from Harborough and NWL) have decreased like nationally.



Source: PHE Power BI Line Lists

5. Weekly Cases by Middle Super Output Area (MSOA)



Source: PHE Coronavirus (COVID-19) in the UK Dashboard

If you require information contained in this leaflet in another version e.g. large print, Braille, tape or alternative language please telephone: 0116 305 6803, Fax: 0116 305 7271 or Minicom: 0116 305 6160.

ਜੇ ਆਪ ਆ ਮਾਭਿੰਨੀ ਆਪਨੀ ਆਖਾਮਾਂ ਸਮਝਵਾਮਾਂ ਥੀਓ ਮਦਦ
ਓਝੜਨਾਂ ਡੇ ਤੇ 0116 305 6803 ਨੰਬਰ ਪਰ ਫ਼ੋਨ ਕਰਓ ਅਤੇ
ਅਮੇ ਆਪਨੇ ਮਦਦ ਕਰਵਾ ਅਵਸਥਾ ਕਰੀਓ.

ਜੇਕਰ ਤੁਹਾਨੂੰ ਇਸ ਜਾਣਕਾਰੀ ਨੂੰ ਸਮਝਣ ਵਿਚ ਕੁਝ ਮਦਦ ਚਾਹੀਦੀ
ਹੈ ਤਾਂ ਕਿਰਪਾ ਕਰਕੇ 0116 305 6803 ਨੰਬਰ ਤੇ ਫ਼ੋਨ ਕਰੋ ਅਤੇ
ਅਸੀਂ ਤੁਹਾਡੀ ਮਦਦ ਲਈ ਕਿਸੇ ਦਾ ਪ੍ਰਬੰਧ ਕਰ ਦਵਾਂਗੇ।

এই তথ্য নিজের ভাষায় বুঝার জন্য আপনার যদি কোন
সাহায্যের প্রয়োজন হয়, তবে 0116 305 6803 এই নম্বরে
ফোন করলে আমরা উপযুক্ত ব্যক্তির ব্যবস্থা করবো।

اگر آپ کو یہ معلومات سمجھنے میں کچھ مدد درکار ہے تو براہ مہربانی اس نمبر پر کال کریں
0116 305 6803 اور ہم آپ کی مدد کے لئے کسی کا انتظام کر دیں گے۔

假如閣下需要幫助，用你的語言去明白這些資訊，
請致電 0116 305 6803，我們會安排有關人員為你
提供幫助。

Jeżeli potrzebujesz pomocy w zrozumieniu tej informacji
w Twoim języku, zadzwoń pod numer 0116 305 6803,
a my Ci pomożemy.

22 February 2021

Strategic Business Intelligence Team
Business Intelligence
Chief Executive's Department
Leicestershire County Council
County Hall, Glenfield
Leicester LE3 8RA

Tel: 0116 305 6059
Email: Kajal.lad@leics.gov.uk

Produced by the Strategic Business Intelligence Team at Leicestershire County Council.

Whilst every effort has been made to ensure the accuracy of the information contained within this report, Leicestershire County Council cannot be held responsible for any errors or omission relating to the data contained within the report.