

**COVID-19:**

# **Data Update for Leicestershire**

Week 3 of 2021

2<sup>nd</sup> February 2021

Strategic Business Intelligence Team  
Business Intelligence  
Chief Executive's Department  
Leicestershire County Council  
County Hall, Glenfield  
Leicester LE3 8RA

Tel                   0116 305 6059  
Email:             [kajal.lad@leics.gov.uk](mailto:kajal.lad@leics.gov.uk)

Produced by the Strategic Business Intelligence Team at Leicestershire County Council.

Whilst every effort has been made to ensure the accuracy of the information contained within this report, Leicestershire County Council cannot be held responsible for any errors or omission relating to the data contained within the report.

# What have we learnt from the newly released Covid-19 data?

A series of publicly available dashboards examining Covid-19 cases, deaths involving Covid-19 and a district summary are available at the below links. A summary narrative to support the data in these dashboards then follows.

- [Deaths involving Covid-19](#)
- [Covid-19 Summary at District Level](#)
- [PHE Weekly Covid-19 Cases](#)

## 1. 81 deaths<sup>1</sup> involving Covid-19 were recorded in Leicestershire in the last week

- As of week 3 2021 (up to 22<sup>nd</sup> January), there have been a total of 1,166 deaths in Leicestershire. The number of weekly counts of deaths has increased from 62 deaths in week 2 of 2021 to 81 deaths in week 3 of 2021.
- Of all deaths involving Covid-19 in Leicestershire, 754 (64.7%) were in hospital and 331 (28.4%) were in a care home.
- In week 3 in Leicestershire, there were 55 deaths in hospital, 24 deaths in a care home and two deaths in 'other settings'.

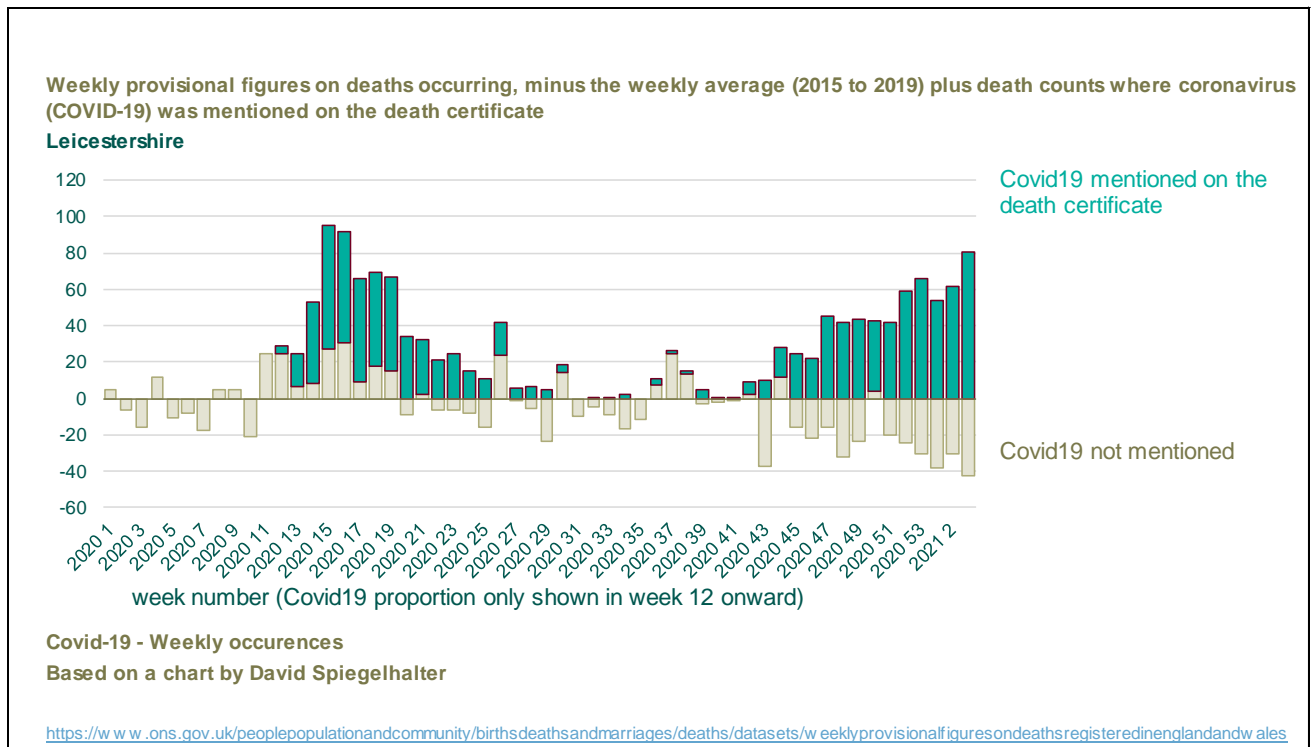
<sup>1</sup> Death counts are based on death occurrences. The death is counted as involving Covid-19 if Covid-19 was mentioned on the death certificate. Please note, Covid-19 may not have been confirmed by a test. Source: [Office for National Statistics](#) (2019)

### Deaths (numbers) by local authority and place of death, for deaths that occurred up to 22<sup>nd</sup> January but were registered up to 30<sup>th</sup> January.

	Care Home		Elsewhere		Home		Hospice		Hospital		Total				Population
	Count	Rate	Count	Rate	Count	Rate	Count	Rate	Count	Rate	Count	Rate	LCI	UCI	
Blaby	40	39.8	5	5.0	8	8.0	1	1.0	114	113.5	168	167.3	143.0	194.6	100421
Charnwood	72	39.4	3	1.6	12	6.6	5	2.7	179	98.0	271	148.4	131.2	167.1	182643
Harborough	46	49.7	0	0.0	8	8.6	2	2.2	74	80.0	130	140.5	117.4	166.9	92499
H&B	50	44.5	0	0.0	8	7.1	5	4.4	119	105.9	182	161.9	139.2	187.2	112423
Melton	42	82.2	1	2.0	4	7.8	1	2.0	43	84.1	91	178.1	143.4	218.6	51100
NWLeics	40	39.2	2	2.0	8	7.8	3	2.9	124	121.4	177	173.3	148.7	200.8	102126
O&W	41	71.9	2	3.5	3	5.3	0	0.0	101	177.0	147	257.6	217.7	302.8	57056
Leicestershire	331	47.4	13	1.9	51	7.3	17	2.4	754	108.0	1166	167.0	157.5	176.9	698268
Rutland	16	40.3	0	0.0	3	7.6	2	5.0	23	57.9	44	110.8	80.5	148.8	39697
Leicester City	101	28.4	18	5.1	44	12.4	2	0.6	440	123.9	605	170.3	157.0	184.4	355218
LLR	448	41.0	31	2.8	98	9.0	21	1.9	1217	111.3	1815	166.0	158.5	173.8	1093183

## 2. 38 excess deaths were recorded in the last week in Leicestershire

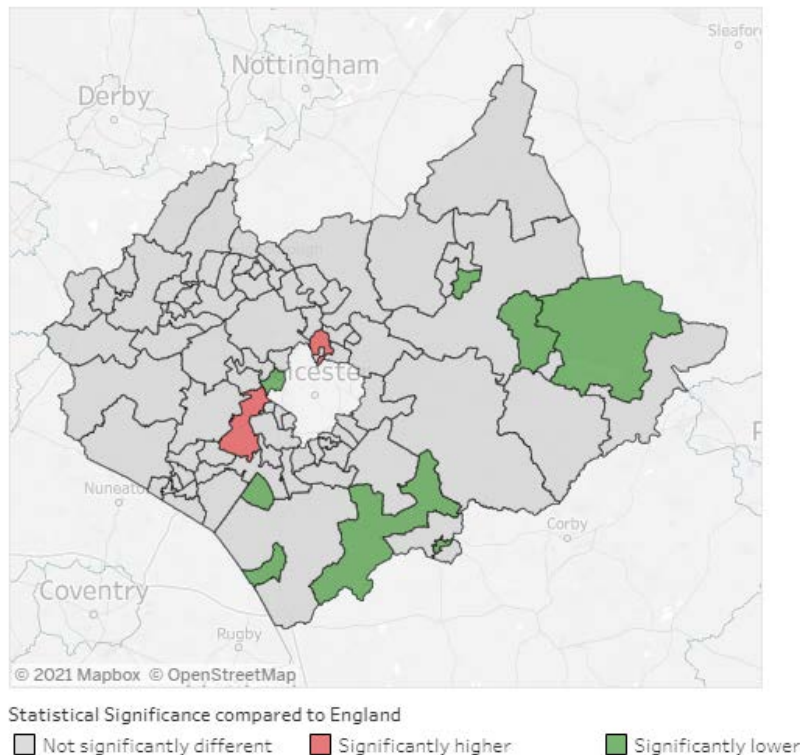
- Counts of excess deaths in Leicestershire have fluctuated over the previous ten weeks. There has been a decrease in all deaths seen in week 3 2021. The latest figures from ONS show that 185 deaths occurred in Leicestershire in week 3 of 2021. There were 38 excess deaths reported in the last week.
- The latest weeks data shows that there were 81 deaths that mentioned Covid-19 on the death certificate in week 3.



### 3. One area in Blaby and one area in Charnwood has a significantly higher percentage of deaths involving Covid-19 than the national percentage

- The map below examines the statistical significance compared to England, of the percentage of deaths involving Covid-19 by Middle Layer Super Output Area (MSOA) in Leicestershire and Rutland. These deaths occurred between 1<sup>st</sup> March and 31<sup>st</sup> December 2020.
- Kirby Muxloe and Thurlaston in Blaby recorded 25 deaths involving Covid-19 in this time period, this represented 27.8% of all deaths. Birstall Wanlip & Riverside in Charnwood recorded 20 deaths involving Covid-19 which represented 22.2% of all deaths.
- Nationally, deaths involving Covid-19 made up under a fifth (14.5%) of all deaths.
- Eight MSOAs in Leicestershire and Rutland have a significantly lower percentage of deaths involving Covid-19 compared to England. These are:
  - Glenfield in Blaby (6, 6.7%)
  - Melton Mowbray South in Melton (4, 5.6%)
  - Fleckney, Kilworth & Foxton in Harborough (5, 5.6%)
  - Market Harborough Central in Harborough (4, 5.1%)
  - Lutterworth in Harborough (5, 5.1%)
  - Oakham West, Langham & Whissendine in Rutland (3, 4.1%)
  - Broughton Astley in Harborough (2, 3.1%)
  - Market Overton, Cottesmore & Empingham in Rutland (0, 0.0%)
- Further data examining deaths involving Covid-19 by local area is available in the dashboard available at [this link](#).

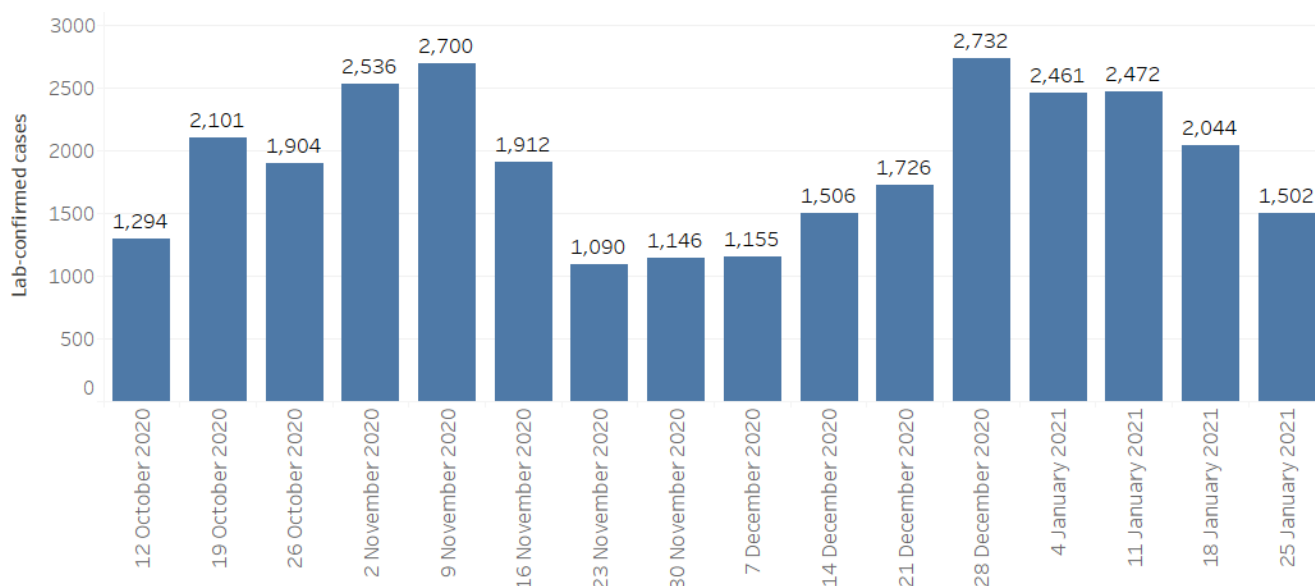
**Statistical Significance compared to England of the deaths involving Covid-19 by Middle Layer Super Output Area, Leicestershire and Rutland, deaths occurring between 1<sup>st</sup> March 2020 and 31<sup>st</sup> December 2020.**



## 4. Weekly counts of cases have decreased in the past week in Leicestershire

NOTE: On 16<sup>th</sup> November 2020, Public Health England updated the way it records the location of people who test positive or negative for Covid-19. It now prioritises addresses given at the point of testing over the details registered on a patient's NHS Summary Care Record. This better reflects the distribution of cases and testing. However, it may give rise to differences in previously reported numbers of cases and rates in some areas. The change has been retrospectively applied to tests carried out from 1<sup>st</sup> September 2020, and data reports were updated to reflect this change on 16<sup>th</sup> November 2020.

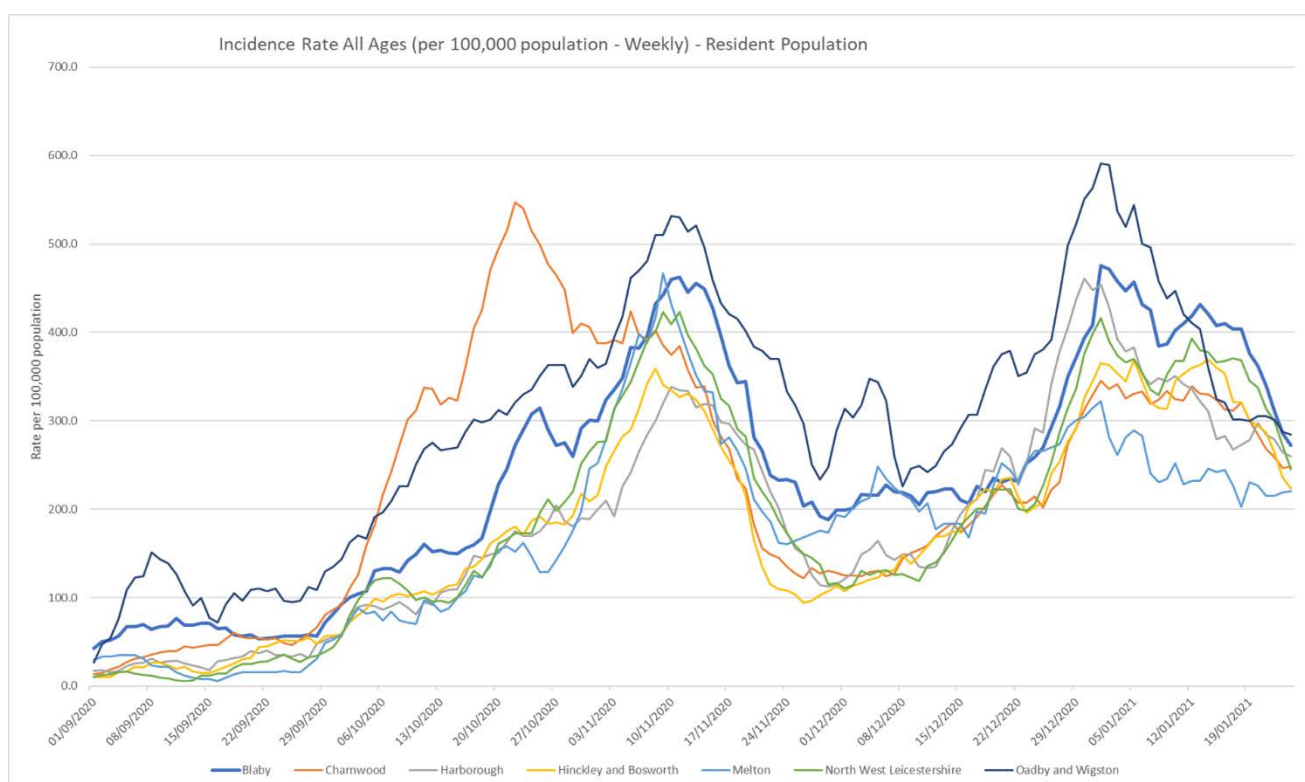
- As of 31<sup>st</sup> January, Leicestershire has recorded a total of 36,715 lab-confirmed cases of Covid-19. This data relates to pillar 1 and 2 cases.
- Throughout September and October to the second week of November the weekly counts of cases had shown an increasing trend in Leicestershire. For the two weeks following this, the counts of cases decreased. Between then and the end of December the case count increased, since then the weekly counts of cases have shown a decreasing trend.
- The latest weekly data shows 1,502 cases have been confirmed in Leicestershire in the last week. This count has decreased compared to the previous week where 2,044 cases were confirmed.



## 5. Oadby and Wigston has the highest weekly incidence rate of Covid-19 cases for people of all ages in the county

NOTE: On 16<sup>th</sup> November 2020, Public Health England updated the way it records the location of people who test positive or negative for Covid-19. It now prioritises addresses given at the point of testing over the details registered on a patient's NHS Summary Care Record. This better reflects the distribution of cases and testing. However, it may give rise to differences in previously reported numbers of cases and rates in some areas. The change has been retrospectively applied to tests carried out from 1<sup>st</sup> September 2020, and data reports were updated to reflect this change on 16<sup>th</sup> November 2020.

- The incidence rate for Covid-19 cases in Leicestershire had shown an increasing trend from mid-September to the second week of November. Throughout the remainder of November, the incidence rate in Leicestershire had shown a declining trend for people of all ages, but then increased throughout December. Since the beginning of January, the incidence rate in Leicestershire has shown a declining trend. The incidence rate in Leicestershire is lower (249.8 per 100,000 population) than the national rate (294.2 per 100,000 population) as of 24<sup>th</sup> January 2021.
- The latest weekly incidence rates of Covid-19 cases for people of all ages (as of 24<sup>th</sup> January) show that all area rates in Leicestershire are lower than the national rate (294.2 per 100,000 population):
  - Oadby and Wigston; 284.1 per 100,000 population (162 cases)
  - Blaby; 271.9 per 100,000 (276 cases)
  - Harborough; 260.1 per 100,000 (244 cases)
  - Charnwood; 248.9 per 100,000 (462 cases)
  - North West Leicestershire; 245.1 per 100,000 (254 cases)
  - Hinckley and Bosworth; 223.6 per 100,000 (253 cases)
  - Melton; 220.7 per 100,000 (113 cases)

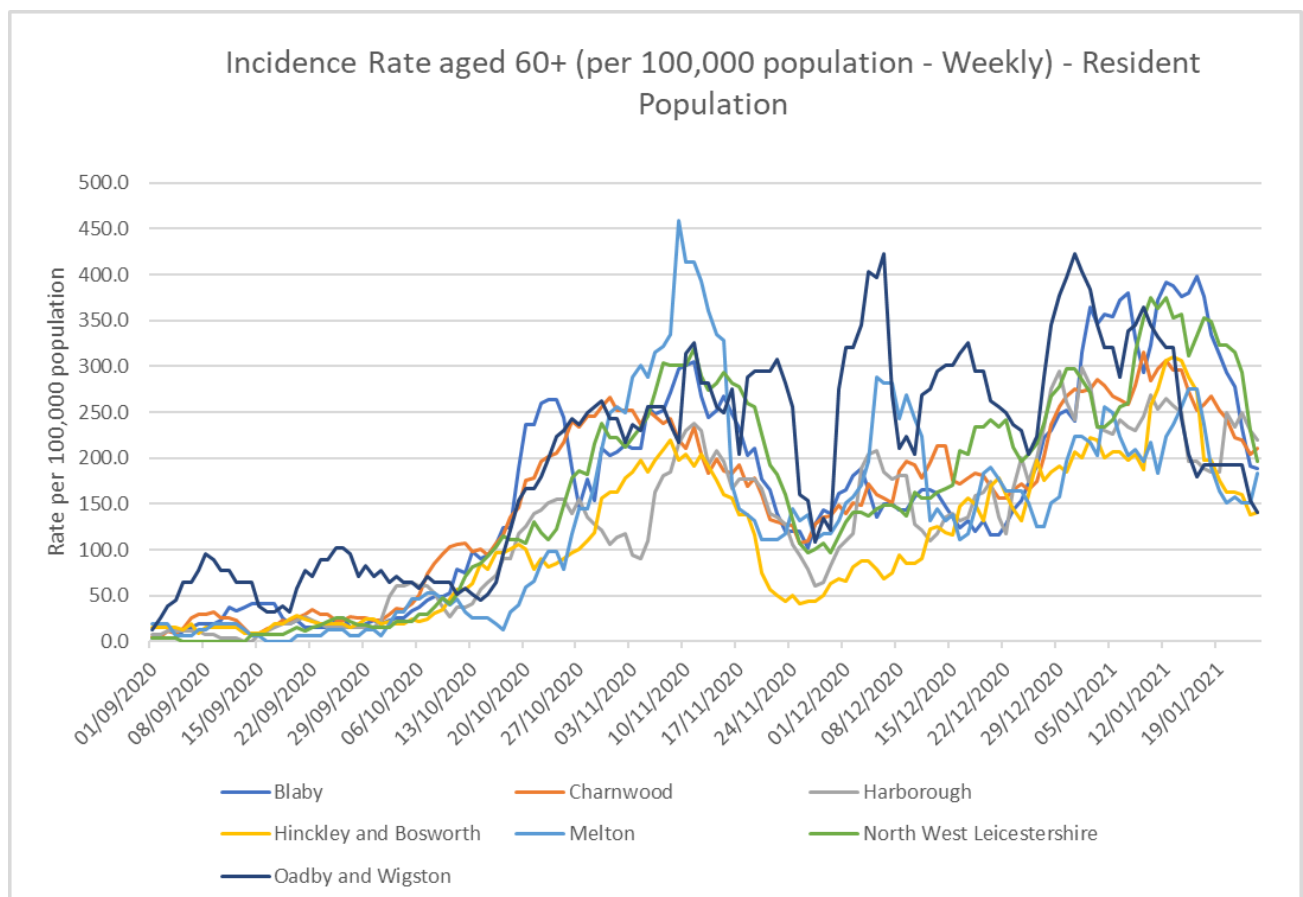






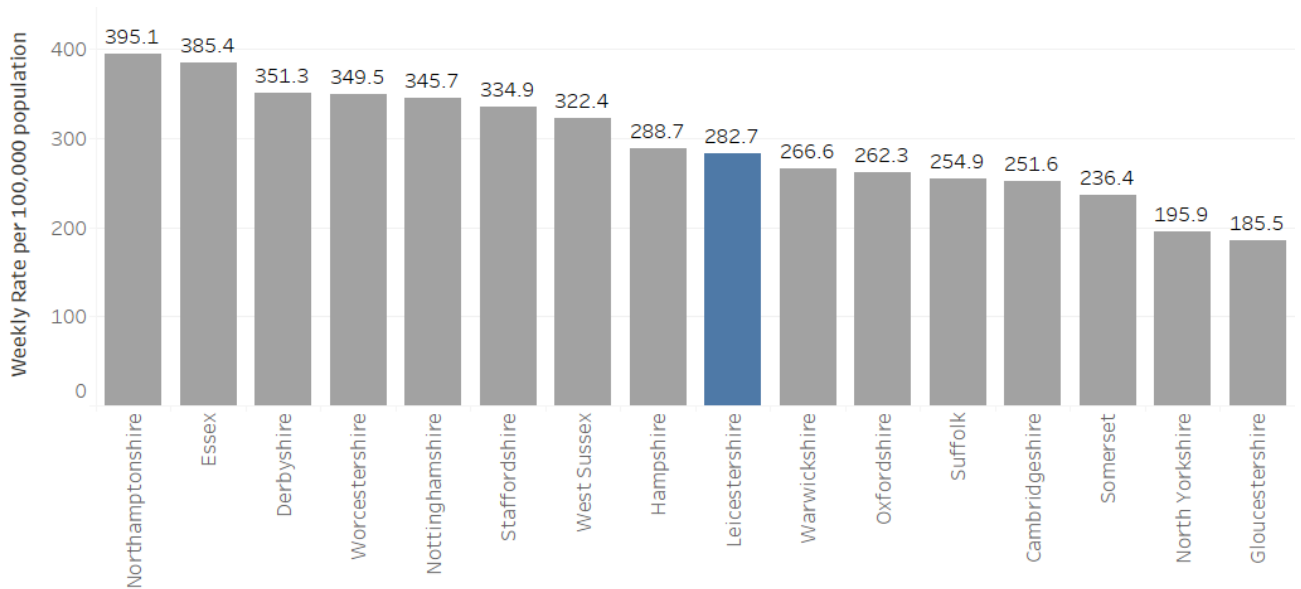
## 7. Harborough and Charnwood have the highest weekly incidence rates of Covid-19 cases for people aged 60+ in the county

- The incidence rate for Covid-19 cases in people aged 60+ in Leicestershire had been increasing from the end of September to the 11<sup>th</sup> of November. From the 11<sup>th</sup> November to the beginning of December, the rate declined. Since the beginning of December the incidence rate of Covid-19 cases in people aged 60+ in Leicestershire has fluctuated, with the exception of the last week of December where the rate showed an increasing trend. Since the beginning of January the rate showed a declining trend. The rate for Leicestershire (186.6 per 100,000 population) is lower than the national rate (232.9 per 100,000 population) as of 24<sup>th</sup> January.
- The latest weekly incidence rates of Covid-19 cases for people aged 60+ (as of 24<sup>th</sup> January) show that all area rates in Leicestershire are lower than the national rate (232.9 per 100,000 population):
  - Harborough; 219.2 per 100,000 (58 cases)
  - Charnwood; 210.6 per 100,000 (92 cases)
  - North West Leicestershire; 196.6 per 100,000 (53 cases)
  - Blaby; 188.1 per 100,000 (50 cases)
  - Melton; 183.7 per 100,000 (28 cases)
  - Hinckley and Bosworth; 140.9 per 100,000 (45 cases)
  - Oadby and Wigston; 140.8 per 100,000 (22 cases)



## 8. Leicestershire has seen a decrease in the weekly rate of Covid-19 cases

- There has been a decrease in the weekly rate of Covid-19 cases in Leicestershire from 343.6 (per 100,000 population) in week 2 of 2021 to 282.7 (per 100,000 population) in week 3 of 2021.
- As of week 3 (18<sup>th</sup> January to 24<sup>th</sup> January 2021), Leicestershire is ranked 101<sup>st</sup> (highest) out of 149 upper tier local authorities and ranked the 8<sup>th</sup> (lowest) out of its CIPFA similar areas.



## 9. The MSOA with the highest count of Covid-19 cases in the last week was Oadby North & East

- Between 18<sup>th</sup> January to 24<sup>th</sup> January 2021 (week 3 of 2021), the Middle Super Output Area (MSOA) with the highest count of confirmed cases of Covid-19 was Oadby North & East with 54 reported cases. This was followed by:
  - Kibworth & Great Glen (53)
  - Hugglescote & Bardon Hill (40), Earl Shilton (40)
  - Loughborough Lemyngton & Hastings (39)
  - Ibstock & Ellistown (38)
  - Thurmaston (35)
  - Stoney Stanton, Sapcote & Sharnford (34), Enderby & Glen Parva (34), Blaby Village (34), Birstall Wanlip & Riverside (34)
  - Glenfield (32)
  - Houghton, Thurby & Scraftoft (31), Dunton Bassett, Claybrooke & Swinford (31)
  - Loughborough – Shelthorpe & Woodthorpe (29), Braunstone Town (29)
  - South Wigston (28), Castle Donington (28)
  - Whetstone (27), Thorpe Astley (27), Melton Mowbray North (27), Burbage Sketchley & Stretton (27)
  - Market Harborough West, Great Bowden & Lubenham (26), Coalville (26)
  - Shepshed East (25), Agar Nook (25)
- All other areas recorded less than 25 cases in the last week.
- Areas that recorded between zero and two cases in the last week have been suppressed due to data disclosure and are represented as white in the map below.

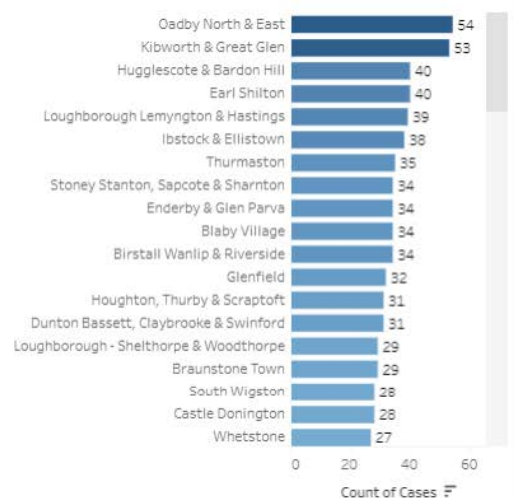
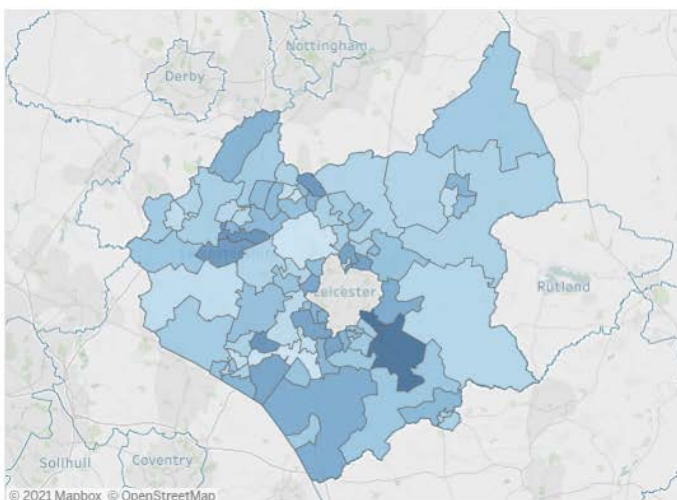
Weekly Counts of Lab-confirmed Covid-19 cases by Middle Layer Super Output Area, Leicester, Leicestershire and Rutland



As of  Local Authority

COVID-19 Cases:

Week 3 of 2021



## 10. District Level Summary

- **Oadby & Wigston** continues to have the highest rate of Covid-19 cases and deaths in the county. The rate of cumulative cases is significantly higher in comparison to the England average.
- From the beginning of September to the 9<sup>th</sup> November, the weekly counts of cases had shown an increasing trend in Oadby and Wigston. Between the w/c 9<sup>th</sup> November and the w/c 28<sup>th</sup> December, the weekly counts of cases fluctuated. Since then, the weekly counts of cases have decreased each week in Oadby and Wigston.
- The weekly counts of cases have decreased from 174 in w/c 18<sup>th</sup> January to 155 in w/c 25<sup>th</sup> January.
- The latest weeks data on death occurrences shows 7 deaths involving Covid-19 were recorded in Oadby & Wigston in week 3 of 2021; five deaths occurred in a hospital and two deaths occurred in a care home.
  
- **Melton** has the lowest rate of Covid-19 cases and the second highest rate of deaths in the county. The rate of cumulative cases is significantly lower than the England average.
- From mid-September, the weekly counts of cases had been increasing week on week in Melton, showing a peak around the 9<sup>th</sup> of November, a second peak was witnessed around 28<sup>th</sup> of December. Since then, the weekly counts of cases have fluctuated.
- The latest weekly counts of cases have decreased from 110 in w/c 18<sup>th</sup> January to 100 in w/c 25<sup>th</sup> January.
- The latest weekly count of deaths involving Covid-19 shows that five deaths occurred in Melton in week 3 of 2021; three deaths occurred in a hospital and two deaths occurred in a care home.
  
- **North West Leicestershire** has the fourth highest rate of Covid-19 cases and the third highest rate of deaths in the county. The rate of cumulative cases is significantly lower than the England average.
- From early September to the 9<sup>th</sup> November an increasing trend in the weekly counts of cases had been witnessed in North West Leicestershire. Following this, the weekly counts of cases decreased each week for four weeks. Since then, the weekly counts of cases have fluctuated.
- The latest weekly counts of cases have decreased from 325 in w/c 18<sup>th</sup> January to 248 in w/c 25<sup>th</sup> January.
- The latest weekly count of deaths involving Covid-19 shows that 11 deaths occurred in North West Leicestershire in week 3 of 2021; nine deaths occurred in a hospital and two deaths occurred in a care home.
  
- **Blaby** has the second highest rate of Covid-19 cases in the county and the fourth highest rate of deaths. The rate of cumulative cases is significantly lower compared to the England average.
- From mid-September, the weekly counts of cases in Blaby had shown an increasing trend, with a peak around the 9<sup>th</sup> of November. From then, the weekly counts of cases have fluctuated, with the exception of the last three weeks of December and the first week of January where the weekly counts of cases increased each week. Since the 4<sup>th</sup> of January, the weekly counts of cases have shown a declining trend in Blaby.
- The latest weekly counts of cases have decreased from 345 in w/c 18<sup>th</sup> January to 224 in w/c 25<sup>th</sup> January.
- The latest weeks data shows 15 deaths involving Covid-19 were recorded in Blaby in week 3 of 2021; six deaths occurred in a hospital, eight deaths occurred in a care home and one death occurred in 'other settings' .

- **Hinckley & Bosworth** has the second lowest rate of Covid-19 cases and third lowest rate of deaths in the county. The rate of cumulative cases is significantly lower compared to the England average.
- From mid-September to the 9<sup>th</sup> of November, the weekly counts of cases had increased each week in Hinckley and Bosworth. Since then, the weekly counts of cases have fluctuated.
- The latest weekly counts of cases have decreased from 324 in w/c 18<sup>th</sup> January to 220 in w/c 25<sup>th</sup> January.
- The latest weeks data shows 14 deaths involving Covid-19 were recorded in Hinckley & Bosworth in week 3 of 2021; nine deaths occurred in a hospital and five deaths occurred in a care home.
- **Charnwood** has the third highest rate of Covid-19 cases and the second lowest rate of deaths in the county. The rate of cumulative cases is significantly lower in comparison to the England average.
- The weekly counts of cases in Charnwood had increased each week from early September to mid-October, showing a peak around the 19<sup>th</sup> of October. Between the 19<sup>th</sup> of October and the 23<sup>rd</sup> November the weekly counts of cases showed a declining trend. Following this, the weekly counts of cases increased each week in Charnwood, peaking around December 28<sup>th</sup>. Since then, the rate has fluctuated.
- The latest weekly counts of cases have decreased from 499 in w/c 18<sup>th</sup> January to 375 in w/c 25<sup>th</sup> January.
- The latest weeks data shows 20 deaths involving Covid-19 were recorded in Charnwood in week 3 of 2021; 15 deaths occurred in a hospital and five deaths occurred in a care home.
- **Harborough** has the third lowest rate of Covid-19 cases and the lowest rate of deaths in the county. The rate of cumulative cases is significantly lower in comparison to the England average.
- From the beginning of September to the 9<sup>th</sup> November, the weekly counts of cases had shown an increasing trend in Harborough. Between the w/c 9<sup>th</sup> November and the w/c 7<sup>th</sup> December the weekly counts of cases showed a declining trend. Between then and December 28<sup>th</sup>, the weekly counts of cases had increased each week. Since then, the rate has decreased week on week.
- The latest weekly counts of cases have decreased from 267 in w/c 18<sup>th</sup> January to 180 in w/c 25<sup>th</sup> January.
- The latest weeks data shows nine deaths involving Covid-19 were recorded in Harborough in week 3 of 2021; eight deaths occurred in a hospital and one death occurred in 'other settings'.

---

If you require information contained in this leaflet in another version e.g. large print, Braille, tape or alternative language please telephone: 0116 305 6803, Fax: 0116 305 7271 or Minicom: 0116 305 6160.

જો આપ આ માહિતી આપની ભાષામાં સમજવામાં થોડી મદદ ઇચ્છતાં હો તો 0116 305 6803 નંબર પર ફોન કરશો અને અમે આપને મદદ કરવા યત્ન કરીશું.

ਜੇਕਰ ਤੁਹਾਨੂੰ ਇਸ ਜਾਣਕਾਰੀ ਨੂੰ ਸਮਝਣ ਵਿਚ ਕੁਝ ਮਦਦ ਚਾਹੀਦੀ ਹੈ ਤਾਂ ਕਿਰਪਾ ਕਰਕੇ 0116 305 6803 ਨੰਬਰ ਤੇ ਫੋਨ ਕਰੋ ਅਤੇ ਅਸੀਂ ਤੁਹਾਡੀ ਮਦਦ ਲਈ ਕਿਸੇ ਦਾ ਪ੍ਰਬੰਧ ਕਰ ਦਵਾਂਗੇ।

এই তথ্য নিজের ভাষায় বুঝার জন্য আপনার যদি কোন সাহায্যের প্রয়োজন হয়, তবে 0116 305 6803 এই নম্বরে ফোন করলে আমরা উপযুক্ত ব্যক্তির ব্যবস্থা করবো।

اگر آپ کو یہ معلومات سمجھنے میں کچھ مدد درکار ہے تو براہ مہربانی اس نمبر پر کال کریں  
0116 305 6803 اور ہم آپ کی مدد کے لئے کسی کا انتظام کر دیں گے۔

假如閣下需要幫助，用你的語言去明白這些資訊，請致電 0116 305 6803，我們會安排有關人員為你提供幫助。

Jeżeli potrzebujesz pomocy w zrozumieniu tej informacji w Twoim języku, zadzwoń pod numer 0116 305 6803, a my Ci dopomożemy.

---

Strategic Business Intelligence Team  
Strategy and Business Intelligence Branch

Chief Executive's Department  
Leicestershire County Council  
County Hall  
Glenfield  
Leicester  
LE3 8RA  
[ri@leics.gov.uk](mailto:ri@leics.gov.uk)  
[www.lsr-online.org](http://www.lsr-online.org)