

---

## COVID-19: Data Update for Leicestershire

Period 17 February 2021 to 23 February 2021

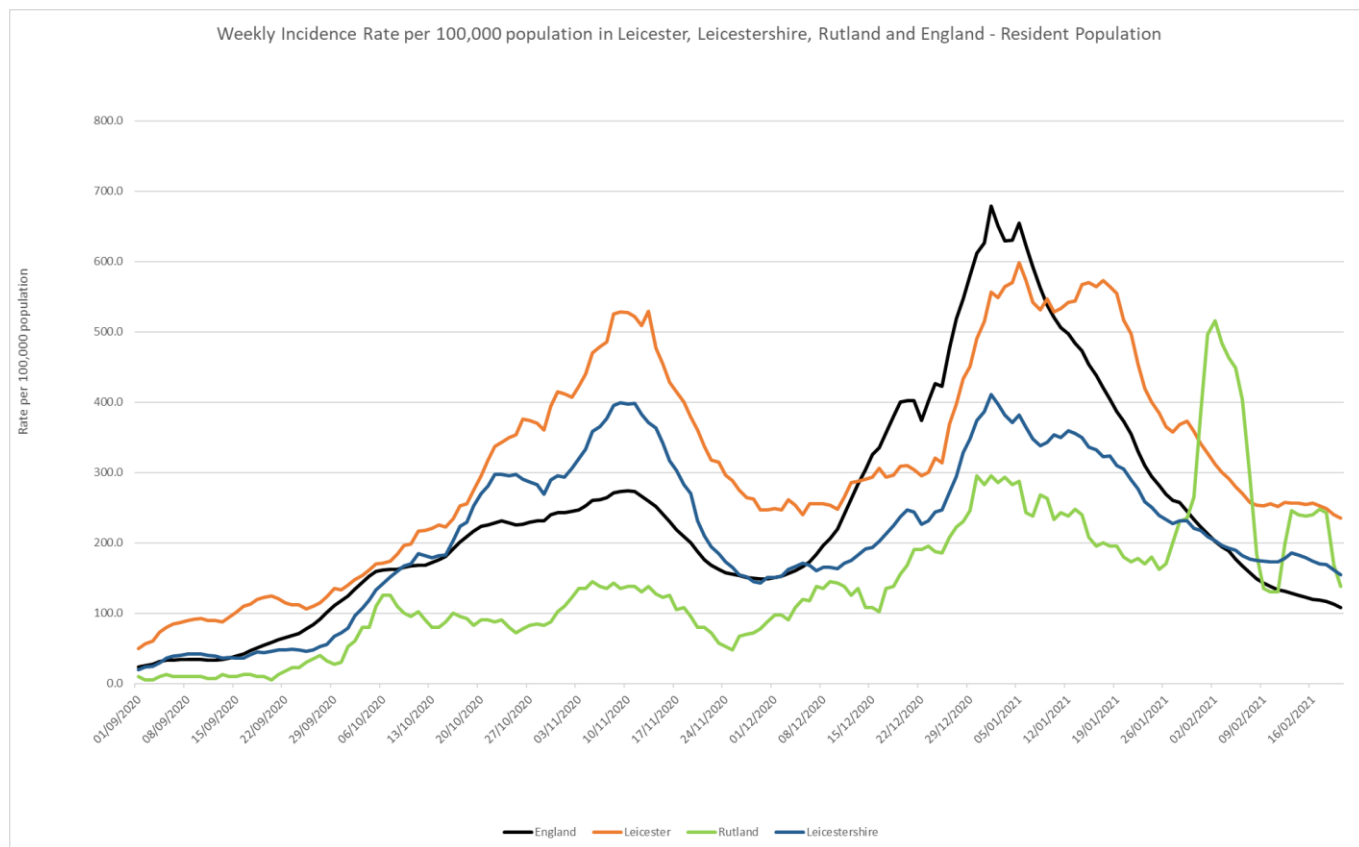
### Headline Summary

#### **1. Position Statement from the Director of Public Health for Leicestershire**

*Work continues on hotspot testing in North West Leicestershire and targeted messaging in North West Leicestershire and Charnwood. It remains a concern that the East Midlands has the highest rates in the country. Within Leicestershire we need to continue to bear down in those areas where progress has been slower (North West Leicestershire & Charnwood) whilst recognising that good progress has been made lately in Harborough and Melton where rates are both now below 100 positive cases per 100,000 population.*

#### **2. Trend in Weekly Incidence Rate (All ages) – Leicester, Leicestershire, Rutland and England**

- The national rate has decreased from 112.6 (period 16<sup>th</sup> Feb to 22<sup>nd</sup> Feb) to 107.8 per 100,000 population (period 17<sup>th</sup> Feb to 23<sup>rd</sup> Feb). This latest rate reflects a percentage change decrease of 16% compared to the previous 7 day period for England.
- The Leicestershire rate has decreased from 161.4 (period 16<sup>th</sup> Feb to 22<sup>nd</sup> Feb) to 154.5 per 100,000 population (period 17<sup>th</sup> Feb to 23<sup>rd</sup> Feb). This latest rate reflects a percentage change decrease of 17% compared to the previous 7 day period for Leicestershire. The rate in Leicestershire is higher than the national average.
- The rate for Leicester City stands at 234.9 per 100,000 population and is above the national average. The rate for Rutland stands at 137.8 per 100,000 population and is above the national average.

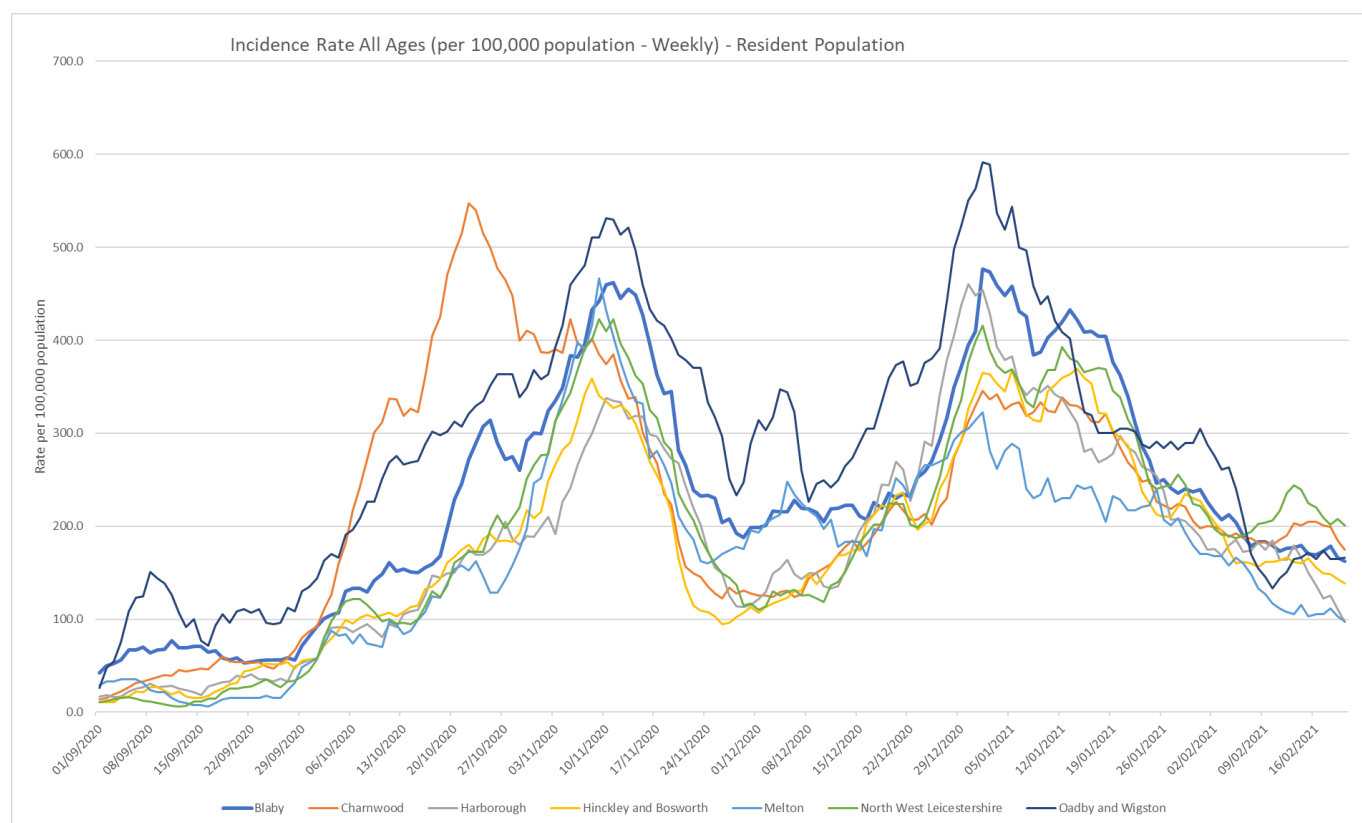


Source: PHE Power BI Line Lists

### 3. Trend in Weekly Incidence Rate (all ages) – Leicestershire Districts

- NWL has the highest rate in the county (200.8 per 100,000 population) followed by Charnwood (174.9), O&W (166.6), Blaby (162.5), H&B (138.8), Melton (97.6) and Harborough (97.0). Compared to the previous week, most districts (apart from O&W) have decreased like nationally.

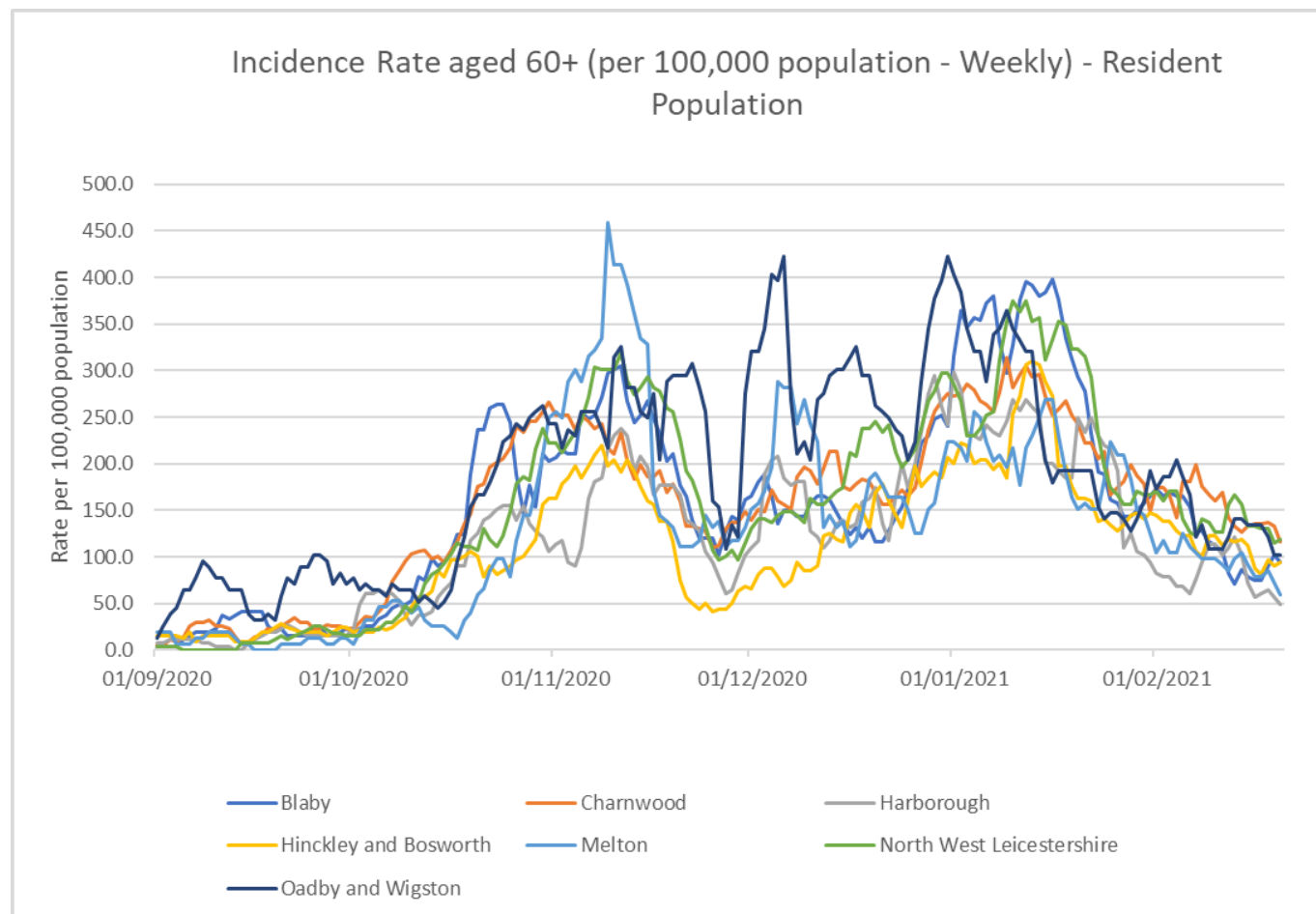
Indicator	Blaby	Charnwood	Harborough	Hinckley & Bosworth	Melton	NW Leicestershire	Oadby and Wigston	Leicestershire	England
Weekly incidence rate per 100,000 population (All Ages)	162.5	174.9	97.0	138.8	97.6	200.8	166.6	154.5	107.8
Weekly count of cases (All Ages)	165	325	91	157	50	208	95	1091	60693
Percentage change in cases from previous 7 days (All Ages)	-8%	-14%	-46%	-14%	-7%	-18%	1%	-17%	-16%
Weekly incidence rate per 100,000 population (60+)	94.0	116.8	49.1	93.9	59.0	118.7	102.4	94.4	73.1
Percentage individuals testing positive (weekly)	8.5%	8.3%	5.2%	6.4%	4.6%	9.2%	5.1%		4.6%



Source: PHE Power BI Line Lists

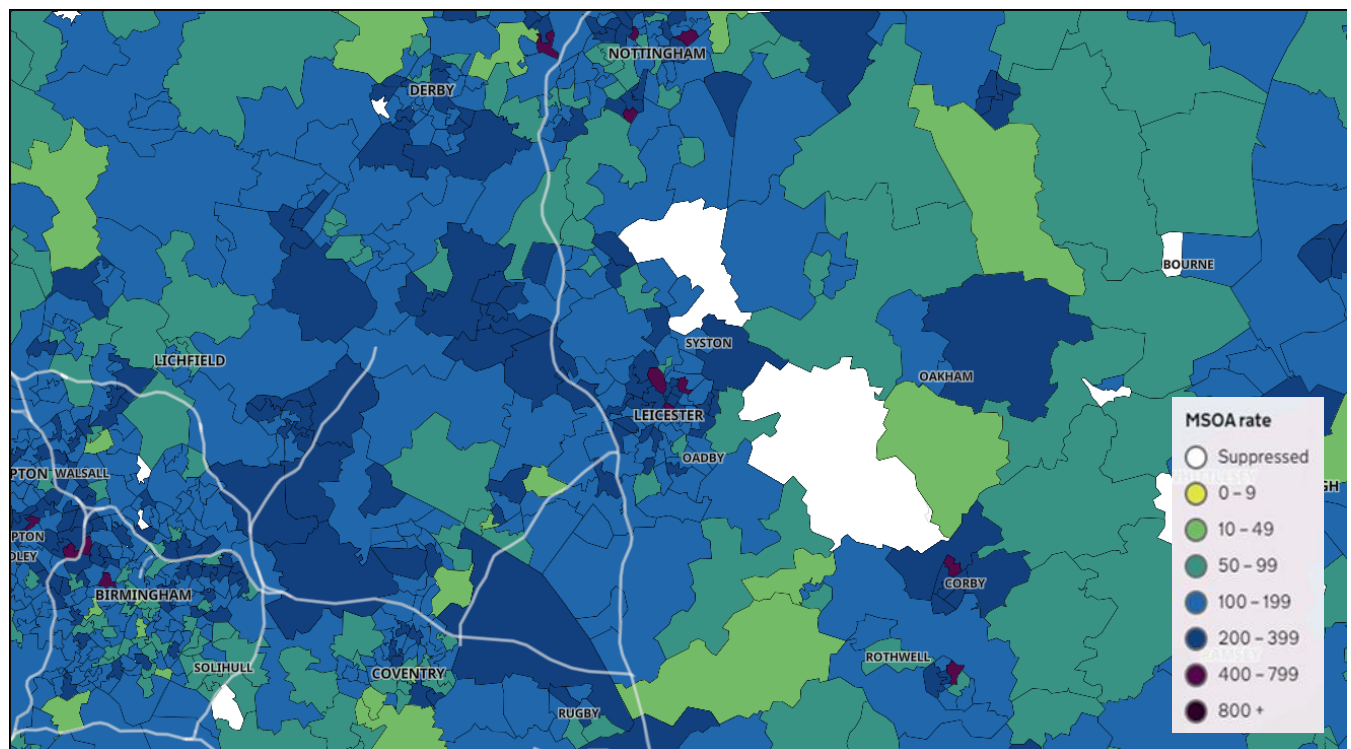
#### 4. Trend in Weekly Incidence Rate (60+) – Leicestershire Districts

- The data for 60+ population shows the rate for Leicestershire is 94.4 per 100,000 population, higher than the national rate of 73.1 per 100,000 population. NWL has the highest rate in the county (118.7 per 100,000 population) followed by Charnwood (116.8), O&W (102.4), Blaby (94.0), H&B (93.9), Melton (59.0), and Harborough (49.1). Compared to the previous week, most districts (apart from Blaby) have decreased like nationally.



Source: PHE Power BI Line Lists

## 5. Weekly Cases by Middle Super Output Area (MSOA)



Source: PHE Coronavirus (COVID-19) in the UK Dashboard

If you require information contained in this leaflet in another version e.g. large print, Braille, tape or alternative language please telephone: 0116 305 6803, Fax: 0116 305 7271 or Minicom: 0116 305 6160.

જો આપ આ માહિતી આપની ભાષામાં સમજવામાં થોડી મદદ ઇચ્છતાં હો તો 0116 305 6803 નંબર પર ફોન કરશો અને અમે આપને મદદ કરવા અવસ્થા કરીશું.

ਜੇਕਰ ਤੁਹਾਨੂੰ ਇਸ ਜਾਣਕਾਰੀ ਨੂੰ ਸਮਝਣ ਵਿਚ ਕੁਝ ਮਦਦ ਚਾਹੀਦੀ ਹੈ ਤਾਂ ਕਿਰਪਾ ਕਰਕੇ 0116 305 6803 ਨੰਬਰ ਤੇ ਫੋਨ ਕਰੋ ਅਤੇ ਅਸੀਂ ਤੁਹਾਡੀ ਮਦਦ ਲਈ ਕਿਸੇ ਦਾ ਪ੍ਰਬੰਧ ਕਰ ਦਵਾਂਗੇ।

এই তথ্য নিজের ভাষায় বুঝার জন্য আপনার যদি কোন সাহায্যের প্রয়োজন হয়, তবে 0116 305 6803 এই নম্বরে ফোন করলে আমরা উপযুক্ত ব্যক্তির ব্যবস্থা করবো।

اگر آپ کو یہ معلومات سمجھنے میں کچھ مدد درکار ہے تو براہ مہربانی اس نمبر پر کال کریں 0116 305 6803 اور ہم آپ کی مدد کے لئے کسی کا انتظام کر دیں گے۔

假如閣下需要幫助，用你的語言去明白這些資訊，請致電 0116 305 6803，我們會安排有關人員為你提供幫助。

Jeżeli potrzebujesz pomocy w zrozumieniu tej informacji w Twoim języku, zadzwoń pod numer 0116 305 6803, a my Ci pomożemy.

## 1 March 2021

Strategic Business Intelligence Team  
Business Intelligence  
Chief Executive's Department  
Leicestershire County Council  
County Hall, Glenfield  
Leicester LE3 8RA

Tel 0116 305 6059  
Email: [Kajal.lad@leics.gov.uk](mailto:Kajal.lad@leics.gov.uk)

Produced by the Strategic Business Intelligence Team at Leicestershire County Council.

Whilst every effort has been made to ensure the accuracy of the information contained within this report, Leicestershire County Council cannot be held responsible for any errors or omission relating to the data contained within the report.