
COVID-19: Data Update for Leicestershire

Period 24 February 2021 to 2 March 2021

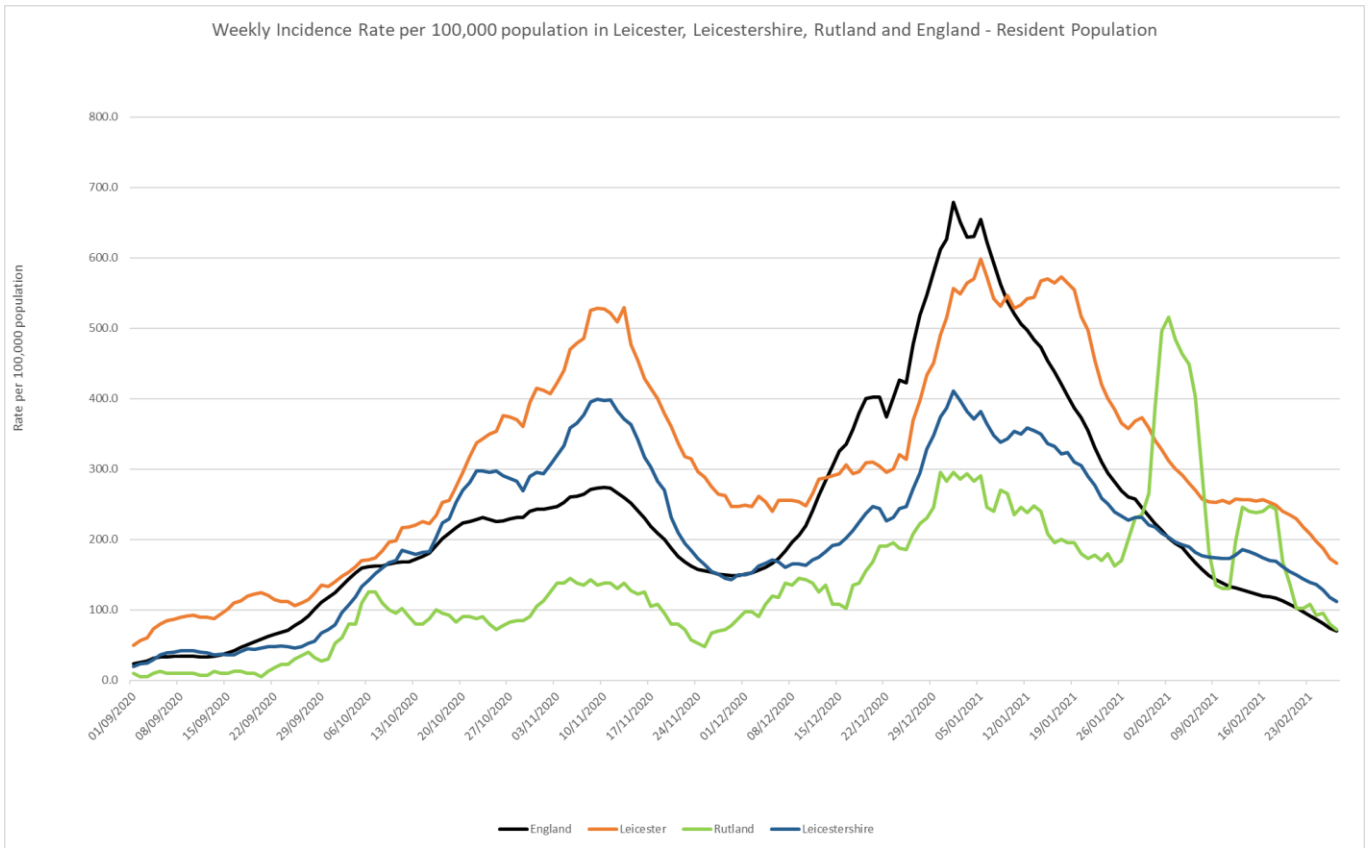
Headline Summary

1. Position Statement from the Director of Public Health for Leicestershire

There has been an encouraging drop of 28% in the Leicestershire case rate in the last seven days with the Leicestershire rate now being within sight of dropping below 100/100,000 population. The rate in Leicestershire is at its lowest since early October, 2020. However, rates overall remain significantly higher than the national average with North West Leicestershire having one of the highest rates in the country. With schools returning today it will be of interest so see how the national and local rates change as the roadmap out of lockdown unfolds.

2. Trend in Weekly Incidence Rate (All ages) – Leicester, Leicestershire, Rutland and England

- The national rate has decreased from 74.4 (period 23rd Feb to 1st Mar) to 69.9 per 100,000 population (period 24th Feb to 2nd Mar). This latest rate reflects a percentage change decrease of 35% compared to the previous 7 day period for England.
- The Leicestershire rate has decreased from 118.2 (period 23rd Feb to 1st Mar) to 111.9 per 100,000 population (period 24th Feb to 2nd Mar). This latest rate reflects a percentage change decrease of 28% compared to the previous 7 day period for Leicestershire. The rate in Leicestershire is higher than the national average.
- The rate for Leicester City stands at 166.0 per 100,000 population and is above the national average. The rate for Rutland stands at 72.6 per 100,000 population and is above the national average.

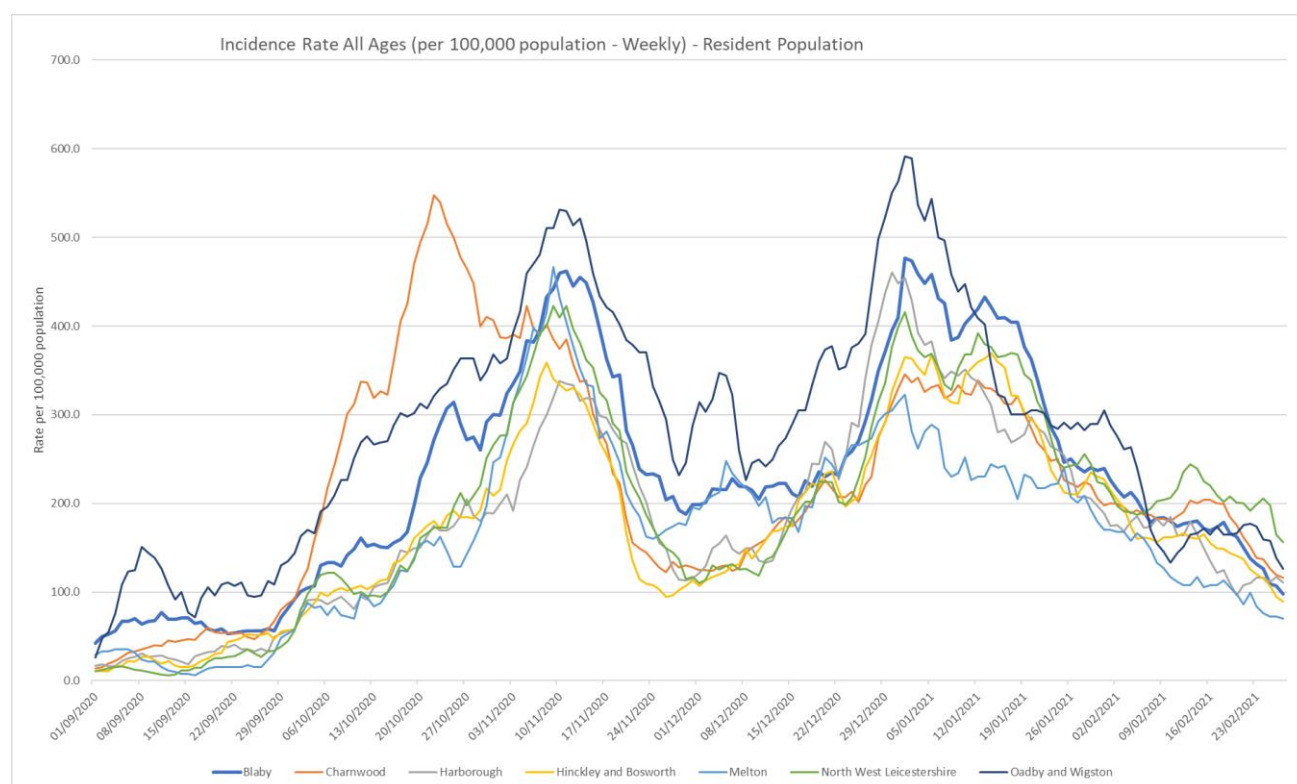


Source: PHE Power BI Line Lists

3. Trend in Weekly Incidence Rate (all ages) – Leicestershire Districts

- NWL has the highest rate in the county (156.4 per 100,000 population) followed by O&W (126.3), Charnwood (116.2), Harborough (110.9), Blaby (97.5), H&B (89.3) and Melton (70.3). Compared to the previous week, most districts (apart from Harborough) have decreased like nationally.

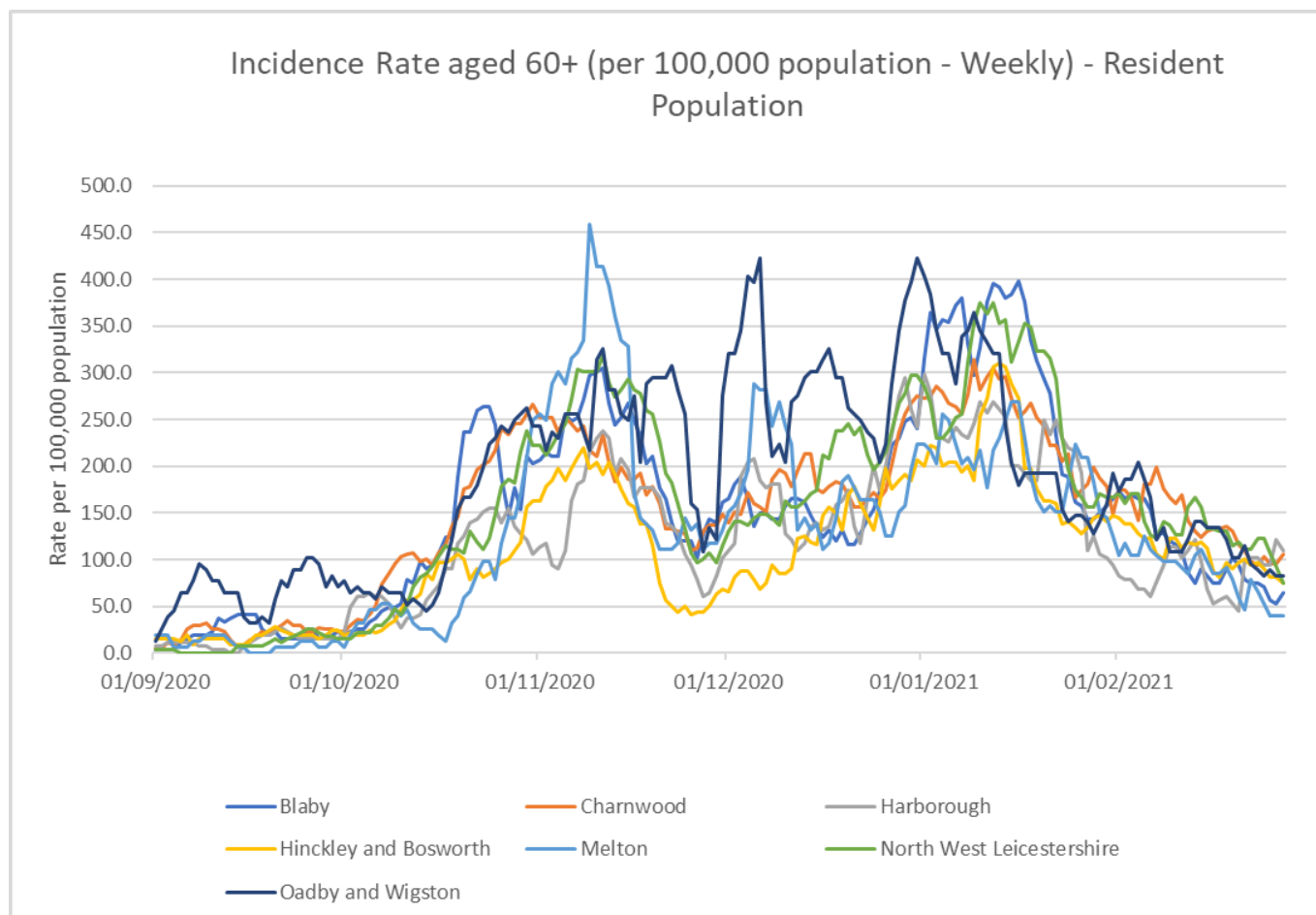
Indicator	Blaby	Charnwood	Harborough	Hinckley & Bosworth	Melton	NW Leicestershire	Oadby and Wigston	Leicestershire	England
Weekly incidence rate per 100,000 population (All Ages)	97.5	116.2	110.9	89.3	70.3	156.4	126.3	111.9	69.9
Weekly count of cases (All Ages)	99	216	104	101	36	162	72	790	39371
Percentage change in cases from previous 7 days (All Ages)	-40%	-34%	16%	-36%	-28%	-22%	-24%	-28%	-35%
Weekly incidence rate per 100,000 population (60+)	63.9	105.3	109.6	75.1	39.4	74.2	83.2	83.1	45.4
Percentage individuals testing positive (weekly)	6.1%	6.2%	5.9%	4.6%	3.1%	8.2%	4.3%		3.1%



Source: PHE Power BI Line Lists

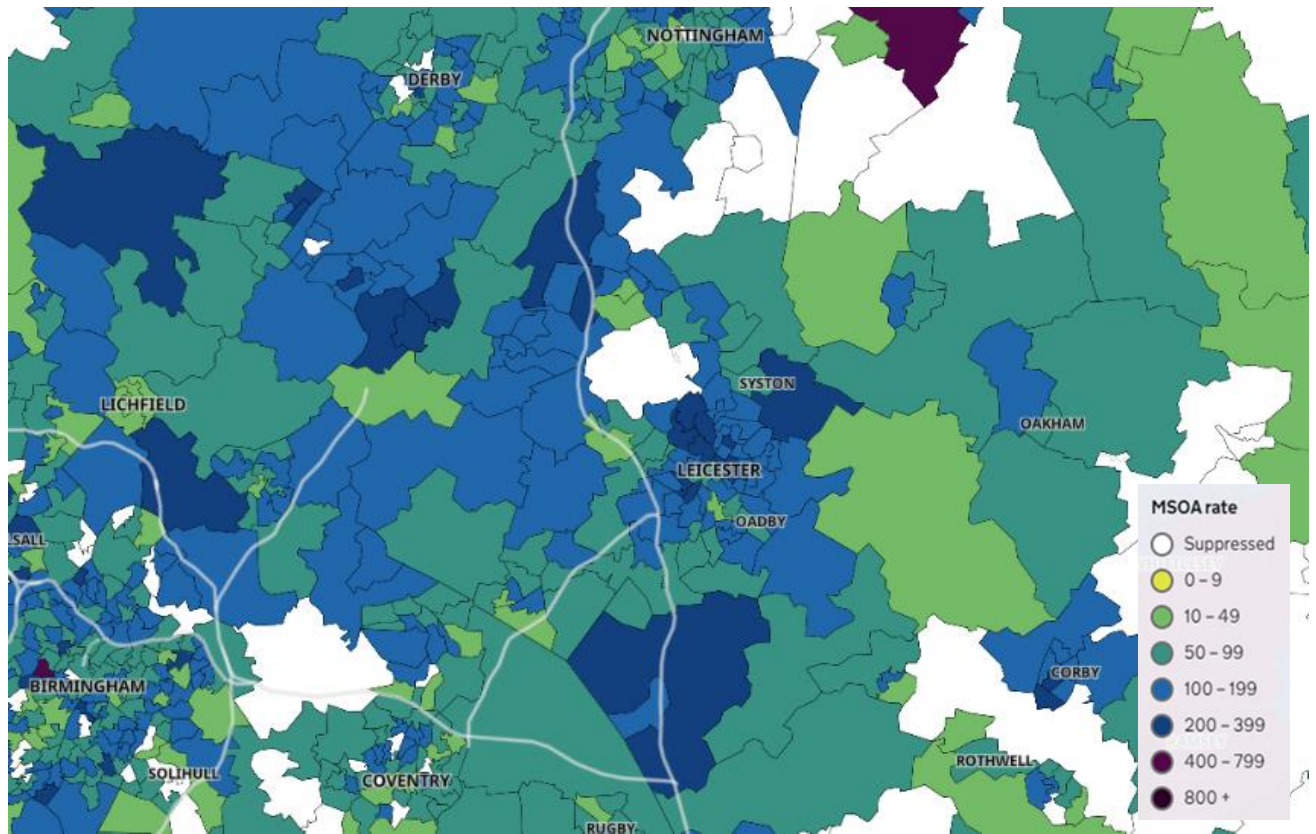
4. Trend in Weekly Incidence Rate (60+) – Leicestershire Districts

- The data for 60+ population shows the rate for Leicestershire is 83.1 per 100,000 population, higher than the national rate of 45.4 per 100,000 population. Harborough has the highest rate in the county (109.6 per 100,000 population) followed by Charnwood (105.3), O&W (83.2), H&B (75.1), NWL (74.2), Blaby (63.9) and Melton (39.4). Compared to the previous week, most districts (apart from Harborough) have decreased like nationally.



Source: PHE Power BI Line Lists

5. Weekly Cases by Middle Super Output Area (MSOA)



Source: PHE Coronavirus (COVID-19) in the UK Dashboard

If you require information contained in this leaflet in another version e.g. large print, Braille, tape or alternative language please telephone: 0116 305 6803, Fax: 0116 305 7271 or Minicom: 0116 305 6160.

ਜੇ ਆਪ ਆ ਮਾਭਿਨੀ ਆਪਨੀ ਆਖਾਮਾਂ ਸਮਝਵਾਮਾਂ ਥੀਓ ਮਦਦ
ਓਝੜਨਾਂ ਡੇ ਤੇ 0116 305 6803 ਨੰਬਰ ਪਰ ਫ਼ੋਨ ਕਰਓ ਅਤੇ
ਅਮੇ ਆਪਨੇ ਮਦਦ ਕਰਵਾ ਅਵਸਥਾ ਕਰੀਓ.

ਜੇਕਰ ਤੁਹਾਨੂੰ ਇਸ ਜਾਣਕਾਰੀ ਨੂੰ ਸਮਝਣ ਵਿਚ ਕੁਝ ਮਦਦ ਚਾਹੀਦੀ
ਹੈ ਤਾਂ ਕਿਰਪਾ ਕਰਕੇ 0116 305 6803 ਨੰਬਰ ਤੇ ਫ਼ੋਨ ਕਰੋ ਅਤੇ
ਅਸੀਂ ਤੁਹਾਡੀ ਮਦਦ ਲਈ ਕਿਸੇ ਦਾ ਪ੍ਰਬੰਧ ਕਰ ਦਵਾਂਗੇ।

এই তথ্য নিজের ভাষায় বুঝার জন্য আপনার যদি কোন
সাহায্যের প্রয়োজন হয়, তবে 0116 305 6803 এই নম্বরে
ফোন করলে আমরা উপযুক্ত ব্যক্তির ব্যবস্থা করবো।

اگر آپ کو یہ معلومات سمجھنے میں کچھ مدد درکار ہے تو براہ مہربانی اس نمبر پر کال کریں
0116 305 6803 اور ہم آپ کی مدد کے لئے کسی کا انتظام کر دیں گے۔

假如閣下需要幫助，用你的語言去明白這些資訊，
請致電 0116 305 6803，我們會安排有關人員為你
提供幫助。

Jeżeli potrzebujesz pomocy w zrozumieniu tej informacji
w Twoim języku, zadzwoń pod numer 0116 305 6803,
a my Ci pomożemy.

8 March 2021

Strategic Business Intelligence Team
Business Intelligence
Chief Executive's Department
Leicestershire County Council
County Hall, Glenfield
Leicester LE3 8RA

Tel: 0116 305 6059
Email: Kajal.lad@leics.gov.uk

Produced by the Strategic Business Intelligence Team at Leicestershire County Council.

Whilst every effort has been made to ensure the accuracy of the information contained within this report, Leicestershire County Council cannot be held responsible for any errors or omission relating to the data contained within the report.