

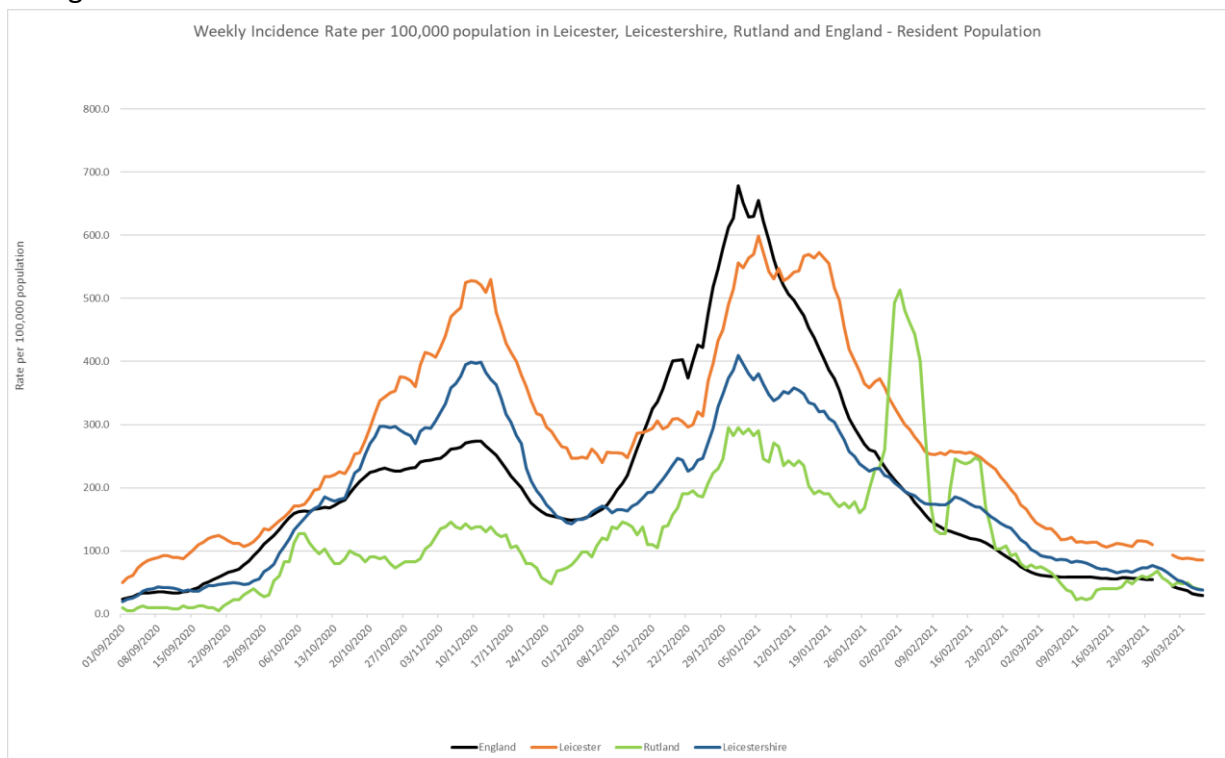
COVID-19: Data Update for Leicestershire

Period 31 March 2021 to 6 April 2021

Headline Summary

1. Trend in Weekly Incidence Rate (All ages) – Leicester, Leicestershire, Rutland and England

- The national rate has decreased from 30.1 (period 30th Mar to 5th Apr) to 29.3 per 100,000 population (period 31st Mar to 6th Apr). This latest rate reflects a percentage change decrease of 38% compared to the previous 7 day period for England.
- The Leicestershire rate has decreased from 39.1 (period 30th Mar to 5th Apr) to 37.7 per 100,000 population (period 31st Mar to 6th Apr). This latest rate reflects a percentage change decrease of 43% compared to the previous 7 day period for Leicestershire. The rate in Leicestershire is higher than the national average.
- The rate for Leicester City stands at 85.5 per 100,000 population and is above the national average. The rate for Rutland stands at 37.6 per 100,000 population and is above the national average.

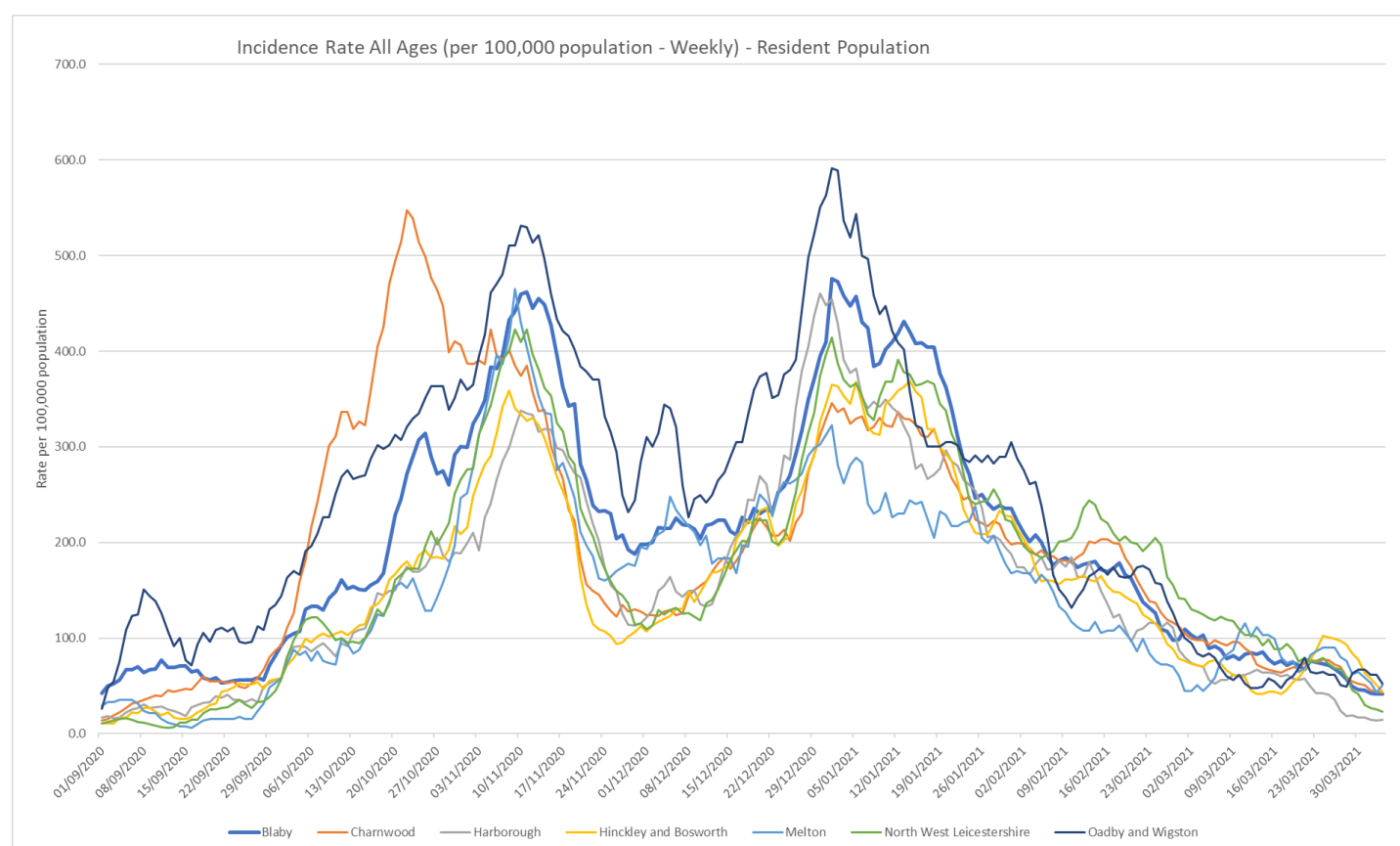


Source: PHE Power BI Line Lists

2. Trend in Weekly Incidence Rate (all ages) – Leicestershire Districts

- O&W has the highest rate in the county (52.6 per 100,000 population) followed by Melton (50.8), H&B (44.2), Charnwood (43.0), Blaby (41.4), NWL (23.2) and Harborough (14.9). Compared to the previous week, most districts (apart from O&W) have decreased like nationally.

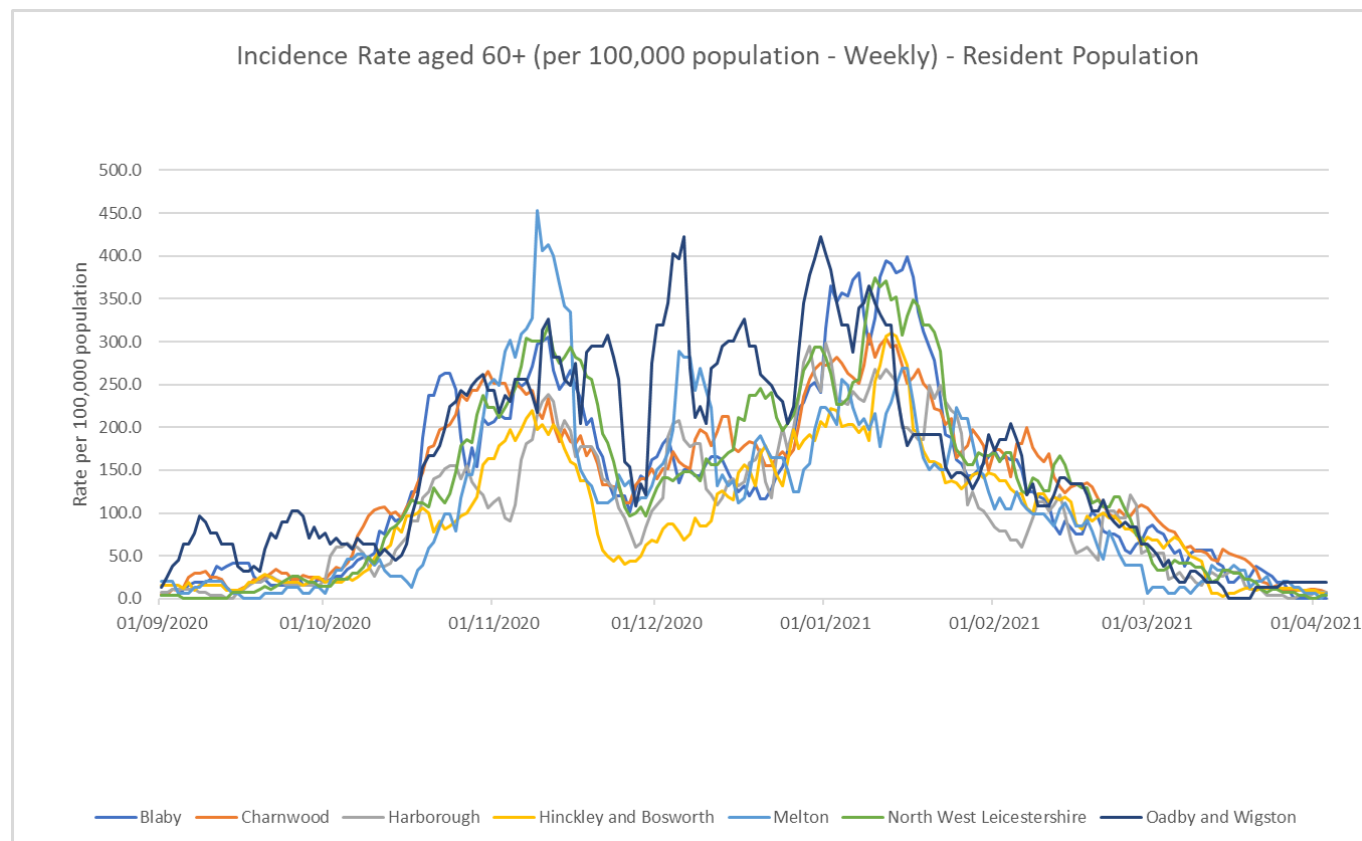
Indicator	Blaby	Charnwood	Harborough	Hinckley & Bosworth	Melton	NW Leicestershire	Oadby and Wigston	Leicestershire	England
Weekly incidence rate per 100,000 population (All Ages)	41.4	43.0	14.9	44.2	50.8	23.2	52.6	37.7	29.3
Weekly count of cases (All Ages)	42	80	14	50	26	24	30	266	16489
Percentage change in cases from previous 7 days (All Ages)	-34%	-38%	-36%	-55%	-37%	-66%	3%	-43%	-38%
Weekly incidence rate per 100,000 population (60+)	0.0	6.9	7.6	6.3	6.6	3.7	19.2	6.4	10.8
Percentage individuals testing positive (weekly)	3.1%	2.8%	0.9%	2.8%	3.3%	1.7%	2.2%		1.5%



Source: PHE Power BI Line Lists

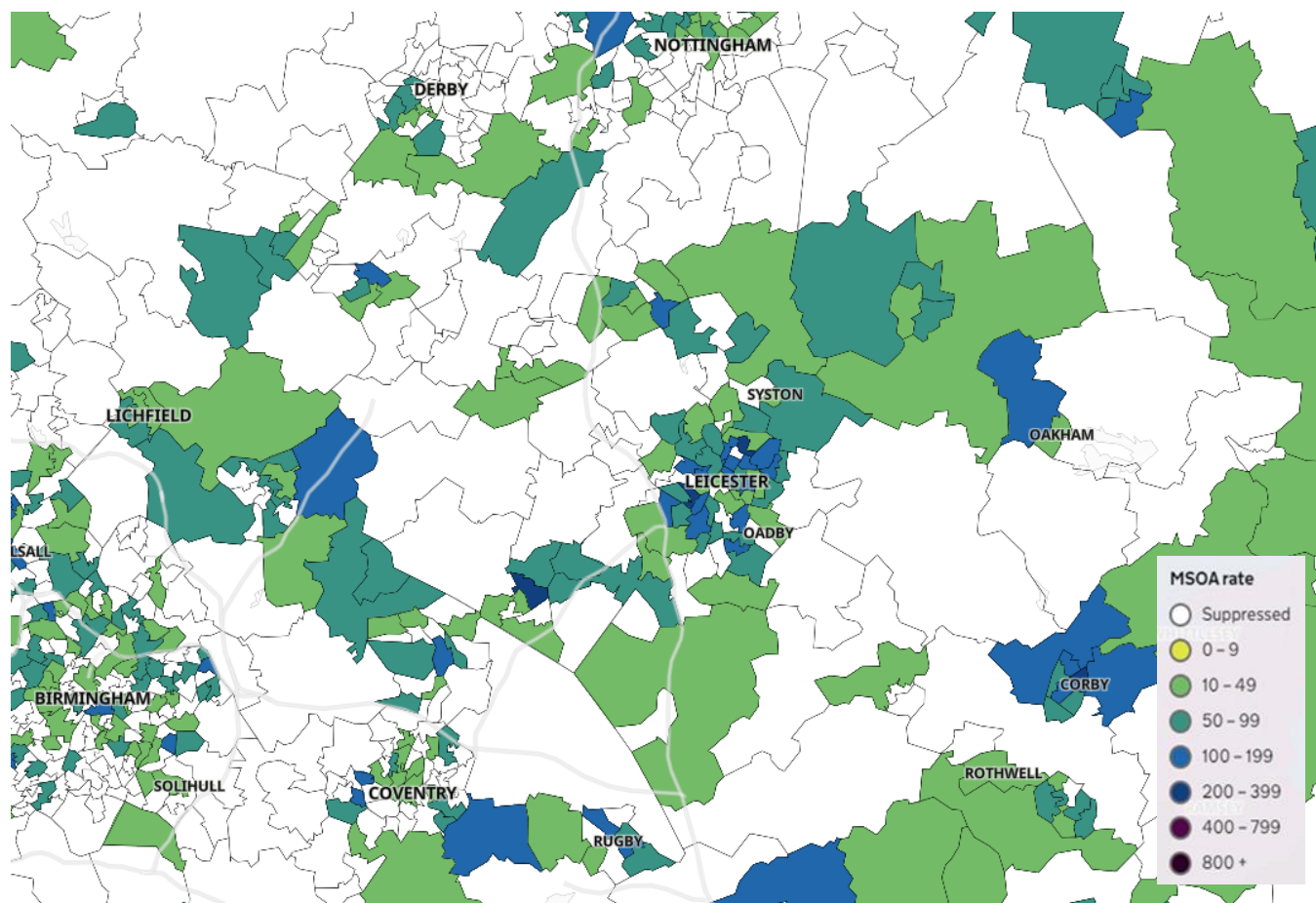
3. Trend in Weekly Incidence Rate (60+) – Leicestershire Districts

- The data for 60+ population shows the rate for Leicestershire is 6.4 per 100,000 population, lower than the national rate of 10.8 per 100,000 population. O&W has the highest rate in the county (19.2 per 100,000 population) followed by Harborough (7.6), Charnwood (6.9), Melton (6.6), H&B (6.3), NWL (3.7) and Blaby (0.0). Compared to the previous week, most districts (apart from Harborough and O&W) have decreased like nationally.



Source: PHE Power BI Line Lists

4. Weekly Cases by Middle Super Output Area (MSOA)



Source: PHE Coronavirus (COVID-19) in the UK Dashboard

If you require information contained in this leaflet in another version e.g. large print, Braille, tape or alternative language please telephone: 0116 305 6803, Fax: 0116 305 7271 or Minicom: 0116 305 6160.

જો આપ આ માહિતી આપની ભાષામાં સમજવામાં થોડી મદદ ઇચ્છતાં હો તો 0116 305 6803 નંબર પર ફોન કરશો અને અમે આપને મદદ કરવા અવસ્થા કરીશું.

ਜੇਕਰ ਤੁਹਾਨੂੰ ਇਸ ਜਾਣਕਾਰੀ ਨੂੰ ਸਮਝਣ ਵਿਚ ਕੁਝ ਮਦਦ ਚਾਹੀਦੀ ਹੈ ਤਾਂ ਕਿਰਪਾ ਕਰਕੇ 0116 305 6803 ਨੰਬਰ ਤੇ ਫੋਨ ਕਰੋ ਅਤੇ ਅਸੀਂ ਤੁਹਾਡੀ ਮਦਦ ਲਈ ਕਿਸੇ ਦਾ ਪ੍ਰਬੰਧ ਕਰ ਦਵਾਂਗੇ।

এই তথ্য নিজের ভাষায় বুঝার জন্য আপনার যদি কোন সাহায্যের প্রয়োজন হয়, তবে 0116 305 6803 এই নম্বরে ফোন করলে আমরা উপযুক্ত ব্যক্তির ব্যবস্থা করবো।

اگر آپ کو یہ معلومات سمجھنے میں کچھ مدد درکار ہے تو براہ مہربانی اس نمبر پر کال کریں 0116 305 6803 اور ہم آپ کی مدد کے لئے کسی کا انتظام کر دیں گے۔

假如閣下需要幫助，用你的語言去明白這些資訊，請致電 0116 305 6803，我們會安排有關人員為你提供幫助。

Jeżeli potrzebujesz pomocy w zrozumieniu tej informacji w Twoim języku, zadzwoń pod numer 0116 305 6803, a my Ci pomożemy.

12 April 2021

Strategic Business Intelligence Team
Business Intelligence
Chief Executive's Department
Leicestershire County Council
County Hall, Glenfield
Leicester LE3 8RA

Tel 0116 305 6059
Email: Kajal.lad@leics.gov.uk

Produced by the Strategic Business Intelligence Team at Leicestershire County Council.

Whilst every effort has been made to ensure the accuracy of the information contained within this report, Leicestershire County Council cannot be held responsible for any errors or omission relating to the data contained within the report.