

COVID-19: Data Update for Leicestershire

Period 7 April 2021 to 13 April 2021

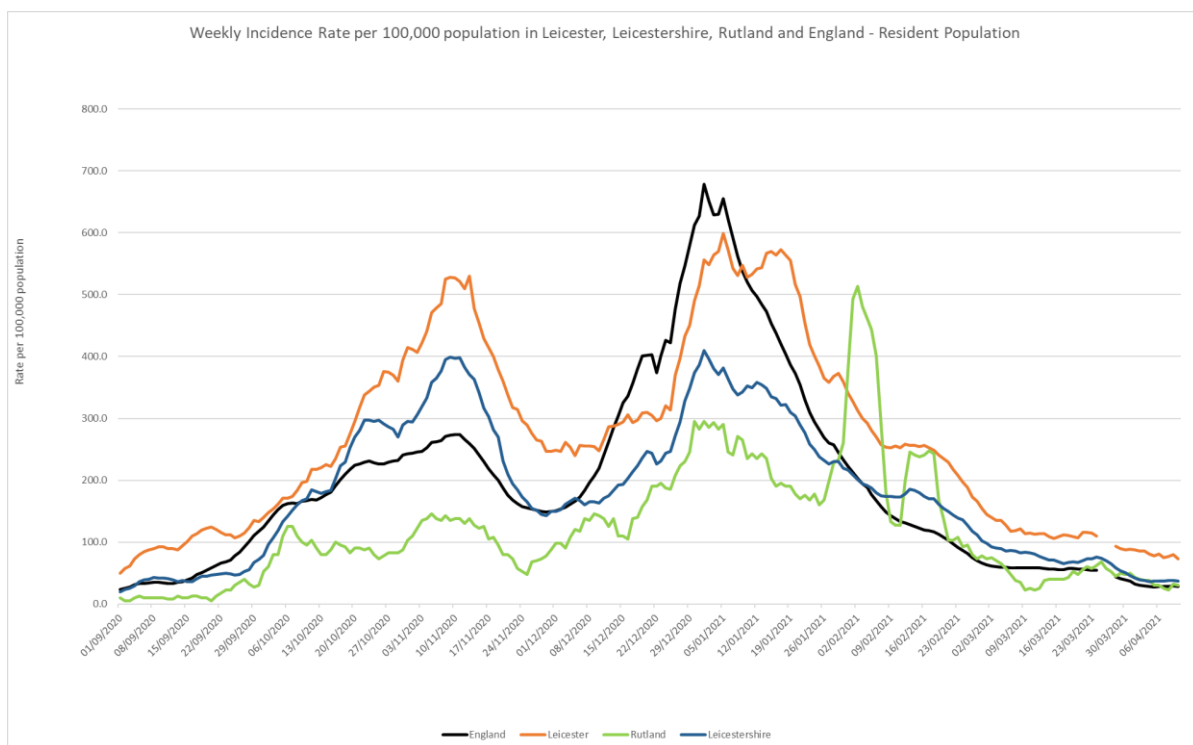
Headline Summary

1. Position Statement from the Director of Public Health for Leicestershire

Rates have continued to decline albeit at a slower rate, although there has been a significant increase in Melton in the last week. This week's figures will be important as the data reporting period will begin to show an effect for the April 12th easements.

2. Trend in Weekly Incidence Rate (All ages) – Leicester, Leicestershire, Rutland and England

- The national rate has decreased from 29.0 (period 6th Apr to 12th Apr) to 27.9 per 100,000 population (period 7th Apr to 13th Apr). This latest rate reflects a percentage change decrease of 5% compared to the previous 7 day period for England.
- The Leicestershire rate has decreased from 37.8 (period 6th Apr to 12th Apr) to 37.1 per 100,000 population (period 7th Apr to 13th Apr). This latest rate reflects a percentage change decrease of 2% compared to the previous 7 day period for Leicestershire. The rate in Leicestershire is higher than the national average.
- The rate for Leicester City stands at 72.8 per 100,000 population and is above the national average. The rate for Rutland stands at 30.1 per 100,000 population and is above the national average.

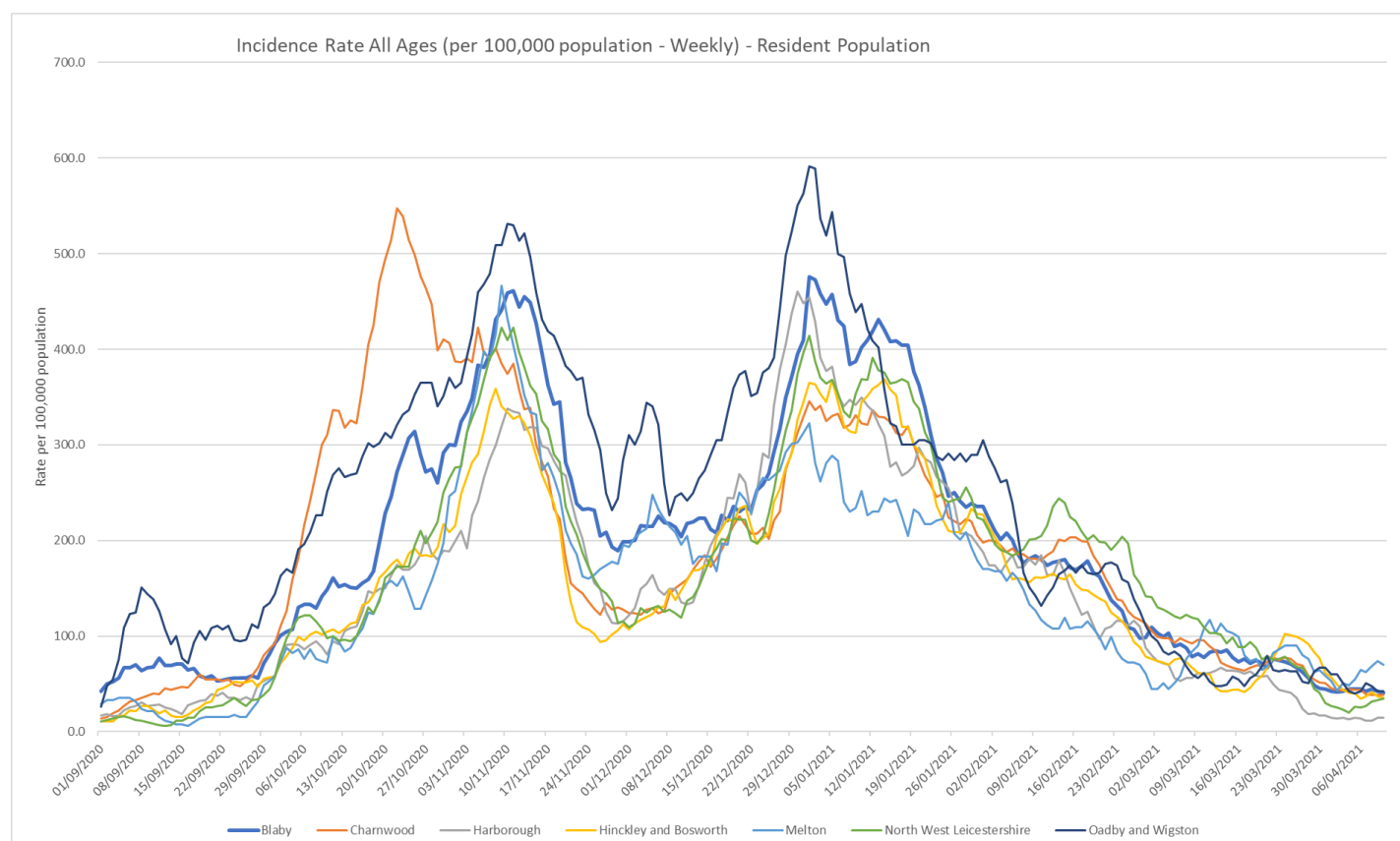


Source: PHE Power BI Line Lists

3. Trend in Weekly Incidence Rate (all ages) – Leicestershire Districts

- Melton has the highest rate in the county (70.3 per 100,000 population, 36 cases) followed by O&W (42.1, 24 cases), Blaby (40.4, 41 cases), Charnwood (38.2, 71 cases), H&B (35.4, 40 cases), NWL (34.7, 36 cases) and Harborough (14.9, 14 cases). Compared to the previous week, most districts (apart from Harborough, Melton and NWL) have decreased like nationally.

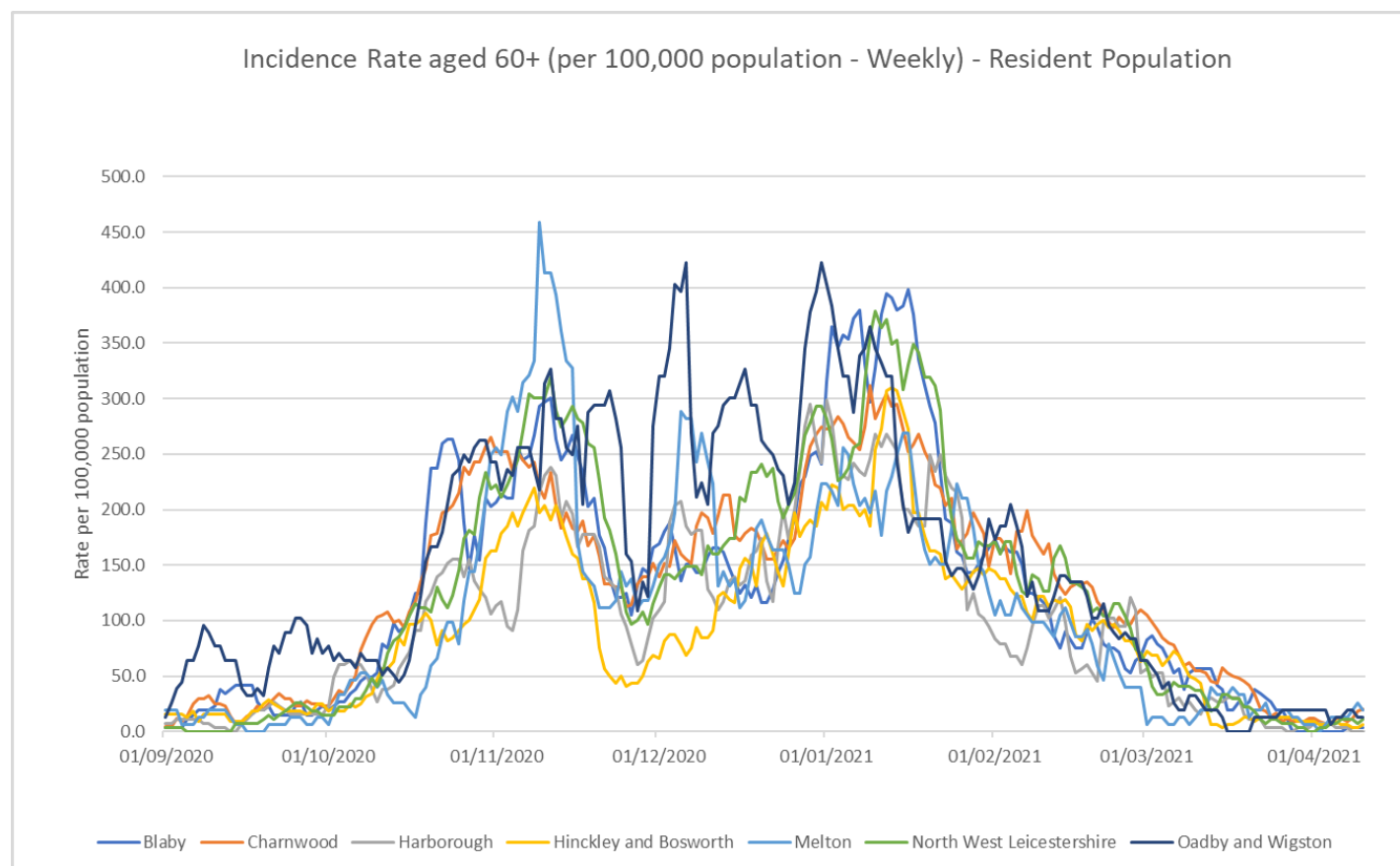
Indicator	Blaby	Charnwood	Harborough	Hinckley & Bosworth	Melton	NW Leicestershire	Oadby and Wigston	Leicestershire	England
Weekly incidence rate per 100,000 population (All Ages)	40.4	38.2	14.9	35.4	70.3	34.7	42.1	37.1	27.9
Weekly count of cases (All Ages)	41	71	14	40	36	36	24	262	15701
Percentage change in cases from previous 7 days (All Ages)	-5%	-11%	0%	-20%	38%	50%	-17%	-2%	-5%
Weekly incidence rate per 100,000 population (60+)	3.8	20.6	0.0	6.3	19.7	11.1	12.8	10.7	11.4
Weekly count of cases (60+)	1	9	0	2	3	3	2	20	1526
Percentage individuals testing positive (weekly)	2.8%	2.0%	0.8%	1.4%	3.2%	2.0%	1.5%		1.2%



Source: PHE Power BI Line Lists

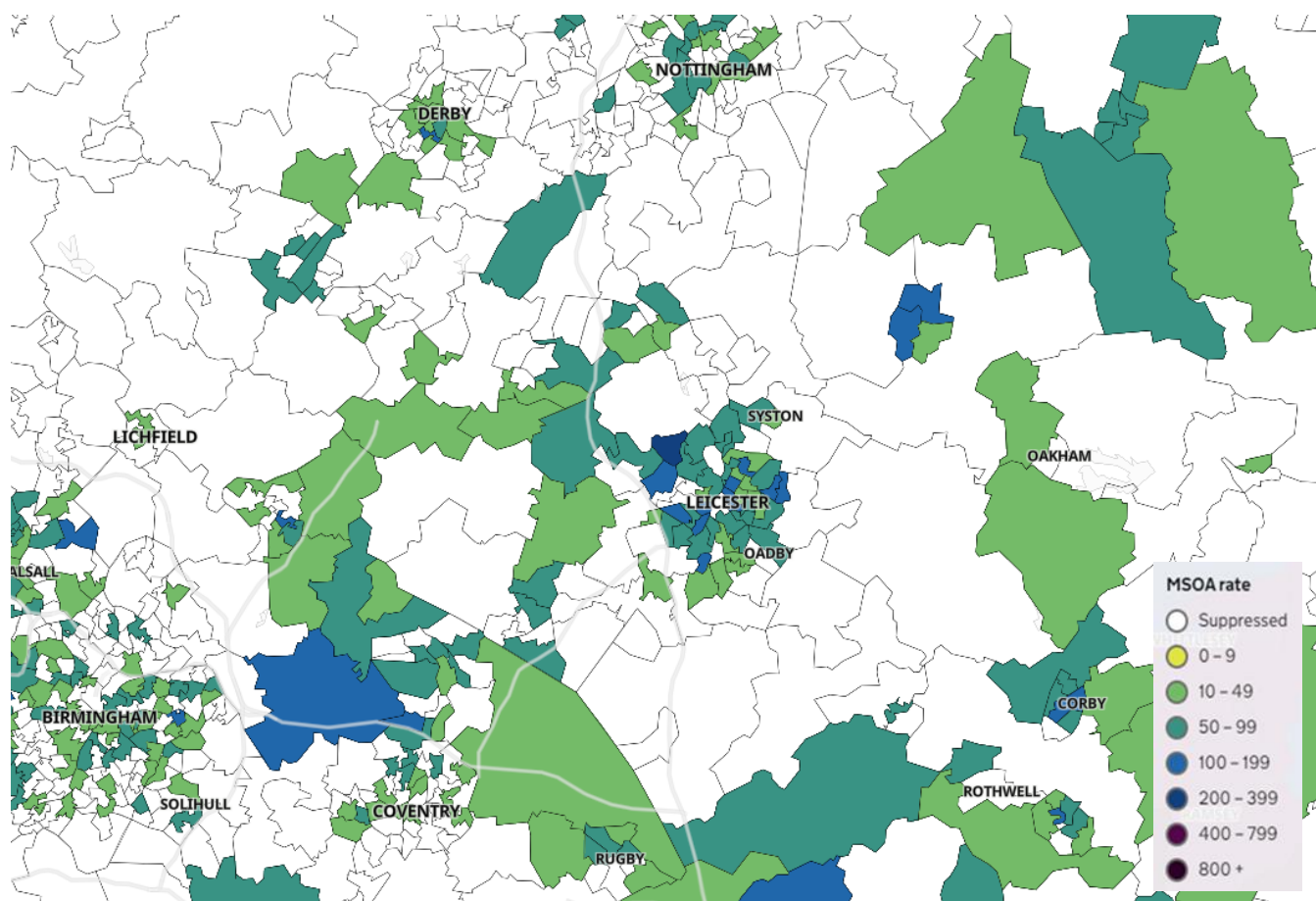
4. Trend in Weekly Incidence Rate (60+) – Leicestershire Districts

- The data for 60+ population shows the rate for Leicestershire is 10.7 per 100,000 population, lower than the national rate of 11.4 per 100,000 population. Charnwood has the highest rate in the county (20.6 per 100,000 population, 9 cases) followed by Melton (19.7, 3 cases), O&W (12.8, 2 cases), NWL (11.1, 3 cases), H&B (6.3, 2 cases), Blaby (3.8, 1 case), and Harborough (0.0, 0 cases). Compared to the previous week, most districts (apart from Harborough, H&B and O&W) have increased like nationally.



Source: PHE Power BI Line Lists

5. Weekly Cases by Middle Super Output Area (MSOA)



Source: PHE Coronavirus (COVID-19) in the UK Dashboard

If you require information contained in this leaflet in another version e.g. large print, Braille, tape or alternative language please telephone: 0116 305 6803, Fax: 0116 305 7271 or Minicom: 0116 305 6160.

જો આપ આ માહિતી આપની ભાષામાં સમજવામાં થોડી મદદ ઇચ્છતાં હો તો 0116 305 6803 નંબર પર ફોન કરશો અને અમે આપને મદદ કરવા અવસ્થા કરીશું.

ਜੇਕਰ ਤੁਹਾਨੂੰ ਇਸ ਜਾਣਕਾਰੀ ਨੂੰ ਸਮਝਣ ਵਿਚ ਕੁਝ ਮਦਦ ਚਾਹੀਦੀ ਹੈ ਤਾਂ ਕਿਰਪਾ ਕਰਕੇ 0116 305 6803 ਨੰਬਰ ਤੇ ਫੋਨ ਕਰੋ ਅਤੇ ਅਸੀਂ ਤੁਹਾਡੀ ਮਦਦ ਲਈ ਕਿਸੇ ਦਾ ਪ੍ਰਬੰਧ ਕਰ ਦਵਾਂਗੇ।

এই তথ্য নিজের ভাষায় বুঝার জন্য আপনার যদি কোন সাহায্যের প্রয়োজন হয়, তবে 0116 305 6803 এই নম্বরে ফোন করলে আমরা উপযুক্ত ব্যক্তির ব্যবস্থা করবো।

اگر آپ کو یہ معلومات سمجھنے میں کچھ مدد درکار ہے تو براہ مہربانی اس نمبر پر کال کریں 0116 305 6803 اور ہم آپ کی مدد کے لئے کسی کا انتظام کر دیں گے۔

假如閣下需要幫助，用你的語言去明白這些資訊，請致電 0116 305 6803，我們會安排有關人員為你提供幫助。

Jeżeli potrzebujesz pomocy w zrozumieniu tej informacji w Twoim języku, zadzwoń pod numer 0116 305 6803, a my Ci pomożemy.

19 April 2021

Strategic Business Intelligence Team
Business Intelligence
Chief Executive's Department
Leicestershire County Council
County Hall, Glenfield
Leicester LE3 8RA

Tel 0116 305 6059
Email: Kajal.lad@leics.gov.uk

Produced by the Strategic Business Intelligence Team at Leicestershire County Council.

Whilst every effort has been made to ensure the accuracy of the information contained within this report, Leicestershire County Council cannot be held responsible for any errors or omission relating to the data contained within the report.