

COVID-19: Data Update for Leicestershire

Period 14 April 2021 to 20 April 2021

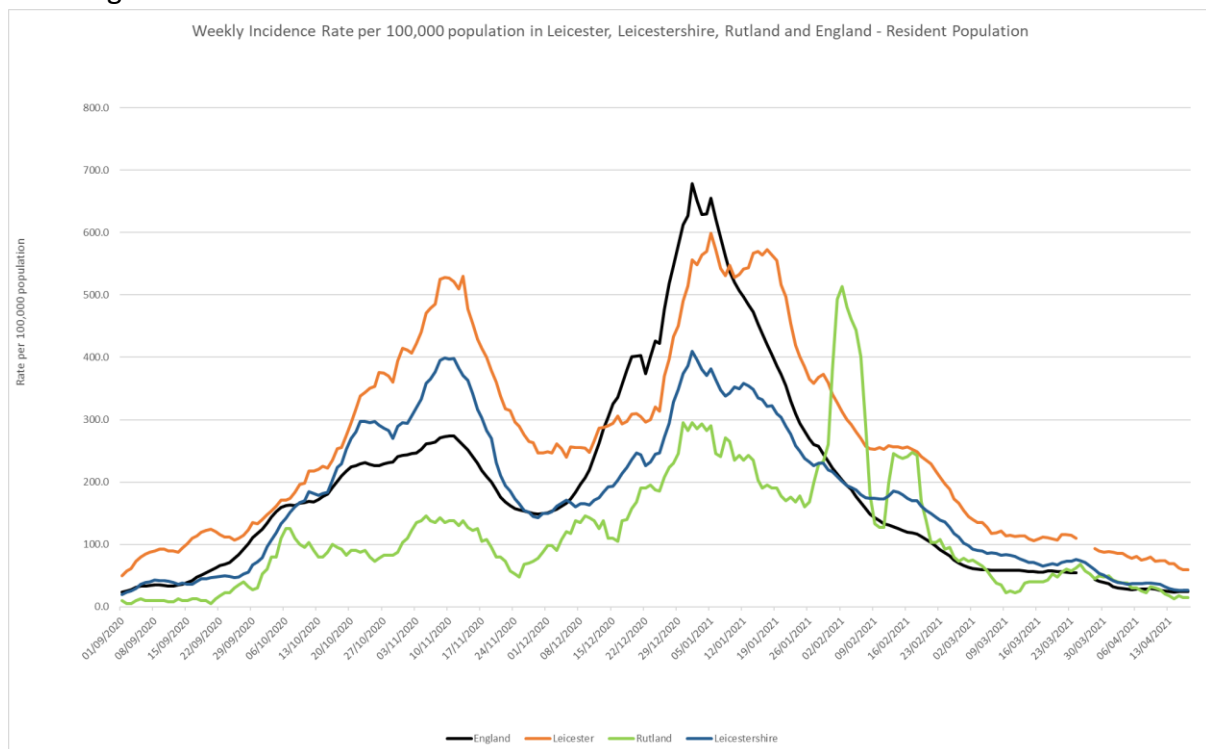
Headline Summary

1. Position Statement from the Director of Public Health for Leicestershire

The overall rate in Leicestershire continues to decline, albeit recognising that we are seeing some cases in schools which lie behind the increase in Harborough in the last couple of days.

2. Trend in Weekly Incidence Rate (All ages) – Leicester, Leicestershire, Rutland and England

- The national rate has decreased from 24.5 (period 13th Apr to 19th Apr) to 24.4 per 100,000 population (period 14th Apr to 20th Apr). This latest rate reflects a percentage change decrease of 12% compared to the previous 7 day period for England.
- The Leicestershire rate has increased from 26.3 (period 13th Apr to 19th Apr) to 26.6 per 100,000 population (period 14th Apr to 20th Apr). This latest rate reflects a percentage change decrease of 28% compared to the previous 7 day period for Leicestershire. The rate in Leicestershire is higher than the national average.
- The rate for Leicester City stands at 59.3 per 100,000 population and is above the national average. The rate for Rutland stands at 15.0 per 100,000 population and is below the national average.

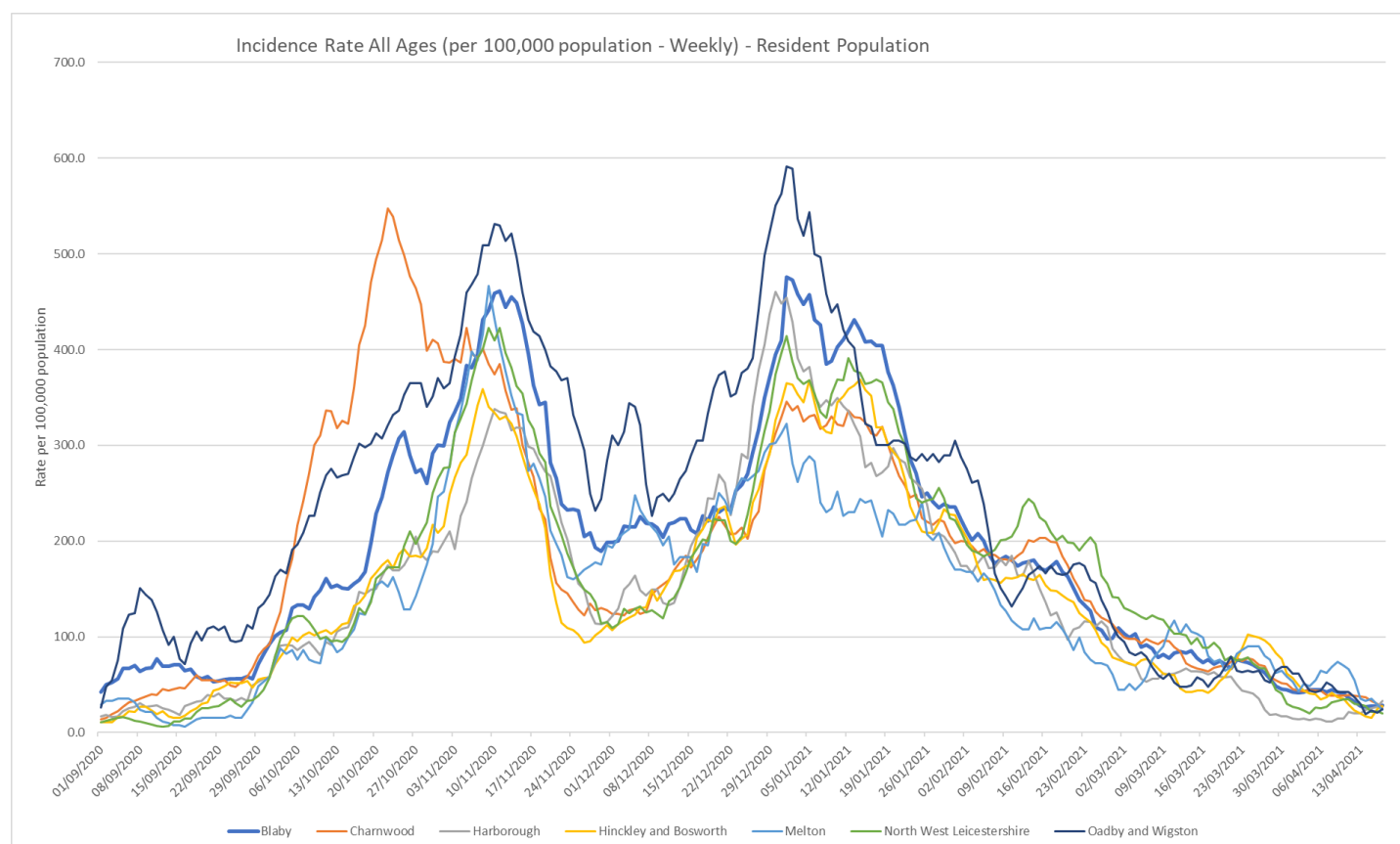


Source: PHE Power BI Line Lists

3. Trend in Weekly Incidence Rate (all ages) – Leicestershire Districts

- Harborough has the highest rate in the county (33.0 per 100,000 population, 31 cases) followed by Blaby (28.6, 29 cases), H&B (27.4, 31 cases), Charnwood (26.9, 50 cases), O&W (24.6, 14 cases), Melton (23.4, 12 cases) and NWL (20.3, 21 cases). Compared to the previous week, most districts (apart from Harborough) have decreased like nationally.

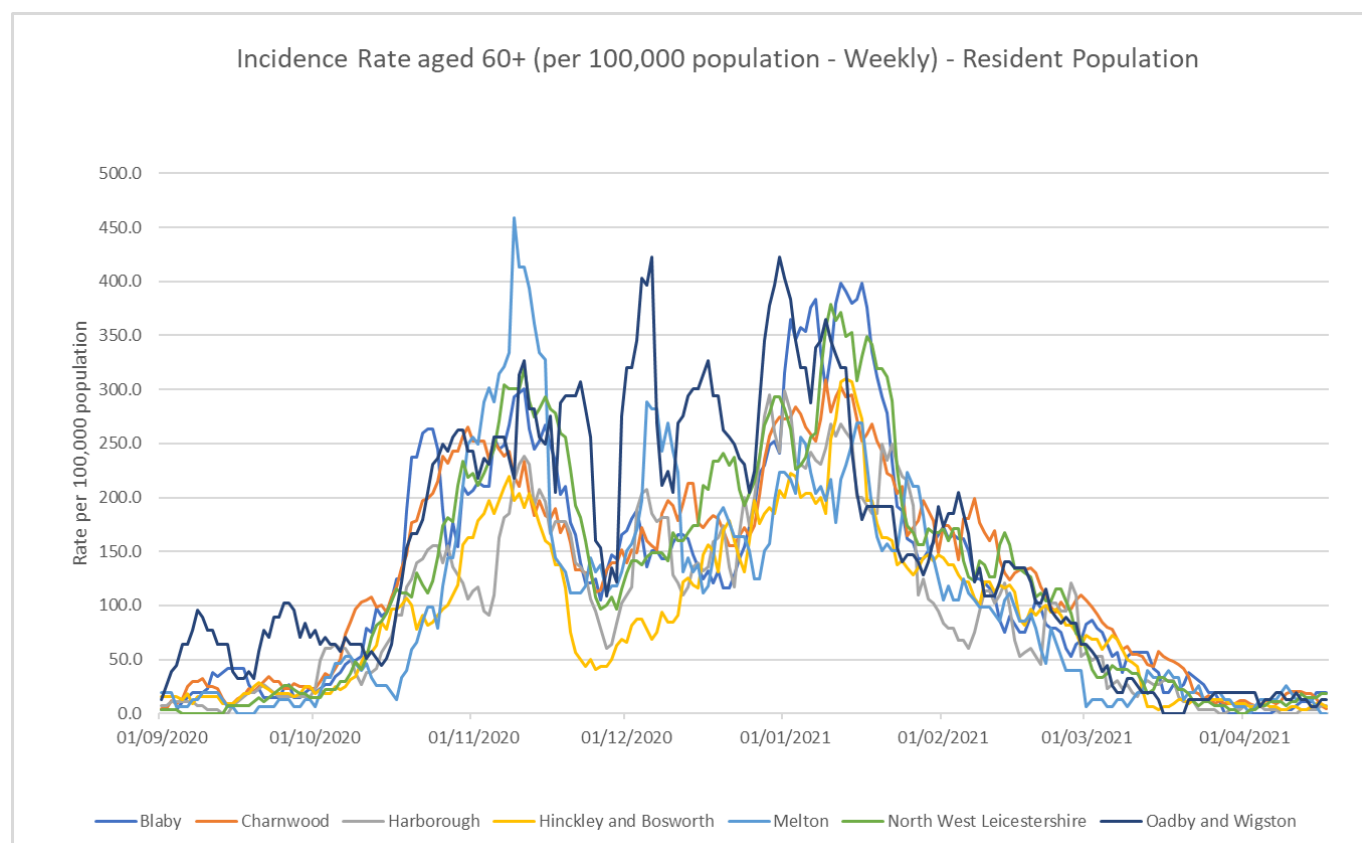
Indicator	Blaby	Charnwood	Harborough	Hinckley & Bosworth	Melton	NW Leicestershire	Oadby and Wigston	Leicestershire	England
Weekly incidence rate per 100,000 population (All Ages)	28.6	26.9	33.0	27.4	23.4	20.3	24.6	26.6	24.4
Weekly count of cases (All Ages)	29	50	31	31	12	21	14	188	13746
Percentage change in cases from previous 7 days (All Ages)	-29%	-30%	121%	-23%	-67%	-42%	-42%	-28%	-12%
Weekly incidence rate per 100,000 population (60+)	18.8	4.6	7.6	6.3	0.0	18.6	12.8	9.7	9.6
Weekly count of cases (60+)	5	2	2	2	0	5	2	18	1526
Percentage individuals testing positive (weekly)	1.1%	1.4%	1.7%	0.9%	0.9%	0.5%	0.9%		0.8%



Source: PHE Power BI Line Lists

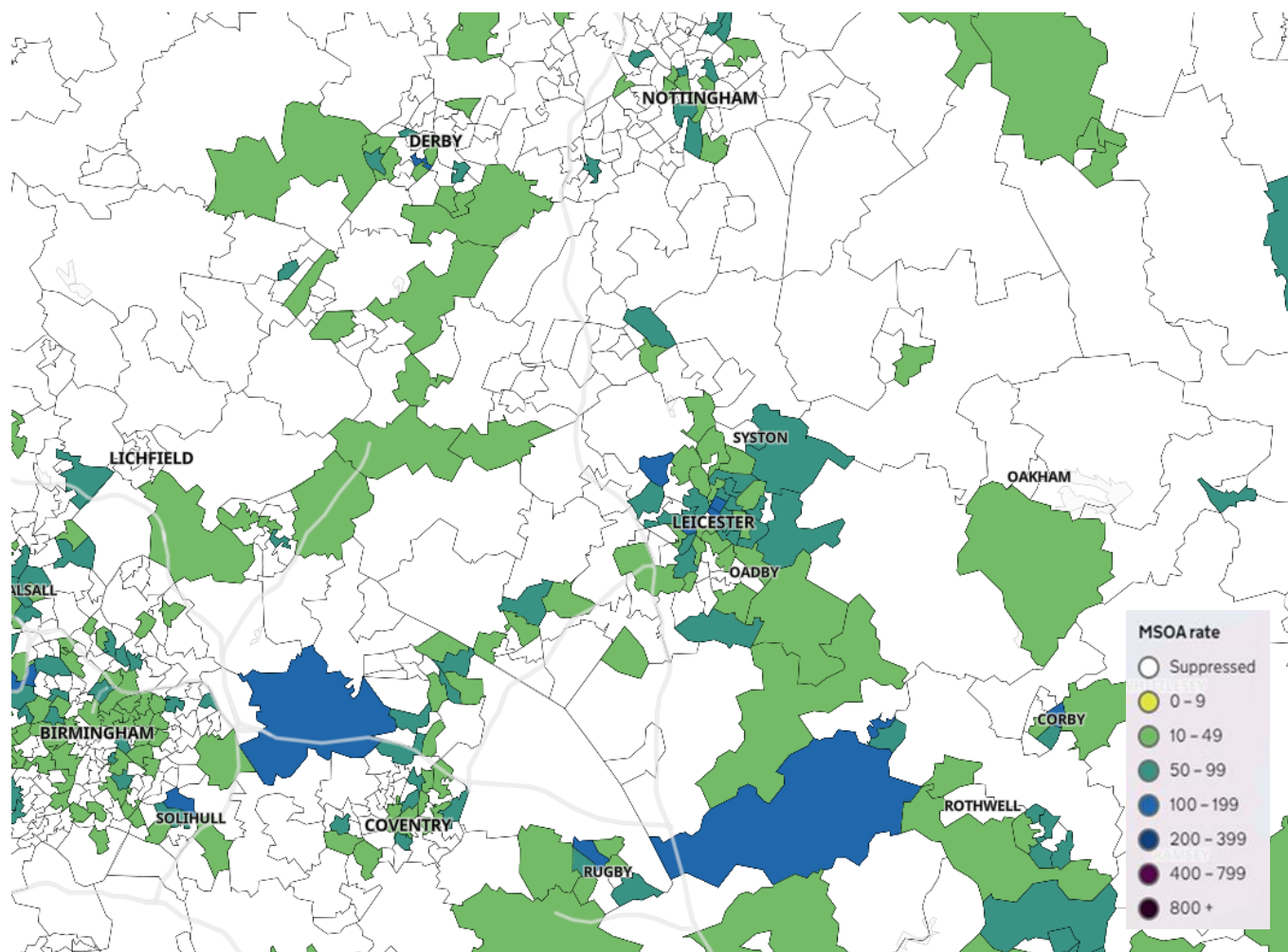
4. Trend in Weekly Incidence Rate (60+) – Leicestershire Districts

- The data for 60+ population show the rate for Leicestershire is 9.7 per 100,000 population, higher than the national rate of 9.6 per 100,000 population. Blaby has the highest rate in the county (18.8 per 100,000 population, 5 cases) followed by NWL (18.6, 5 cases), O&W (12.8, 2 cases), Harborough (7.6, 2 cases), H&B (6.3, 2 cases), Charnwood (4.6, 2 cases) and Melton (0.0, 0 cases). Compared to the previous week Blaby, Harborough and North West Leicestershire have increased, Hinckley & Bosworth and Oadby & Wigston have remained the same whilst Charnwood and Melton have decreased like nationally.



Source: PHE Power BI Line Lists

5. Weekly Cases by Middle Super Output Area (MSOA)



Source: PHE Coronavirus (COVID-19) in the UK Dashboard

If you require information contained in this leaflet in another version e.g. large print, Braille, tape or alternative language please telephone: 0116 305 6803, Fax: 0116 305 7271 or Minicom: 0116 305 6160.

જો આપ આ માહિતી આપની ભાષામાં સમજવામાં થોડી મદદ ઇચ્છતાં હો તો 0116 305 6803 નંબર પર ફોન કરશો અને અમે આપને મદદ કરવા અવસ્થા કરીશું.

ਜੇਕਰ ਤੁਹਾਨੂੰ ਇਸ ਜਾਣਕਾਰੀ ਨੂੰ ਸਮਝਣ ਵਿਚ ਕੁਝ ਮਦਦ ਚਾਹੀਦੀ ਹੈ ਤਾਂ ਕਿਰਪਾ ਕਰਕੇ 0116 305 6803 ਨੰਬਰ ਤੇ ਫੋਨ ਕਰੋ ਅਤੇ ਅਸੀਂ ਤੁਹਾਡੀ ਮਦਦ ਲਈ ਕਿਸੇ ਦਾ ਪ੍ਰਬੰਧ ਕਰ ਦਵਾਂਗੇ।

এই তথ্য নিজের ভাষায় বুঝার জন্য আপনার যদি কোন সাহায্যের প্রয়োজন হয়, তবে 0116 305 6803 এই নম্বরে ফোন করলে আমরা উপযুক্ত ব্যক্তির ব্যবস্থা করবো।

اگر آپ کو یہ معلومات سمجھنے میں کچھ مدد درکار ہے تو براہ مہربانی اس نمبر پر کال کریں 0116 305 6803 اور ہم آپ کی مدد کے لئے کسی کا انتظام کر دیں گے۔

假如閣下需要幫助，用你的語言去明白這些資訊，請致電 0116 305 6803，我們會安排有關人員為你提供幫助。

Jeżeli potrzebujesz pomocy w zrozumieniu tej informacji w Twoim języku, zadzwoń pod numer 0116 305 6803, a my Ci pomożemy.

26 April 2021

Strategic Business Intelligence Team
Business Intelligence
Chief Executive's Department
Leicestershire County Council
County Hall, Glenfield
Leicester LE3 8RA

Tel 0116 305 6059
Email: Kajal.lad@leics.gov.uk

Produced by the Strategic Business Intelligence Team at Leicestershire County Council.

Whilst every effort has been made to ensure the accuracy of the information contained within this report, Leicestershire County Council cannot be held responsible for any errors or omission relating to the data contained within the report.