

COVID-19: Data Update for Leicestershire

Period 28 April 2021 to 4 May 2021

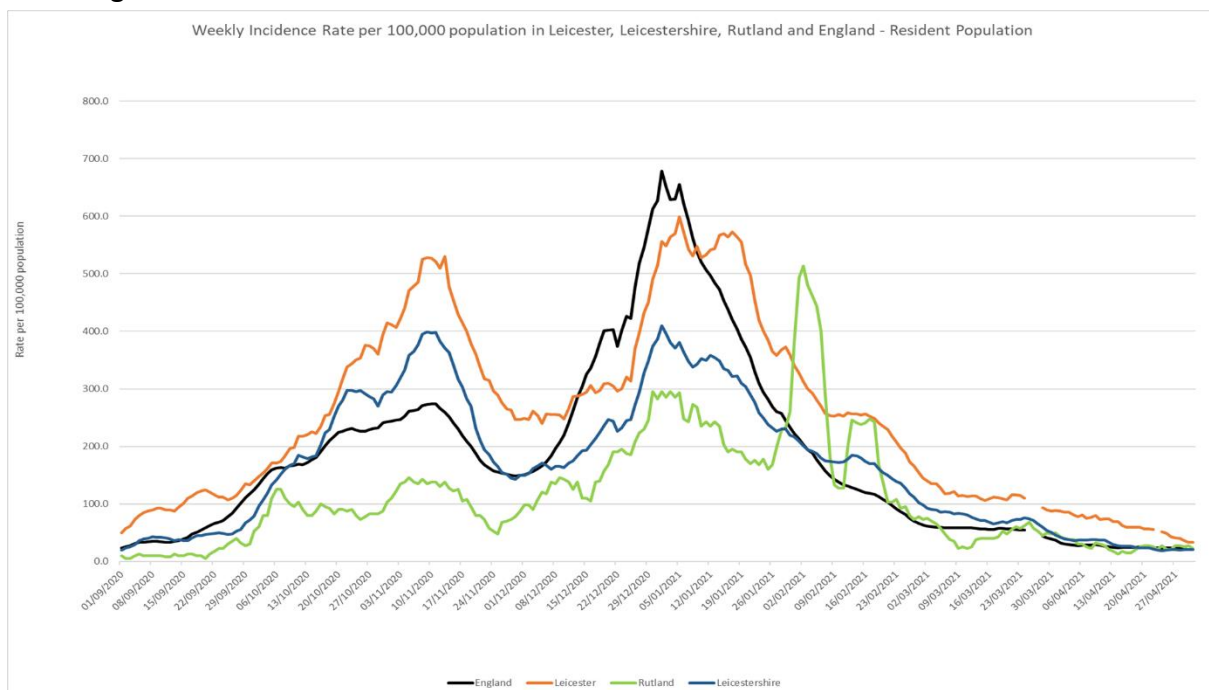
Headline Summary

1. Position Statement from the Director of Public Health for Leicestershire

Rates remain steady at around 20 cases per 100,000, in line with the national average, but we continue to see a level of cases and outbreaks that are preventing the rate falling further to the levels we saw in August last year. Between a third and a half of cases are occurring in the 10-30 age groups, with a particular outbreak situation in younger people in Harborough, it remains imperative that people take up the offer of vaccination as the NHS works down the age groups.

2. Trend in Weekly Incidence Rate (All ages) – Leicester, Leicestershire, Rutland and England

- The national rate has increased from 20.7 (period 27th Apr to 3rd May) to 21.4 per 100,000 population (period 28th Apr to 4th May). This latest rate reflects a percentage change decrease of 9% compared to the previous 7 day period for England.
- The Leicestershire rate has increased from 20.4 (period 27th Apr to 3rd May) to 20.8 per 100,000 population (period 28th Apr to 4th May). This latest rate reflects a percentage change increase of 13% compared to the previous 7 day period for Leicestershire. The rate in Leicestershire is lower than the national average.
- The rate for Leicester City stands at 33.3 per 100,000 population and is above the national average. The rate for Rutland stands at 22.5 per 100,000 population and is above the national average.

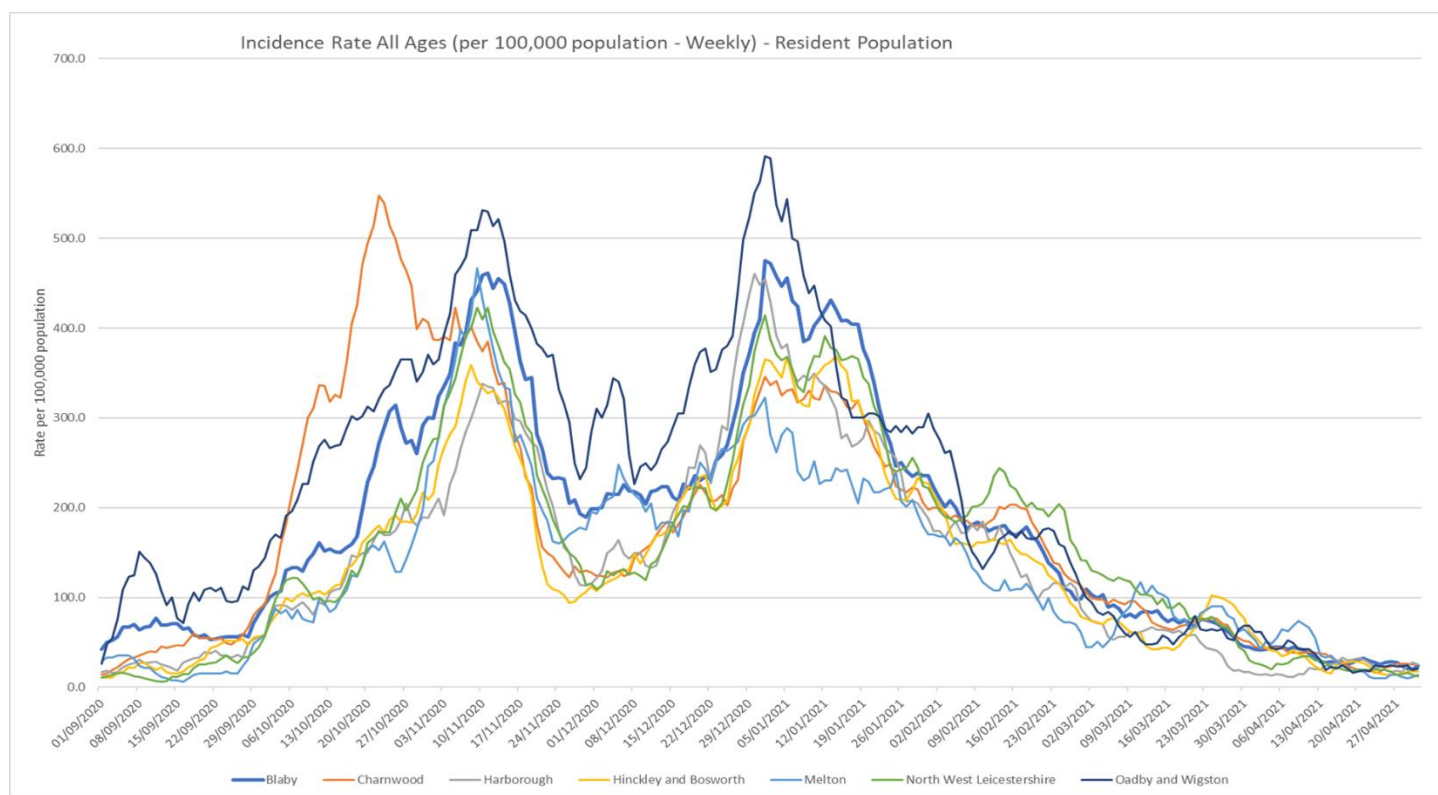


Source: PHE Power BI Line Lists

3. Trend in Weekly Incidence Rate (all ages) – Leicestershire Districts

- Harborough has the highest rate in the county (25.6 per 100,000, 24 cases), followed by Charnwood (25.3 per 100,000, 47 cases), Blaby (23.6 per 100,000, 24 cases), O&W (21.0 per 100,000, 12 cases), H&B (17.7 per 100,000, 20 cases), Melton (13.7 per 100,000 population, 7 cases) and NWL (12.5 per 100,000 population, 13 cases). Compared to the previous week, most districts (apart from Blaby, NWL and O&W) have increased unlike nationally.

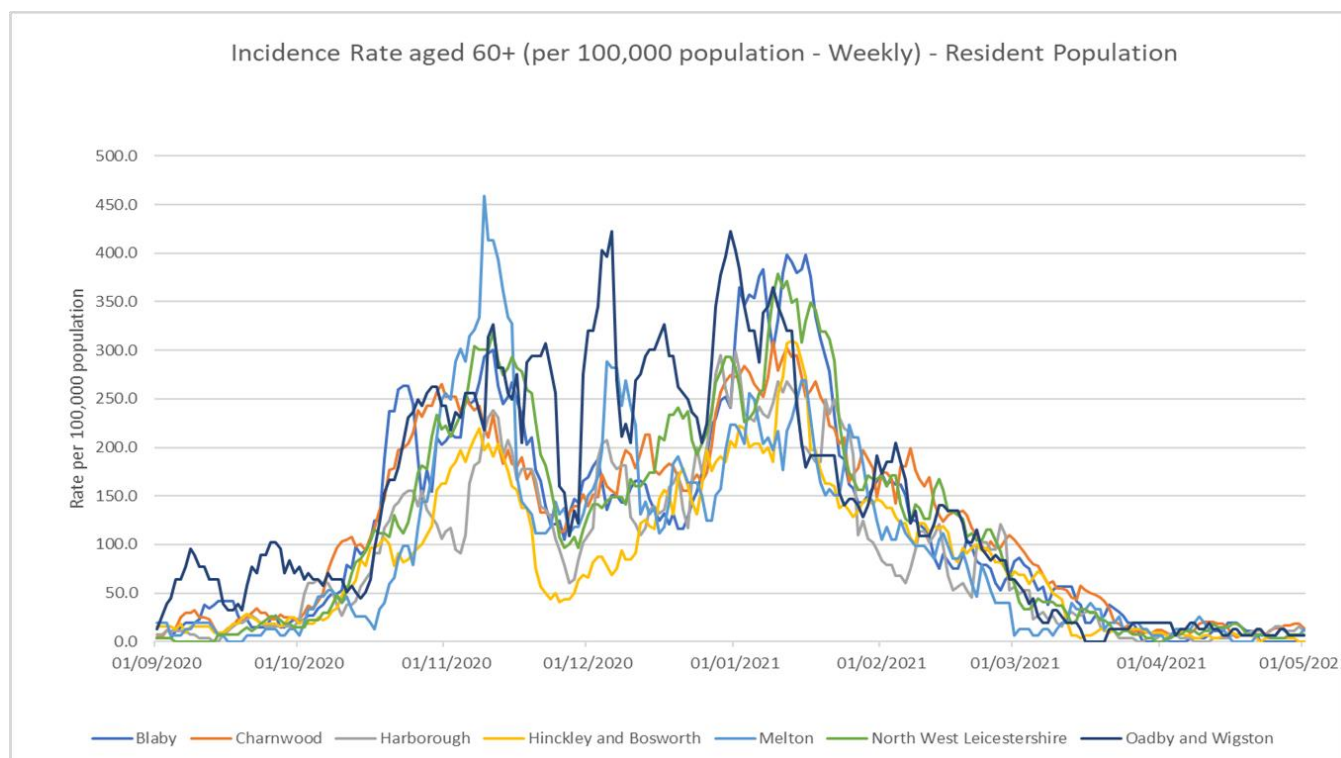
Indicator	Blaby	Charnwood	Harborough	Hinckley & Bosworth	Melton	NW Leicestershire	Oadby and Wigston	Leicestershire	England
Weekly incidence rate per 100,000 population (All Ages)	23.6	25.3	25.6	17.7	13.7	12.5	21.0	20.8	21.4
Weekly count of cases (All Ages)	24	47	24	20	7	13	12	147	12055
Percentage change in cases from previous 7 days (All Ages)	-8%	52%	33%	18%	40%	-35%	-8%	13%	-9%
Weekly incidence rate per 100,000 population (60+)	0.0	13.7	11.3	0.0	13.1	7.4	6.4	7.5	7.2
Weekly count of cases (60+)	0	6	3	0	2	2	1	14	1526
Percentage individuals testing positive (weekly)	1.2%	1.0%	0.8%	0.6%	0.2%	0.4%	0.8%		0.8%



Source: PHE Power BI Line Lists

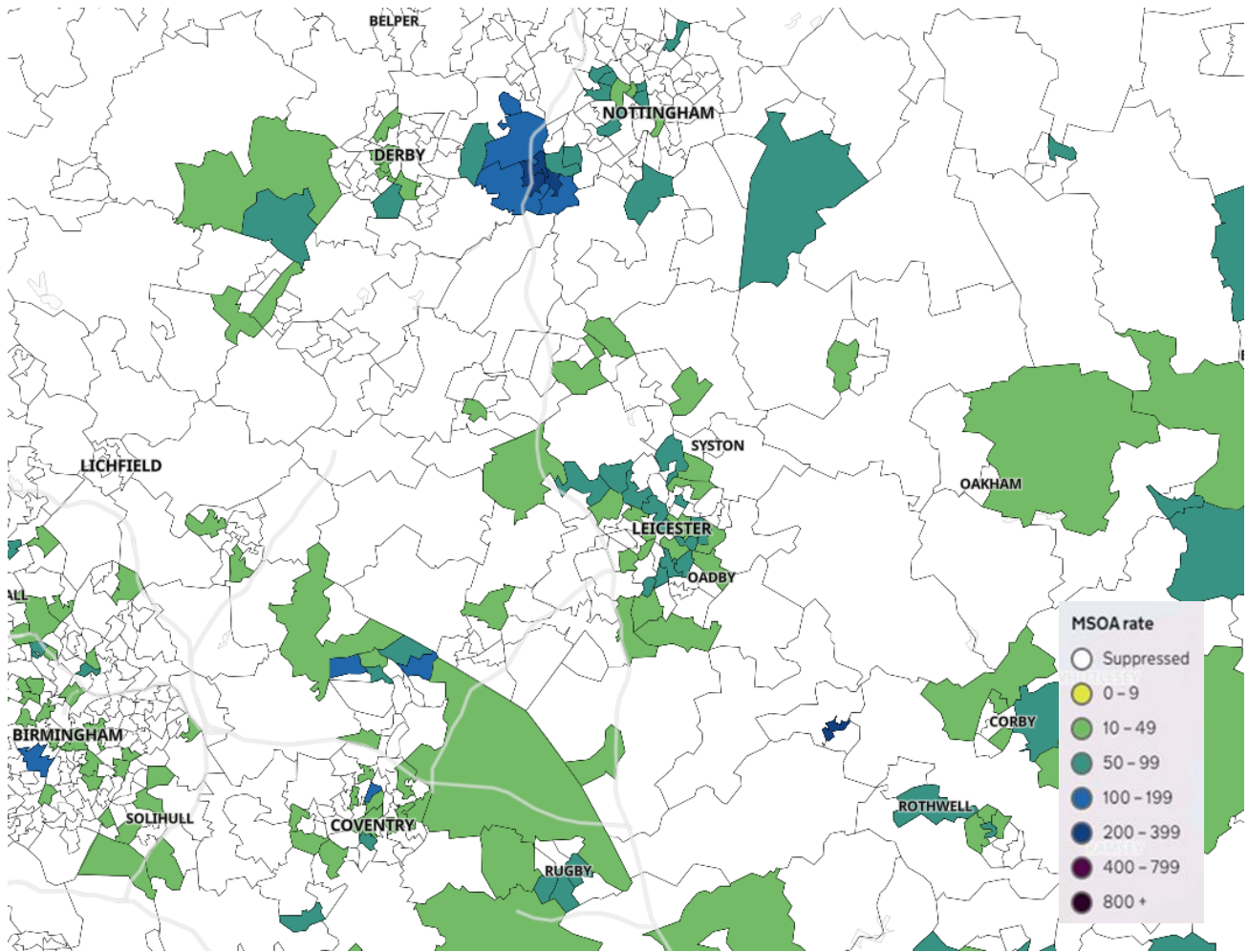
4. Trend in Weekly Incidence Rate (60+) – Leicestershire Districts

- The data for 60+ population show the rate for Leicestershire is 7.5 per 100,000 population, higher than the national rate of 7.2 per 100,000 population. Charnwood has the highest rate in the county (13.7 per 100,000 population, 6 cases) followed by Melton (13.1, 2 cases), Harborough (11.3, 3 cases), NWL (7.4, 2 cases), O&W (6.4, 1 case), H&B (0.0, 0 cases) and Blaby (0.0, 0 cases). Compared to the previous week, Charnwood, Melton and NWL have increased, Blaby, Harborough and O&W have stayed the same, whilst H&B has decreased.



Source: PHE Power BI Line Lists

5. Weekly Cases by Middle Super Output Area (MSOA)



Source: PHE Coronavirus (COVID-19) in the UK Dashboard

If you require information contained in this leaflet in another version e.g. large print, Braille, tape or alternative language please telephone: 0116 305 6803, Fax: 0116 305 7271 or Minicom: 0116 305 6160.

ਜੇ ਆਪ ਆ ਮਾਭਿੰਨੀ ਆਪਨੀ ਆਖਾਮਾਂ ਸਮਝਵਾਮਾਂ ਥੋੜੀ ਮਦਦ
ਓਝੜਨਾਂ ਭੇ ਤੇ 0116 305 6803 ਨੰਬਰ ਪਰ ਫ਼ੋਨ ਕਰਓ ਅਤੇ
ਅਸੇ ਆਪਨੇ ਮਦਦ ਕਰਵਾ ਅਵਸਥਾ ਕਰੀਓ.

ਜੇਕਰ ਤੁਹਾਨੂੰ ਇਸ ਜਾਣਕਾਰੀ ਨੂੰ ਸਮਝਣ ਵਿਚ ਕੁਝ ਮਦਦ ਚਾਹੀਦੀ
ਹੈ ਤਾਂ ਕਿਰਪਾ ਕਰਕੇ 0116 305 6803 ਨੰਬਰ ਤੇ ਫ਼ੋਨ ਕਰੋ ਅਤੇ
ਅਸੀਂ ਤੁਹਾਡੀ ਮਦਦ ਲਈ ਕਿਸੇ ਦਾ ਪ੍ਰਬੰਧ ਕਰ ਦਵਾਂਗੇ।

এই তথ্য নিজের ভাষায় বুঝার জন্য আপনার যদি কোন
সাহায্যের প্রয়োজন হয়, তবে 0116 305 6803 এই নম্বরে
ফোন করলে আমরা উপযুক্ত ব্যক্তির ব্যবস্থা করবো।

اگر آپ کو یہ معلومات سمجھنے میں کچھ مدد درکار ہے تو براہ مہربانی اس نمبر پر کال کریں
0116 305 6803 اور ہم آپ کی مدد کے لئے کسی کا انتظام کر دیں گے۔

假如閣下需要幫助，用你的語言去明白這些資訊，
請致電 0116 305 6803，我們會安排有關人員為你
提供幫助。

Jeżeli potrzebujesz pomocy w zrozumieniu tej informacji
w Twoim języku, zadzwoń pod numer 0116 305 6803,
a my Ci pomożemy.

10 May 2021

Strategic Business Intelligence Team
Business Intelligence
Chief Executive's Department
Leicestershire County Council
County Hall, Glenfield
Leicester LE3 8RA

Tel: 0116 305 6059
Email: Kajal.lad@leics.gov.uk

Produced by the Strategic Business Intelligence Team at Leicestershire County Council.

Whilst every effort has been made to ensure the accuracy of the information contained within this report, Leicestershire County Council cannot be held responsible for any errors or omission relating to the data contained within the report.