

COVID-19: Data Update for Leicestershire

Period 5 May 2021 to 11 May 2021

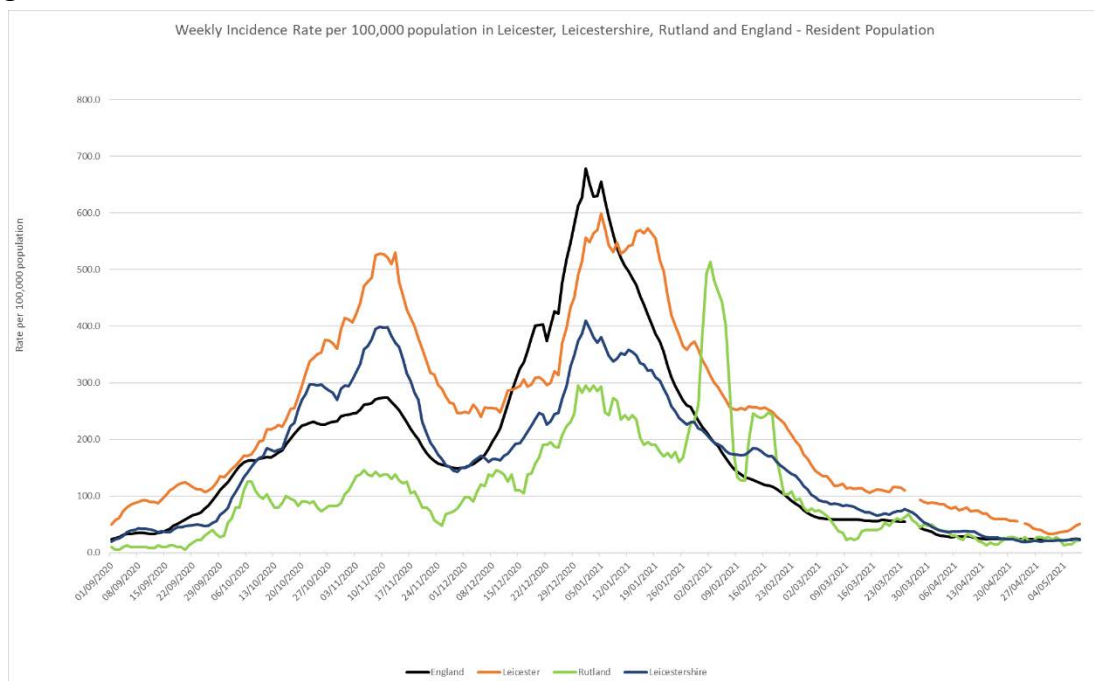
Headline Summary

1. Position Statement from the Director of Public Health for Leicestershire

Rates overall remain low, but Melton and Harborough have seen spikes in their rates due to outbreaks in the late teenage cohort. These have not been related to the April 02 (aka Indian) variant. The April 02 variant is a concern and it is likely that this will be a variant we will see increasingly in Leicestershire.

2. Trend in Weekly Incidence Rate (All ages) – Leicester, Leicestershire, Rutland and England

- The national rate has decreased from 24.3 (period 4th May to 10th May) to 23.6 per 100,000 population (period 5th May to 11th May). This latest rate reflects a percentage change increase of 10% compared to the previous 7 day period for England.
- The Leicestershire rate has decreased from 23.9 (period 4th May to 10th May) to 22.8 per 100,000 population (period 5th May to 11th May). This latest rate reflects a percentage change increase of 10% compared to the previous 7 day period for Leicestershire. The rate in Leicestershire is lower than the national average.
- The rate for Leicester City stands at 50.3 per 100,000 population and is above the national average. The rate for Rutland stands at 22.5 per 100,000 population and is below the national average.

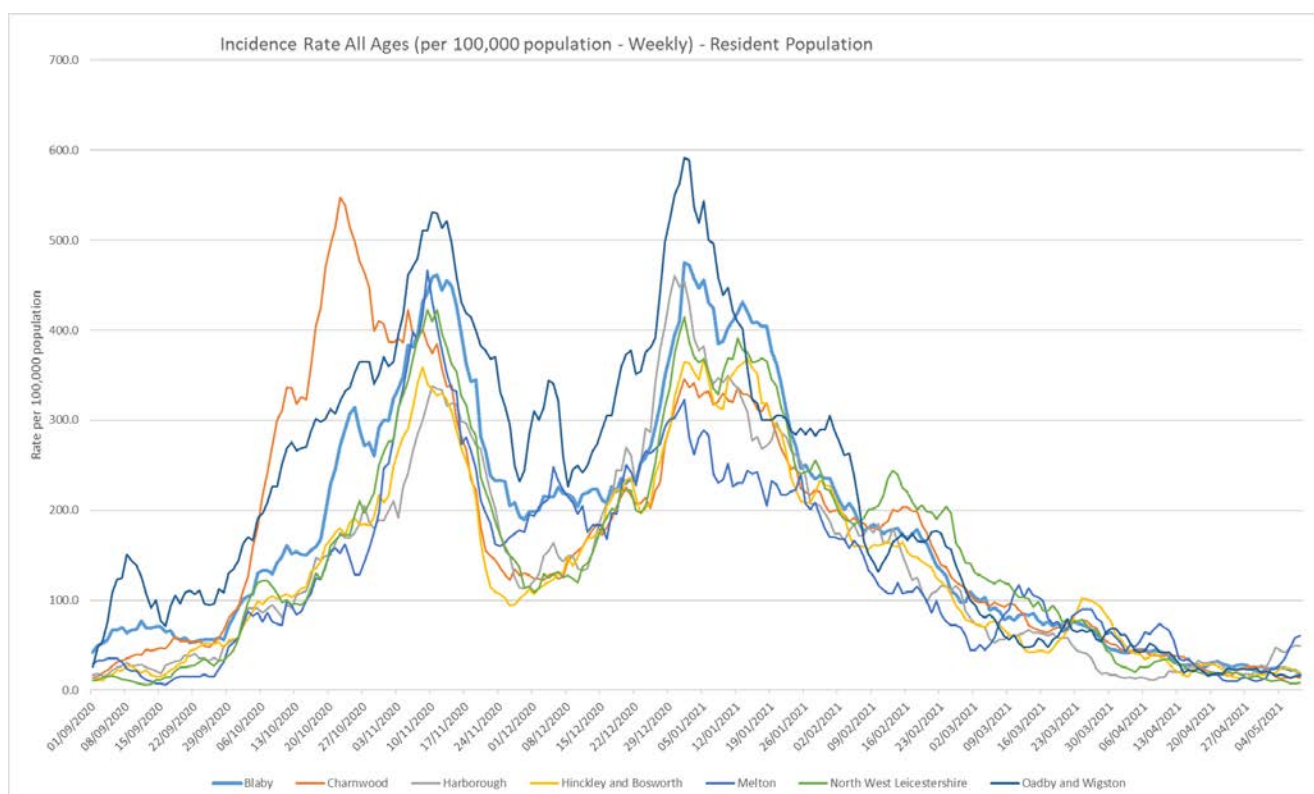


Source: PHE Power BI Line Lists

3. Trend in Weekly Incidence Rate (all ages) – Leicestershire Districts

- Melton has the highest rate in the county (60.5 per 100,000, 31 cases), followed by Harborough (49.0 per 100,000, 46 cases), H&B (20.3 per 100,000, 23 cases), Blaby (17.7 per 100,000, 18 cases), O&W (15.8 per 100,000, 9 cases), Charnwood (13.5 per 100,000 population, 25 cases) and NWL (8.7 per 100,000 population, 9 cases) Compared to the previous week, most districts (apart from Harborough, H&B and Melton) have decreased unlike nationally.

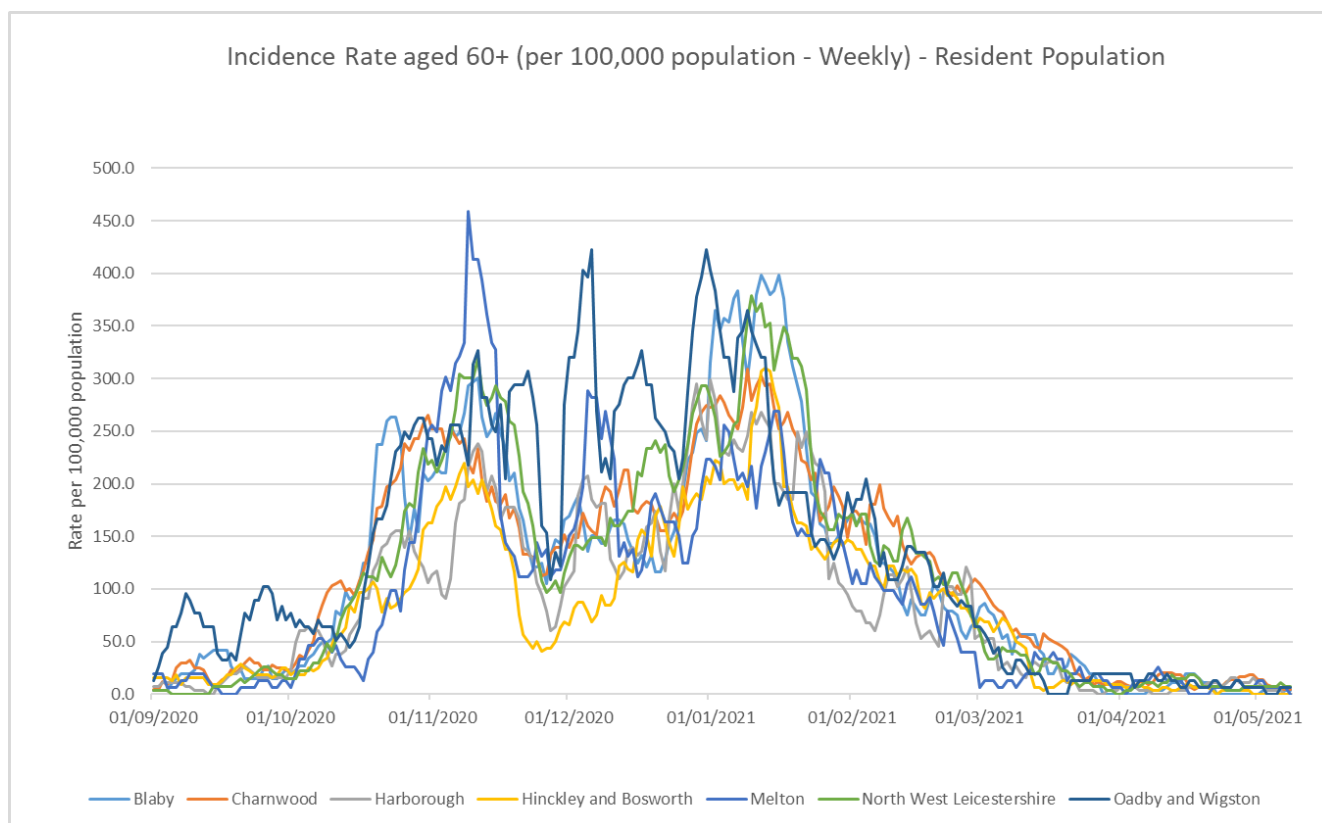
Indicator	Blaby	Charnwood	Harborough	Hinckley & Bosworth	Melton	NW Leicestershire	Oadby and Wigston	Leicestershire	England
Weekly incidence rate per 100,000 population (All Ages)	17.7	13.5	49.0	20.3	60.5	8.7	15.8	22.8	23.6
Weekly count of cases (All Ages)	18	25	46	23	31	9	9	161	13292
Percentage change in cases from previous 7 days (All Ages)	-25%	-47%	92%	15%	343%	-31%	-25%	10%	10%
Weekly incidence rate per 100,000 population (60+)	3.8	4.6	0.0	0.0	0.0	7.4	6.4	3.2	6.9
Weekly count of cases (60+)	1	2	0	0	0	2	1	6	1526
Percentage individuals testing positive (weekly)	0.8%	0.4%	2.1	0.7%	2.7%	0.3%	0.6%		0.8%



Source: PHE Power BI Line Lists

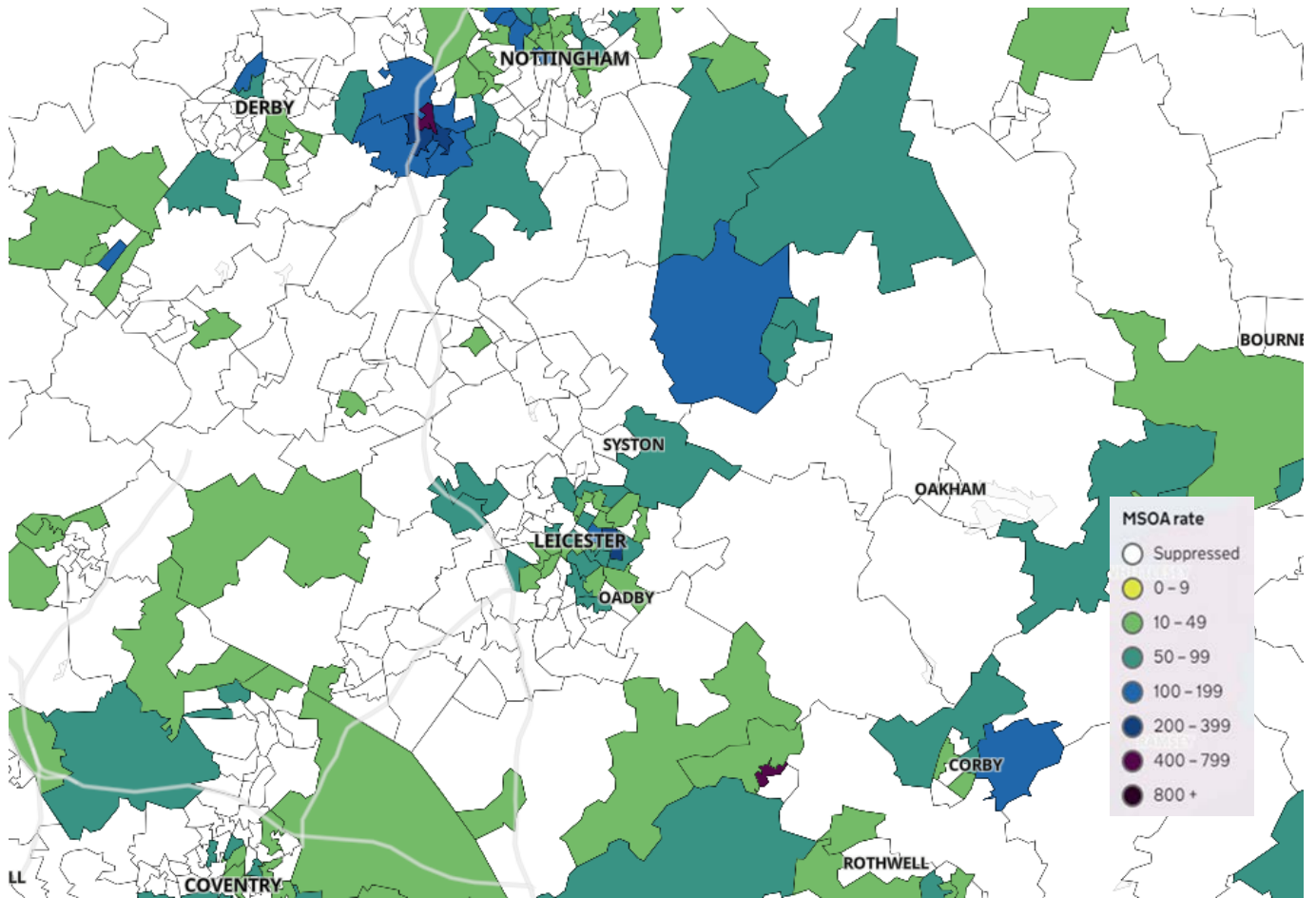
4. Trend in Weekly Incidence Rate (60+) – Leicestershire Districts

- The data for 60+ population show the rate for Leicestershire is 3.2 per 100,000 population, lower than the national rate of 6.9 per 100,000 population. NWL has the highest rate in the county (7.4 per 100,000 population, 2 cases) followed by O&W (6.4, 1 case), Charnwood (4.6, 2 cases), Blaby (3.8, 1 case), Harborough (0.0, 0 cases), H&B (0.0, 0 cases) and Melton (0.0, 0 cases). Compared to the previous week, Blaby has increased, H&B, NWL and O&W have stayed the same, whilst Charnwood, Harborough and Melton have decreased.



Source: PHE Power BI Line Lists

5. Weekly Cases by Middle Super Output Area (MSOA)



Source: PHE Coronavirus (COVID-19) in the UK Dashboard

If you require information contained in this leaflet in another version e.g. large print, Braille, tape or alternative language please telephone: 0116 305 6803, Fax: 0116 305 7271 or Minicom: 0116 305 6160.

ਜੇ ਆਪ ਆ ਸਾਹਿਤੀ ਆਪਨੀ ਆਖਾਮਾਂ ਸਮਝਵਾਮਾਂ ਥੀਓ ਮਦਦ
ਓਸ਼ਠਾਂ ਡੋ ਟੋ 0116 305 6803 ਨੰਬਰ ਪਰ ਫ਼ੋਨ ਕਰਓ ਅਤੇ
ਅਸੇ ਆਪਨੇ ਮਦਦ ਕਰਵਾ ਆਵਸਥਾ ਕਰੀਓ.

ਜੇਕਰ ਤੁਹਾਨੂੰ ਇਸ ਜਾਣਕਾਰੀ ਨੂੰ ਸਮਝਣ ਵਿਚ ਕੁਝ ਮਦਦ ਚਾਹੀਦੀ
ਹੈ ਤਾਂ ਕਿਰਪਾ ਕਰਕੇ 0116 305 6803 ਨੰਬਰ ਤੇ ਫ਼ੋਨ ਕਰੋ ਅਤੇ
ਅਸੀਂ ਤੁਹਾਡੀ ਮਦਦ ਲਈ ਕਿਸੇ ਦਾ ਪ੍ਰਬੰਧ ਕਰ ਦਵਾਂਗੇ।

এই তথ্য নিজের ভাষায় বুঝার জন্য আপনার যদি কোন
সাহায্যের প্রয়োজন হয়, তবে 0116 305 6803 এই নম্বরে
ফোন করলে আমরা উপযুক্ত ব্যক্তির ব্যবস্থা করবো।

اگر آپ کو یہ معلومات سمجھنے میں کچھ مدد درکار ہے تو براہ مہربانی اس نمبر پر کال کریں
0116 305 6803 اور ہم آپ کی مدد کے لئے کسی کا انتظام کر دیں گے۔

假如閣下需要幫助，用你的語言去明白這些資訊，
請致電 0116 305 6803，我們會安排有關人員為你
提供幫助。

Jeżeli potrzebujesz pomocy w zrozumieniu tej informacji
w Twoim języku, zadzwoń pod numer 0116 305 6803,
a my Ci pomożemy.

17 May 2021

Strategic Business Intelligence Team
Business Intelligence
Chief Executive's Department
Leicestershire County Council
County Hall, Glenfield
Leicester LE3 8RA

Tel: 0116 305 6059
Email: Kajal.lad@leics.gov.uk

Produced by the Strategic Business Intelligence Team at Leicestershire County Council.

Whilst every effort has been made to ensure the accuracy of the information contained within this report, Leicestershire County Council cannot be held responsible for any errors or omission relating to the data contained within the report.