

COVID-19: Data Update for Leicestershire

Period 16 June 2021 to 22 June 2021

Headline Summary

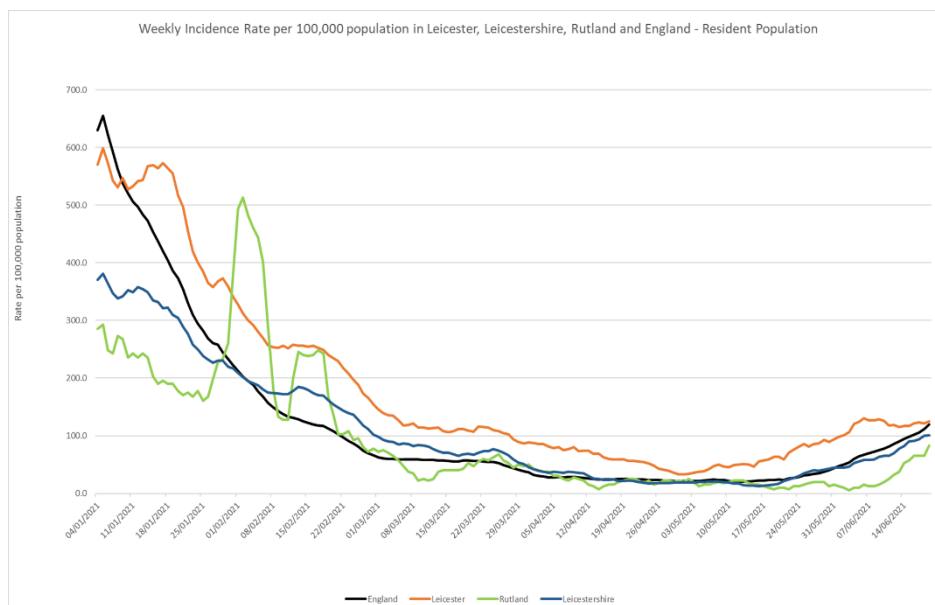
1. Position Statement from the Director of Public Health for Leicestershire

Rates continue to increase at pace across Leicestershire. Although we have seen a ‘topping out’ of rates in Harborough and a small decline in Hinckley and Bosworth, rates have increased by over 70% in a week in all of Blaby, Oadby and Wigston, North West Leicestershire and Melton.

No one sector or area is signalling as a particular concern, this appears to be widespread community spread again. The team continues to test, communicate and manage such outbreaks as are known to us.

2. Trend in Weekly Incidence Rate (All ages) – Leicester, Leicestershire, Rutland and England

- The national rate has increased from 111.8 (period 15th June to 21st June) to 119.5 per 100,000 population (period 16th June to 22nd June). This latest rate reflects a percentage change increase of 40% compared to the previous 7 day period for England.
- The Leicestershire rate has increased from 99.7 (period 15th June to 21st June) to 101.3 per 100,000 population (period 16th June to 22nd June). This latest rate reflects a percentage change increase of 45% compared to the previous 7 day period for Leicestershire. The rate in Leicestershire is lower than the national average.
- The rate for Leicester City stands at 125.1 per 100,000 population and is above the national average. The rate for Rutland stands at 82.7 per 100,000 population and is below the national average.

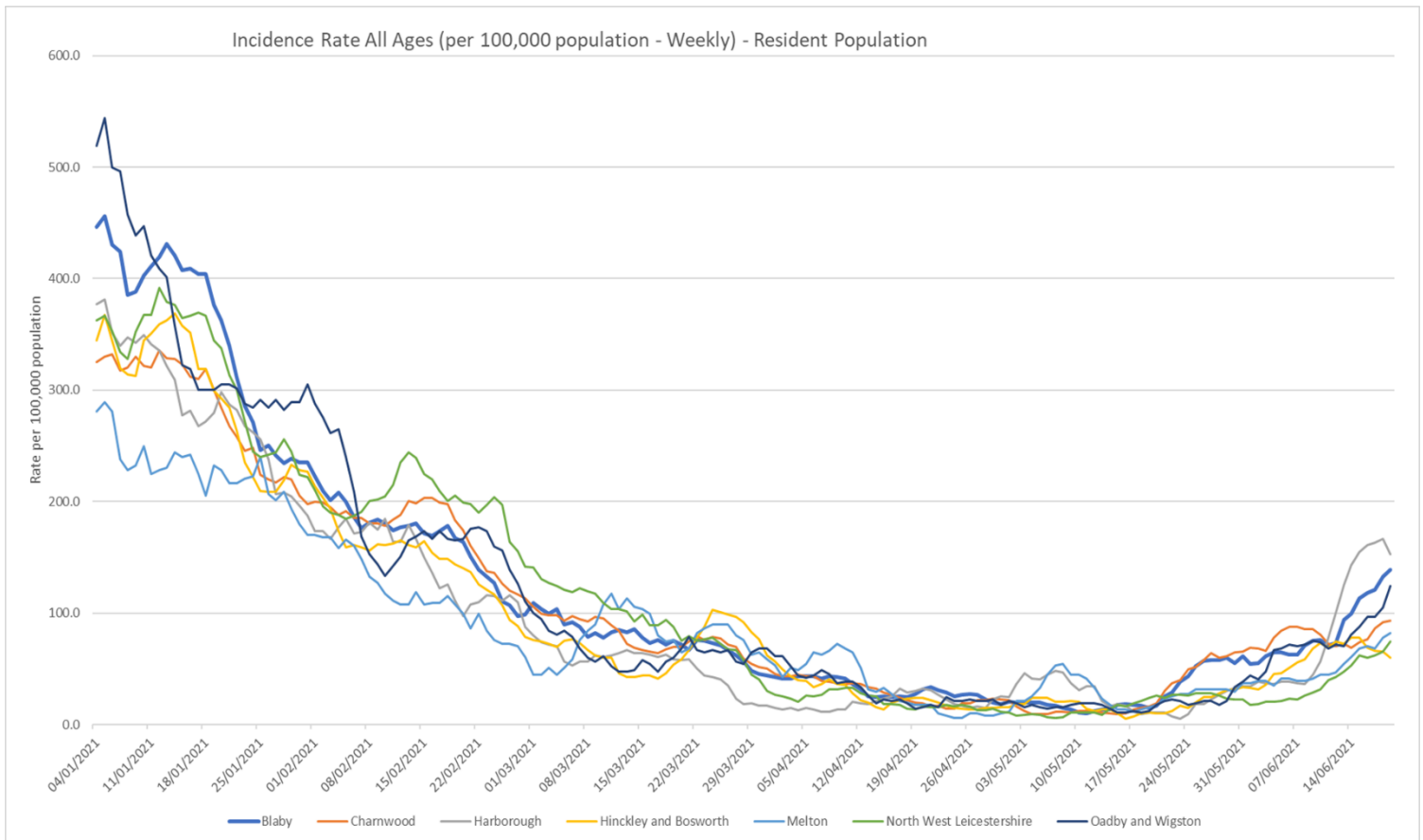


Source: PHE Power BI Line Lists

3. Trend in Weekly Incidence Rate (all ages) – Leicestershire Districts

- Harborough has the highest rate in the county (152.4 per 100,000, 143 cases), followed by Blaby (138.9 per 100,000, 141 cases), O&W (124.5 per 100,000, 71 cases), Charnwood (93.1 per 100,000, 173 cases), Melton (82.0 per 100,000 population, 42 cases), NWL (74.3 per 100,000 population, 77 cases) and H&B (60.1 per 100,000, 68 cases). Compared to the previous week, most districts (apart from H&B) have increased like nationally.

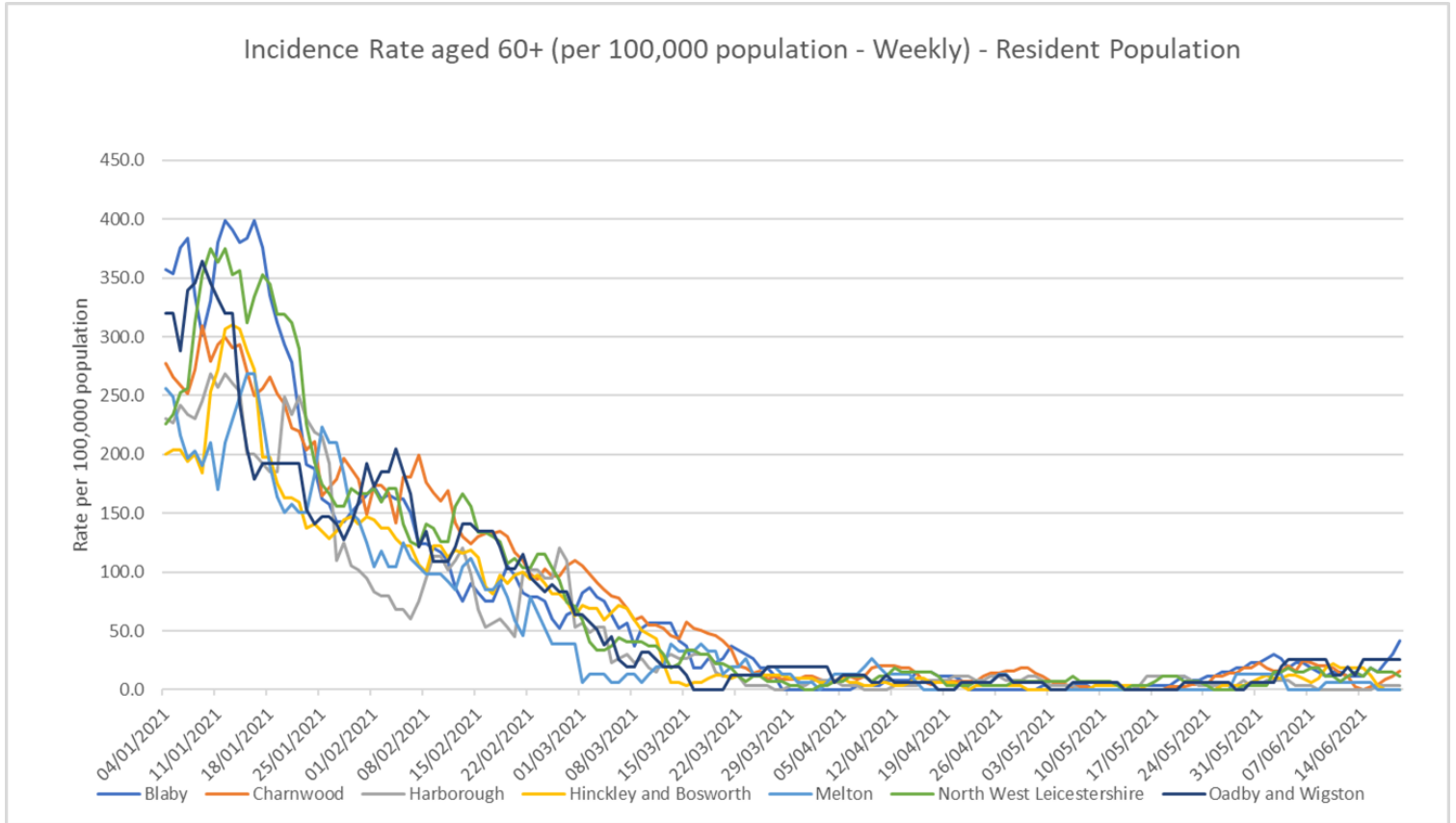
Indicator	Blaby	Charnwood	Harborough	Hinckley & Bosworth	Melton	NW Leicestershire	Oadby and Wigston	Leicestershire	England
Weekly incidence rate per 100,000 population (All Ages)	138.9	93.1	152.4	60.1	82.0	74.3	124.5	101.3	119.5
Weekly count of cases (All Ages)	141	173	143	68	42	77	71	715	67252
Percentage change in cases from previous 7 days (All Ages)	91%	32%	52%	-19%	75%	75%	73%	45%	40%
Weekly incidence rate per 100,000 population (60+)	41.4	16.0	3.8	0.0	0.0	11.1	25.6	13.9	19.3
Weekly count of cases (60+)	11	7	1	0	0	3	4	26	1526
Percentage individuals testing positive (weekly)	6.0%	3.7%	6.4%	2.6%	3.1%	2.9%	3.5%		3.4%



Source: PHE Power BI Line Lists

4. Trend in Weekly Incidence Rate (60+) – Leicestershire Districts

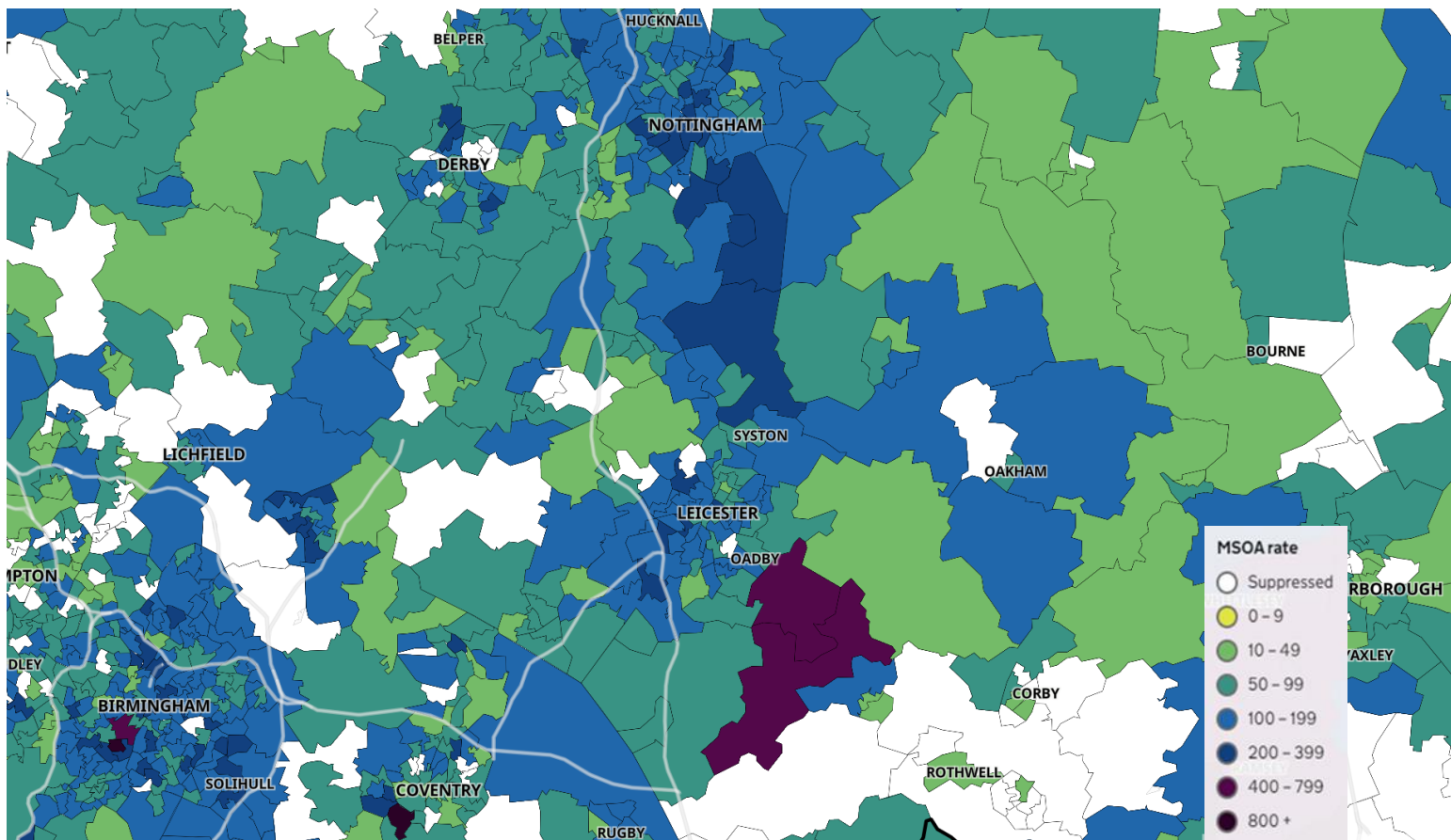
- The data for 60+ population show the rate for Leicestershire is 13.9 per 100,000 population, lower than the national rate of 19.3 per 100,000 population. Blaby has the highest rate in the county (41.4 per 100,000 population, 11 cases) followed by O&W (25.6, 4 cases), Charnwood (16.0, 7 cases), NWL (11.1, 3 cases), Harborough (3.8, 1 case), Melton (0.0, 0 cases) and H&B (0.0, 0 cases). Compared to the previous week, most districts (apart from H&B, Melton and NWL) have increased like nationally.



Source: PHE Power BI Line Lists

5. Weekly Cases by Middle Super Output Area (MSOA)

Source: PHE Coronavirus (COVID-19) in the UK Dashboard



If you require information contained in this leaflet in another version e.g. large print, Braille, tape or alternative language please telephone: 0116 305 6803, Fax: 0116 305 7271 or Minicom: 0116 305 6160.

જો આપ આ માહિતી આપની ભાષામાં સમજવામાં થોડી મદદ ઇચ્છતાં હો તો 0116 305 6803 નંબર પર ફોન કરશો અને અમે આપને મદદ કરવા અવસ્થા કરીશું.

ਜੇਕਰ ਤੁਹਾਨੂੰ ਇਸ ਜਾਣਕਾਰੀ ਨੂੰ ਸਮਝਣ ਵਿਚ ਕੁਝ ਮਦਦ ਚਾਹੀਦੀ ਹੈ ਤਾਂ ਕਿਰਪਾ ਕਰਕੇ 0116 305 6803 ਨੰਬਰ ਤੇ ਫੋਨ ਕਰੋ ਅਤੇ ਅਸੀਂ ਤੁਹਾਡੀ ਮਦਦ ਲਈ ਕਿਸੇ ਦਾ ਪ੍ਰਬੰਧ ਕਰ ਦਵਾਂਗੇ।

এই তথ্য নিজের ভাষায় বুঝার জন্য আপনার যদি কোন সাহায্যের প্রয়োজন হয়, তবে 0116 305 6803 এই নম্বরে ফোন করলে আমরা উপযুক্ত ব্যক্তির ব্যবস্থা করবো।

اگر آپ کو یہ معلومات سمجھنے میں کچھ مدد درکار ہے تو براہ مہربانی اس نمبر پر کال کریں 0116 305 6803 اور ہم آپ کی مدد کے لئے کسی کا انتظام کر دیں گے۔

假如閣下需要幫助，用你的語言去明白這些資訊，請致電 0116 305 6803，我們會安排有關人員為你提供幫助。

Jeżeli potrzebujesz pomocy w zrozumieniu tej informacji w Twoim języku, zadzwoń pod numer 0116 305 6803, a my Ci dopomozemy.

28 June 2021

Strategic Business Intelligence Team
Business Intelligence
Chief Executive's Department
Leicestershire County Council
County Hall, Glenfield
Leicester LE3 8RA

Tel: 0116 305 6059
Email: Kajal.lad@leics.gov.uk

Produced by the Strategic Business Intelligence Team at Leicestershire County Council.

Whilst every effort has been made to ensure the accuracy of the information contained within this report, Leicestershire County Council cannot be held responsible for any errors or omission relating to the data contained within the report.