

# COVID-19: Data Update for Leicestershire

Period 26 May 2021 to 1 June 2021

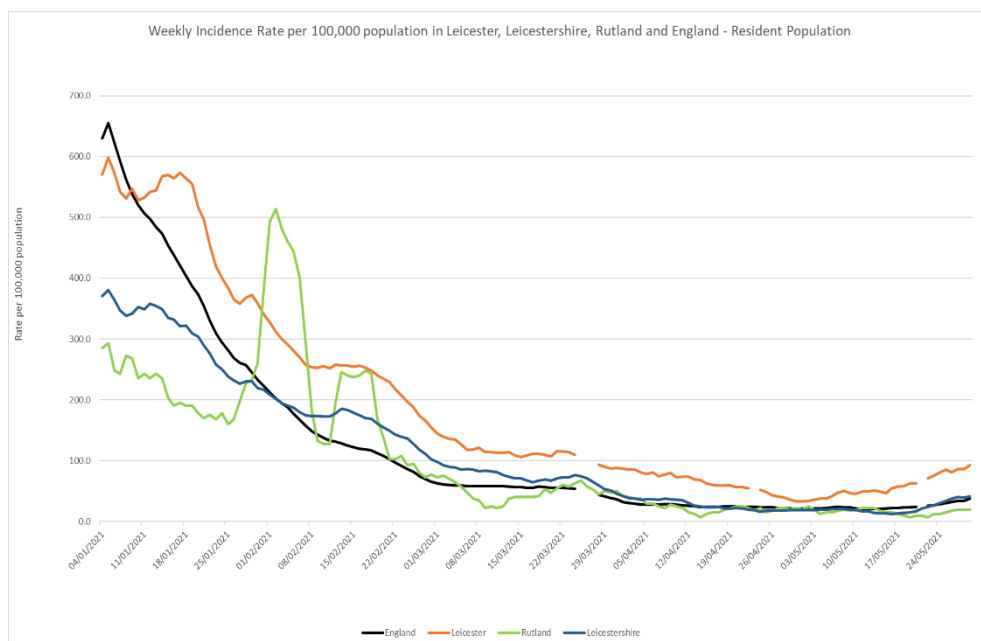
## Headline Summary

### 1. Position Statement from the Director of Public Health for Leicestershire

There's been a steep increase in numbers across Leicestershire with covid cases overall rising by 150% in the last seven days - Charnwood and Blaby being of most concern. There would appear to be two main factors behind this – a generalised increase across the county as mixing has increased, and at a time when the Delta variant was beginning to 'take over' and specific issues related to school age parties and gatherings.

### 2. Trend in Weekly Incidence Rate (All ages) – Leicester, Leicestershire, Rutland and England

- The national rate has increased from 34.5 (period 25<sup>th</sup> May to 31<sup>st</sup> May) to 37.4 per 100,000 population (period 26<sup>th</sup> May to 1<sup>st</sup> June). This latest rate reflects a percentage change increase of 46% compared to the previous 7 day period for England.
- The Leicestershire rate has increased from 39.5 (period 25<sup>th</sup> May to 31<sup>st</sup> May) to 41.2 per 100,000 population (period 26<sup>th</sup> May to 1<sup>st</sup> June). This latest rate reflects a percentage change increase of 68% compared to the previous 7 day period for Leicestershire. The rate in Leicestershire is higher than the national average.
- The rate for Leicester City stands at 92.6 per 100,000 population and is above the national average. The rate for Rutland stands at 20.0 per 100,000 population and is below the national average.

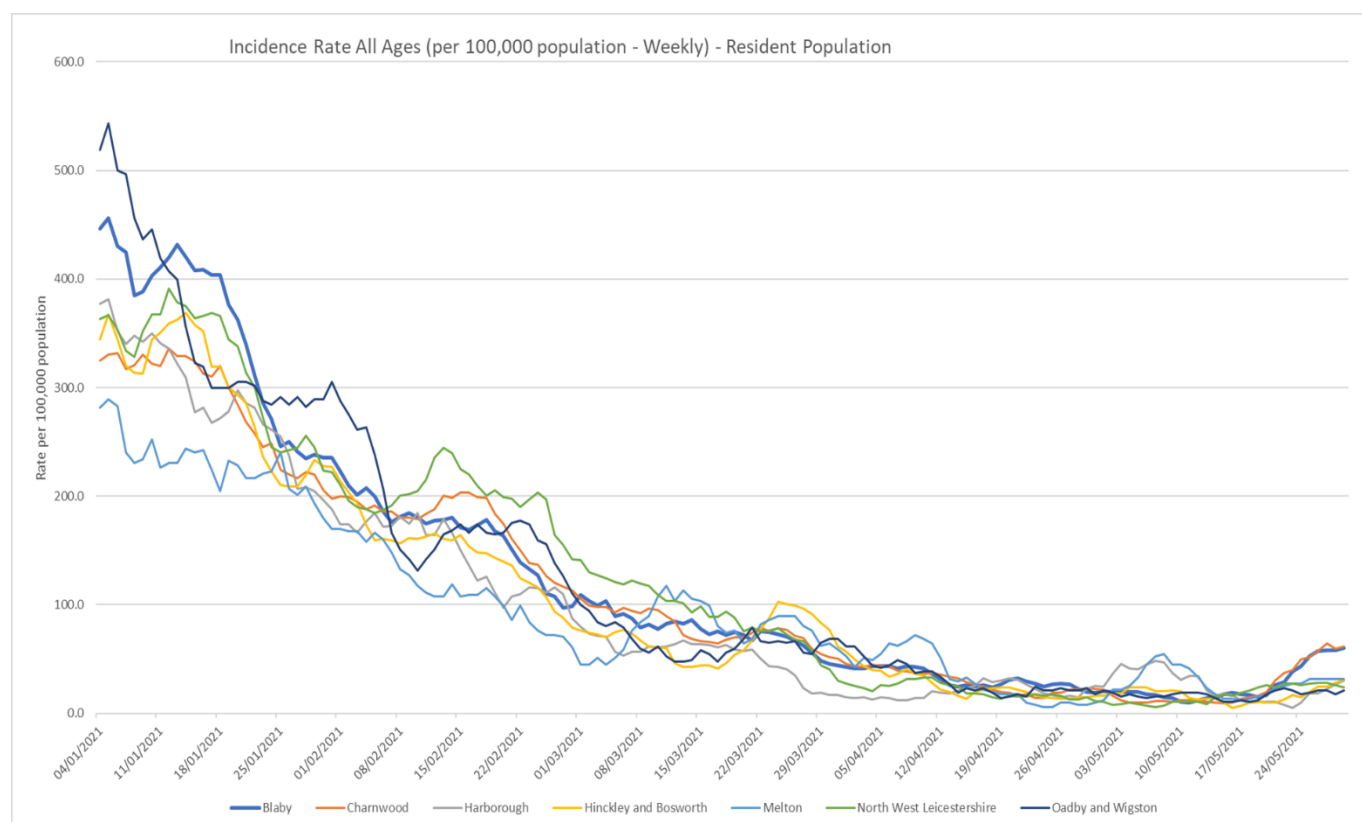


Source: PHE Power BI Line Lists

### 3. Trend in Weekly Incidence Rate (all ages) – Leicestershire Districts

- Charnwood has the highest rate in the county (61.3 per 100,000, 114 cases), followed by Blaby (60.1 per 100,000, 61 cases), Melton (31.2 per 100,000, 16 cases), H&B (30.9 per 100,000, 35 cases), Harbrough (29.8 per 100,000, 28 cases), NWL (24.1 per 100,000 population, 25 cases), and O&W (21.0 per 100,000 population, 12 cases). Compared to the previous week, most districts (apart from NWL and O&W) have increased like nationally.

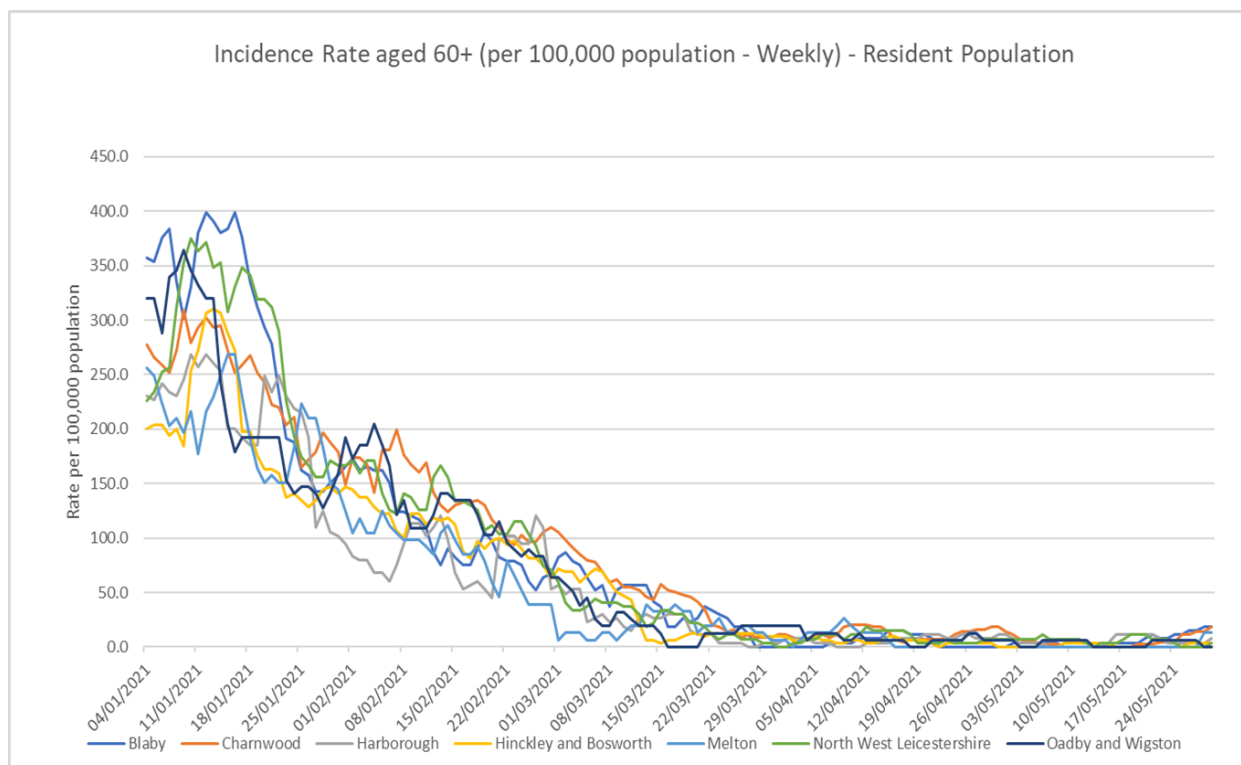
Indicator	Blaby	Charnwood	Harbrough	Hinckley & Bosworth	Melton	NW Leicestershire	Oadby and Wigston	Leicestershire	England
Weekly incidence rate per 100,000 population (All Ages)	60.1	61.3	29.8	30.9	31.2	24.1	21.0	41.2	37.4
Weekly count of cases (All Ages)	61	114	28	35	16	25	12	291	21026
Percentage change in cases from previous 7 days (All Ages)	110%	65%	300%	150%	23%	-11%	-8%	68%	46%
Weekly incidence rate per 100,000 population (60+)	18.8	18.3	7.6	3.1	13.1	3.7	0.0	10.2	8.6
Weekly count of cases (60+)	5	8	2	1	2	1	0	19	1526
Percentage individuals testing positive (weekly)	3.0%	3.1%	1.3%	1.4%	1.4%	1.3%	1.0%		1.3%



Source: PHE Power BI Line Lists

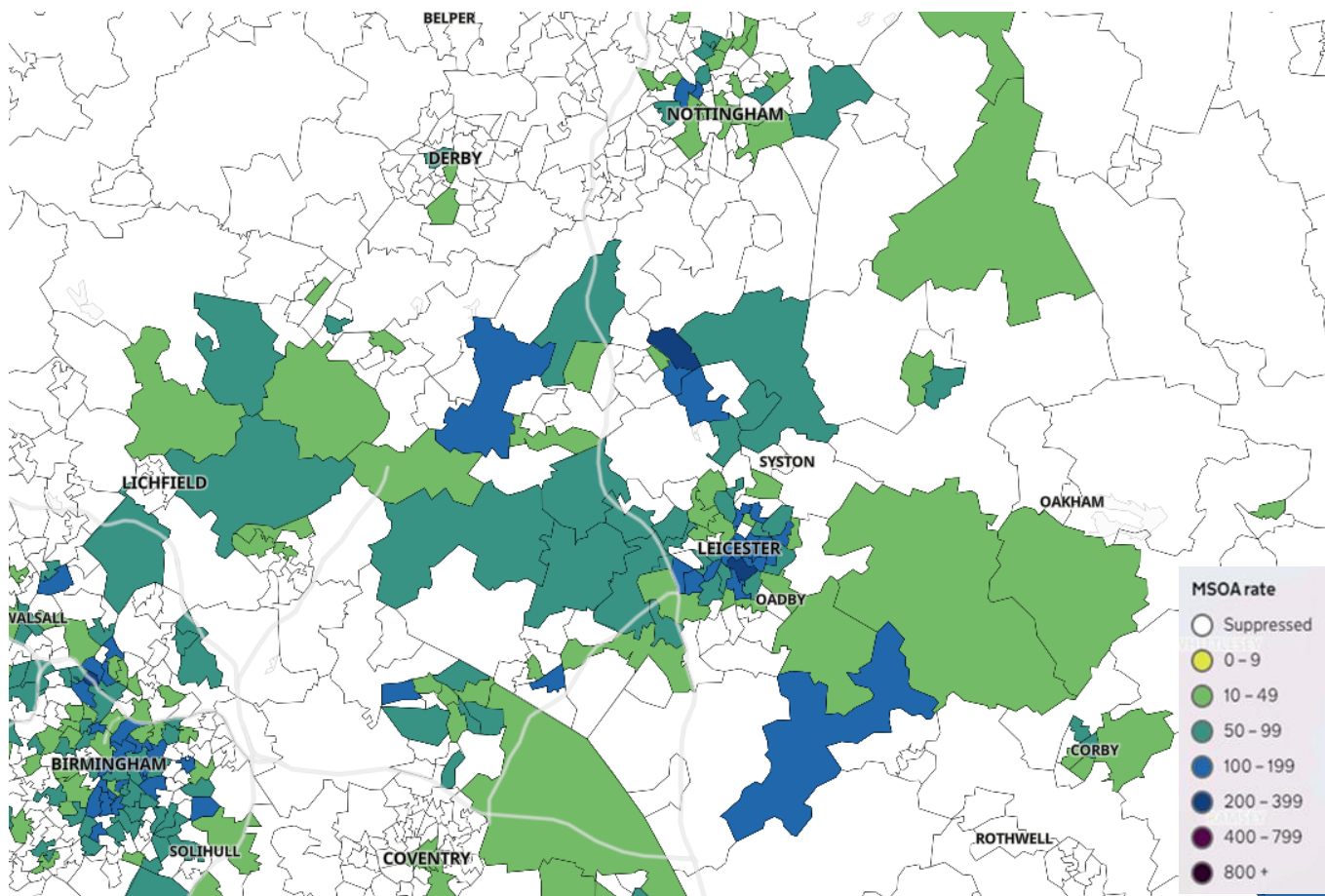
#### 4. Trend in Weekly Incidence Rate (60+) – Leicestershire Districts

- The data for 60+ population show the rate for Leicestershire is 10.2 per 100,000 population, higher than the national rate of 8.6 per 100,000 population. Blaby has the highest rate in the county (18.8 per 100,000 population, 5 cases) followed by Charnwood (18.3, 8 cases), Melton (13.1, 2 cases), Harbrough (7.6, 2 cases), NWL (3.7, 1 case), H&B (3.1, 1 case) and O&W (0.0, 0 cases). Compared to the previous week, most districts (apart from Harbrough, NWL and O&W) have increased like nationally.



Source: PHE Power BI Line Lists

## 5. Weekly Cases by Middle Super Output Area (MSOA)



Source: PHE Coronavirus (COVID-19) in the UK Dashboard

If you require information contained in this leaflet in another version e.g. large print, Braille, tape or alternative language please telephone: 0116 305 6803, Fax: 0116 305 7271 or Minicom: 0116 305 6160.

જો આપ આ માહિતી આપની ભાષામાં સમજવામાં થોડી મદદ ઇચ્છતાં હો તો 0116 305 6803 નંબર પર ફોન કરશો અને અમે આપને મદદ કરવા અવસ્થા કરીશું.

ਜੇਕਰ ਤੁਹਾਨੂੰ ਇਸ ਜਾਣਕਾਰੀ ਨੂੰ ਸਮਝਣ ਵਿੱਚ ਕੁਝ ਮਦਦ ਚਾਹੀਦੀ ਹੈ ਤਾਂ ਕਿਰਪਾ ਕਰਕੇ 0116 305 6803 ਨੰਬਰ ਤੇ ਫੋਨ ਕਰੋ ਅਤੇ ਅਸੀਂ ਤੁਹਾਡੀ ਮਦਦ ਲਈ ਕਿਸੇ ਦਾ ਪ੍ਰਬੰਧ ਕਰ ਦਵਾਂਗੇ।

এই তথ্য নিজের ভাষায় বুঝার জন্য আপনার যদি কোন সাহায্যের প্রয়োজন হয়, তবে 0116 305 6803 এই নম্বরে ফোন করলে আমরা উপযুক্ত ব্যক্তির ব্যবস্থা করবো।

اگر آپ کو یہ معلومات سمجھنے میں کچھ مدد درکار ہے تو براہ مہربانی اس نمبر پر کال کریں 0116 305 6803 اور ہم آپ کی مدد کے لئے کسی کا انتظام کر دیں گے۔

假如閣下需要幫助，用你的語言去明白這些資訊，請致電 0116 305 6803，我們會安排有關人員為你提供幫助。

Jeżeli potrzebujesz pomocy w zrozumieniu tej informacji w Twoim języku, zadzwoń pod numer 0116 305 6803, a my Ci pomożemy.

**7 June 2021**

Strategic Business Intelligence Team  
Business Intelligence  
Chief Executive's Department  
Leicestershire County Council  
County Hall, Glenfield  
Leicester LE3 8RA

Tel 0116 305 6059  
Email: [Kajal.lad@leics.gov.uk](mailto:Kajal.lad@leics.gov.uk)

Produced by the Strategic Business Intelligence Team at Leicestershire County Council.

Whilst every effort has been made to ensure the accuracy of the information contained within this report, Leicestershire County Council cannot be held responsible for any errors or omission relating to the data contained within the report.