

COVID-19:

Data Update for Leicestershire

Week 21 of 2021

8th June 2021

Strategic Business Intelligence Team
Business Intelligence
Chief Executive's Department
Leicestershire County Council
County Hall, Glenfield
Leicester LE3 8RA

Tel 0116 305 6059
Email: kajal.lad@leics.gov.uk

Produced by the Strategic Business Intelligence Team at Leicestershire County Council.

Whilst every effort has been made to ensure the accuracy of the information contained within this report, Leicestershire County Council cannot be held responsible for any errors or omission relating to the data contained within the report.

What have we learnt from the newly released Covid-19 data?

A series of publicly available dashboards examining Covid-19 cases, deaths involving Covid-19 and a district summary are available at the below links. A summary narrative to support the data in these dashboards then follows.

- [Deaths involving Covid-19](#)
- [Covid-19 Summary at District Level](#)
- [PHE Weekly Covid-19 Cases](#)

1. One death¹ involving Covid-19 was recorded in Leicestershire in the last week

- As of week 21 2021 (up to 28th May), there has been a total of 1,560 deaths in Leicestershire. The weekly counts of deaths has increased from no deaths in week 20 of 2021 to one death in week 21 of 2021.
- Of all deaths involving Covid-19 in Leicestershire, 1,041 (66.7%) were in hospital and 397 (25.4%) were in a care home.
- In week 21 in Leicestershire there was one death in an 'other setting'.

¹ Death counts are based on death occurrences. The death is counted as involving Covid-19 if Covid-19 was mentioned on the death certificate. Please note, Covid-19 may not have been confirmed by a test. Source: [Office for National Statistics](#) (2021)

Deaths (numbers) by local authority and place of death, for deaths that occurred up to 28th May but were registered up to 5th June.

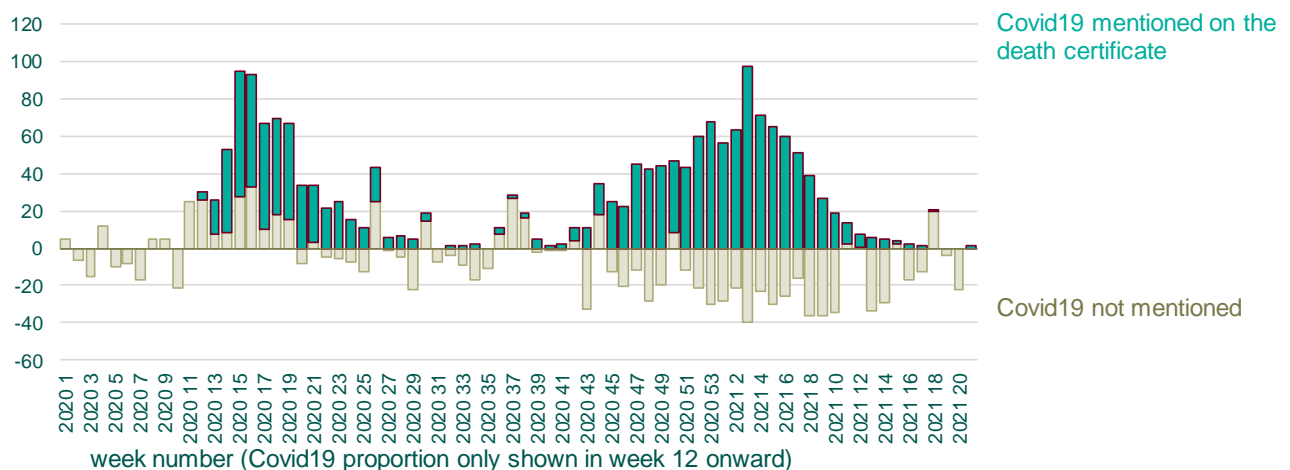
	Care Home		Elsewhere		Home		Hospice		Hospital		Total				Population
	Count	Rate	Count	Rate	Count	Rate	Count	Rate	Count	Rate	Count	Rate	LCI	UCI	
Blaby	47	46.8	6	6.0	13	12.9	1	1.0	166	165.3	233	232.0	203.2	263.8	100421
Charnwood	97	53.1	8	4.4	18	9.9	6	3.3	242	132.5	371	203.1	183.0	224.9	182643
Harborough	55	59.5	1	1.1	10	10.8	2	2.2	106	114.6	174	188.1	161.2	218.2	92499
H&B	61	54.3	0	0.0	12	10.7	5	4.4	161	143.2	239	212.6	186.5	241.3	112423
Melton	44	86.1	1	2.0	7	13.7	1	2.0	65	127.2	118	230.9	191.1	276.5	51100
NWLeics	48	47.0	2	2.0	15	14.7	6	5.9	173	169.4	244	238.9	209.9	270.9	102126
O&W	45	78.9	2	3.5	6	10.5	0	0.0	128	224.3	181	317.2	272.7	367.0	57056
Leicestershire	397	56.9	20	2.9	81	11.6	21	3.0	1041	149.1	1560	223.4	212.5	234.8	698268
Rutland	32	80.6	0	0.0	5	12.6	2	5.0	36	90.7	75	188.9	148.6	236.8	39697
Leicester City	143	40.3	25	7.0	70	19.7	2	0.6	633	178.2	873	245.8	229.7	262.6	355218
LLR	572	52.3	45	4.1	156	14.3	25	2.3	1710	156.4	2508	229.4	220.5	238.6	1093183

2. No excess deaths were recorded in the last week in Leicestershire

- Counts of excess deaths in Leicestershire have fluctuated over the last 10 weeks. The number of all deaths seen has increased from week 20 2021 to week 21 2021. The latest figures from ONS show that 100 deaths occurred in Leicestershire in week 21 of 2021. There were no excess deaths reported in the last week.
- The latest weeks data shows that there was one death that mentioned Covid-19 on the death certificate in week 21.

Weekly provisional figures on deaths occurring, minus the weekly average (2015 to 2019) plus death counts where coronavirus (COVID-19) was mentioned on the death certificate

Leicestershire



Covid-19 - Weekly occurrences

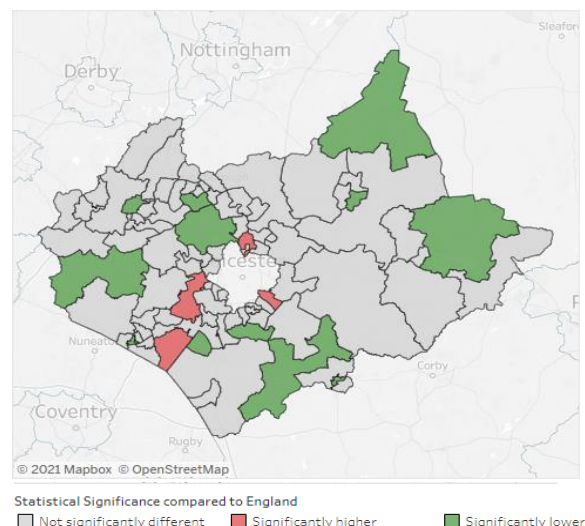
Based on a chart by David Spiegelhalter

<https://www.ons.gov.uk/peoplepopulationandcommunity/birthsdeathsandmarriages/deaths/datasets/weeklyprovisionalfiguresondeathsregisteredinenglandandwales>

3. Two areas in Blaby, one area in Charnwood and one area in Oadby and Wigston has a significantly higher percentage of deaths involving Covid-19 than the national percentage

- The map below examines the statistical significance compared to England, of the percentage of deaths involving Covid-19 by Middle Layer Super Output Area (MSOA) in Leicestershire and Rutland. These deaths occurred between 1st March 2020 and 30th April 2021.
- Stoney Stanton, Sapcote & Sharnton in Blaby recorded 33 deaths involving Covid-19 in this time period, this represented 27.3% of all deaths. Kirby Muxloe and Thurlaston in Blaby recorded 31 deaths involving Covid-19 in this time period, this represented 26.7% of all deaths. Birstall Wanlip & Riverside in Charnwood recorded 30 deaths involving Covid-19 in this time period, this represented 24.6% of all deaths. Oadby North & East in Oadby and Wigston recorded 38 deaths involving Covid-19 which represented 23.6% of all deaths.
- Nationally, deaths involving Covid-19 made up under a fifth (17.1%) of all deaths.
- 12 MSOAs in Leicestershire and Rutland have a significantly lower percentage of deaths involving Covid-19 compared to England. These are:
 - Market Bosworth, Barlestone & Sheepy Magna in Hinckley and Bosworth (11, 10.0%)
 - Bottesford, Harby & Croxton Kerrial in Melton (12, 9.9%)
 - Loughborough – Outwoods in Charnwood (10, 9.6%)
 - Market Harborough Central in Harborough (10, 8.7%)
 - Broughton Astley in Harborough (8, 8.6%)
 - Thurmaston, Woodhouse & Bradgate in Charnwood (8, 8.3%)
 - Market Overton, Cottesmore & Empingham in Rutland (6, 8.3%)
 - Countesthorpe & Kilby in Blaby (6, 8.3%)
 - Thringstone & Swannington in North West Leicestershire (7, 7.8%)
 - Hinckley Clarendon Park in Hinckley and Bosworth (5, 7.7%)
 - Melton Mowbray South in Melton (7, 7.2%)
 - Fleckney, Kilworth & Foxton in Harborough (7, 5.7%)
- Further data examining deaths involving Covid-19 by local area is available in the dashboard available at [this link](#).

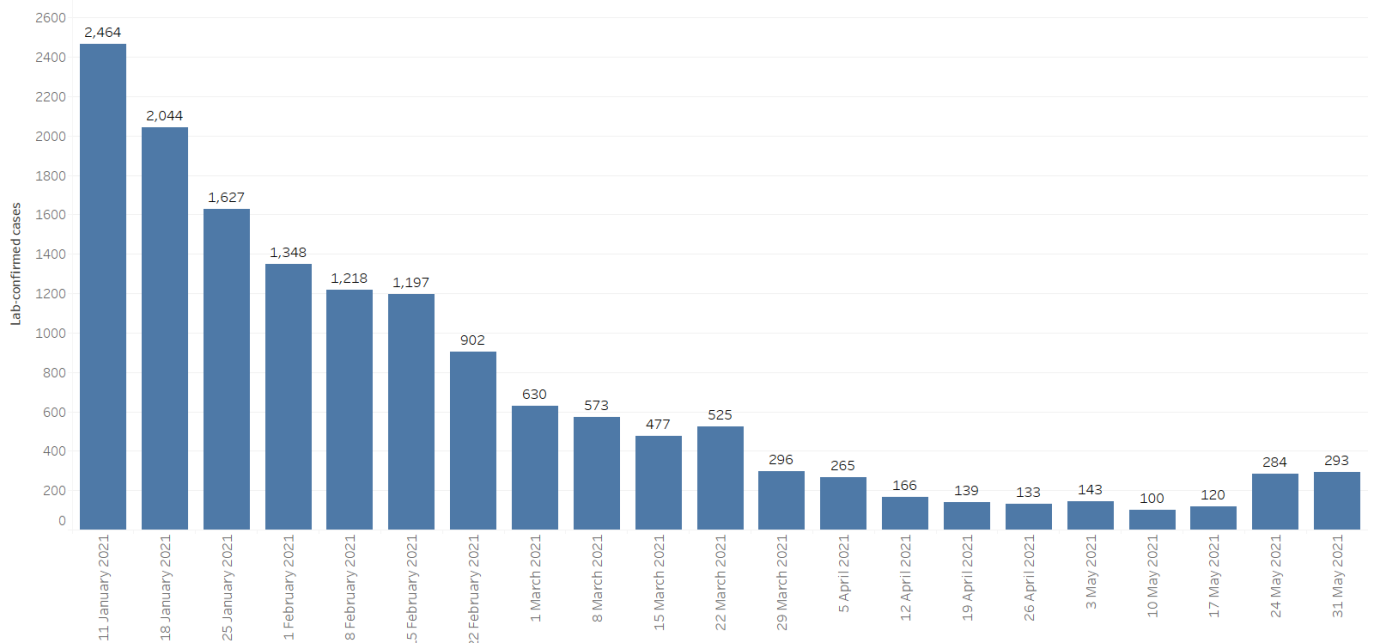
Statistical Significance compared to England of the deaths involving Covid-19 by Middle Layer Super Output Area, Leicestershire and Rutland, deaths occurring between 1st March 2020 and 30th April 2021.



4. Weekly counts of cases have increased in the past week in Leicestershire

Note: Public Health England has updated the way cases are reported in England. Reported cases are sometimes removed if subsequent tests are negative. This happens when cases identified through a positive rapid lateral flow test are followed by polymerase chain reaction (PCR) tests within 3 days that are all negative. This means cases may be retroactively removed or changed and as such the data may fluctuate.

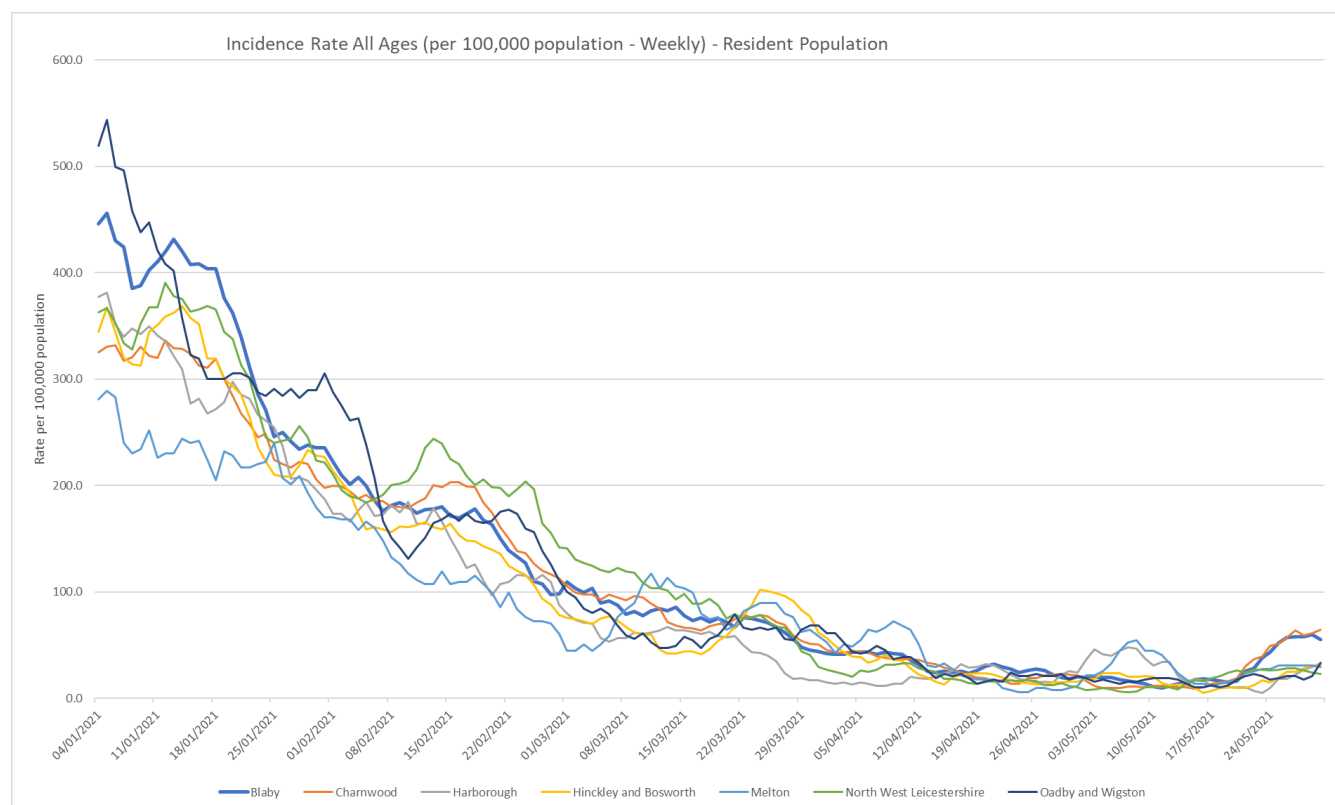
- As of 6th June, Leicestershire has recorded a total of 45,612 lab-confirmed cases of Covid-19. This data relates to pillar 1 and 2 cases.
- Throughout September and October to the second week of November the weekly counts of cases had shown an increasing trend in Leicestershire. For the two weeks following this, the counts of cases decreased. Between then and the end of December the case count increased, since then the weekly counts of cases have shown a decreasing trend with the exception of the last three weeks where the weekly counts of cases have increased week on week.
- The latest weekly data shows 293 cases have been confirmed in Leicestershire in the last week. This count has increased compared to the previous week where 284 cases were confirmed.



5. Charnwood has the highest weekly incidence rate of Covid-19 cases for people of all ages in the county

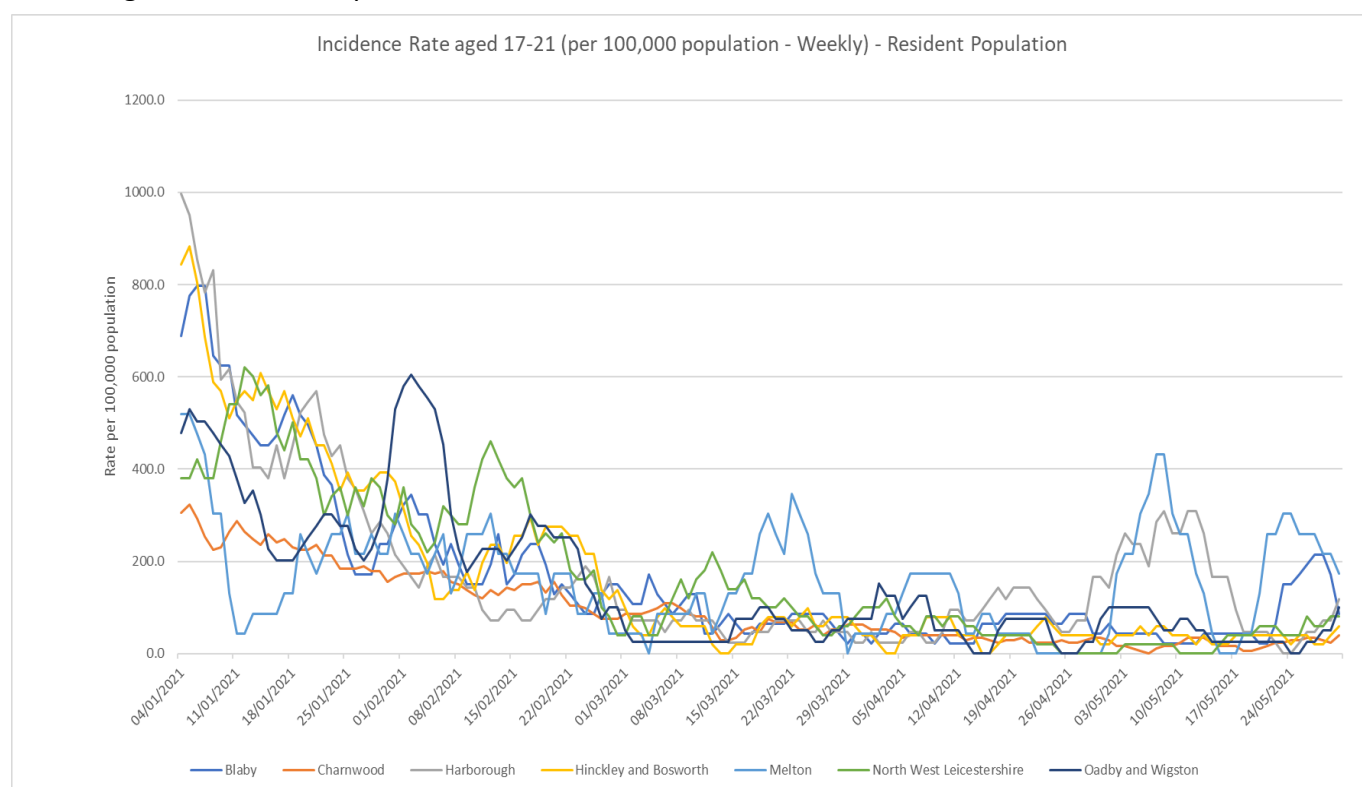
Note: Public Health England has updated the way cases are reported in England. Reported cases are sometimes removed if subsequent tests are negative. This happens when cases identified through a positive rapid lateral flow test are followed by polymerase chain reaction (PCR) tests within 3 days that are all negative. This means cases may be retroactively removed or changed and as such the data may fluctuate.

- The incidence rate for Covid-19 cases in Leicestershire had shown a declining trend between the beginning of January and the final week of April. The incidence rate in Leicestershire then fluctuated between the final week of April and the middle of May. Since then, the incidence rate has shown an increasing trend. The incidence rate in Leicestershire (42.6 per 100,000 population) is higher than the national rate (40.6 per 100,000 population) as of 30th May 2021.
- The latest weekly incidence rates of Covid-19 cases for people of all ages (as of 30th May) show that the following area rates in Leicestershire are higher than the national rate (40.6 per 100,000 population):
 - Charnwood; 64.6 per 100,000 (120 cases)
 - Blaby; 55.2 per 100,000 (56 cases)
- The following area rates in Leicestershire are lower than the national rate (40.6 per 100,000 population):
 - Oadby and Wigston; 33.3 per 100,000 (19 cases)
 - Harborough; 33.0 per 100,000 (31 cases)
 - Hinckley & Bosworth; 31.8 per 100,000 (36 cases)
 - Melton; 29.3 per 100,000 (15 cases)
 - North West Leicestershire; 23.2 per 100,000 (24 cases)
- Rutland has a lower incidence rate of Covid-19 cases (12.5 per 100,000) than England for people of all ages. This equates to 5 cases.



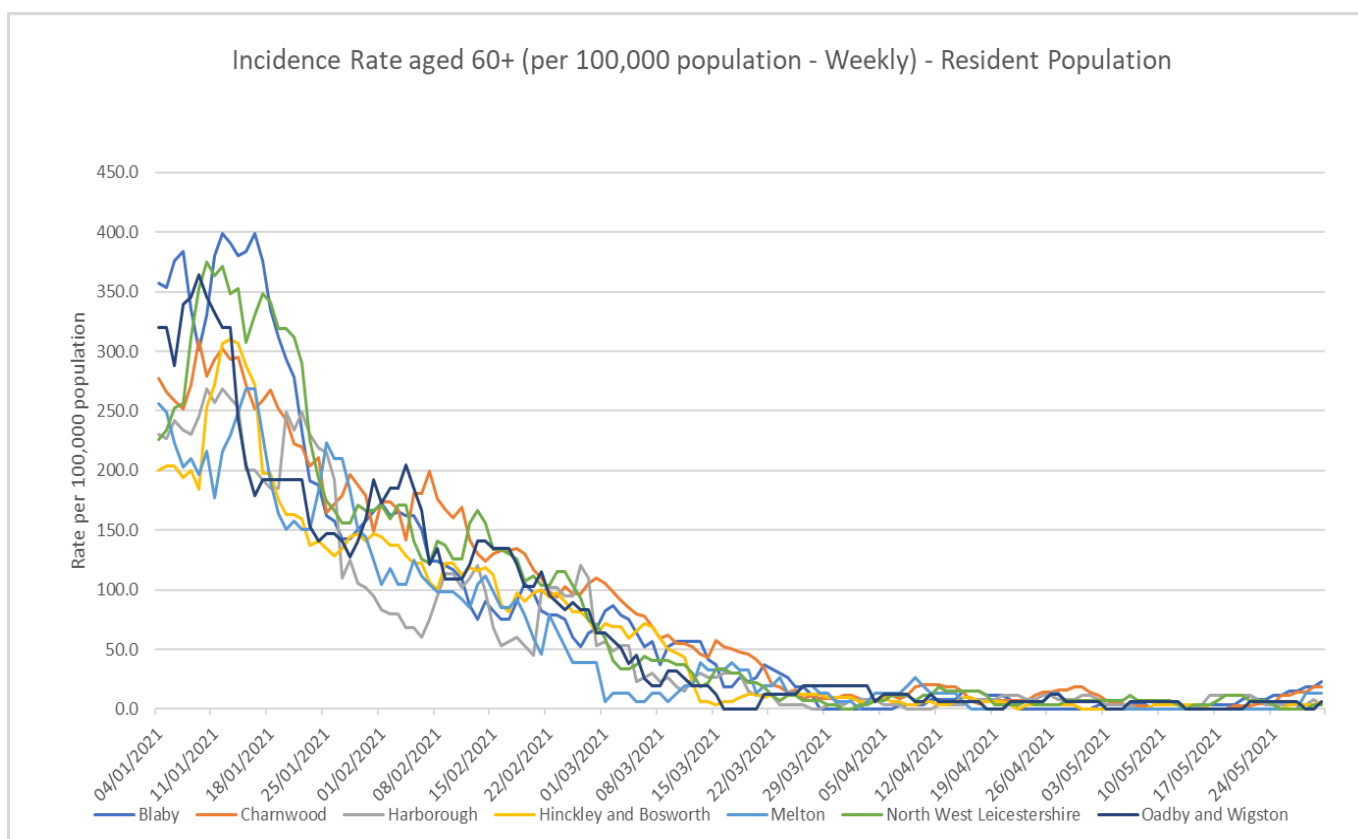
6. Melton has the highest weekly incidence rate of Covid-19 cases for people aged 17-21 in the county

- Between the 5th of January and the 5th of April the weekly incidence rate of Covid-19 for people aged 17-21 had been declining. Since the 5th of April the rate has fluctuated.
- As of the 30th of May, the rate for Leicestershire (72.8 per 100,000 population) is lower than the national rate for people aged 17-21 (92.4 per 100,000 population).
- The latest weekly incidence rates of Covid-19 cases for people aged 17-21 (as of 30th May) show that the following area rates in Leicestershire are higher than the national rate (92.4 per 100,000 population):
 - Melton; 173.1 per 100,000 (4 cases)
 - Harborough; 118.7 per 100,000 (5 cases)
 - Oadby & Wigston; 100.8 per 100,000 (4 cases)
- The following area rates in Leicestershire are lower than the national rate (92.4 per 100,000 population):
 - Blaby; 86.1 per 100,000 (4 cases)
 - North West Leicestershire; 80.1 per 100,000 (4 cases)
 - Hinckley & Bosworth; 58.8 per 100,000 (3 cases)
 - Charnwood; 40.3 per 100,000 (7 cases)
- Rutland has a lower incidence rate of Covid-19 cases (58.7 per 100,000) than England for people aged 17-21. This equates to 1 case.



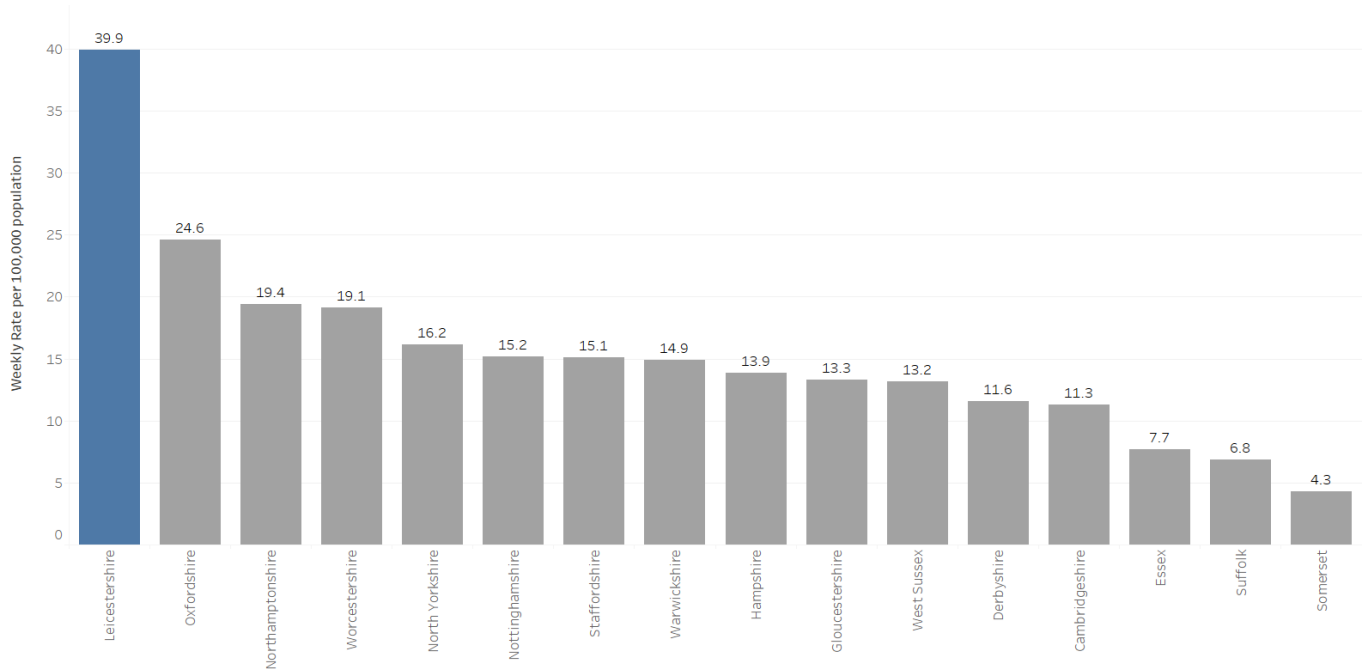
7. Blaby has the highest weekly incidence rate of Covid-19 cases for people aged 60+ in the county

- The incidence rate for Covid-19 cases in people aged 60+ in Leicestershire had been showing a declining trend since the beginning of January, with the exception of the first two weeks of April and the last two weeks where the rate showed an increasing trend. The rate for Leicestershire (11.3 per 100,000 population) is higher than the national rate (9.0 per 100,000 population) as of 30th May.
- The latest weekly incidence rates of Covid-19 cases for people aged 60+ (as of 30th May) show that the following area rates in Leicestershire are higher than the national rate (9.0 per 100,000 population):
 - Blaby; 22.6 per 100,000 (6 cases)
 - Charnwood; 18.3 per 100,000 (8 cases)
 - Melton; 13.1 per 100,000 (2 cases)
- The following area rates in Leicestershire are lower than the national rate (9.0 per 100,000 population) for people aged 60+:
 - Oadby & Wigston; 6.4 per 100,000 (1 case)
 - Hinckley & Bosworth; 6.3 per 100,000 (2 cases)
 - Harborough; 3.8 per 100,000 (1 case)
 - North West Leicestershire; 3.7 per 100,000 (1 case)
- Rutland has a lower incidence rate of Covid-19 cases (0.0 per 100,000) than England for people aged 60+. This equates to 0 cases.



8. Leicestershire has seen an increase in the weekly rate of Covid-19 cases

- There has been an increase in the weekly rate of Covid-19 cases in Leicestershire from 17.1 (per 100,000 population) in week 20 of 2021 to 39.9 (per 100,000 population) in week 21 of 2021.
- As of week 21 (24th May to 30th May 2021), Leicestershire is ranked 37th (highest) out of 149 upper tier local authorities and ranked the 1st (highest) out of its CIPFA similar areas.



9. The MSOA with the highest count of Covid-19 cases in the last week was Loughborough Lemyngton & Hastings in Charnwood.

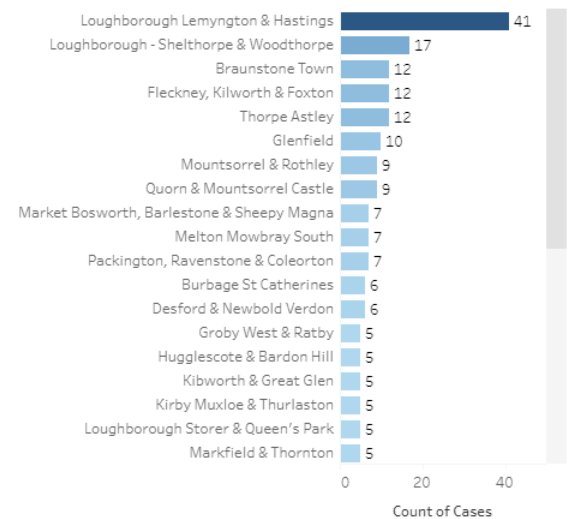
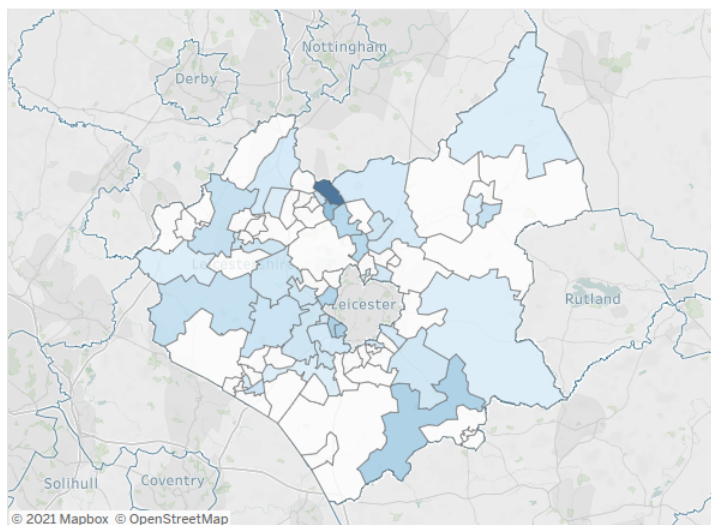
- Up to 1st June (week 21 of 2021), the Middle Super Output Area (MSOA) with the highest count of confirmed cases of Covid-19 was Loughborough Lemyngton & Hastings with 41 reported cases. This was followed by:
 - Loughborough – Shelthorpe & Woodthorpe (17)
 - Braunstone Town (12), Fleckney, Kilworth & Foxton (12) and Thorpe Astley (12)
 - Glenfield (10)
 - Mountsorrel & Rothley (9), Quorn & Mountsorrel Castle (9)
 - Market Bosworth, Barlestone & Sheepy Magna (7), Melton Mowbray South (7), Packington, Ravenstone & Coleorton (7)
 - Burbage St Catherines (6), Desford & Newbold Verdon (6)
- All other areas recorded less than 6 cases in the last week.
- Areas that recorded between zero and two cases in the last week have been suppressed due to data disclosure and are represented as white in the map below.

Weekly Counts of Lab-confirmed Covid-19 cases by Middle Layer Super Output Area, Leicester, Leicestershire and Rutland

Date as number: 01/06/2021
 Local Authority: Leicestershire



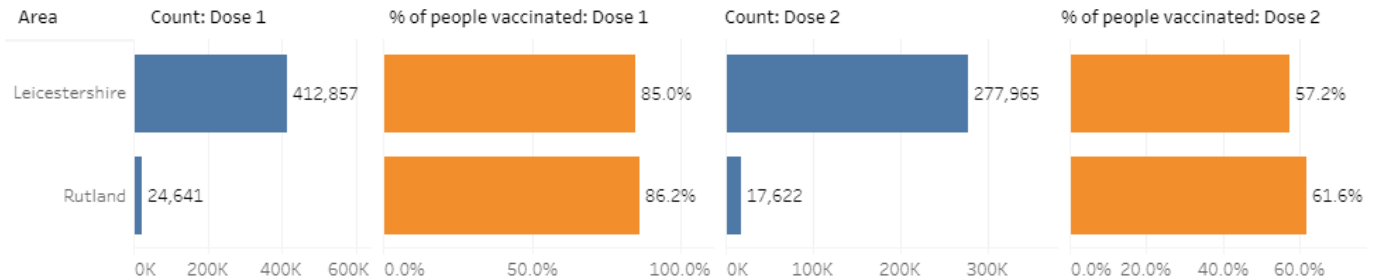
COVID-19 Cases: 0 41



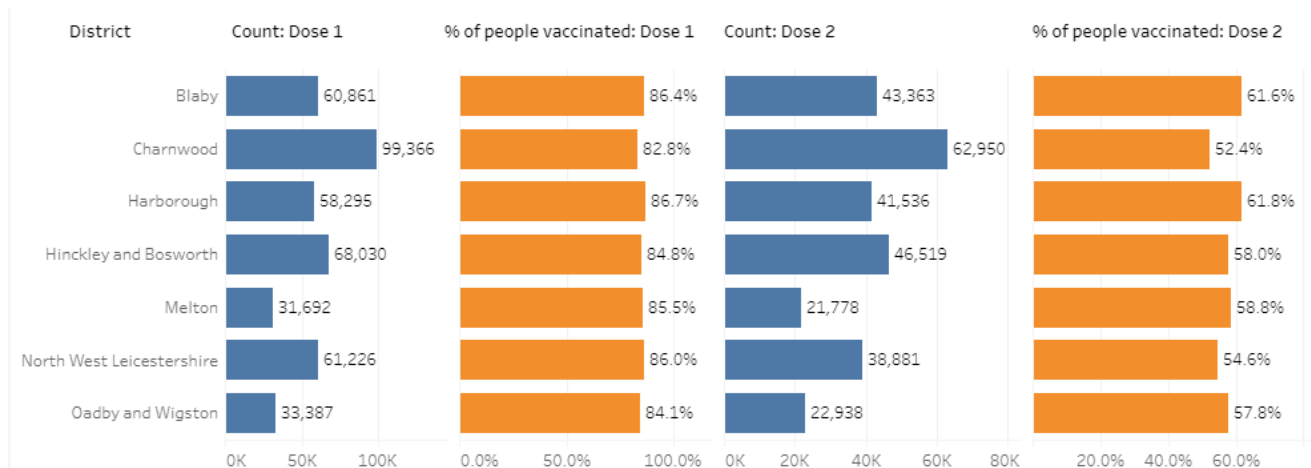
10. Covid-19 Vaccination Uptake Summary

The following tables show a summary of Covid-19 vaccination uptake by Local Authority and District with a breakdown for the over 30 age cohort.

- Up to 30th May 2021, the Covid-19 dose 1 vaccination uptake for the over 30 age cohort was 85.0% in Leicestershire and 86.2% in Rutland. The Covid-19 dose 2 vaccination uptake for the over 30 age cohort in Leicestershire was 57.2%, whilst the dose 2 uptake in Rutland was 61.6%.

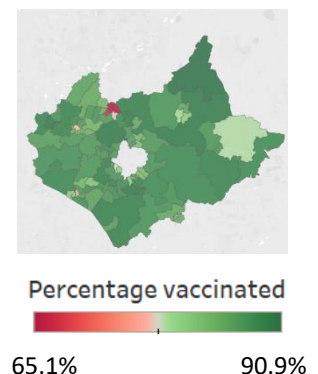


- All districts have a Covid-19 dose 1 vaccination uptake for the over 30 age cohort of over 82%, with Harborough having the highest uptake with 86.7% and Charnwood having the lowest with 82.8%. Most districts (apart from Charnwood and North West Leicestershire) have a Covid-19 dose 2 vaccination uptake for the over 30 age cohort of at least 55%, with Harborough having the highest uptake with 61.8% and Charnwood having the lowest with 52.4%.



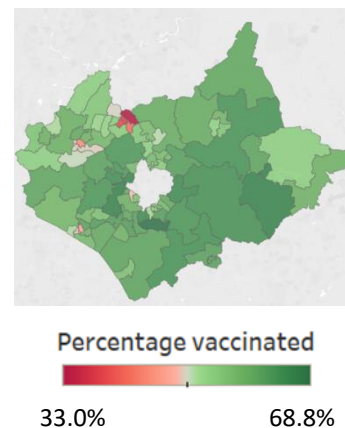
The following map shows a summary of Covid-19 vaccination uptake (dose 1) in Leicestershire and Rutland by Middle Super Output Area (MSOA) for the over 30 age cohort.

- Up to 30th May 2021, Bottesford, Harby & Croxton Kerrial was the MSOA with the highest Covid-19 vaccination uptake for the over 30 age cohort with an uptake of 90.9%. This was followed by:
 - Ashby de la Zouch South; 90.3%
 - Countesthorpe & Kilby; 90.2%
 - Waltham, Wymondham & Great Dalby; 89.9%
 - Thurcaston, Woodhouse & Bradgate; 89.9%
- Loughborough Lemyngton & Hastings was the MSOA with the lowest Covid-19 vaccination uptake for the over 30 age cohort with an uptake of 65.1%. This was followed by:
 - Loughborough Storer & Queen's Park; 65.2%
 - Loughborough – University; 67.1%
 - Hinckley Central; 76.5%
 - Coalville; 76.9%



The following map shows a summary of Covid-19 vaccination uptake (dose 2) in Leicestershire and Rutland by Middle Super Output Area (MSOA) for the over 30 age cohort.

- Up to 30th May 2021, Countesthorpe & Kilby was the MSOA with the highest Covid-19 vaccination uptake for the over 30 age cohort with an uptake of 68.8%. This was followed by:
 - Oakham East; 66.6%
 - Kirby Muxloe & Thurlaston; 66.4%
 - Uppingham, Lyddington & Braunston; 66.2%
 - Glenfield; 65.8%
- Loughborough Lemyngton & Hastings was the MSOA with the lowest Covid-19 vaccination uptake for the over 30 age cohort with an uptake of 33.0%. This was followed by:
 - Loughborough Storer & Queen's Park; 38.1%
 - Loughborough - University; 39.1%
 - Loughborough – Shelthorpe & Woodthorpe; 42.6%
 - Coalville; 45.6%



11. District Level Summary

- **Oadby & Wigston** continues to have the highest rate of Covid-19 cases and deaths in the county. The rate of cumulative cases is significantly higher in comparison to the England average.
- From the beginning of September to the 9th November, the weekly counts of cases had shown an increasing trend in Oadby and Wigston. Between the w/c 9th November and the w/c 28th December, the weekly counts of cases fluctuated. Since then the weekly counts of cases have shown a declining trend in Oadby and Wigston, with the exception of the last six weeks where the counts of cases have fluctuated.
- The weekly counts of cases have increased from 12 in w/c 24th May to 25 in w/c 31st May.
- The latest weeks data on death occurrences shows no deaths involving Covid-19 were recorded in Oadby & Wigston in week 21 of 2021.
- **North West Leicestershire** has the fourth highest rate of Covid-19 cases and the second highest rate of deaths in the county. The rate of cumulative cases is significantly lower than the England average.
- From early September to the 9th November an increasing trend in the weekly counts of cases had been witnessed in North West Leicestershire. Following this, the weekly counts of cases decreased each week for four weeks. The weekly counts of cases then increased for three weeks, before showing a declining trend throughout January, February, March, April and into May. Since the first week of May, the weekly counts of cases have shown an increasing trend.
- The latest weekly counts of cases have decreased from 29 in w/c 24th May to 21 in w/c 31st May.
- The latest weekly count of deaths involving Covid-19 show no deaths involving Covid-19 occurred in North West Leicestershire in week 21 of 2021.
- **Blaby** has the second highest rate of Covid-19 cases in the county and the third highest rate of deaths. The rate of cumulative cases is not significantly different to the England average.
- From mid-September, the weekly counts of cases in Blaby had shown an increasing trend, with a peak around the 9th of November. From then, the weekly counts of cases have fluctuated, with the exception of the last three weeks of December and the first week of January where the weekly counts of cases increased each week. Since the 4th of January, the weekly counts of cases have shown a declining trend in Blaby.
- The latest weekly counts of cases have decreased from 59 in w/c 24th May to 55 in w/c 31st May.
- The latest weeks data shows no deaths involving Covid-19 were recorded in Blaby in week 21 of 2021.
- **Melton** has the lowest rate of Covid-19 cases and the fourth highest rate of deaths in the county. The rate of cumulative cases is significantly lower than the England average.
- From mid-September, the weekly counts of cases had been increasing week on week in Melton, showing a peak around the 9th of November. A second peak was witnessed around 28th of December. Through January to the end of March weekly counts of cases had shown a declining trend, since then the weekly counts of cases in Melton have fluctuated.
- The latest weekly counts of cases have remained constant with 16 in w/c 24th May and 16 in w/c 31st May.
- The latest weekly count of deaths involving Covid-19 shows that one death occurred in Melton in week 21 of 2021; this death occurred in 'other settings'.

- **Hinckley & Bosworth** has the second lowest rate of Covid-19 cases and third lowest rate of deaths in the county. The rate of cumulative cases is significantly lower compared to the England average.
 - From mid-September to the 9th of November, the weekly counts of cases had increased each week in Hinckley and Bosworth. The weekly counts of cases had fluctuated from November 9th to January 11th. Between January 11th and March 15th the weekly counts of cases decreased, since then the cases have fluctuated
 - The latest weekly counts of cases have increased from 28 w/c 24th May to 35 in w/c 31st May.
 - The latest weeks data shows no deaths involving Covid-19 were recorded in Hinckley & Bosworth in week 21 of 2021.
-
- **Charnwood** has the third highest rate of Covid-19 cases and the second lowest rate of deaths in the county. The rate of cumulative cases is not significantly different in comparison to the England average.
 - The weekly counts of cases in Charnwood had shown an increasing trend from early September to mid-October, showing a peak around the 19th of October. Between the 19th of October and the 23rd November the weekly counts of cases showed a declining trend. Following this, the weekly counts of cases increased each week in Charnwood, peaking around December 28th. The rate then showed a declining trend until the 3rd of May, before fluctuating over the past 4 weeks.
 - The latest weekly counts of cases have decreased from 119 in w/c 24th May to 106 in w/c 31st May.
 - The latest weeks data shows no deaths involving Covid-19 was recorded in Charnwood in week 21 of 2021.
-
- **Harborough** has the third lowest rate of Covid-19 cases and the lowest rate of deaths in the county. The rate of cumulative cases is significantly lower in comparison to the England average.
 - From the beginning of September to the 9th November, the weekly counts of cases had shown an increasing trend in Harborough. Between the w/c 9th November and the w/c 7th December the weekly counts of cases showed a declining trend. Between then and December 28th, the weekly counts of cases had increased each week before showing a declining trend until the end of March. Throughout April up to the beginning of May the rate had shown an increasing trend. For the past 4 weeks, the rate has fluctuated.
 - The latest weekly counts of cases have increased from 21 in w/c 24th May to 35 in w/c 31st May.
 - The latest weeks data shows no deaths involving Covid-19 were recorded in Harborough in week 21 of 2021.

If you require information contained in this leaflet in another version e.g. large print, Braille, tape or alternative language please telephone: 0116 305 6803, Fax: 0116 305 7271 or Minicom: 0116 305 6160.

જો આપ આ માહિતી આપની ભાષામાં સમજવામાં થોડી મદદ ઇચ્છતાં હો તો 0116 305 6803 નંબર પર ફોન કરશો અને અમે આપને મદદ કરવા અવસ્થા કરીશું.

ਜੇਕਰ ਤੁਹਾਨੂੰ ਇਸ ਜਾਣਕਾਰੀ ਨੂੰ ਸਮਝਣ ਵਿਚ ਕੁਝ ਮਦਦ ਚਾਹੀਦੀ ਹੈ ਤਾਂ ਕਿਰਪਾ ਕਰਕੇ 0116 305 6803 ਨੰਬਰ ਤੇ ਫੋਨ ਕਰੋ ਅਤੇ ਅਸੀਂ ਤੁਹਾਡੀ ਮਦਦ ਲਈ ਕਿਸੇ ਦਾ ਪ੍ਰਬੰਧ ਕਰ ਦਵਾਂਗੇ।

এই তথ্য নিজের ভাষায় বুঝার জন্য আপনার যদি কোন সাহায্যের প্রয়োজন হয়, তবে 0116 305 6803 এই নম্বরে ফোন করলে আমরা উপযুক্ত ব্যক্তির ব্যবস্থা করবো।

اگر آپ کو یہ معلومات سمجھنے میں کچھ مدد درکار ہے تو براہ مہربانی اس نمبر پر کال کریں
0116 305 6803 اور ہم آپ کی مدد کے لئے کسی کا انتظام کر دیں گے۔

假如閣下需要幫助，用你的語言去明白這些資訊，請致電 0116 305 6803，我們會安排有關人員為你提供幫助。

Jeżeli potrzebujesz pomocy w zrozumieniu tej informacji w Twoim języku, zadzwoń pod numer 0116 305 6803, a my Ci pomożemy.

Strategic Business Intelligence Team
Strategy and Business Intelligence Branch

Chief Executive's Department
Leicestershire County Council
County Hall
Glenfield
Leicester
LE3 8RA

ri@leics.gov.uk
www.lsr-online.org