

## COVID-19: Data Update for Leicestershire

Period 30 June 2021 to 6 July 2021

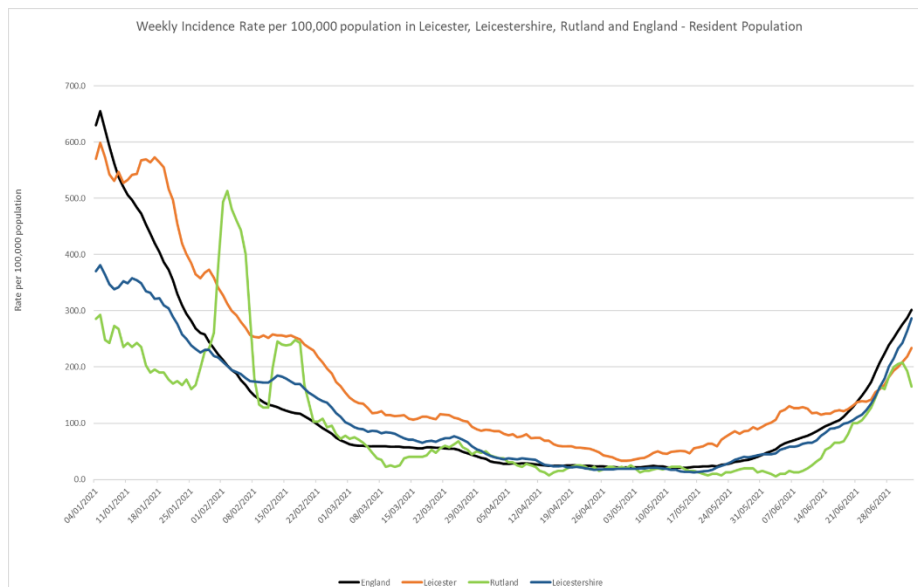
# Headline Summary

### 1. Position Statement from the Director of Public Health for Leicestershire

Rates of Covid-19 infection continue to escalate in Leicestershire, with a 74% increase compared to the previous seven day period. All districts across the County have witnessed an increase compared to the previous week and currently have rates above 200 per 100,000 population. North West Leicestershire (+211%) and Charnwood (+85%) have witnessed the biggest increase compared to last week, with the latest rates being above 370 per 100,000 population. Higher rates are amongst the younger and working population. The availability of lateral flow home test kits have been increased across the County.

### 2. Trend in Weekly Incidence Rate (All ages) – Leicester, Leicestershire, Rutland and England

- The national rate has increased from 287.7 (period 29<sup>th</sup> June to 5<sup>th</sup> July) to 301.5 per 100,000 population (period 30<sup>th</sup> June to 6<sup>th</sup> July). This latest rate reflects a percentage change increase of 45% compared to the previous 7 day period for England.
- The Leicestershire rate has increased from 264.0 (period 29<sup>th</sup> June to 5<sup>th</sup> July) to 286.9 per 100,000 population (period 30<sup>th</sup> June to 6<sup>th</sup> July). This latest rate reflects a percentage change increase of 74% compared to the previous 7 day period for Leicestershire. The rate in Leicestershire is lower than the national average.
- The rate for Leicester City stands at 233.8 per 100,000 population and is below the national average. The rate for Rutland stands at 165.3 per 100,000 population and is below the national average.

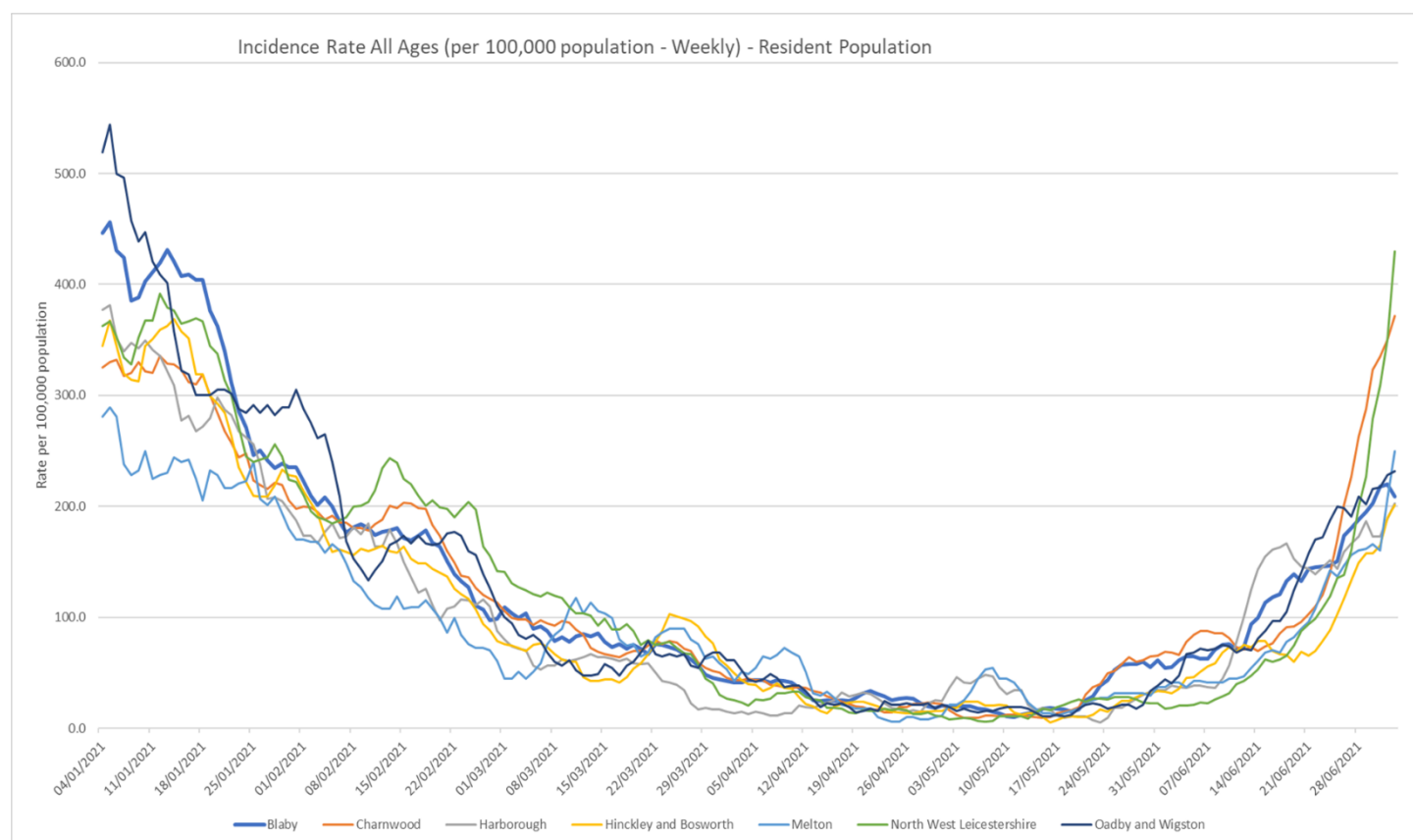


Source: PHE Power BI Line Lists

### 3. Trend in Weekly Incidence Rate (all ages) – Leicestershire Districts

- NWL has the highest rate in the county (429.5 per 100,000, 445 cases), followed by Charnwood (371.8 per 100,000, 691 cases), Melton (250.0 per 100,000, 128 cases), O&W (231.5 per 100,000, 132 cases), Blaby (208.8 per 100,000, 212 cases), Harborough (202.5 per 100,000 population, 190 cases), and H&B (201.5 per 100,000 population, 228 cases). Compared to the previous week, all districts have increased like nationally.

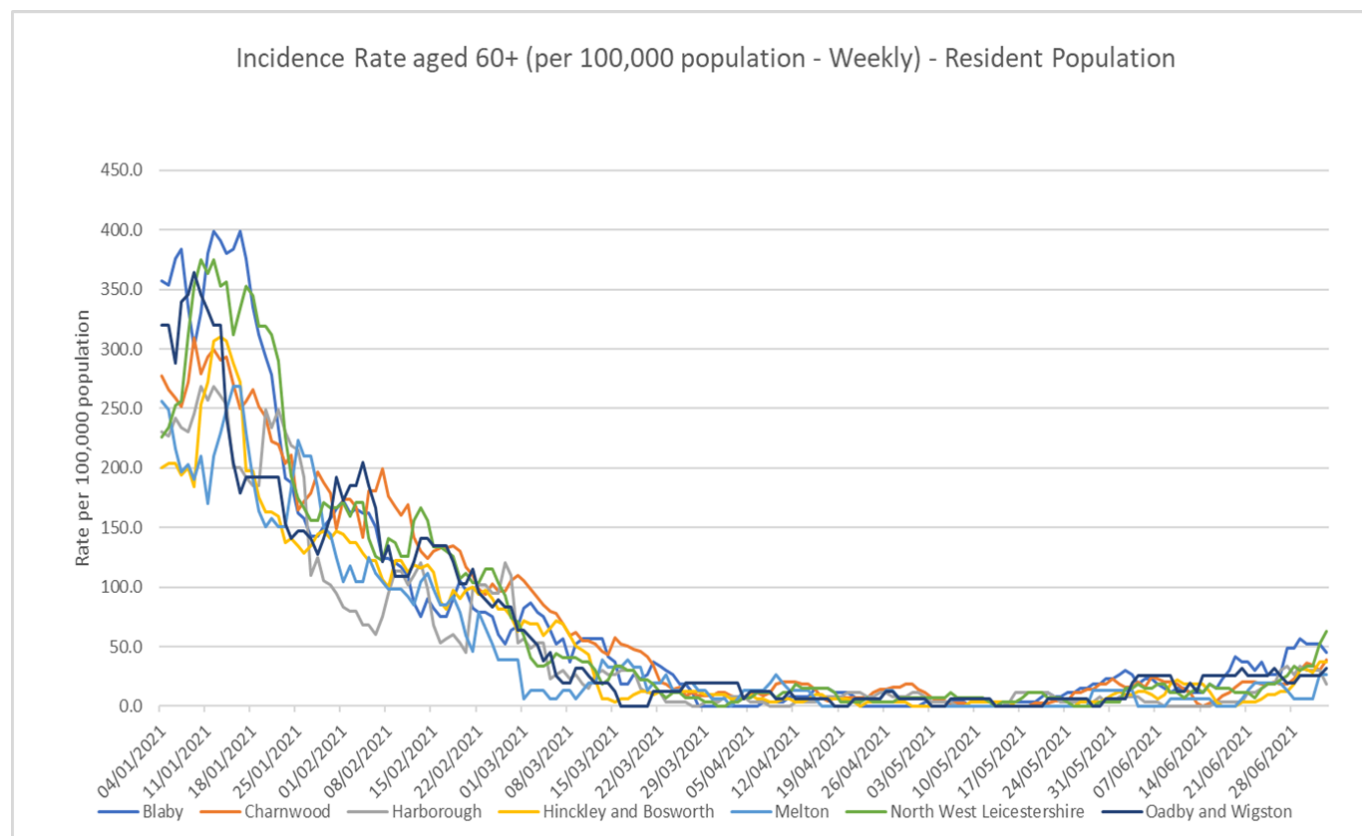
Indicator	Blaby	Charnwood	Harborough	Hinckley & Bosworth	Melton	NW Leicestershire	Oadby and Wigston	Leicestershire	England
Weekly incidence rate per 100,000 population (All Ages)	208.8	371.8	202.5	201.5	250.0	429.5	231.5	286.9	301.5
Weekly count of cases (All Ages)	212	691	190	228	128	445	132	2026	169723
Percentage change in cases from previous 7 days (All Ages)	20%	85%	28%	73%	71%	211%	17%	74%	45%
Weekly incidence rate per 100,000 population (60+)	45.1	38.9	18.9	37.6	26.2	63.1	32.0	38.6	56.1
Weekly count of cases (60+)	12	17	5	12	4	17	5	72	1526
Percentage individuals testing positive (weekly)	8.4%	11.7%	7.2%	6.6%	8.2%	11.8%	6.3%		7.1%



Source: PHE Power BI Line Lists

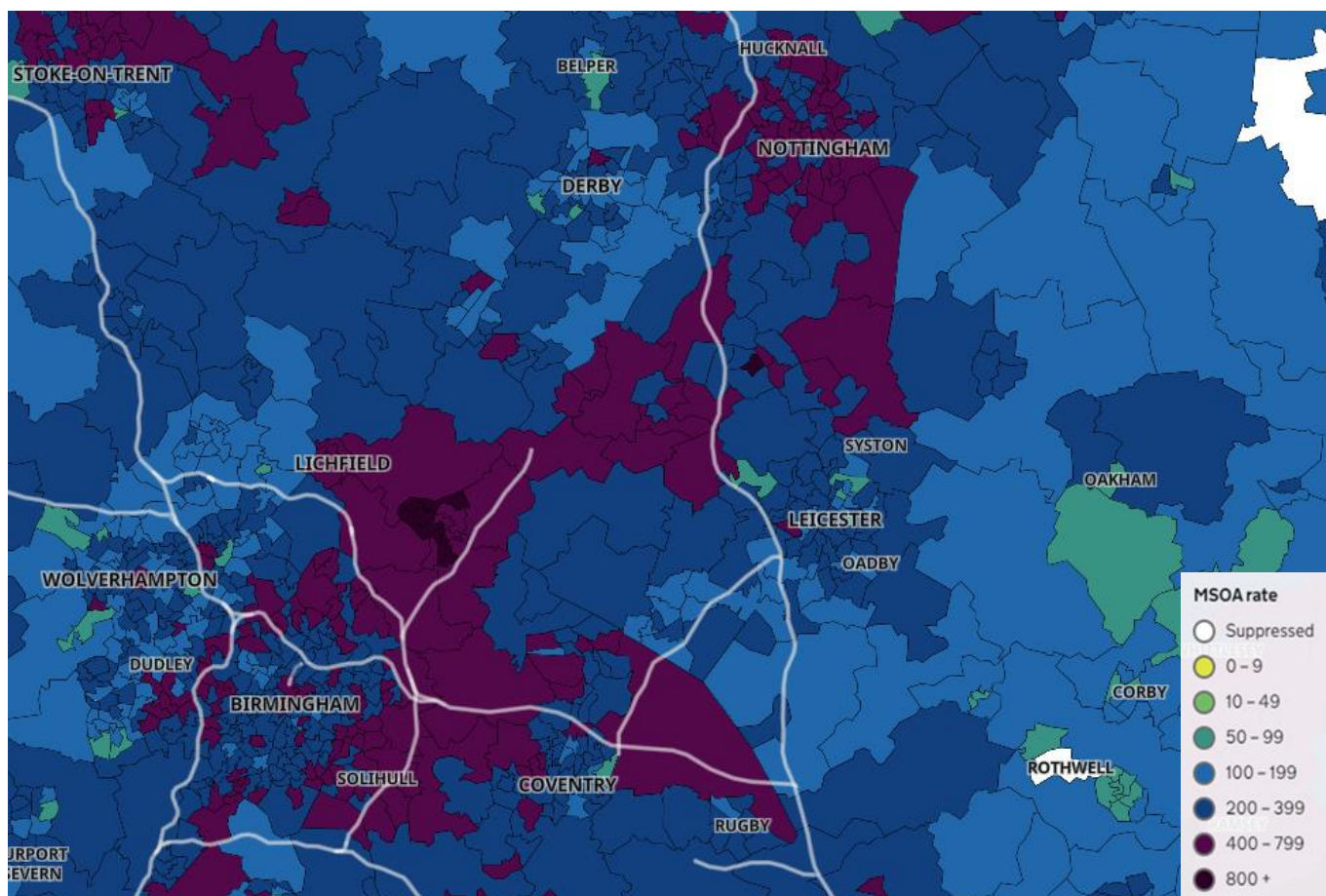
#### 4. Trend in Weekly Incidence Rate (60+) – Leicestershire Districts

- The data for 60+ population show the rate for Leicestershire is 38.6 per 100,000 population, lower than the national rate of 56.1 per 100,000 population. NWL has the highest rate in the county (63.1 per 100,000 population, 17 cases) followed by Blaby (45.1, 12 cases), Charnwood (38.9, 17 cases), H&B (37.6, 12 cases), O&W (32.0, 5 cases), Melton (26.2, 4 cases), and Harborough (18.9, 5 cases). Compared to the previous week most districts have increased like nationally, apart from Harborough which has decreased.



Source: PHE Power BI Line Lists

## 5. Weekly Cases by Middle Super Output Area (MSOA)



Source: PHE Coronavirus (COVID-19) in the UK Dashboard

If you require information contained in this leaflet in another version e.g. large print, Braille, tape or alternative language please telephone: 0116 305 6803, Fax: 0116 305 7271 or Minicom: 0116 305 6160.

જો આપ આ માહિતી આપની ભાષામાં સમજવામાં થોડી મદદ ઇચ્છતાં હો તો 0116 305 6803 નંબર પર ફોન કરશો અને અમે આપને મદદ કરવા અવસ્થા કરીશું.

ਜੇਕਰ ਤੁਹਾਨੂੰ ਇਸ ਜਾਣਕਾਰੀ ਨੂੰ ਸਮਝਣ ਵਿਚ ਕੁਝ ਮਦਦ ਚਾਹੀਦੀ ਹੈ ਤਾਂ ਕਿਰਪਾ ਕਰਕੇ 0116 305 6803 ਨੰਬਰ ਤੇ ਫੋਨ ਕਰੋ ਅਤੇ ਅਸੀਂ ਤੁਹਾਡੀ ਮਦਦ ਲਈ ਕਿਸੇ ਦਾ ਪ੍ਰਬੰਧ ਕਰ ਦਵਾਂਗੇ।

এই তথ্য নিজের ভাষায় বুঝার জন্য আপনার যদি কোন সাহায্যের প্রয়োজন হয়, তবে 0116 305 6803 এই নম্বরে ফোন করলে আমরা উপযুক্ত ব্যক্তির ব্যবস্থা করবো।

اگر آپ کو یہ معلومات سمجھنے میں کچھ مدد درکار ہے تو براہ مہربانی اس نمبر پر کال کریں 0116 305 6803 اور ہم آپ کی مدد کے لئے کسی کا انتظام کر دیں گے۔

假如閣下需要幫助，用你的語言去明白這些資訊，請致電 0116 305 6803，我們會安排有關人員為你提供幫助。

Jeżeli potrzebujesz pomocy w zrozumieniu tej informacji w Twoim języku, zadzwoń pod numer 0116 305 6803, a my Ci pomożemy.

**12 July 2021**

Strategic Business Intelligence Team  
Business Intelligence  
Chief Executive's Department  
Leicestershire County Council  
County Hall, Glenfield  
Leicester LE3 8RA

Tel 0116 305 6059  
Email: [Kajal.lad@leics.gov.uk](mailto:Kajal.lad@leics.gov.uk)

Produced by the Strategic Business Intelligence Team at Leicestershire County Council.

Whilst every effort has been made to ensure the accuracy of the information contained within this report, Leicestershire County Council cannot be held responsible for any errors or omission relating to the data contained within the report.