

## COVID-19: Data Update for Leicestershire

Period 14 July 2021 to 20 July 2021

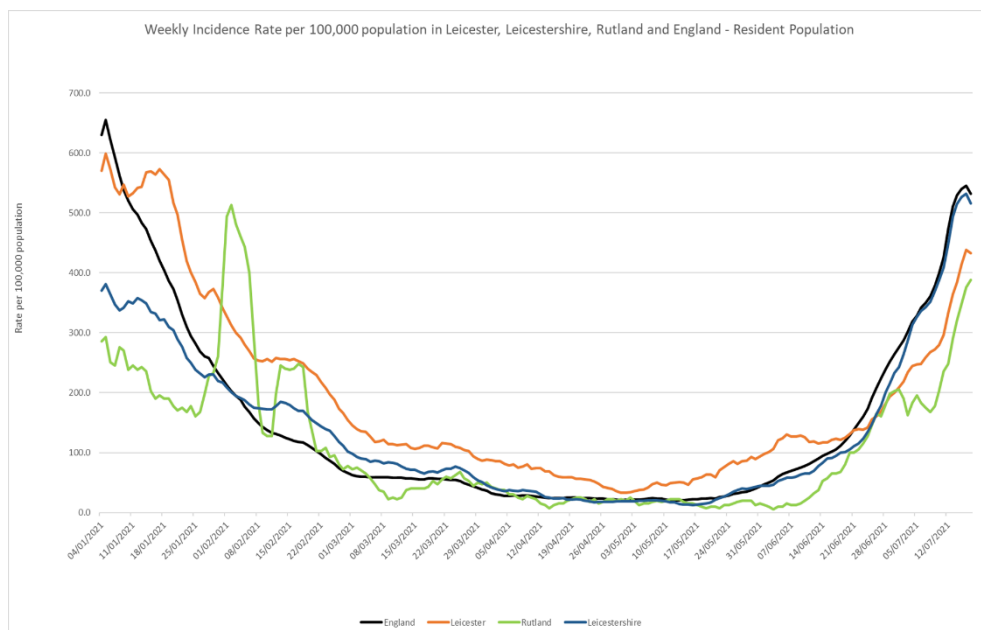
# Headline Summary

### 1. Position Statement from the Director of Public Health for Leicestershire

This week we welcome a slight decline in covid rates, but it is still important to reiterate last week's message: It is up to all of us to do the right thing and avoid spread to avoid further pressure on the NHS and the epidemic of ill health that is causing problems to people and business.

### 2. Trend in Weekly Incidence Rate (All ages) – Leicester, Leicestershire, Rutland and England

- The national rate has decreased from 545.3 (period 13<sup>th</sup> July to 19<sup>th</sup> July) to 532.1 per 100,000 population (period 14<sup>th</sup> July to 20<sup>th</sup> July). This latest rate reflects a percentage change increase of 33% compared to the previous 7 day period for England.
- The Leicestershire rate has decreased from 531.9 (period 13<sup>th</sup> July to 19<sup>th</sup> July) to 516.3 per 100,000 population (period 14<sup>th</sup> July to 20<sup>th</sup> July). This latest rate reflects a percentage change increase of 33% compared to the previous 7 day period for Leicestershire. The rate in Leicestershire is lower than the national average.
- The rate for Leicester City stands at 432.5 per 100,000 population and is below the national average. The rate for Rutland stands at 388.2 per 100,000 population and is below the national average.

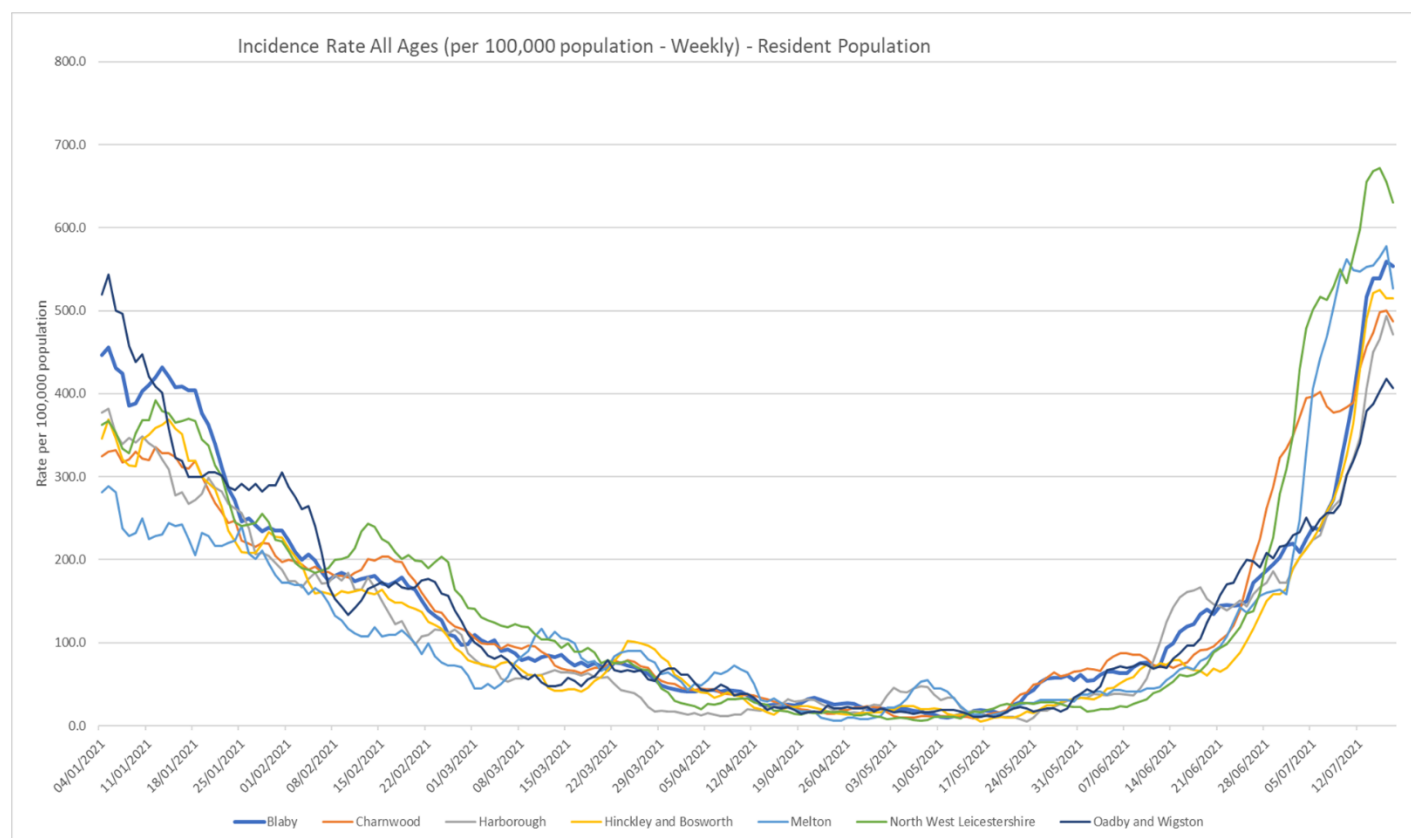


Source: PHE Power BI Line Lists

### 3. Trend in Weekly Incidence Rate (all ages) – Leicestershire Districts

- NWL has the highest rate in the county (630.2 per 100,000, 653 cases), followed by Blaby (553.6 per 100,000, 562 cases), Melton (527.3 per 100,000, 270 cases), H&B (514.4 per 100,000, 582 cases), Charnwood (486.9 per 100,000, 905 cases), Harbrough (471.2 per 100,000 population, 442 cases), and O&W (406.9 per 100,000 population, 232 cases). Compared to the previous week, most districts (apart from Melton which has decreased) have increased like nationally.

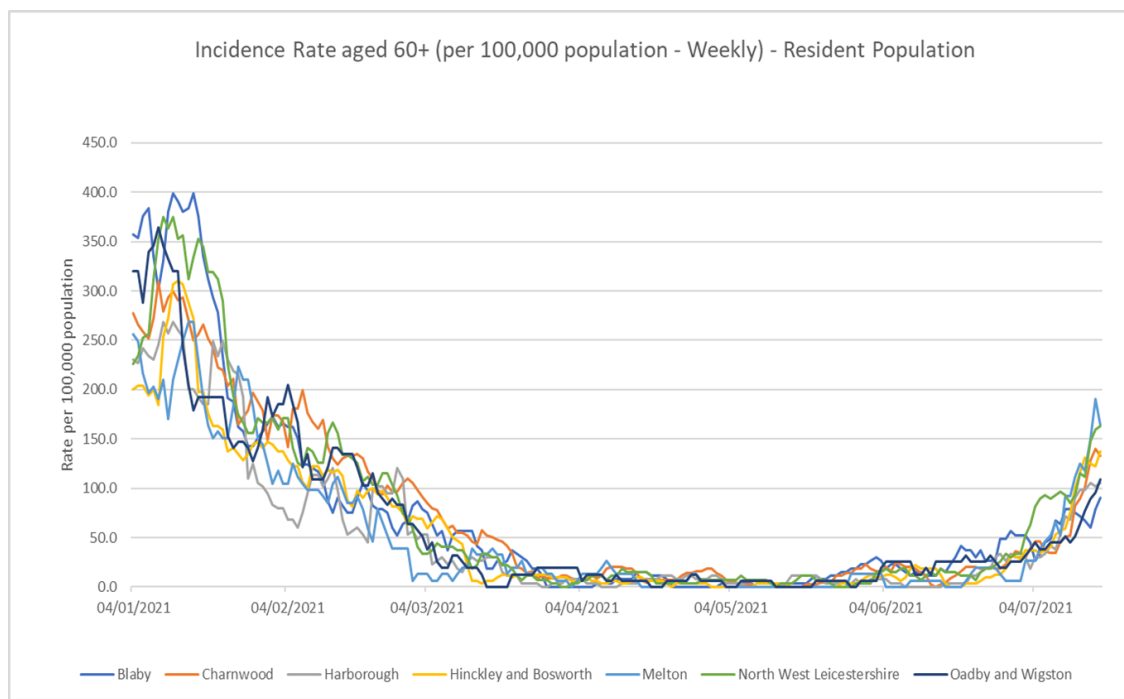
Indicator	Blaby	Charnwood	Harbrough	Hinckley & Bosworth	Melton	NW Leicestershire	Oadby and Wigston	Leicestershire	England
Weekly incidence rate per 100,000 population (All Ages)	553.6	486.9	471.2	514.4	527.3	630.2	406.9	516.3	532.1
Weekly count of cases (All Ages)	562	905	442	582	270	653	232	3646	299512
Percentage change in cases from previous 7 days (All Ages)	57%	27%	56%	58%	-6%	18%	35%	33%	33%
Weekly incidence rate per 100,000 population (60+)	90.3	132.8	105.8	137.8	164.0	163.3	108.8	128.7	129.9
Weekly count of cases (60+)	24	58	28	44	25	44	17	240	1526
Percentage individuals testing positive (weekly)	18.2%	15.7%	14.7%	16.1%	15.9%	17.8%	11.0%		11.9%



Source: PHE Power BI Line Lists

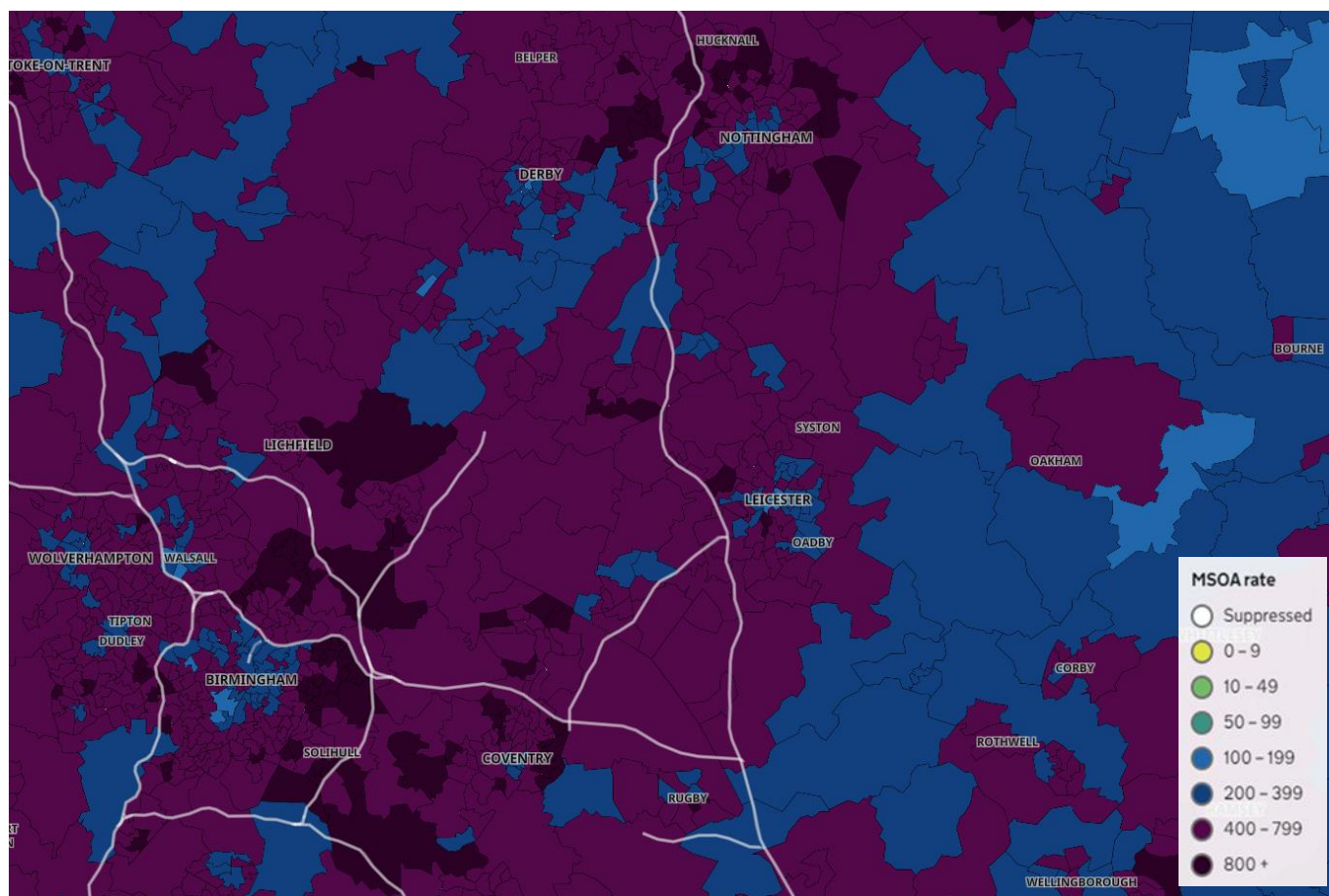
#### 4. Trend in Weekly Incidence Rate (60+) – Leicestershire Districts

- The data for 60+ population show the rate for Leicestershire is 128.7 per 100,000 population, lower than the national rate of 129.9 per 100,000 population. Melton has the highest rate in the county (164.0 per 100,000 population, 25 cases) followed by NWL (163.3, 44 cases), H&B (137.8, 44 cases), Charnwood (132.8, 58 cases), O&W (108.8, 17 cases), Harborough (105.8, 28 cases) and Blaby (90.3, 24 cases). Compared to the previous week, all districts have increased like nationally.



Source: PHE Power BI Line Lists

## 5. Weekly Cases by Middle Super Output Area (MSOA)



Source: PHE Coronavirus (COVID-19) in the UK Dashboard

If you require information contained in this leaflet in another version e.g. large print, Braille, tape or alternative language please telephone: 0116 305 6803, Fax: 0116 305 7271 or Minicom: 0116 305 6160.

જો આપ આ માહિતી આપની ભાષામાં સમજવામાં થોડી મદદ ઇચ્છતાં હો તો 0116 305 6803 નંબર પર ફોન કરશો અને અમે આપને મદદ કરવા અવસ્થા કરીશું.

ਜੇਕਰ ਤੁਹਾਨੂੰ ਇਸ ਜਾਣਕਾਰੀ ਨੂੰ ਸਮਝਣ ਵਿਚ ਕੁਝ ਮਦਦ ਚਾਹੀਦੀ ਹੈ ਤਾਂ ਕਿਰਪਾ ਕਰਕੇ 0116 305 6803 ਨੰਬਰ ਤੇ ਫੋਨ ਕਰੋ ਅਤੇ ਅਸੀਂ ਤੁਹਾਡੀ ਮਦਦ ਲਈ ਕਿਸੇ ਦਾ ਪ੍ਰਬੰਧ ਕਰ ਦਵਾਂਗੇ।

এই তথ্য নিজের ভাষায় বুঝার জন্য আপনার যদি কোন সাহায্যের প্রয়োজন হয়, তবে 0116 305 6803 এই নম্বরে ফোন করলে আমরা উপযুক্ত ব্যক্তির ব্যবস্থা করবো।

اگر آپ کو یہ معلومات سمجھنے میں کچھ مدد درکار ہے تو براہ مہربانی اس نمبر پر کال کریں 0116 305 6803 اور ہم آپ کی مدد کے لئے کسی کا انتظام کر دیں گے۔

假如閣下需要幫助，用你的語言去明白這些資訊，請致電 0116 305 6803，我們會安排有關人員為你提供幫助。

Jeżeli potrzebujesz pomocy w zrozumieniu tej informacji w Twoim języku, zadzwoń pod numer 0116 305 6803, a my Ci pomożemy.

**26 July 2021**

Strategic Business Intelligence Team  
Business Intelligence  
Chief Executive's Department  
Leicestershire County Council  
County Hall, Glenfield  
Leicester LE3 8RA

Tel 0116 305 6059  
Email: [Kajal.lad@leics.gov.uk](mailto:Kajal.lad@leics.gov.uk)

Produced by the Strategic Business Intelligence Team at Leicestershire County Council.

Whilst every effort has been made to ensure the accuracy of the information contained within this report, Leicestershire County Council cannot be held responsible for any errors or omission relating to the data contained within the report.