

# COVID-19: Data Update for Leicestershire

Period 23 June 2021 to 29 June 2021

## Headline Summary

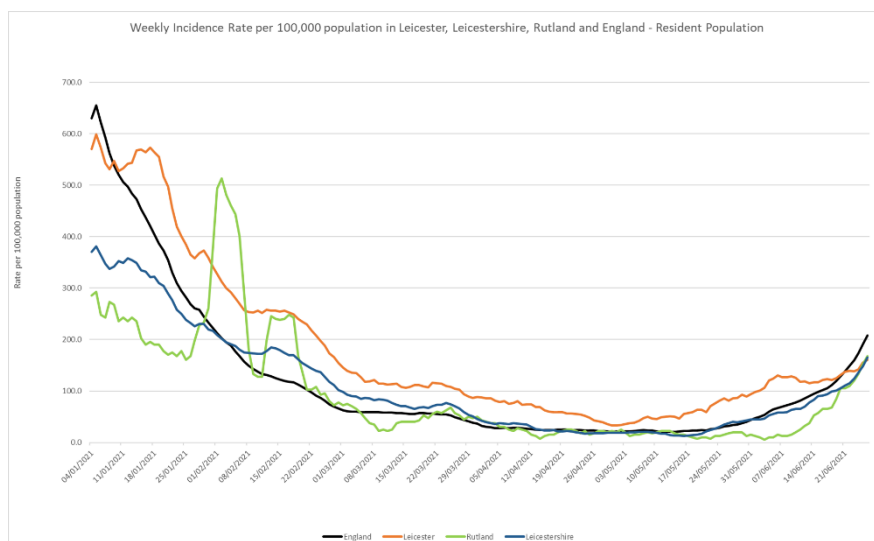
### 1. Position Statement from the Director of Public Health for Leicestershire

Rates of COVID-19 infection continue to rise across the County, with every district witnessing an increase compared to the previous week. Charnwood has witnessed the biggest increase with the rate rising to 203.4 (per 100,000 population) from 93.1 (per 100,000 population) last Monday. This increase is known to be linked to the student population around the Loughborough area. Higher rates are amongst the younger population, spreading through the community.

There has been a targeted push on testing and messaging in those smaller areas identified with a higher rate such as Fleckney, Thorpe Astley, Lutterworth, Anstey and Oadby South and West.

### 2. Trend in Weekly Incidence Rate (All ages) – Leicester, Leicestershire, Rutland and England

- The national rate has increased from 191.3 (period 22<sup>nd</sup> June to 28<sup>th</sup> June) to 208.0 per 100,000 population (period 23<sup>rd</sup> June to 29<sup>th</sup> June). This latest rate reflects a percentage change increase of 74% compared to the previous 7 day period for England.
- The Leicestershire rate has increased from 148.4 (period 22<sup>nd</sup> June to 28<sup>th</sup> June) to 165.0 per 100,000 population (period 23<sup>rd</sup> June to 29<sup>th</sup> June). This latest rate reflects a percentage change increase of 63% compared to the previous 7 day period for Leicestershire. The rate in Leicestershire is lower than the national average.
- The rate for Leicester City stands at 160.4 per 100,000 population and is below the national average. The rate for Rutland stands at 167.8 per 100,000 population and is below the national average.

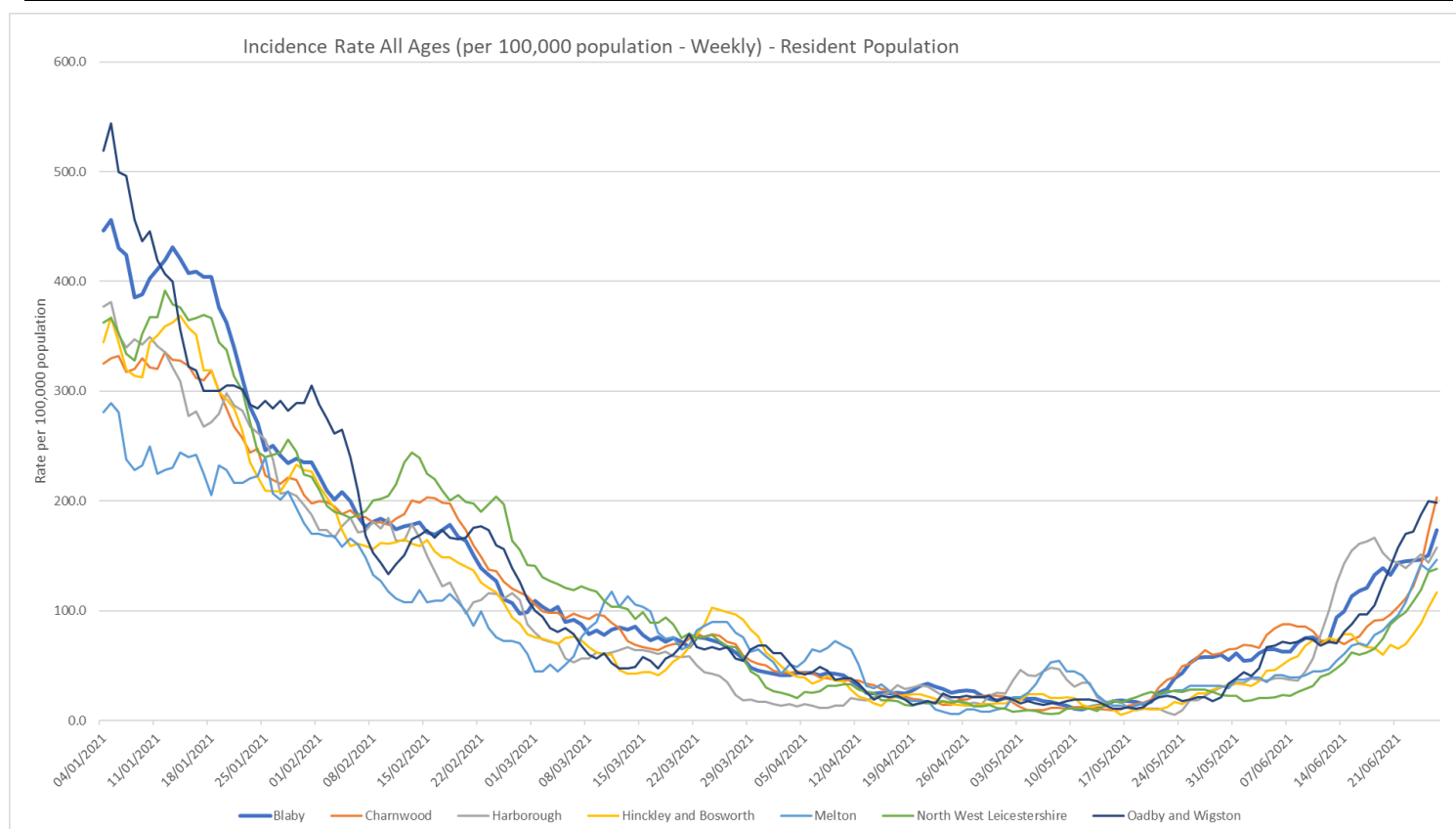


Source: PHE Power BI Line Lists

### 3. Trend in Weekly Incidence Rate (all ages) – Leicestershire Districts

- Charnwood has the highest rate in the county (203.4 per 100,000, 378 cases), followed by O&W (198.2 per 100,000, 113 cases), Blaby (173.4 per 100,000, 176 cases), Harborough (157.8 per 100,000, 148 cases), Melton (146.5 per 100,000, 75 cases), NWL (138.0 per 100,000, 143 cases) and H&B (116.7 per 100,000 population, 132 cases). Compared to the previous week, all districts have increased like nationally.

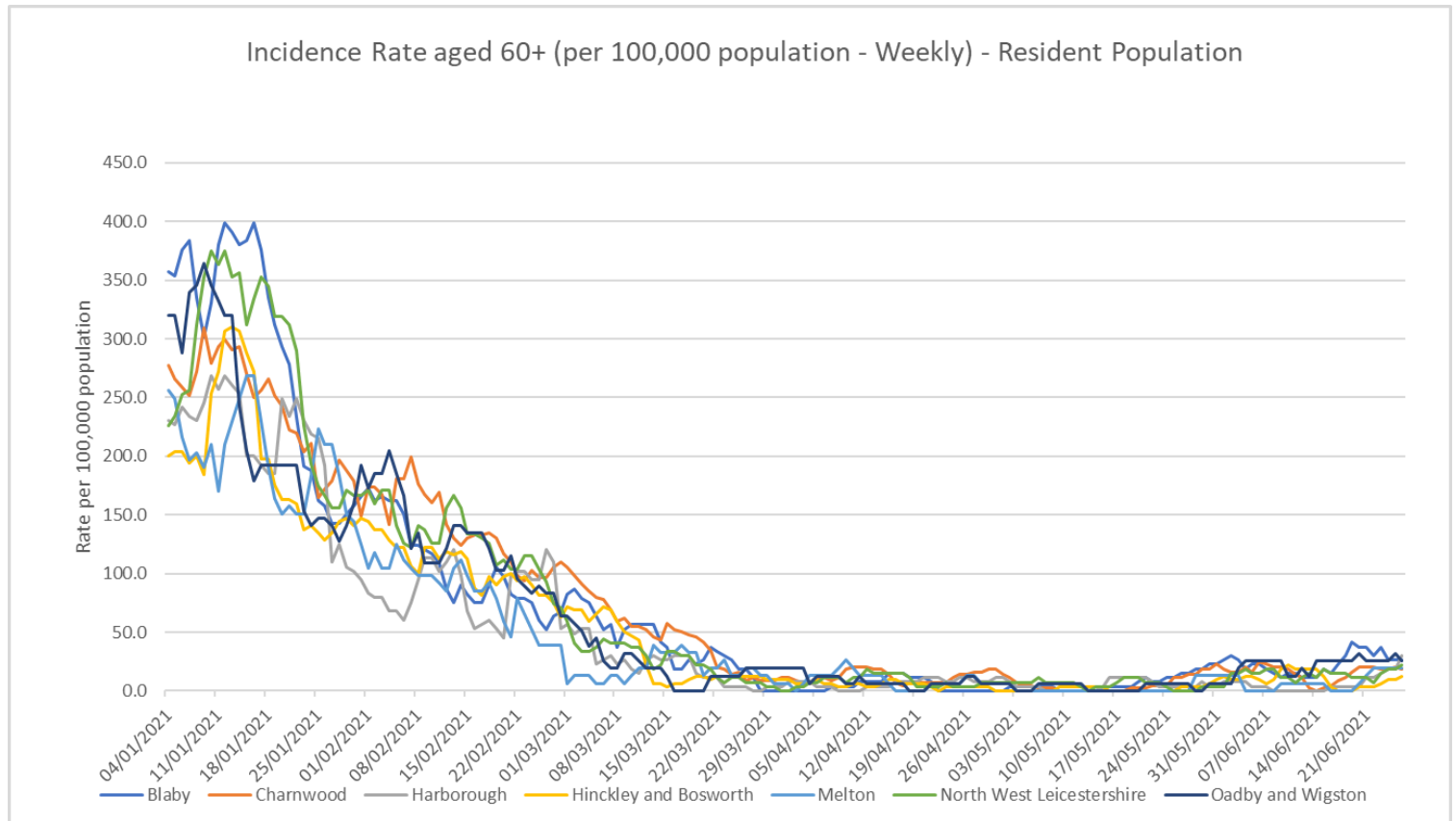
Indicator	Blaby	Charnwood	Harborough	Hinckley & Bosworth	Melton	NW Leicestershire	Oadby and Wigston	Leicestershire	England
Weekly incidence rate per 100,000 population (All Ages)	173.4	203.4	157.8	116.7	146.5	138.0	198.2	165.0	208.0
Weekly count of cases (All Ages)	176	378	148	132	75	143	113	1165	117062
Percentage change in cases from previous 7 days (All Ages)	25%	121%	3%	94%	79%	86%	59%	63%	74%
Weekly incidence rate per 100,000 population (60+)	26.3	18.3	30.2	12.5	19.7	22.3	25.6	21.4	34.7
Weekly count of cases (60+)	7	8	8	4	3	6	4	40	1526
Percentage individuals testing positive (weekly)	7.5%	6.9%	6.1%	4.3%	5.6%	5.1%	6.1%		5.4%



Source: PHE Power BI Line Lists

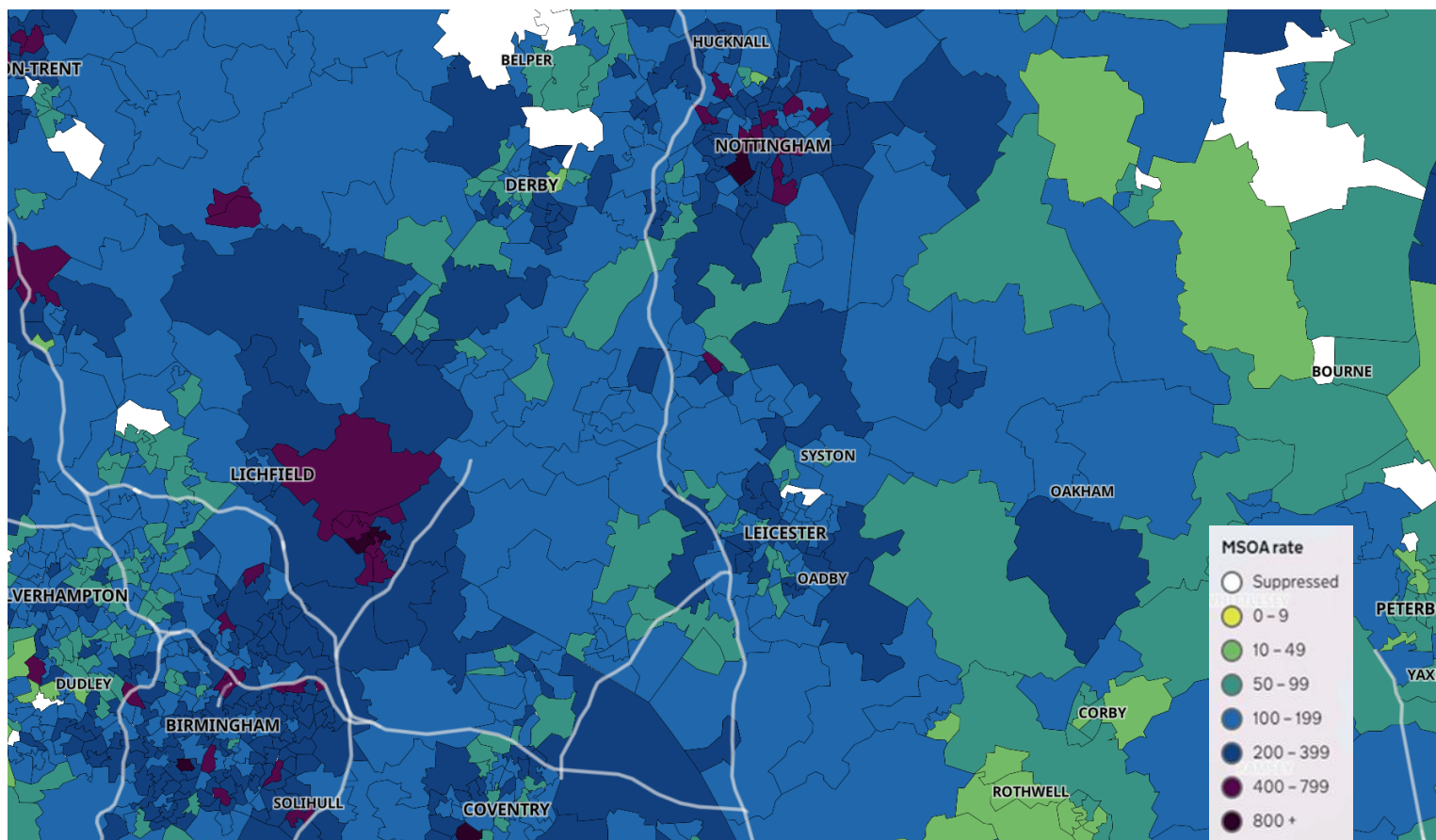
#### 4. Trend in Weekly Incidence Rate (60+) – Leicestershire Districts

- The data for 60+ population show the rate for Leicestershire is 21.4 per 100,000 population, lower than the national rate of 34.7 per 100,000 population. Harborough has the highest rate in the county (30.2 per 100,000 population, 8 cases) followed by Blaby (26.3, 7 cases), O&W (25.6, 4 cases), NWL (22.3, 6 cases), Melton (19.7, 3 cases), Charnwood (18.3, 8 cases) and H&B (12.5, 4 cases). Compared to the previous week, O&W has stayed the same, Blaby has decreased, whilst Charnwood, Harborough, H&B, Melton and NWL have increased like nationally.



Source: PHE Power BI Line Lists

## 5. Weekly Cases by Middle Super Output Area (MSOA)



Source: PHE Coronavirus (COVID-19) in the UK Dashboard

If you require information contained in this leaflet in another version e.g. large print, Braille, tape or alternative language please telephone: 0116 305 6803, Fax: 0116 305 7271 or Minicom: 0116 305 6160.

જો આપ આ માહિતી આપની ભાષામાં સમજવામાં થોડી મદદ ઇચ્છતાં હો તો 0116 305 6803 નંબર પર ફોન કરશો અને અમે આપને મદદ કરવા અવસ્થા કરીશું.

ਜੇਕਰ ਤੁਹਾਨੂੰ ਇਸ ਜਾਣਕਾਰੀ ਨੂੰ ਸਮਝਣ ਵਿਚ ਕੁਝ ਮਦਦ ਚਾਹੀਦੀ ਹੈ ਤਾਂ ਕਿਰਪਾ ਕਰਕੇ 0116 305 6803 ਨੰਬਰ ਤੇ ਫੋਨ ਕਰੋ ਅਤੇ ਅਸੀਂ ਤੁਹਾਡੀ ਮਦਦ ਲਈ ਕਿਸੇ ਦਾ ਪ੍ਰਬੰਧ ਕਰ ਦਵਾਂਗੇ।

এই তথ্য নিজের ভাষায় বুঝার জন্য আপনার যদি কোন সাহায্যের প্রয়োজন হয়, তবে 0116 305 6803 এই নম্বরে ফোন করলে আমরা উপযুক্ত ব্যক্তির ব্যবস্থা করবো।

اگر آپ کو یہ معلومات سمجھنے میں کچھ مدد درکار ہے تو براہ مہربانی اس نمبر پر کال کریں 0116 305 6803 اور ہم آپ کی مدد کے لئے کسی کا انتظام کر دیں گے۔

假如閣下需要幫助，用你的語言去明白這些資訊，請致電 0116 305 6803，我們會安排有關人員為你提供幫助。

Jeżeli potrzebujesz pomocy w zrozumieniu tej informacji w Twoim języku, zadzwoń pod numer 0116 305 6803, a my Ci pomożemy.

**5 July 2021**

Strategic Business Intelligence Team  
Business Intelligence  
Chief Executive's Department  
Leicestershire County Council  
County Hall, Glenfield  
Leicester LE3 8RA

Tel 0116 305 6059  
Email: [Kajal.lad@leics.gov.uk](mailto:Kajal.lad@leics.gov.uk)

Produced by the Strategic Business Intelligence Team at Leicestershire County Council.

Whilst every effort has been made to ensure the accuracy of the information contained within this report, Leicestershire County Council cannot be held responsible for any errors or omission relating to the data contained within the report.