

COVID-19: Data Update for Leicestershire

Period 4 August 2021 to 10 August 2021

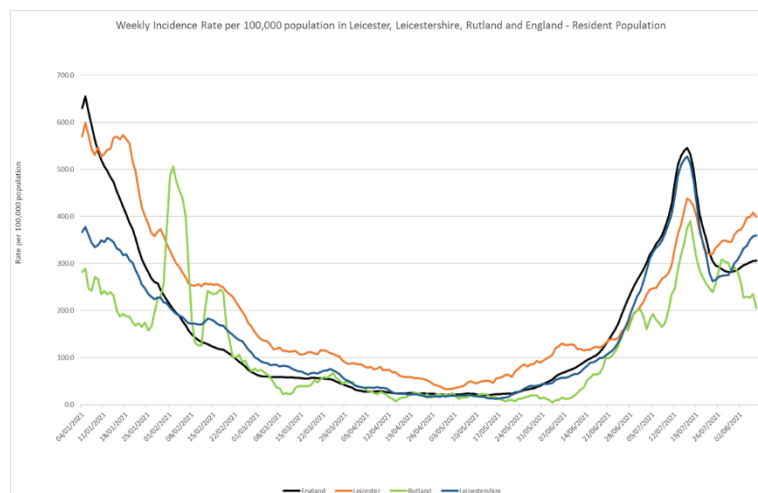
Headline Summary

1. Position Statement from the Director of Public Health for Leicestershire

We have seen a further increase in cases in the last week, with Blaby having the 9th highest rate in the country and Hinckley and Bosworth and Oadby and Wigston bubbling just outside the top 20. The East Midlands has the second highest rate of the regions. This is largely down to a resurgence of cases in the 18-30 population, linked to the full reopening of the night time economy following the lifting of restrictions on July 19th. Although there are some signs that the rate of increase is slowing down in the next few days, it is important we continue to encourage caution and adherence to mask wearing where indicated, etc. Following the lifting of the requirement for close contacts, who have been double jabbed, to self-isolate it is also important to remind people that they are at greater risk of contracting COVID as a close contact – and that they should get a PCR test if pinged and to follow the usual guidance.

2. Trend in Weekly Incidence Rate (All ages) – Leicester, Leicestershire, Rutland and England

- The national rate has increased from 305.2 (period 3rd August to 9th August) to 306.1 per 100,000 population (period 4th August to 10th August). This latest rate reflects a percentage change increase of 8% compared to the previous 7 day period for England.
- The Leicestershire rate has increased from 357.6 (period 3rd August to 9th August) to 359.7 per 100,000 population (period 4th August to 10th August). This latest rate reflects a percentage change increase of 20% compared to the previous 7 day period for Leicestershire. The rate in Leicestershire is higher than the national average.
- The rate for Leicester City stands at 399.4 per 100,000 population and is above the national average. The rate for Rutland stands at 205.1 per 100,000 population and is below the national average.

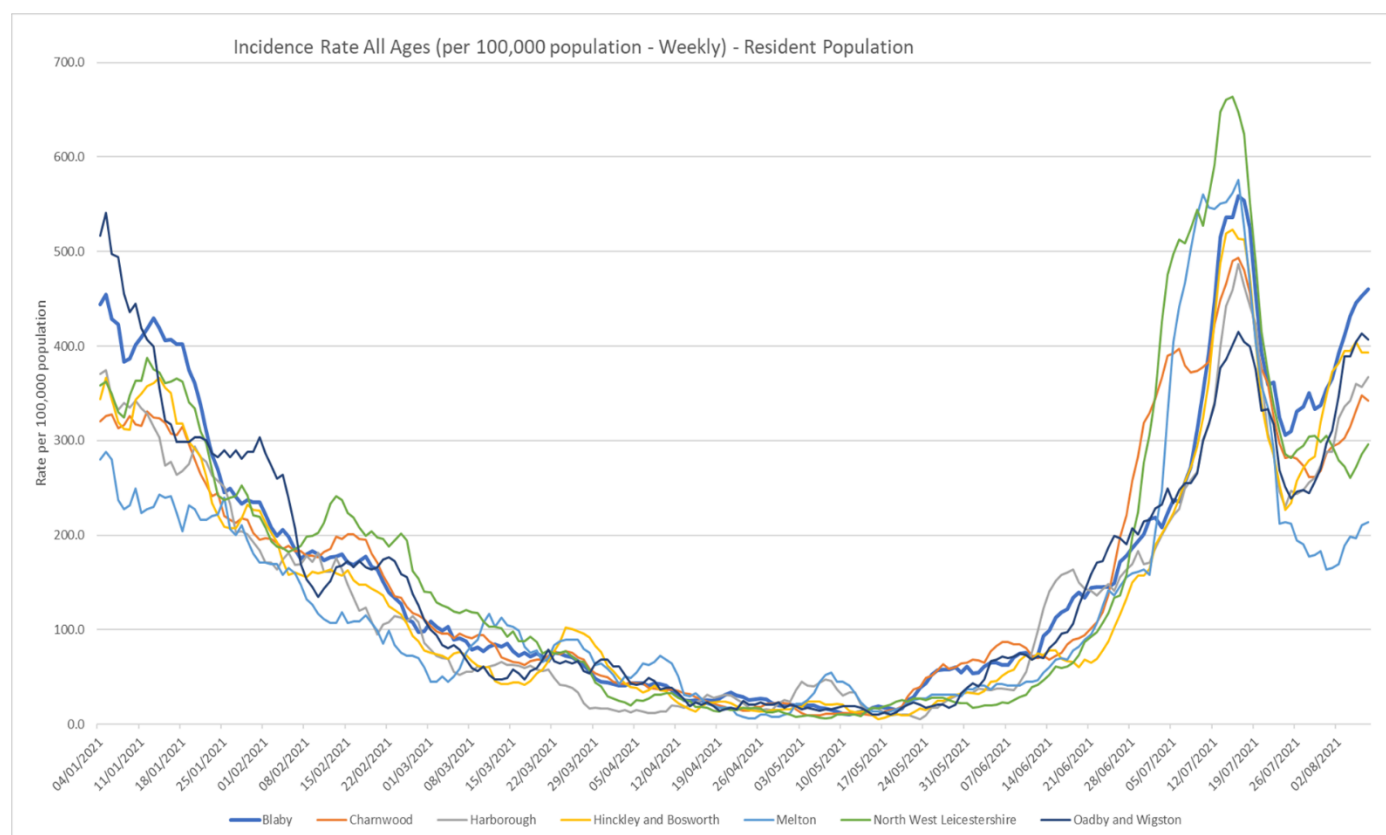


Source: PHE Power BI Line Lists

3. Trend in Weekly Incidence Rate (all ages) – Leicestershire Districts

- Blaby has the highest rate in the county (460.0 per 100,000, 469 cases), followed by O&W (406.5 per 100,000, 233 cases), H&B (393.3 per 100,000, 447 cases), Harborough (367.4 per 100,000, 351 cases), Charnwood (342.3 per 100,000 population, 645 cases), NWL (295.8 per 100,000, 310 cases) and Melton (214.0 per 100,000 population, 110 cases). Compared to the previous week, most districts (apart from NWL) have increased like nationally.

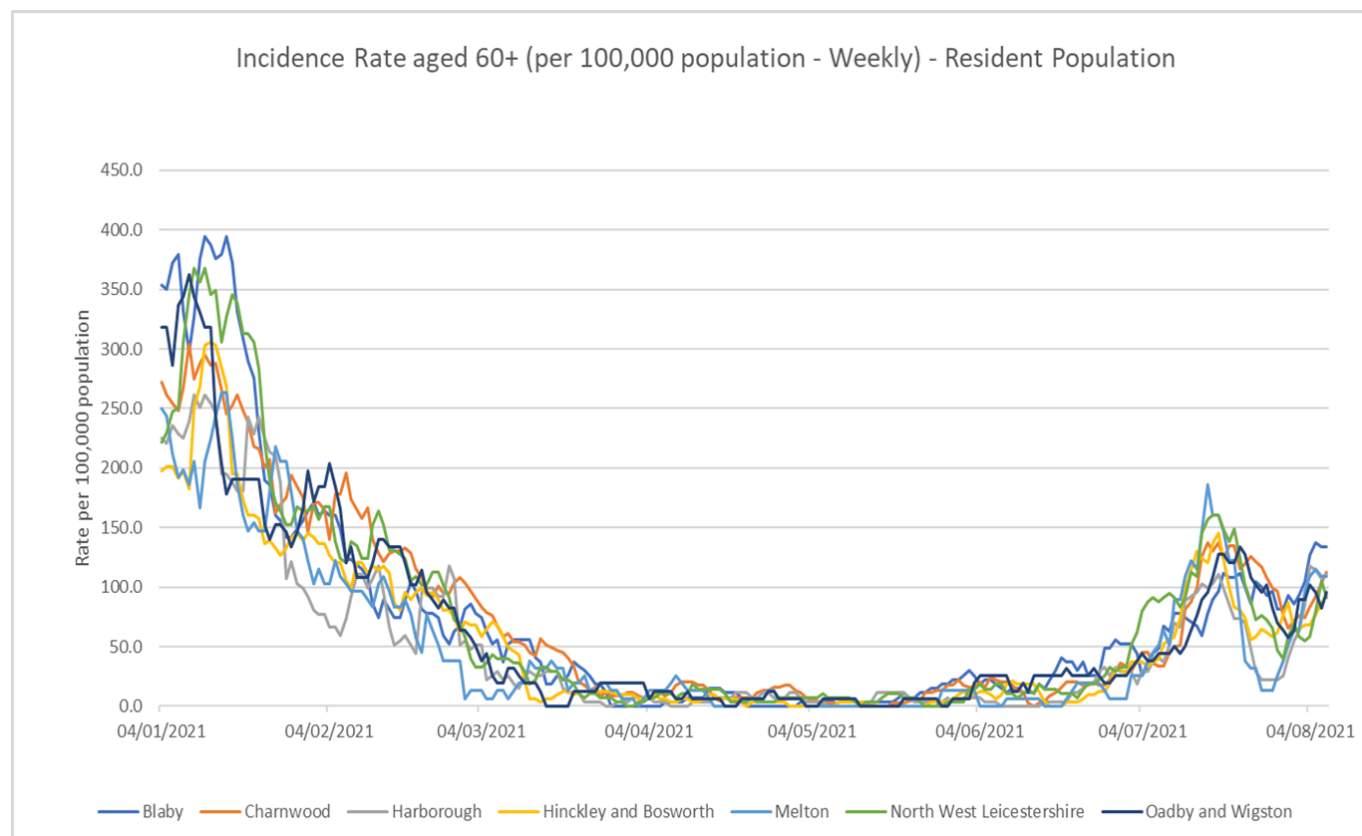
Indicator	Blaby	Charnwood	Harborough	Hinckley & Bosworth	Melton	NW Leicestershire	Oadby and Wigston	Leicestershire	England
Weekly incidence rate per 100,000 population (All Ages)	460.0	342.3	367.4	393.3	214.0	295.8	406.5	359.7	306.1
Weekly count of cases (All Ages)	469	645	351	447	110	310	233	2565	173088
Percentage change in cases from previous 7 days (All Ages)	30%	20%	28%	13%	31%	-3%	37%	20%	8%
Weekly incidence rate per 100,000 population (60+)	134.0	112.6	110.5	92.8	109.1	91.0	95.4	107.1	109.4
Weekly count of cases (60+)	36	50	30	30	17	25	15	203	1526
Percentage individuals testing positive (weekly)	14.8%	11.7%	12.7%	12.6%	8.2%	10.4%	11.9%		8.4%



Source: PHE Power BI Line Lists

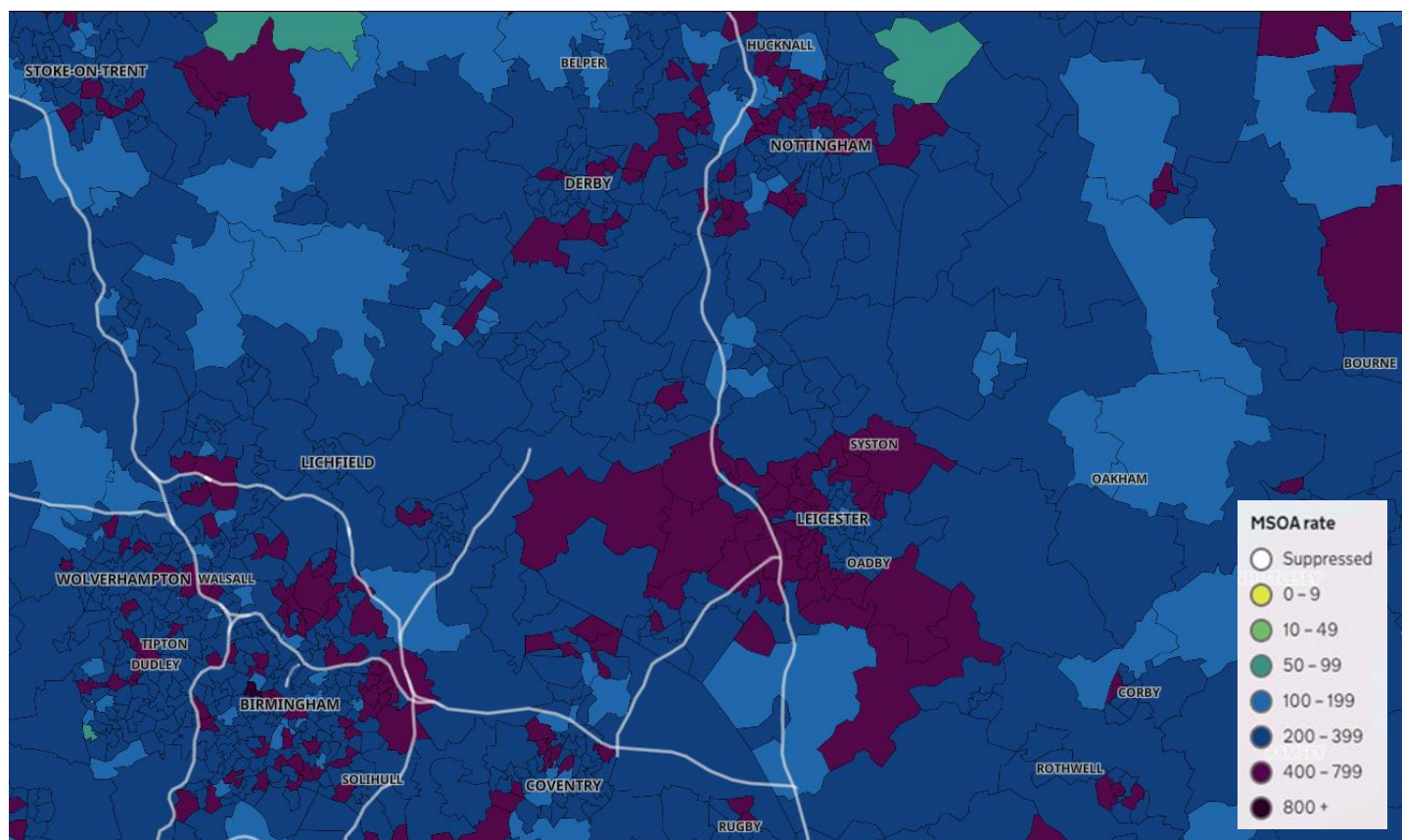
4. Trend in Weekly Incidence Rate (60+) – Leicestershire Districts

- The data for 60+ population show the rate for Leicestershire is 107.1 per 100,000 population, lower than the national rate of 109.4 per 100,000 population. Blaby has the highest rate in the county (134.0 per 100,000 population, 36 cases) followed by Charnwood (112.6, 50 cases), Harborough (110.5, 30 cases), Melton (109.1, 17 cases), O&W (95.4, 15 cases), H&B (92.8, 30 cases) and NWL (91.0, 25 cases). Compared to the previous week, all districts have increased like nationally.



Source: PHE Power BI Line Lists

5. Weekly Cases by Middle Super Output Area (MSOA)



Source: PHE Coronavirus (COVID-19) in the UK Dashboard

If you require information contained in this leaflet in another version e.g. large print, Braille, tape or alternative language please telephone: 0116 305 6803, Fax: 0116 305 7271 or Minicom: 0116 305 6160.

જો આપ આ માહિતી આપની ભાષામાં સમજવામાં થોડી મદદ ઇચ્છતાં હો તો 0116 305 6803 નંબર પર ફોન કરશો અને અમે આપને મદદ કરવા અવસ્થા કરીશું.

ਜੇਕਰ ਤੁਹਾਨੂੰ ਇਸ ਜਾਣਕਾਰੀ ਨੂੰ ਸਮਝਣ ਵਿਚ ਕੁਝ ਮਦਦ ਚਾਹੀਦੀ ਹੈ ਤਾਂ ਕਿਰਪਾ ਕਰਕੇ 0116 305 6803 ਨੰਬਰ ਤੇ ਫੋਨ ਕਰੋ ਅਤੇ ਅਸੀਂ ਤੁਹਾਡੀ ਮਦਦ ਲਈ ਕਿਸੇ ਦਾ ਪ੍ਰਬੰਧ ਕਰ ਦਵਾਂਗੇ।

এই তথ্য নিজের ভাষায় বুঝার জন্য আপনার যদি কোন সাহায্যের প্রয়োজন হয়, তবে 0116 305 6803 এই নম্বরে ফোন করলে আমরা উপযুক্ত ব্যক্তির ব্যবস্থা করবো।

اگر آپ کو یہ معلومات سمجھنے میں کچھ مدد درکار ہے تو براہ مہربانی اس نمبر پر کال کریں 0116 305 6803 اور ہم آپ کی مدد کے لئے کسی کا انتظام کر دیں گے۔

假如閣下需要幫助，用你的語言去明白這些資訊，請致電 0116 305 6803，我們會安排有關人員為你提供幫助。

Jeżeli potrzebujesz pomocy w zrozumieniu tej informacji w Twoim języku, zadzwoń pod numer 0116 305 6803, a my Ci pomożemy.

16 August 2021

Business Intelligence Service
Chief Executive's Department
Leicestershire County Council
County Hall, Glenfield
Leicester LE3 8RA

Tel 0116 305 6059
Email: Kajal.lad@leics.gov.uk

Produced by the Business Intelligence Service at Leicestershire County Council.

Whilst every effort has been made to ensure the accuracy of the information contained within this report, Leicestershire County Council cannot be held responsible for any errors or omission relating to the data contained within the report.