

## COVID-19: Data Update for Leicestershire

Period 21 July 2021 to 27 July 2021

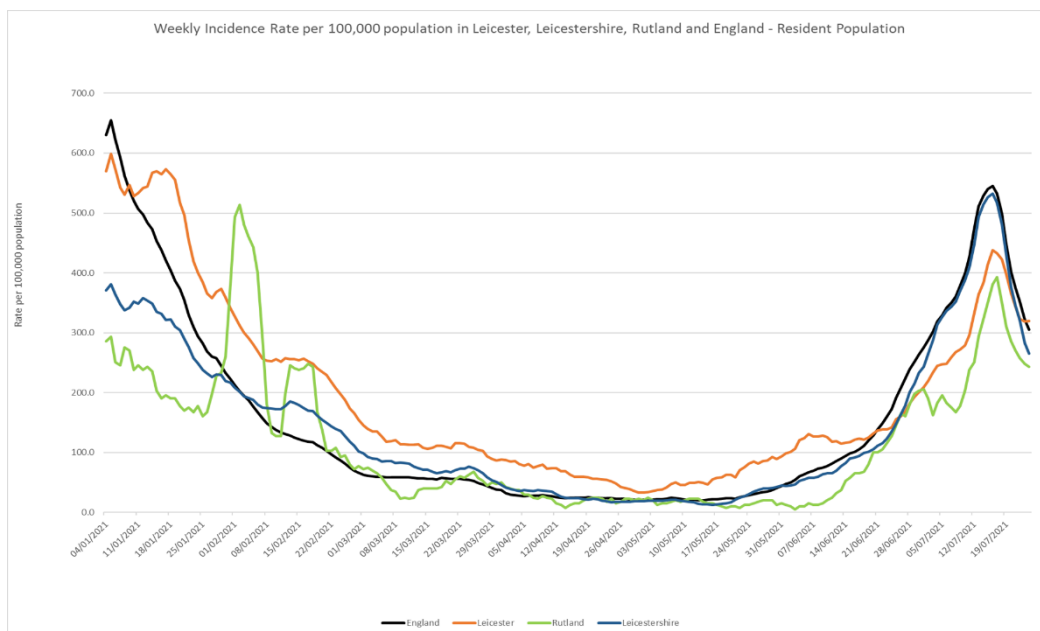
# Headline Summary

### 1. Position Statement from the Director of Public Health for Leicestershire

The end of Euro 2020 has seen the biggest one week fall in rates across Leicestershire since the start of the pandemic, driven partly by a marked decrease in cases in the 0-30s and partly by a drop in testing rates. There are signs in the last few days that this decline has petered out and that the rate will begin to rise again as the effect of the July 19<sup>th</sup> easements kicks in.

### 2. Trend in Weekly Incidence Rate (All ages) – Leicester, Leicestershire, Rutland and England

- The national rate has decreased from 322.6 (period 20<sup>th</sup> July to 26<sup>th</sup> July) to 305.1 per 100,000 population (period 21<sup>st</sup> July to 27<sup>th</sup> July). This latest rate reflects a percentage change decrease of 43% compared to the previous 7 day period for England.
- The Leicestershire rate has decreased from 283.5 (period 20<sup>th</sup> July to 26<sup>th</sup> July) to 265.7 per 100,000 population (period 21<sup>st</sup> July to 27<sup>th</sup> July). This latest rate reflects a percentage change decrease of 49% compared to the previous 7 day period for Leicestershire. The rate in Leicestershire is lower than the national average.
- The rate for Leicester City stands at 320.1 per 100,000 population and is above the national average. The rate for Rutland stands at 242.9 per 100,000 population and is below the national average.

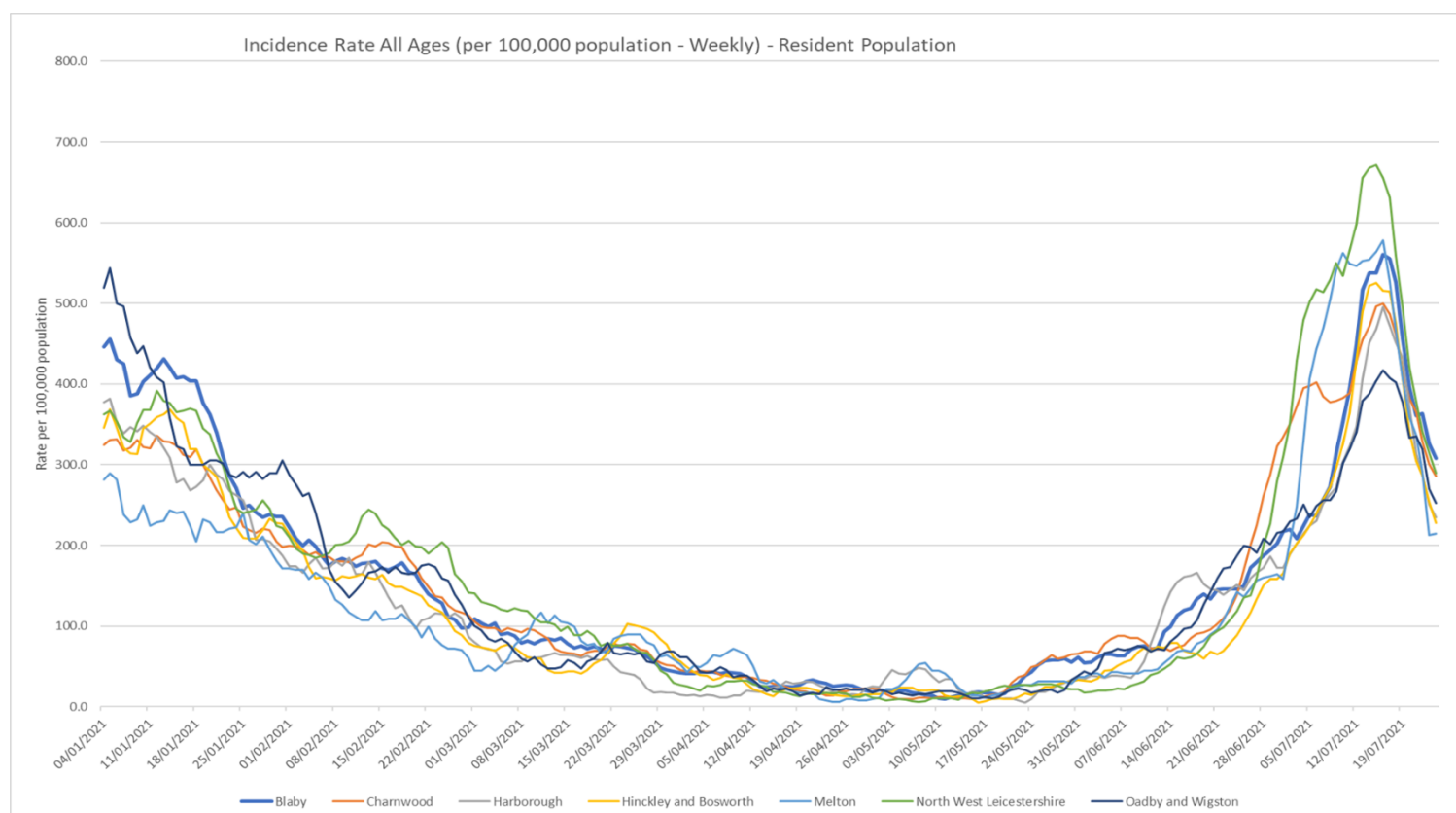


Source: PHE Power BI Line Lists

### 3. Trend in Weekly Incidence Rate (all ages) – Leicestershire Districts

- Blaby has the highest rate in the county (308.3 per 100,000, 313 cases), followed by NWL (289.5 per 100,000, 300 cases), Charnwood (285.7 per 100,000, 531 cases), O&W (252.6 per 100,000, 144 cases), Harborough (234.5 per 100,000, 220 cases), H&B (228.0 per 100,000 population, 258 cases) and Melton (214.8 per 100,000 population, 110 cases). Compared to the previous week, all districts have decreased like nationally.

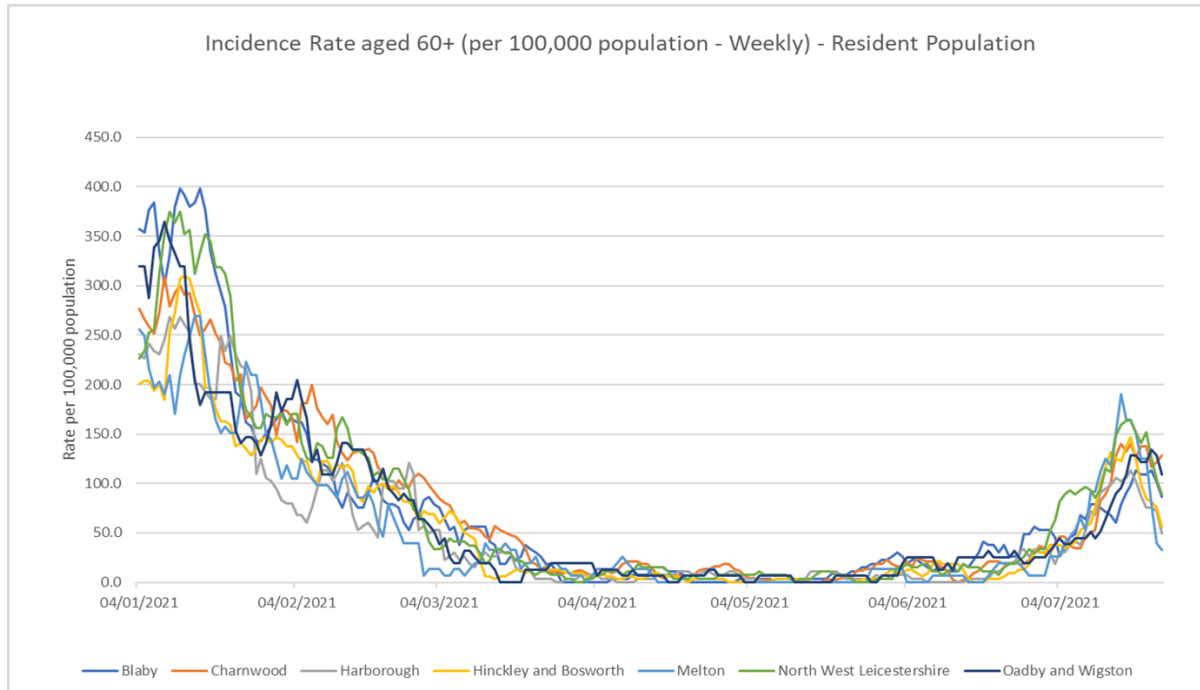
Indicator	Blaby	Charnwood	Harborough	Hinckley & Bosworth	Melton	NW Leicestershire	Oadby and Wigston	Leicestershire	England
Weekly incidence rate per 100,000 population (All Ages)	308.3	285.7	234.5	228.0	214.8	289.5	252.6	265.7	305.1
Weekly count of cases (All Ages)	313	531	220	258	110	300	144	1876	171754
Percentage change in cases from previous 7 days (All Ages)	-45%	-41%	-50%	-56%	-59%	-54%	-38%	-49%	-43%
Weekly incidence rate per 100,000 population (60+)	86.5	128.2	49.1	56.4	32.8	89.0	108.8	83.7	96.6
Weekly count of cases (60+)	23	56	13	18	5	24	17	156	1526
Percentage individuals testing positive (weekly)	11.9%	11.3%	9.5%	8.8%	8.4%	10.3%	8.7%		8.4%



Source: PHE Power BI Line Lists

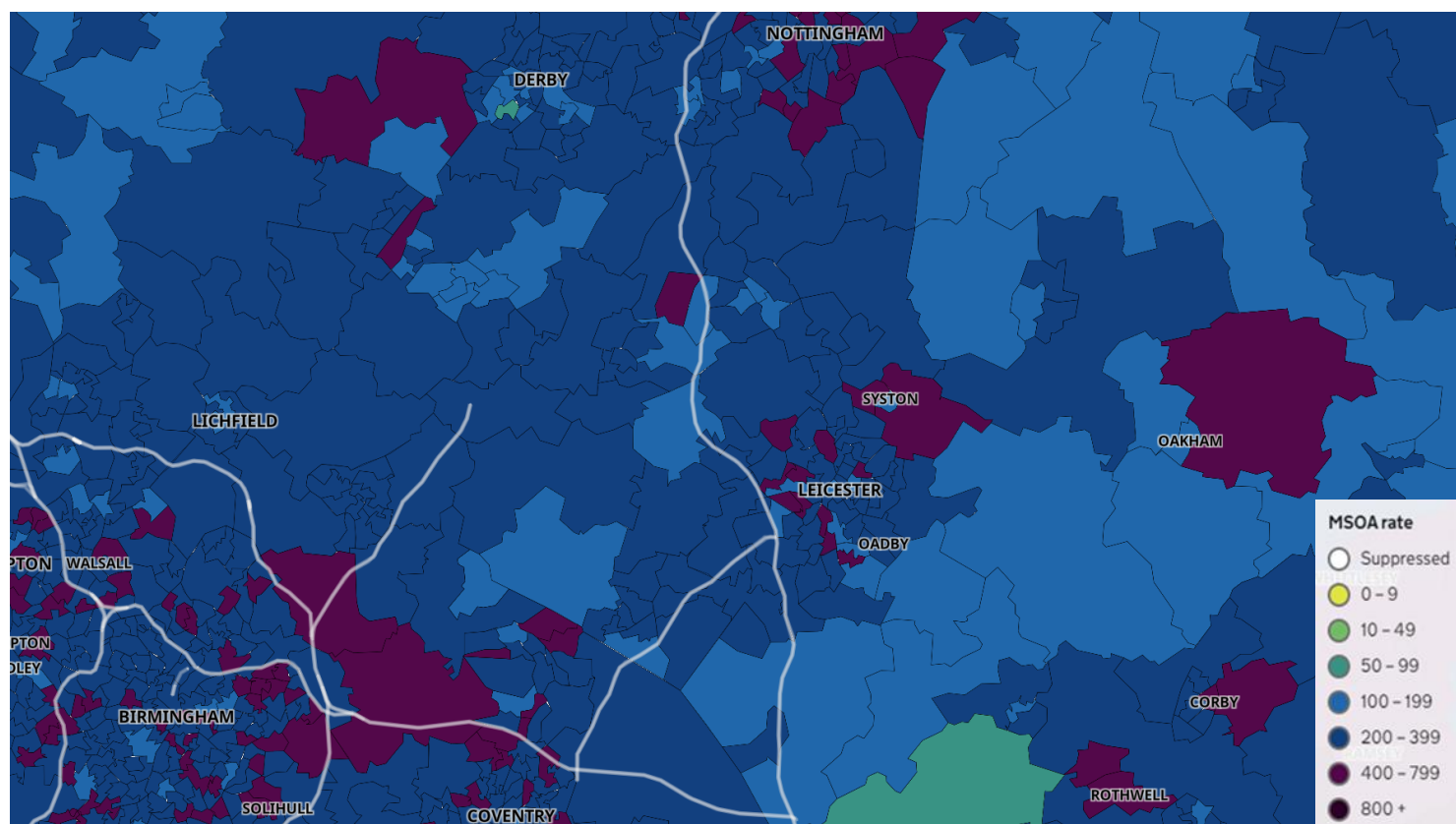
#### 4. Trend in Weekly Incidence Rate (60+) – Leicestershire Districts

- The data for 60+ population show the rate for Leicestershire is 83.7 per 100,000 population, lower than the national rate of 96.6 per 100,000 population. Charnwood has the highest rate in the county (128.2 per 100,000 population, 56 cases) followed by O&W (108.8, 17 cases), NWL (89.0, 24 cases), Blaby (86.5, 23 cases), H&B (56.4, 18 cases), Harborough (49.1, 13 cases) and Melton (32.8, 5 cases). Compared to the previous week, most districts (apart from O&W which stayed the same) have decreased like nationally.



Source: PHE Power BI Line Lists

## 5. Weekly Cases by Middle Super Output Area (MSOA)



Source: PHE Coronavirus (COVID-19) in the UK Dashboard

If you require information contained in this leaflet in another version e.g. large print, Braille, tape or alternative language please telephone: 0116 305 6803, Fax: 0116 305 7271 or Minicom: 0116 305 6160.

જો આપ આ માહિતી આપની ભાષામાં સમજવામાં થોડી મદદ ઇચ્છતાં હો તો 0116 305 6803 નંબર પર ફોન કરશો અને અમે આપને મદદ કરવા અવસ્થા કરીશું.

ਜੇਕਰ ਤੁਹਾਨੂੰ ਇਸ ਜਾਣਕਾਰੀ ਨੂੰ ਸਮਝਣ ਵਿੱਚ ਕੁਝ ਮਦਦ ਚਾਹੀਦੀ ਹੈ ਤਾਂ ਕਿਰਪਾ ਕਰਕੇ 0116 305 6803 ਨੰਬਰ ਤੇ ਫੋਨ ਕਰੋ ਅਤੇ ਅਸੀਂ ਤੁਹਾਡੀ ਮਦਦ ਲਈ ਕਿਸੇ ਦਾ ਪ੍ਰਬੰਧ ਕਰ ਦਵਾਂਗੇ।

এই তথ্য নিজের ভাষায় বুঝার জন্য আপনার যদি কোন সাহায্যের প্রয়োজন হয়, তবে 0116 305 6803 এই নম্বরে ফোন করলে আমরা উপযুক্ত ব্যক্তির ব্যবস্থা করবো।

اگر آپ کو یہ معلومات سمجھنے میں کچھ مدد درکار ہے تو براہ مہربانی اس نمبر پر کال کریں 0116 305 6803 اور ہم آپ کی مدد کے لئے کسی کا انتظام کر دیں گے۔

假如閣下需要幫助，用你的語言去明白這些資訊，請致電 0116 305 6803，我們會安排有關人員為你提供幫助。

Jeżeli potrzebujesz pomocy w zrozumieniu tej informacji w Twoim języku, zadzwoń pod numer 0116 305 6803, a my Ci pomożemy.

## 2 August 2021

Business Intelligence Service  
Chief Executive's Department  
Leicestershire County Council  
County Hall, Glenfield  
Leicester LE3 8RA

Tel 0116 305 6059  
Email: [Kajal.lad@leics.gov.uk](mailto:Kajal.lad@leics.gov.uk)

Produced by the Business Intelligence Service at Leicestershire County Council.

Whilst every effort has been made to ensure the accuracy of the information contained within this report, Leicestershire County Council cannot be held responsible for any errors or omission relating to the data contained within the report.