

COVID-19: Data Update for Leicestershire

Period 11 August 2021 to 17 August 2021

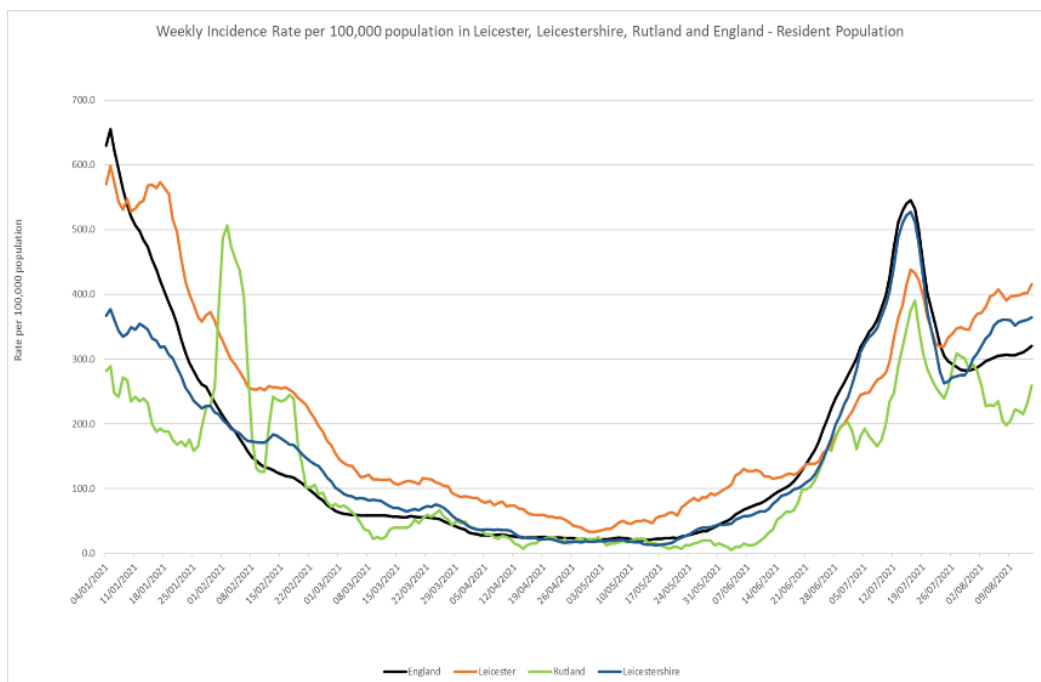
Headline Summary

1. Position Statement from the Director of Public Health for Leicestershire

Rates have remained fairly stable over the last week, however an increase in rates has been witnessed in the 10-19 age group and this could potentially have an impact in the coming days with large numbers returning to school and further spread through other age ranges.

2. Trend in Weekly Incidence Rate (All ages) – Leicester, Leicestershire, Rutland and England

- The national rate has increased from 314.7 (period 10th August to 16th August) to 320.5 per 100,000 population (period 11th August to 17th August). This latest rate reflects a percentage change increase of 5% compared to the previous 7 day period for England.
- The Leicestershire rate has increased from 361.1 (period 10th August to 16th August) to 364.6 per 100,000 population (period 11th August to 17th August). This latest rate reflects a percentage change increase of 1% compared to the previous 7 day period for Leicestershire. The rate in Leicestershire is higher than the national average.
- The rate for Leicester City stands at 416.1 per 100,000 population and is above the national average. The rate for Rutland stands at 259.4 per 100,000 population and is below the national average.

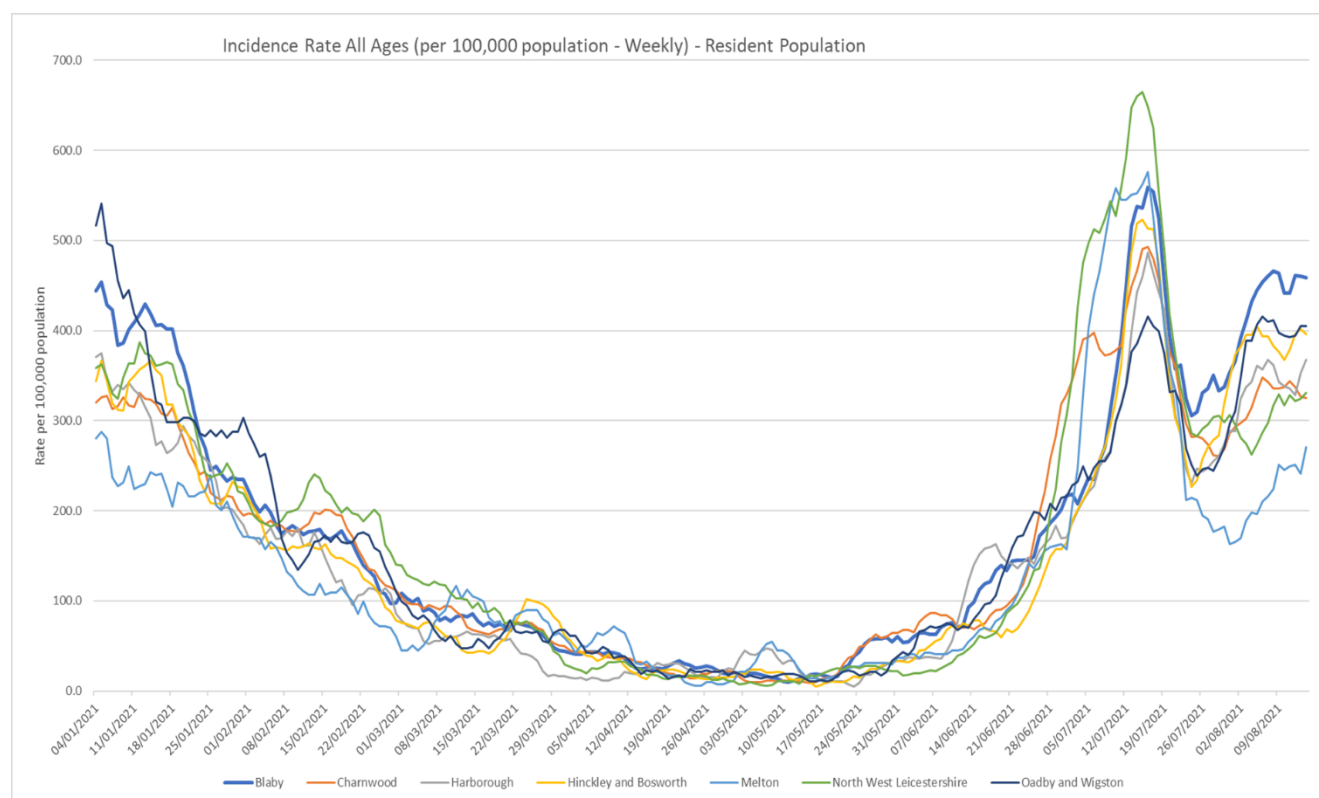


Source: PHE Power BI Line Lists

3. Trend in Weekly Incidence Rate (all ages) – Leicestershire Districts

- Blaby has the highest rate in the county (459.0 per 100,000, 468 cases), followed by O&W (404.8 per 100,000, 232 cases), H&B (395.9 per 100,000, 450 cases), Harborough (367.4 per 100,000, 351 cases), NWL (331.1 per 100,000 population, 347 cases), Charnwood (325.3 per 100,000, 613 cases) and Melton (270.5 per 100,000 population, 139 cases). Compared to the previous week, H&B, Melton and NWL have increased, Harborough has stayed the same, whilst Blaby, Charnwood and O&W have decreased.

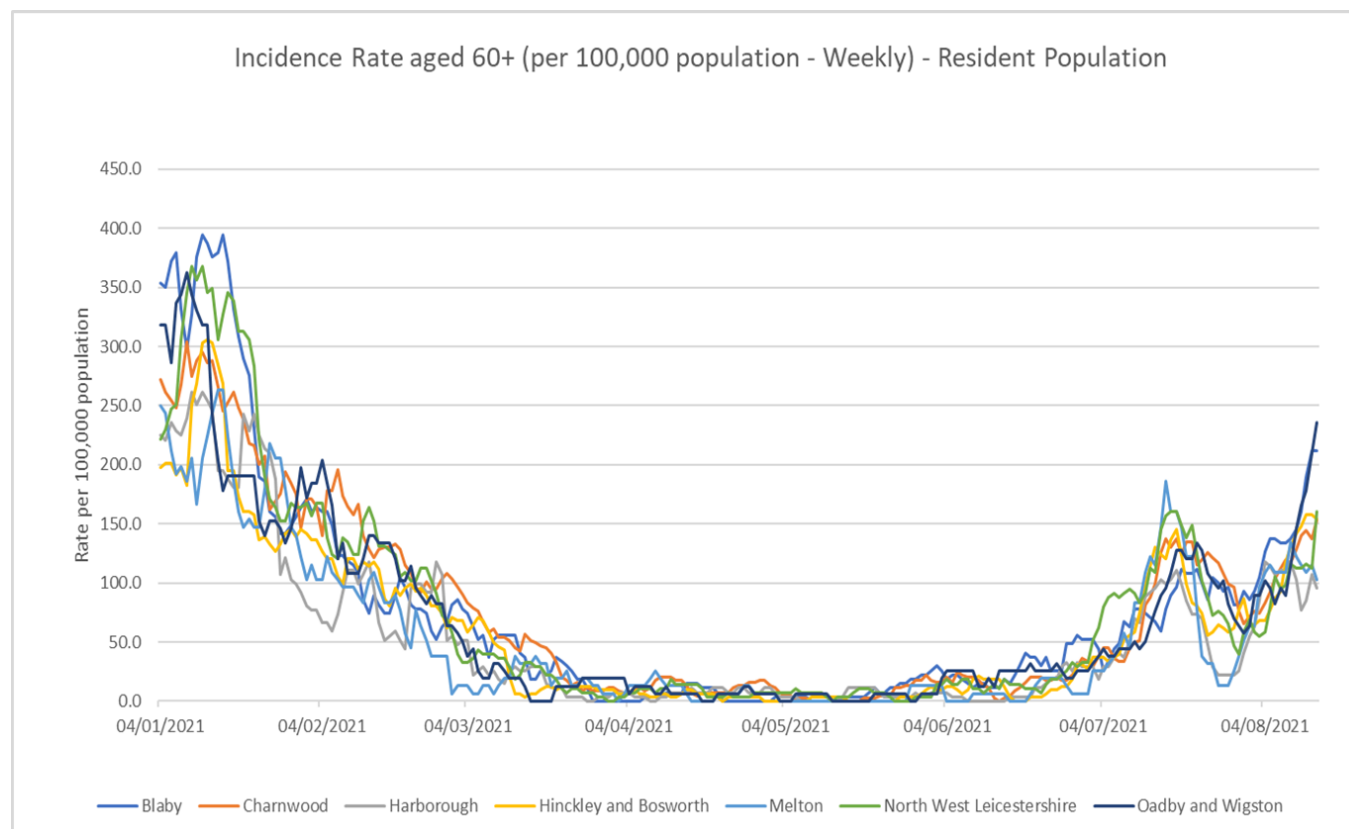
Indicator	Blaby	Charnwood	Harborough	Hinckley & Bosworth	Melton	NW Leicestershire	Oadby and Wigston	Leicestershire	England
Weekly incidence rate per 100,000 population (All Ages)	459.0	325.3	367.4	395.9	270.5	331.1	404.8	364.6	320.5
Weekly count of cases (All Ages)	468	613	351	450	139	347	232	2600	181230
Percentage change in cases from previous 7 days (All Ages)	0%	-5%	0%	1%	25%	11%	-1%	1%	5%
Weekly incidence rate per 100,000 population (60+)	212.1	153.1	95.8	154.6	102.6	160.1	235.4	157.2	134.4
Weekly count of cases (60+)	57	68	26	50	16	44	37	298	1526
Percentage individuals testing positive (weekly)	15.0%	11.0%	12.0%	12.9%	10.6%	10.4%	11.9%		8.6%



Source: PHE Power BI Line Lists

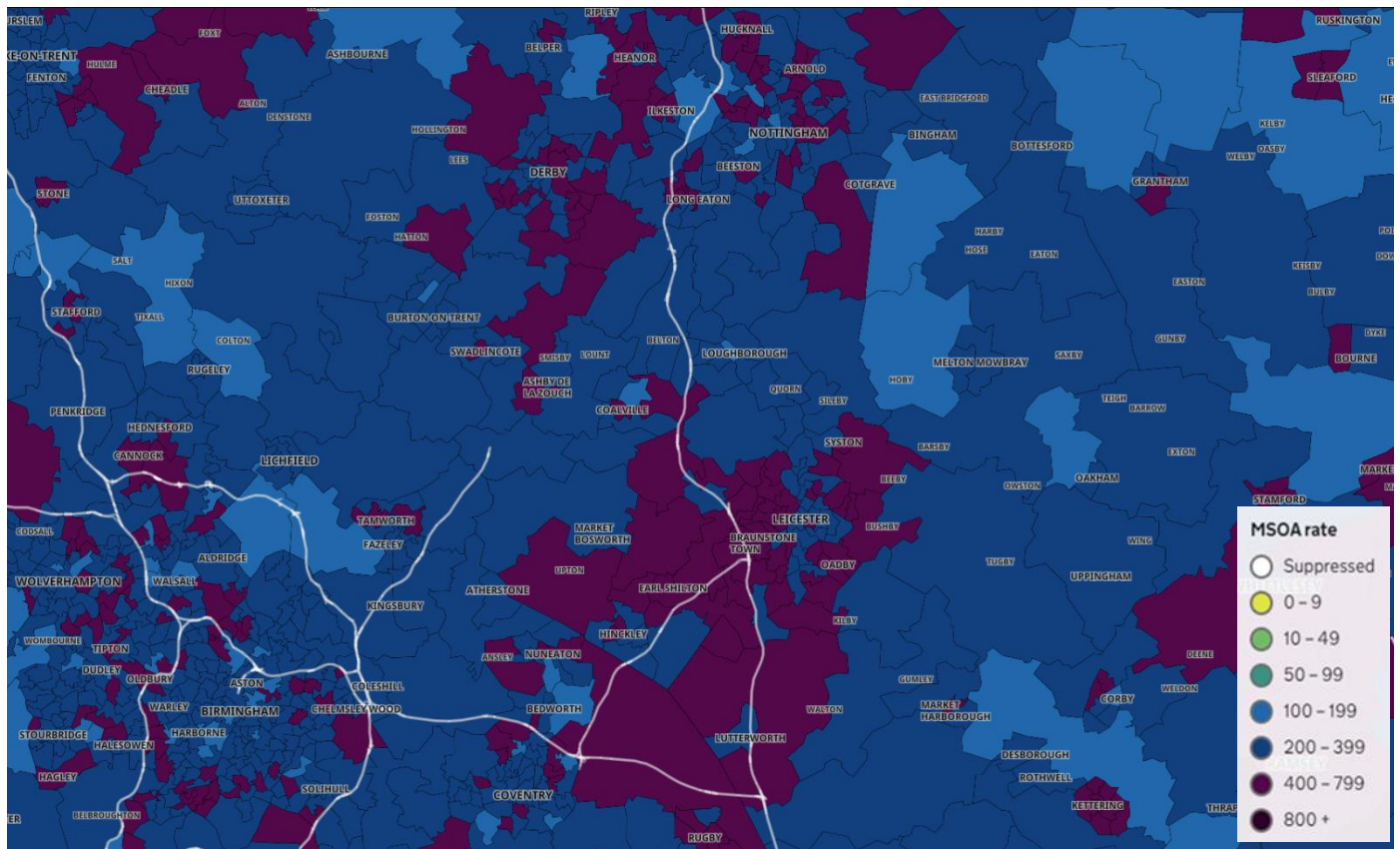
4. Trend in Weekly Incidence Rate (60+) – Leicestershire Districts

- The data for 60+ population show the rate for Leicestershire is 157.2 per 100,000 population, higher than the national rate of 134.4 per 100,000 population. O&W has the highest rate in the county (235.4 per 100,000 population, 37 cases) followed by Blaby (212.1, 57 cases), NWL (160.1, 44 cases), H&B (154.6, 50 cases), Charnwood (153.1, 68 cases), Melton (102.6, 16 cases) and Harborough (95.8, 26 cases). Compared to the previous week, most districts (apart from Harborough and Melton) have increased like nationally.



Source: PHE Power BI Line Lists

5. Weekly Cases by Middle Super Output Area (MSOA)



Source: PHE Coronavirus (COVID-19) in the UK Dashboard

If you require information contained in this leaflet in another version e.g. large print, Braille, tape or alternative language please telephone: 0116 305 6803, Fax: 0116 305 7271 or Minicom: 0116 305 6160.

જો આપ આ માહિતી આપની ભાષામાં સમજવામાં થોડી મદદ ઇચ્છતાં હો તો 0116 305 6803 નંબર પર ફોન કરશો અને અમે આપને મદદ કરવા અવસ્થા કરીશું.

ਜੇਕਰ ਤੁਹਾਨੂੰ ਇਸ ਜਾਣਕਾਰੀ ਨੂੰ ਸਮਝਣ ਵਿਚ ਕੁਝ ਮਦਦ ਚਾਹੀਦੀ ਹੈ ਤਾਂ ਕਿਰਪਾ ਕਰਕੇ 0116 305 6803 ਨੰਬਰ ਤੇ ਫੋਨ ਕਰੋ ਅਤੇ ਅਸੀਂ ਤੁਹਾਡੀ ਮਦਦ ਲਈ ਕਿਸੇ ਦਾ ਪ੍ਰਬੰਧ ਕਰ ਦਵਾਂਗੇ।

এই তথ্য নিজের ভাষায় বুঝার জন্য আপনার যদি কোন সাহায্যের প্রয়োজন হয়, তবে 0116 305 6803 এই নম্বরে ফোন করলে আমরা উপযুক্ত ব্যক্তির ব্যবস্থা করবো।

اگر آپ کو یہ معلومات سمجھنے میں کچھ مدد درکار ہے تو براہ مہربانی اس نمبر پر کال کریں 0116 305 6803 اور ہم آپ کی مدد کے لئے کسی کا انتظام کر دیں گے۔

假如閣下需要幫助，用你的語言去明白這些資訊，請致電 0116 305 6803，我們會安排有關人員為你提供幫助。

Jeżeli potrzebujesz pomocy w zrozumieniu tej informacji w Twoim języku, zadzwoń pod numer 0116 305 6803, a my Ci pomożemy.

23 August 2021

Business Intelligence Service
Chief Executive's Department
Leicestershire County Council
County Hall, Glenfield
Leicester LE3 8RA

Tel 0116 305 6059
Email: Kajal.lad@leics.gov.uk

Produced by the Business Intelligence Service at Leicestershire County Council.

Whilst every effort has been made to ensure the accuracy of the information contained within this report, Leicestershire County Council cannot be held responsible for any errors or omission relating to the data contained within the report.