

COVID-19:

Data Update for Leicestershire

Week 33 of 2021

31st August 2021

Business Intelligence Service
Chief Executive's Department
Leicestershire County Council
County Hall, Glenfield
Leicester LE3 8RA

Tel 0116 305 6059
Email: kajal.lad@leics.gov.uk

Produced by the Business Intelligence Service at Leicestershire County Council.

Whilst every effort has been made to ensure the accuracy of the information contained within this report, Leicestershire County Council cannot be held responsible for any errors or omission relating to the data contained within the report.

What have we learnt from the newly released Covid-19 data?

A series of publicly available dashboards examining Covid-19 cases, deaths involving Covid-19 and a district summary are available at the below links. A summary narrative to support the data in these dashboards then follows.

- [Deaths involving Covid-19](#)
- [Covid-19 Summary at District Level](#)
- [PHE Weekly Covid-19 Cases](#)

1. Seven deaths¹ involving Covid-19 were recorded in Leicestershire in the last week

- As of week 33 2021 (up to 20th August), there has been a total of 1,589 deaths in Leicestershire. The weekly count of deaths has increased from four deaths in week 32 of 2021 to seven deaths in week 33 of 2021.
- Of all deaths involving Covid-19 in Leicestershire, 1,062 (66.8%) were in hospital and 403 (25.4%) were in a care home.
- In week 33 in Leicestershire, there were five deaths in a hospital and two deaths in a care home.

¹ Death counts are based on death occurrences. The death is counted as involving Covid-19 if Covid-19 was mentioned on the death certificate. Please note, Covid-19 may not have been confirmed by a test. Source: [Office for National Statistics](#) (2021)

Deaths (numbers) by local authority and place of death, for deaths that occurred up to 20th August but were registered up to 28th August.

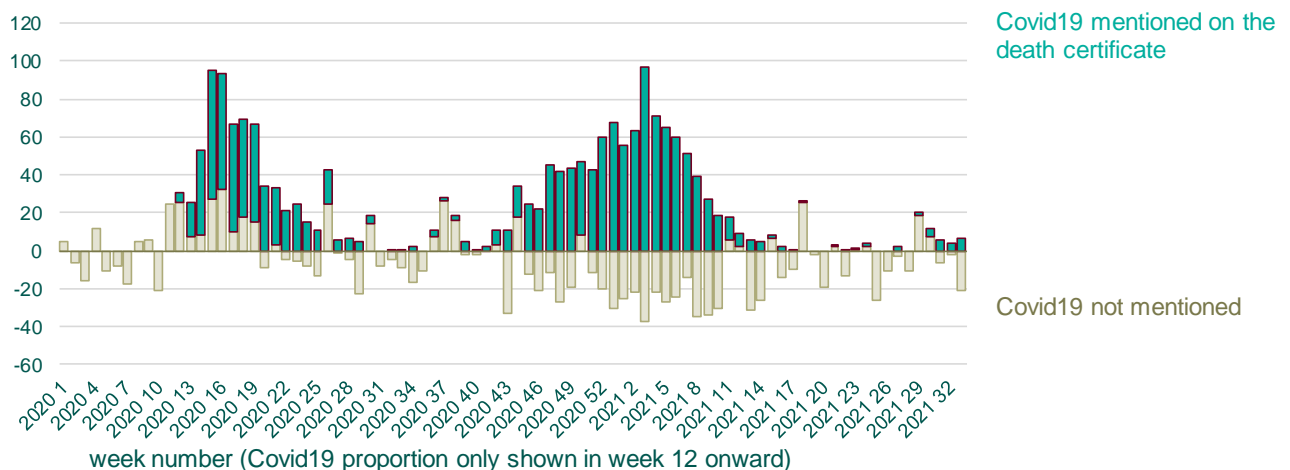
	Care Home		Elsewhere		Home		Hospice		Hospital		Total				Population
	Count	Rate	Count	Rate	Count	Rate	Count	Rate	Count	Rate	Count	Rate	LCI	UCI	
Blaby	47	46.1	7	6.9	13	12.8	1	1.0	169	165.8	237	232.5	203.8	264.0	101,950
Charnwood	98	52.0	8	4.2	18	9.6	6	3.2	245	130.0	375	199.0	179.4	220.2	188,416
Harborough	55	57.6	1	1.0	11	11.5	2	2.1	110	115.1	179	187.4	160.9	216.9	95,537
H&B	64	56.3	0	0.0	12	10.6	5	4.4	167	146.9	248	218.2	191.9	247.1	113,666
Melton	44	85.6	1	1.9	7	13.6	1	1.9	66	128.4	119	231.5	191.8	277.1	51,394
NWLeics	49	46.8	2	1.9	15	14.3	6	5.7	173	165.1	245	233.8	205.4	264.9	104,809
O&W	46	80.3	2	3.5	6	10.5	0	0.0	132	230.3	186	324.5	279.6	374.7	57,313
Leicestershire	403	56.5	21	2.9	82	11.5	21	2.9	1062	148.9	1589	222.8	212.0	234.1	713085
Rutland	32	79.1	0	0.0	6	14.8	2	4.9	36	88.9	76	187.8	147.9	235.0	40476
Leicester City	145	41.0	26	7.3	71	20.1	2	0.6	656	185.3	900	254.2	237.9	271.4	354036
LLR	580	52.4	47	4.2	159	14.4	25	2.3	1754	158.4	2565	231.6	222.7	240.7	1107597

2. There were no excess deaths recorded in Leicestershire in the last week

- Counts of excess deaths in Leicestershire have fluctuated over the last 10 weeks. The number of all deaths seen has decreased from week 32 2021 to week 33 2021. The latest figures from ONS show that 94 deaths occurred in Leicestershire in week 33 of 2021. There were no excess deaths reported in the last week.
- The latest weeks data shows that there were seven deaths that mentioned Covid-19 on the death certificate in week 33.

Weekly provisional figures on deaths occurring, minus the weekly average (2015 to 2019) plus death counts where coronavirus (COVID-19) was mentioned on the death certificate

Leicestershire



Covid-19 - Weekly occurrences

Based on a chart by David Spiegelhalter

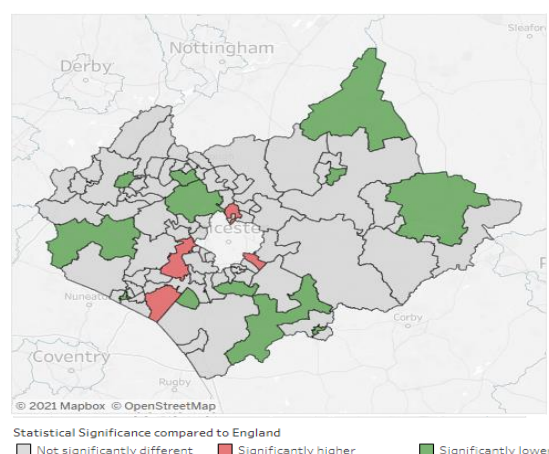
<https://www.ons.gov.uk/peoplepopulationandcommunity/birthsdeathsandmarriages/deaths/datasets/weeklyprovisionalfiguresondeathsregisteredinenglandandwales>

3. Two areas in Blaby, one area in Charnwood and one area in Oadby and Wigston has a significantly higher percentage of deaths involving Covid-19 than the national percentage

Note: There is no further update available for this data.

- The map below examines the statistical significance compared to England, of the percentage of deaths involving Covid-19 by Middle Layer Super Output Area (MSOA) in Leicestershire and Rutland. These deaths occurred between 1st March 2020 and 30th April 2021.
- Stoney Stanton, Sapcote & Sharnton in Blaby recorded 33 deaths involving Covid-19 in this time period, this represented 27.3% of all deaths. Kirby Muxloe and Thurlaston in Blaby recorded 31 deaths involving Covid-19 in this time period, this represented 26.7% of all deaths. Birstall Wanlip & Riverside in Charnwood recorded 30 deaths involving Covid-19 in this time period, this represented 24.6% of all deaths. Oadby North & East in Oadby and Wigston recorded 38 deaths involving Covid-19 which represented 23.6% of all deaths.
- Nationally, deaths involving Covid-19 made up under a fifth (17.1%) of all deaths.
- 12 MSOAs in Leicestershire and Rutland have a significantly lower percentage of deaths involving Covid-19 compared to England. These are:
 - Market Bosworth, Barlestone & Sheepy Magna in Hinckley and Bosworth (11, 10.0%)
 - Bottesford, Harby & Croxton Kerrial in Melton (12, 9.9%)
 - Loughborough – Outwoods in Charnwood (10, 9.6%)
 - Market Harborough Central in Harborough (10, 8.7%)
 - Broughton Astley in Harborough (8, 8.6%)
 - Thurgate, Woodhouse & Bradgate in Charnwood (8, 8.3%)
 - Market Overton, Cottesmore & Empingham in Rutland (6, 8.3%)
 - Countesthorpe & Kilby in Blaby (6, 8.3%)
 - Thringstone & Swannington in North West Leicestershire (7, 7.8%)
 - Hinckley Clarendon Park in Hinckley and Bosworth (5, 7.7%)
 - Melton Mowbray South in Melton (7, 7.2%)
 - Fleckney, Kilworth & Foxton in Harborough (7, 5.7%)
- Further data examining deaths involving Covid-19 by local area is available in the dashboard available at [this link](#).

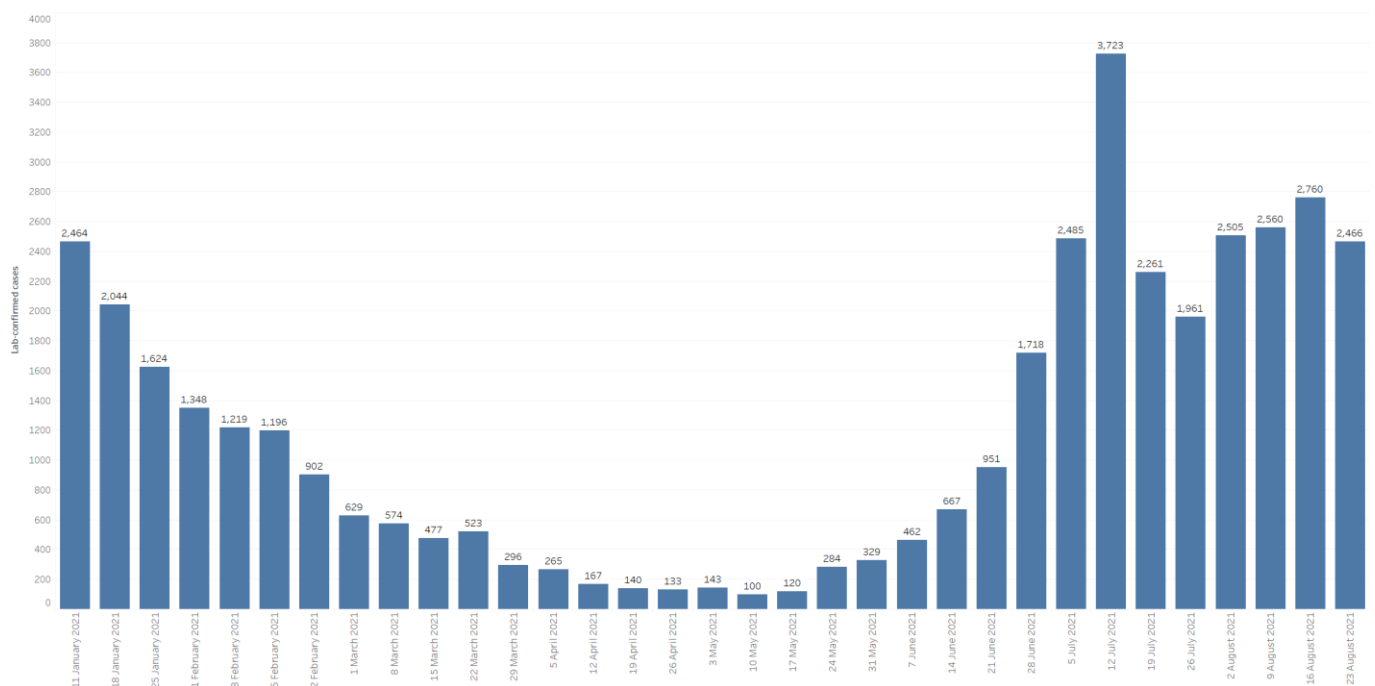
Statistical Significance compared to England of the deaths involving Covid-19 by Middle Layer Super Output Area, Leicestershire and Rutland, deaths occurring between 1st March 2020 and 30th April 2021.



4. Weekly counts of cases have decreased in the past week in Leicestershire

Note: Public Health England has updated the way cases are reported in England. Reported cases are sometimes removed if subsequent tests are negative. This happens when cases identified through a positive rapid lateral flow test are followed by polymerase chain reaction (PCR) tests within 3 days that are all negative. This means cases may be retroactively removed or changed and as such the data may fluctuate.

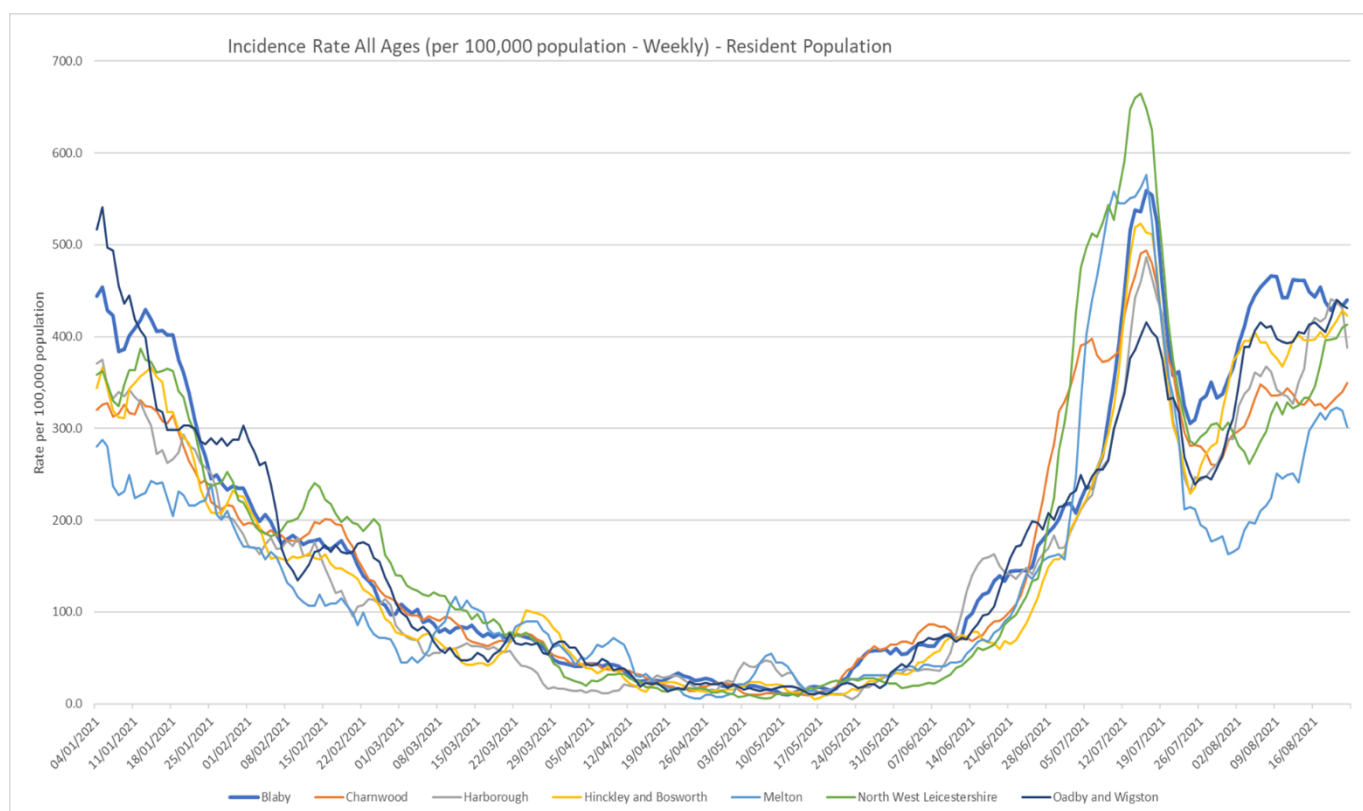
- As of 29th August, Leicestershire has recorded a total of 70,149 lab-confirmed cases of Covid-19. This data relates to pillar 1 and 2 cases.
- From January 11th to the beginning of May, cases had been decreasing. From then to mid July the cases increased, but since then have fluctuated.
- The latest weekly data shows 2,466 cases have been confirmed in Leicestershire in the last week. This count has decreased compared to the previous week where 2,760 cases were confirmed.



5. Blaby has the highest weekly incidence rate of Covid-19 cases for people of all ages in the county

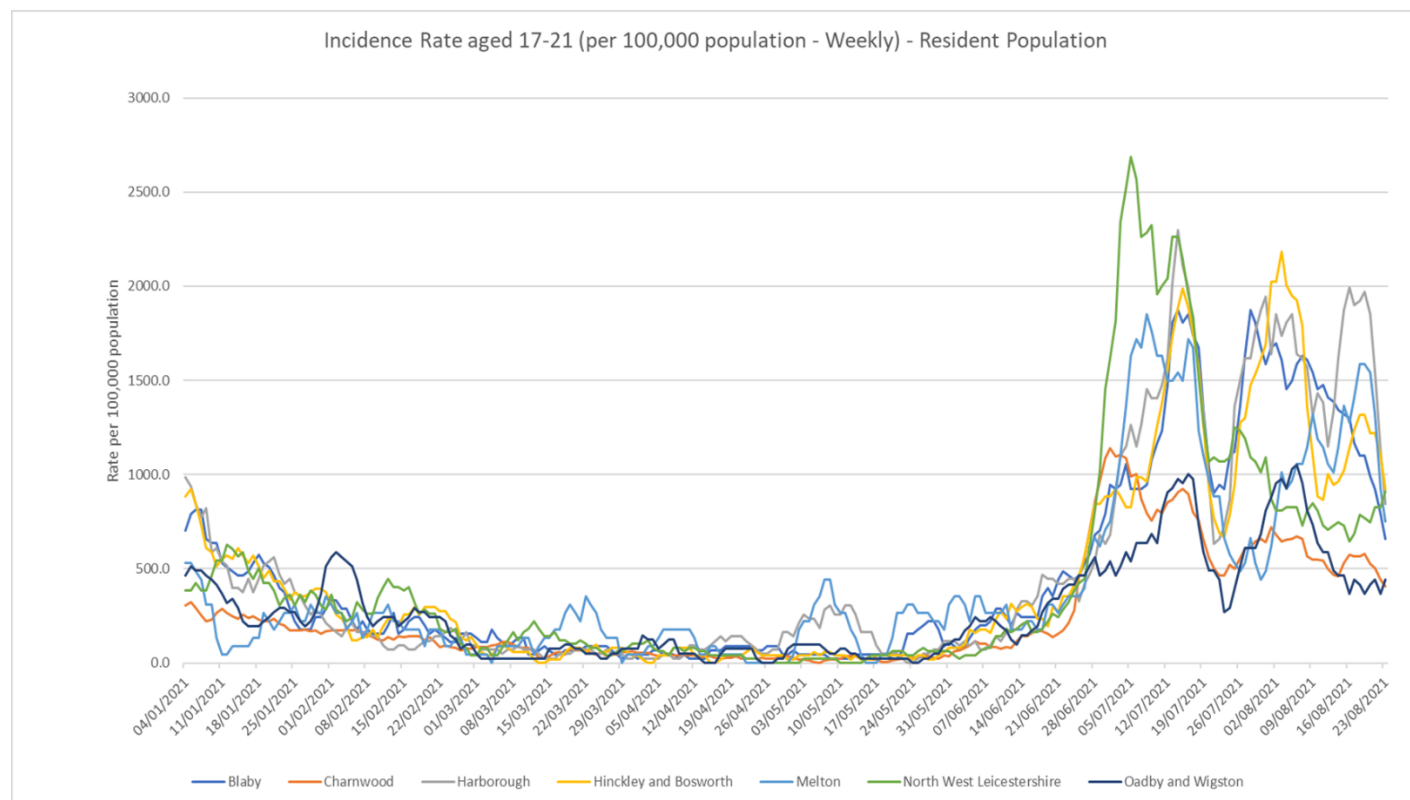
Note: Public Health England has updated the way cases are reported in England. Reported cases are sometimes removed if subsequent tests are negative. This happens when cases identified through a positive rapid lateral flow test are followed by polymerase chain reaction (PCR) tests within 3 days that are all negative. This means cases may be retroactively removed or changed and as such the data may fluctuate.

- The incidence rate for Covid-19 cases in Leicestershire had shown a declining trend between the beginning of January and the final week of April. The incidence rate in Leicestershire then fluctuated between the final week of April and the middle of May. Since then the incidence rate has shown an increasing trend, with the exception of the period between the 16th and 25th of July where the incidence rate decreased. The incidence rate in Leicestershire (391.8 per 100,000 population) is higher than the national rate (319.9 per 100,000 population) as of 22nd August 2021.
- The latest weekly incidence rates of Covid-19 cases for people of all ages (as of 22nd August) show that the following area rates in Leicestershire are higher than the national rate (319.9 per 100,000 population):
 - Blaby; 440.4 per 100,000 (449 cases)
 - Oadby & Wigston; 431.0 per 100,000 (247 cases)
 - Hinckley & Bosworth; 423.2 per 100,000 (481 cases)
 - North West Leicestershire; 413.1 per 100,000 (433 cases)
 - Harborough; 388.3 per 100,000 (371 cases)
 - Charnwood; 349.2 per 100,000 (658 cases)
- The following area rates in Leicestershire are lower than the national rate (319.9 per 100,000 population):
 - Melton; 301.6 per 100,000 (155 cases)
- Rutland has a lower incidence rate of Covid-19 cases (318.7 per 100,000) than England for people of all ages. This equates to 129 cases.



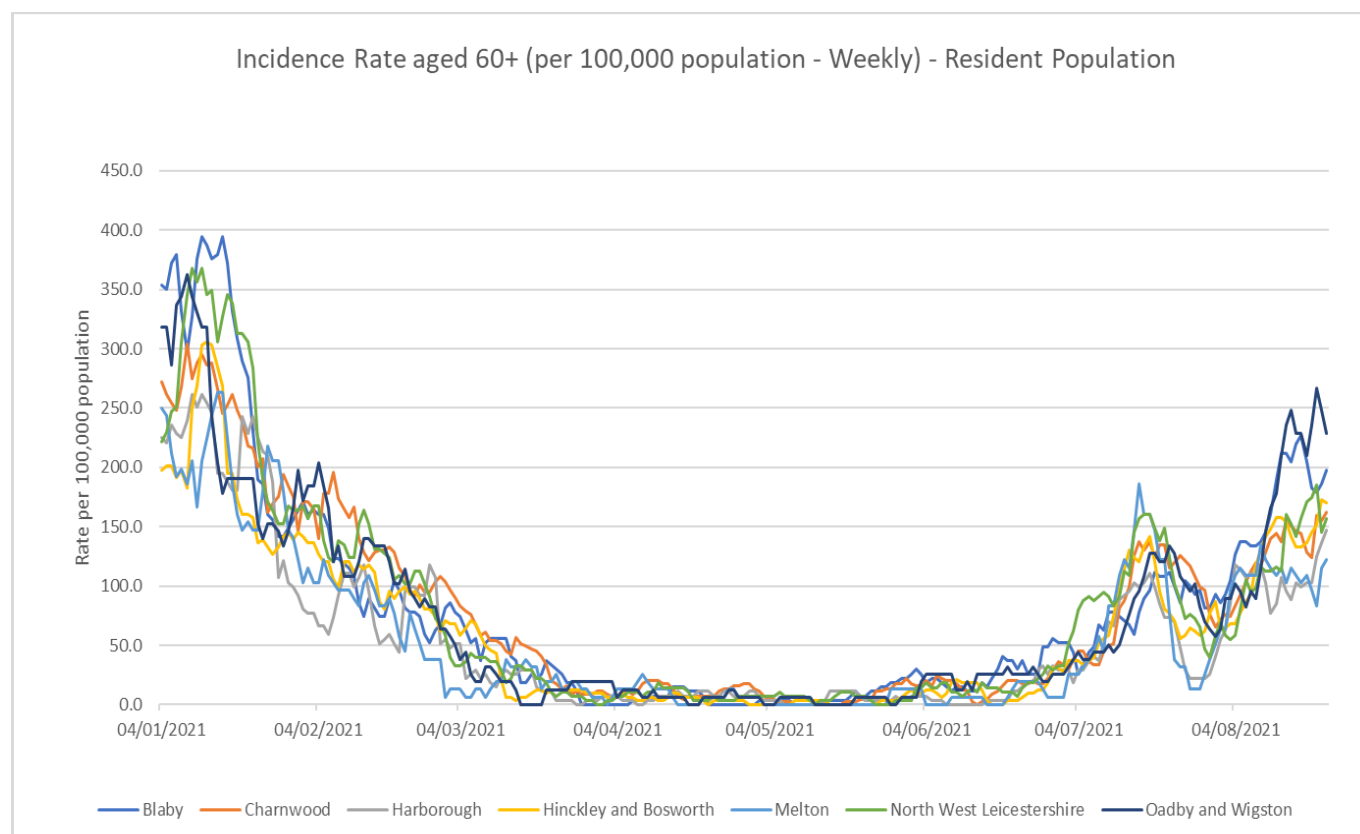
6. Hinckley and Bosworth has the highest weekly incidence rate of Covid-19 cases for people aged 17-21 in the county

- Between the 5th of January and the 5th of April the weekly incidence rate of Covid-19 for people aged 17-21 had been declining. From the 5th of April to the end of May the rate fluctuated. Since then the weekly incidence rate of Covid-19 for people aged 17-21 in Leicestershire has shown an increasing trend, with the exception of the period between the 14th of July and the 23rd of July where the incidence rate declined and the last three weeks where the rate fluctuated.
- As of the 23rd of August, the rate for Leicestershire (619.0 per 100,000 population) is higher than the national rate for people aged 17-21 (563.5 per 100,000 population).
- The latest weekly incidence rates of Covid-19 cases for people aged 17-21 (as of 23rd August) show that the following area rates in Leicestershire are higher than the national rate (563.5 per 100,000 population):
 - Hinckley & Bosworth; 924.5 per 100,000 (47 cases)
 - North West Leicestershire; 909.1 per 100,000 (45 cases)
 - Harborough; 844.1 per 100,000 (36 cases)
 - Melton; 749.6 per 100,000 (17 cases)
 - Blaby; 660.8 per 100,000 (30 cases)
- The following area rates in Leicestershire are lower than the national rate (563.5 per 100,000 population):
 - Oadby & Wigston; 440.5 per 100,000 (18 cases)
 - Charnwood; 406.7 per 100,000 (71 cases)
- Rutland has a higher incidence rate of Covid-19 cases (1060.1 per 100,000) than England for people aged 17-21. This equates to 18 cases.



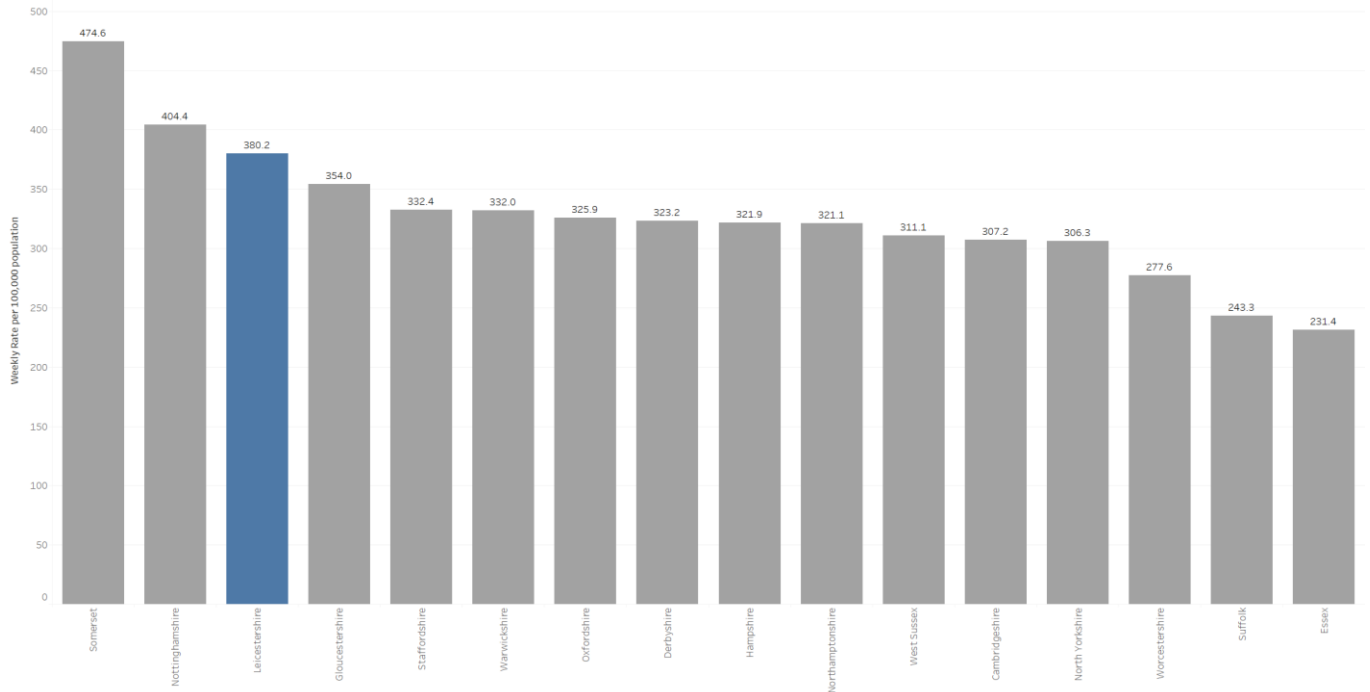
7. Oadby and Wigston has the highest weekly incidence rate of Covid-19 cases for people aged 60+ in the county

- The incidence rate for Covid-19 cases in people aged 60+ in Leicestershire showed a declining trend between the beginning of January and the middle of May, with the exception of the first two weeks of April where the rate showed an increasing trend. From the middle of May to the first week of June the rate showed an increasing trend, before fluctuating for two weeks. Since then the rate has shown an increasing trend, with the exception of the period between the 18th of July and the 30th of July where the incidence rate decreased. The rate for Leicestershire (167.8 per 100,000 population) is higher than the national rate (161.2 per 100,000 population) as of 22nd August.
- The latest weekly incidence rates of Covid-19 cases for people aged 60+ (as of 22nd August) show that the following area rates in Leicestershire are higher than the national rate (161.2 per 100,000 population):
 - Oadby & Wigston; 229.0 per 100,000 (36 cases)
 - Blaby; 197.2 per 100,000 (53 cases)
 - Hinckley & Bosworth; 170.1 per 100,000 (55 cases)
 - Charnwood; 162.2 per 100,000 (72 cases)
- The following area rates in Leicestershire are lower than the national rate (161.2 per 100,000 population):
 - North West Leicestershire; 156.5 per 100,000 (43 cases)
 - Harborough; 147.3 per 100,000 (40 cases)
 - Melton; 121.9 per 100,000 (19 cases)
- Rutland has a lower incidence rate of Covid-19 cases (92.1 per 100,000) than England for people aged 60+. This equates to 12 cases.



8. Leicestershire has seen an increase in the weekly rate of Covid-19 cases

- There has been an increase in the weekly rate of Covid-19 cases in Leicestershire from 352.3 (per 100,000 population) in week 32 of 2021 to 380.2 (per 100,000 population) in week 33 of 2021.
- As of week 33 (16th August to 22nd August 2021), Leicestershire is ranked 26th (highest) out of 149 upper tier local authorities and ranked 3rd (highest) out of its CIPFA similar areas.



9. The MSOA with the highest count of Covid-19 cases in the last week was Ibstock & Ellistown in North West Leicestershire

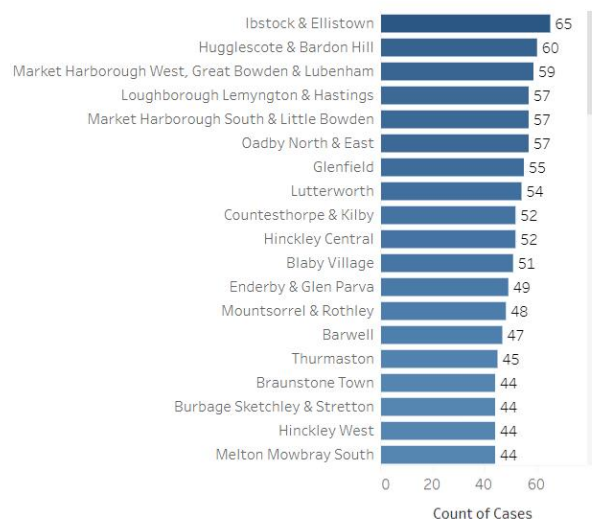
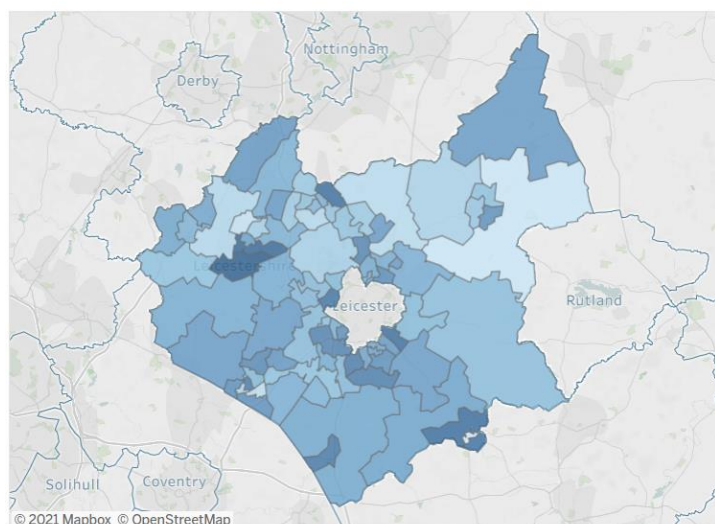
- Up to 25th August (week 33 of 2021), the Middle Super Output Area (MSOA) with the highest count of confirmed cases of Covid-19 was Ibstock & Ellistown with 65 reported cases. This was followed by:
 - Hugglescote & Bardon Hill (60)
 - Market Harborough West, Great Bowden & Lubenham (59)
 - Loughborough Lemyngton & Hastings (57), Market Harborough South & Little Bowden (57), Oadby North & East (57)
 - Glenfield (55)
 - Lutterworth (54)
 - Countesthorpe & Kilby (52), Hinckley Central (52)
 - Blaby Village (51)
 - Enderby & Glen Parva (49)
 - Mountsorrel & Rothley (48)
 - Barwell (47)
 - Thurmaston (45)
- All other areas recorded less than 45 cases in the last week.
- Areas that recorded between zero and two cases in the last week have been suppressed due to data disclosure and are represented as white in the map below.

Weekly Counts of Lab-confirmed Covid-19 cases by Middle Layer Super Output Area, Leicester, Leicestershire and Rutland

Date as number: 25/08/2021
 Local Authority: Leicestershire



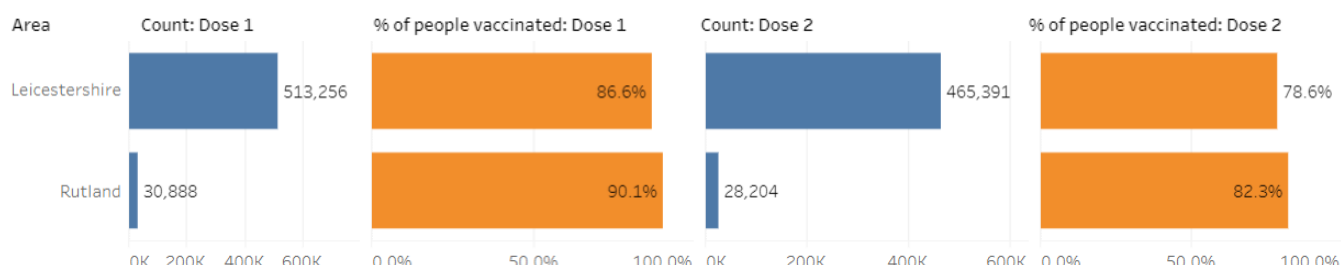
COVID-19 Cases:
 0 65



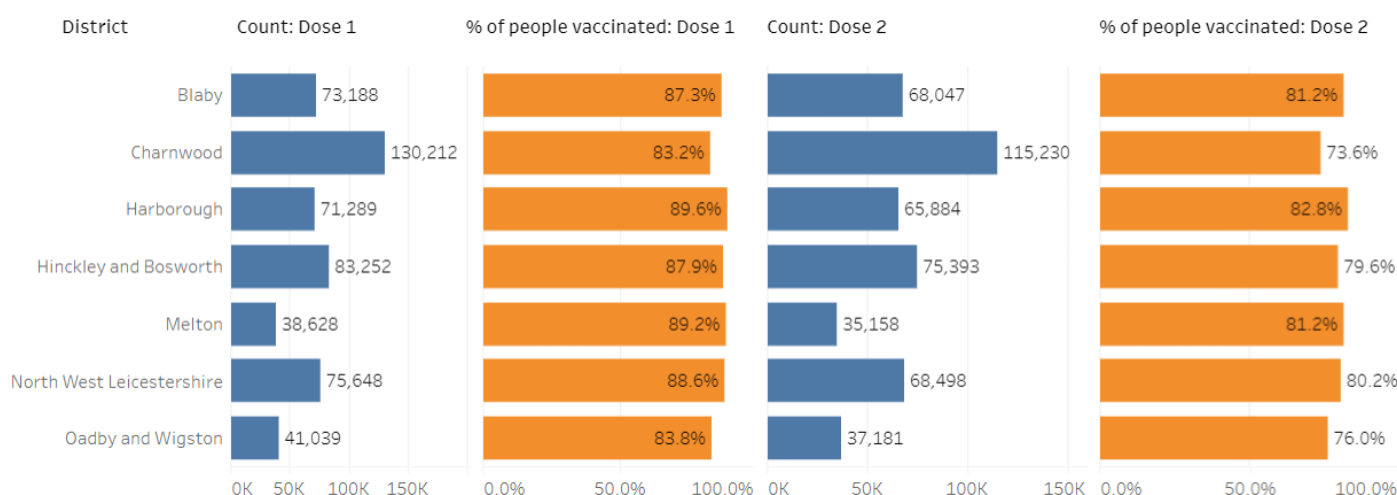
10. Covid-19 Vaccination Uptake Summary

The following tables show a summary of Covid-19 vaccination uptake by Local Authority and District with a breakdown for the over 18 age cohort.

- Up to 22nd August 2021, the Covid-19 dose 1 vaccination uptake for the over 18 age cohort was 86.6% in Leicestershire and 90.1% in Rutland. The Covid-19 dose 2 vaccination uptake for the over 18 age cohort in Leicestershire was 78.6%, whilst the dose 2 uptake in Rutland was 82.3%.

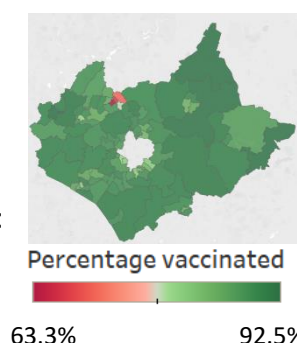


- Most districts (apart from Charnwood and Oadby and Wigston) have a Covid-19 dose 1 vaccination uptake for the over 18 age cohort of over 85%, with Harborough having the highest uptake with 89.6% and Charnwood having the lowest with 83.2%. With the exception of Charnwood, all districts have a Covid-19 dose 2 vaccination uptake for the over 18 age cohort of over 75%, with Harborough having the highest uptake with 82.8% and Charnwood having the lowest with 73.6%.



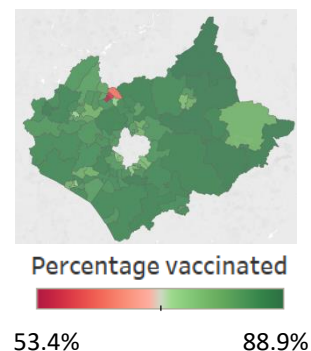
The following map shows a summary of Covid-19 vaccination uptake (dose 1) in Leicestershire and Rutland by Middle Super Output Area (MSOA) for the over 18 age cohort.

- Up to 22nd August 2021, Ashby de la Zouch South was the MSOA with the highest Covid-19 vaccination uptake for the over 18 age cohort with an uptake of 92.5%. This was followed by:
 - Bottesford, Harby & Croxton Kerrial; 92.3%
 - Ketton, Ryhall & Luffenham; 92.3%
 - Waltham, Wymondham & Great Dalby; 92.2%
 - Packington, Ravenstone & Coleorton; 91.7%
- Loughborough - University was the MSOA with the lowest Covid-19 vaccination uptake for the over 18 age cohort with an uptake of 63.3%. This was followed by:
 - Loughborough Storer & Queen's Park; 66.7%
 - Loughborough Lemyngton & Hastings; 70.4%
 - Loughborough – Shelthorpe & Woodthorpe; 78.3%
 - Thorpe Astley; 79.8%



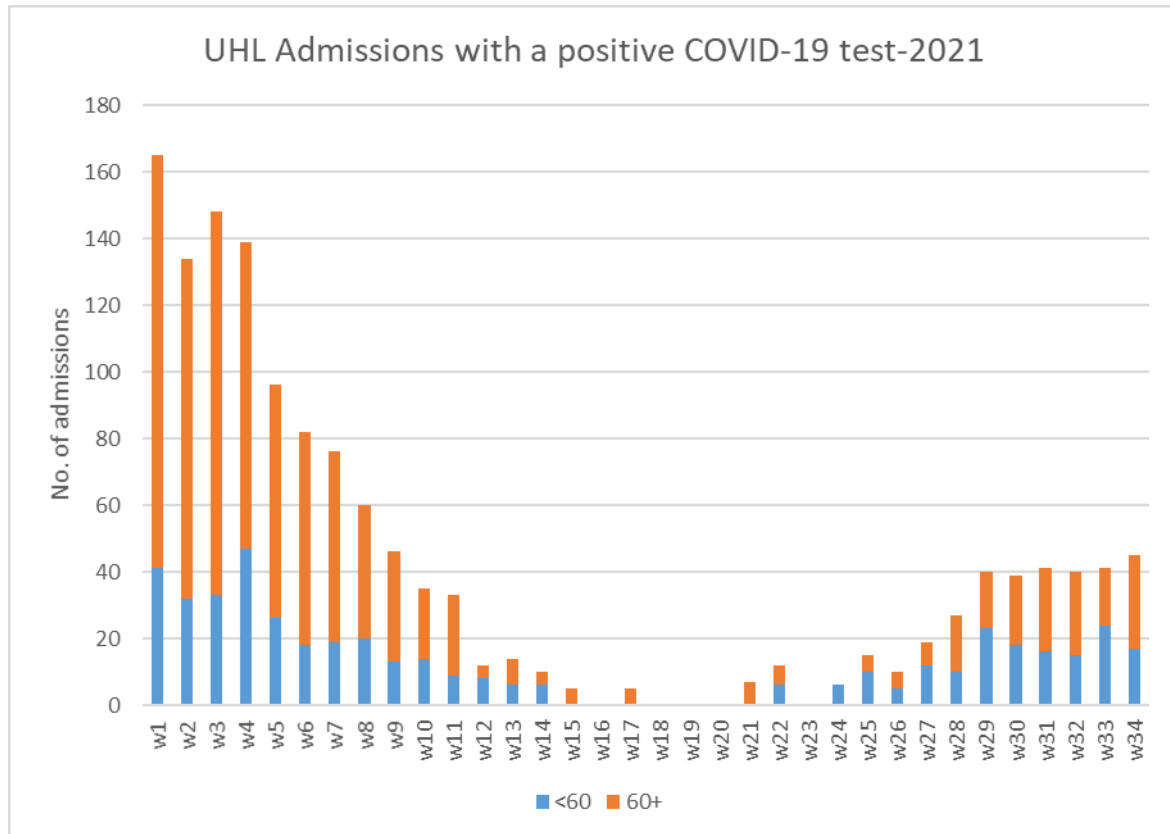
The following map shows a summary of Covid-19 vaccination uptake (dose 2) in Leicestershire and Rutland by Middle Super Output Area (MSOA) for the over 25 age cohort.

- Up to 22nd August 2021, Bottesford, Harby & Croxton Kerrial was the MSOA with the highest Covid-19 vaccination uptake for the over 25 age cohort with an uptake of 88.9%. This was followed by:
 - Waltham, Wymondham & Great Dalby; 88.6%
 - Ashby de la Zouch South; 88.5%
 - Uppingham, Lyddington & Braunston; 88.5%
 - Ketton, Ryhall & Luffenham; 88.2%
 - Countesthorpe & Kilby; 88.2%
- Loughborough – University was the MSOA with the lowest Covid-19 vaccination uptake for the over 25 age cohort with an uptake of 53.4%. This was followed by:
 - Loughborough Storer & Queen's Park; 56.7%
 - Loughborough Lemyngton & Hastings; 62.7%
 - Coalville; 73.9%
 - Loughborough – Shelthorpe & Woodthorpe; 74.3%



11. Admissions with Covid-19 to UHL

- Up to 28th August, 3,420 admissions with Covid-19 have been made to UHL by Leicestershire residents since the start of the pandemic.
- Patients aged 60+ account for just under three-quarters (73%) of all admissions from Leicestershire residents.
- In week 34 (22nd August 2021 to 28th August 2021), there were 45 admissions with Covid-19 made to UHL by Leicestershire residents; 28 (62%) of these admissions were patients aged 60+.



Note: Counts less than three have been suppressed.

12. District Level Summary

- **Oadby & Wigston** continues to have the highest rate of Covid-19 cases and deaths in the county. The rate of cumulative cases is significantly higher in comparison to the England average.
- From the beginning of September to the 9th November, the weekly counts of cases had shown an increasing trend in Oadby and Wigston. Between the w/c 9th November and the w/c 28th December, the weekly counts of cases fluctuated. The weekly counts of cases then showed a declining trend until the third week of May. Since then the weekly counts of cases have shown an increasing trend in Oadby and Wigston, apart from the last six weeks where the count of cases fluctuated.
- The weekly counts of cases have decreased from 241 in w/c 16th August to 216 in w/c 23rd August.
- The latest weeks data on death occurrences shows three deaths involving Covid-19 were recorded in Oadby & Wigston in week 33 of 2021; two deaths occurred in a hospital and one death occurred in a care home.
- **North West Leicestershire** has the fourth highest rate of Covid-19 cases and the second highest rate of deaths in the county. The rate of cumulative cases is significantly lower than the England average.
- From early September to the 9th November an increasing trend in the weekly counts of cases had been witnessed in North West Leicestershire. Following this, the weekly counts of cases decreased each week for four weeks. The weekly counts of cases then increased for three weeks, before showing a declining trend throughout January, February, March, April. Throughout May the count fluctuated, since then the count has increased week on week with the exception of the w/c 19th July, w/c 26th July, w/c 2nd August and w/c 23rd August where the count decreased.
- The latest weekly counts of cases have decreased from 416 in w/c 16th August to 368 in w/c 23rd August.
- The latest weekly count of deaths shows one death involving Covid-19 occurred in North West Leicestershire in week 33 of 2021; this death occurred in a care home.
- **Blaby** has the second highest rate of Covid-19 cases in the county and the third highest rate of deaths. The rate of cumulative cases is significantly higher compared to the England average.
- From mid-September, the weekly counts of cases in Blaby had shown an increasing trend, with a peak around the 9th of November. From then, the weekly counts of cases have fluctuated, with the exception of the last three weeks of December and the first week of January where the weekly counts of cases increased each week. From early January to late May the weekly counts of cases had shown a declining trend. Since the end of May the weekly counts of cases have increased week on week, with the exception of the last six weeks where the count of cases fluctuated.
- The latest weekly counts of cases have decreased from 437 in w/c 16th August to 394 in w/c 23rd August.
- The latest weeks data shows no deaths involving Covid-19 were recorded in Blaby in week 33 of 2021.
- **Melton** has the lowest rate of Covid-19 cases and the fourth highest rate of deaths in the county. The rate of cumulative cases is significantly lower than the England average.
- From mid-September, the weekly counts of cases had been increasing week on week in Melton, showing a peak around the 9th of November. A second peak was witnessed around 28th of December. Through January to the end of March weekly counts of cases had shown a declining trend, since then the weekly counts of cases in Melton had fluctuated until mid May. Since then

cases have shown an increasing trend with the exception of the w/c 19th July, w/c 26th July and w/c 23rd August where the weekly counts of cases decreased.

- The latest weekly count of cases have decreased from 164 in w/c 16th August to 141 in w/c 23rd August.
- The latest weekly count of deaths involving Covid-19 shows that no deaths occurred in Melton in week 33 of 2021.
- **Hinckley & Bosworth** has the third lowest rate of Covid-19 cases and third lowest rate of deaths in the county. The rate of cumulative cases is significantly lower compared to the England average.
- From mid-September to the 9th of November, the weekly counts of cases had increased each week in Hinckley and Bosworth. The weekly counts of cases had fluctuated from November 9th to January 11th. From then until mid March the weekly counts of cases decreased, before fluctuating until late May. Since the end of May there has been an increasing trend in the weekly counts of cases, apart from in the last six weeks where the count of cases fluctuated.
- The latest weekly counts of cases have decreased from 464 in w/c 16th August to 385 in w/c 23rd August.
- The latest weeks data shows one death involving Covid-19 was recorded in Hinckley & Bosworth in week 33 of 2021; this death occurred in a hospital.
- **Charnwood** has the third highest rate of Covid-19 cases and the second lowest rate of deaths in the county. The rate of cumulative cases is not significantly different to the England average.
- The weekly counts of cases in Charnwood had shown an increasing trend from early September to mid-October, showing a peak around the 19th of October. Between the 19th of October and the 23rd November the weekly counts of cases showed a declining trend. Following this, the weekly counts of cases increased each week in Charnwood, peaking around December 28th. The rate then showed a declining trend until the 3rd of May, before showing an increasing trend. Over the past six weeks, the count of cases has fluctuated.
- The latest weekly counts of cases have increased from 617 in w/c 16th August to 633 in w/c 23rd August.
- The latest weeks data shows one death involving Covid-19 was recorded in Charnwood in week 33 of 2021; this death occurred in a hospital.
- **Harborough** has the second lowest rate of Covid-19 cases and the lowest rate of deaths in the county. The rate of cumulative cases is significantly lower in comparison to the England average.
- From the beginning of September to the 9th November, the weekly counts of cases had shown an increasing trend in Harborough. Between the w/c 9th November and the w/c 7th December the weekly counts of cases showed a declining trend. Between then and December 28th, the weekly counts of cases had increased each week before showing a declining trend until the end of March. Throughout April and May the rate had fluctuated, before showing an increasing trend over the next seven weeks. Over the last six weeks the count of cases has fluctuated.
- The latest weekly counts of cases have decreased from 421 in w/c 16th August to 329 in w/c 23rd August.
- The latest weeks data on death occurrences shows that one death involving Covid-19 was recorded in Harborough in week 33 of 2021; this death occurred in a hospital.

If you require information contained in this leaflet in another version e.g. large print, Braille, tape or alternative language please telephone: 0116 305 6803, Fax: 0116 305 7271 or Minicom: 0116 305 6160.

જો આપ આ માહિતી આપની ભાષામાં સમજવામાં થોડી મદદ ઇચ્છતાં હો તો 0116 305 6803 નંબર પર ફોન કરશો અને અમે આપને મદદ કરવા યત્નરત્ના કરીશું.

ਜੇਕਰ ਤੁਹਾਨੂੰ ਇਸ ਜਾਣਕਾਰੀ ਨੂੰ ਸਮਝਣ ਵਿਚ ਕੁਝ ਮਦਦ ਚਾਹੀਦੀ ਹੈ ਤਾਂ ਕਿਰਪਾ ਕਰਕੇ 0116 305 6803 ਨੰਬਰ ਤੇ ਫੋਨ ਕਰੋ ਅਤੇ ਅਸੀਂ ਤੁਹਾਡੀ ਮਦਦ ਲਈ ਕਿਸੇ ਦਾ ਪ੍ਰਬੰਧ ਕਰ ਦਵਾਂਗੇ।

এই তথ্য নিজের ভাষায় বুঝার জন্য আপনার যদি কোন সাহায্যের প্রয়োজন হয়, তবে 0116 305 6803 এই নম্বরে ফোন করলে আমরা উপযুক্ত ব্যক্তির ব্যবস্থা করবো।

اگر آپ کو یہ معلومات سمجھنے میں کچھ مدد درکار ہے تو براہ مہربانی اس نمبر پر کال کریں
0116 305 6803 اور ہم آپ کی مدد کے لئے کسی کا انتظام کر دیں گے۔

假如閣下需要幫助，用你的語言去明白這些資訊，請致電 0116 305 6803，我們會安排有關人員為你提供幫助。

Jeżeli potrzebujesz pomocy w zrozumieniu tej informacji w Twoim języku, zadzwoń pod numer 0116 305 6803, a my Ci pomożemy.

Business Intelligence Service
Chief Executive's Department
Leicestershire County Council
County Hall
Glenfield
Leicester
LE3 8RA
ri@leics.gov.uk
www.lsr-online.org