

COVID-19: Data Update for Leicestershire

Period 1 September 2021 to 7 September 2021

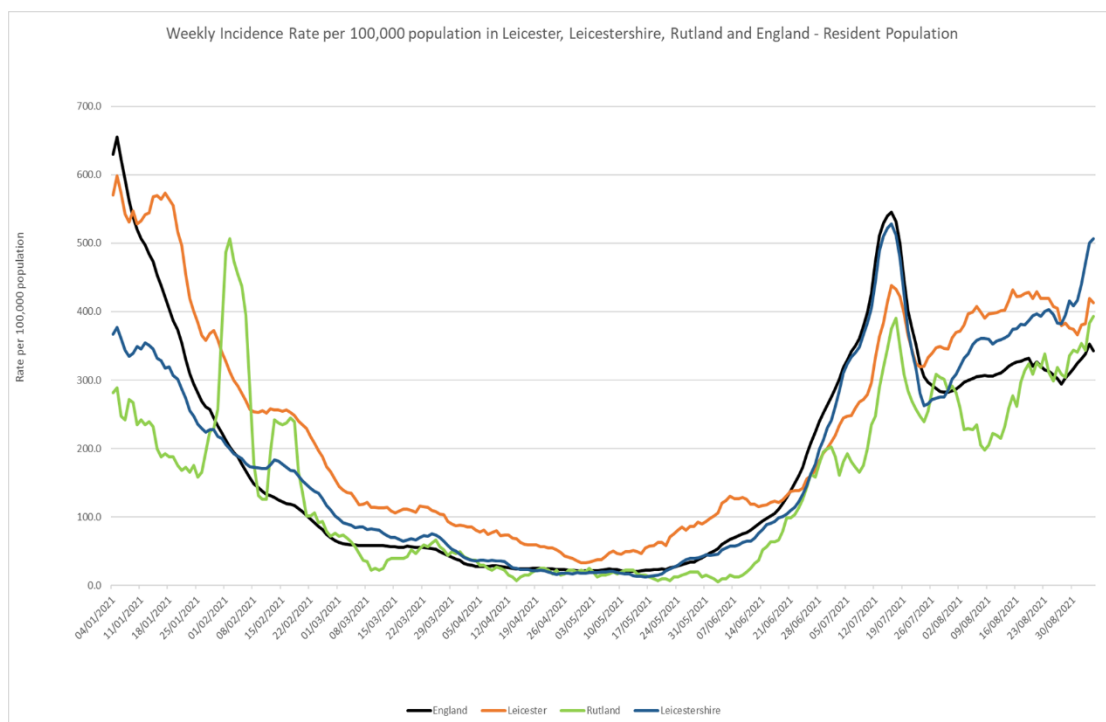
Headline Summary

1. Position Statement from the Director of Public Health for Leicestershire

Rates across Leicestershire have increased by 20% in the previous 7 days. Rates in Leicestershire are currently some of the highest in the country, fuelled by cases and associated testing in schools.

2. Trend in Weekly Incidence Rate (All ages) – Leicester, Leicestershire, Rutland and England

- The national rate has decreased from 352.7 (period 31st August to 6th September) to 342.7 per 100,000 population (period 1st September to 7th September). This latest rate reflects a percentage change increase of 13% compared to the previous 7 day period for England.
- The Leicestershire rate has increased from 500.4 (period 31st August to 6th September) to 506.8 per 100,000 population (period 1st September to 7th September). This latest rate reflects a percentage change increase of 28% compared to the previous 7 day period for Leicestershire. The rate in Leicestershire is higher than the national average.
- The rate for Leicester City stands at 413.0 per 100,000 population and is above the national average. The rate for Rutland stands at 392.8 per 100,000 population and is above the national average.

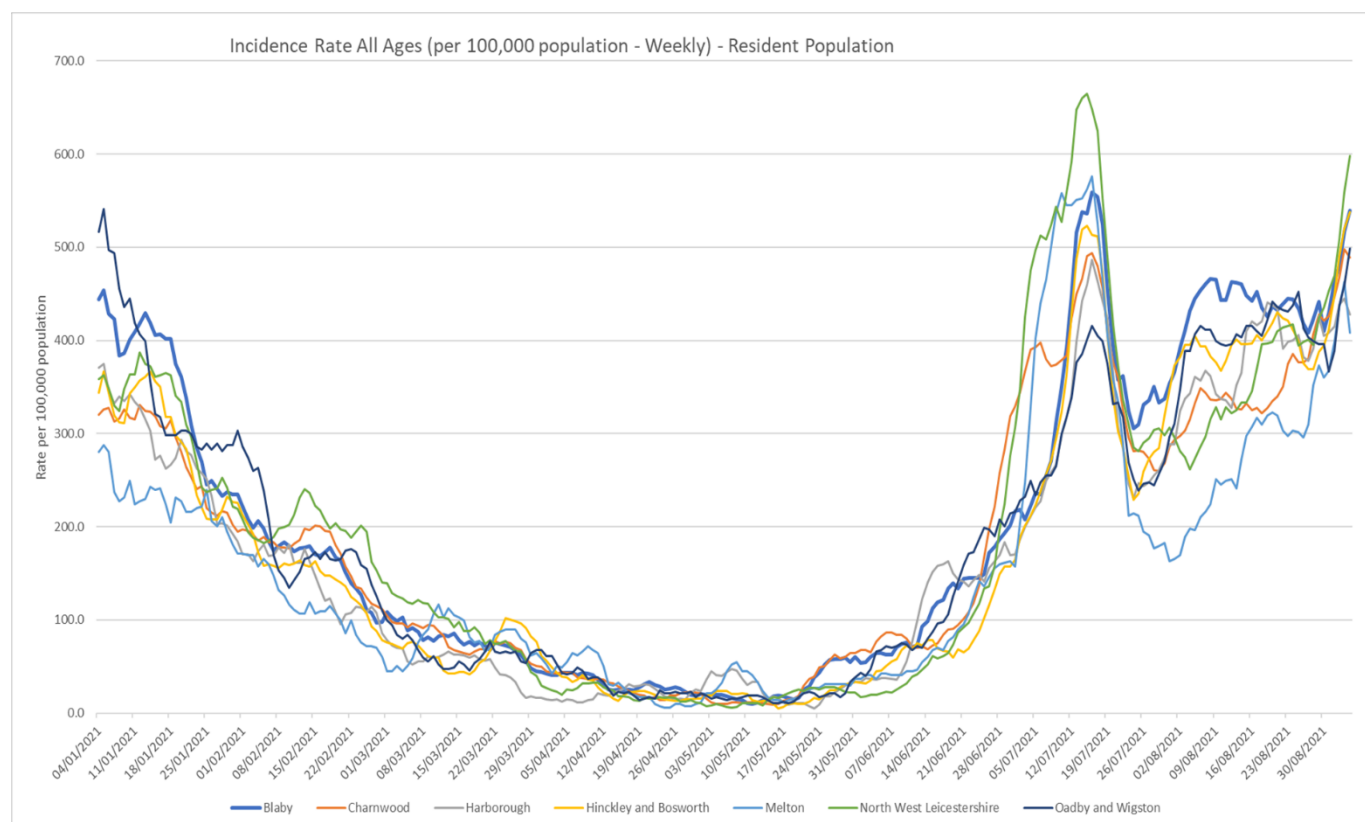


Source: PHE Power BI Line Lists

3. Trend in Weekly Incidence Rate (all ages) – Leicestershire Districts

- NWL has the highest rate in the county (598.2 per 100,000, 627 cases), followed by Blaby (539.5 per 100,000 population, 550 cases), H&B (537.5 per 100,000, 611 cases), O&W (499.0 per 100,000, 286 cases), Charnwood (488.8 per 100,000, 921 cases), Harborough (428.1 per 100,000, 409 cases) and Melton (408.6 per 100,000 population, 210 cases). Compared to the previous week, all districts have increased like nationally.

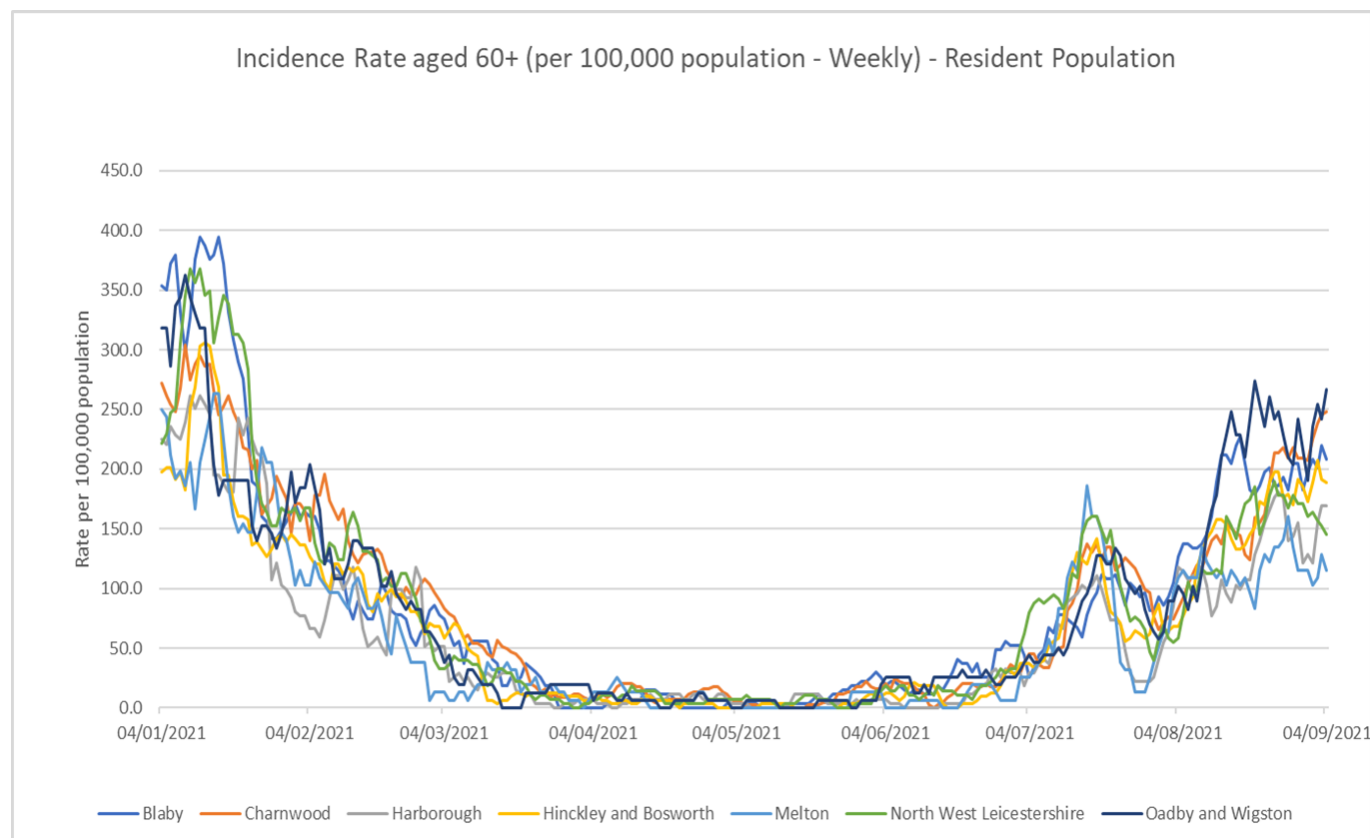
Indicator	Blaby	Charnwood	Harborough	Hinckley & Bosworth	Melton	NW Leicestershire	Oadby and Wigston	Leicestershire	Rutland	England
Weekly incidence rate per 100,000 population (All Ages)	539.5	488.8	428.1	537.5	408.6	598.2	499.0	506.8	392.8	342.7
Weekly count of cases (All Ages)	550	921	409	611	210	627	286	3614	159	193771
Percentage change in cases from previous 7 days (All Ages)	28%	20%	9%	45%	16%	51%	25%	28%	29%	13%
Weekly incidence rate per 100,000 population (60+)	208.4	247.7	169.4	188.6	115.5	145.6	267.2	196.8	153.6	169.4
Weekly count of cases (60+)	56	110	46	61	18	40	42	373	20	1526
Percentage individuals testing positive (weekly)	14.7%	14.0%	11.6%	13.5%	11.8%	14.9%	13.0%			8.1%



Source: PHE Power BI Line Lists

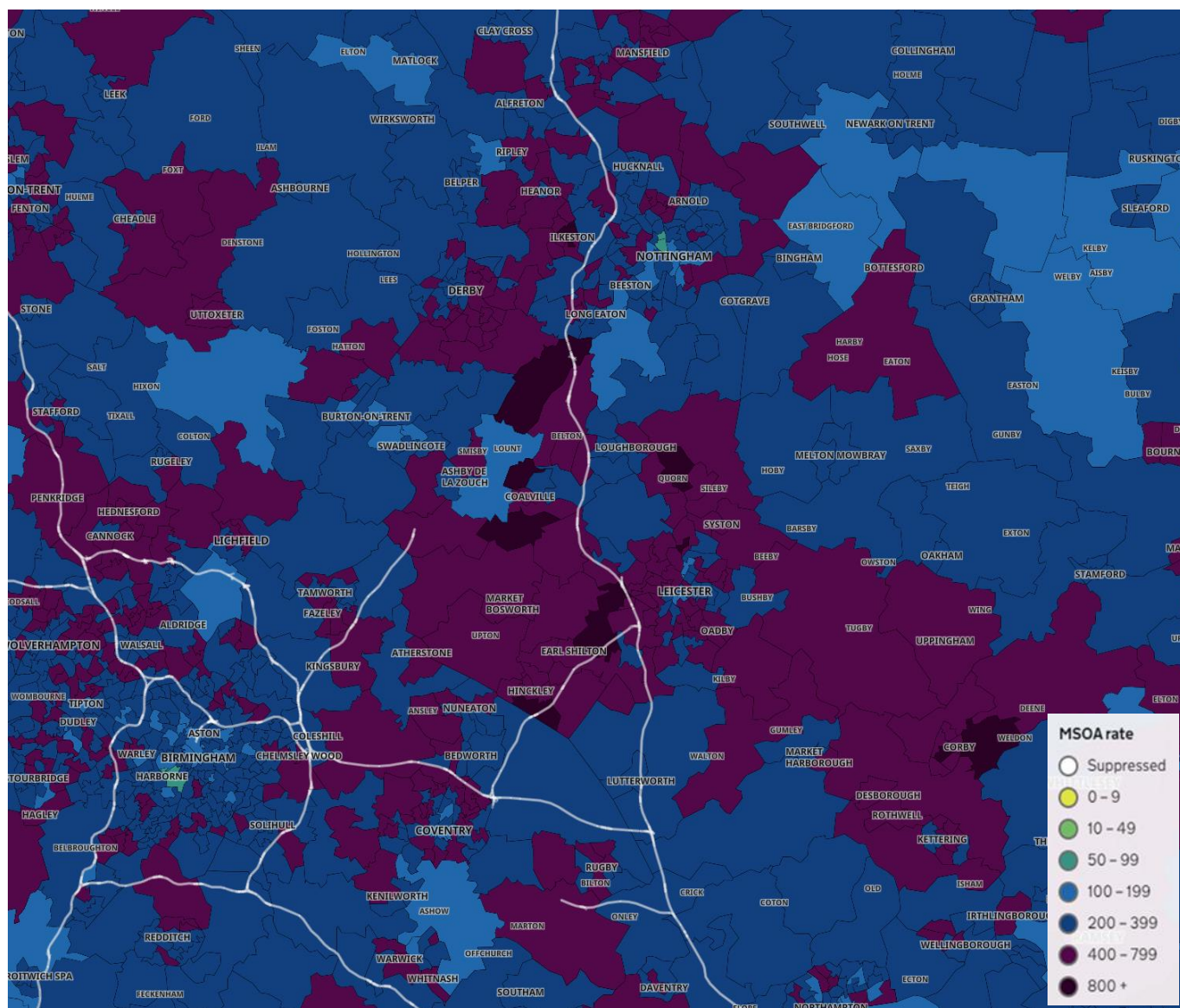
4. Trend in Weekly Incidence Rate (60+) – Leicestershire Districts

- The data for 60+ population show the rate for Leicestershire is 196.8 per 100,000 population, higher than the national rate of 169.4 per 100,000 population. O&W has the highest rate in the county (267.2 per 100,000 population, 42 cases) followed by Charnwood (247.7, 110 cases), Blaby (208.4, 56 cases), H&B (188.6, 61 cases), Harbrough (169.4, 46 cases), NWL (145.6, 40 cases) and Melton (115.5, 18 cases). Compared to the previous week, most districts (apart from NWL and Melton) have increased like nationally.



Source: PHE Power BI Line Lists

5. Weekly Cases by Middle Super Output Area (MSOA)



Source: PHE Coronavirus (COVID-19) in the UK Dashboard

If you require information contained in this leaflet in another version e.g. large print, Braille, tape or alternative language please telephone: 0116 305 6803, Fax: 0116 305 7271 or Minicom: 0116 305 6160.

જો આપ આ માહિતી આપની ભાષામાં સમજવામાં થોડી મદદ ઇચ્છતાં હો તો 0116 305 6803 નંબર પર ફોન કરશો અને અમે આપને મદદ કરવા અવસ્થા કરીશું.

ਜੇਕਰ ਤੁਹਾਨੂੰ ਇਸ ਜਾਣਕਾਰੀ ਨੂੰ ਸਮਝਣ ਵਿੱਚ ਕੁਝ ਮਦਦ ਚਾਹੀਦੀ ਹੈ ਤਾਂ ਕਿਰਪਾ ਕਰਕੇ 0116 305 6803 ਨੰਬਰ ਤੇ ਫੋਨ ਕਰੋ ਅਤੇ ਅਸੀਂ ਤੁਹਾਡੀ ਮਦਦ ਲਈ ਕਿਸੇ ਦਾ ਪ੍ਰਬੰਧ ਕਰ ਦਵਾਂਗੇ।

এই তথ্য নিজের ভাষায় বুঝার জন্য আপনার যদি কোন সাহায্যের প্রয়োজন হয়, তবে 0116 305 6803 এই নম্বরে ফোন করলে আমরা উপযুক্ত ব্যক্তির ব্যবস্থা করবো।

اگر آپ کو یہ معلومات سمجھنے میں کچھ مدد درکار ہے تو براہ مہربانی اس نمبر پر کال کریں 0116 305 6803 اور ہم آپ کی مدد کے لئے کسی کا انتظام کر دیں گے۔

假如閣下需要幫助，用你的語言去明白這些資訊，請致電 0116 305 6803，我們會安排有關人員為你提供幫助。

Jeżeli potrzebujesz pomocy w zrozumieniu tej informacji w Twoim języku, zadzwoń pod numer 0116 305 6803, a my Ci dopomożemy.

13 September 2021

Business Intelligence Service
Chief Executive's Department
Leicestershire County Council
County Hall, Glenfield
Leicester LE3 8RA

Tel 0116 305 6059
Email: Kajal.lad@leics.gov.uk

Produced by the Business Intelligence Service at Leicestershire County Council.

Whilst every effort has been made to ensure the accuracy of the information contained within this report, Leicestershire County Council cannot be held responsible for any errors or omission relating to the data contained within the report.