

COVID-19: Data Update for Leicestershire

Period 8 September 2021 to 14 September 2021

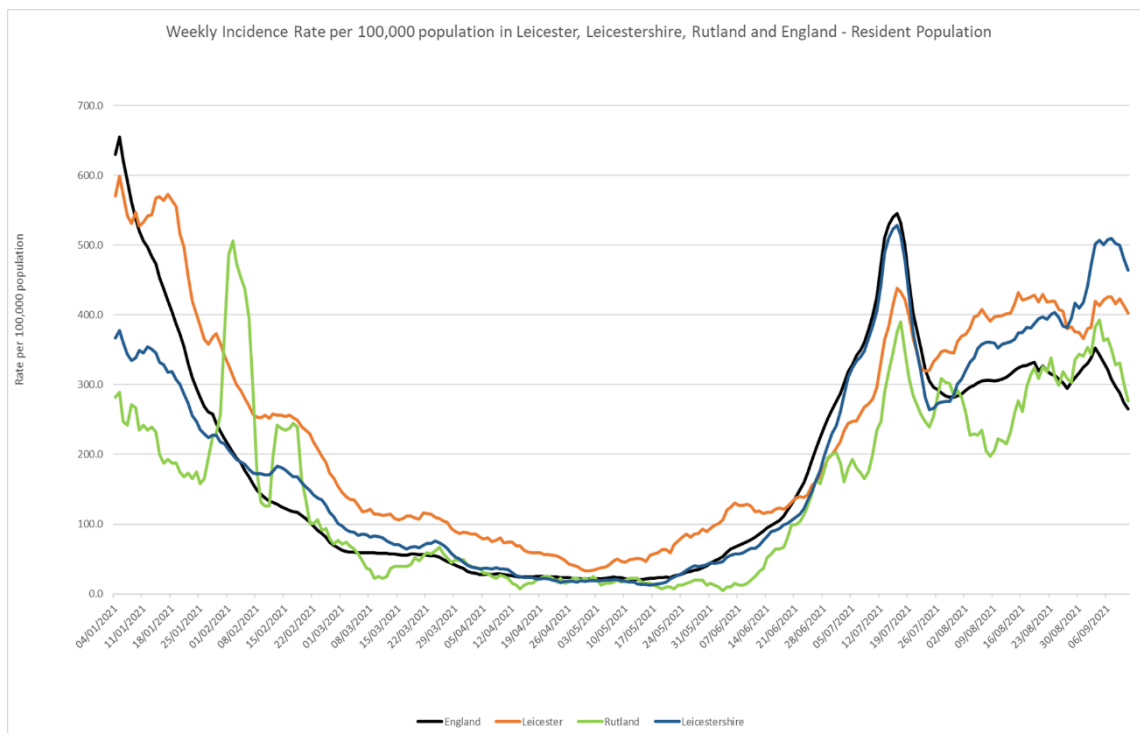
Headline Summary

1. Position Statement from the Director of Public Health for Leicestershire

Although there has been a welcome drop in the overall rates, rates in the 11-16 age group continue at a high level, typically two to three times that of the national average, which is maintaining the overall high levels in Leicestershire.

2. Trend in Weekly Incidence Rate (All ages) – Leicester, Leicestershire, Rutland and England

- The national rate has decreased from 274.4 (period 7th September to 13th September) to 265.0 per 100,000 population (period 8th September to 14th September). This latest rate reflects a percentage change decrease of 23% compared to the previous 7 day period for England.
- The Leicestershire rate has decreased from 480.6 (period 7th September to 13th September) to 464.5 per 100,000 population (period 8th September to 14th September). This latest rate reflects a percentage change decrease of 8% compared to the previous 7 day period for Leicestershire. The rate in Leicestershire is higher than the national average.
- The rate for Leicester City stands at 402.2 per 100,000 population and is above the national average. The rate for Rutland stands at 276.7 per 100,000 population and is above the national average.

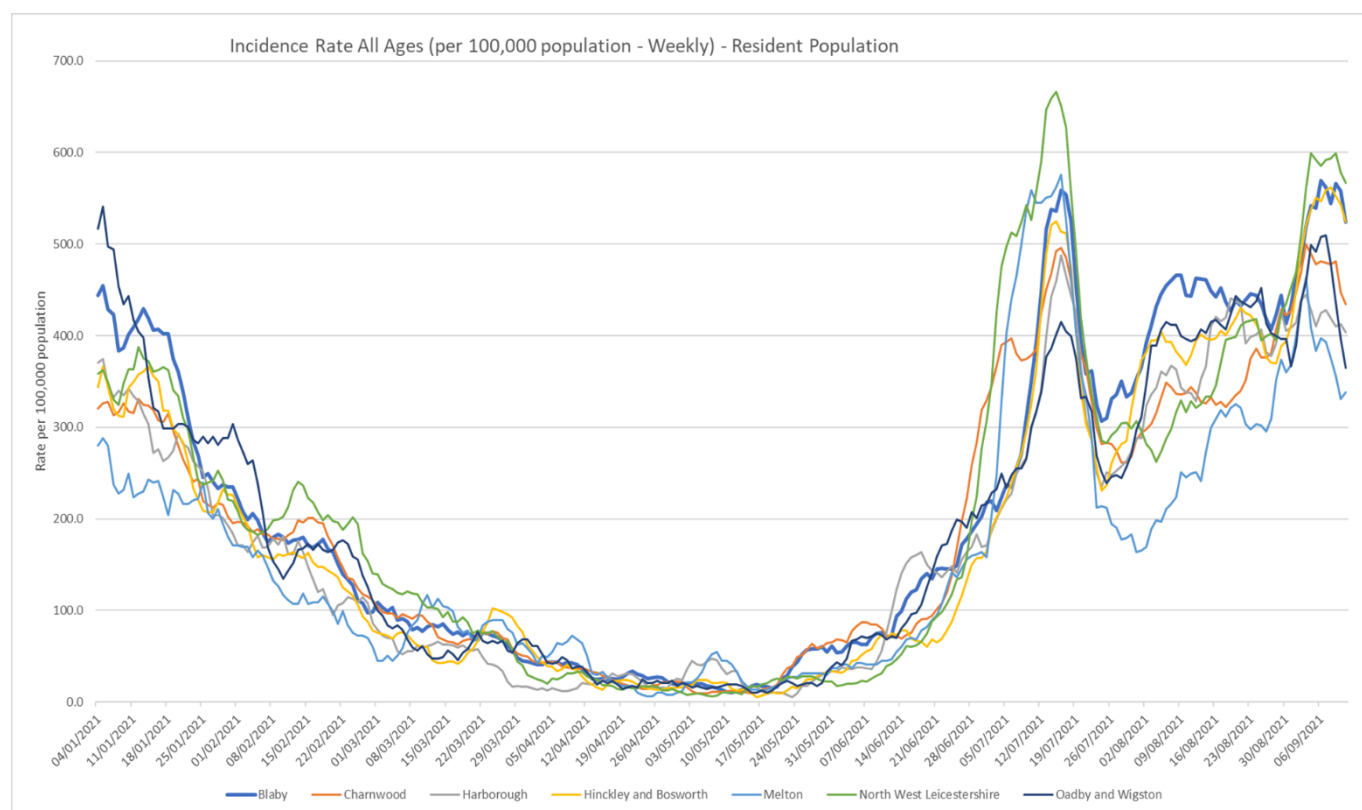


Source: PHE Power BI Line Lists

3. Trend in Weekly Incidence Rate (all ages) – Leicestershire Districts

- NWL has the highest rate in the county (566.7 per 100,000, 594 cases), followed by H&B (524.3 per 100,000 population, 596 cases), Blaby (523.8 per 100,000, 534 cases), Charnwood (434.7 per 100,000, 819 cases), Harborough (404.0 per 100,000, 386 cases), O&W (364.7 per 100,000, 209 cases) and Melton (338.6 per 100,000 population, 174 cases). Compared to the previous week, all districts have decreased like nationally.

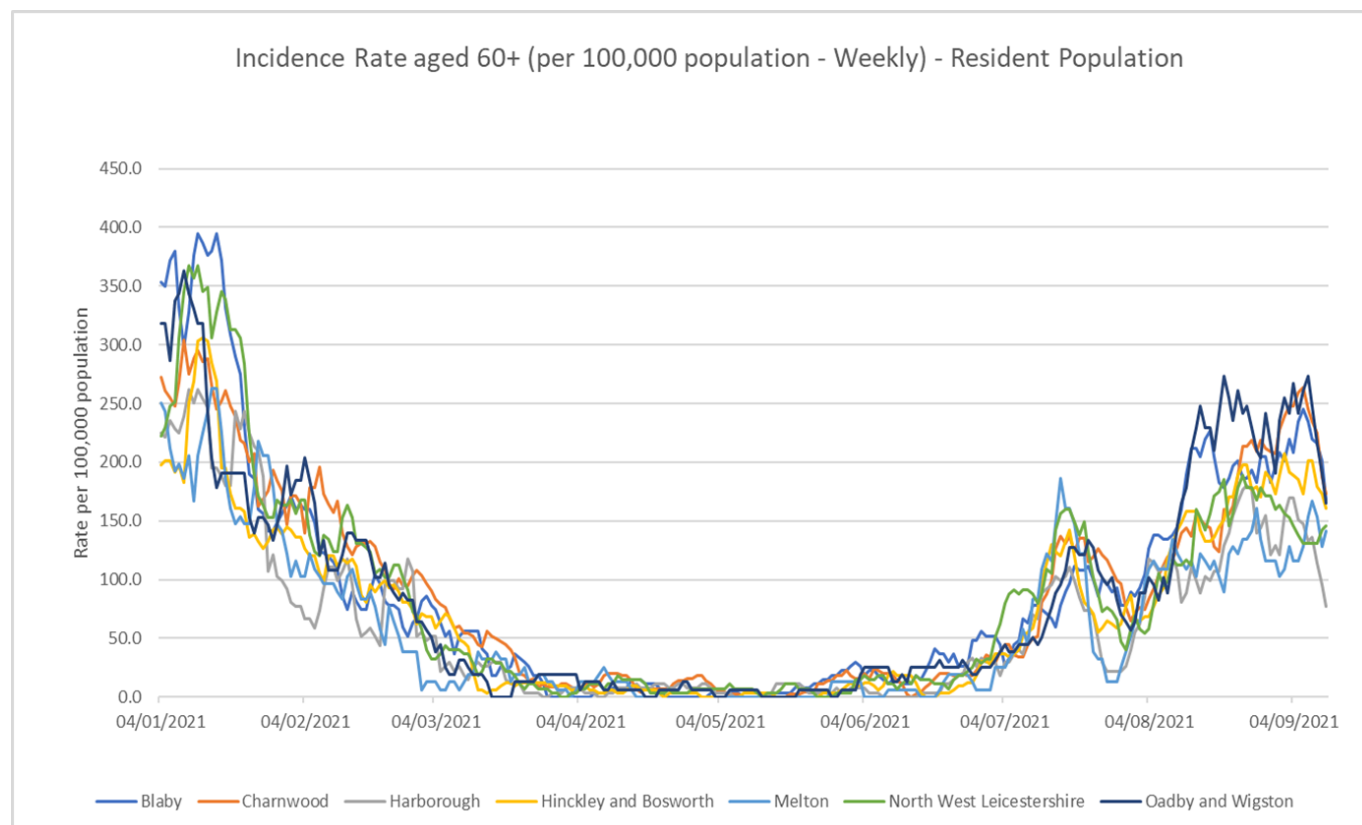
Indicator	Blaby	Charnwood	Harborough	Hinckley & Bosworth	Melton	NW Leicestershire	Oadby and Wigston	Leicestershire	Rutland	England
Weekly incidence rate per 100,000 population (All Ages)	523.8	434.7	404.0	524.3	338.6	566.7	364.7	464.5	276.7	265.0
Weekly count of cases (All Ages)	534	819	386	596	174	594	209	3312	112	149844
Percentage change in cases from previous 7 days (All Ages)	-3%	-11%	-6%	-2%	-17%	-5%	-27%	-8%	-30%	-23%
Weekly incidence rate per 100,000 population (60+)	167.5	173.4	77.4	160.8	141.1	145.6	165.4	149.3	69.1	134.4
Weekly count of cases (60+)	45	77	21	52	22	40	26	283	9	1526
Percentage individuals testing positive (weekly)	12.5%	11.2%	10.4%	12.2%	9.3%	12.4%	9.2%			6.4%



Source: PHE Power BI Line Lists

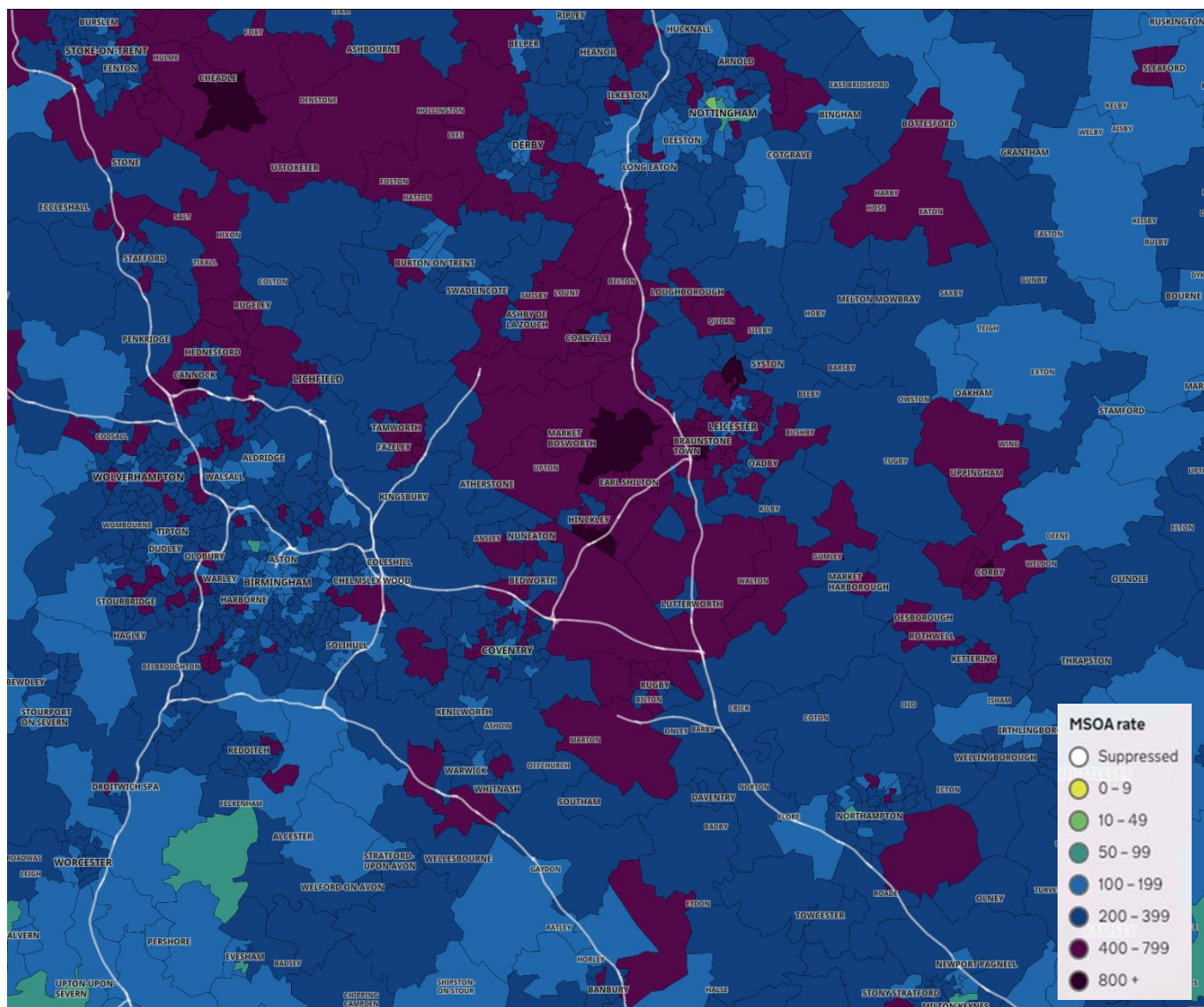
4. Trend in Weekly Incidence Rate (60+) – Leicestershire Districts

- The data for 60+ population show the rate for Leicestershire is 149.3 per 100,000 population, higher than the national rate of 134.4 per 100,000 population. Charnwood has the highest rate in the county (173.4 per 100,000 population, 77 cases) followed by Blaby (167.5, 45 cases), O&W (165.4, 26 cases), H&B (160.8, 52 cases), NWL (145.6, 40 cases), Melton (141.1, 22 cases) and Harborough (77.4, 21 cases). Compared to the previous week, most districts (apart from NWL and Melton) have decreased, like nationally.



Source: PHE Power BI Line Lists

5. Weekly Cases by Middle Super Output Area (MSOA)



Source: PHE Coronavirus (COVID-19) in the UK Dashboard

If you require information contained in this leaflet in another version e.g. large print, Braille, tape or alternative language please telephone: 0116 305 6803, Fax: 0116 305 7271 or Minicom: 0116 305 6160.

જો આપ આ માહિતી આપની ભાષામાં સમજવામાં થોડી મદદ ઇચ્છતાં હો તો 0116 305 6803 નંબર પર ફોન કરશો અને અમે આપને મદદ કરવા અવસ્થા કરીશું.

ਜੇਕਰ ਤੁਹਾਨੂੰ ਇਸ ਜਾਣਕਾਰੀ ਨੂੰ ਸਮਝਣ ਵਿਚ ਕੁਝ ਮਦਦ ਚਾਹੀਦੀ ਹੈ ਤਾਂ ਕਿਰਪਾ ਕਰਕੇ 0116 305 6803 ਨੰਬਰ ਤੇ ਫੋਨ ਕਰੋ ਅਤੇ ਅਸੀਂ ਤੁਹਾਡੀ ਮਦਦ ਲਈ ਕਿਸੇ ਦਾ ਪ੍ਰਬੰਧ ਕਰ ਦਵਾਂਗੇ।

এই তথ্য নিজের ভাষায় বুঝার জন্য আপনার যদি কোন সাহায্যের প্রয়োজন হয়, তবে 0116 305 6803 এই নম্বরে ফোন করলে আমরা উপযুক্ত ব্যক্তির ব্যবস্থা করবো।

اگر آپ کو یہ معلومات سمجھنے میں کچھ مدد درکار ہے تو براہ مہربانی اس نمبر پر کال کریں 0116 305 6803 اور ہم آپ کی مدد کے لئے کسی کا انتظام کر دیں گے۔

假如閣下需要幫助，用你的語言去明白這些資訊，請致電 0116 305 6803，我們會安排有關人員為你提供幫助。

Jeżeli potrzebujesz pomocy w zrozumieniu tej informacji w Twoim języku, zadzwoń pod numer 0116 305 6803, a my Ci pomożemy.

20 September 2021

Business Intelligence Service
Chief Executive's Department
Leicestershire County Council
County Hall, Glenfield
Leicester LE3 8RA

Tel: 0116 305 6059
Email: Kajal.lad@leics.gov.uk

Produced by the Business Intelligence Service at Leicestershire County Council.

Whilst every effort has been made to ensure the accuracy of the information contained within this report, Leicestershire County Council cannot be held responsible for any errors or omission relating to the data contained within the report.