

COVID-19: Data Update for Leicestershire

Period 29 December 2021 to 4 January 2022

Headline Summary

1. Position Statement from the Director of Public Health for Leicestershire

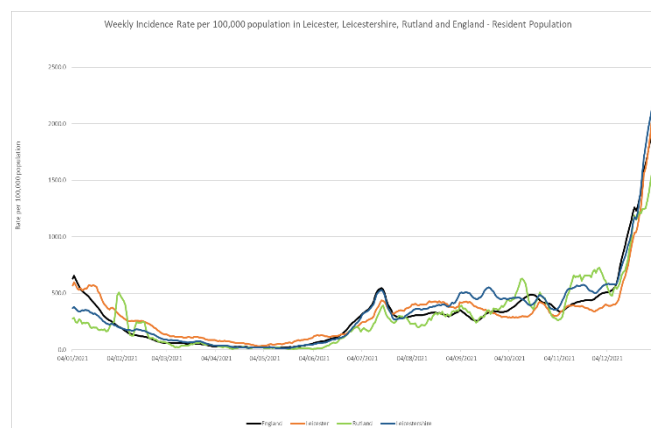
Rates are above 2,000/100,000 population across Leicestershire, approaching four times the pre-Omicron record level. There are some signs that rates may have peaked, if only temporarily, although it is unknown to what extent this is a 'genuine' fall or a by-product of the squeeze on the availability of testing.

We are also now experiencing the highest rates of Covid in the over 60s that we have seen at over 1,000/100,000 population.

Thankfully the lesser severity of Omicron has meant that there has not been an overwhelming number of deaths but the wave of sickness absence, and the requirements for self-isolation, is causing severe pressure for health, care and other public services.

2. Trend in Weekly Incidence Rate (All ages) – Leicester, Leicestershire, Rutland and England

- The national rate has increased from 1846.6 (period 28th December 2021 to 3rd January 2022) to 1924.4 per 100,000 population (period 29th December to 4th January). This latest rate reflects a percentage change increase of 38% compared to the previous 7 day period for England.
- The Leicestershire rate has increased from 2053.3 (period 28th December to 3rd January) to 2139.0 per 100,000 population (period 29th December to 4th January). This latest rate reflects a percentage change increase of 50% compared to the previous 7 day period for Leicestershire. The rate in Leicestershire is higher than the national average.
- The rate for Leicester City stands at 2053.5 per 100,000 population and is above the national average. The rate for Rutland stands at 1571.3 per 100,000 population and is below the national average.

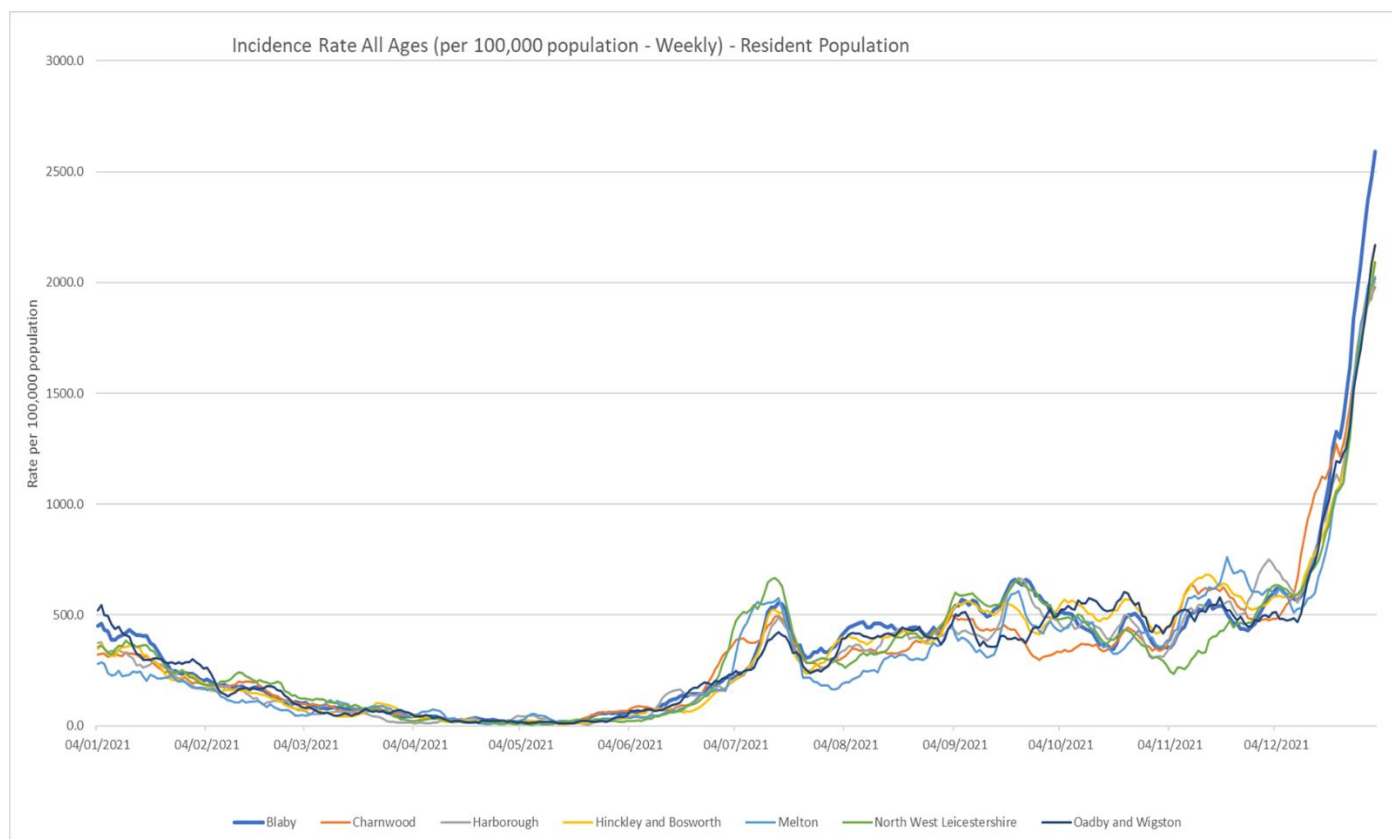


Source: PHE Power BI Line List

3. Trend in Weekly Incidence Rate (all ages) – Leicestershire Districts

- Blaby has the highest rate in the county (2590.5 per 100,000 population, 2641 cases), followed by H&B (2172.2 per 100,000, 2469 cases), O&W (2170.5 per 100,000, 1244 cases), NWL (2092.4 per 100,000 population, 2193 cases), Harborough (2025.4 per 100,000, 1935 cases), Melton (2019.7 per 100,000, 1038 cases) and Charnwood (1981.3 per 100,000, 3733 cases). Compared to the previous week, all districts have increased like nationally.

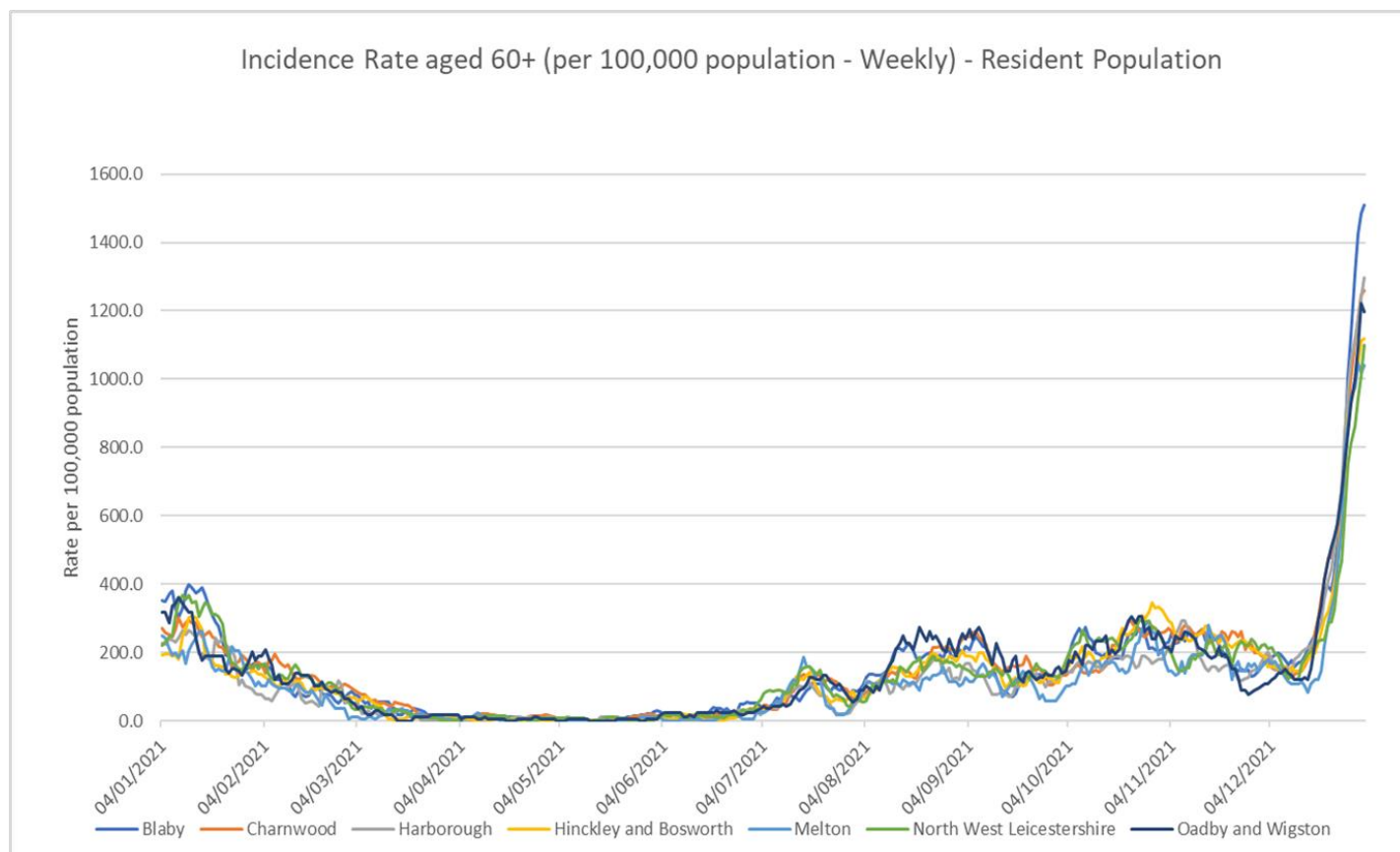
Indicator	Blaby	Charnwood	Harborough	Hinckley & Bosworth	Melton	NW Leicestershire	Oadby and Wigston	Leicestershire	Rutland	England
Weekly incidence rate per 100,000 population (All Ages)	2590.5	1980.2	2025.4	2172.2	2019.7	2092.4	2170.5	2138.7	1571.3	1924.4
Weekly count of cases (All Ages)	2641	3731	1935	2469	1038	2193	1244	15251	636	1088264
Percentage change in cases from previous 7 days (All Ages)	60%	37%	45%	56%	48%	61%	61%	50%	30%	38%
Weekly incidence rate per 100,000 population (60+)	1510.8	1258.9	1296.5	1119.3	1039.3	1098.9	1195.9	1229.7	890.6	1114.1
Weekly count of cases (60+)	406	559	352	362	162	302	188	2331	116	152192



Source: PHE Power BI Line Lists

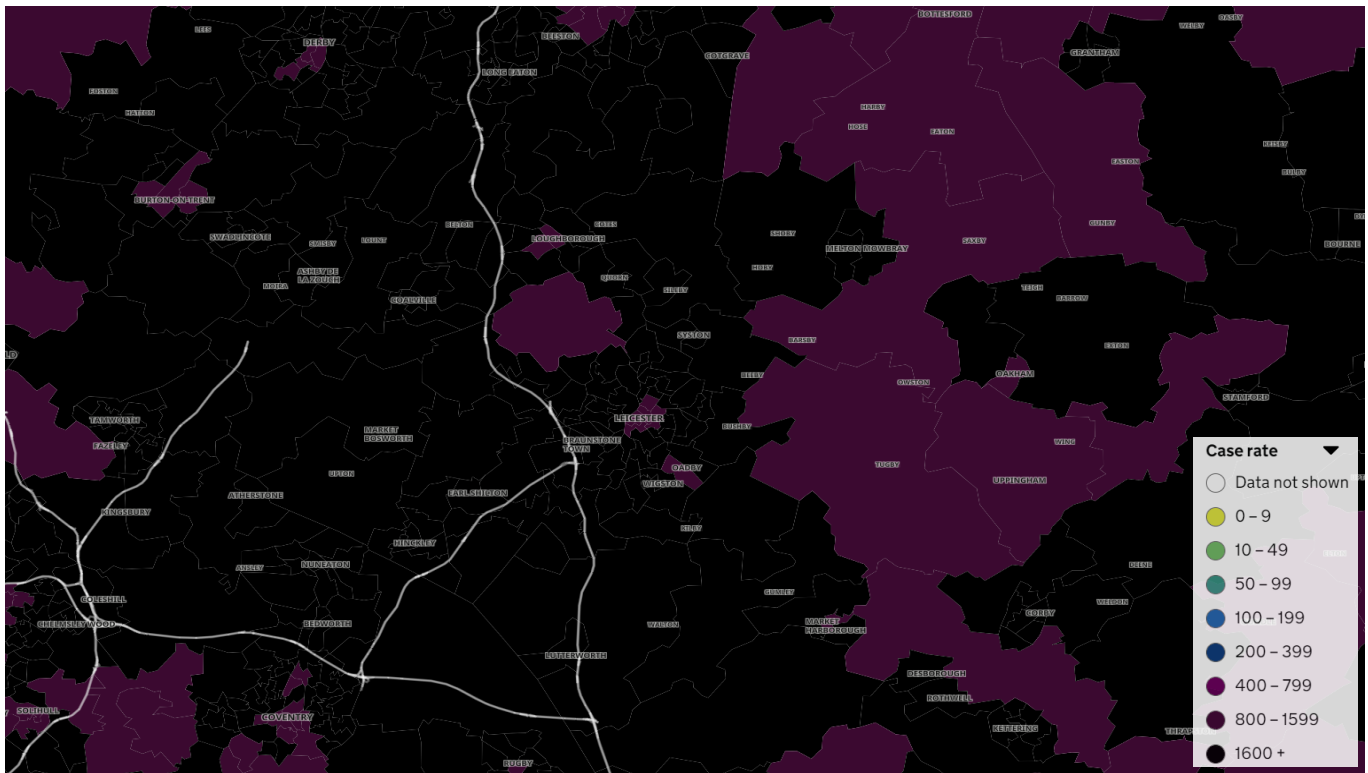
4. Trend in Weekly Incidence Rate (60+) – Leicestershire Districts

- The data for 60+ population show the rate for Leicestershire is 1230.2 per 100,000 population, higher than the national rate of 1114.1 per 100,000 population. Blaby has the highest rate in the county (1510.8 per 100,000 population, 406 cases), followed by Harborough (1296.5, 352 cases), Charnwood (1261.2, 560 cases), O&W (1195.9, 188 cases), H&B (1119.3, 362 cases), NWL (1098.9, 302 cases) and Melton (1039.3, 162 cases). Compared to the previous week, all districts increased like nationally.



Source: PHE Power BI Line Lists

5. Weekly Cases by Middle Super Output Area (MSOA)



Source: PHE Coronavirus (COVID-19) in the UK Dashboard

If you require information contained in this leaflet in another version e.g. large print, Braille, tape or alternative language please telephone: 0116 305 6803, Fax: 0116 305 7271 or Minicom: 0116 305 6160.

ਜੇ ਆਪ ਆ ਮਾਭਿਨੀ ਆਪਨੀ ਆਖਾਮਾਂ ਸਮਝਵਾਮਾਂ ਥੀਓ ਮਦਦ
ਓਝੜਨਾਂ ਡੇ ਤੇ 0116 305 6803 ਨੰਬਰ ਪਰ ਫ਼ੋਨ ਕਰਓ ਅਨੇ
ਅਮੇ ਆਪਨੇ ਮਦਦ ਕਰਵਾ ਅਵਸਥਾ ਕਰੀਓ.

ਜੇਕਰ ਤੁਹਾਨੂੰ ਇਸ ਜਾਣਕਾਰੀ ਨੂੰ ਸਮਝਣ ਵਿਚ ਕੁਝ ਮਦਦ ਚਾਹੀਦੀ
ਹੈ ਤਾਂ ਕਿਰਪਾ ਕਰਕੇ 0116 305 6803 ਨੰਬਰ ਤੇ ਫ਼ੋਨ ਕਰੋ ਅਤੇ
ਅਸੀਂ ਤੁਹਾਡੀ ਮਦਦ ਲਈ ਕਿਸੇ ਦਾ ਪ੍ਰਬੰਧ ਕਰ ਦਵਾਂਗੇ।

এই তথ্য নিজের ভাষায় বুঝার জন্য আপনার যদি কোন
সাহায্যের প্রয়োজন হয়, তবে 0116 305 6803 এই নম্বরে
ফোন করলে আমরা উপযুক্ত ব্যক্তির ব্যবস্থা করবো।

اگر آپ کو یہ معلومات سمجھنے میں کچھ مدد درکار ہے تو براہ مہربانی اس نمبر پر کال کریں
0116 305 6803 اور ہم آپ کی مدد کے لئے کسی کا انتظام کر دیں گے۔

假如閣下需要幫助，用你的語言去明白這些資訊，
請致電 0116 305 6803，我們會安排有關人員為你
提供幫助。

Jeżeli potrzebujesz pomocy w zrozumieniu tej informacji
w Twoim języku, zadzwoń pod numer 0116 305 6803,
a my Ci pomożemy.

10 January 2022

Business Intelligence Service
Chief Executive's Department
Leicestershire County Council
County Hall, Glenfield
Leicester LE3 8RA

Tel: 0116 305 6059
Email: Kajal.lad@leics.gov.uk

Produced by the Business Intelligence Service at Leicestershire County Council.

Whilst every effort has been made to ensure the accuracy of the information contained within this report, Leicestershire County Council cannot be held responsible for any errors or omission relating to the data contained within the report.