

COVID-19: Data Update for Leicestershire

Period 5 January 2022 to 11 January 2022

Headline Summary

1. Position Statement from the Director of Public Health for Leicestershire

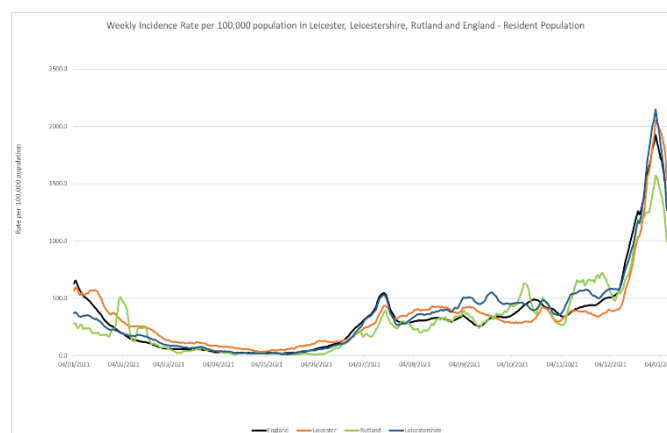
The case rate in Leicestershire has decreased by 41% over the last week, from 2146/100,000 a week ago to 1273/100,000 today although this drop may be exaggerated by a fall in those getting tested and registering the results following the change in testing policy.

Cases in the school age population are making up an increasing percentage of the total.

Cases among school children now make up one third of the total compared to a quarter a week ago.

2. Trend in Weekly Incidence Rate (All ages) – Leicester, Leicestershire, Rutland and England

- The national rate has decreased from 1479.1 (period 4th January 2022 to 10th January 2022) to 1272.4 per 100,000 population (period 5th January to 11th January). This latest rate reflects a percentage change decrease of 35% compared to the previous 7 day period for England.
- The Leicestershire rate has decreased from 1498.8 (period 4th January to 10th January) to 1272.8 per 100,000 population (period 5th January to 11th January). This latest rate reflects a percentage change decrease of 41% compared to the previous 7 day period for Leicestershire. The rate in Leicestershire is higher than the national average.
- The rate for Leicester City stands at 1532.9 per 100,000 population and is above the national average. The rate for Rutland stands at 995.7 per 100,000 population and is below the national average.

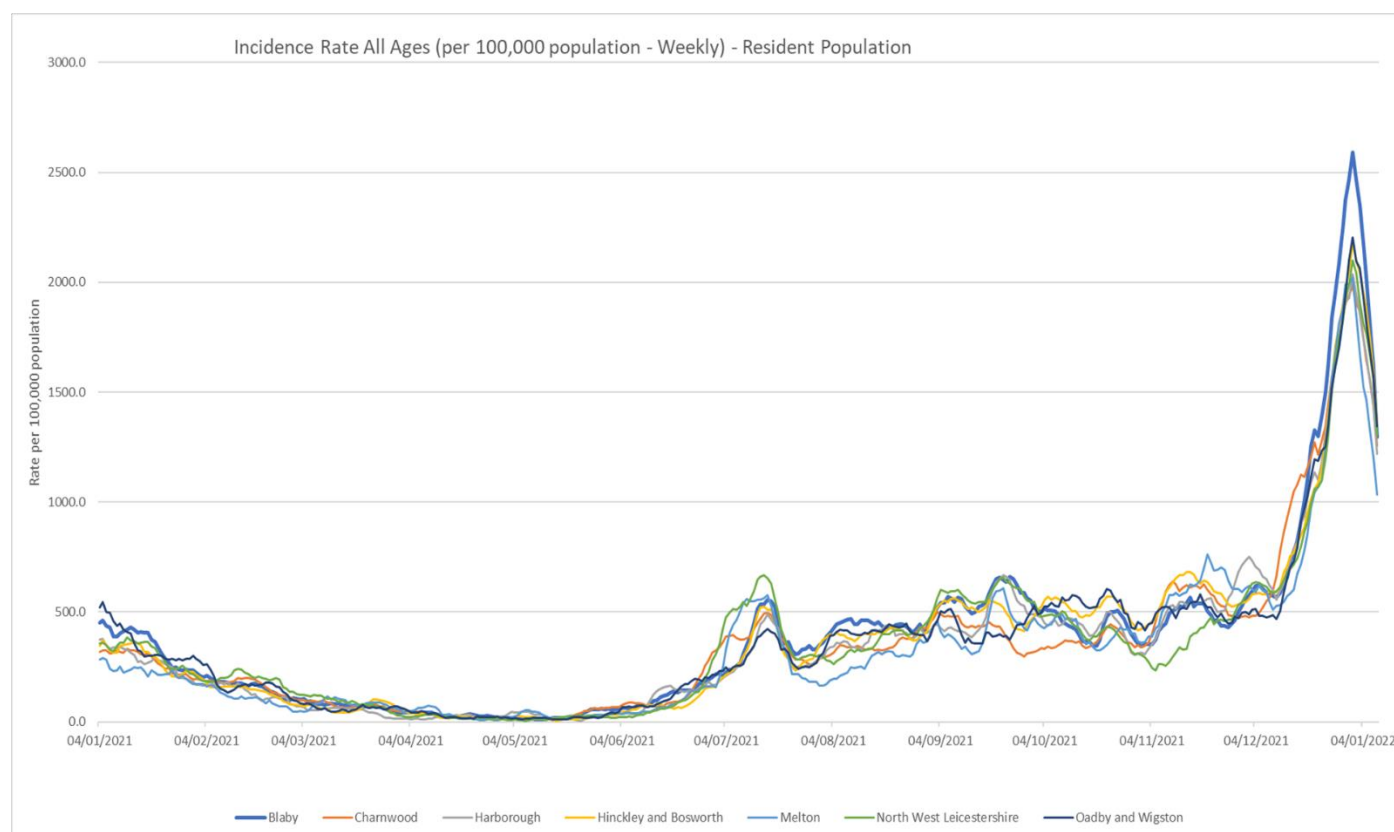


Source: PHE Power BI Line List

3. Trend in Weekly Incidence Rate (all ages) – Leicestershire Districts

- H&B has the highest rate in the county (1359.2 per 100,000 population, 1545 cases), followed by O&W (1345.2 per 100,000, 771 cases), NWL (1305.2 per 100,000 population, 1368 cases), Blaby (1296.7 per 100,000, 1322 cases), Charnwood (1258.9 per 100,000, 2372 cases), Charnwood (1258.9 per 100,000, 2372 cases), Harborough (1220.5 per 100,000, 1166 cases) and Melton (1035.1 per 100,000, 532 cases). Compared to the previous week, all districts have decreased like nationally.

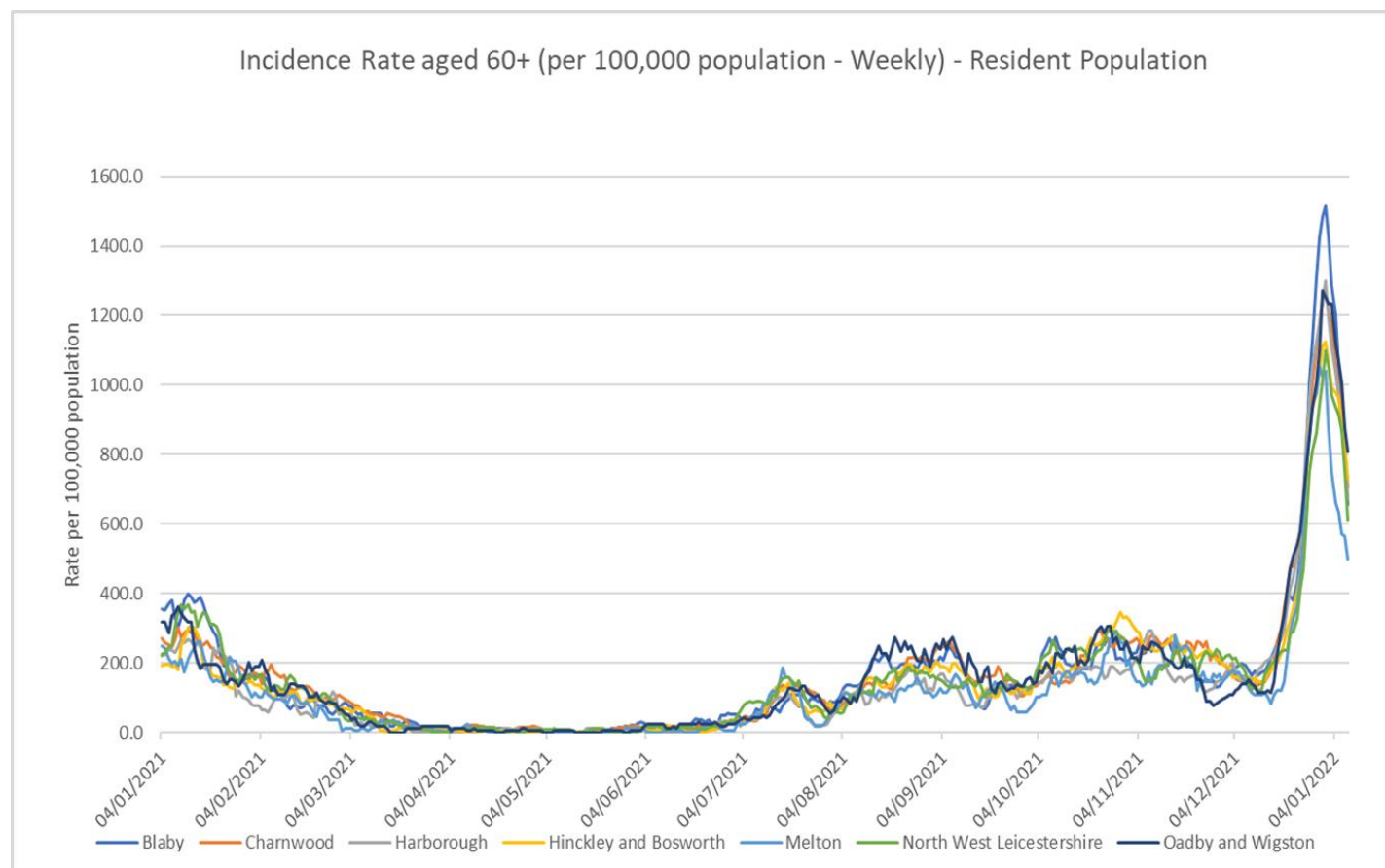
Indicator	Blaby	Charnwood	Harborough	Hinckley & Bosworth	Melton	NW Leicestershire	Oadby and Wigston	Leicestershire	Rutland	England
Weekly incidence rate per 100,000 population (All Ages)	1296.7	1258.9	1220.5	1359.2	1035.1	1305.2	1345.2	1272.8	995.7	1272.4
Weekly count of cases (All Ages)	1322	2372	1166	1545	532	1368	771	9076	403	719561
Percentage change in cases from previous 7 days (All Ages)	-50%	-37%	-40%	-38%	-49%	-38%	-39%	-41%	-37%	-34%
Weekly incidence rate per 100,000 population (60+)	654.9	704.9	670.4	729.7	500.4	611.3	807.9	675.3	445.3	660.8
Weekly count of cases (60+)	176	313	182	236	78	168	127	1280	58	90273



Source: PHE Power BI Line Lists

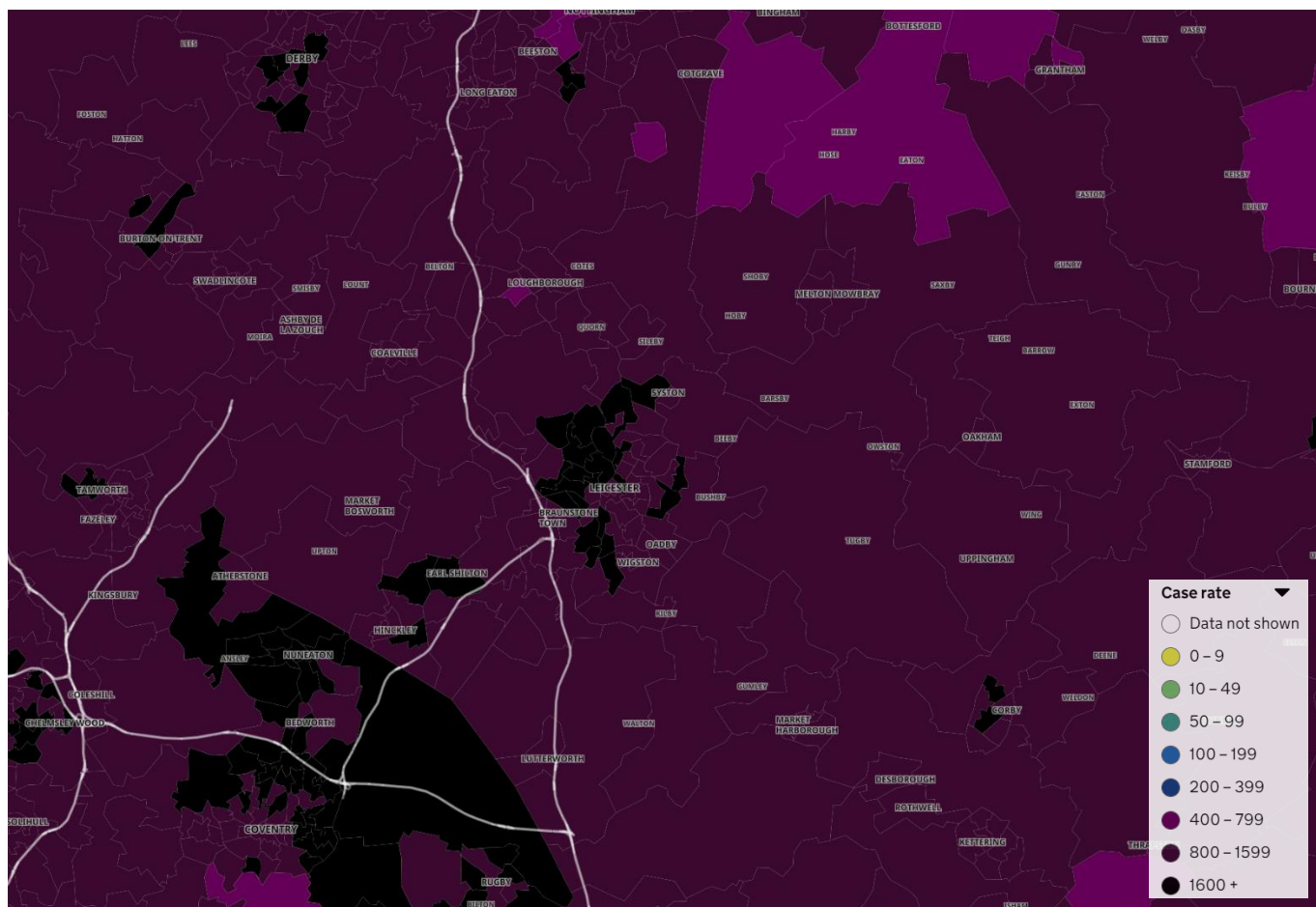
4. Trend in Weekly Incidence Rate (60+) – Leicestershire Districts

- The data for 60+ population show the rate for Leicestershire is 675.3 per 100,000 population, higher than the national rate of 660.8 per 100,000 population. O&W has the highest rate in the county (807.9 per 100,000 population, 127 cases), followed by H&B (729.7, 236 cases), Charnwood (704.9, 313 cases), Harborough (670.4, 182 cases), Blaby (654.9, 176 cases), NWL (611.3, 168 cases) and Melton (500.4, 78 cases). Compared to the previous week, all districts have decreased like nationally.



Source: PHE Power BI Line Lists

5. Weekly Cases by Middle Super Output Area (MSOA)



Source: PHE Coronavirus (COVID-19) in the UK Dashboard

If you require information contained in this leaflet in another version e.g. large print, Braille, tape or alternative language please telephone: 0116 305 6803, Fax: 0116 305 7271 or Minicom: 0116 305 6160.

જો આપ આ માહિતી આપની ભાષામાં સમજવામાં થોડી મદદ ઇચ્છતાં હો તો 0116 305 6803 નંબર પર ફોન કરશો અને અમે આપને મદદ કરવા અવસ્થા કરીશું.

ਜੇਕਰ ਤੁਹਾਨੂੰ ਇਸ ਜਾਣਕਾਰੀ ਨੂੰ ਸਮਝਣ ਵਿਚ ਕੁਝ ਮਦਦ ਚਾਹੀਦੀ ਹੈ ਤਾਂ ਕਿਰਪਾ ਕਰਕੇ 0116 305 6803 ਨੰਬਰ ਤੇ ਫੋਨ ਕਰੋ ਅਤੇ ਅਸੀਂ ਤੁਹਾਡੀ ਮਦਦ ਲਈ ਕਿਸੇ ਦਾ ਪ੍ਰਬੰਧ ਕਰ ਦਵਾਂਗੇ।

এই তথ্য নিজের ভাষায় বুঝার জন্য আপনার যদি কোন সাহায্যের প্রয়োজন হয়, তবে 0116 305 6803 এই নম্বরে ফোন করলে আমরা উপযুক্ত ব্যক্তির ব্যবস্থা করবো।

اگر آپ کو یہ معلومات سمجھنے میں کچھ مدد درکار ہے تو براہ مہربانی اس نمبر پر کال کریں 0116 305 6803 اور ہم آپ کی مدد کے لئے کسی کا انتظام کر دیں گے۔

假如閣下需要幫助，用你的語言去明白這些資訊，請致電 0116 305 6803，我們會安排有關人員為你提供幫助。

Jeżeli potrzebujesz pomocy w zrozumieniu tej informacji w Twoim języku, zadzwoń pod numer 0116 305 6803, a my Ci pomożemy.

17 January 2022

Business Intelligence Service
Chief Executive's Department
Leicestershire County Council
County Hall, Glenfield
Leicester LE3 8RA

Tel 0116 305 6059
Email: Kajal.lad@leics.gov.uk

Produced by the Business Intelligence Service at Leicestershire County Council.

Whilst every effort has been made to ensure the accuracy of the information contained within this report, Leicestershire County Council cannot be held responsible for any errors or omission relating to the data contained within the report.